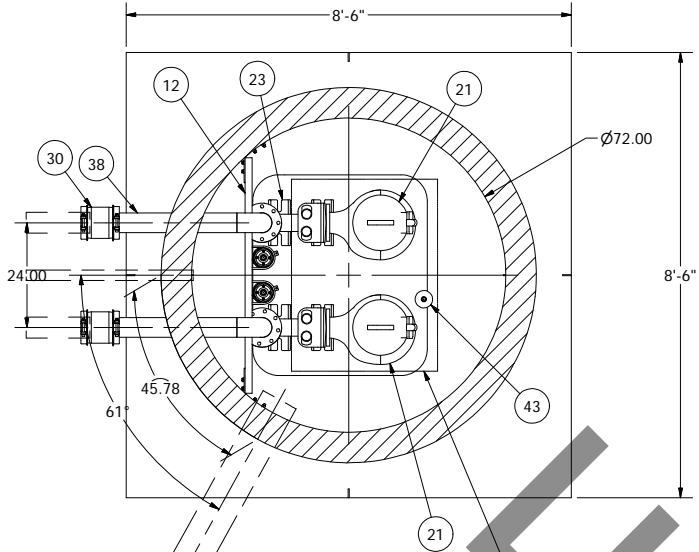


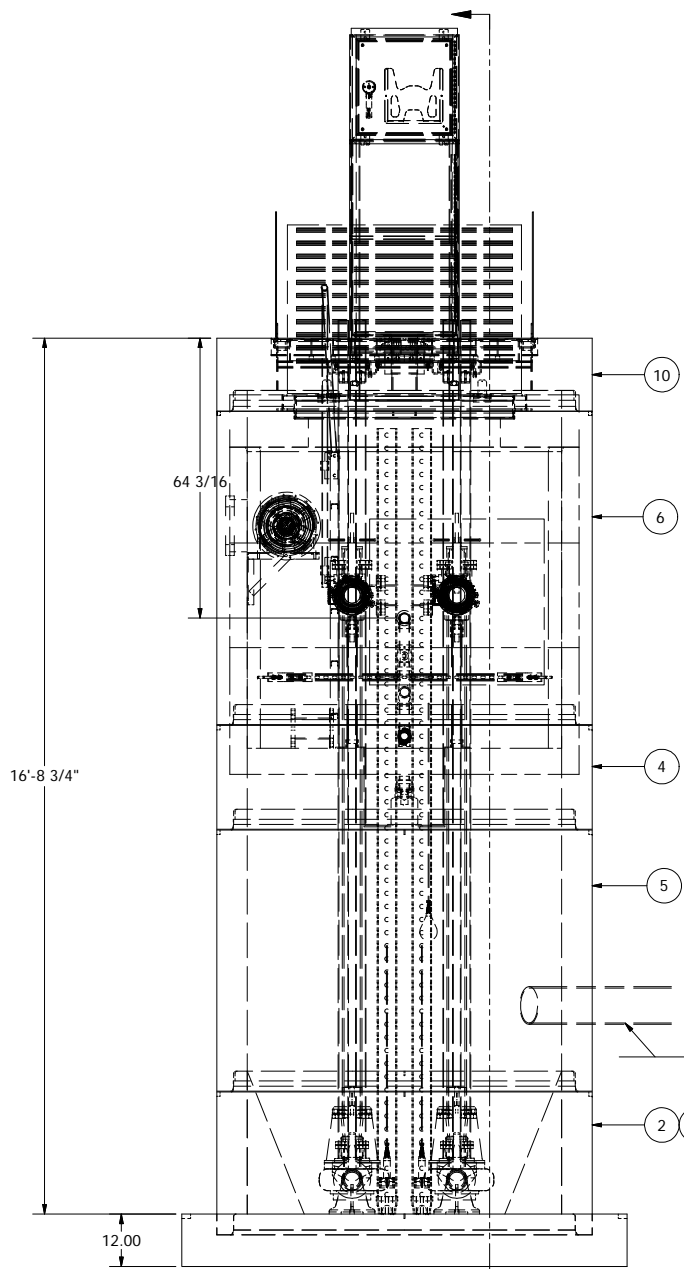
SENSOR AND ELEVATION TABLE		
LEVEL ELEVATION	DISTANCE BETWEEN POINTS	SET POINT DESCRIPTION
262.50		INVERT IN
N/A		BACK UP PUMPS START
	N/A	SENSOR SPACING
N/A		BACK UP PUMPS STOP
	N/A	SENSOR SPACING
262.45		BACK UP HL ALARM
262.35		HIGH LEVEL ALARM
	0.50	SENSOR SPACING
261.85		LAG PUMP START
	0.50	SENSOR SPACING
261.35		LEAD PUMP START
	1.00	SENSOR SPACING
260.35		PUMP STOP
	1.50	DISTANCE TO FLOOR
258.85		FLOOR ELEVATION



PIPE PENETRATION NOTE:
ALL PIPE PENETRATIONS IN THE WET WELL ARE TO BE EPOXY GROUTED BY THE CONTRACTOR. NOT ROMTEC UTILITIES

**6' DIAMETER WET WELL
4" DISCHARGE PIPING
FLYGT PUMPS
4"- 6' X 8' VALVE VAULT**

NOTE: WET WELL TOP SLAB IS PEDESTRIAN RATED

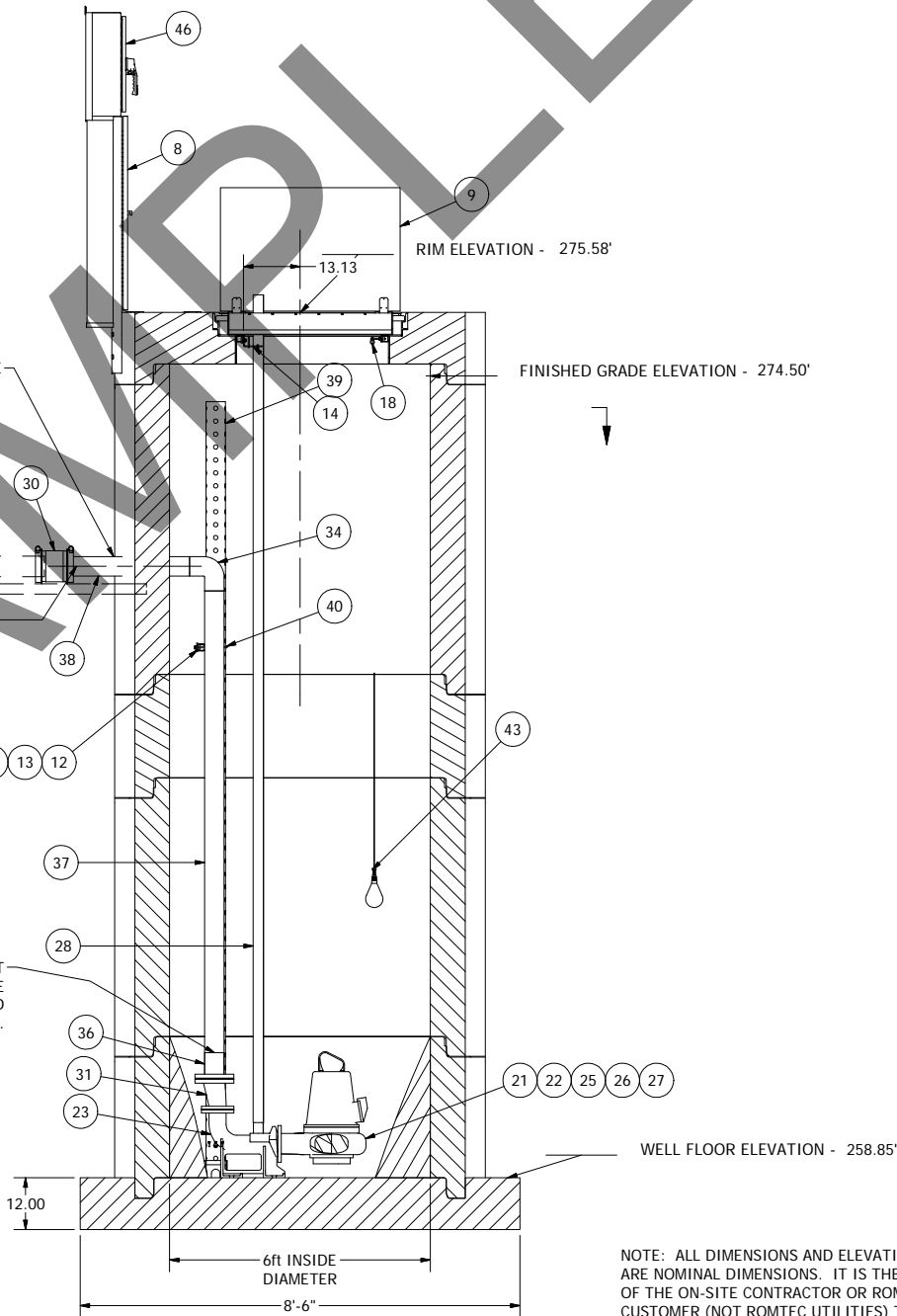


SEE VALVE VAULT SECTION FOR DETAILS

SEE NOTE

CENTERLINE DISCHARGE
ELEVATION - 270.67'

CONTRACTOR MUST FIELD FIT
AND WELD FLANGE TO DISCHARGE
PIPE AFTER WET WELL IS INSTALLED
IN THE GROUND.



NOTE: ALL DIMENSIONS AND ELEVATIONS SHOWN ARE NOMINAL DIMENSIONS. IT IS THE RESPONSIBILITY OF THE ON-SITE CONTRACTOR OR ROMTEC UTILITIES CUSTOMER (NOT ROMTEC UTILITIES) TO VERIFY THE ACCURACY OF ANY CRITICAL DIMENSIONS OR ELEVATIONS PRIOR TO SETTING OR INSTALLING ANY EQUIPMENT.

ALL MATERIALS SHOWN ON THIS SHEET WILL BE SUPPLIED BY ROMTEC UTILITIES AND DELIVERED TO THE SITE AFTER THE HOLE HAS BEEN EXCAVATED AND SHORED. THE CONTRACTOR SHALL SUPPLY A CRANE OF SUFFICIENT SIZE TO LOWER ALL THE CONCRETE PIECES INTO THE HOLE SAFELY. THE THE CONTRACTOR SHALL INSTALL THE WET WELL (AND VALVE VAULT AND METERING VAULT IF APPLICABLE). ROMTEC UTILITIES WILL PROVIDE A REPRESENTATIVE FOR TECHNICAL ASSISTANCE ON THE DAY OF INSTALLATION TO ANSWER ANY QUESTIONS THAT MAY ARISE. THE CONTRACTOR IS RESPONSIBLE FOR ALL PLUMBING AND ELECTRICAL CONNECTIONS AND INSTALLATION. ITEMS NOTED AS "BY OTHERS" WILL BE PROVIDED AND INSTALLED BY THE CONTRACTOR. ROMTEC UTILITIES WILL NOT INSTALL ANY OF THE COMPONENTS SHOWN ON THIS PAGE.

© 2015 ROMTEC INC. ALL RIGHTS RESERVED. THESE PLANS AND DRAWINGS MAY NOT BE REPRODUCED, ADAPTED, OR FURTHER DISTRIBUTED, AND NO COMPONENTS MAY BE CONSTRUCTED FROM THESE PLANS, WITHOUT WRITTEN PERMISSION OF ROMTEC, INC.

REVISION HISTORY		DATE	APPROV
4	NEW INLET ELEVATION - 1FT LOWER	1-4-16	AD
3	REVISED PER SITE LAYOUT	12-8-15	AD
2	REVISED PER 10/22/15 COMMENTS	11-2-15	AD
1	REVISED PER COMMENTS	10-1-15	AD
0	INITIAL DESIGN	7-22-15	AD
REV	DESCRIPTION	DATE	APPROV

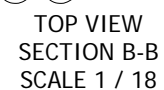
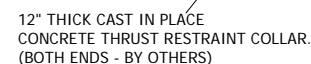
**COMPONENT
DRAWING**

**ROMTEC
UTILITIES**
18240 NORTH BANK ROAD
ROSEBURG, OREGON 97470
(541) 496-9678
FAX (541) 496-0804

**BAYSIDE - SB2
6ft WET WELL - 4in PIPING**

SHEET
1 OF 2

JOB NUMBER
**RMTC
0000**



Technical drawing of a pump station, showing a profile view (Section A-A) and an inlet view.

Profile View (Section A-A): This view shows the internal components of the pump station, including the pump, motor, and various pipes and valves. Key dimensions include 18.00, 30.00, and 7'-0". The drawing is labeled with various components (1 through 33) and includes the text "RIM & FINISHED GRADE ELEVATION - 274.50'" and "DISCHARGE C.L. ELEVATION: 270.67'".

Inlet View: This view shows the internal layout of the pump station, including the pump, motor, and various pipes and valves. It is labeled with components (1 through 10.4) and includes the text "INLET VIEW SCALE 1 / 18".

© 2015 ROMTEC INC. ALL RIGHTS RESERVED. THESE
PLANS AND DRAWINGS MAY NOT BE REPRODUCED,
ADAPTED, OR FURTHER DISTRIBUTED, AND NO
COMPONENTS MAY BE CONSTRUCTED FROM THESE
PLANS. WITHOUT WRITTEN PERMISSION OF ROMTEC, INC.

NOTE: ALL DIMENSIONS AND ELEVATIONS SHOWN ARE NOMINAL DIMENSIONS. IT IS THE RESPONSIBILITY OF THE ON-SITE CONTRACTOR OR ROMTEC UTILITIES CUSTOMER (NOT ROMTEC UTILITIES) TO VERIFY THE ACCURACY OF ANY CRITICAL DIMENSIONS OR ELEVATIONS PRIOR TO SETTING OR INSTALLING ANY EQUIPMENT.

4	UPDATED FAN BLOWER LOCATION & BRACKET	12-8-15	AD
3	REVISED PER 10/7/22/15 COMMENTS	11-3-15	AD
1	REVISED PER COMMENTS	10-1-15	AD
0	INITIAL DESIGN	7-28-15	KB
REV	DESCRIPTION	DATE	APPROV

VERIFY SCALE
BAR IS ONE INCH ON
ORIGINAL DRAWING

0 ————— 1"

IF NOT ONE INCH ON
THIS SHEET, ADJUST
SCALE'S ACCORDINGLY

COMPONENT DRAWING



BAYSIDE - SB2
VALVE VAULT ASSEMBLY

SHEET
2 OF 2

JOB NUMBER
RMTC
0000