

© 2011 ROMTEC INC. ALL RIGHTS RESERVED. THESE
PLANS AND DRAWINGS MAY NOT BE REPRODUCED,
ADAPTED, OR FURTHER DISTRIBUTED, AND NO
COMPONENTS MAY BE CONSTRUCTED FROM THESE
PLANS, WITHOUT WRITTEN PERMISSION OF ROMTEC, INC.

REVISION HISTORY	DATE	DESCRIPTION	REV
REVISED PER LAUNCH MEETING	9-18-12		AD
COMPONENT DRAWING	03/08/12		AWI

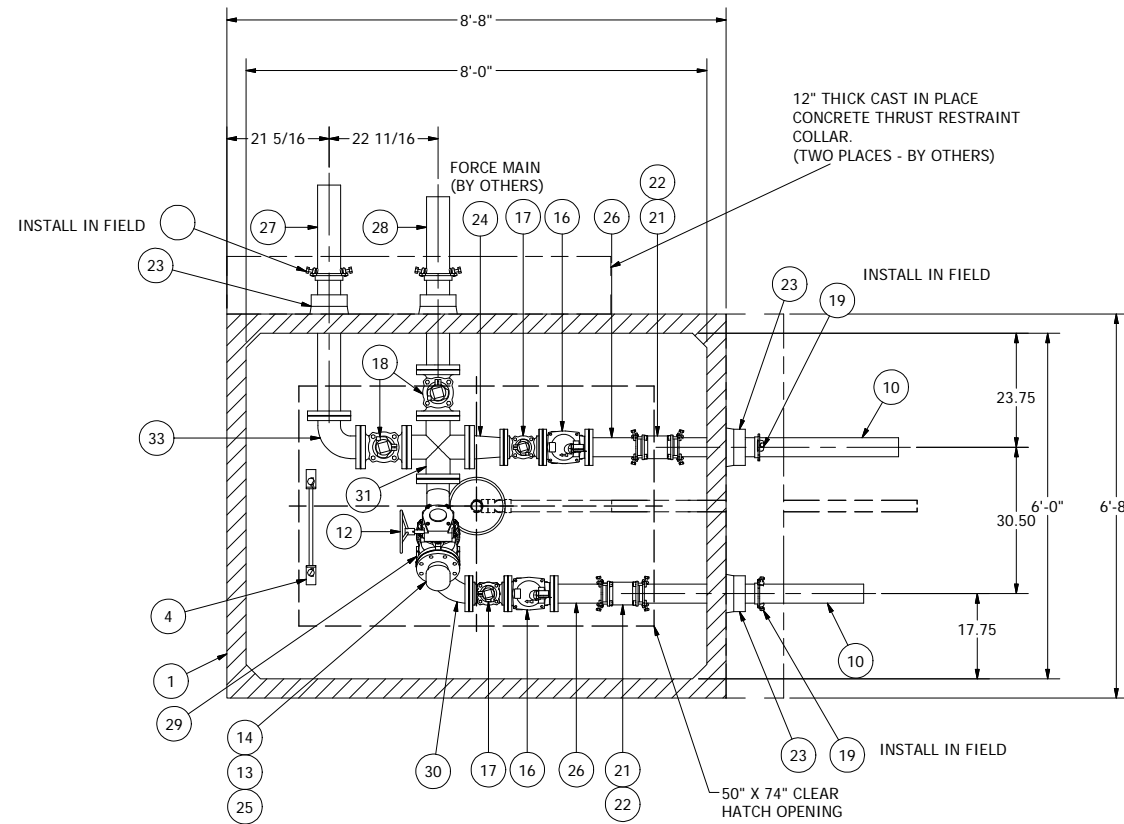
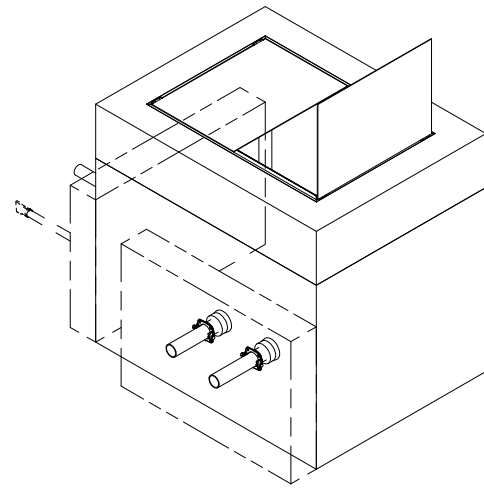
DRIVING GEOMETRY
IS ACCURATE AND
CREATED AT 1:1 AND
FIT TO THE SHEET.
DO NOT SCALE
THIS DRAWING

DSN - AM
DIRN - AM
CKD - AM
DATE - 03/08/12

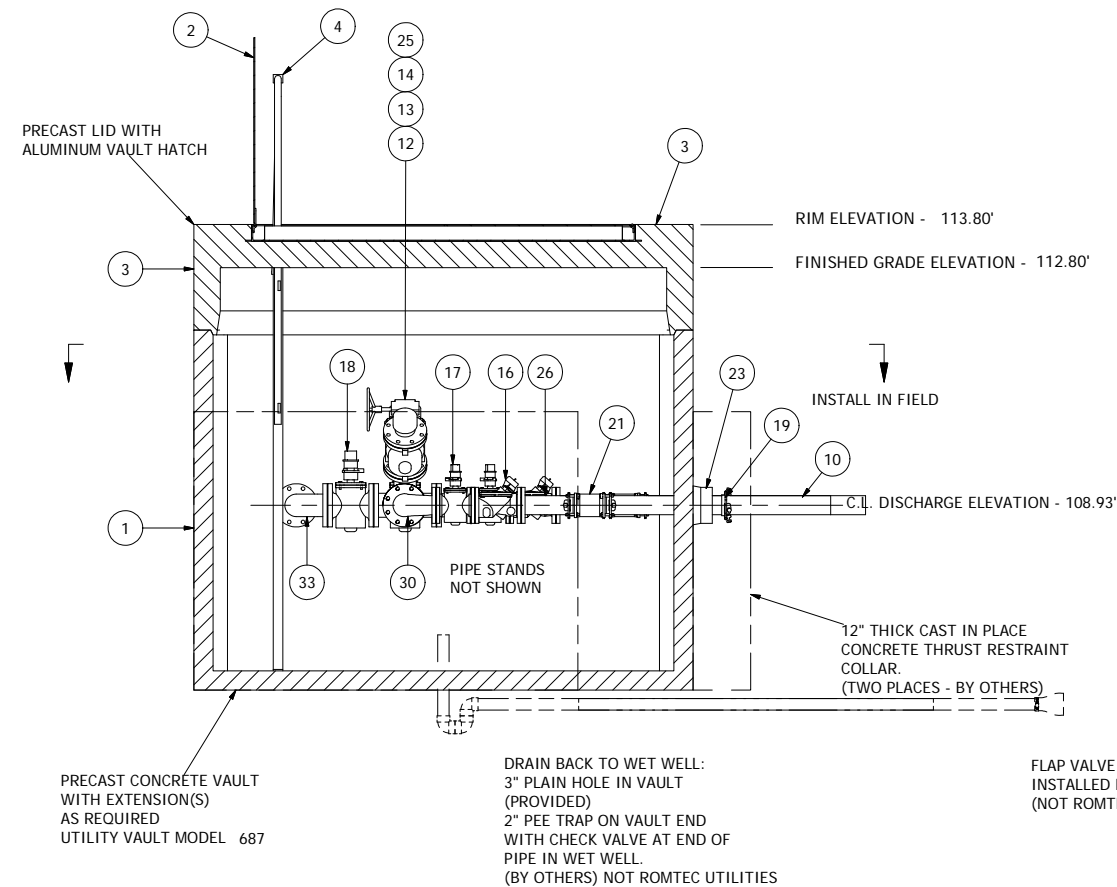
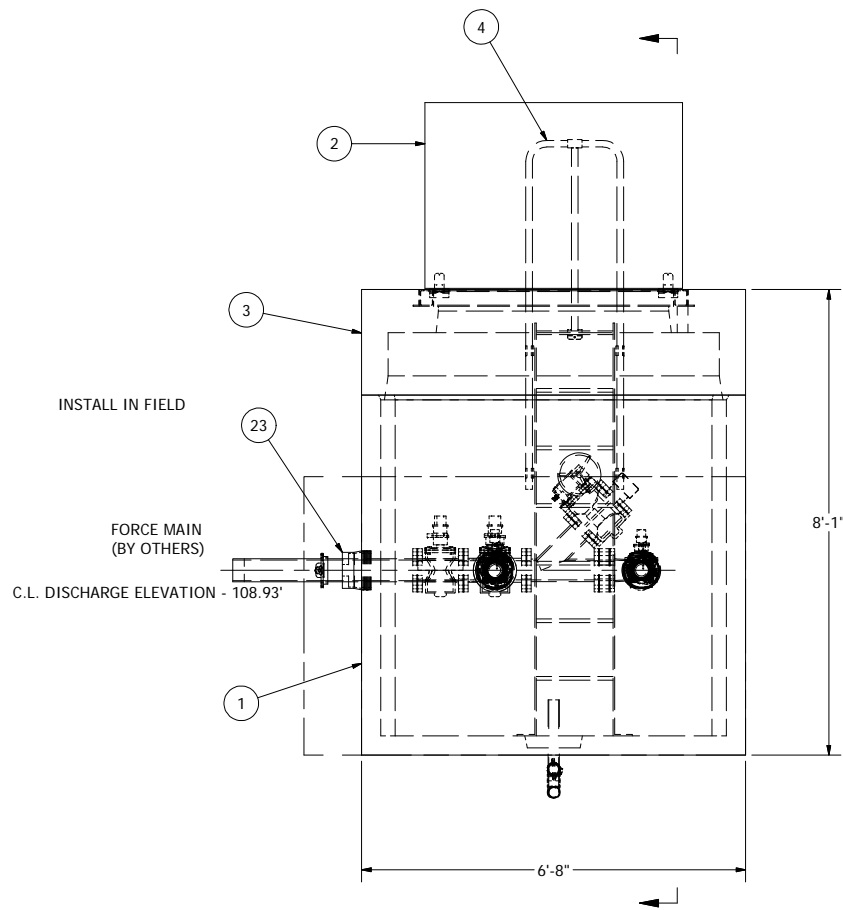
**COMPONENT
DRAWING**

**ROMTEC
UTILITIES**
18240 NORTH BANK ROAD
ROSEBURG, OREGON 97470
(541) 496-9678
FAX (541) 496-0804

CITY OF THE DALLES
STEVE BYERS
MEADOWS
3" - 6' DIA WET WELL



NOTE: VAULT TOP SLAB IS PEDESTRIAN RATED



NOTE: ALL DIMENSIONS AND ELEVATIONS SHOWN ARE NOMINAL DIMENSIONS. IT IS THE RESPONSIBILITY OF THE ON-SITE CONTRACTOR OR ROMTEC UTILITIES CUSTOMER (NOT ROMTEC UTILITIES) TO VERIFY THE ACCURACY OF ANY CRITICAL DIMENSIONS OR ELEVATIONS PRIOR TO SETTING OR INSTALLING ANY EQUIPMENT.

© 2011 ROMTEC INC. ALL RIGHTS RESERVED. THESE PLANS AND DRAWINGS MAY NOT BE REPRODUCED, ADAPTED, OR FURTHER DISTRIBUTED, AND NO COMPONENTS MAY BE CONSTRUCTED FROM THESE PLANS, WITHOUT WRITTEN PERMISSION OF ROMTEC, INC.

DRAWING SECURITY IS ASSURED AND CREATED AT 1:1 AND FIT TO THE SHEET DO NOT SCALE THIS DRAWING

DSN - AM
DRN - AM
CKD - AM
DATE - 03/08/12

REV	DESCRIPTION	DATE	APPROV
3	CHANGED CROSS TO 4IN ALL AROUND, AND ADDED REDUCER	10/24/12	NG
2	CHANGED PUMPING PORT PIPING TO 4IN COMPONENT DRAWING	6/7/12	AD
1		03/08/12	AM

COMPONENT DRAWING

ROMTEC UTILITIES
18240 NORTH BANK ROAD
ROSEBURG, OREGON 97470
(541) 496-9678
FAX (541) 496-0804

CITY OF THE DALLES
STEVE BYERS

MEADOWS

3" - 687 VALVE VAULT

SHEET
2 OF 2

JOB NUMBER
**RMTC
0000**