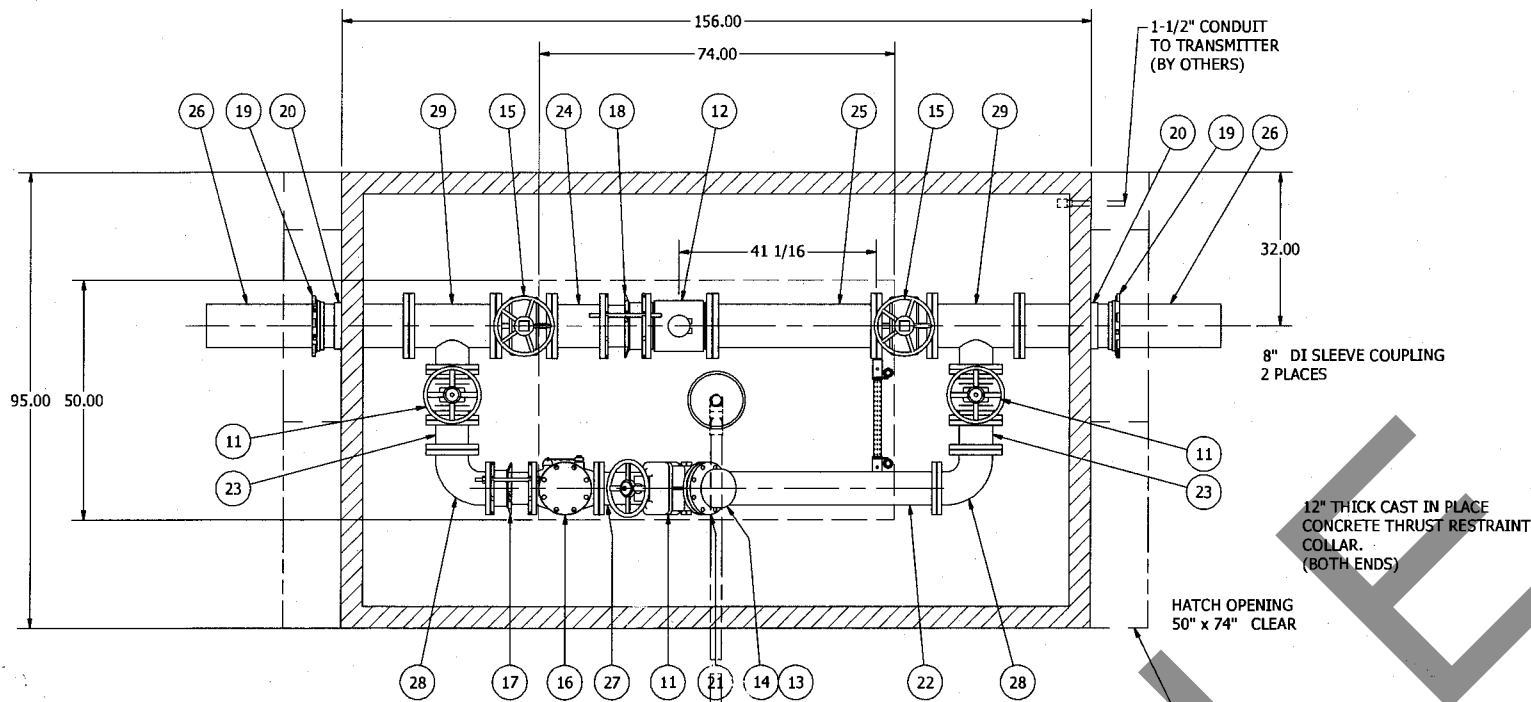


**712 METER VAULT**  
**8" PIPING AND VALVES**  
**W/ 6" BYPASS & 6" PUMPING PORT**



TOP VIEW  
 SECTION B-B  
 SCALE 1 / 20

PRECAST CONCRETE VAULT  
 WITH EXTENSION(S)  
 AS REQUIRED  
 UTILITY VAULT MODEL 712

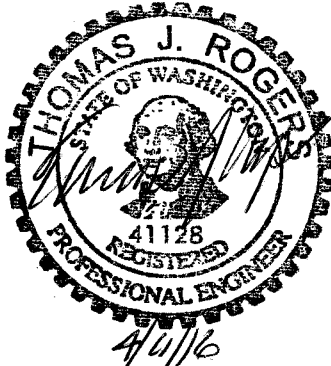
PRECAST LID WITH  
 ALUMINUM VAULT HATCH

NOTE: ALL DUCTILE IRON PIPING AND FITTINGS  
 INSIDE THE VAULT ARE TO BE COATED:

EXTERIOR:  
 A. ONE COAT OF EPOXOLINE PRIMER TNMEC 66,  
 4-6MILS  
 B. ONE COAT OF HI-BUILD EPOXOLINE TNMEC 66,  
 3-5MILS, FOREST GREEN  
 C. ONE COAT ENDURASHIELD III TNMEC 73, 3-5  
 MILS, FOREST GREEN

INTERIOR:  
 LINED WITH PROTECTO 401

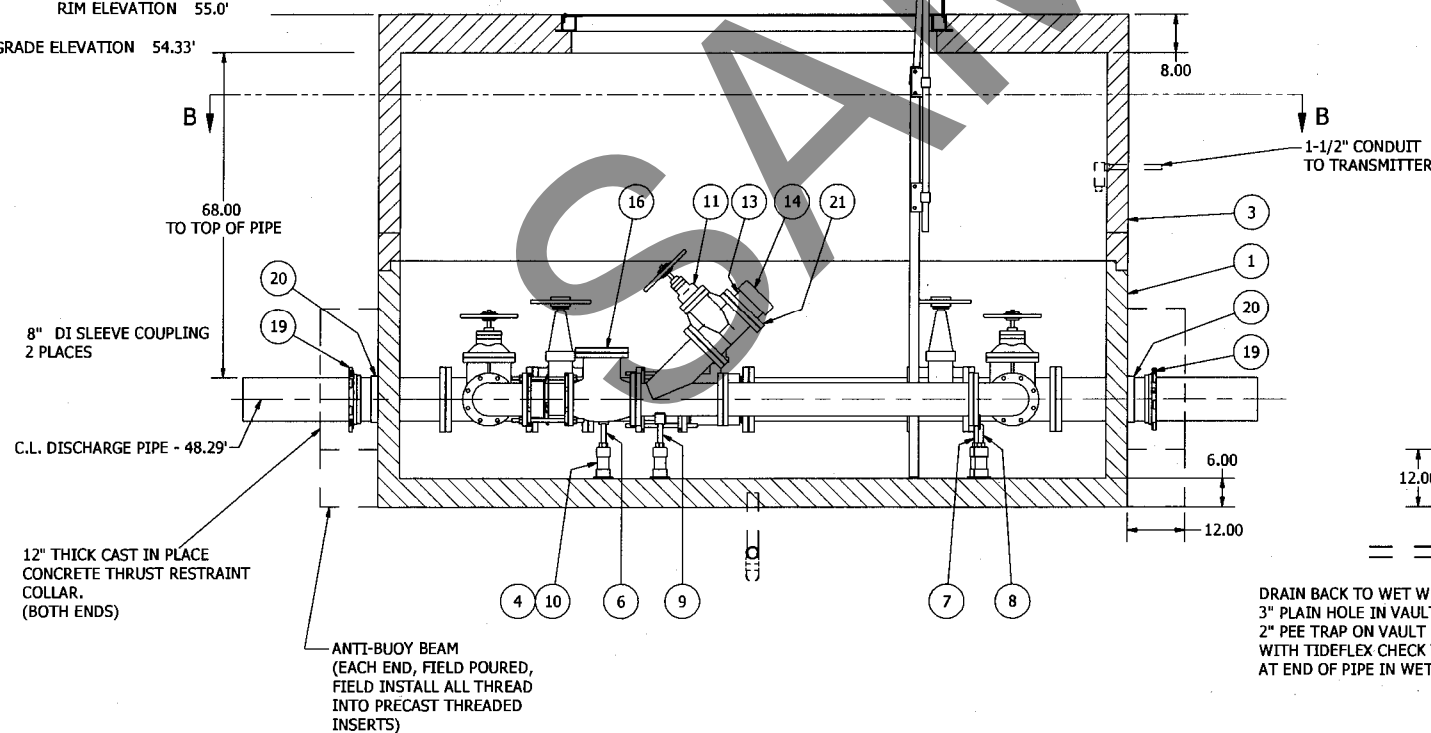
NOTE:  
 EXTERIOR CONCRETE COATING -  
 THE EXTERIOR OF THE VAULT BELOW GRADE  
 SHALL BE PAINTED WITH TWO COATS OF  
 BLACK BITUMASTIC SOLUTION 9-13 MILS EACH  
 COAT). THE VAULT SHALL BE DRY WITH NO  
 MOISTURE PRESENT PRIOR TO APPLICATIONS  
 OF COATINGS.



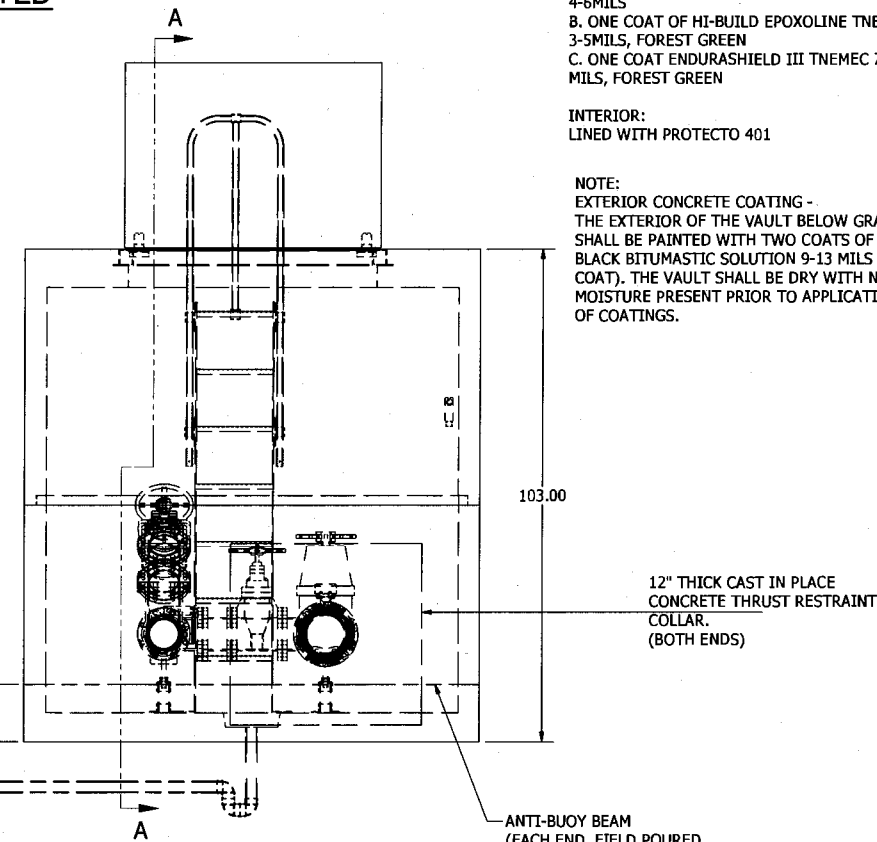
© 2015 ROMTEC INC. ALL RIGHTS RESERVED.  
 THESE PLANS AND DRAWINGS MAY NOT BE  
 REPRODUCED, ADAPTED, OR FURTHER DISTRIBUTED.

NOTE: VAULT TOP SLAB IS PEDESTRIAN RATED

RIM ELEVATION 55.0'  
 FINISHED GRADE ELEVATION 54.33'



PROFILE VIEW  
 SECTION A-A  
 SCALE 1 / 20



INLET VIEW  
 SCALE 1 / 20

NOTE: ALL DUCTILE IRON PIPING AND FITTINGS  
 INSIDE THE VAULT ARE TO BE COATED:

EXTERIOR:  
 A. ONE COAT OF EPOXOLINE PRIMER TNMEC 66,  
 4-6MILS  
 B. ONE COAT OF HI-BUILD EPOXOLINE TNMEC 66,  
 3-5MILS, FOREST GREEN  
 C. ONE COAT ENDURASHIELD III TNMEC 73, 3-5  
 MILS, FOREST GREEN

INTERIOR:  
 LINED WITH PROTECTO 401

NOTE:  
 EXTERIOR CONCRETE COATING -  
 THE EXTERIOR OF THE VAULT BELOW GRADE  
 SHALL BE PAINTED WITH TWO COATS OF  
 BLACK BITUMASTIC SOLUTION 9-13 MILS EACH  
 COAT). THE VAULT SHALL BE DRY WITH NO  
 MOISTURE PRESENT PRIOR TO APPLICATIONS  
 OF COATINGS.

DRAIN BACK TO WET WELL:  
 3" PLAIN HOLE IN VAULT  
 2" PEE TRAP ON VAULT END  
 WITH TIDEFLEX CHECK VALVE  
 AT END OF PIPE IN WET WELL.

NOTE: ALL DIMENSIONS AND ELEVATIONS SHOWN  
 ARE NOMINAL DIMENSIONS. IT IS THE RESPONSIBILITY  
 OF THE CONTRACTOR TO VERIFY THE ACCURACY OF  
 ANY CRITICAL DIMENSIONS OR ELEVATIONS PRIOR  
 TO SETTING OR INSTALLING ANY EQUIPMENT.

REV	DESCRIPTION	DATE	APPROV
4	Added exterior concrete and pipe coating	4-8-16	AD
3	Revised per 11/3/15 comments	11/3/15	AD
2	6" BYPASS PIPING, 6" PUMPING PORT, PROTECTO 401	10-6-15	KB
1	USED PROPER VALVE MODEL	8-26-15	KB
0	INITIAL DESIGN	7-30-15	KB

**COMPONENT  
 DRAWING**

**ROMTEC  
 UTILITIES**  
 18240 NORTH BANK ROAD  
 ROSEBURG, OREGON 97470  
 (541) 496-9678  
 FAX (541) 496-0804

SAMMAMISH PLATEAU WATER AND SEWER DISTRICT  
 FREEGARD LIFT STATION  
**METER AND BYPASS  
 METER VAULT ASSEMBLY**

SHEET  
**5 OF 5**  
 JOB NUMBER  
**RMTC  
 0000**