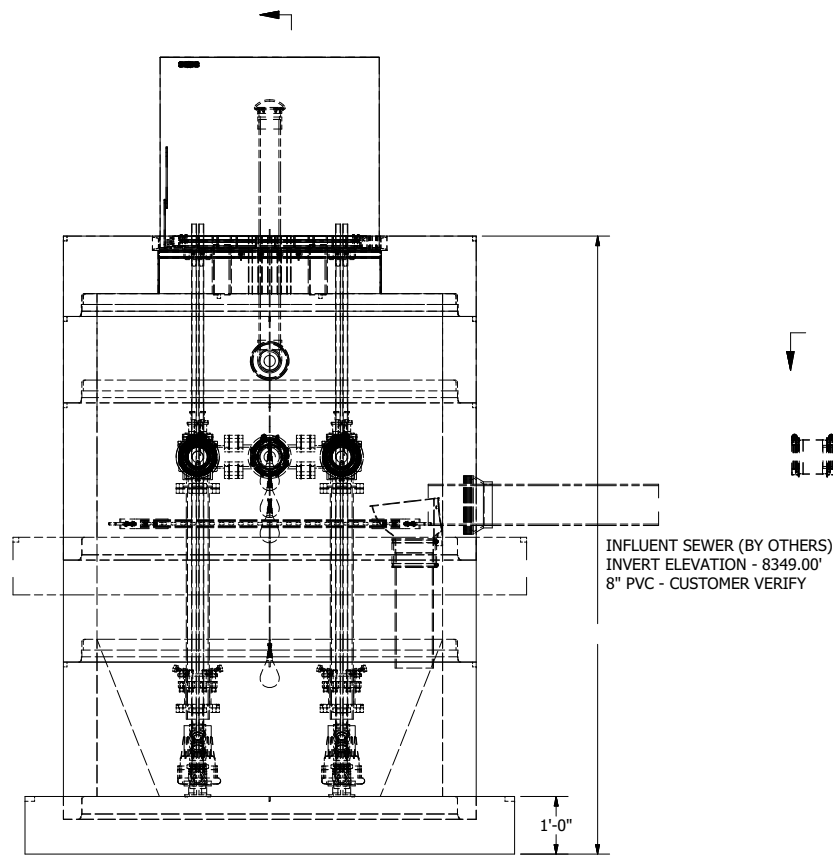
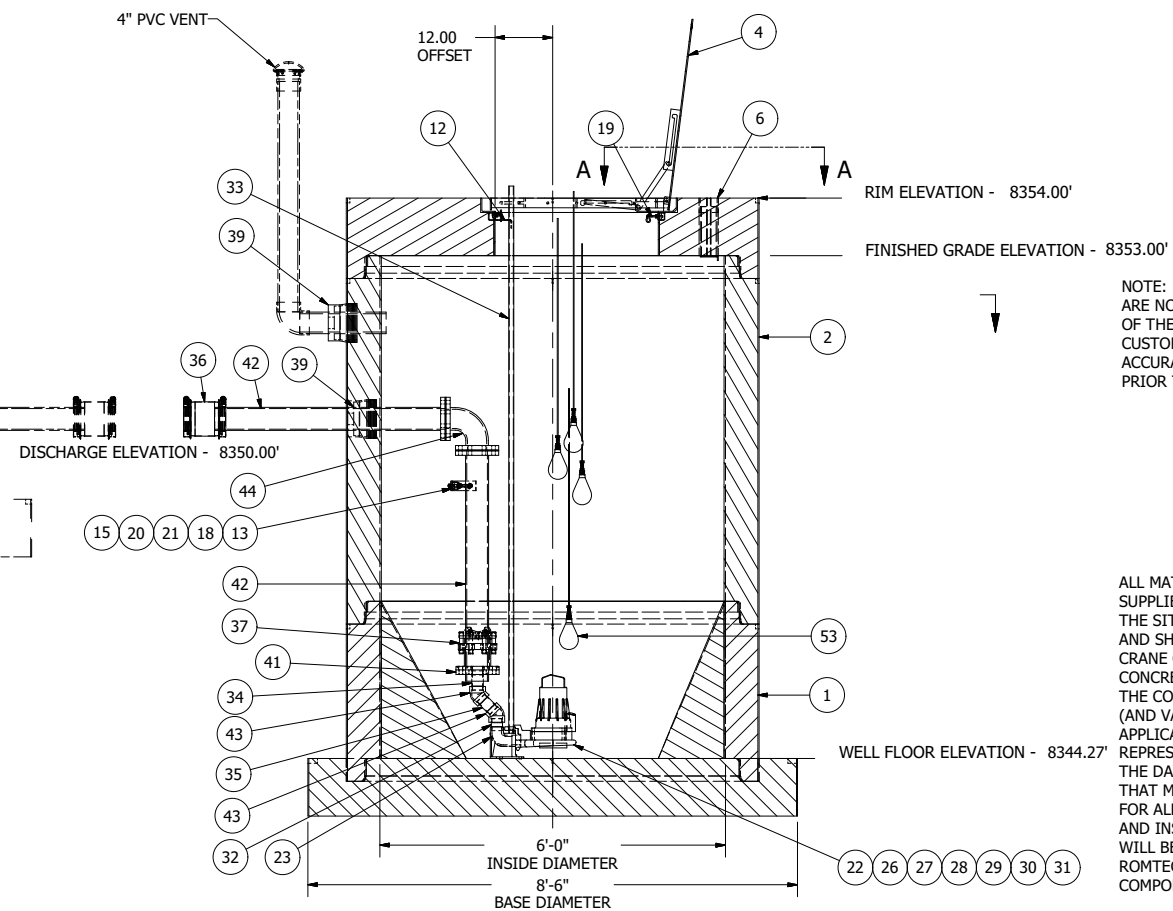


NOTE: WET WELL TOP SLAB IS PEDESTRIAN RATED



© 2010 ROMTEC INC. ALL RIGHTS RESERVED. THESE PLANS AND DRAWINGS MAY NOT BE REPRODUCED, ADAPTED, OR FURTHER DISTRIBUTED, AND NO COMPONENTS MAY BE CONSTRUCTED FROM THESE PLANS, WITHOUT WRITTEN PERMISSION OF ROMTEC, INC.



NOTE: ALL DIMENSIONS AND ELEVATIONS SHOWN ARE NOMINAL DIMENSIONS. IT IS THE RESPONSIBILITY OF THE ON-SITE CONTRACTOR OR ROMTEC UTILITIES CUSTOMER (NOT ROMTEC UTILITIES) TO VERIFY THE ACCURACY OF ANY CRITICAL DIMENSIONS OR ELEVATIONS PRIOR TO SETTING OR INSTALLING ANY EQUIPMENT.

ALL MATERIALS SHOWN ON THIS SHEET WILL BE SUPPLIED BY ROMTEC UTILITIES AND DELIVERED TO THE SITE AFTER THE HOLE HAS BEEN EXCAVATED AND SHORED. THE CONTRACTOR SHALL SUPPLY A CRANE OF SUFFICIENT SIZE TO LOWER ALL THE CONCRETE PIECES INTO THE HOLE SAFELY. THE CONTRACTOR SHALL INSTALL THE WET WELL (AND VALVE VAULT AND METERING VAULT IF APPLICABLE). ROMTEC UTILITIES WILL PROVIDE A REPRESENTATIVE FOR TECHNICAL ASSISTANCE ON THE DAY OF INSTALLATION TO ANSWER ANY QUESTIONS THAT MAY ARISE. THE CONTRACTOR IS RESPONSIBLE FOR ALL PLUMBING AND ELECTRICAL CONNECTIONS AND INSTALLATION. ITEMS NOTED AS "BY OTHERS" WILL BE PROVIDED AND INSTALLED BY THE CONTRACTOR. ROMTEC UTILITIES WILL NOT INSTALL ANY OF THE COMPONENTS SHOWN ON THIS PAGE.

VERIFY SCALE
BAR IS ONE INCH ON
ORIGINAL DRAWING
0 1"

IF NOT ONE INCH ON
THIS SHEET, ADJUST
SCALES ACCORDINGLY

COMPONENT
DRAWING

**ROMTEC
UTILITIES**
18240 NORTH BANK ROAD
ROSEBURG, OREGON 97470
(541) 496-9678
FAX (541) 496-0804

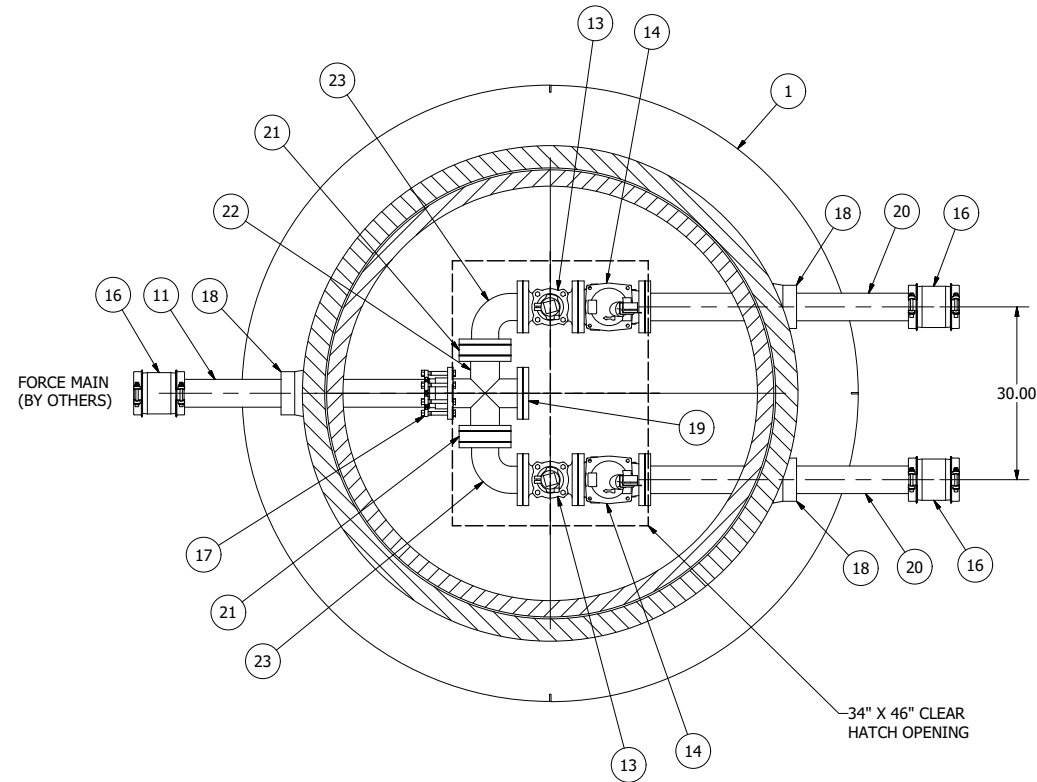
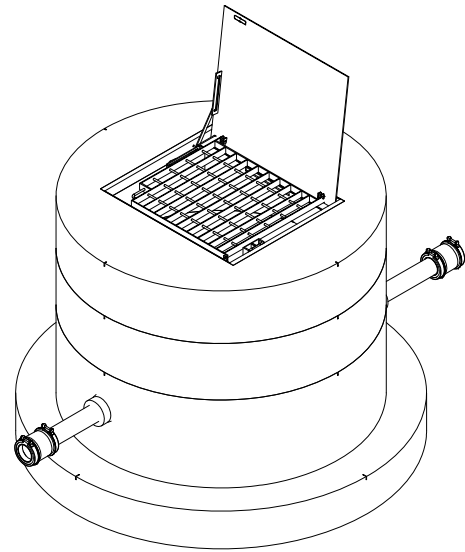
USDA FOREST SERVICE
GERARDO CHAVARRIA
GREENRIDGE LIFT STATION
4" - 6' DIA WET WELL

SHEET
1 OF 2

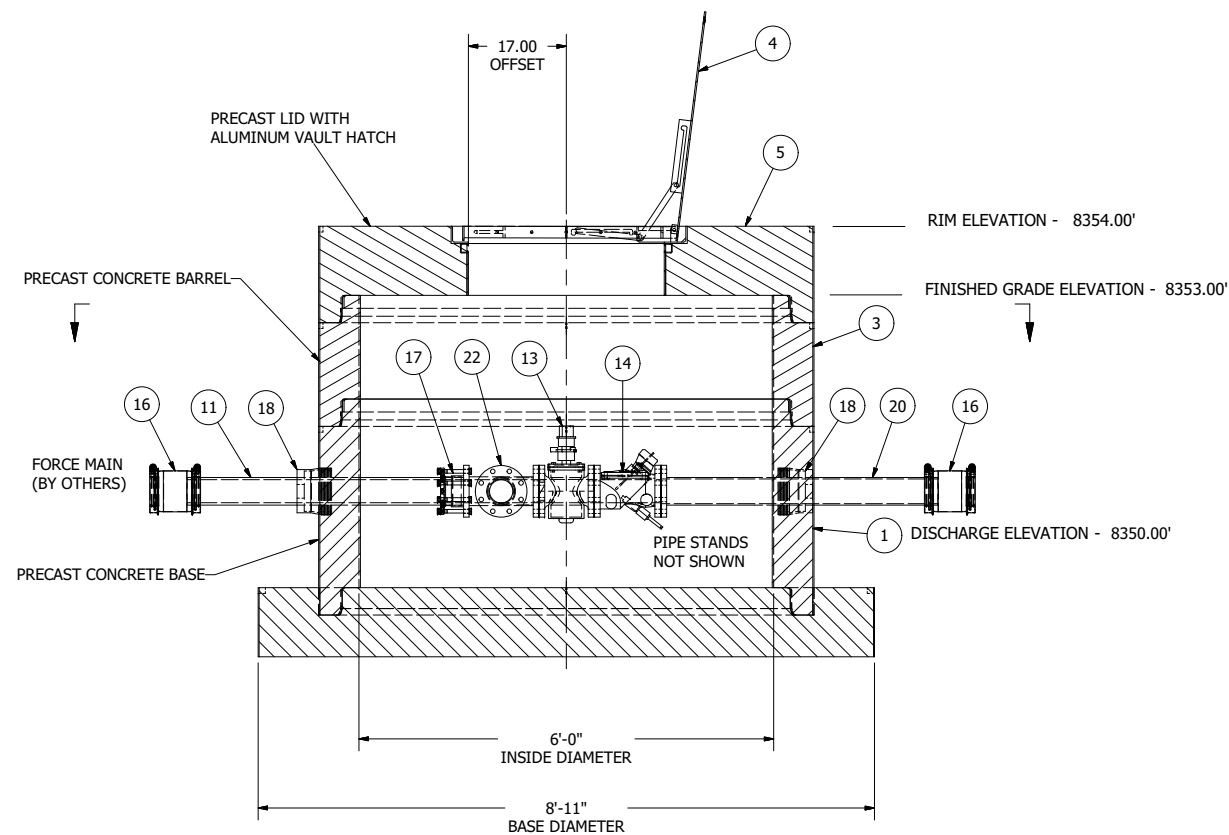
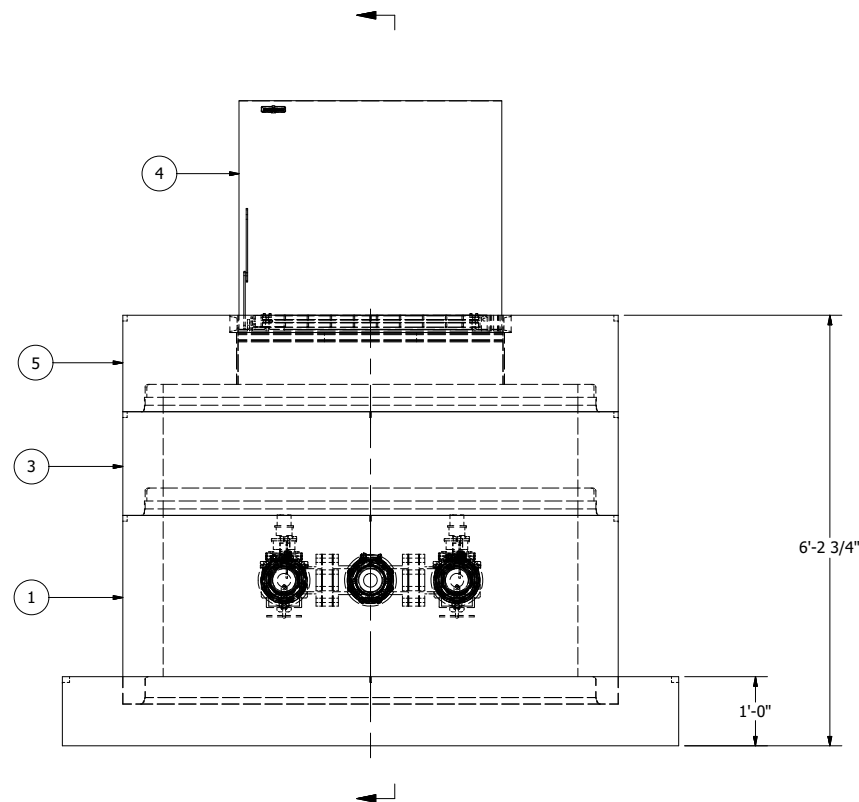
JOB NUMBER
RMTC
0000

REV	DESCRIPTION	DATE	APPROV
3	ITEM 41 WAS ECCENTRIC NOW CONCENTRIC	09/27/10	AM
2	UPDATED FOR LAUNCH DOCS	9-14-10	AD
1	REVISED COMPONENT DRAWING	08/17/10	AM

REVISION HISTORY



NOTE: VAULT TOP SLAB IS PEDESTRIAN RATED



NOTE: ALL DIMENSIONS AND ELEVATIONS SHOWN ARE NOMINAL DIMENSIONS. IT IS THE RESPONSIBILITY OF THE ON-SITE CONTRACTOR OR ROMTEC UTILITIES CUSTOMER (NOT ROMTEC UTILITIES) TO VERIFY THE ACCURACY OF ANY CRITICAL DIMENSIONS OR ELEVATIONS PRIOR TO SETTING OR INSTALLING ANY EQUIPMENT.

**6' DIA VALVE VAULT
4" PIPING AND VALVES**

VERIFY SCALE
BAR IS ONE INCH ON
ORIGINAL DRAWING
0 IF NOT ONE INCH ON
THIS SHEET, ADJUST
SCALES ACCORDINGLY

DSN - AM
DRN - AM
CKD -
DATE - 08/17/10

**COMPONENT
DRAWING**

**ROMTEC
UTILITIES**
18240 NORTH BANK ROAD
ROSEBURG, OREGON 97470
(541) 496-9678
FAX (541) 496-0804

USDA FOREST SERVICE
GERARDO CHAVARRIA
**GREENRIDGE LIFT STATION
4" - 6' DIA VALVE VAULT**

SHEET
2 OF 2

JOB NUMBER
**RMTC
0000**

2 UPDATE FOR PRODUCTION LAUNCH 9-14-10 AD
1 REVISED COMPONENT DRAWING 08/17/10 AM
1 REV DESCRIPTION DATE APPROV
REVISION HISTORY