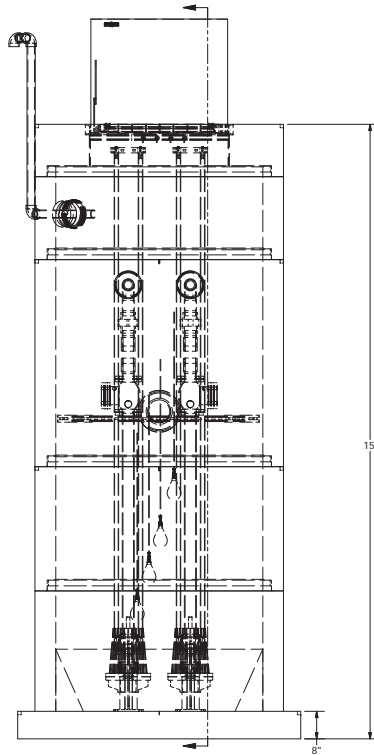


NOTE: ALL DIMENSIONS AND ELEVATIONS SHOWN ARE NOMINAL DIMENSIONS. IT IS THE RESPONSIBILITY OF THE ON-SITE CONTRACTOR OR ROMTEC UTILITIES CUSTOMER (NOT ROMTEC UTILITIES) TO VERIFY THE ACCURACY OF ANY CRITICAL DIMENSIONS OR ELEVATIONS PRIOR TO SETTING OR INSTALLING ANY EQUIPMENT.

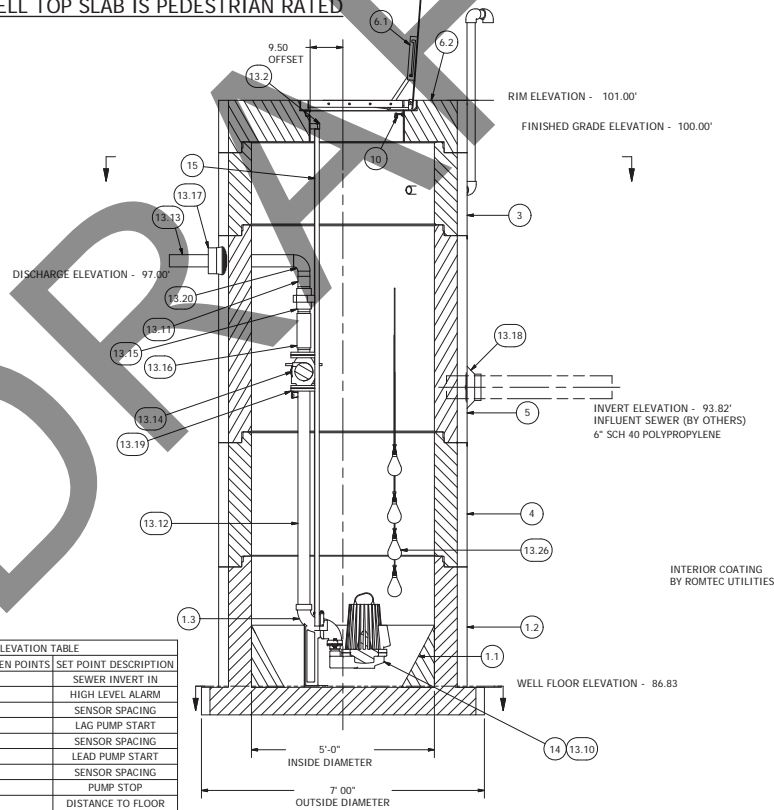
**5' DIAMETER WET WELL
3" SS DISCHARGE PIPING
GOULDS GRINDER (2 each)**

REV	DESCRIPTION	DATE	APPROV
5	REVISED INLET ELEVATION PER CUSTOMER	3-14-13	AD
4	REVISED INLET ELEVATION PER CUSTOMER	2-13-13	MG
3	REVISED BACK TO GOULDS PUMPS	12-24-12	AD
2	REVISED FOR STAINLESS STEEL PUMPS AND 3IN	12-7-12	AD
1	REVISED FOR SCRIPT FONT	10/12/2012	AD

NOTE: WET WELL TOP SLAB IS PEDESTRIAN RATED



SENSOR AND ELEVATION TABLE		
LEVEL ELEVATION	DISTANCE BETWEEN POINTS	SET POINT DESCRIPTION
93.82		SEWER INVERT IN
90.83		HIGH LEVEL ALARM
	0.50	SENSOR SPACING
90.33		LAG PUMP START
	0.50	SENSOR SPACING
89.83		LEAD PUMP START
	1.00	SENSOR SPACING
88.83		PUMP STOP
	2.00	DISTANCE TO FLOOR
86.83		FLOOR ELEVATION



© 2011 ROMTEC INC. ALL RIGHTS RESERVED. THESE PLANS AND DRAWINGS MAY NOT BE REPRODUCED, ADAPTED, OR FURTHER DISTRIBUTED, AND NO COMPONENTS MAY BE CONSTRUCTED FROM THESE PLANS, WITHOUT WRITTEN PERMISSION OF ROMTEC, INC.

ALL MATERIALS SHOWN ON THIS SHEET WILL BE SUPPLIED BY ROMTEC UTILITIES AND DELIVERED TO THE SITE AFTER THE HOLE HAS BEEN EXCAVATED AND SHORED. THE CONTRACTOR SHALL SUPPLY A CRANE OF SUFFICIENT SIZE TO LOWER ALL THE CONCRETE PIECES INTO THE HOLE SAFELY. THE CONTRACTOR SHALL INSTALL THE WET WELL (AND VALVE VAULT AND METERING VAULT IF APPLICABLE). ROMTEC UTILITIES WILL PROVIDE A REPRESENTATIVE FOR TECHNICAL ASSISTANCE ON THE DAY OF INSTALLATION TO ANSWER ANY QUESTIONS THAT MAY ARISE. THE CONTRACTOR IS RESPONSIBLE FOR ALL PLUMBING AND ELECTRICAL CONNECTIONS AND INSTALLATION. ITEMS NOTED AS "BY OTHERS" WILL BE PROVIDED AND INSTALLED BY THE CONTRACTOR. ROMTEC UTILITIES WILL NOT INSTALL ANY OF THE COMPONENTS SHOWN ON THIS PAGE.

COMPONENT DRAWING

ROMTEC UTILITIES
18240 NORTH BANK ROAD
ROSEBURG, OREGON 97470
(541) 496-9678
FAX (541) 496-0804

MARATHON PETROLEUM
3" - 5' DIA WET WELL

SHEET
1 OF 1

JOB NUMBER
RMTC
0000