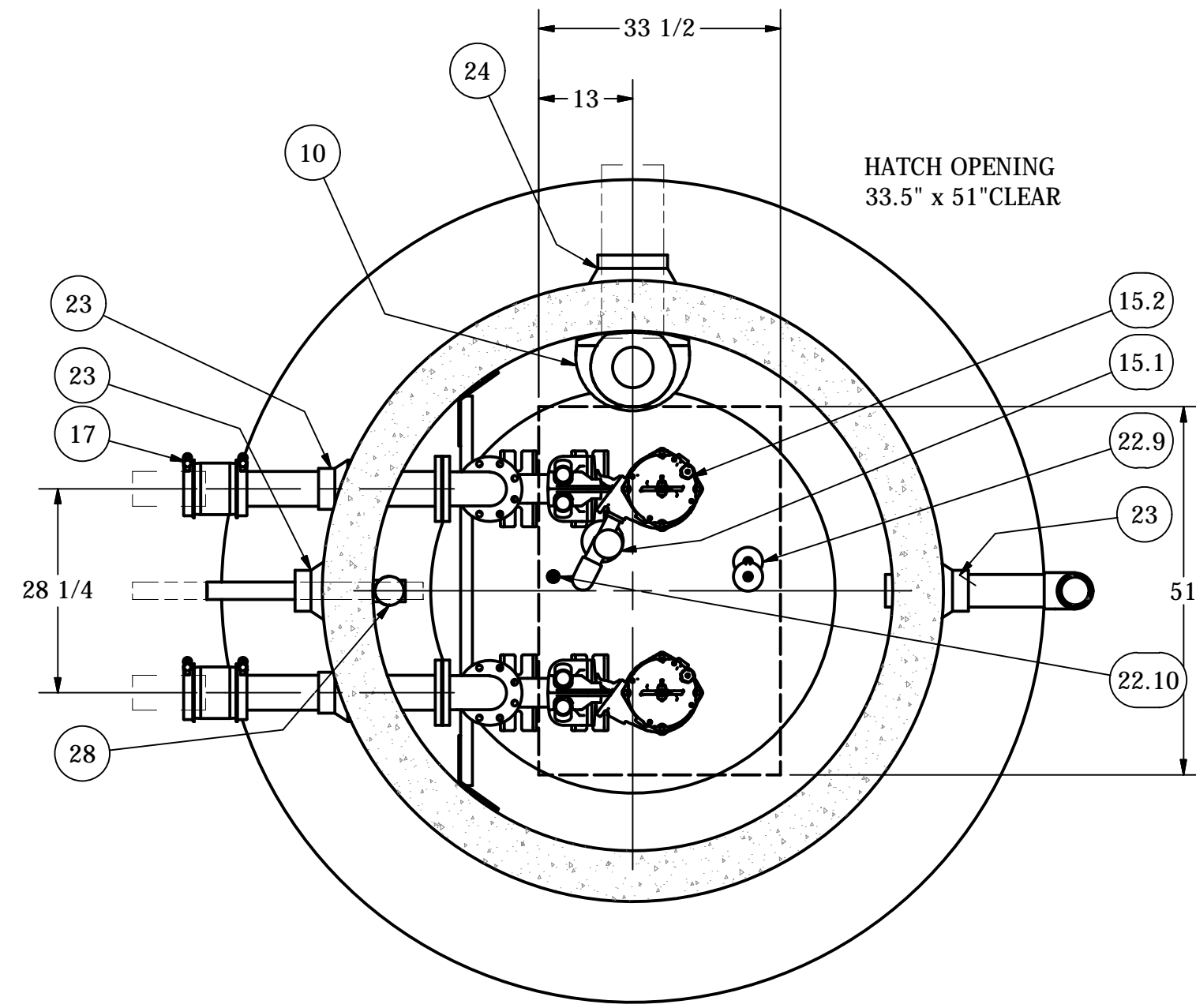


ISO VIEW
SCALE 1 / 30



SECTION B-B
SCALE 1 / 21

NOTE: WET WELL TOP SLAB IS PEDESTRIAN RATED

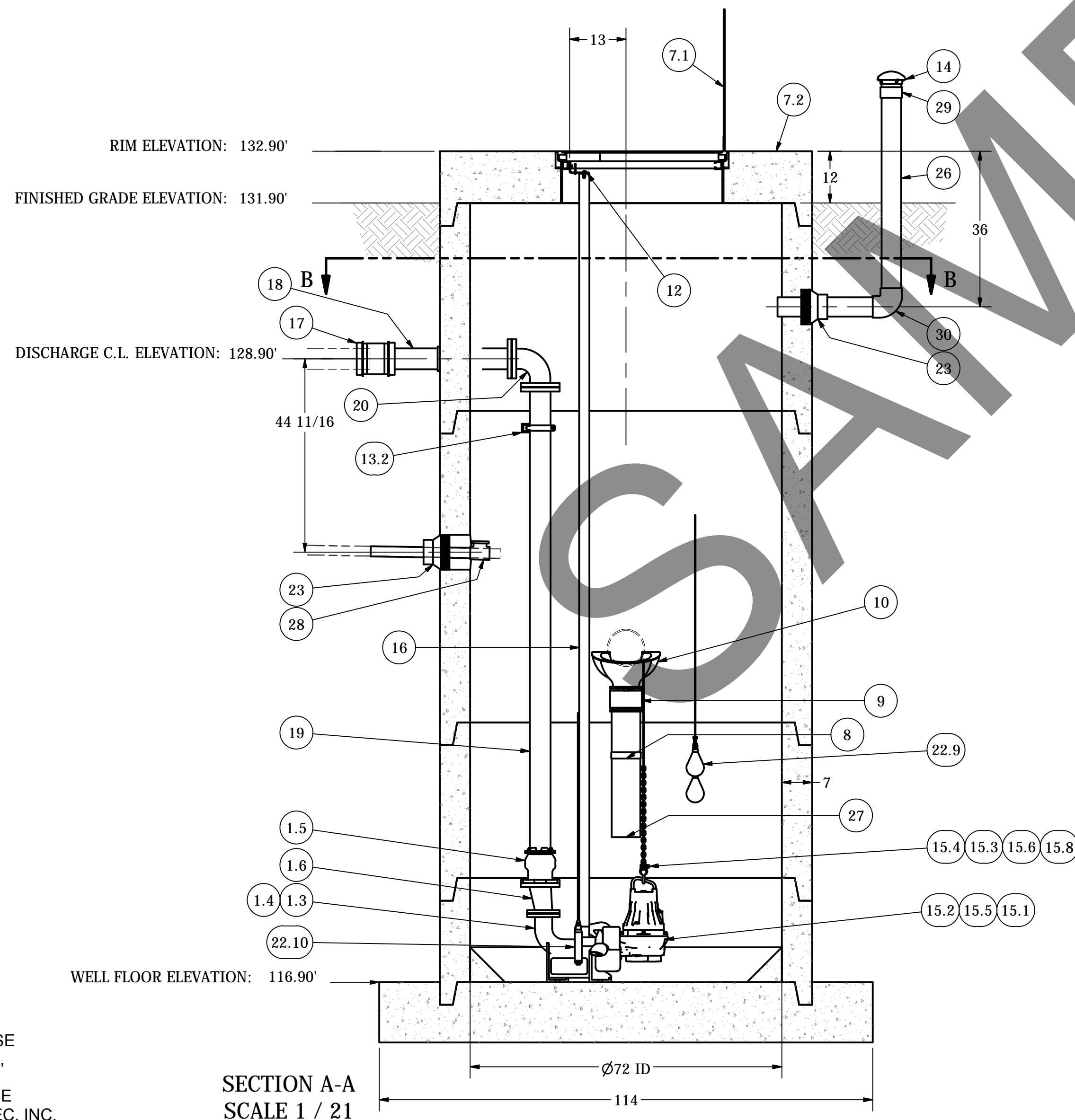
SENSOR AND ELEVATION TABLE		
LEVEL ELEVATION	DISTANCE BETWEEN POINTS	SET POINT DESCRIPTION
123.00'		INVERT IN
122.38'		BACK UP PUMPS START
		SENSOR SPACING
		BACK UP PUMPS STOP
		SENSOR SPACING
121.63'		BACK UP HL ALARM
121.38'		HIGH LEVEL ALARM
	0.50'	SENSOR SPACING
120.88'		LAG PUMP START
	0.50'	SENSOR SPACING
120.38'		LEAD PUMP START
	1.25'	SENSOR SPACING
119.13'		PUMP STOP
	2.23'	DISTANCE TO FLOOR
116.90'		FLOOR ELEVATION

6" DIAMETER WET WELL
4" DISCHARGE PIPING
FLYGT NP3085SH PUMPS
4" VALVES, 5106 VAULT

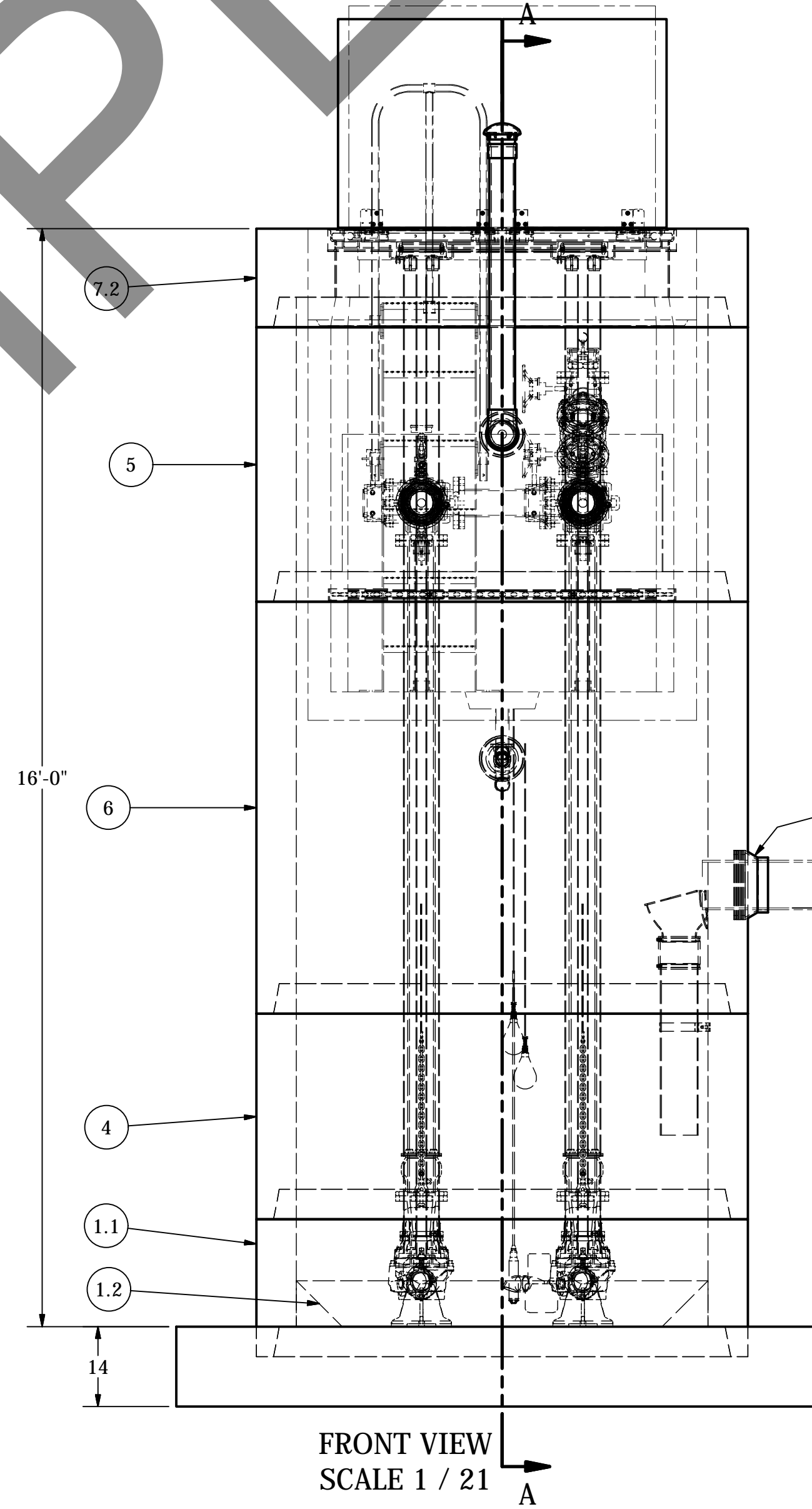
NOTE:
CONDUIT TO CONTROL PANEL (BY OTHERS)
MINIMUM:
(2) FOR POWER
(1) FOR LEVEL SENSING

ALL MATERIALS SHOWN ON THIS SHEET WILL BE SUPPLIED BY ROMTEC UTILITIES AND DELIVERED TO THE SITE AFTER THE HOLE HAS BEEN EXCAVATED AND SHORED. THE CONTRACTOR SHALL SUPPLY A CRANE OF SUFFICIENT SIZE TO LOWER ALL THE CONCRETE PIECES INTO THE HOLE SAFELY. THE CONTRACTOR SHALL INSTALL THE WET WELL (AND VALVE VAULT AND METERING VAULT IF APPLICABLE). ROMTEC UTILITIES WILL PROVIDE A REPRESENTATIVE FOR TECHNICAL ASSISTANCE ON THE DAY OF INSTALLATION TO ANSWER ANY QUESTIONS THAT MAY ARISE. THE CONTRACTOR IS RESPONSIBLE FOR ALL PLUMBING AND ELECTRICAL CONNECTIONS AND INSTALLATION. ITEMS NOTED AS "BY OTHERS" WILL BE PROVIDED AND INSTALLED BY THE CONTRACTOR. ROMTEC UTILITIES WILL NOT INSTALL ANY OF THE COMPONENTS SHOWN ON THIS PAGE.

© 2017 ROMTEC INC. ALL RIGHTS RESERVED. THESE PLANS AND DRAWINGS MAY NOT BE REPRODUCED, ADAPTED, OR FURTHER DISTRIBUTED, AND NO COMPONENTS MAY BE CONSTRUCTED FROM THESE PLANS, WITHOUT WRITTEN PERMISSION OF ROMTEC, INC.



SECTION A-A
SCALE 1 / 21



FRONT VIEW
SCALE 1 / 21

INVERT ELEVATION: 123.00'
INFLUENT SEWER (BY OTHERS)
8" PVC C900

ALL CONCRETE JOINTS
MUST BE GROUT SEALED BY
THE CONTRACTOR, NOT
ROMTEC UTILITIES

NOTE: ALL DIMENSIONS AND ELEVATIONS SHOWN ARE NOMINAL DIMENSIONS. IT IS THE RESPONSIBILITY OF THE ON-SITE CONTRACTOR OR ROMTEC UTILITIES CUSTOMER (NOT ROMTEC UTILITIES) TO VERIFY THE ACCURACY OF ANY CRITICAL DIMENSIONS OR ELEVATIONS PRIOR TO SETTING OR INSTALLING ANY EQUIPMENT.

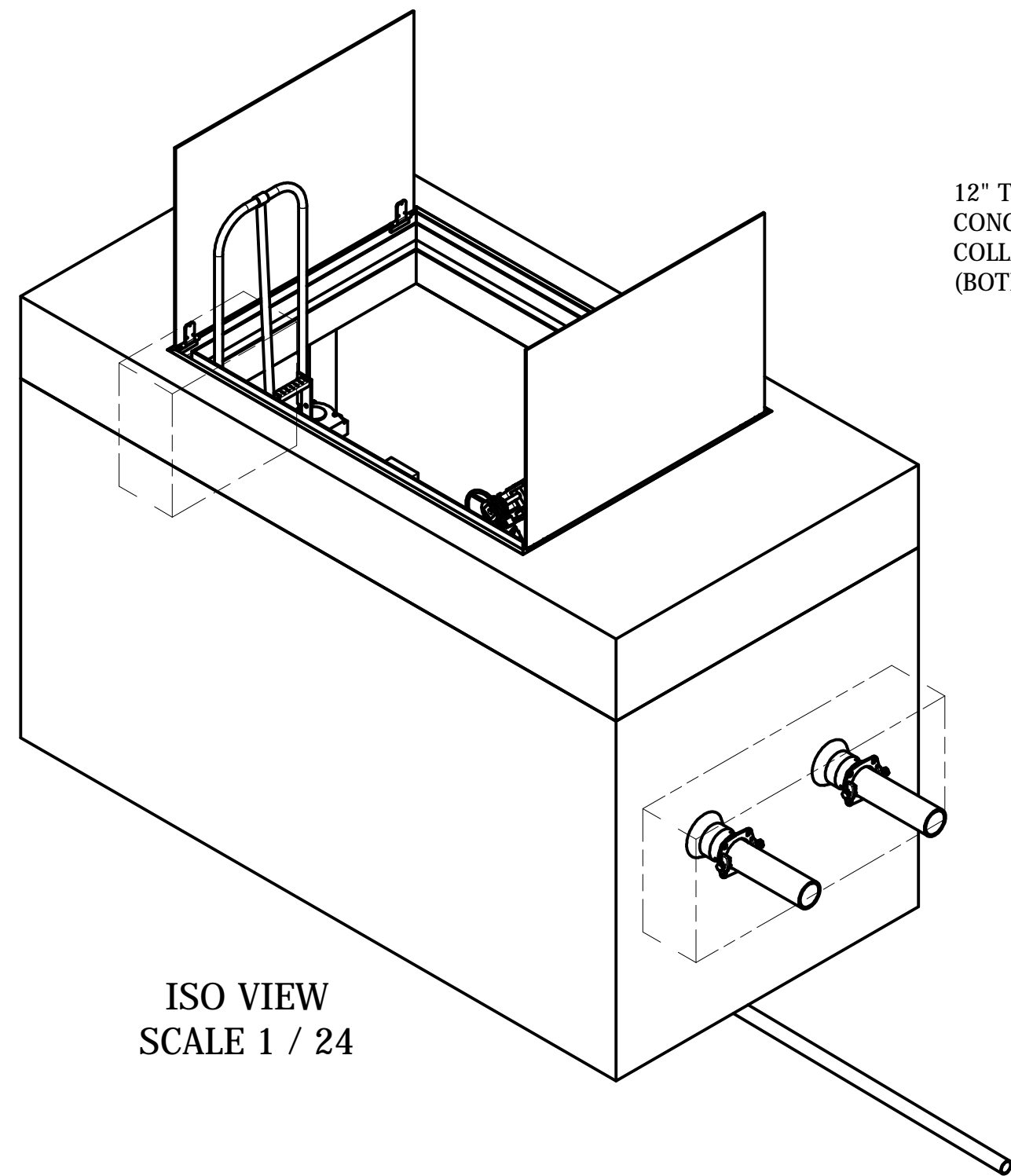
REVISION HISTORY			
REV	DESCRIPTION	DATE	APPROV
2	REVISED PER 12/12/17 MEETING COMMENTS	12-19-17	AD
1	REVISED PER NEW SITE ELEVATIONS	10-27-17	AD
0	ISSUED FOR PERMIT		

VERIFY SCALE
BARE IS ONE INCH ON ORIGINAL DRAWING
1" = 12'-0"
IF NOT ONE INCH ON SCALES ACCORDINGLY
DSW - KEVIN BOGAN
DRW - KEVIN BOGAN
CKD -
DATE - 9-7-17

ROMTEC UTILITIES
18240 NORTH BANK ROAD
ROSEBURG, OREGON 97470
(541) 496-9678
FAX (541) 496-0804

MINERAL POINT
WET WELL ASSEMBLY

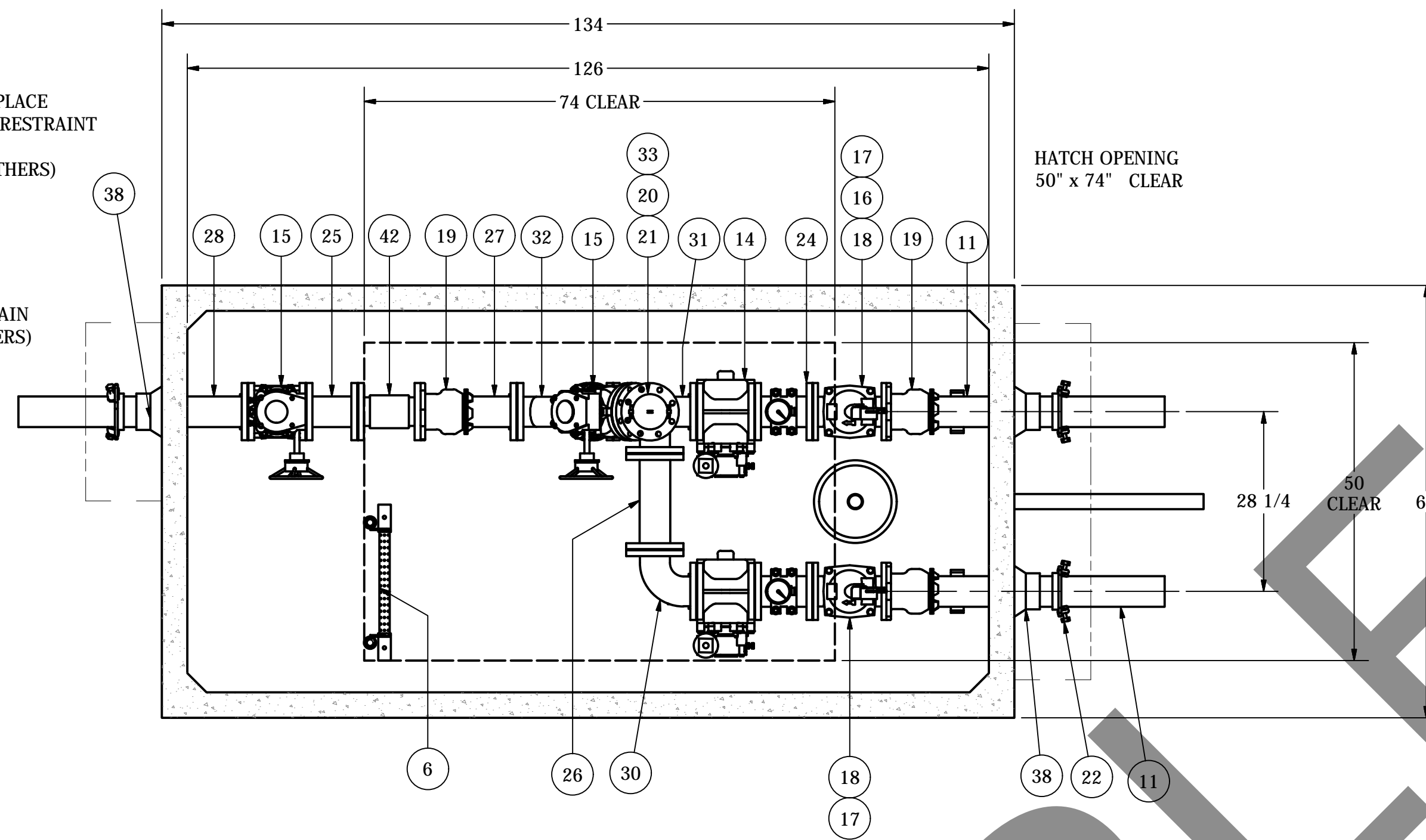
SHEET
1 OF 3
JOB NUMBER
RMTC
0000



ISO VIEW
SCALE 1 / 24

12" THICK CAST IN PLACE
CONCRETE THRUST RESTRAINT
COLLAR.
(BOTH ENDS - BY OTHERS)

FORCE MAIN
(BY OTHERS)

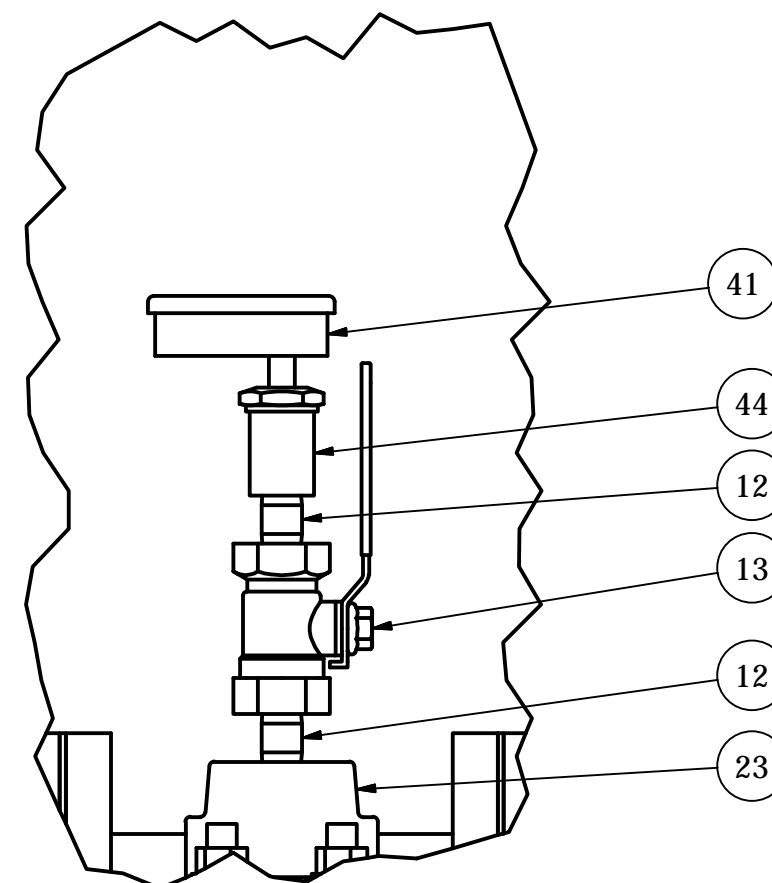


SECTION D-D
SCALE 1 / 18

HATCH OPENING
50" x 74" CLEAR

5106 VALVE VAULT
4" PIPING AND VALVES
W/ PIGGING PORT, GAUGES
FLOW METER

NOTE: VAULT TOP SLAB IS PEDESTRIAN RATED



DETAIL E
SCALE 1 / 4

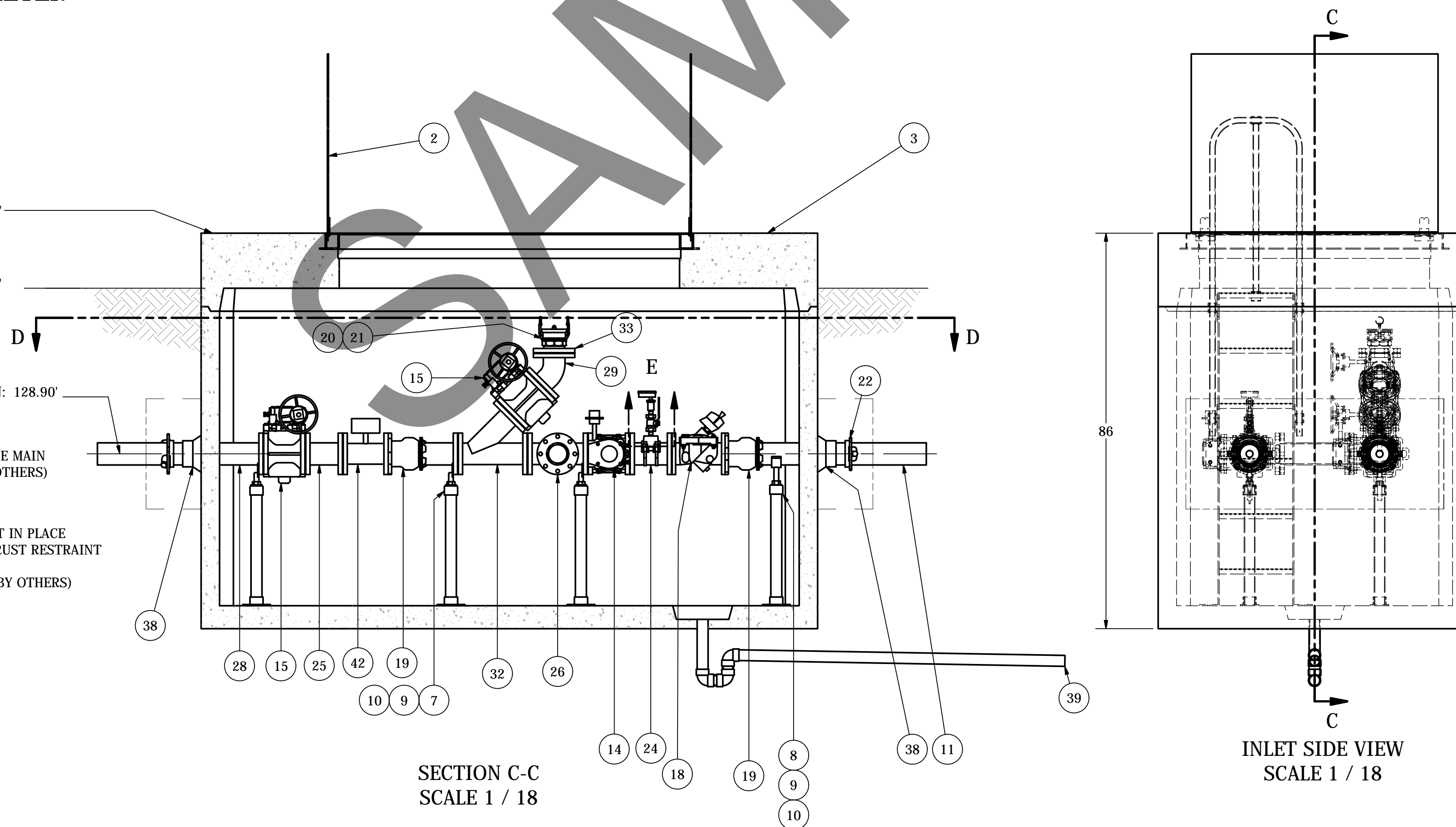
RIM ELEVATION: 132.90'

FINISHED GRADE ELEVATION: 131.90'

DISCHARGE C.L. ELEVATION: 128.90'

FORCE MAIN
(BY OTHERS)

12" THICK CAST IN PLACE
CONCRETE THRUST RESTRAINT
COLLAR.
(BOTH ENDS - BY OTHERS)



SECTION C-C
SCALE 1 / 18

INLET SIDE VIEW
SCALE 1 / 18

ALL CONCRETE JOINTS
MUST BE GROUT SEALED BY
THE CONTRACTOR, NOT
ROMTEC UTILITIES

ALL MATERIALS SHOWN ON THIS SHEET WILL BE SUPPLIED BY ROMTEC UTILITIES AND DELIVERED TO THE SITE AFTER THE HOLE HAS BEEN EXCAVATED AND SHORED. THE CONTRACTOR SHALL SUPPLY A CRANE OF SUFFICIENT SIZE TO LOWER ALL THE CONCRETE PIECES INTO THE HOLE SAFELY. THE CONTRACTOR SHALL INSTALL THE WET WELL (AND VALVE VAULT AND METERING VAULT IF APPLICABLE). ROMTEC UTILITIES WILL PROVIDE A REPRESENTATIVE FOR TECHNICAL ASSISTANCE ON THE DAY OF INSTALLATION TO ANSWER ANY QUESTIONS THAT MAY ARISE. THE CONTRACTOR IS RESPONSIBLE FOR ALL PLUMBING AND ELECTRICAL CONNECTIONS AND INSTALLATION. ITEMS NOTED AS "BY OTHERS" WILL BE PROVIDED AND INSTALLED BY THE CONTRACTOR. ROMTEC UTILITIES WILL NOT INSTALL ANY OF THE COMPONENTS SHOWN ON THIS PAGE.

© 2017 ROMTEC INC. ALL RIGHTS RESERVED. THESE PLANS AND DRAWINGS MAY NOT BE REPRODUCED, ADAPTED, OR FURTHER DISTRIBUTED, AND NO COMPONENTS MAY BE CONSTRUCTED FROM THESE PLANS, WITHOUT WRITTEN PERMISSION OF ROMTEC, INC.

VERIFY SCALE
BASE IS ONE INCH ON
ORIGINAL DRAWING
0 1"

DSV - KEVIN BOGAN
DRW - KEVIN BOGAN
CKD -
DATE - 9-7-17

COMPONENT
DRAWING

**ROMTEC
UTILITIES**
18240 NORTH BANK ROAD
ROSEBURG, OREGON 97470
(541) 496-9678
FAX (541) 496-0804

MINERAL POINT
VALVE VAULT ASSEMBLY

SHEET
2 OF 3

JOB NUMBER
RMTC
0000

REV	DESCRIPTION	DATE	APPROV
1	REVISED PER 12/12/17 MEETING COMMENTS	12/18/2017	AD
1	REVISED PER NEW SITE ELEVATIONS	10-27-17	AD

REVISION HISTORY

NOTE: ALL DIMENSIONS AND ELEVATIONS SHOWN ARE NOMINAL DIMENSIONS. IT IS THE RESPONSIBILITY OF THE ON-SITE CONTRACTOR OR ROMTEC UTILITIES CUSTOMER (NOT ROMTEC UTILITIES) TO VERIFY THE ACCURACY OF ANY CRITICAL DIMENSIONS OR ELEVATIONS PRIOR TO SETTING OR INSTALLING ANY EQUIPMENT.