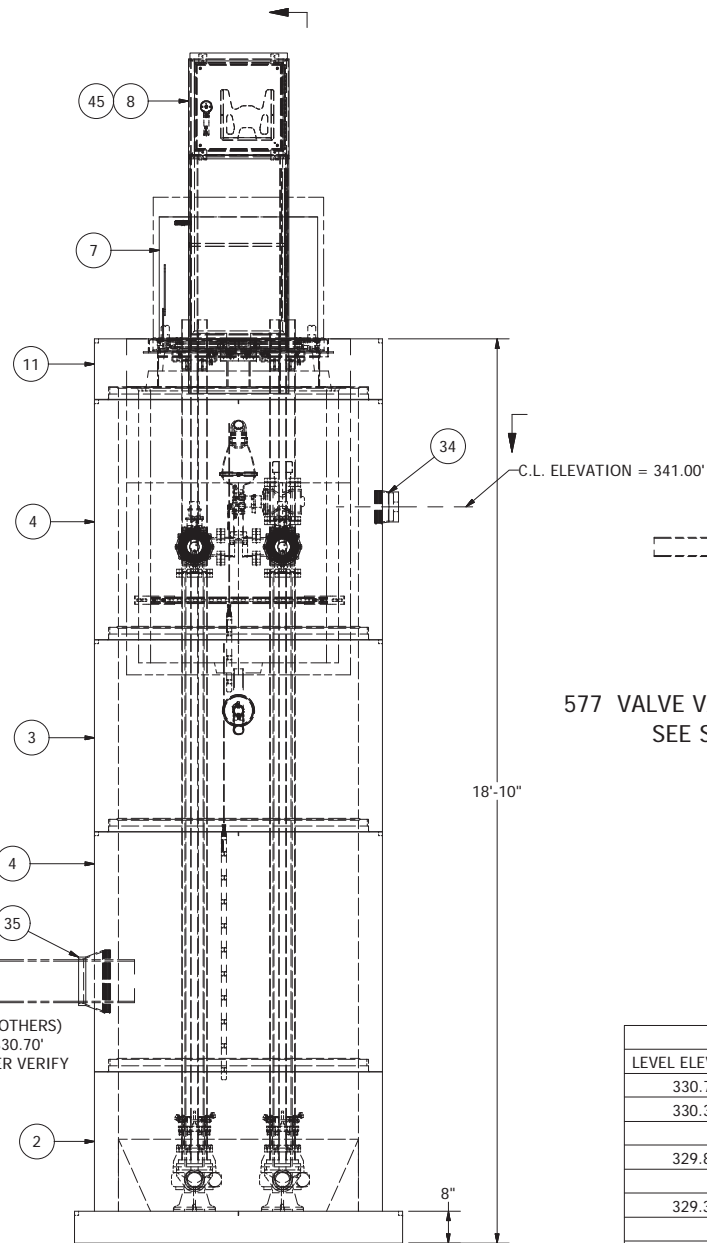
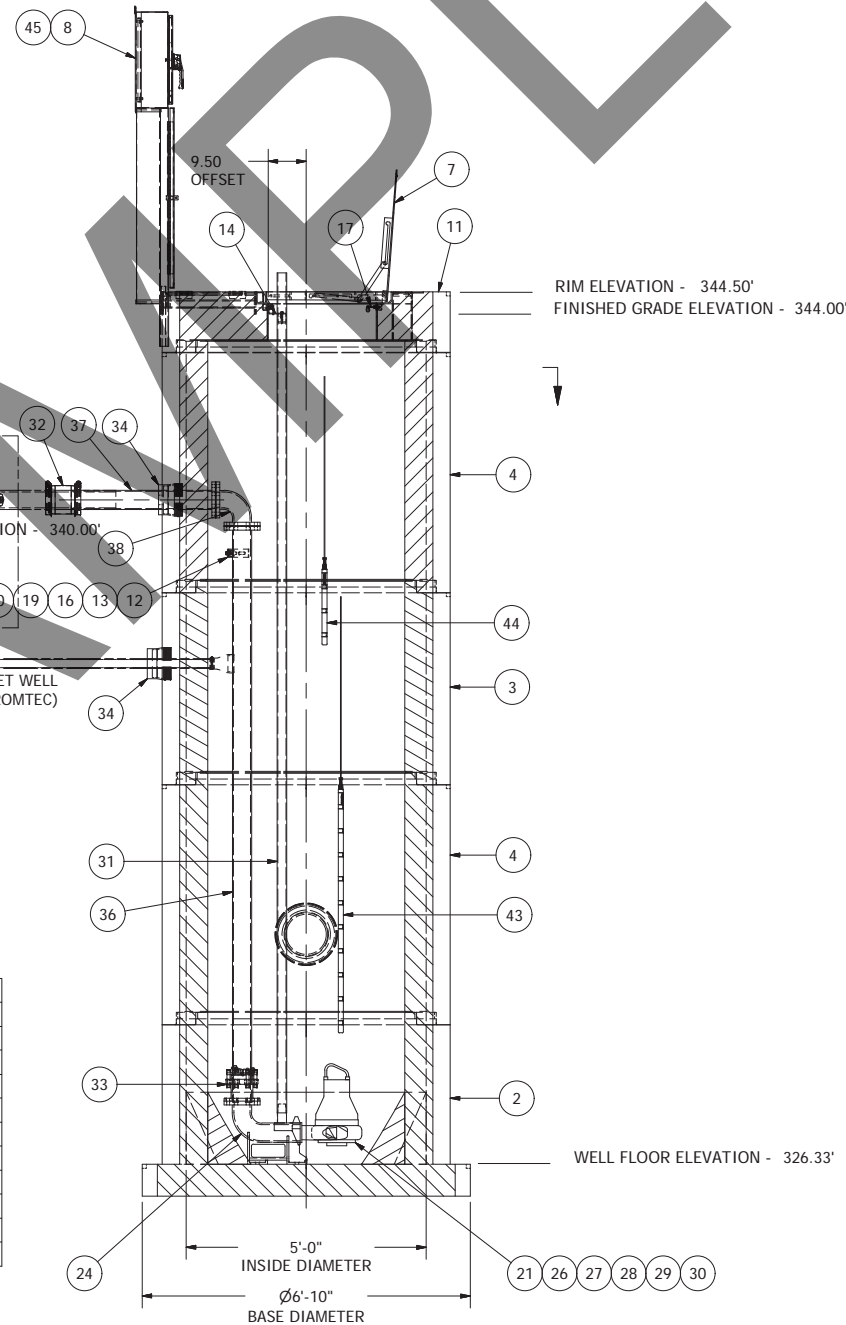


NOTE: WET WELL TOP SLAB IS PEDESTRIAN RATED



577 VALVE VAULT ASSEMBLY
SEE SHEET 2

SENSOR AND ELEVATION TABLE		
LEVEL ELEVATION	DISTANCE BETWEEN POINTS	SET POINT DESCRIPTION
330.70		SEWER INVERT IN
330.33		HIGH LEVEL ALARM
	0.50	SENSOR SPACING
329.83		LAG PUMP START
	0.50	SENSOR SPACING
329.33		LEAD PUMP START
	1.00	SENSOR SPACING
328.33		PUMP STOP
	2.00	DISTANCE TO FLOOR
326.33		FLOOR ELEVATION



NOTE: ALL DIMENSIONS AND ELEVATIONS SHOWN ARE NOMINAL DIMENSIONS. IT IS THE RESPONSIBILITY OF THE ON-SITE CONTRACTOR OR ROMTEC UTILITIES CUSTOMER (NOT ROMTEC UTILITIES) TO VERIFY THE ACCURACY OF ANY CRITICAL DIMENSIONS OR ELEVATIONS PRIOR TO SETTING OR INSTALLING ANY EQUIPMENT.

5' DIAMETER WET WELL 4" DISCHARGE PIPING NP3085 FLYGT PUMPS 4" - 577 VALVE VAULT

ALL MATERIALS SHOWN ON THIS SHEET WILL BE SUPPLIED BY ROMTEC UTILITIES AND DELIVERED TO THE SITE AFTER THE HOLE HAS BEEN EXCAVATED AND SHORED. THE CONTRACTOR SHALL SUPPLY A CRANE OF SUFFICIENT SIZE TO LOWER ALL THE CONCRETE PIECES INTO THE HOLE SAFELY. THE THE CONTRACTOR SHALL INSTALL THE WET WELL (AND VALVE VAULT AND METERING VAULT IF APPLICABLE). ROMTEC UTILITIES WILL PROVIDE A REPRESENTATIVE FOR TECHNICAL ASSISTANCE ON THE DAY OF INSTALLATION TO ANSWER ANY QUESTIONS THAT MAY ARISE. THE CONTRACTOR IS RESPONSIBLE FOR ALL PLUMBING AND ELECTRICAL CONNECTIONS AND INSTALLATION. ITEMS NOTED AS "BY OTHERS" WILL BE PROVIDED AND INSTALLED BY THE CONTRACTOR. ROMTEC UTILITIES WILL NOT INSTALL ANY OF THE COMPONENTS SHOWN ON THIS PAGE.

© 2010 ROMTEC INC. ALL RIGHTS RESERVED. THESE PLANS AND DRAWINGS MAY NOT BE REPRODUCED, ADAPTED, OR FURTHER DISTRIBUTED, AND NO COMPONENTS MAY BE CONSTRUCTED FROM THESE PLANS, WITHOUT WRITTEN PERMISSION OF ROMTEC, INC.

VERIFY SCALE
BAR IS ONE INCH ON
ORIGINAL DRAWING
0 1"

IF NOT ONE INCH ON
THIS SHEET, ADJUST
SCALES ACCORDINGLY

DSN - AM
DRN - AM
CKD -
DATE - 12/10/10

COMPONENT
DRAWING

**ROMTEC
UTILITIES**
18240 NORTH BANK ROAD
ROSEBURG, OREGON 97470
(541) 496-9678
FAX (541) 496-0804

CITY OF SHAFTER
KEVIN HARMON

NORTH PARK

4" - 5' DIA WET WELL

SHEET

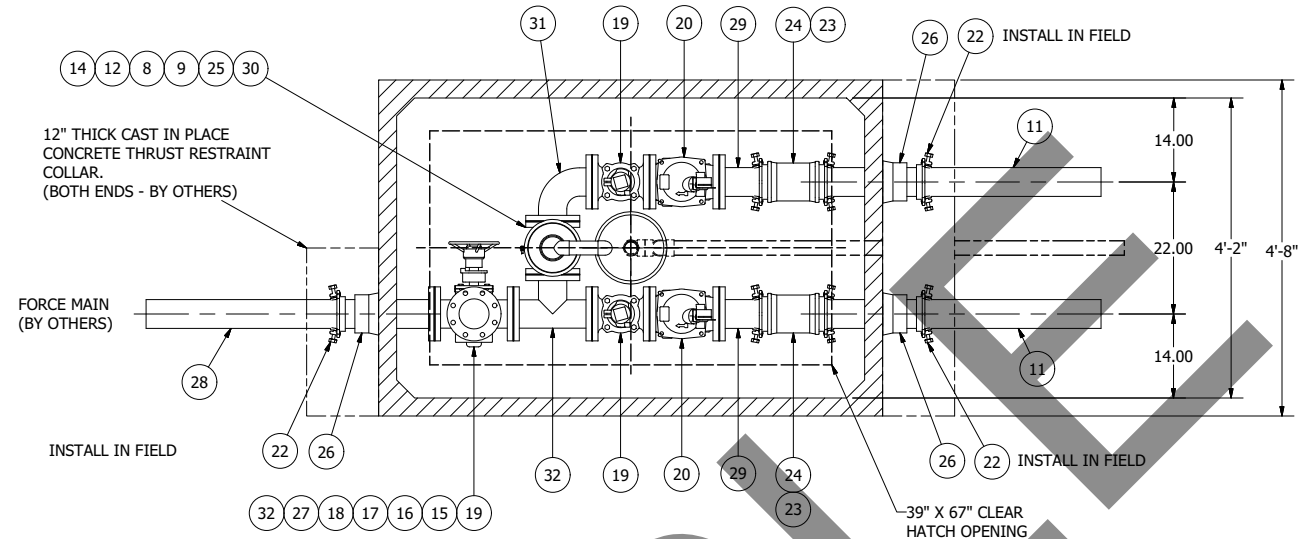
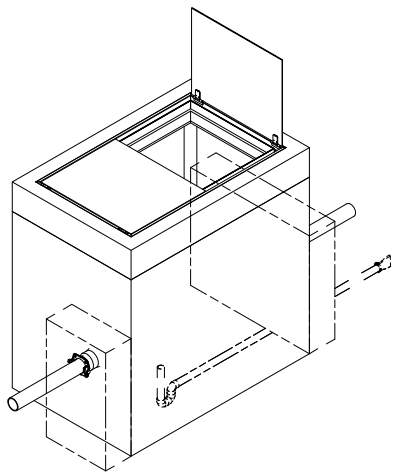
1 OF 2

JOB NUMBER

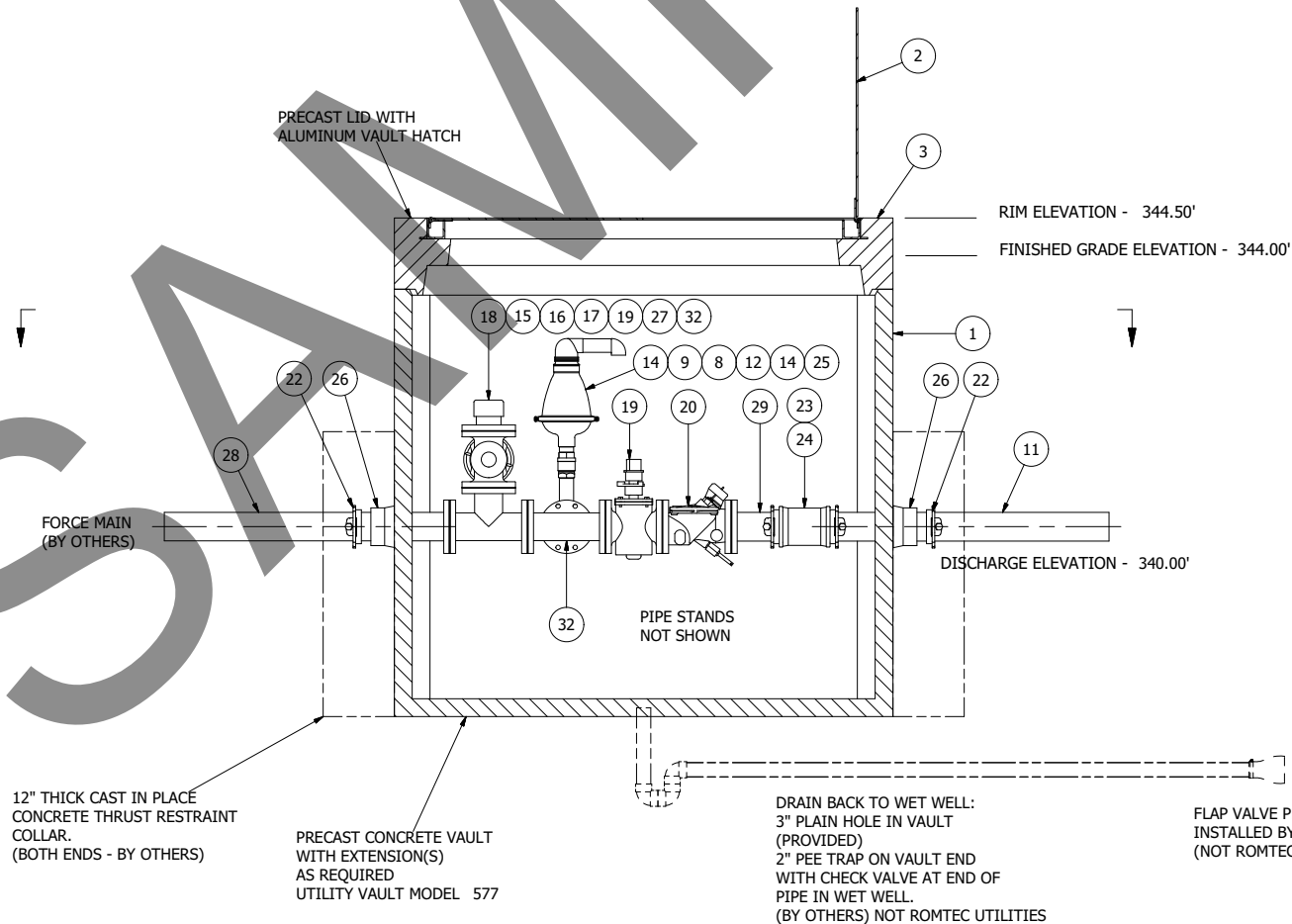
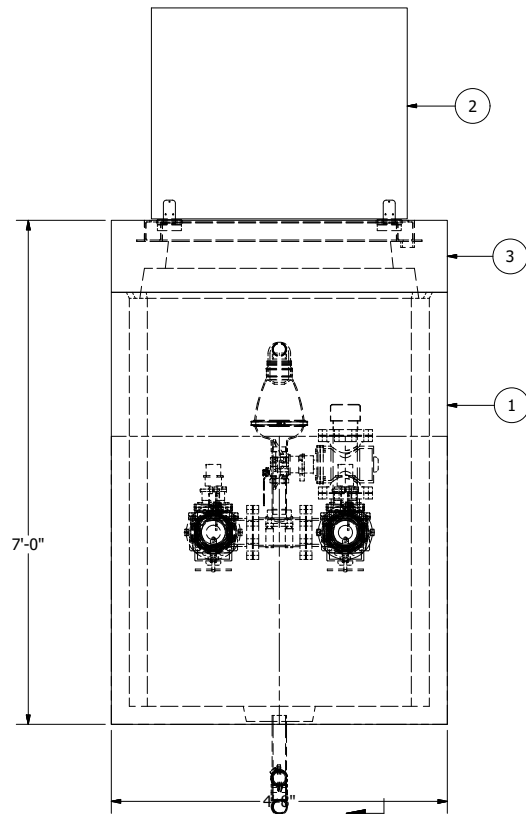
RMTC
0000

REV	DESCRIPTION	DATE	APPROV
4	CHANGES PER 3/24/11 LAUNCH DOCS	3/24/11	AD
3	CHANGES PER 2/14/11 COMMENTS	2/17/11	AD
2	UPDATED PER COMMENTS	01/20/11	AM
1	COMPONENT DRAWING	12/10/10	AM

REVISION HISTORY



NOTE: VAULT TOP SLAB IS PEDESTRIAN RATED



NOTE: ALL DIMENSIONS AND ELEVATIONS SHOWN ARE NOMINAL DIMENSIONS. IT IS THE RESPONSIBILITY OF THE ON-SITE CONTRACTOR OR ROMTEC UTILITIES CUSTOMER (NOT ROMTEC UTILITIES) TO VERIFY THE ACCURACY OF ANY CRITICAL DIMENSIONS OR ELEVATIONS PRIOR TO SETTING OR INSTALLING ANY EQUIPMENT.

577 VALVE VAULT
4" PIPING AND VALVES
WITH PUMPING PORT

VERIFY SCALE
BAR IS ONE INCH ON
ORIGINAL DRAWING

0 1"
IF NOT ONE INCH ON
THIS SHEET ADJUST
SCALES ACCORDINGLY

DSN - AM
DRN - AM
CKD -
DATE - 12/10/10

REV
DESCRIPTION

DATE

REVISION HISTORY

APPROV

DATE

APPROV

DATE

APPROV

DATE

APPROV

DATE

APPROV

DATE

APPROV

DATE

APPROV

DATE

APPROV

DATE

APPROV

DATE

APPROV

DATE

APPROV

DATE

APPROV

DATE

APPROV

DATE

APPROV

DATE

APPROV

DATE

APPROV

DATE

APPROV

DATE

APPROV

DATE

APPROV

DATE

APPROV

DATE