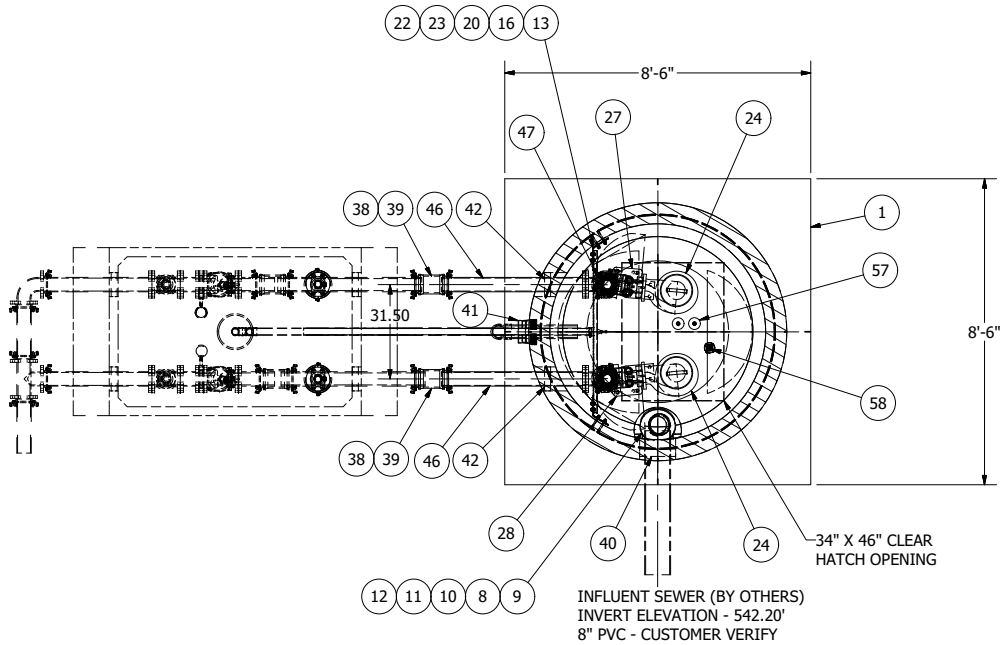
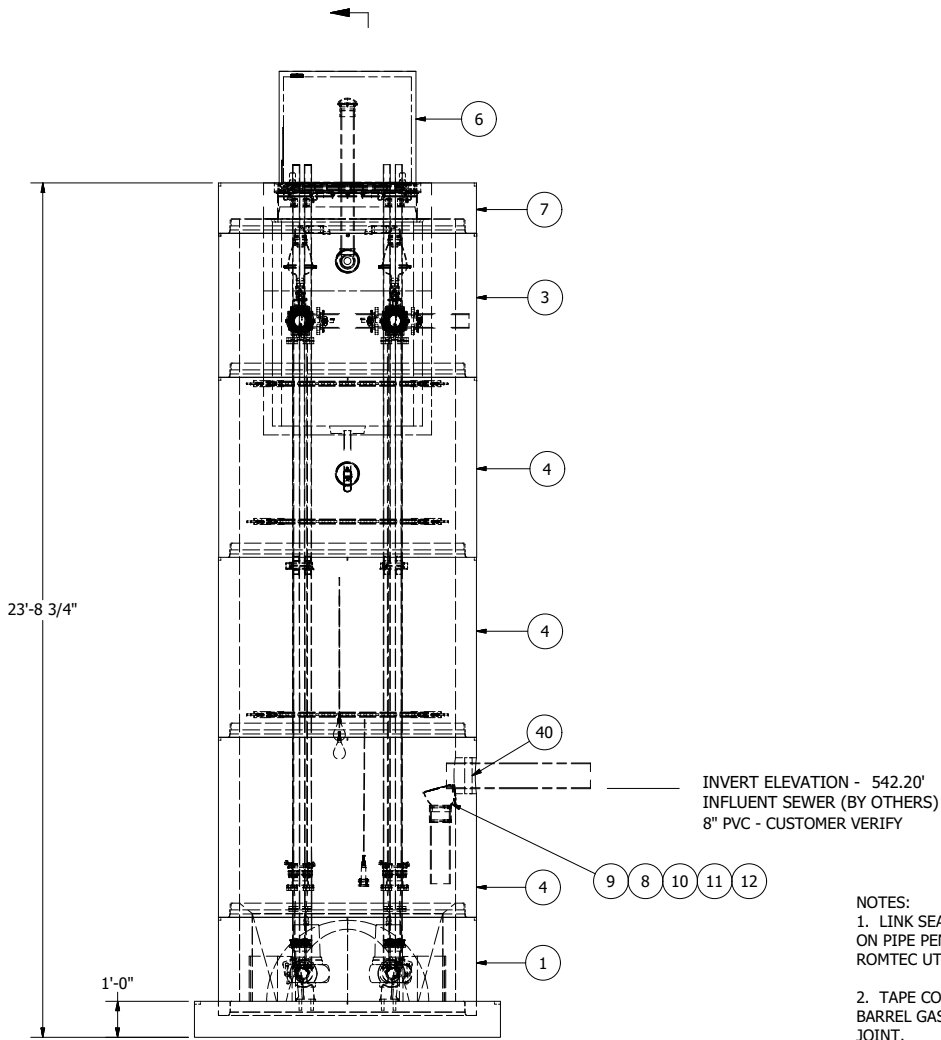


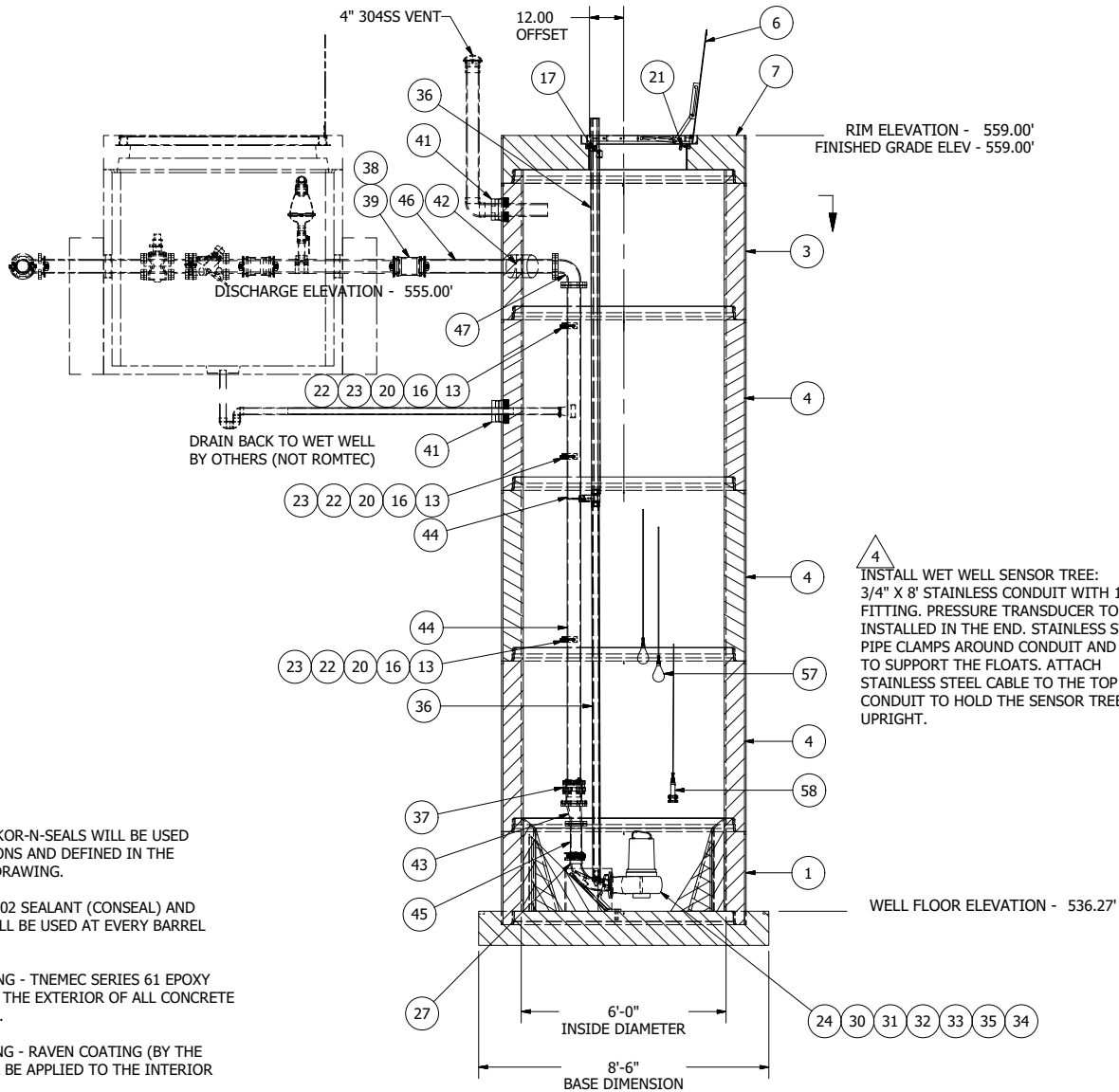
- NOTES:
1. LINK SEALS AND KOR-N-SEALS WILL BE USED ON PIPE PENETRATIONS AND DEFINED IN THE ROMTEC UTILITIES DRAWING.
 2. TAPE COAT & CS202 SEALANT (CONSEAL) AND BARREL GASKETS WILL BE USED AT EVERY BARREL JOINT.
 3. EXTERIOR COATING - TNE MEC SERIES 61 EPOXY WILL BE APPLIED TO THE EXTERIOR OF ALL CONCRETE PRIOR TO SHIPMENT.
 4. INTERIOR COATING - RAVEN COATING (BY THE CONTRACTOR) WILL BE APPLIED TO THE INTERIOR OF THE WET WELL.



NOTE: WET WELL TOP SLAB IS PEDESTRIAN RATED



- NOTES:
1. LINK SEALS AND KOR-N-SEALS WILL BE USED ON PIPE PENETRATIONS AND DEFINED IN THE ROMTEC UTILITIES DRAWING.
 2. TAPE COAT & CS202 SEALANT (CONSEAL) AND BARREL GASKETS WILL BE USED AT EVERY BARREL JOINT.
 3. EXTERIOR COATING - TNE MEC SERIES 61 EPOXY WILL BE APPLIED TO THE EXTERIOR OF ALL CONCRETE PRIOR TO SHIPMENT.
 4. INTERIOR COATING - RAVEN COATING (BY THE CONTRACTOR) WILL BE APPLIED TO THE INTERIOR OF THE WET WELL.



NOTE: ALL DIMENSIONS AND ELEVATIONS SHOWN ARE NOMINAL DIMENSIONS. IT IS THE RESPONSIBILITY OF THE ON-SITE CONTRACTOR OR ROMTEC UTILITIES CUSTOMER (NOT ROMTEC UTILITIES) TO VERIFY THE ACCURACY OF ANY CRITICAL DIMENSIONS OR ELEVATIONS PRIOR TO SETTING OR INSTALLING ANY EQUIPMENT.

ALL MATERIALS SHOWN ON THIS SHEET WILL BE SUPPLIED BY ROMTEC UTILITIES AND DELIVERED TO THE SITE AFTER THE HOLE HAS BEEN EXCAVATED AND SHORED. THE CONTRACTOR SHALL SUPPLY A CRANE OF SUFFICIENT SIZE TO LOWER ALL THE CONCRETE PIECES INTO THE HOLE SAFELY. THE CONTRACTOR SHALL INSTALL THE WET WELL (AND VALVE VAULT AND METERING VAULT IF APPLICABLE). ROMTEC UTILITIES WILL PROVIDE A REPRESENTATIVE FOR TECHNICAL ASSISTANCE ON THE DAY OF INSTALLATION TO ANSWER ANY QUESTIONS THAT MAY ARISE. THE CONTRACTOR IS RESPONSIBLE FOR ALL PLUMBING AND ELECTRICAL CONNECTIONS AND INSTALLATION. ITEMS NOTED AS "BY OTHERS" WILL BE PROVIDED AND INSTALLED BY THE CONTRACTOR. ROMTEC UTILITIES WILL NOT INSTALL ANY OF THE COMPONENTS SHOWN ON THIS PAGE.

VERIFY SCALE
BAR IS ONE INCH ON
ORIGINAL DRAWING
0 1"
IF NOT ONE INCH ON
THIS SHEET ADJUST
SCALE ACCURATELY

REV	DESCRIPTION	DATE	APPROV
1	COMPONENT DRAWING	01/26/11	AM
2	UPDATE PER 03/30/11 COMMENTS	04/18/11	AM
3	UPDATE PER LAUNCH MEETING	05/04/11	AD
4	ADDED WET WELL SENSOR TREE, CHANGED PT DESCRIPTION	8/02/11	AD

COMPONENT
DRAWING

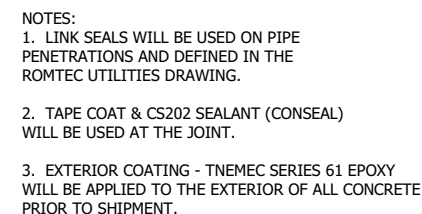
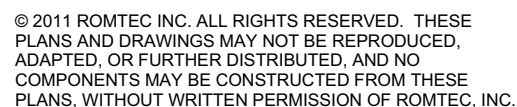
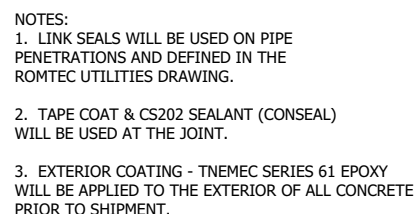
**ROMTEC
UTILITIES**
18240 NORTH BANK ROAD
ROSEBURG, OREGON 97470
(541) 496-9678
FAX (541) 496-0804

SHN ENGINEERS
STEVE DONOVAN

OAK CREEK
4" - 6' DIA WET WELL

SHEET
1 OF 3

JOB NUMBER
RMTC
0000



577 VALVE VAULT
4" PIPING AND VALVES
WITH (2) ARV

NOTE: ALL DIMENSIONS AND ELEVATIONS SHOWN ARE NOMINAL DIMENSIONS. IT IS THE RESPONSIBILITY OF THE ON-SITE CONTRACTOR OR ROMTEC UTILITIES CUSTOMER (NOT ROMTEC UTILITIES) TO VERIFY THE ACCURACY OF ANY CRITICAL DIMENSIONS OR ELEVATIONS PRIOR TO SETTING OR INSTALLING ANY EQUIPMENT.

VERIFY SCALE
BAR IS ONE INCH ON
ORIGINAL DRAWING

COMPONENT DRAWING

ROMTEC
UTILITIES
18240 NORTH BANK ROAD
ROSEBURG, OREGON 97470
(541) 496-9678
FAX (541) 496-0804

SHN ENGINEERS
STEVE DONOVAN

OAK CREEK
4" - 577 VALVE VA

SHEET
2 OF 3

JOB NUMBER
RMTC
0000

3	UPDATE PER LAUNCH MEETING	05/04/11	AD
2	UPDATE PER 03/30/11 COMMENTS	04/18/11	AM
1	COMPONENT DRAWING	01/26/11	AM
REV	DESCRIPTION	DATE	APPROV
REVISION HISTORY			
DATE - 01/26/11			