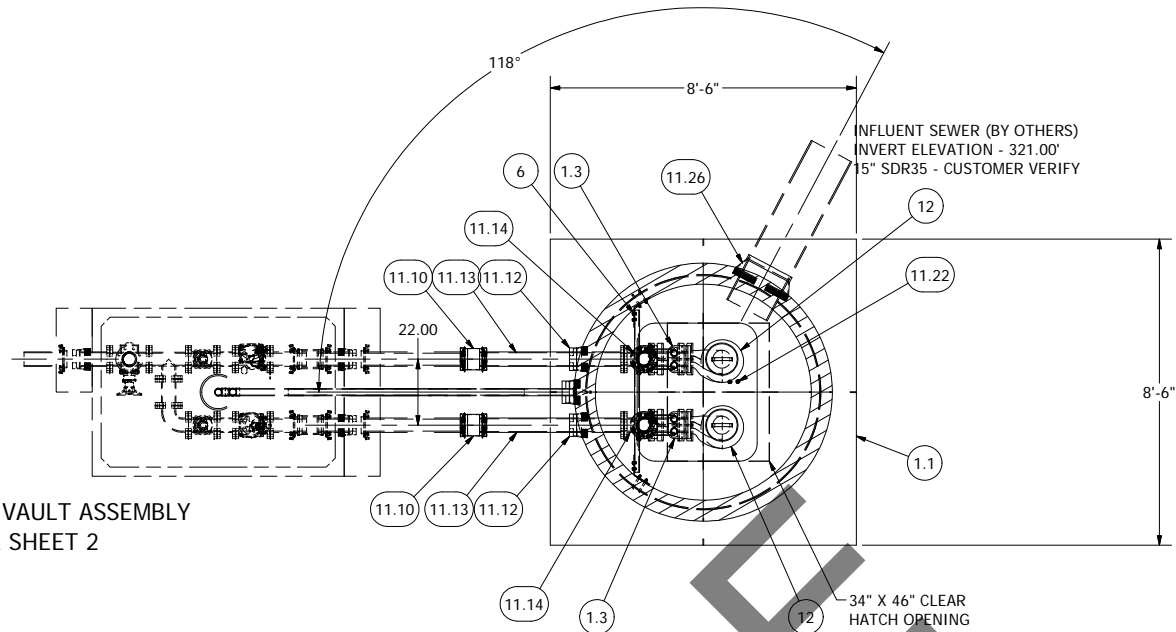
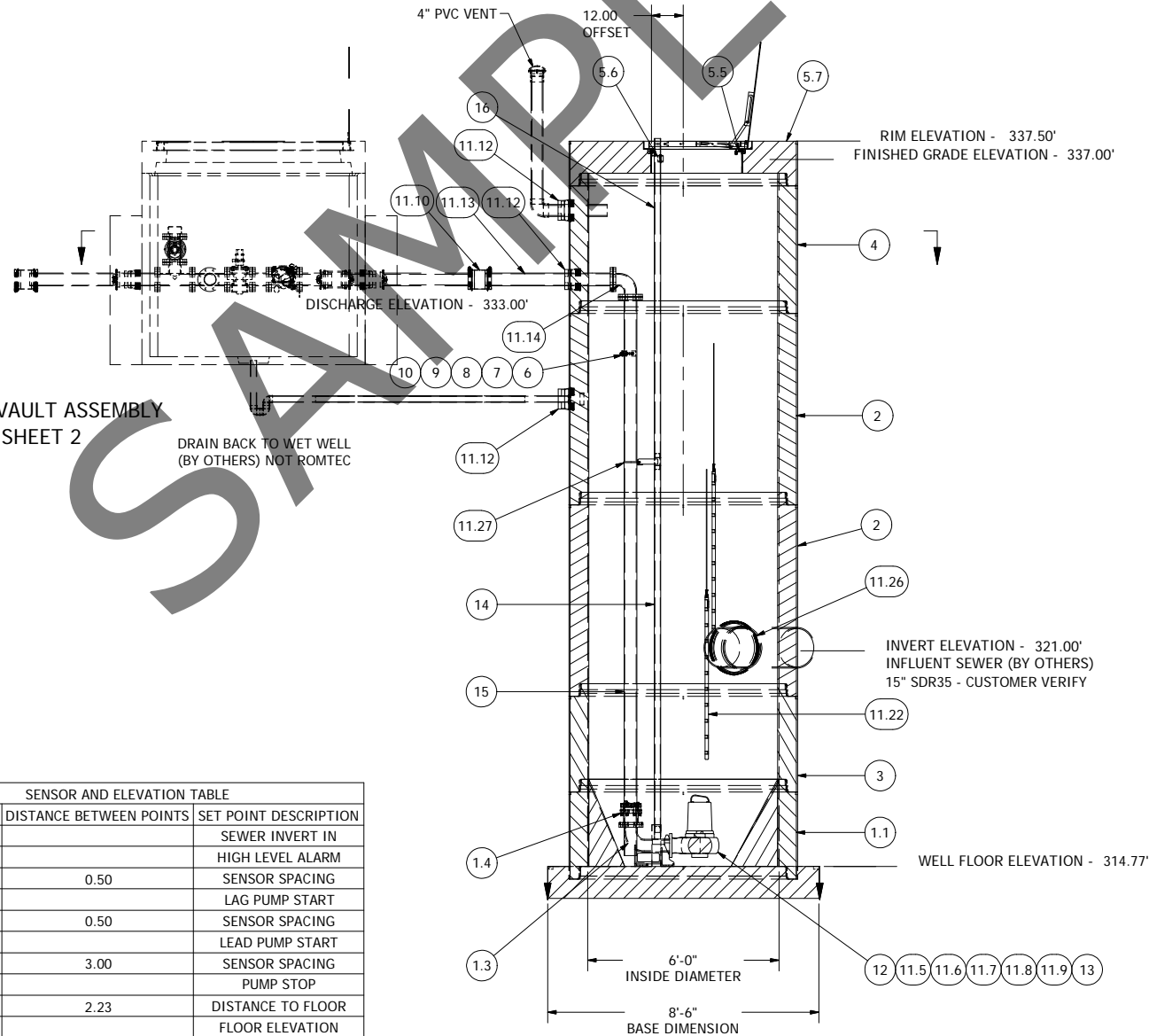


577 VALVE VAULT ASSEMBLY  
SEE SHEET 2



NOTE: WET WELL TOP SLAB IS PEDESTRIAN RATED

577 VALVE VAULT ASSEMBLY  
SEE SHEET 2



INFLUENT SEWER (BY OTHERS)  
INVERT ELEVATION - 321.50'  
15" SDR35 - CUSTOMER VERIFY

SENSOR AND ELEVATION TABLE		
LEVEL ELEVATION	DISTANCE BETWEEN POINTS	SET POINT DESCRIPTION
321.00		SEWER INVERT IN
321.00		HIGH LEVEL ALARM
	0.50	SENSOR SPACING
320.50		LAG PUMP START
	0.50	SENSOR SPACING
320.00		LEAD PUMP START
	3.00	SENSOR SPACING
317.00		PUMP STOP
	2.23	DISTANCE TO FLOOR
314.77		FLOOR ELEVATION

NOTE: ALL DIMENSIONS AND ELEVATIONS SHOWN ARE NOMINAL DIMENSIONS. IT IS THE RESPONSIBILITY OF THE ON-SITE CONTRACTOR OR ROMTEC UTILITIES CUSTOMER (NOT ROMTEC UTILITIES) TO VERIFY THE ACCURACY OF ANY CRITICAL DIMENSIONS OR ELEVATIONS PRIOR TO SETTING OR INSTALLING ANY EQUIPMENT.

6' DIAMETER WET WELL  
4" DISCHARGE PIPING  
NP3102 FLYGT PUMPS  
4" - 577 VALVE VAULT

ALL MATERIALS SHOWN ON THIS SHEET WILL BE SUPPLIED BY ROMTEC UTILITIES AND DELIVERED TO THE SITE AFTER THE HOLE HAS BEEN EXCAVATED AND SHORED. THE CONTRACTOR SHALL SUPPLY A CRANE OF SUFFICIENT SIZE TO LOWER ALL THE CONCRETE PIECES INTO THE HOLE SAFELY. THE THE CONTRACTOR SHALL INSTALL THE WET WELL (AND VALVE VAULT AND METERING VAULT IF APPLICABLE). ROMTEC UTILITIES WILL PROVIDE A REPRESENTATIVE FOR TECHNICAL ASSISTANCE ON THE DAY OF INSTALLATION TO ANSWER ANY QUESTIONS THAT MAY ARISE. THE CONTRACTOR IS RESPONSIBLE FOR ALL PLUMBING AND ELECTRICAL CONNECTIONS AND INSTALLATION. ITEMS NOTED AS "BY OTHERS" WILL BE PROVIDED AND INSTALLED BY THE CONTRACTOR. ROMTEC UTILITIES WILL NOT INSTALL ANY OF THE COMPONENTS SHOWN ON THIS PAGE.

DRAWING GEOMETRY  
CREATED AT 1:1 AND  
FIT TO THE SHEET  
DO NOT SCALE  
THIS DRAWING

DSN - AM  
DRN - AM  
CKD -  
DATE - 05/10/11

3 UPDATED PER 07/20/11 COMMENTS 08/01/11 AM  
2 ADDED MIXED FLUSH VALVE 05/16/11 AM  
1 COMPONENT DRAWING 05/10/11 AM  
REV DESCRIPTION DATE APPROV

COMPONENT  
DRAWING

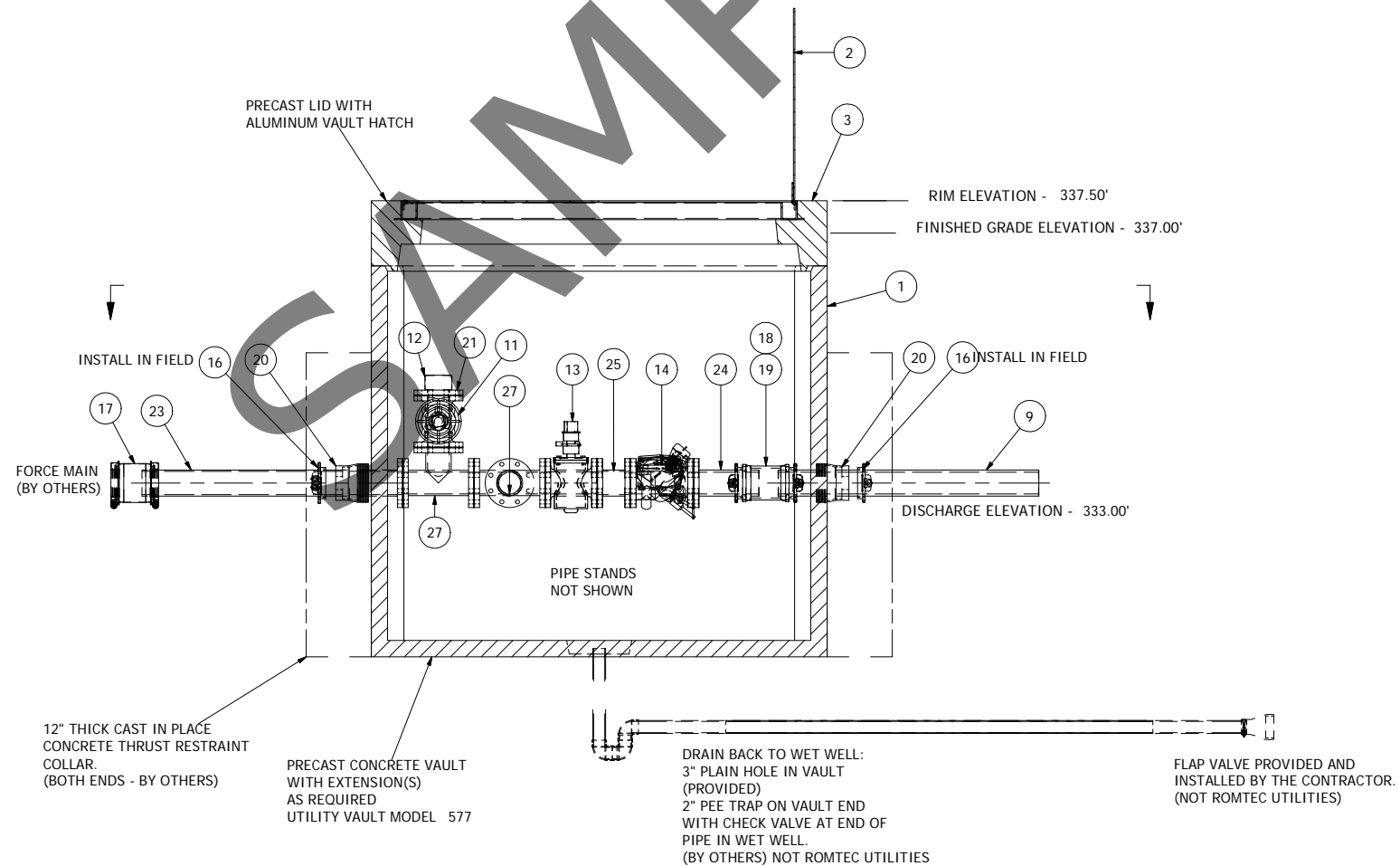
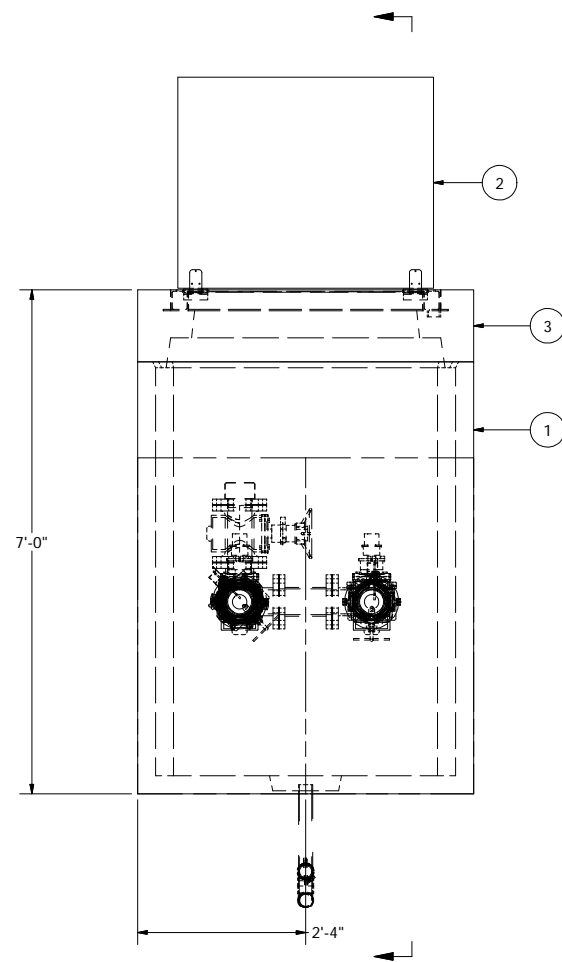
ROMTEC  
UTILITIES  
18240 NORTH BANK ROAD  
ROSEBURG, OREGON 97470  
(541) 496-9678  
FAX (541) 496-0804

CITY OF SHAFTER  
KEVIN HARMON

RODRIGUEZ PARK  
4" - 6' DIA WET WELL

SHEET  
1 OF 2

JOB NUMBER  
RMTC  
0000



NOTE: ALL DIMENSIONS AND ELEVATIONS SHOWN ARE NOMINAL DIMENSIONS. IT IS THE RESPONSIBILITY OF THE ON-SITE CONTRACTOR OR ROMTEC UTILITIES CUSTOMER (NOT ROMTEC UTILITIES) TO VERIFY THE ACCURACY OF ANY CRITICAL DIMENSIONS OR ELEVATIONS PRIOR TO SETTING OR INSTALLING ANY EQUIPMENT.

© 2011 ROMTEC INC. ALL RIGHTS RESERVED. THESE PLANS AND DRAWINGS MAY NOT BE REPRODUCED, ADAPTED, OR FURTHER DISTRIBUTED, AND NO COMPONENTS MAY BE CONSTRUCTED FROM THESE PLANS, WITHOUT WRITTEN PERMISSION OF ROMTEC, INC.

DO NOT SCALE  
THIS DRAWING

**ROMIEC UTILITIES**  
18240 NORTH BANK ROAD  
ROSEBURG, OREGON 97470  
(541) 496-9678  
FAX (541) 496-0804

OF 2

3 NUMBER  
MTC  
0000