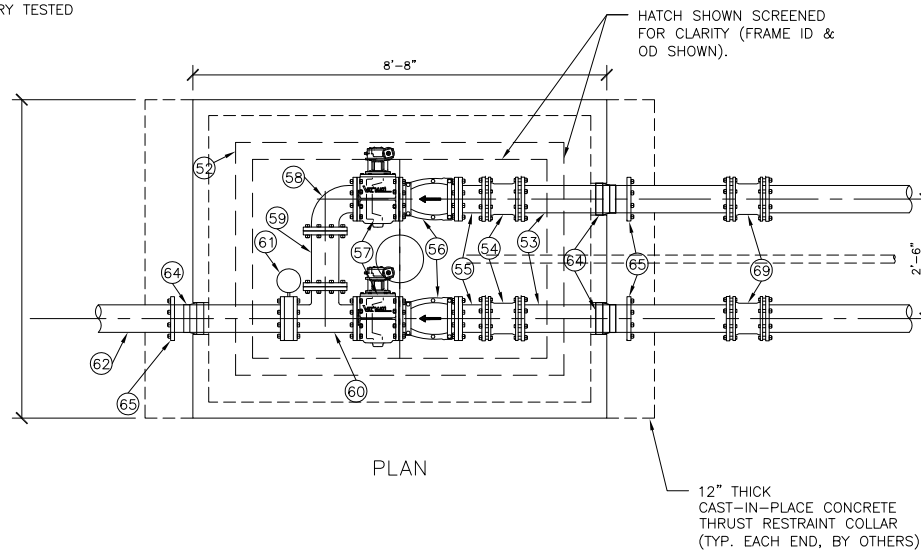
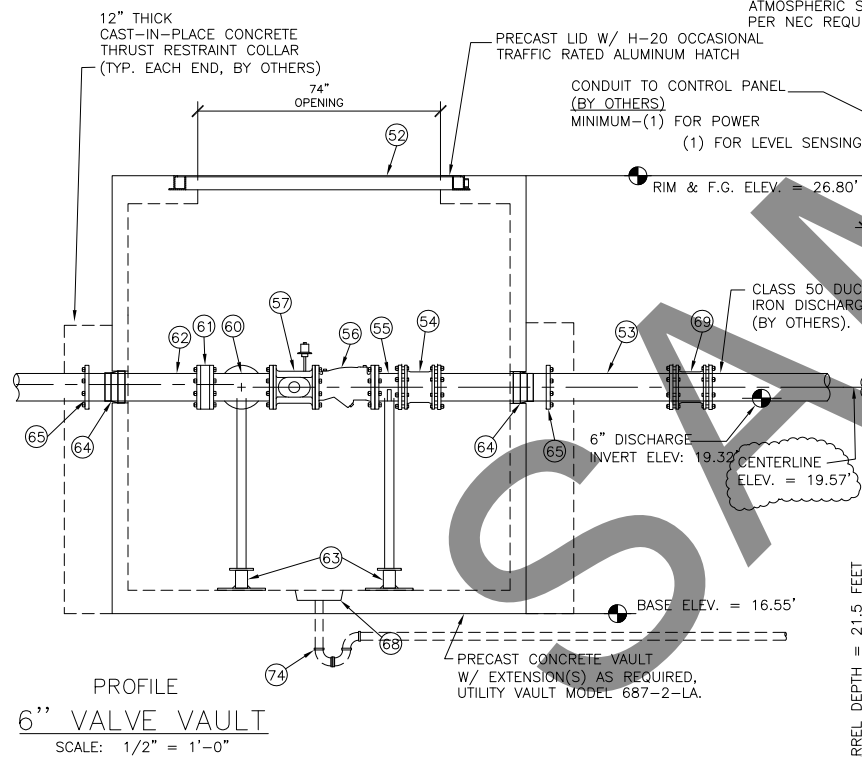


- VAULT DESIGN NOTES:
1. ALL PIPING & VALVES WITHIN VAULT ARE 6 INCH DIAMETER.
 2. HATCH DESIGN LOADS: H-20 OCCASIONAL TRAFFIC RATED.
 3. VALVES AND VAULT PIPING SYSTEM FACTORY TESTED TO 100 PSI AFTER ASSEMBLY.
 4. FBEC= FUSION BONDED EPOXY COATED

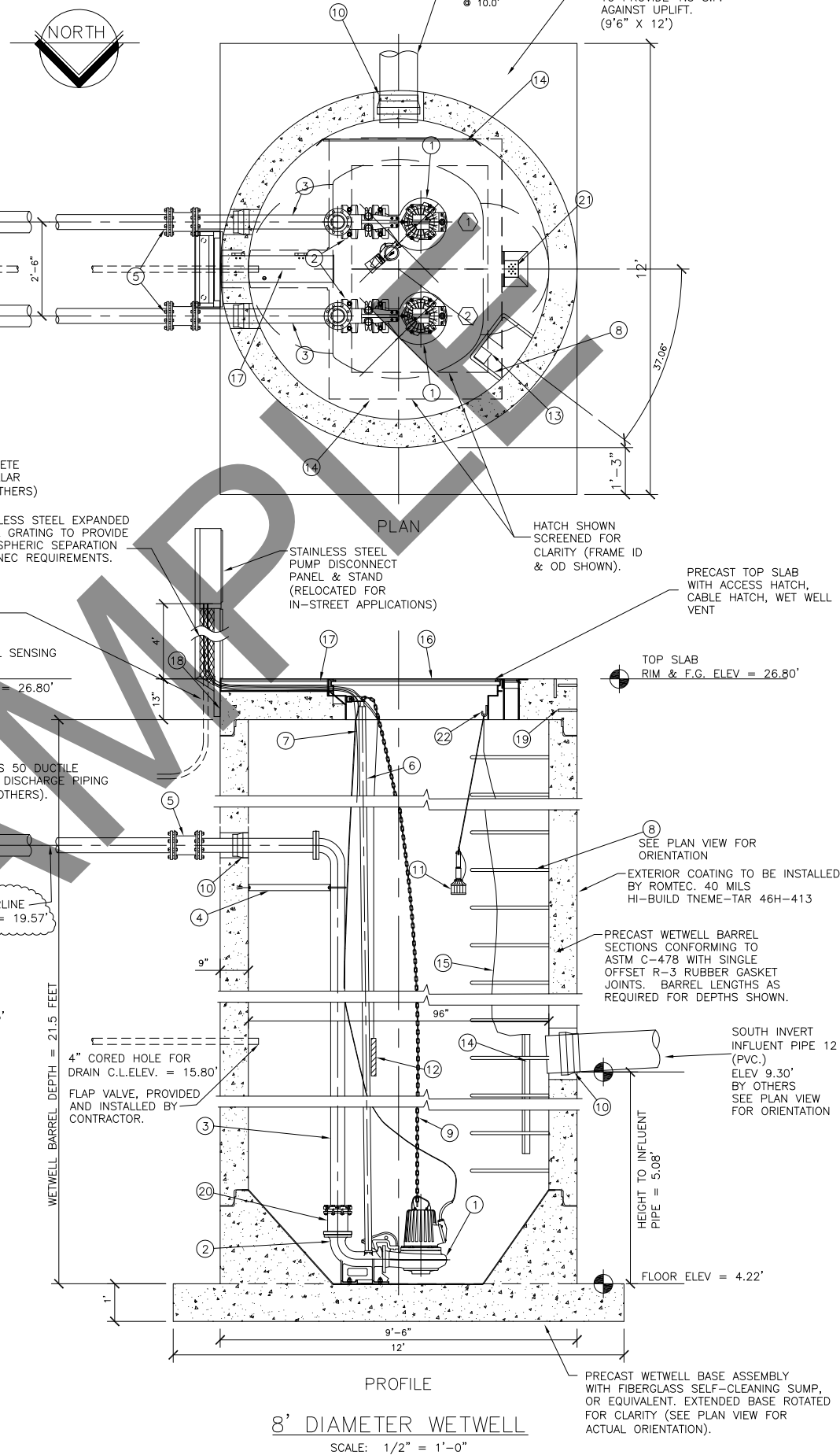


NOTE: VAULT TOP SLAB IS H-20 OCCASIONAL TRAFFIC RATED.



LEVEL ELEVATION	DISTANCE-BETWEEN-POINTS	SET POINT DESCRIPTION
9.30'		SOUTH SEWER INVERT IN
9.72'		HIGH LEVEL ALARM
9.22'		LAG PUMP START
8.72'		LEAD PUMP START
7.22'		LAG PUMP STOP
6.72'		LEAD PUMP STOP
6.22'		LOW LEVEL ALARM
	2.50'	DISTANCE FROM STOP TO FLOOR
4.22'		FLOOR ELEVATION

NOTE: WET WELL TOP SLAB IS H-20 OCCASIONAL TRAFFIC RATED.



NOTE:
ALL MATERIALS SHOWN ON THIS SHEET WILL BE SUPPLIED BY ROMTEC UTILITIES AND DELIVERED TO THE SITE AFTER THE HOLE HAS BEEN EXCAVATED AND SHORED. THE CONTRACTOR WILL SUPPLY A CRANE OF SUFFICIENT SIZE TO LOWER ALL THE CONCRETE PIECES INTO THE HOLE SAFELY. THE CONTRACTOR WILL INSTALL THE WET WELL, VALVE VAULT AND METERING VAULT. ROMTEC UTILITIES WILL PROVIDE A REPRESENTATIVE FOR TECHNICAL ASSISTANCE ON THE DAY OF INSTALLATION TO ANSWER ANY QUESTIONS THAT MAY ARISE. THE CONTRACTOR IS RESPONSIBLE FOR ALL PLUMBING AND ELECTRICAL CONNECTIONS AND INSTALLATION. ITEMS NOTED AS "(BY OTHERS)" WILL BE PROVIDED AND INSTALLED BY THE CONTRACTOR. ROMTEC UTILITIES WILL NOT INSTALL ANY OF THE COMPONENTS SHOWN ON THIS PAGE.

PUMP DESIGNATIONS

UPON SUCCESSFUL INSTALLATION OF THE WET WELL, THE CONTRACTOR SHALL HAVE THE INTERIOR COATED WITH 5 MILS D.F.T. OF RAVEN A-10 PRIMER AND 80 - 100 MILS OF RAVEN 405 D.F.T. THE CONTRACTOR SHALL PROVIDE WRITTEN PROOF OF THE WET WELL CASTING DATE TO VERIFY THAT THE CONCRETE HAS CURED ADEQUATELY TO SAFELY APPLY THE COATINGS. (THIS ITEM IS NOT SUPPLIED BY ROMTEC UTILITIES, IT IS CONTRACTOR SUPPLIED AND INSTALLED)

9	6-9-14	UPDATED TO ACTUAL ELEVATIONS	AD
8	4-30-08	REVISED PER 4/17/08 COMMENTS	AD
7	12-6-06	MOVED 8"x6" REDUCER TO METER VAULT	AD
6	10-18-06	UPDATED STEP INFORMATION	AD
5	10-6-06	1" RIM ELEVATION CHANGE	AD
4	10-5-06	CHANGED TO 12" INLET	KB
3	9-26-06	CHANGED TO H-20, CHANGED ELEV.	AD
2	9-15-06	QUOTE - FULL TRAFFIC, WELL DEPTH	KB
1	9-8-06	QUOTE DRAWING	AD
		NO. DATE DESCRIPTION	BY
		REVISIONS	

VERIFY SCALE
BAR IS ONE INCH ON ORIGINAL DRAWING
IF NOT ONE INCH ON SCALES ACCORDINGLY

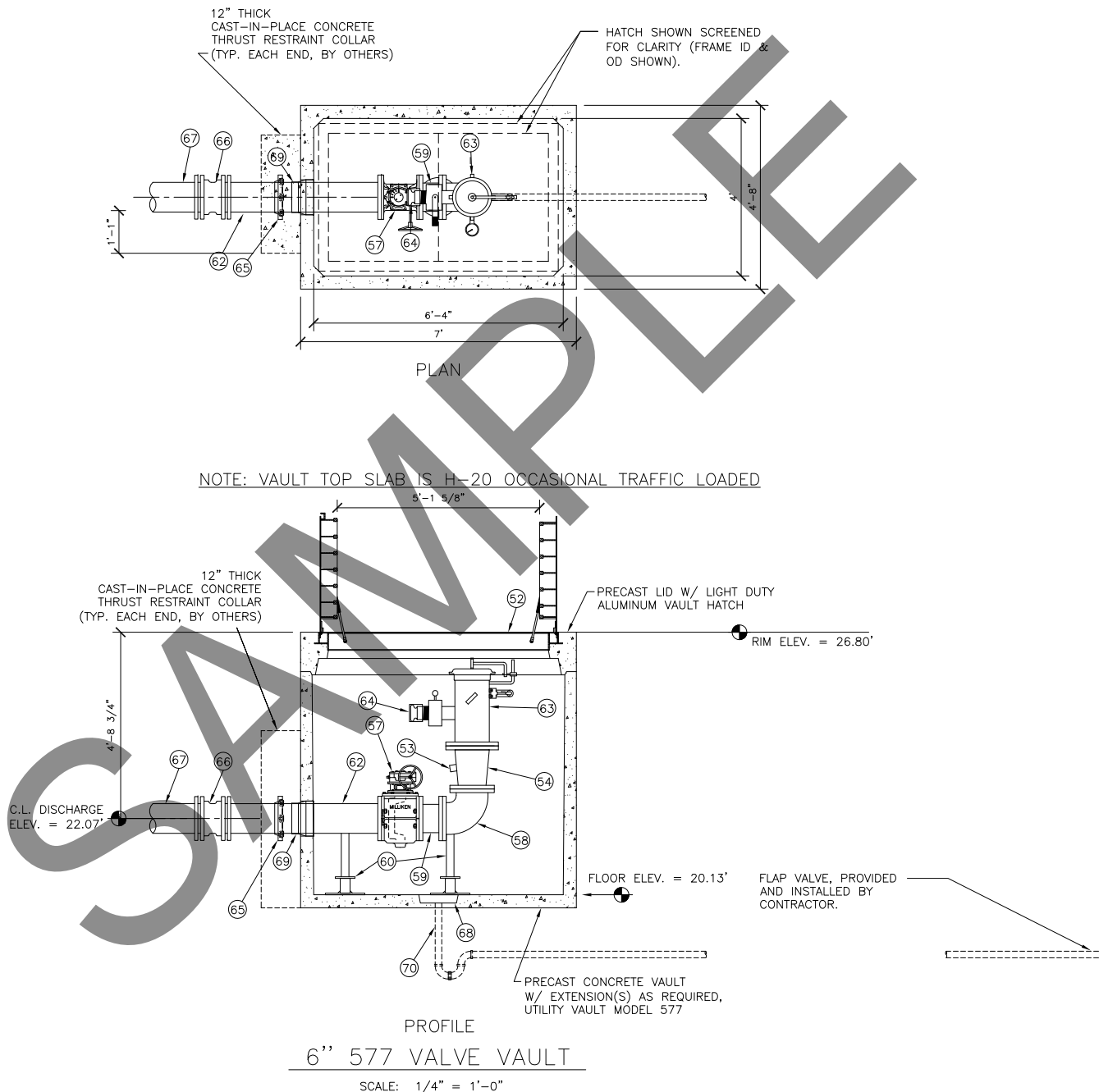
ROMTEC UTILITIES
18240 NORTH BANK ROAD
ROSEBURG, OR 97470
(541)-496-3541
FAX (541)-496-0803

STEWART CROSSING / (THE LAKES)
8' DIA. WETWELL
4" DISCHARGE & 6" VAULT
DUPLEX FLYGT NP3127 PUMPS

SHEET
D1 OF 3
JOB NUMBER
RMTc 0172

VAULT DESIGN NOTES:

1. ALL PIPING & VALVES WITHIN VAULT ARE 8 & 10 INCH DIAMETER.
2. HATCH DESIGN LOADS: H-20 OCCASIONALLY LOADED
3. VALVES AND VAULT PIPING SYSTEM FACTORY TESTED TO 100 PSI AFTER ASSEMBLY.
4. FBEC= FUSION BONDED EPOXY COATED
5. INSTALL DRAIN HOSE TO SUMP IN VAULT.

[illegible]

VERIFY SCALE
BAR IS ONE INCH ON
ORIGINAL DRAWING
IF NOT ONE INCH ON
THIS SHEET, ADJUST
SCALES ACCORDINGLY

0 1"

DSN. —
DRN. AD
CKD. —
DATE: MAY 08

ROMTEC
UTILITIES
18240 NORTH BANK ROAD
ROSEBURG, OR 97470
(541) - 496-3541
FAX (541) - 496-0803

STEWART CROSSING / (THE LAKES)
8" PIG LAUNCH VAULT

SHEET
1 OF 1
JOB NUMBER
RMTC 0172