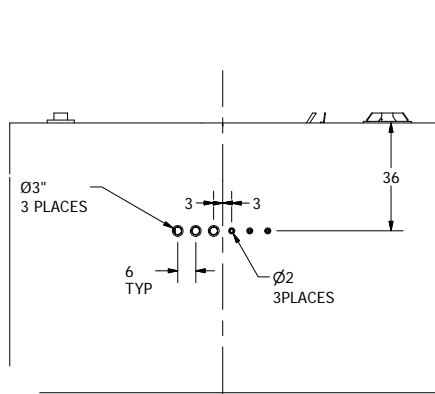
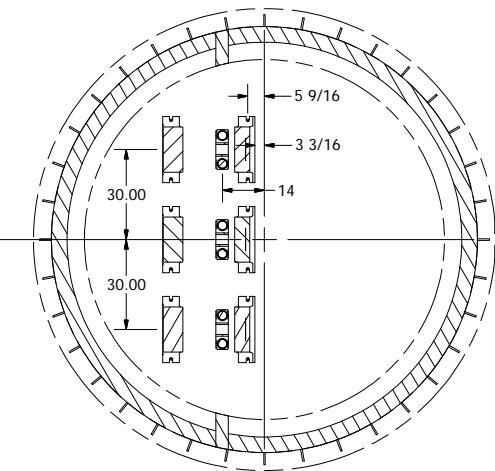


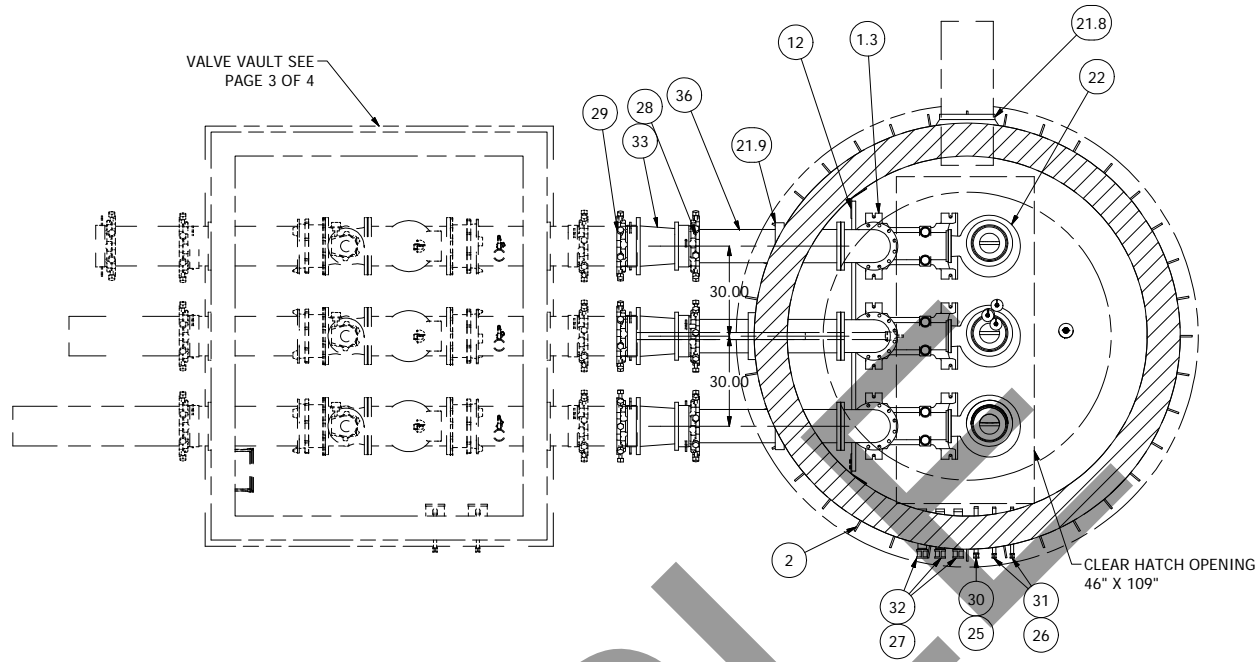
ALL MATERIALS SHOWN ON THIS SHEET WILL BE SUPPLIED BY ROMTEC UTILITIES AND DELIVERED TO THE SITE AFTER THE HOLE HAS BEEN EXCAVATED AND SHORED. THE CONTRACTOR SHALL SUPPLY A CRANE OF SUFFICIENT SIZE TO LOWER ALL THE CONCRETE PIECES INTO THE HOLE SAFELY. THE CONTRACTOR SHALL INSTALL THE WET WELL (AND VALVE VAULT AND METERING VAULT IF APPLICABLE). ROMTEC UTILITIES WILL PROVIDE A REPRESENTATIVE FOR TECHNICAL ASSISTANCE ON THE DAY OF INSTALLATION TO ANSWER ANY QUESTIONS THAT MAY ARISE. THE CONTRACTOR IS RESPONSIBLE FOR ALL PLUMBING AND ELECTRICAL CONNECTIONS AND INSTALLATION. ITEMS NOTED AS "BY OTHERS" WILL BE PROVIDED AND INSTALLED BY THE CONTRACTOR. ROMTEC UTILITIES WILL NOT INSTALL ANY OF THE COMPONENTS SHOWN ON THIS PAGE.



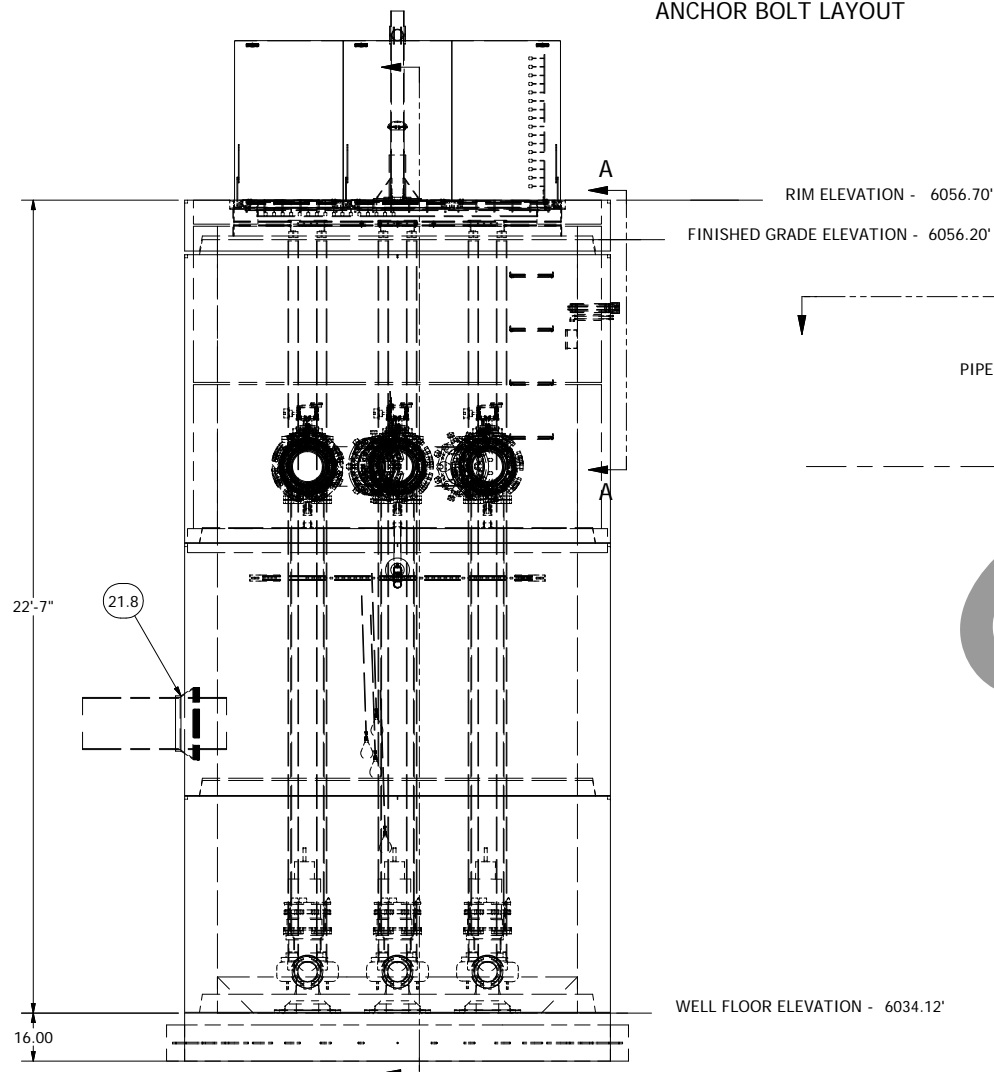
SECTION A-A  
CONDUIT PENETRATIONS



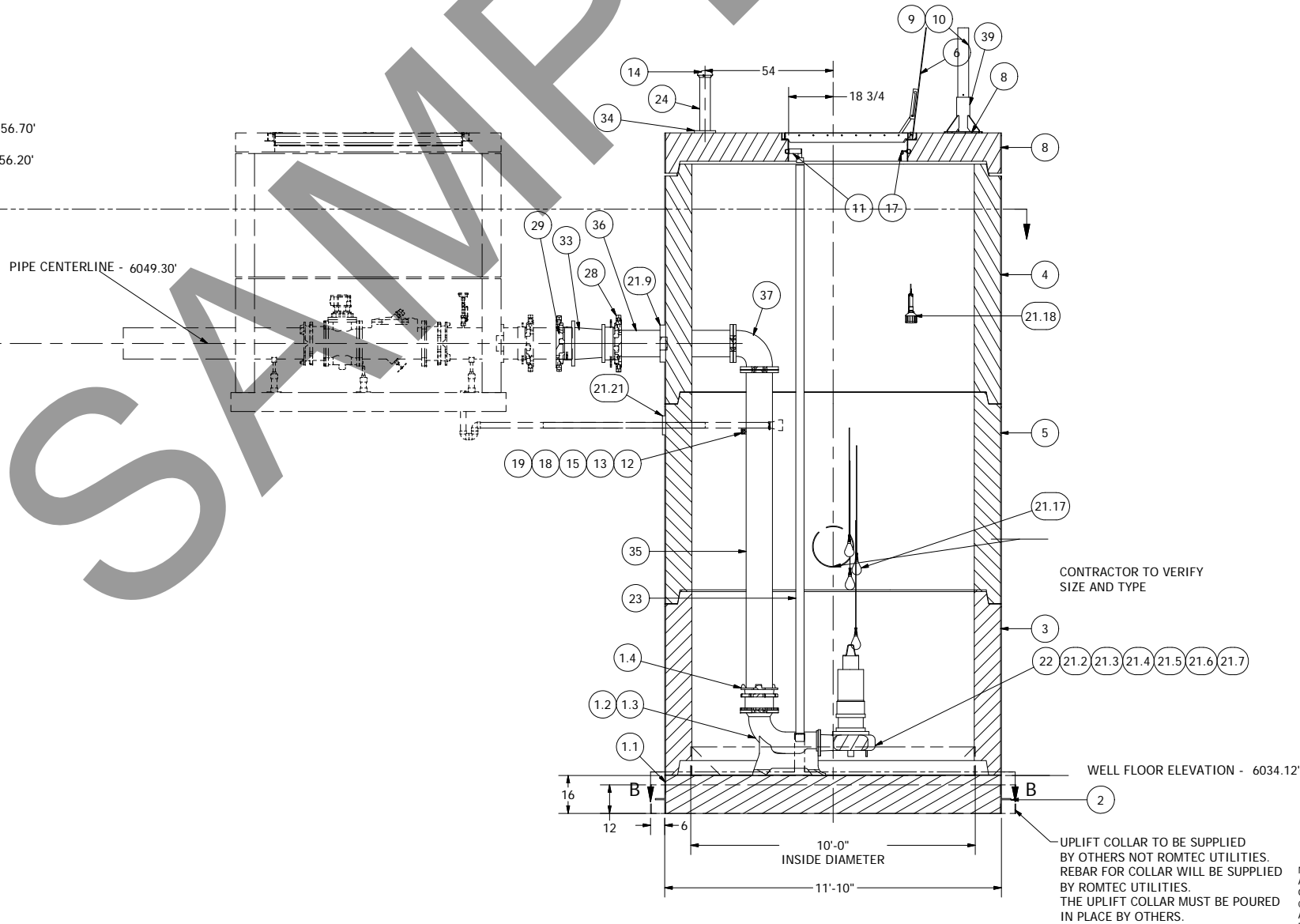
SECTION B-B  
ANCHOR BOLT LAYOUT



NOTE: WET WELL TOP SLAB IS H-20 OCCASIONAL TRAFFIC RATED



© 2011 ROMTEC INC. ALL RIGHTS RESERVED. THESE PLANS AND DRAWINGS MAY NOT BE REPRODUCED, ADAPTED, OR FURTHER DISTRIBUTED, AND NO COMPONENTS MAY BE CONSTRUCTED FROM THESE PLANS, WITHOUT WRITTEN PERMISSION OF ROMTEC, INC.



NOTE: ALL DIMENSIONS AND ELEVATIONS SHOWN ARE NOMINAL DIMENSIONS. IT IS THE RESPONSIBILITY OF THE ON-SITE CONTRACTOR OR ROMTEC UTILITIES CUSTOMER (NOT ROMTEC UTILITIES) TO VERIFY THE ACCURACY OF ANY CRITICAL DIMENSIONS OR ELEVATIONS PRIOR TO SETTING OR INSTALLING ANY EQUIPMENT.

UPRR CHEYENNE

**ROMTEC UTILITIES**  
18240 NORTH BANK ROAD  
ROSEBURG, OREGON 97470  
(541) 496-9678  
FAX (541) 496-0804

SW - 1 STORM WATER  
10' WET WELL & VALVE VAULT

SHEET  
2 of 4

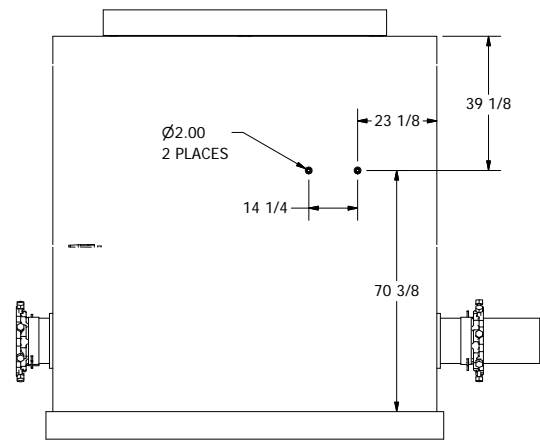
JOB NUMBER  
RMTC  
0000

VERIFY SCALE  
BAR IS ONE INCH ON  
ORIGINAL DRAWING  
0 1"  
IF NOT ONE INCH ON  
THIS SHEET ADJUST  
SCALE ACCORDINGLY

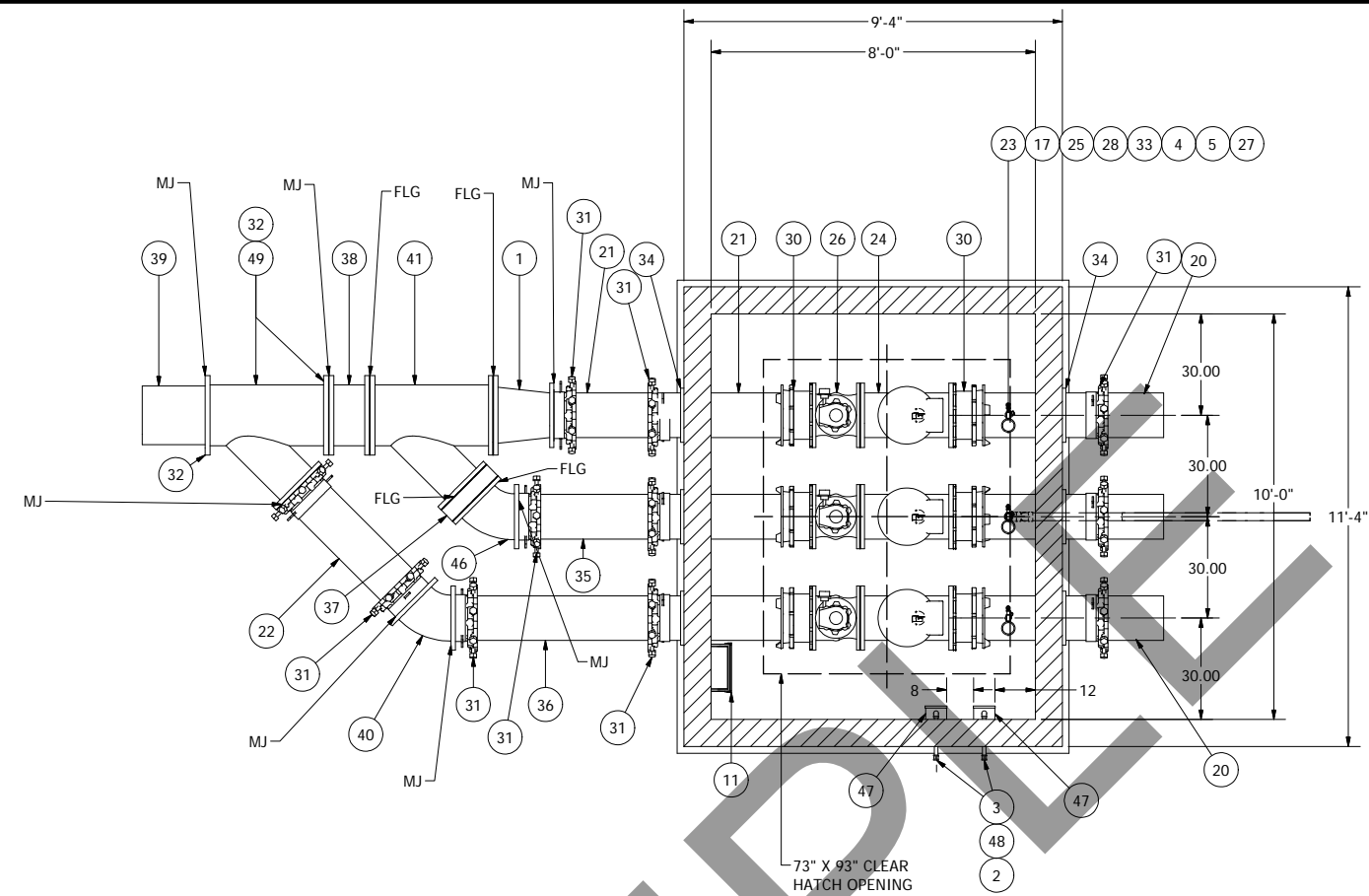
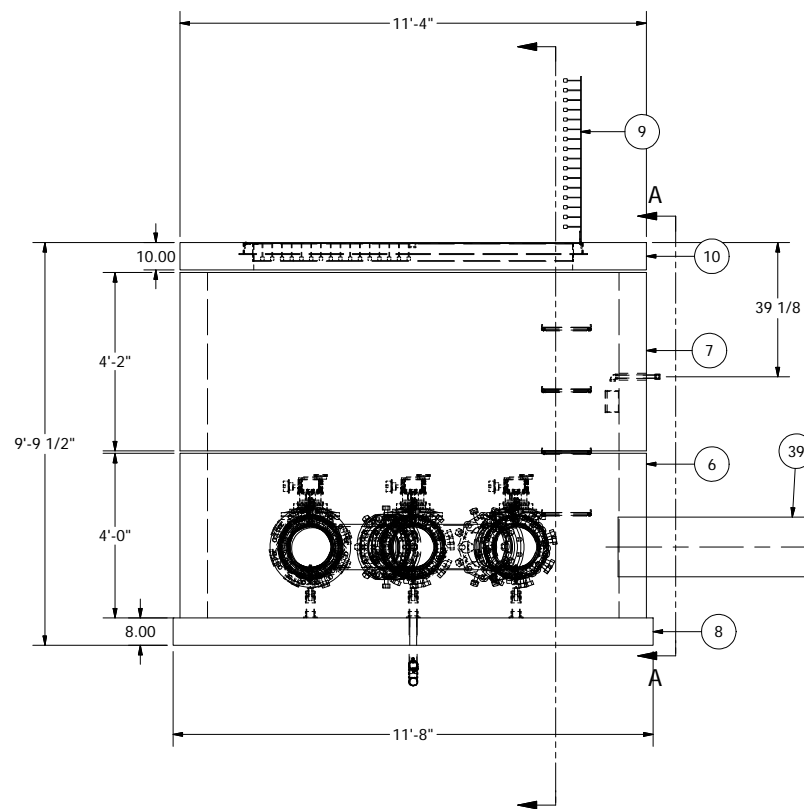
COMPONENT  
DRAWING

REV	DESCRIPTION	DATE	APPROV
3	REVISED PRODUCTION LAUNCH	9-4-12	AD
2	REVISED PER 7/30/12 COMMENTS	8-14-12	AD
1	COMPONENT DRAWING	3-26-12	AD

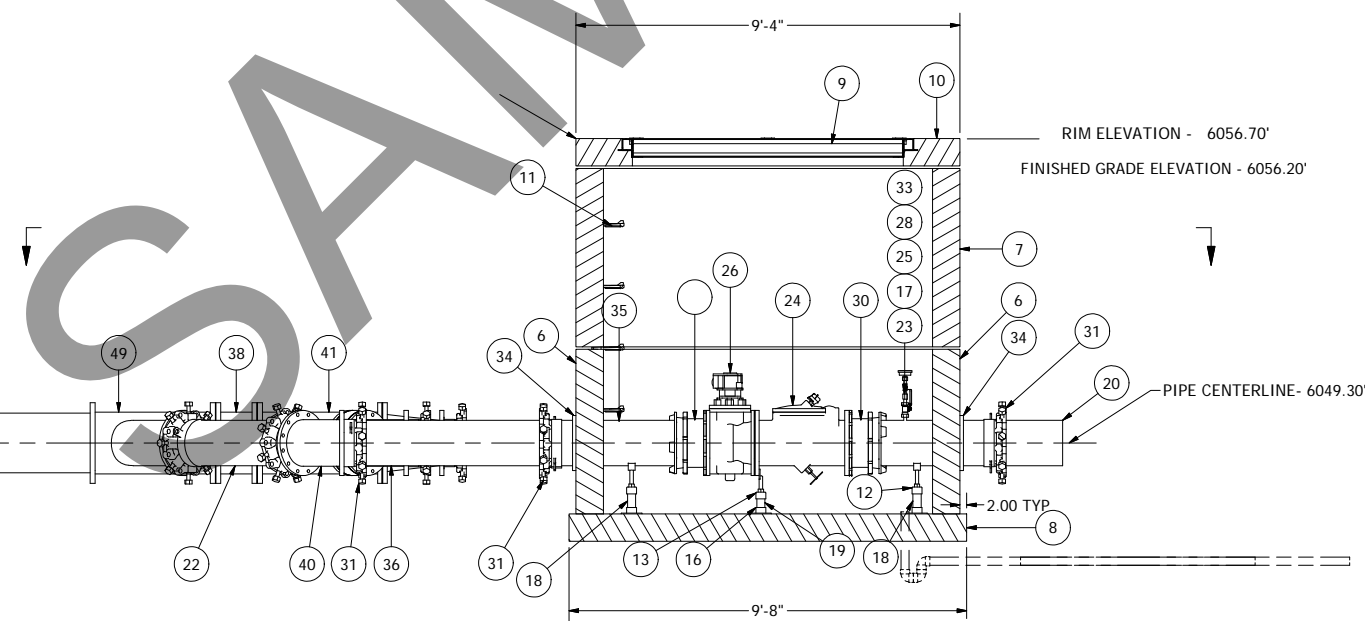
REVISION HISTORY



VIEW A-A  
CONDUIT PENETRATIONS



NOTE: VAULT TOP SLAB IS H-20 OCCASIONAL RATED



NOTE: ALL DIMENSIONS AND ELEVATIONS SHOWN ARE NOMINAL DIMENSIONS. IT IS THE RESPONSIBILITY OF THE ON-SITE CONTRACTOR OR ROMTEC UTILITIES CUSTOMER (NOT ROMTEC UTILITIES) TO VERIFY THE ACCURACY OF ANY CRITICAL DIMENSIONS OR ELEVATIONS PRIOR TO SETTING OR INSTALLING ANY EQUIPMENT.

DRAWING GEOMETRY  
FOR CONSTRUCTION  
DO NOT SCALE  
THIS DRAWING

DSN - AD  
DRN - AD  
CKD -  
DATE - 3-26-12

REV	DESCRIPTION	DATE	APPROV
3	REVISED FOR ACTUAL AVAILABLE FITTINGS	10-15-12	AD
2	REVISED PER 7/30/12 COMMENTS	8-14-12	AD
1	COMPONENT DRAWING	3-26-12	AD

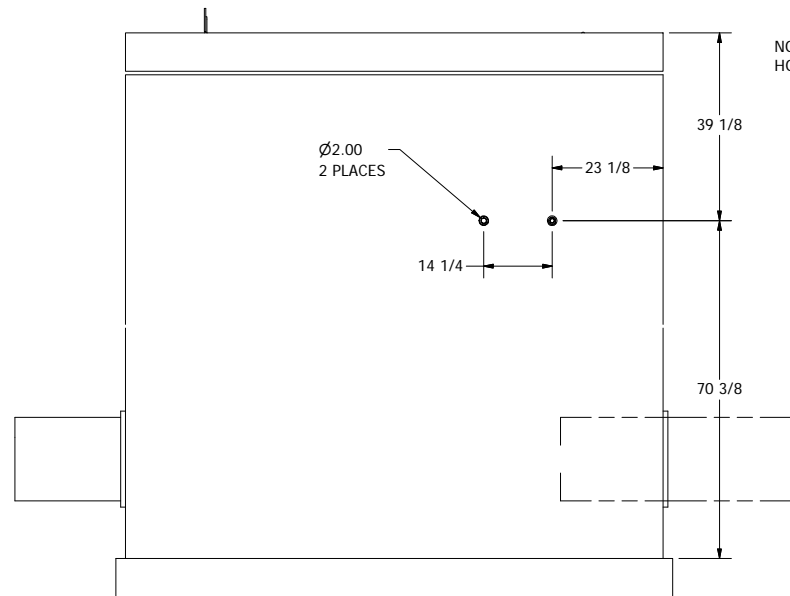
**ROMTEC UTILITIES**  
18240 NORTH BANK ROAD  
ROSEBURG, OREGON 97470  
(541) 496-9678  
FAX (541) 496-0804

UPRR CHEYENNE

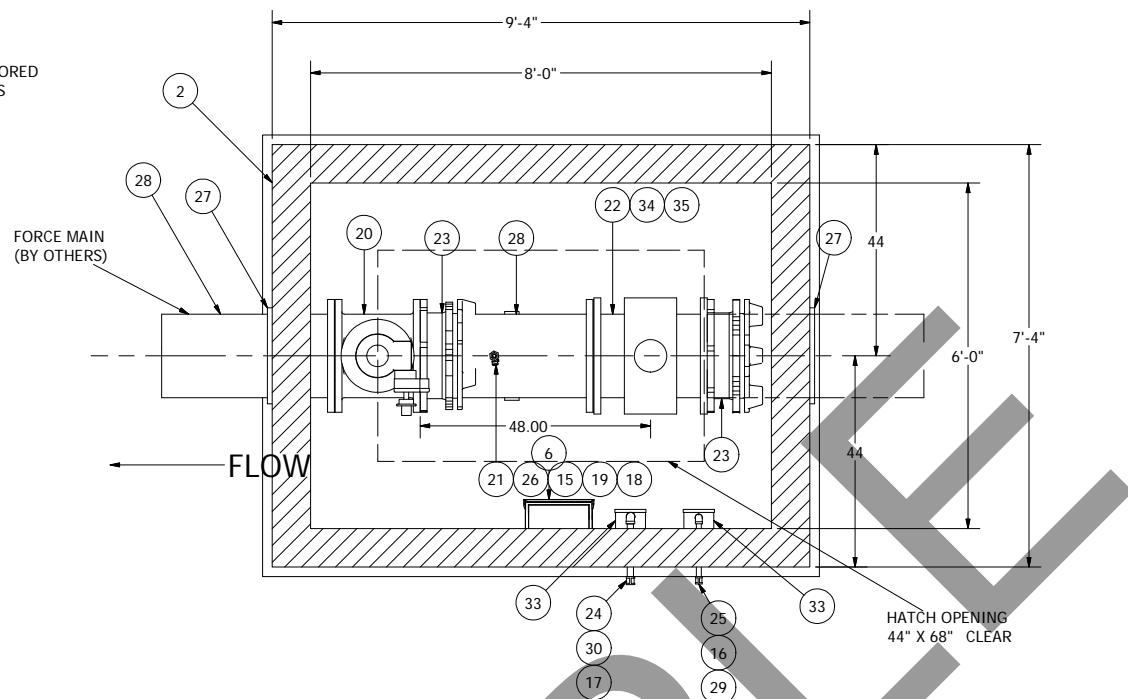
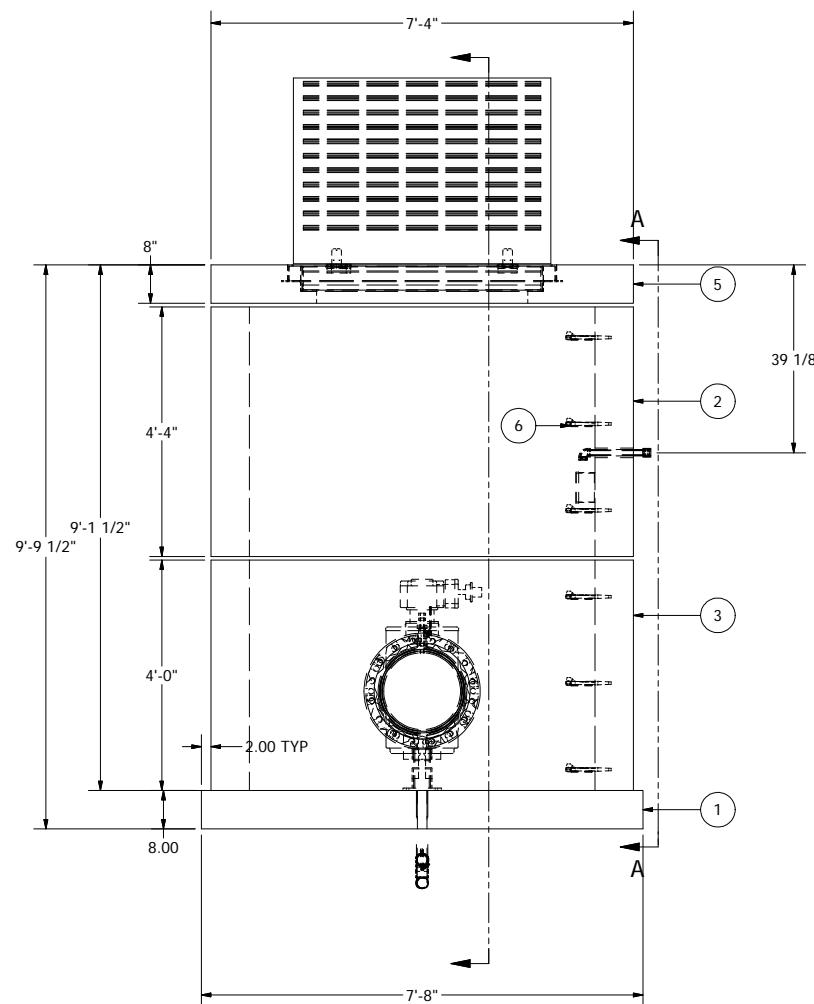
SW - 1 VALVE VAULT  
12" - VALVE VAULT

SHEET  
3 of 4

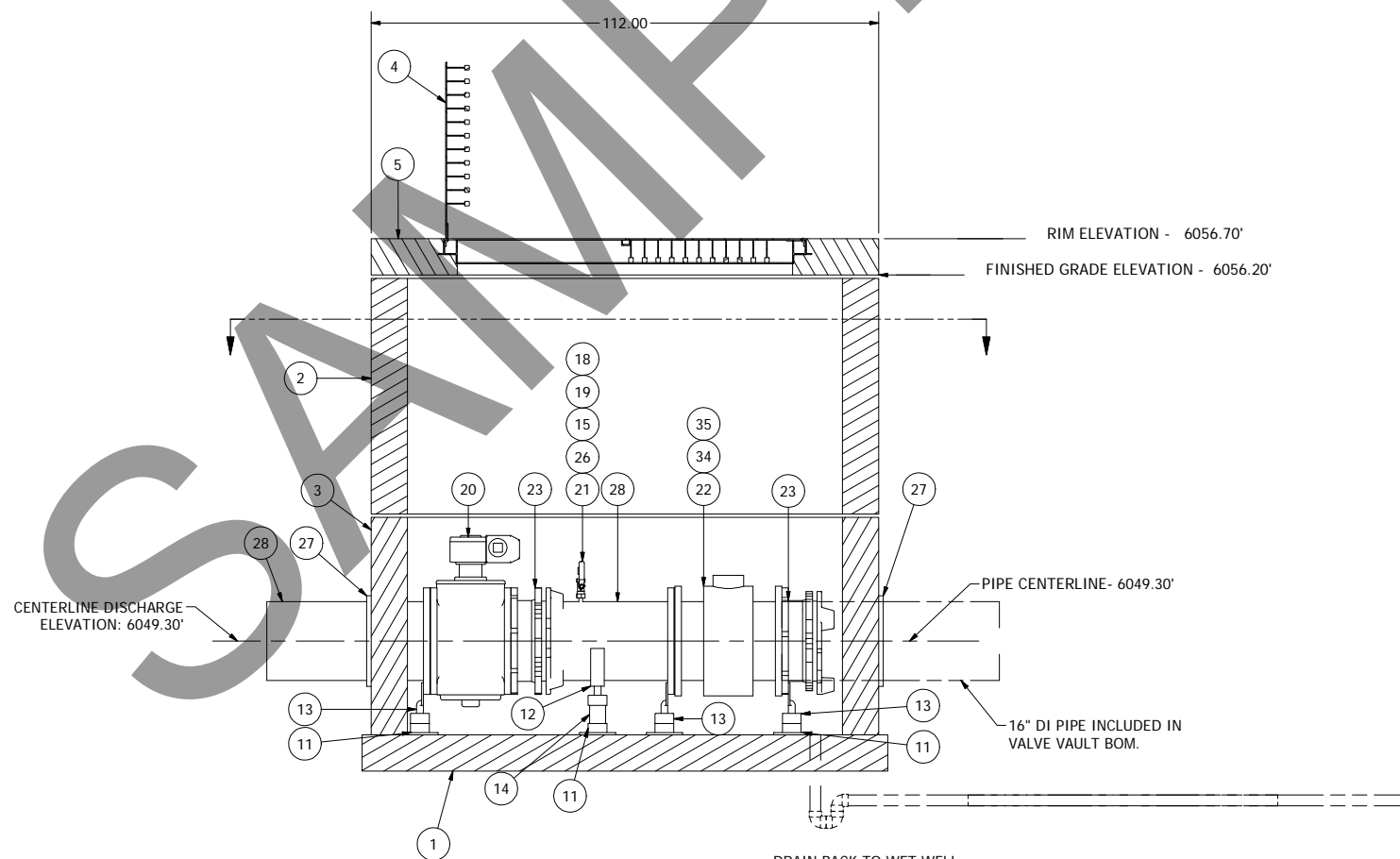
JOB NUMBER  
RMTC  
0000



VIEW A-A  
CONDUIT PENETRATIONS



NOTE: VAULT TOP SLAB IS H-20 OCCASIONAL RATED



DRAIN BACK TO WET WELL:  
3" PLAIN HOLE IN VAULT  
(PROVIDED)  
2" PEE TRAP ON VAULT END  
WITH CHECK VALVE AT END OF  
PIPE IN WET WELL.  
(BY OTHERS) NOT ROMTEC UTILITIES

NOTE: ALL DIMENSIONS AND ELEVATIONS SHOWN ARE NOMINAL DIMENSIONS. IT IS THE RESPONSIBILITY OF THE ON-SITE CONTRACTOR OR ROMTEC UTILITIES CUSTOMER (NOT ROMTEC UTILITIES) TO VERIFY THE ACCURACY OF ANY CRITICAL DIMENSIONS OR ELEVATIONS PRIOR TO SETTING OR INSTALLING ANY EQUIPMENT.

## METER VAULT 16" PIPING AND VALVES

ALL MATERIALS SHOWN ON THIS SHEET WILL BE SUPPLIED BY ROMTEC UTILITIES AND DELIVERED TO THE SITE AFTER THE HOLE HAS BEEN EXCAVATED AND SHORED. THE CONTRACTOR SHALL SUPPLY A CRANE OF SUFFICIENT SIZE TO LOWER ALL THE CONCRETE PIECES INTO THE HOLE SAFELY. THE THE CONTRACTOR SHALL INSTALL THE WET WELL (AND VALVE VAULT AND METERING VAULT IF APPLICABLE). ROMTEC UTILITIES WILL PROVIDE A REPRESENTATIVE FOR TECHNICAL ASSISTANCE ON THE DAY OF INSTALLATION TO ANSWER ANY QUESTIONS THAT MAY ARISE. THE CONTRACTOR IS RESPONSIBLE FOR ALL PLUMBING AND ELECTRICAL CONNECTIONS AND INSTALLATION. ITEMS NOTED AS "BY OTHERS" WILL BE PROVIDED AND INSTALLED BY THE CONTRACTOR. ROMTEC UTILITIES WILL NOT INSTALL ANY OF THE COMPONENTS SHOWN ON THIS PAGE.

REVISION HISTORY		DATE	APPROV
2	REVISED PER 7/30/12 COMMENTS	8-20-12	AD
1	COMPONENT DRAWING	3-27-12	AD
REV	DESCRIPTION	DATE	APPROV
DATE	3-27-12		

COMPONENT  
DRAWING

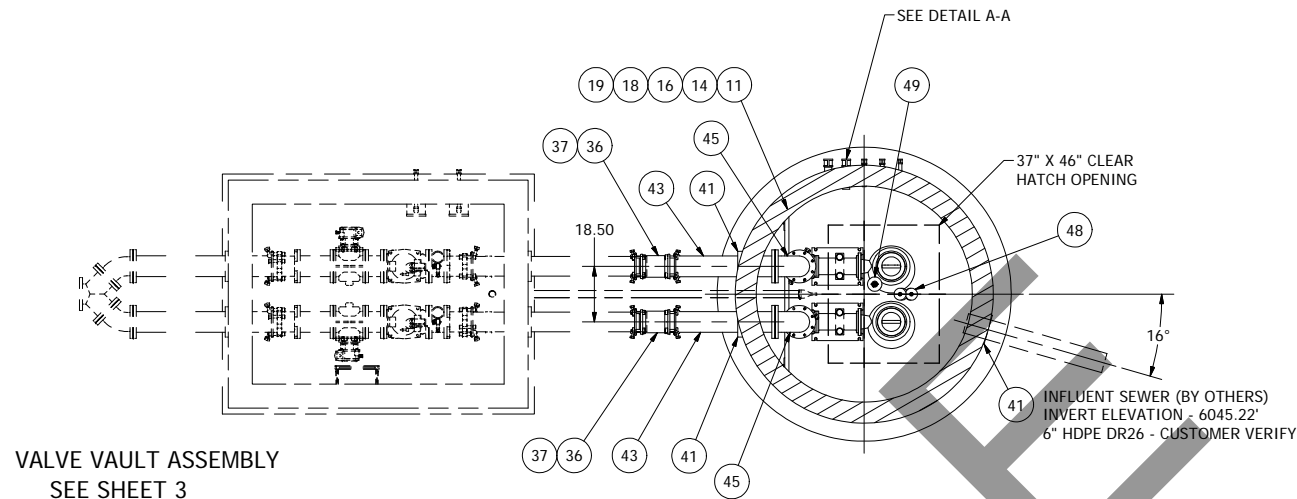
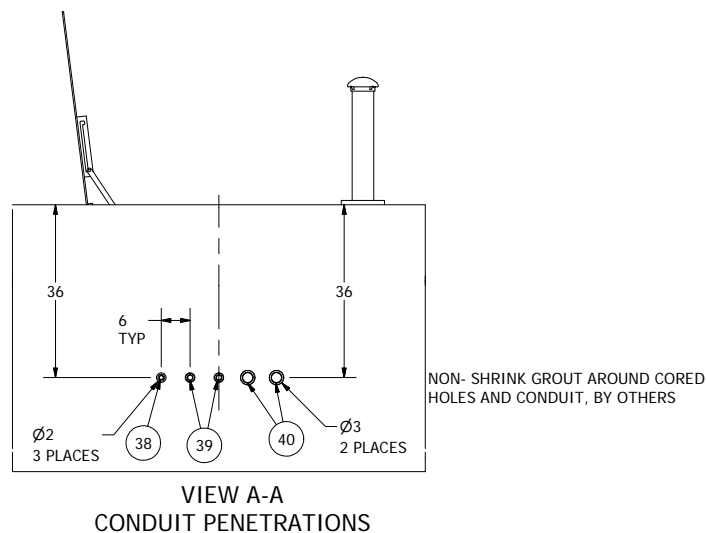
**ROMTEC UTILITIES**  
18240 NORTH BANK ROAD  
ROSEBURG, OREGON 97470  
(541) 496-9678  
FAX (541) 496-0804

UPRR CHEYENNE

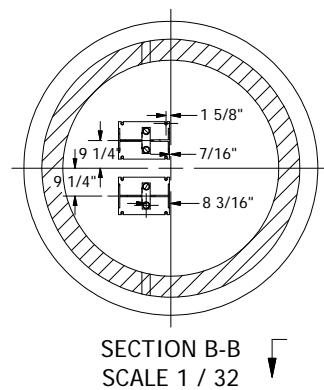
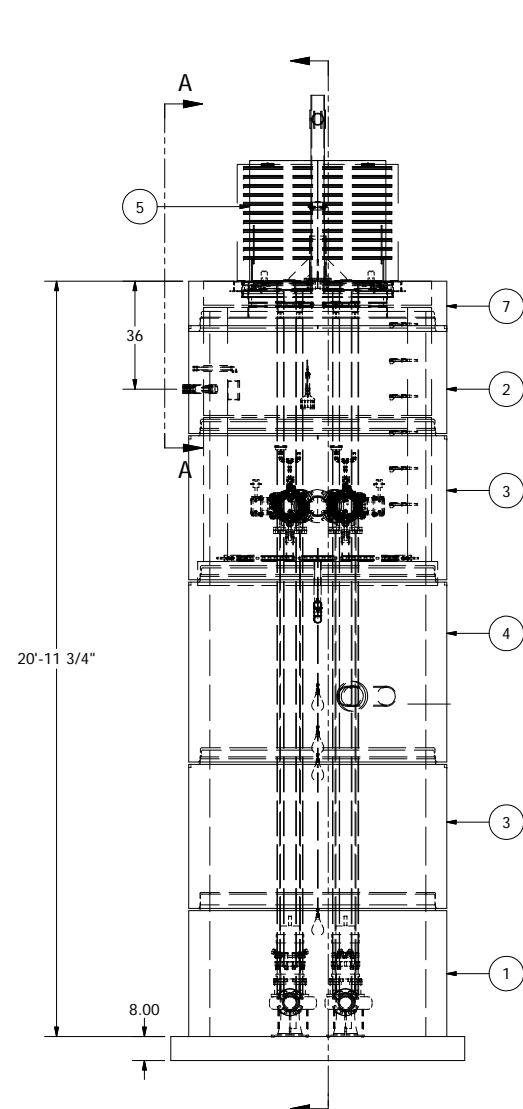
SW - 1 METER VAULT  
16" METER VAULT

SHEET  
4 of 4

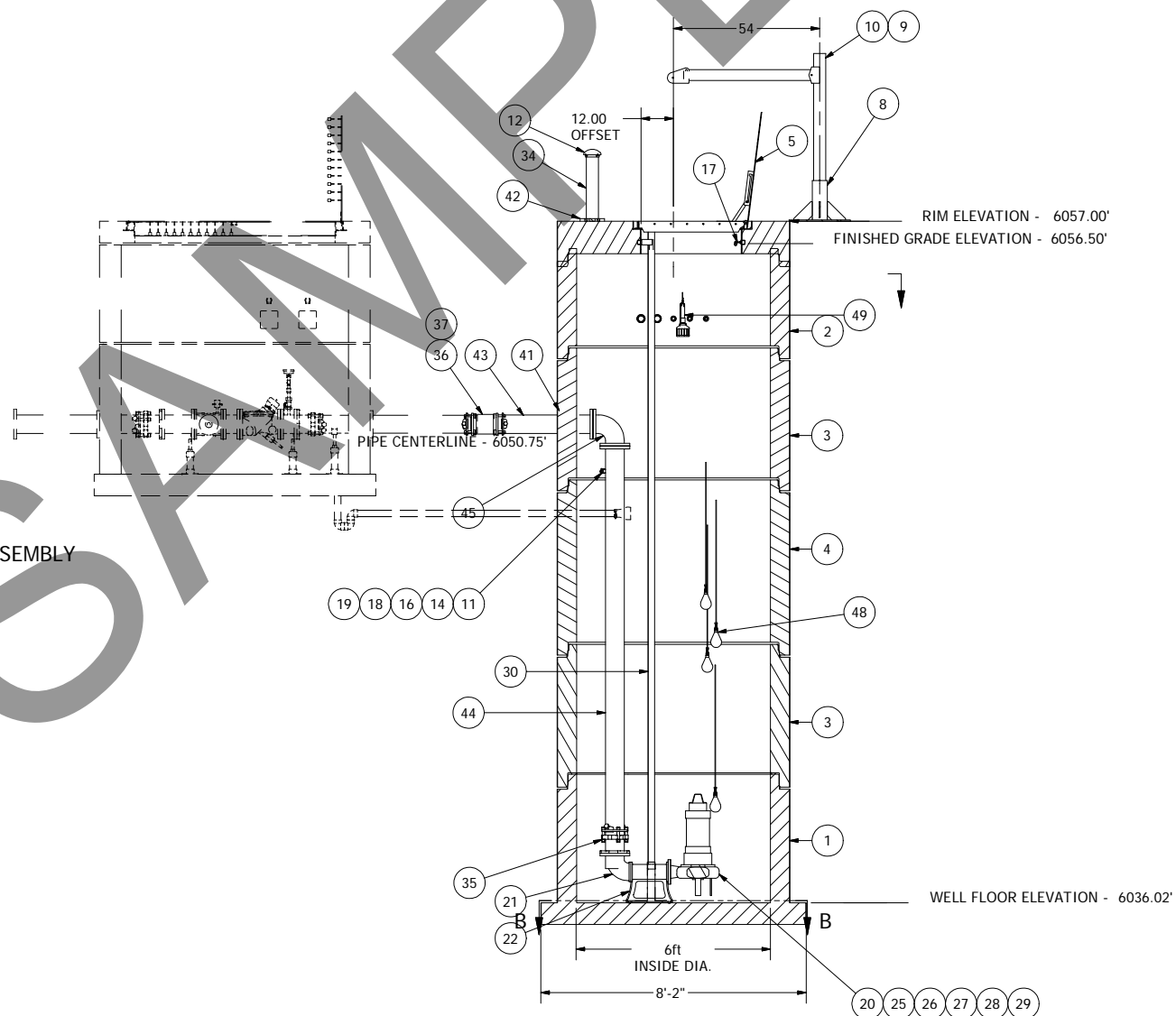
JOB NUMBER  
RMTC  
0000



NOTE: WET WELL TOP SLAB IS H-20 OCCASIONAL TRAFFIC RATED

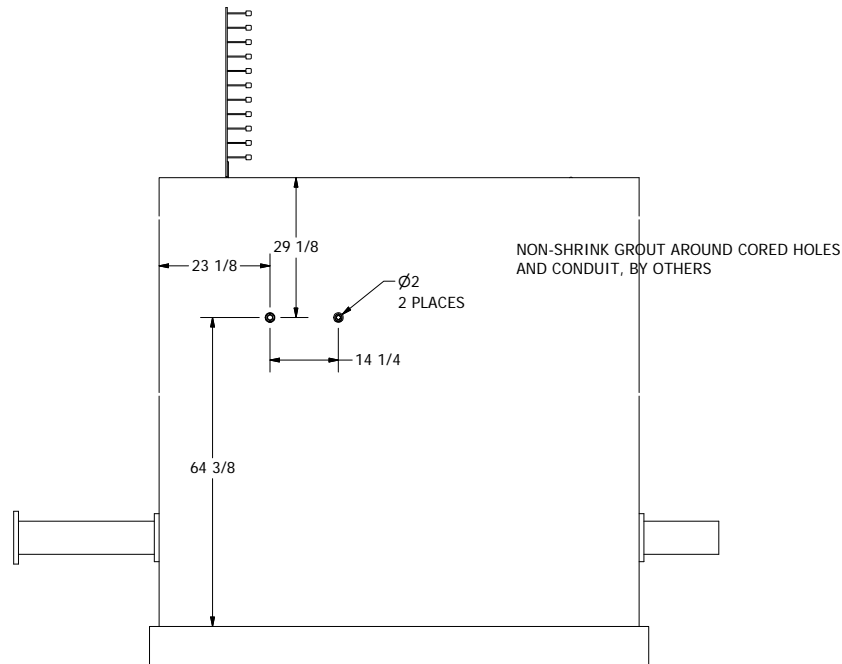


VALVE VAULT ASSEMBLY  
SEE SHEET 3

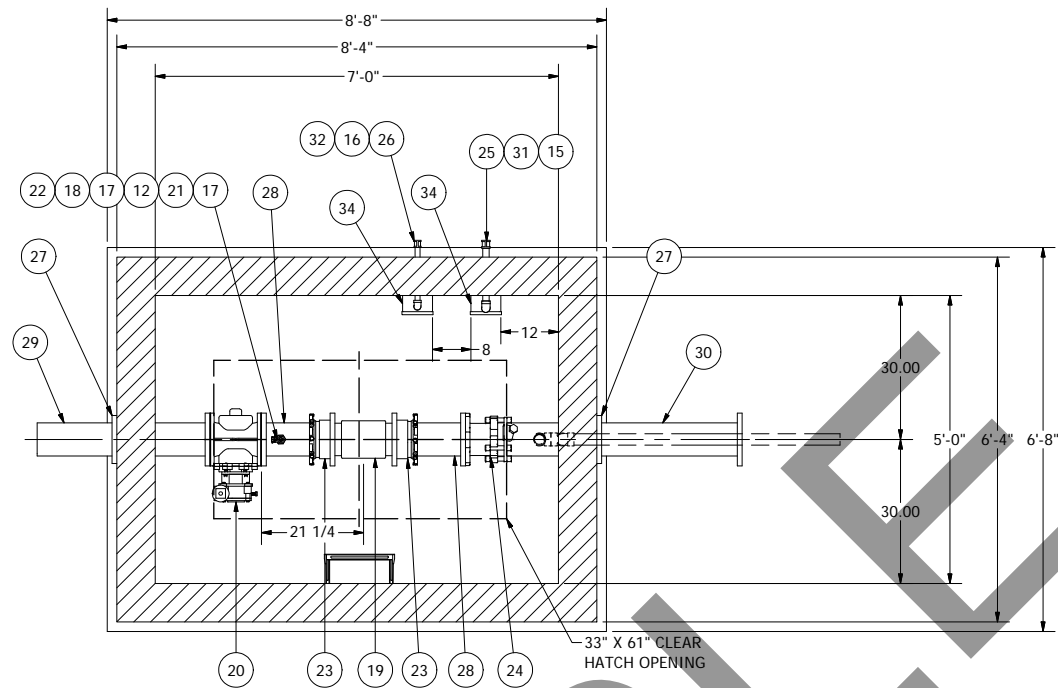
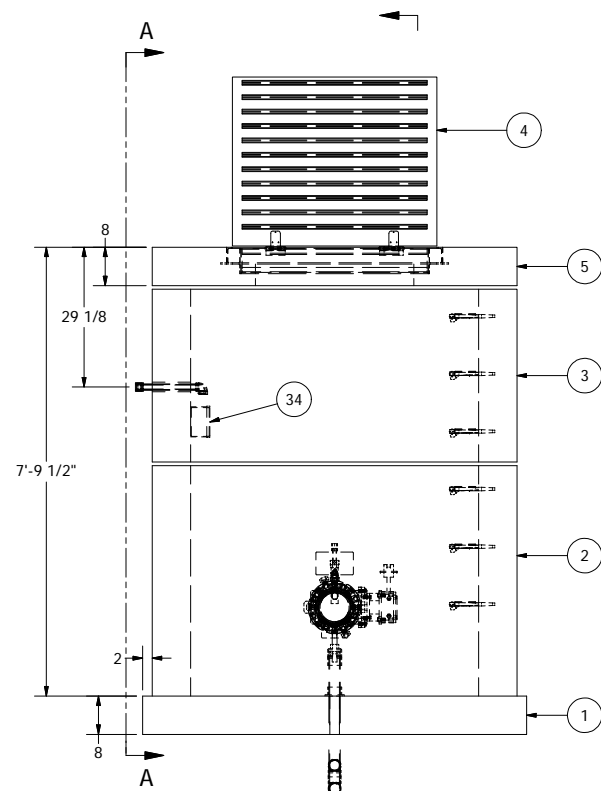


NOTE: ALL DIMENSIONS AND ELEVATIONS SHOWN ARE NOMINAL DIMENSIONS. IT IS THE RESPONSIBILITY OF THE ON-SITE CONTRACTOR OR ROMTEC UTILITIES CUSTOMER (NOT ROMTEC UTILITIES) TO VERIFY THE ACCURACY OF ANY CRITICAL DIMENSIONS OR ELEVATIONS PRIOR TO SETTING OR INSTALLING ANY EQUIPMENT.

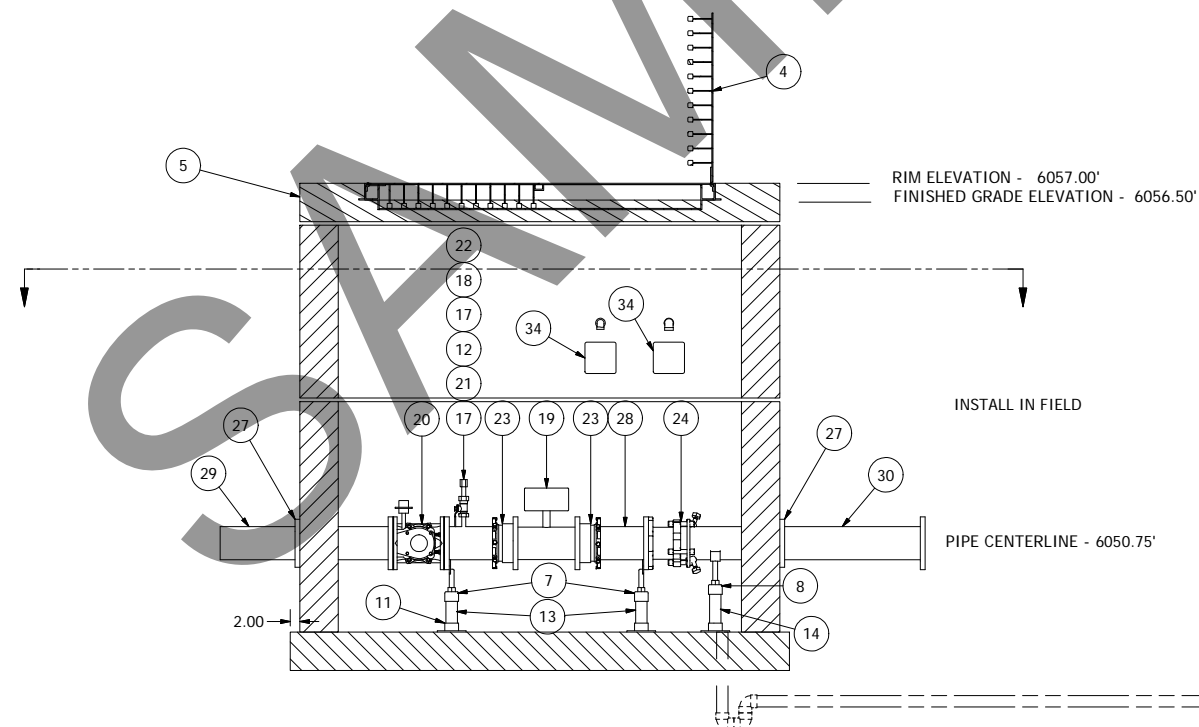
ALL MATERIALS SHOWN ON THIS SHEET WILL BE SUPPLIED BY ROMTEC UTILITIES AND DELIVERED TO THE SITE AFTER THE HOLE HAS BEEN EXCAVATED AND SHORED. THE CONTRACTOR SHALL SUPPLY A CRANE OF SUFFICIENT SIZE TO LOWER ALL THE CONCRETE PIECES INTO THE HOLE SAFELY. THE CONTRACTOR SHALL INSTALL THE WET WELL (AND VALVE VAULT AND METERING VAULT IF APPLICABLE). ROMTEC UTILITIES WILL PROVIDE A REPRESENTATIVE FOR TECHNICAL ASSISTANCE ON THE DAY OF INSTALLATION TO ANSWER ANY QUESTIONS THAT MAY ARISE. THE CONTRACTOR IS RESPONSIBLE FOR ALL PLUMBING AND ELECTRICAL CONNECTIONS AND INSTALLATION. ITEMS NOTED AS "BY OTHERS" WILL BE PROVIDED AND INSTALLED BY THE CONTRACTOR. ROMTEC UTILITIES WILL NOT INSTALL ANY OF THE COMPONENTS SHOWN ON THIS PAGE.



VIEW A-A  
CONDUIT PENETRATIONS



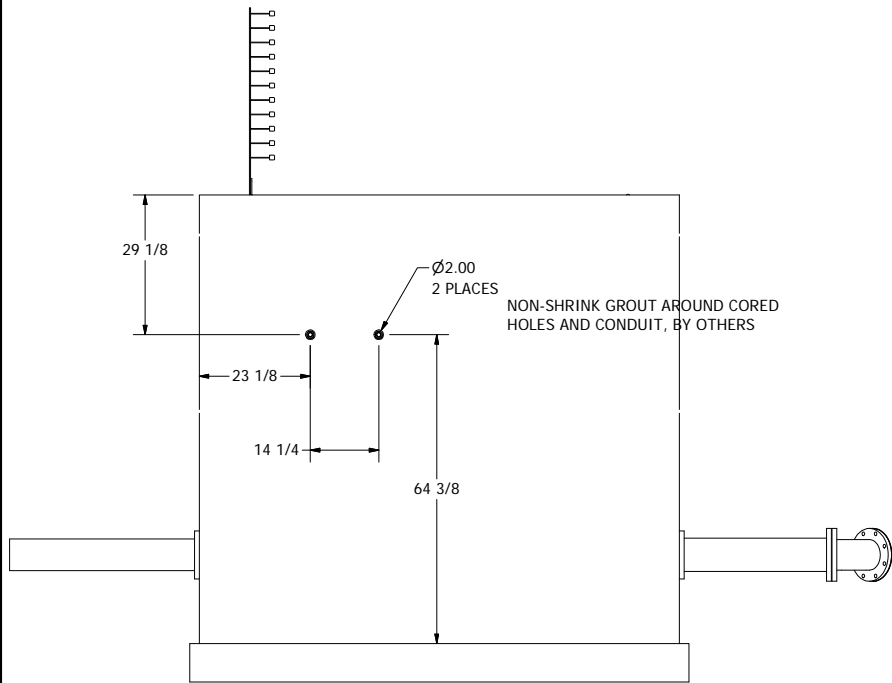
NOTE: VAULT TOP SLAB IS H-20 OCCASIONAL RATED



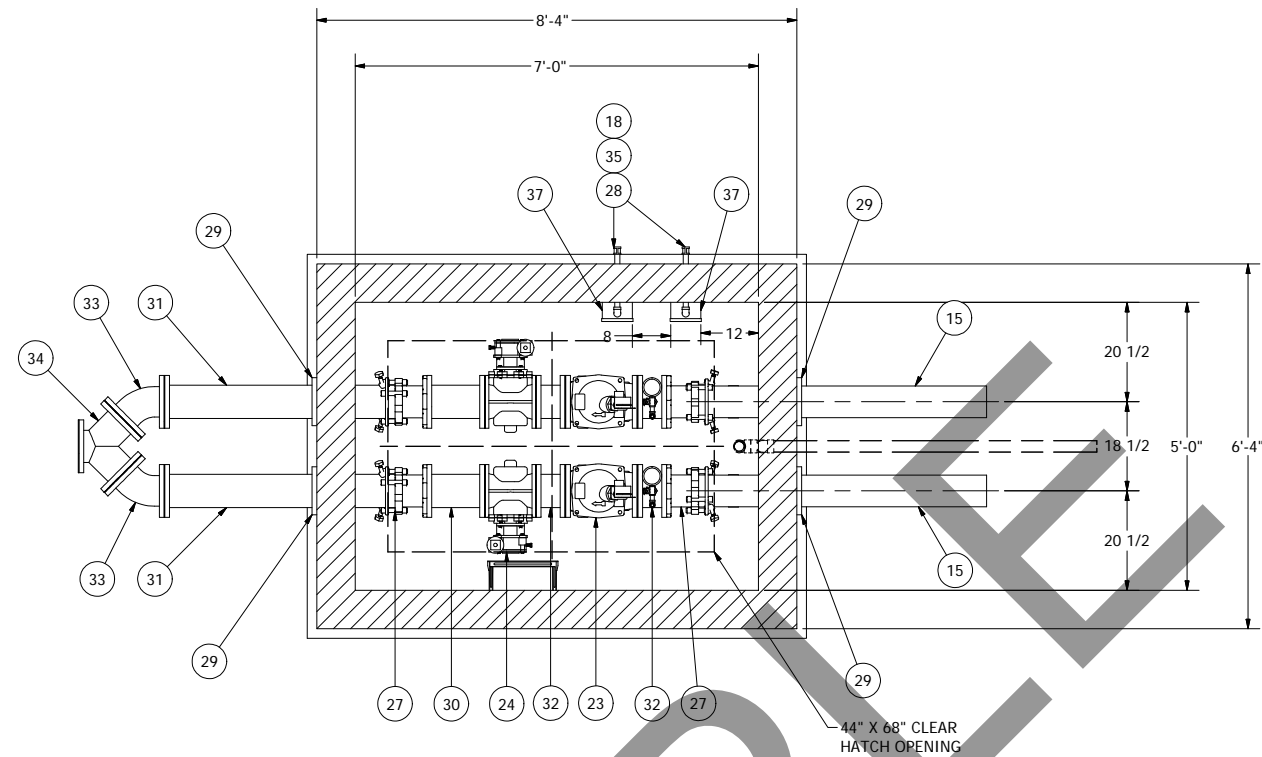
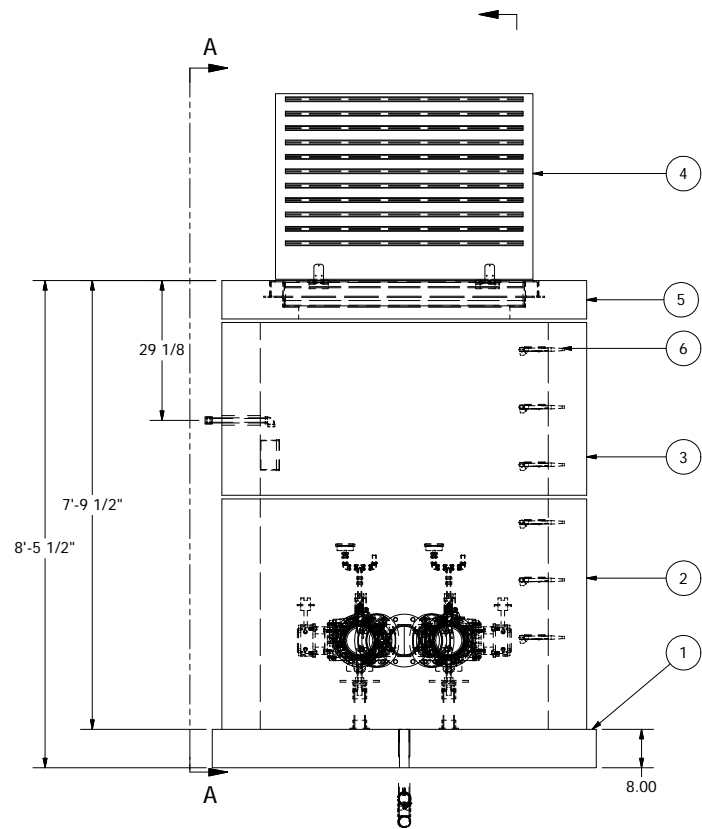
DRAIN BACK TO WET WELL:  
3" PLAIN HOLE IN VAULT  
(PROVIDED)  
2" PEE TRAP ON VAULT END  
WITH CHECK VALVE AT END OF  
PIPE IN WET WELL.  
(BY OTHERS) NOT ROMTEC UTILITIES

NOTE: ALL DIMENSIONS AND ELEVATIONS SHOWN  
ARE NOMINAL DIMENSIONS. IT IS THE RESPONSIBILITY  
OF THE ON-SITE CONTRACTOR OR ROMTEC UTILITIES  
CUSTOMER (NOT ROMTEC UTILITIES) TO VERIFY THE  
ACCURACY OF ANY CRITICAL DIMENSIONS OR ELEVATIONS  
PRIOR TO SETTING OR INSTALLING ANY EQUIPMENT.

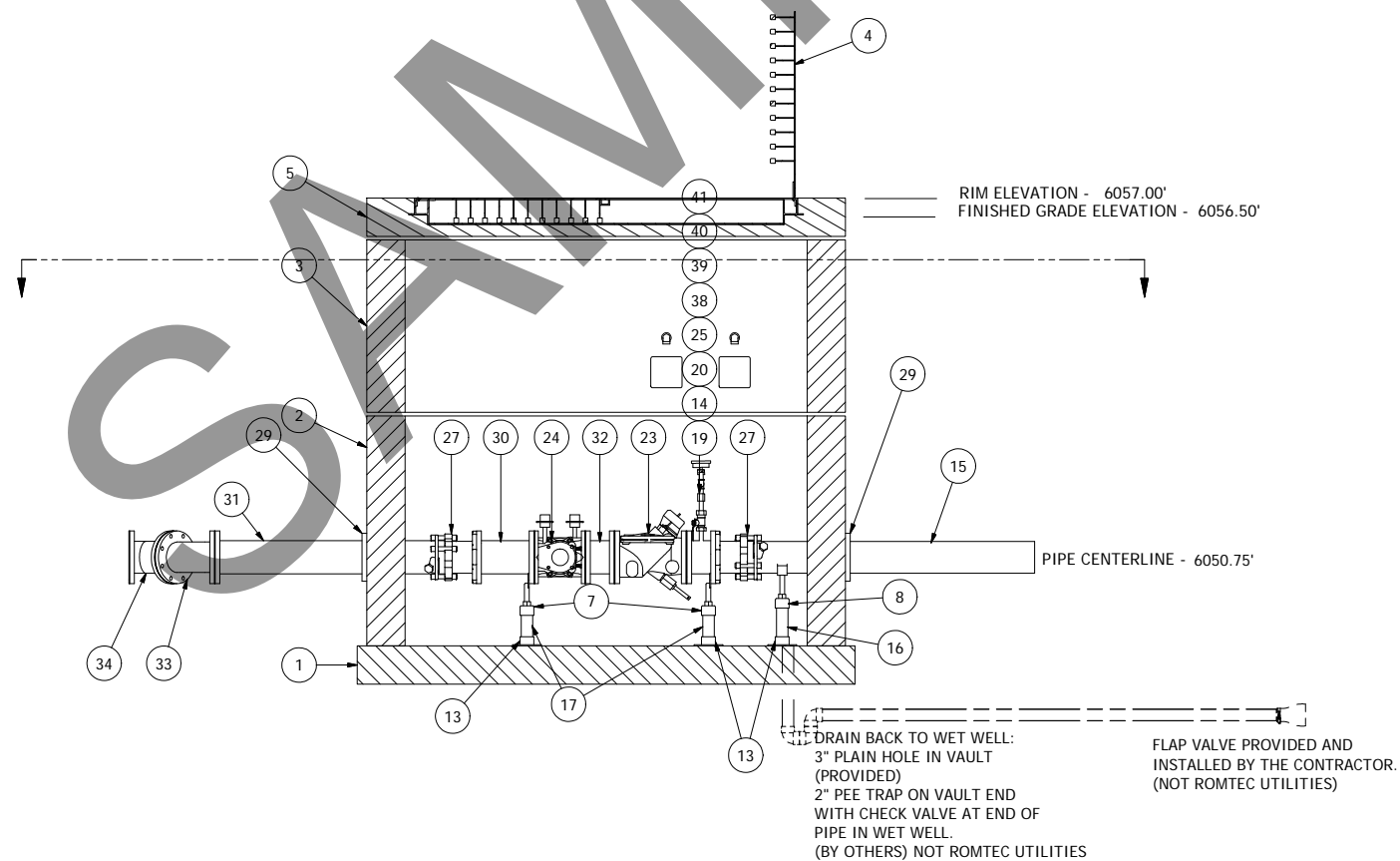
7' X 5' METER VAULT  
6" PIPING AND VALVES



VIEW A-A  
CONDUIT PENETRATIONS



NOTE: VAULT TOP SLAB IS H-20 OCCASIONAL RATED



NOTE: ALL DIMENSIONS AND ELEVATIONS SHOWN ARE NOMINAL DIMENSIONS. IT IS THE RESPONSIBILITY OF THE ON-SITE CONTRACTOR OR ROMTEC UTILITIES CUSTOMER (NOT ROMTEC UTILITIES) TO VERIFY THE ACCURACY OF ANY CRITICAL DIMENSIONS OR ELEVATIONS PRIOR TO SETTING OR INSTALLING ANY EQUIPMENT.

8' X 6' VALVE VAULT  
6" PIPING AND VALVES