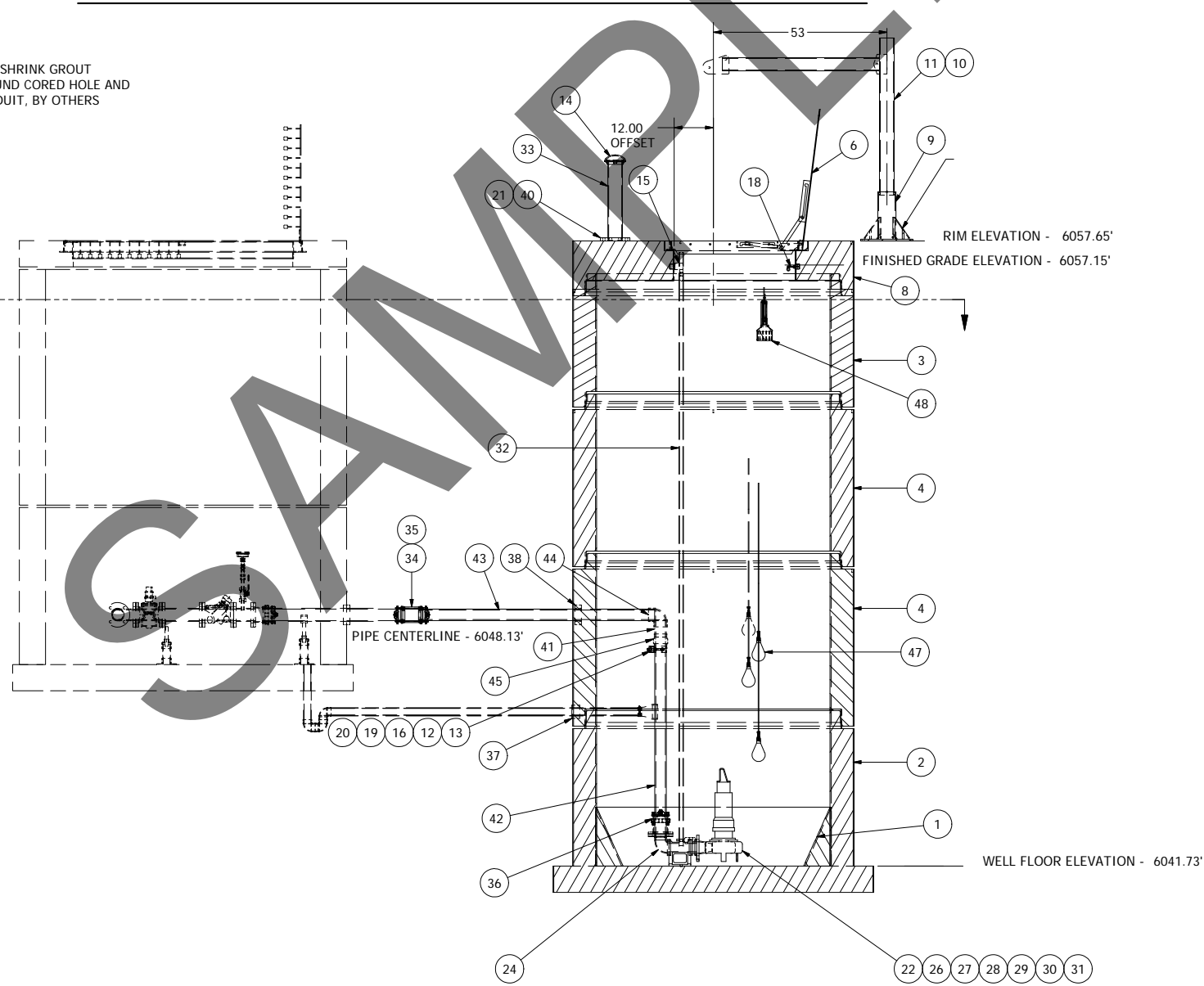
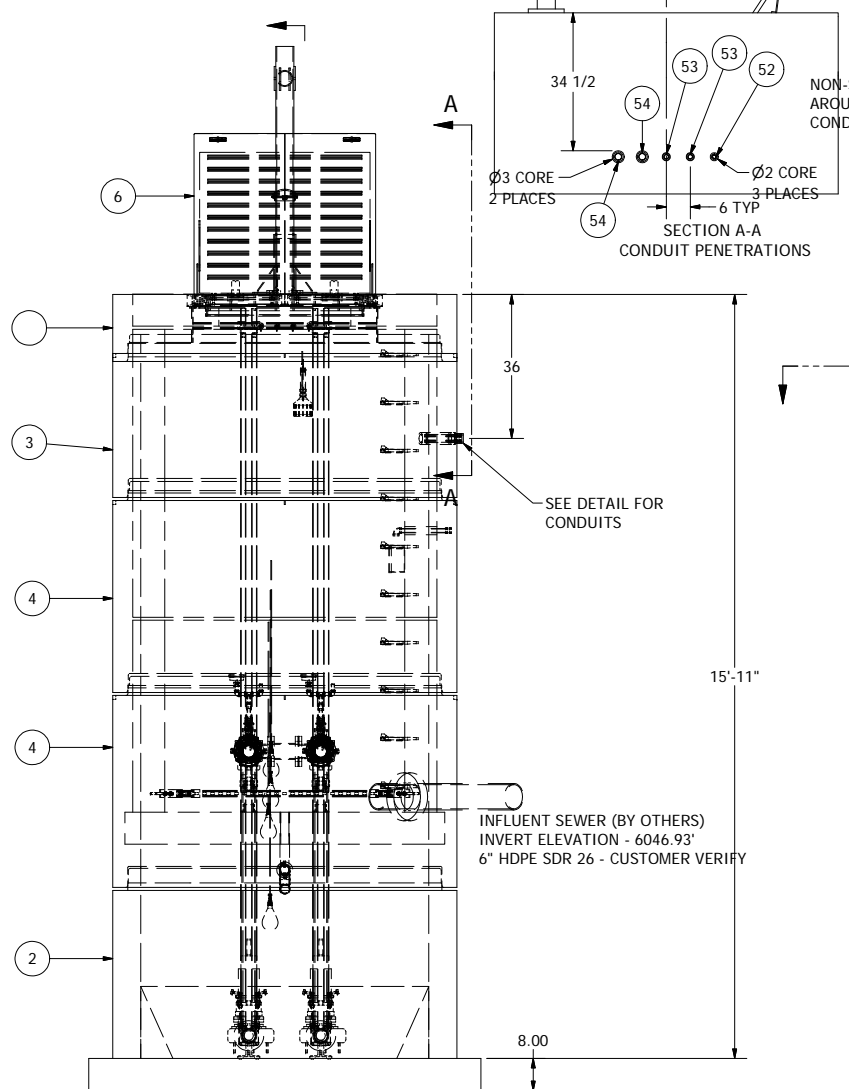


NOTE: WET WELL TOP SLAB IS H-20 OCCASIONAL TRAFFIC RATED



NOTE: ALL DIMENSIONS AND ELEVATIONS SHOWN ARE NOMINAL DIMENSIONS. IT IS THE RESPONSIBILITY OF THE ON-SITE CONTRACTOR OR ROMTEC UTILITIES CUSTOMER (NOT ROMTEC UTILITIES) TO VERIFY THE ACCURACY OF ANY CRITICAL DIMENSIONS OR ELEVATIONS PRIOR TO SETTING OR INSTALLING ANY EQUIPMENT.

ALL MATERIALS SHOWN ON THIS SHEET WILL BE SUPPLIED BY ROMTEC UTILITIES AND DELIVERED TO THE SITE AFTER THE HOLE HAS BEEN EXCAVATED AND SHORED. THE CONTRACTOR SHALL SUPPLY A CRANE OF SUFFICIENT SIZE TO LOWER ALL THE CONCRETE PIECES INTO THE HOLE SAFELY. THE CONTRACTOR SHALL INSTALL THE WET WELL (AND VALVE VAULT AND METERING VAULT IF APPLICABLE). ROMTEC UTILITIES WILL PROVIDE A REPRESENTATIVE FOR TECHNICAL ASSISTANCE ON THE DAY OF INSTALLATION TO ANSWER ANY QUESTIONS THAT MAY ARISE. THE CONTRACTOR IS RESPONSIBLE FOR ALL PLUMBING AND ELECTRICAL CONNECTIONS AND INSTALLATION. ITEMS NOTED AS "BY OTHERS" WILL BE PROVIDED AND INSTALLED BY THE CONTRACTOR. ROMTEC UTILITIES WILL NOT INSTALL ANY OF THE COMPONENTS SHOWN ON THIS PAGE.

© 2011 ROMTEC INC. ALL RIGHTS RESERVED. THESE PLANS AND DRAWINGS MAY NOT BE REPRODUCED, ADAPTED, OR FURTHER DISTRIBUTED, AND NO COMPONENTS MAY BE CONSTRUCTED FROM THESE PLANS, WITHOUT WRITTEN PERMISSION OF ROMTEC, INC.

DRAWING SECURITY IS ASSURED AND CREATED AT 1:1 AND FIT TO THE SHEET. DO NOT SCALE THIS DRAWING.

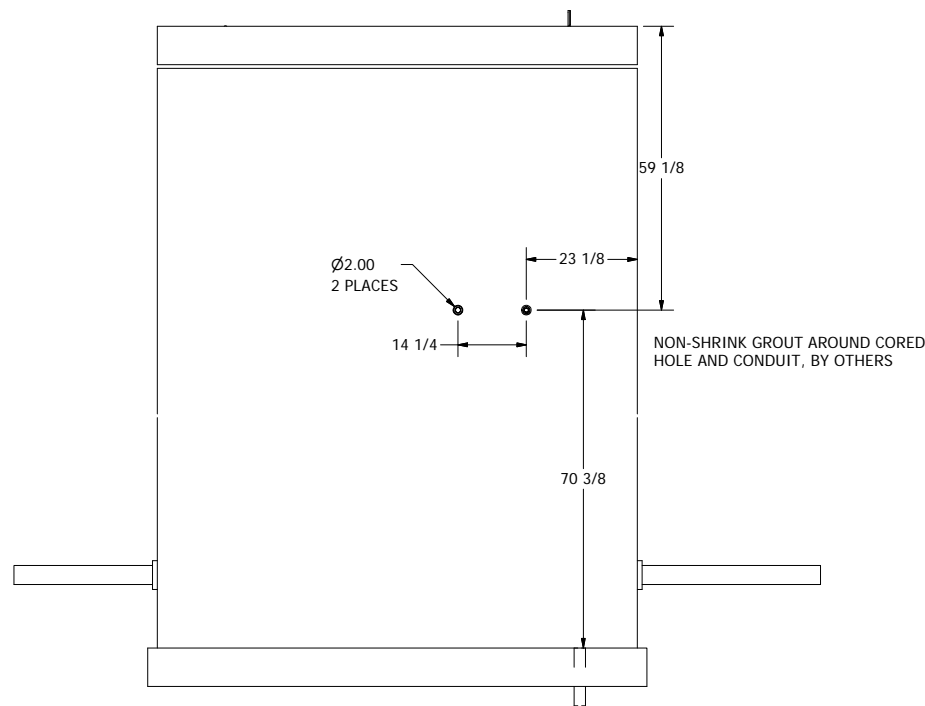
REV	DESCRIPTION	DATE	APPROV
3	REVISED CRANE BASE	10/16/12	AD
2	REVISED PER 7/30/12 COMMENTS	8/13/12	AD
1	COMPONENT DRAWING	03/26/12	AM
REV			

**ROMTEC UTILITIES**  
 18240 NORTH BANK ROAD  
 ROSEBURG, OREGON 97470  
 (541) 496-9678  
 FAX (541) 496-0804

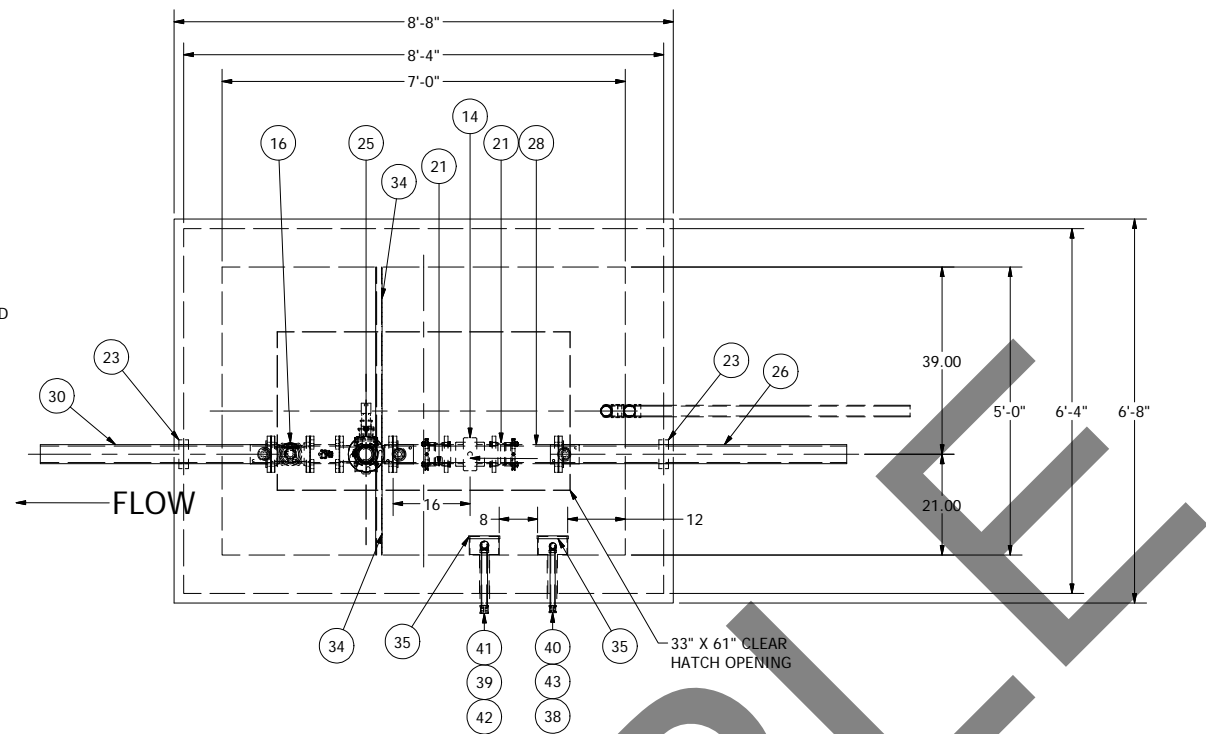
**WW-1 INDUSTRIAL WASTEWATER**  
**3" - 6' WET WELL ASSEMBLY**

SHEET  
**2 OF 4**

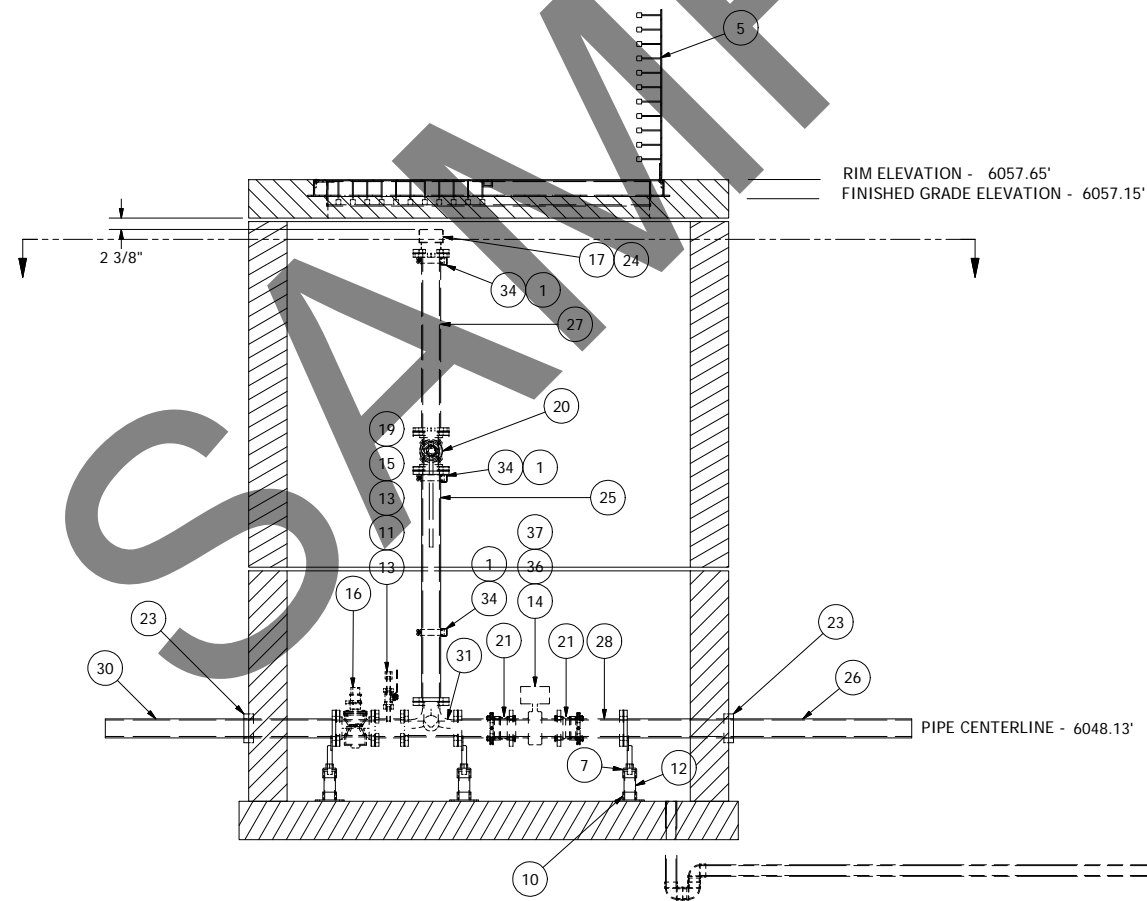
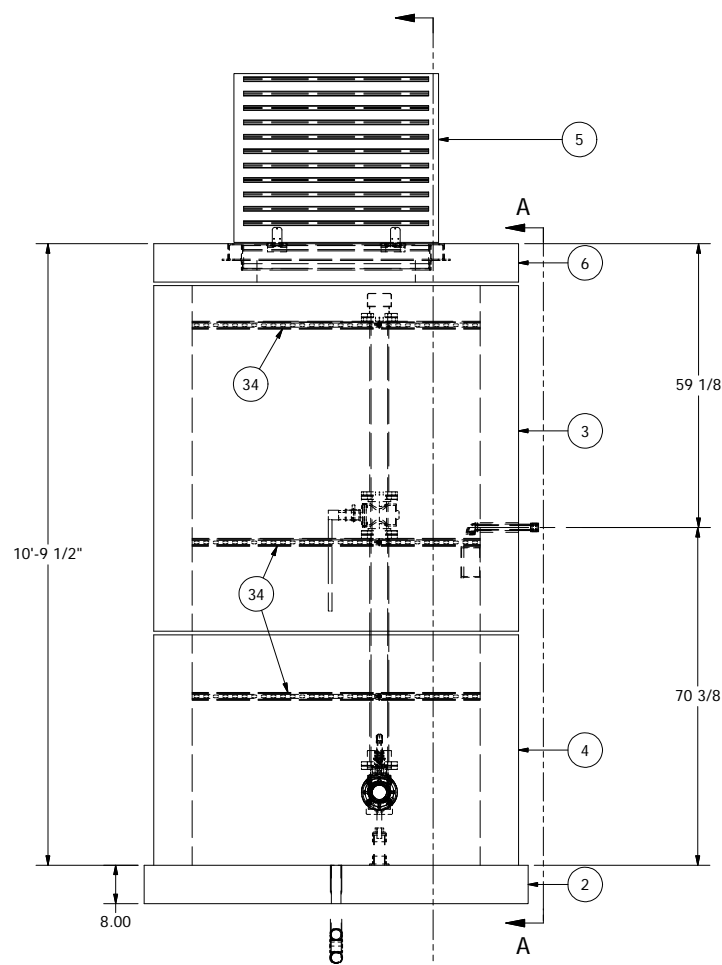
JOB NUMBER  
**RMTC  
 0000**



VIEW A-A  
CONDUIT PENETRATIONS



NOTE: VAULT TOP SLAB IS H-20 OCCASIONAL RATED



DRAIN BACK TO WET WELL:  
3" PLAIN HOLE IN VAULT  
(PROVIDED)  
2" PEE TRAP ON VAULT END  
WITH CHECK VALVE AT END OF  
PIPE IN WET WELL.  
(BY OTHERS) NOT ROMTEC UTILITIES

7' X 5' METER VAULT  
3" PIPING AND VALVES  
PUMPING PORT

NOTE: ALL DIMENSIONS AND ELEVATIONS SHOWN ARE NOMINAL DIMENSIONS. IT IS THE RESPONSIBILITY OF THE ON-SITE CONTRACTOR OR ROMTEC UTILITIES CUSTOMER (NOT ROMTEC UTILITIES) TO VERIFY THE ACCURACY OF ANY CRITICAL DIMENSIONS OR ELEVATIONS PRIOR TO SETTING OR INSTALLING ANY EQUIPMENT.

© 2011 ROMTEC INC. ALL RIGHTS RESERVED. THESE PLANS AND DRAWINGS MAY NOT BE REPRODUCED, ADAPTED, OR FURTHER DISTRIBUTED, AND NO COMPONENTS MAY BE CONSTRUCTED FROM THESE PLANS, WITHOUT WRITTEN PERMISSION OF ROMTEC, INC.

DRAWING GEOMETRY IS ACCURATE AND FIT TO THE SHEET. DO NOT SCALE THIS DRAWING.

REV	DESCRIPTION	DATE	APPROV
3	ADDED LONGER SPOOL TO PUMPING PORT	10/16/12	AD
2	REVISED PER 7/30/12 COMMENTS	8/17/12	AD
1	COMPONENT DRAWING	03/26/12	AM
REV			

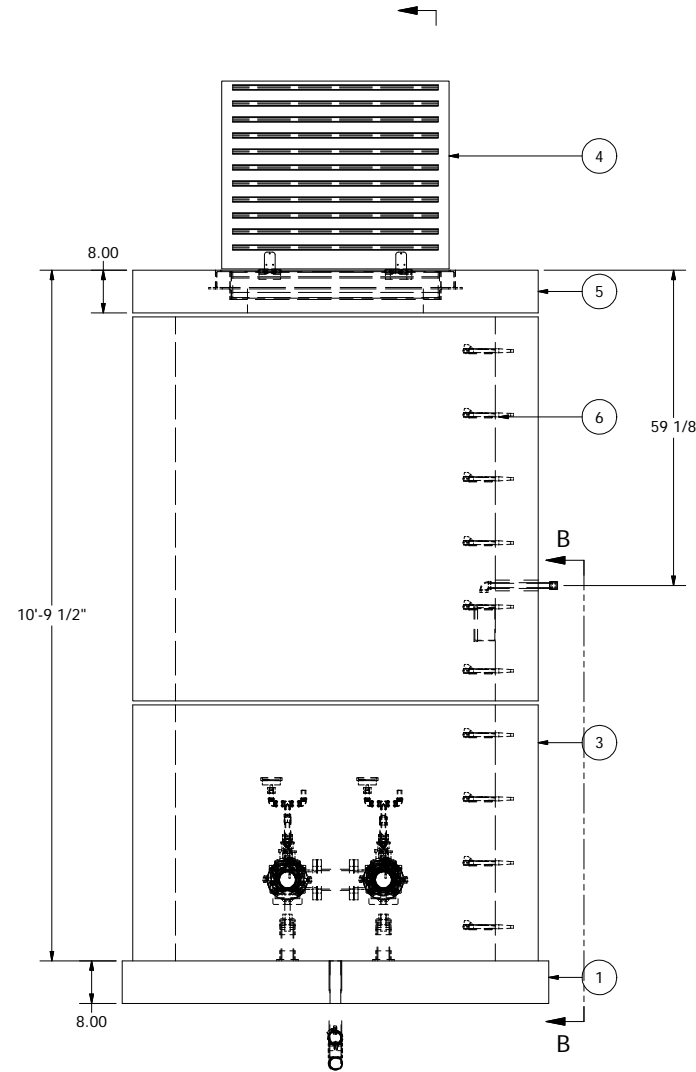
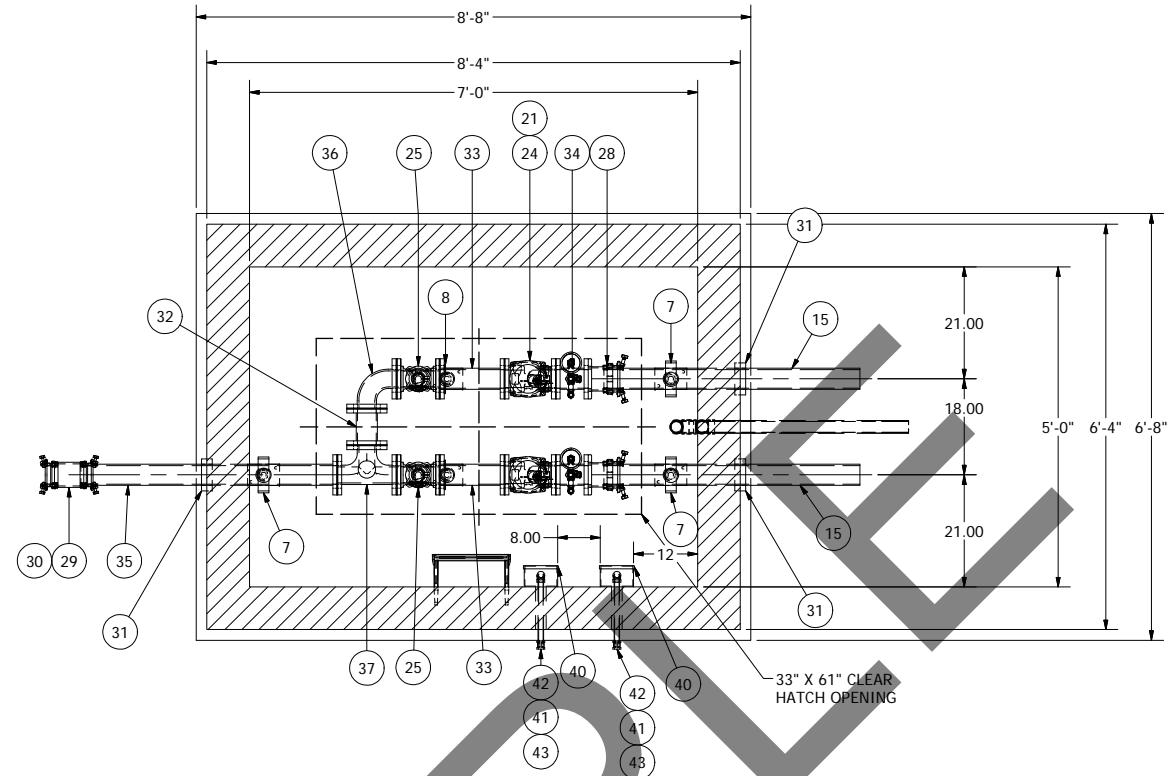
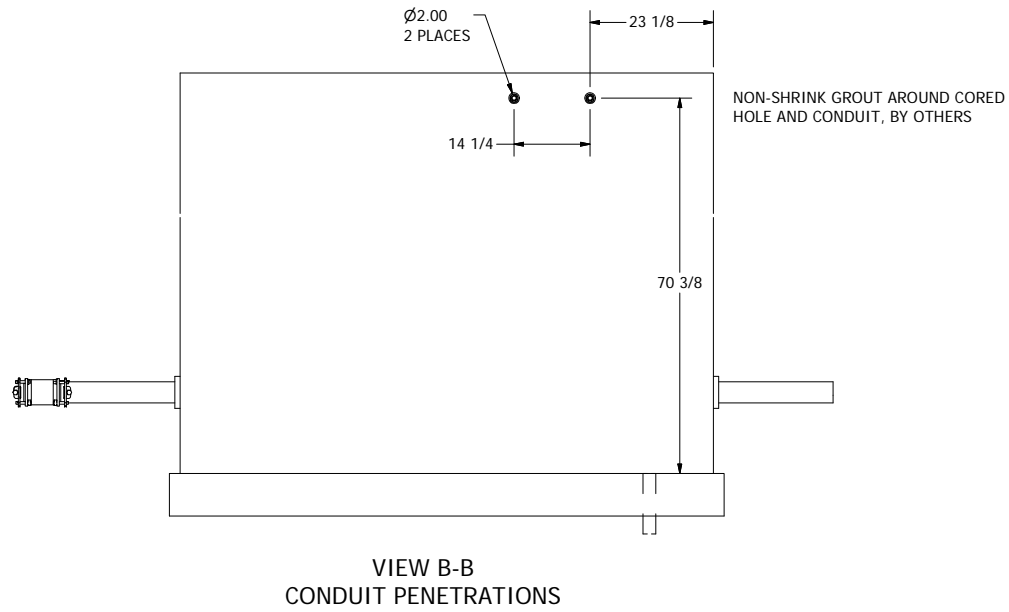
COMPONENT  
DRAWING

**ROMTEC UTILITIES**  
18240 NORTH BANK ROAD  
ROSEBURG, OREGON 97470  
(541) 496-9678  
FAX (541) 496-0804

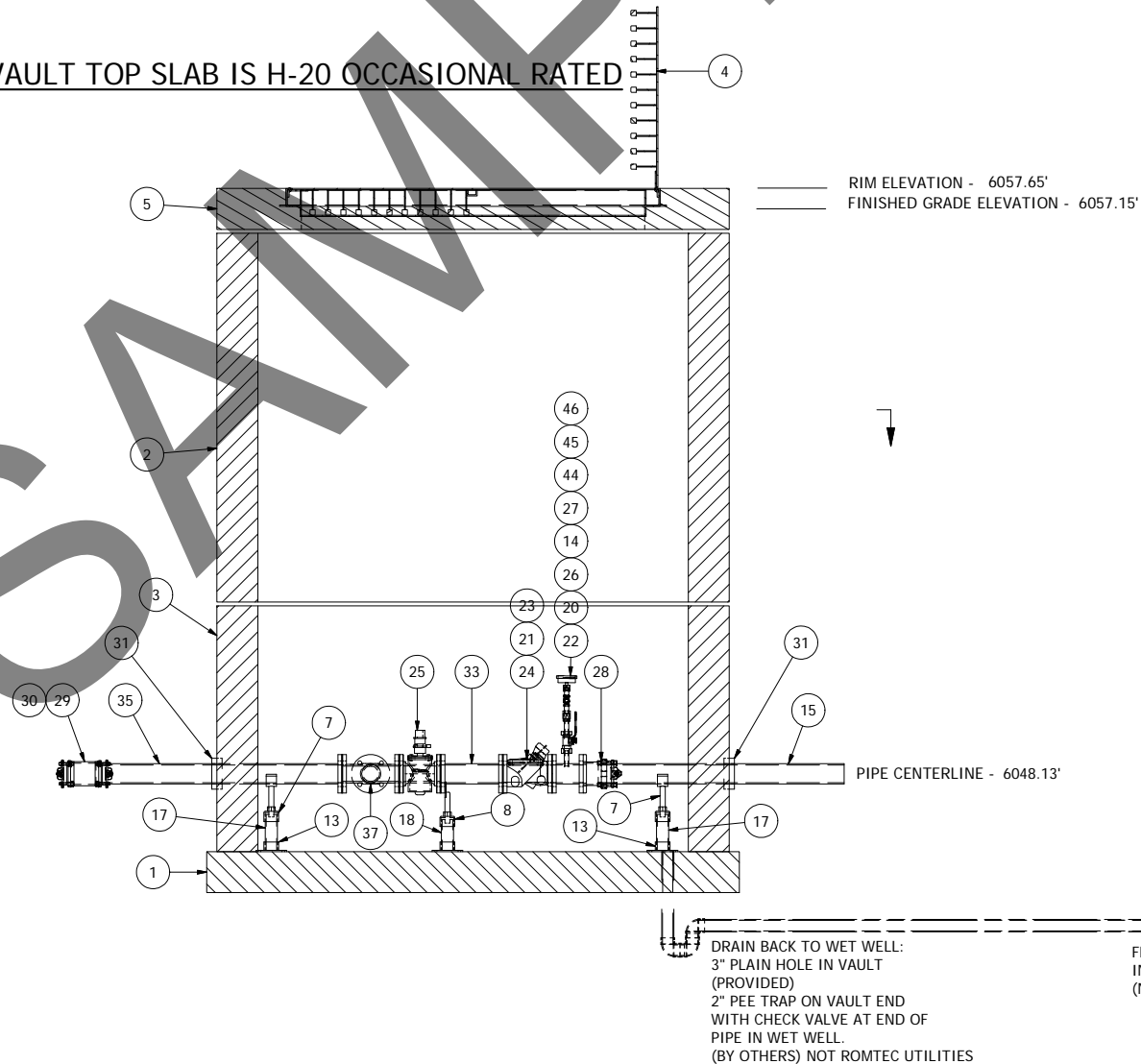
WW-1 INDUSTRIAL WASTEWATER  
3" - 7' X 5' METER VAULT

SHEET  
4 OF 4

JOB NUMBER  
RMTC  
0000



NOTE: VAULT TOP SLAB IS H-20 OCCASIONAL RATED



NOTE: ALL DIMENSIONS AND ELEVATIONS SHOWN ARE NOMINAL DIMENSIONS. IT IS THE RESPONSIBILITY OF THE ON-SITE CONTRACTOR OR ROMTEC UTILITIES CUSTOMER (NOT ROMTEC UTILITIES) TO VERIFY THE ACCURACY OF ANY CRITICAL DIMENSIONS OR ELEVATIONS PRIOR TO SETTING OR INSTALLING ANY EQUIPMENT.

7' X 5' VALVE VAULT  
3" PIPING AND VALVES

© 2011 ROMTEC INC. ALL RIGHTS RESERVED. THESE PLANS AND DRAWINGS MAY NOT BE REPRODUCED, ADAPTED, OR FURTHER DISTRIBUTED, AND NO COMPONENTS MAY BE CONSTRUCTED FROM THESE PLANS, WITHOUT WRITTEN PERMISSION OF ROMTEC, INC.

DRAWING GEOMETRY IS ACCURATE AND CREATED AT 1:1 AND FIT TO THE SHEET. DO NOT SCALE THIS DRAWING.

REV	DESCRIPTION	DATE	APPROV
2	REVISED PER 7/30/12 COMMENTS	8/10/12	AD
1	COMPONENT DRAWING	03/26/12	AJI
REV			

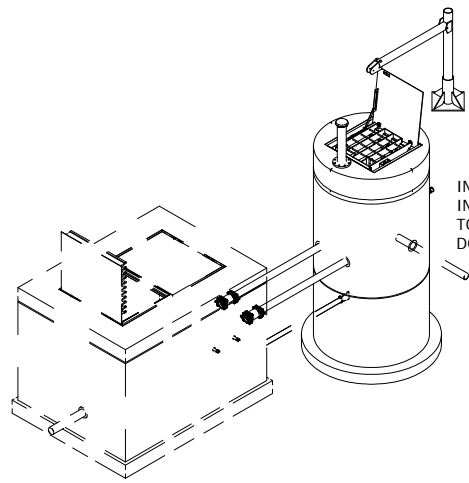
COMPONENT DRAWING

**ROMTEC UTILITIES**  
18240 NORTH BANK ROAD  
ROSEBURG, OREGON 97470  
(541) 496-9678  
FAX (541) 496-0804

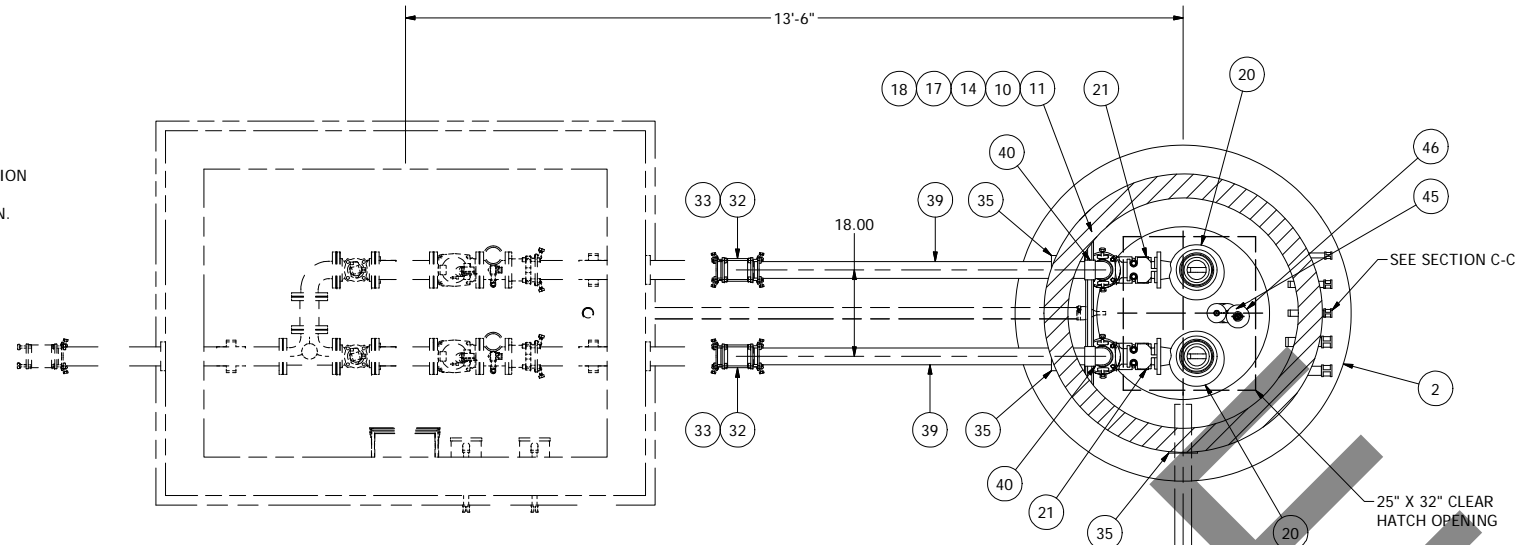
WWW-1 INDUSTRIAL WASTEWATER  
3" - VALVE VAULT

SHEET  
3 OF 4

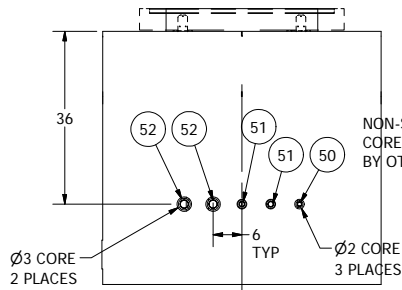
JOB NUMBER  
RMTC  
0000



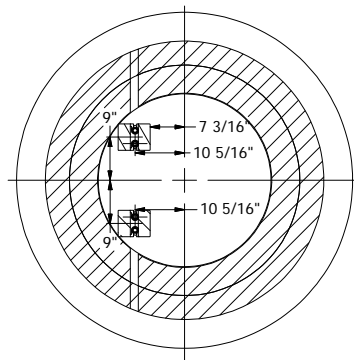
INFLUENT SEWER (BY OTHERS)  
INVERT ELEVATION AND LOCATION  
TO BE DETERMINED IN FEILD  
DO NOT CONSTRUCT AS SHOWN.



VALVE VAULT ASSEMBLY  
SEE SHEET 2

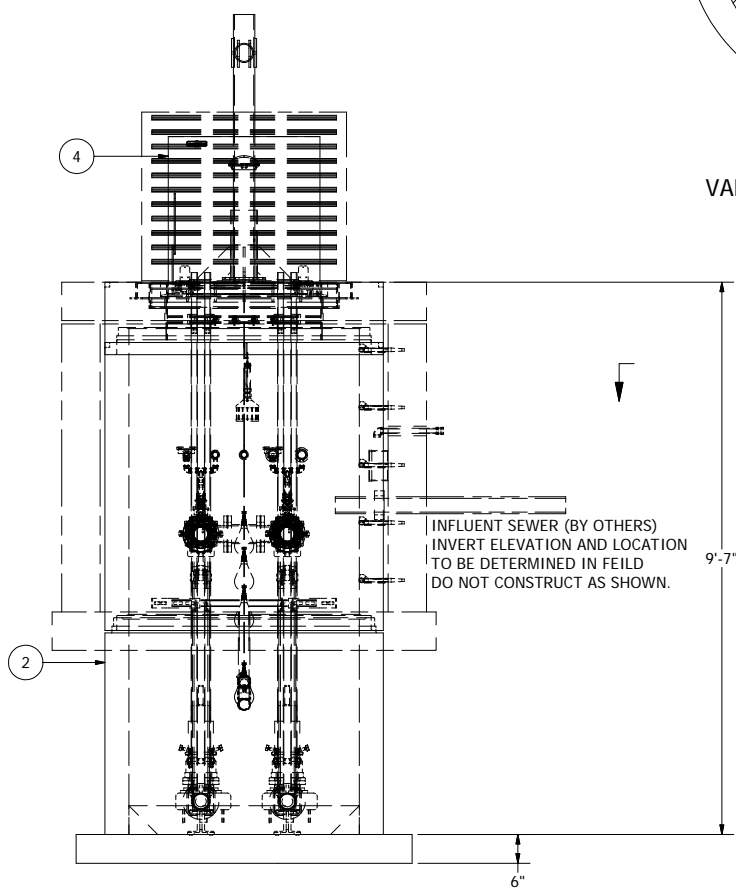


SECTION C-C  
CONDUIT PENETRATION

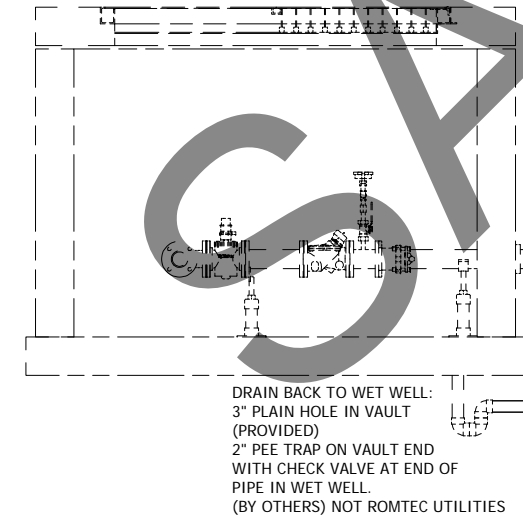


NOTE: WET WELL TOP SLAB IS H-20 OCCASIONAL TRAFFIC RATED

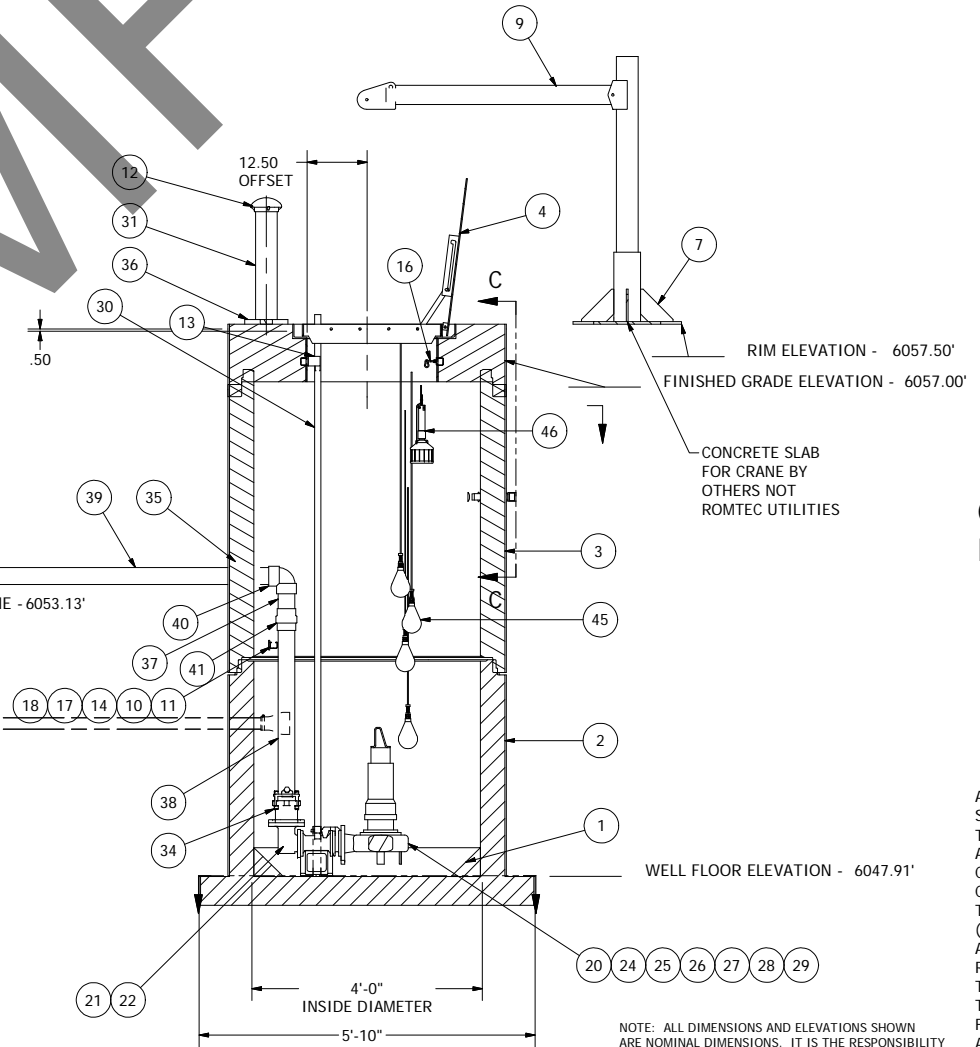
VALVE VAULT ASSEMBLY  
SEE SHEET 2



INFLUENT SEWER (BY OTHERS)  
INVERT ELEVATION AND LOCATION  
TO BE DETERMINED IN FEILD  
DO NOT CONSTRUCT AS SHOWN.



DRAIN BACK TO WET WELL:  
3" PLAIN HOLE IN VAULT  
(PROVIDED)  
2" PEE TRAP ON VAULT END  
WITH CHECK VALVE AT END OF  
PIPE IN WET WELL.  
(BY OTHERS) NOT ROMTEC UTILITIES



RIM ELEVATION - 6057.50'  
FINISHED GRADE ELEVATION - 6057.00'

CONCRETE SLAB  
FOR CRANE BY  
OTHERS NOT  
ROMTEC UTILITIES

WELL FLOOR ELEVATION - 6047.91'

INTERIOR AND EXTERIOR  
COATINGS, ARE BY OTHERS,  
NOT ROMTEC UTILITIES

ALL MATERIALS SHOWN ON THIS SHEET WILL BE SUPPLIED BY ROMTEC UTILITIES AND DELIVERED TO THE SITE AFTER THE HOLE HAS BEEN EXCAVATED AND SHORED. THE CONTRACTOR SHALL SUPPLY A CRANE OF SUFFICIENT SIZE TO LOWER ALL THE CONCRETE PIECES INTO THE HOLE SAFELY. THE CONTRACTOR SHALL INSTALL THE WET WELL (AND VALVE VAULT AND METERING VAULT IF APPLICABLE). ROMTEC UTILITIES WILL PROVIDE A REPRESENTATIVE FOR TECHNICAL ASSISTANCE ON THE DAY OF INSTALLATION TO ANSWER ANY QUESTIONS THAT MAY ARISE. THE CONTRACTOR IS RESPONSIBLE FOR ALL PLUMBING AND ELECTRICAL CONNECTIONS AND INSTALLATION. ITEMS NOTED AS "BY OTHERS" WILL BE PROVIDED AND INSTALLED BY THE CONTRACTOR. ROMTEC UTILITIES WILL NOT INSTALL ANY OF THE COMPONENTS SHOWN ON THIS PAGE.

© 2011 ROMTEC INC. ALL RIGHTS RESERVED. THESE PLANS AND DRAWINGS MAY NOT BE REPRODUCED, ADAPTED, OR FURTHER DISTRIBUTED, AND NO COMPONENTS MAY BE CONSTRUCTED FROM THESE PLANS, WITHOUT WRITTEN PERMISSION OF ROMTEC, INC.

NOTE: ALL DIMENSIONS AND ELEVATIONS SHOWN ARE NOMINAL DIMENSIONS. IT IS THE RESPONSIBILITY OF THE ON-SITE CONTRACTOR OR ROMTEC UTILITIES CUSTOMER (NOT ROMTEC UTILITIES) TO VERIFY THE ACCURACY OF ANY CRITICAL DIMENSIONS OR ELEVATIONS PRIOR TO SETTING OR INSTALLING ANY EQUIPMENT.

DRAWING GEOMETRY IS ACCURATE AND CREATED AT 1:1 AND FIT TO THE SHEET. DO NOT SCALE THIS DRAWING.

REV	DESCRIPTION	DATE	APPROV
2	REVISED PER 7/30/12 COMMENTS	8-15-12	AD
1	COMPONENT DRAWING	03/27/12	AM
0	DATE	03/27/12	AM

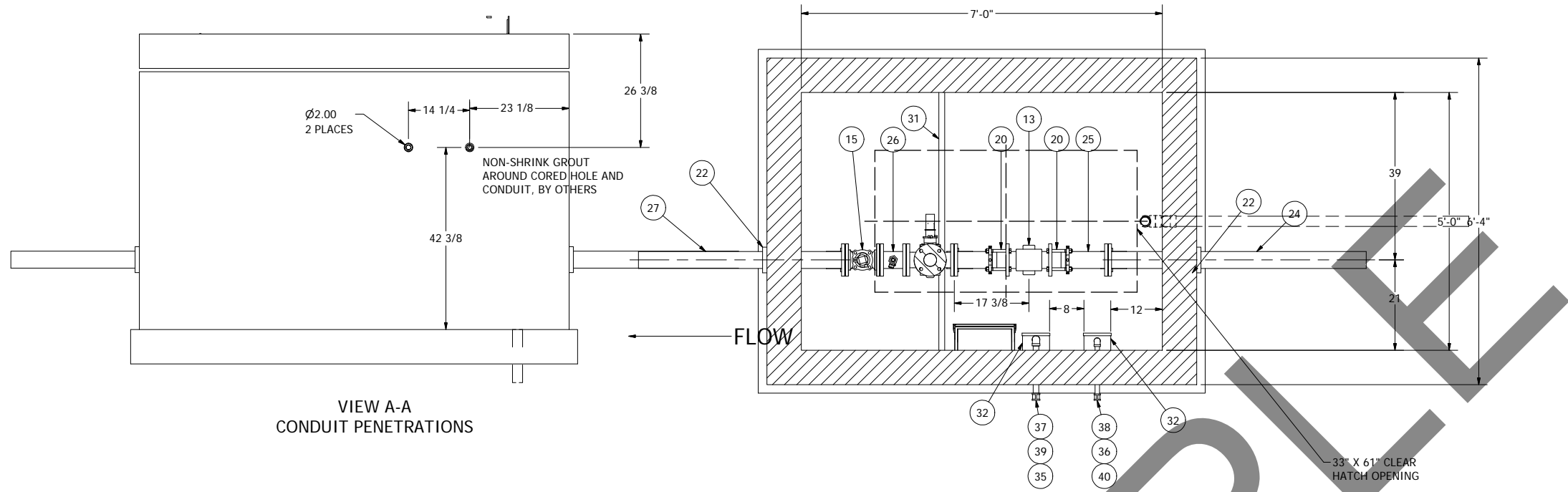
COMPONENT  
DRAWING

**ROMTEC UTILITIES**  
18240 NORTH BANK ROAD  
ROSEBURG, OREGON 97470  
(541) 496-9678  
FAX (541) 496-0804

IWW-3 - ROUNDHOUSE  
3" - 4' DIA WET WELL

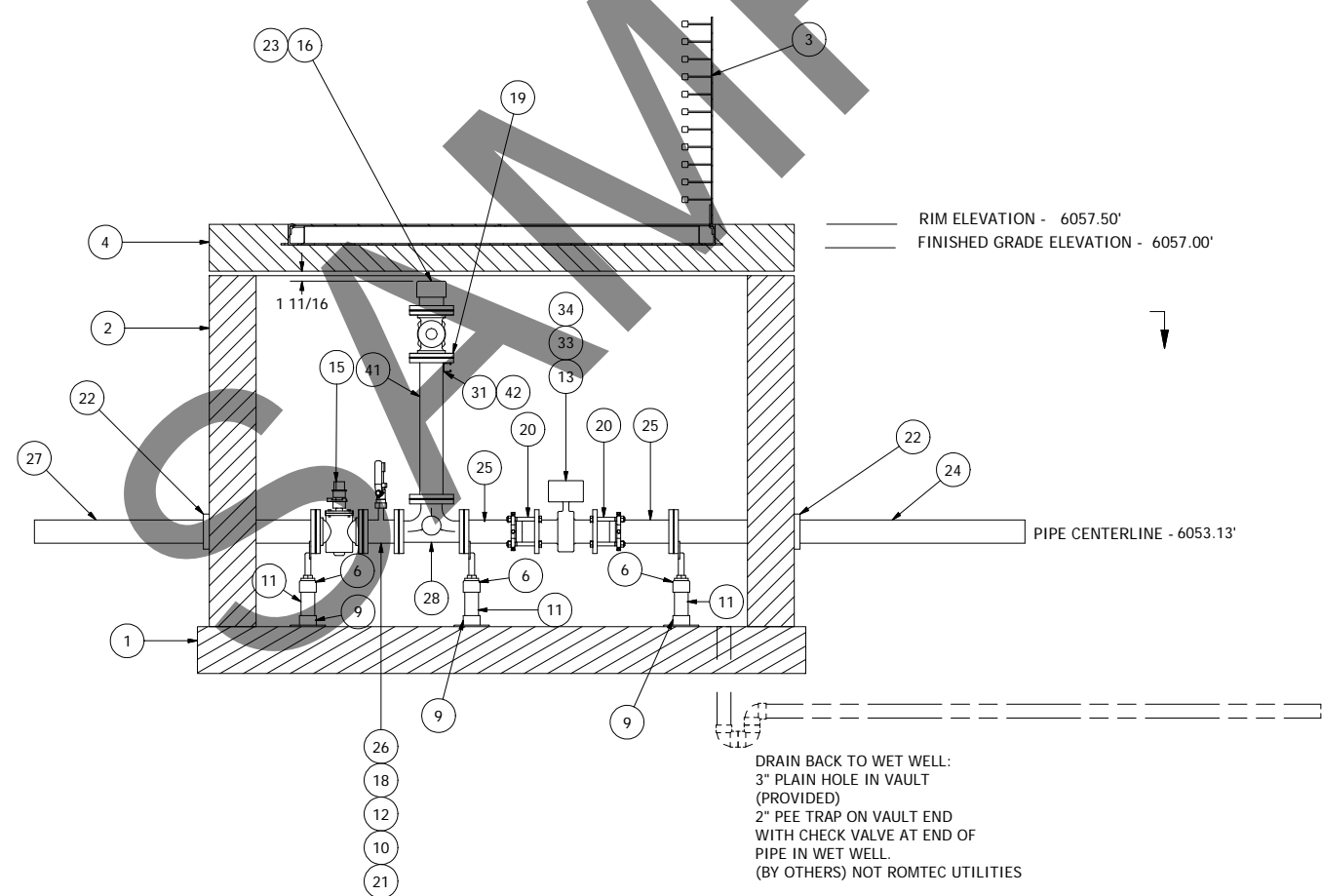
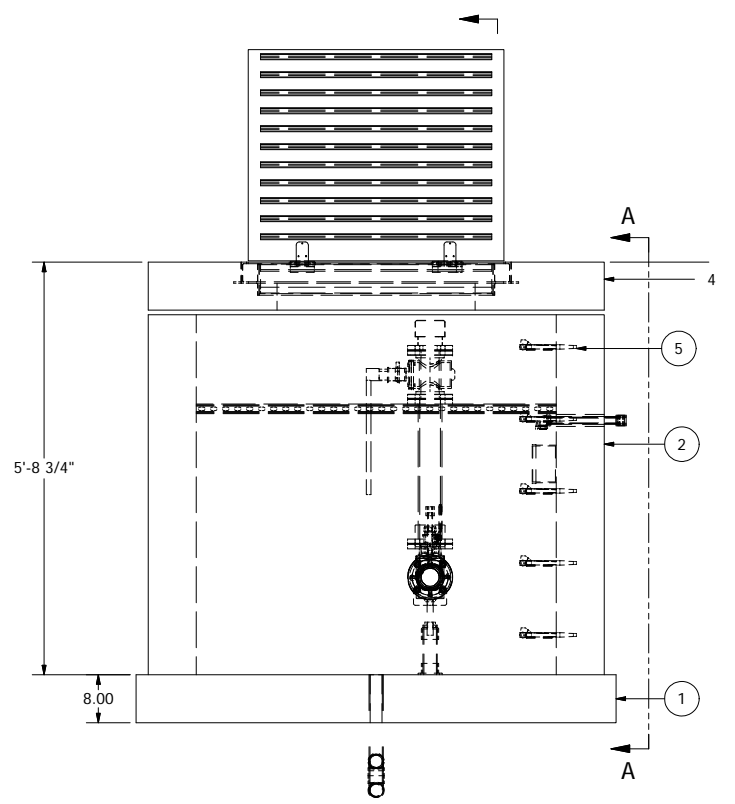
SHEET  
2 OF 4  
JOB NUMBER  
RMTC  
0000





VIEW A-A  
CONDUIT PENETRATIONS

NOTE: VAULT TOP SLAB IS H-20 OCCASIONAL RATED



7' X 5' METER VAULT  
3" PIPING AND VALVES  
PUMPING PORT

© 2011 ROMTEC INC. ALL RIGHTS RESERVED. THESE PLANS AND DRAWINGS MAY NOT BE REPRODUCED, ADAPTED, OR FURTHER DISTRIBUTED, AND NO COMPONENTS MAY BE CONSTRUCTED FROM THESE PLANS, WITHOUT WRITTEN PERMISSION OF ROMTEC, INC.

NOTE: ALL DIMENSIONS AND ELEVATIONS SHOWN ARE NOMINAL DIMENSIONS. IT IS THE RESPONSIBILITY OF THE ON-SITE CONTRACTOR OR ROMTEC UTILITIES CUSTOMER (NOT ROMTEC UTILITIES) TO VERIFY THE ACCURACY OF ANY CRITICAL DIMENSIONS OR ELEVATIONS PRIOR TO SETTING OR INSTALLING ANY EQUIPMENT.

DRAWING GEOMETRY IS ACCURATE AND CREATED AT 1:1 AND FIT TO THE SHEET. DO NOT SCALE THIS DRAWING.

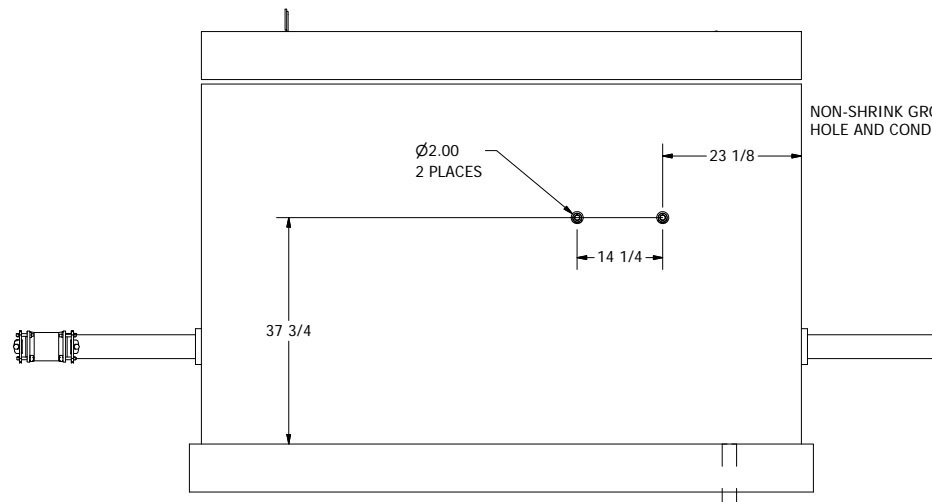
COMPONENT DRAWING

**ROMTEC UTILITIES**  
18240 NORTH BANK ROAD  
ROSEBURG, OREGON 97470  
(541) 496-9678  
FAX (541) 496-0804

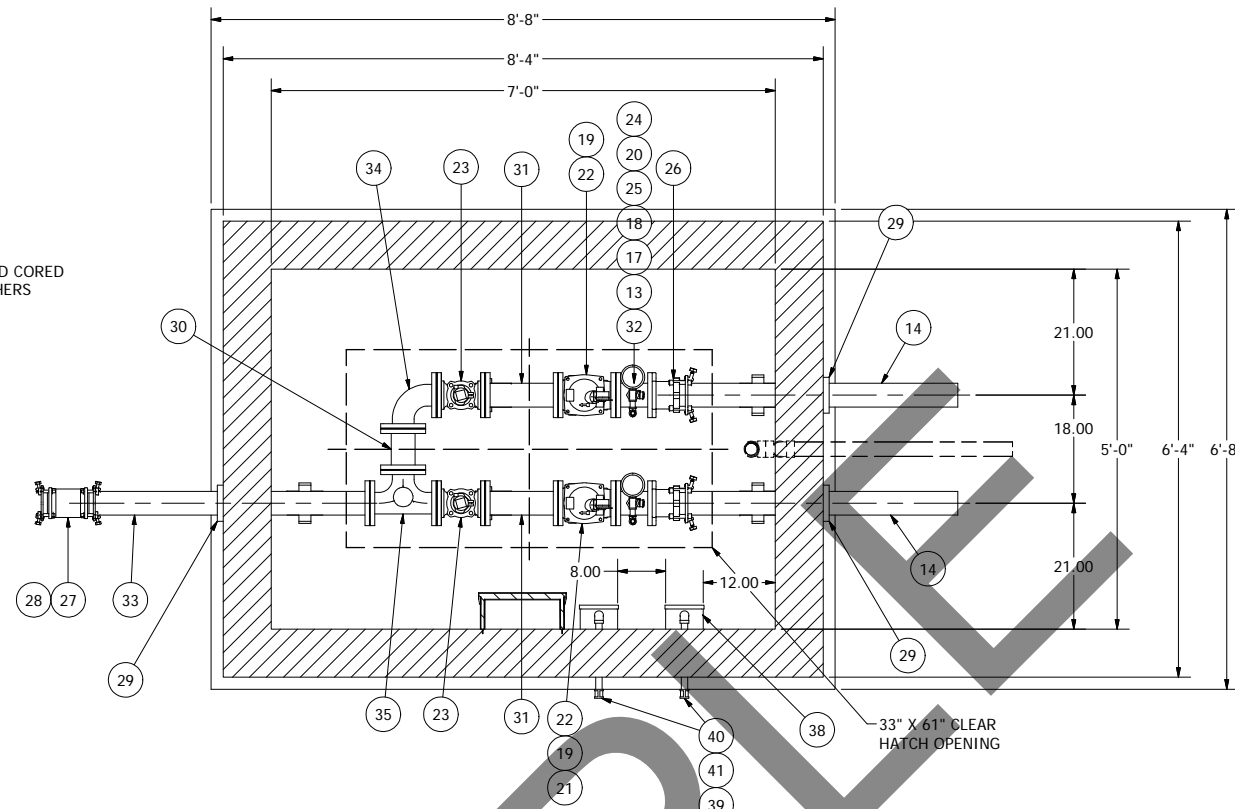
IWW-3 ROUNDHOUSE  
3" - 7' X 5' METER VAULT

SHEET  
4 OF 4  
JOB NUMBER  
RMTC  
0000

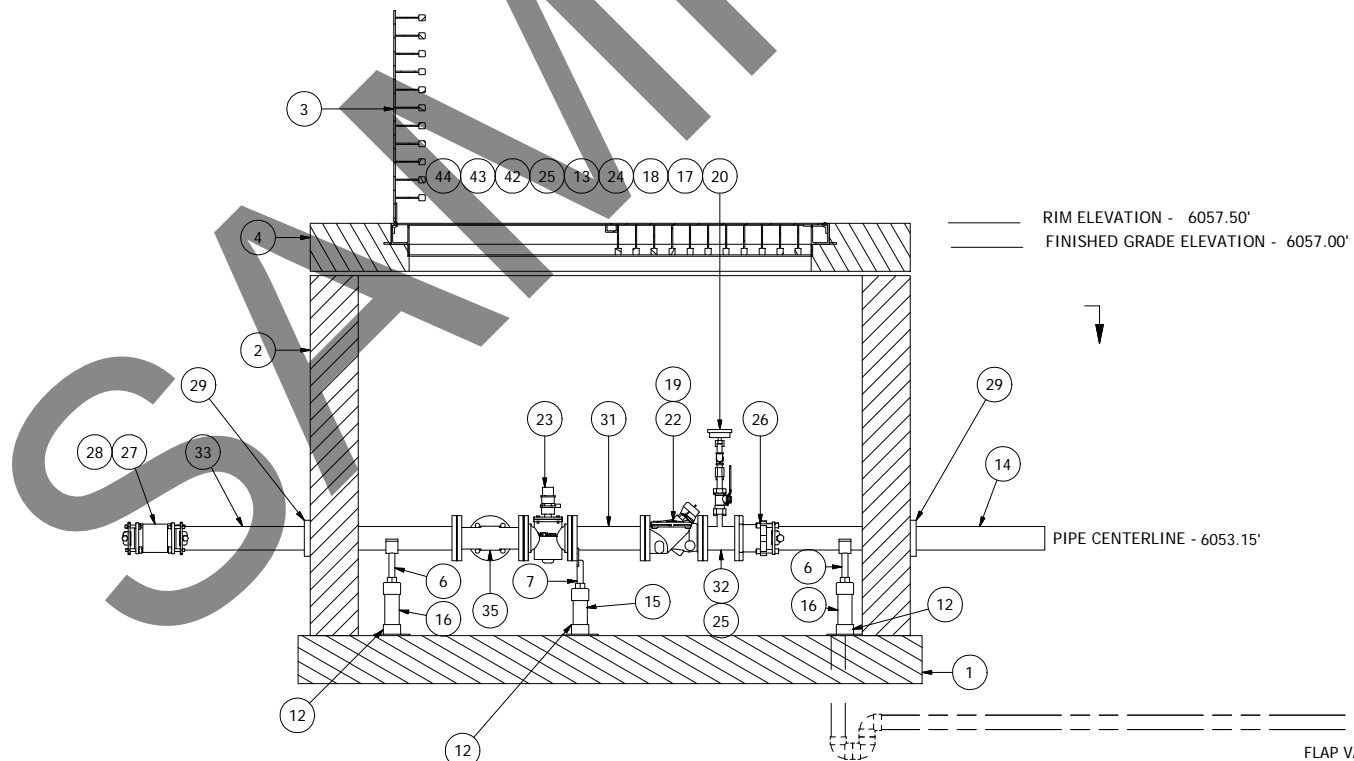
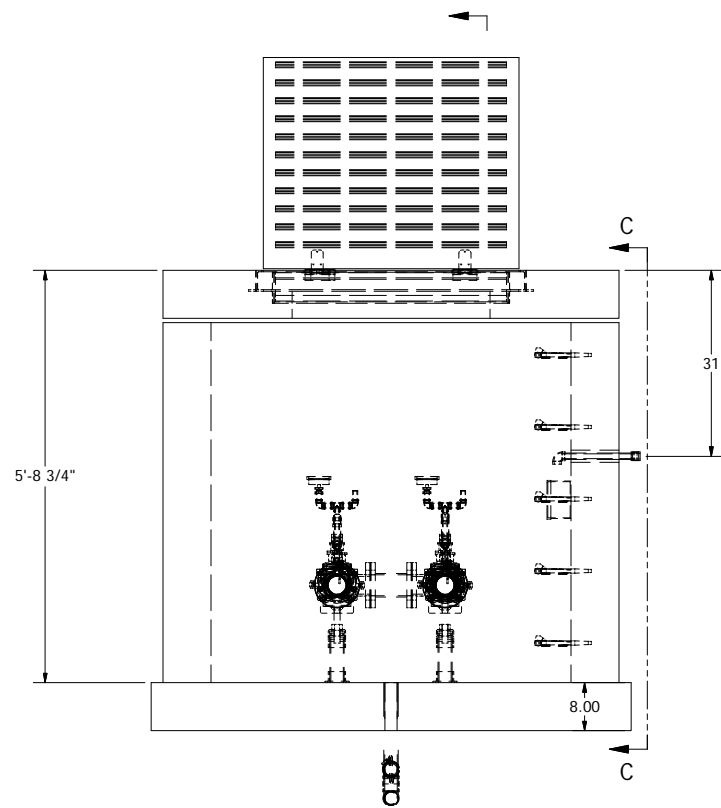
REV	DESCRIPTION	DATE	APPROV
4	ADDED LONGER SPOOL TO PUMPING PORT	10/16/12	AD
3	CORRECTED ELEV. TYPO	8/27/12	AD
2	REVISED PER 7/30/12 COMMENTS	8/20/12	AD
1	COMPONENT DRAWING	03/27/12	AMJ



VIEW C-C  
CONDUIT PENETRATIONS



NOTE: VAULT TOP SLAB IS H-20 OCCASIONAL RATED



NOTE: ALL DIMENSIONS AND ELEVATIONS SHOWN ARE NOMINAL DIMENSIONS. IT IS THE RESPONSIBILITY OF THE ON-SITE CONTRACTOR OR ROMTEC UTILITIES CUSTOMER (NOT ROMTEC UTILITIES) TO VERIFY THE ACCURACY OF ANY CRITICAL DIMENSIONS OR ELEVATIONS PRIOR TO SETTING OR INSTALLING ANY EQUIPMENT.

7' X 5' VALVE VAULT  
3" PIPING AND VALVES

DRAWING GEOMETRY IS ACCURATE AND CREATED AT 1:1 AND FIT TO THE SHEET. DO NOT SCALE THIS DRAWING.

REV	DESCRIPTION	DATE	APPROV
2	REVIS PER 7/30/12 COMMENTS	8/20/12	AD
1	COMPONENT DRAWING	03/26/12	AJI
REV			

COMPONENT  
DRAWING

**ROMTEC UTILITIES**  
18240 NORTH BANK ROAD  
ROSEBURG, OREGON 97470  
(541) 496-9678  
FAX (541) 496-0804

IWW-3 ROUNDHOUSE  
3" - 7' X 5' VALVE VAULT

SHEET  
3 OF 4

JOB NUMBER  
RMTC  
0000