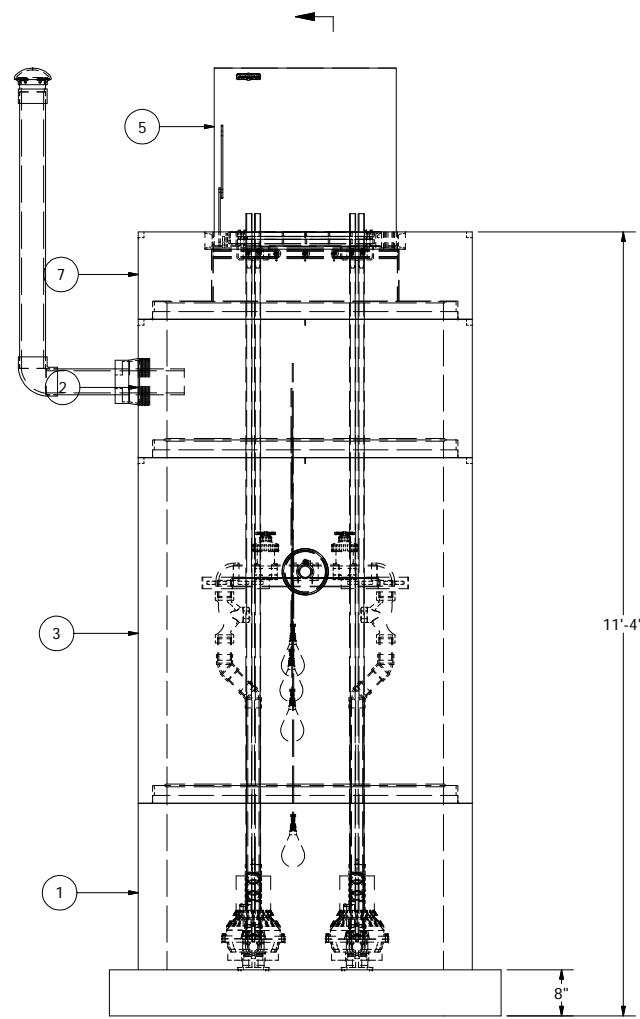
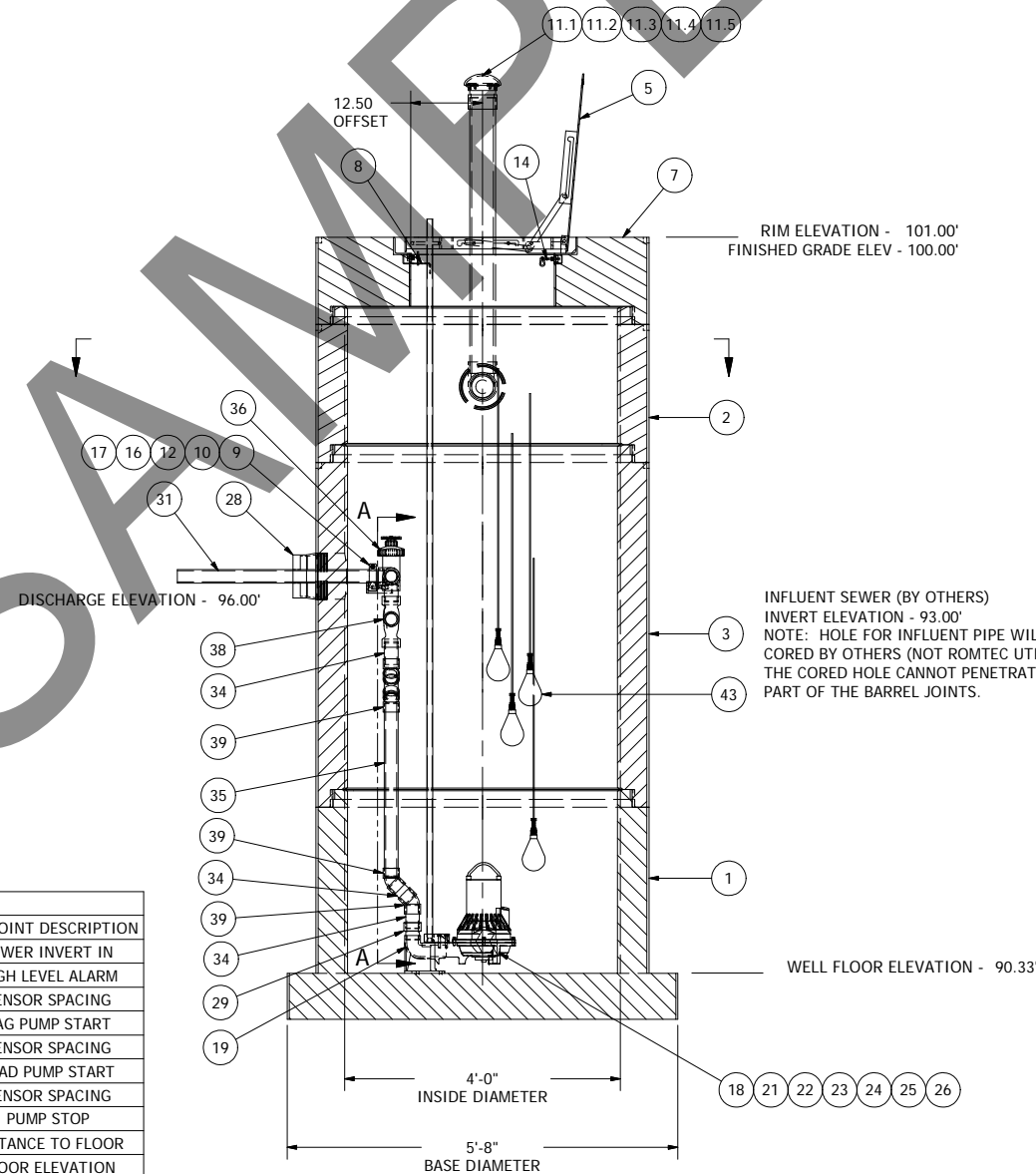


NOTE: WET WELL TOP SLAB IS PEDESTRIAN RATED



SENSOR AND ELEVATION TABLE		
LEVEL ELEVATION	DISTANCE BETWEEN POINTS	SET POINT DESCRIPTION
93.00		SEWER INVERT IN
92.58		HIGH LEVEL ALARM
92.33	0.25	SENSOR SPACING LAG PUMP START
92.08	0.25	SENSOR SPACING LEAD PUMP START
91.58	0.50	SENSOR SPACING PUMP STOP
90.33	1.25	DISTANCE TO FLOOR FLOOR ELEVATION



INFLUENT SEWER (BY OTHERS)
INVERT ELEVATION - 93.00'
NOTE: HOLE FOR INFLUENT PIPE WILL BE
CORED BY OTHERS (NOT ROMTEC UTILITIES).
THE CORED HOLE CANNOT PENETRATE ANY
PART OF THE BARREL JOINTS.

NOTE: ALL DIMENSIONS AND ELEVATIONS SHOWN
ARE NOMINAL DIMENSIONS. IT IS THE RESPONSIBILITY
OF THE ON-SITE CONTRACTOR OR ROMTEC UTILITIES
CUSTOMER (NOT ROMTEC UTILITIES) TO VERIFY THE
ACCURACY OF ANY CRITICAL DIMENSIONS OR ELEVATIONS
PRIOR TO SETTING OR INSTALLING ANY EQUIPMENT.

4' DIAMETER WET WELL 2" DISCHARGE PIPING MP3085 FLYGT PUMPS

ALL MATERIALS SHOWN ON THIS SHEET WILL BE
SUPPLIED BY ROMTEC UTILITIES AND DELIVERED TO
THE SITE AFTER THE HOLE HAS BEEN EXCAVATED
AND SHORED. THE CONTRACTOR SHALL SUPPLY A
CRANE OF SUFFICIENT SIZE TO LOWER ALL THE
CONCRETE PIECES INTO THE HOLE SAFELY. THE
CONTRACTOR SHALL INSTALL THE WET WELL
(AND VALVE VAULT AND METERING VAULT IF
APPLICABLE). ROMTEC UTILITIES WILL PROVIDE A
REPRESENTATIVE FOR TECHNICAL ASSISTANCE ON
THE DAY OF INSTALLATION TO ANSWER ANY QUESTIONS
THAT MAY ARISE. THE CONTRACTOR IS RESPONSIBLE
FOR ALL PLUMBING AND ELECTRICAL CONNECTIONS
AND INSTALLATION. ITEMS NOTED AS "BY OTHERS"
WILL BE PROVIDED AND INSTALLED BY THE CONTRACTOR.
ROMTEC UTILITIES WILL NOT INSTALL ANY OF THE
COMPONENTS SHOWN ON THIS PAGE.

© 2013 ROMTEC INC. ALL RIGHTS RESERVED. THESE
PLANS AND DRAWINGS MAY NOT BE REPRODUCED,
ADAPTED, OR FURTHER DISTRIBUTED, AND NO
COMPONENTS MAY BE CONSTRUCTED FROM THESE
PLANS, WITHOUT WRITTEN PERMISSION OF ROMTEC, INC.

REV	DESCRIPTION	DATE	APPROV
2	UPDATED	08/06/10	NA
1	COMPONENT DRAWING		AM
0			

VERIFIED SCALE
BAR IS ONE INCH ON
ORIGINAL DRAWING
1"
IF NOT ONE INCH ON
THIS SHEET, ADJUST
SCALE ACCORDINGLY

DSN - AM
DIRN - AM
CKD -
DATE - 08/06/10

REVISION HISTORY

COMPONENT
DRAWING

**ROMTEC
UTILITIES**
18240 NORTH BANK ROAD
ROSEBURG, OREGON 97470
(541) 496-9678
FAX (541) 496-0804

US CELLULAR SPORT PARK
2" - 4' DIA WET WELL

SHEET
1 OF 1
JOB NUMBER
RMTC
0000