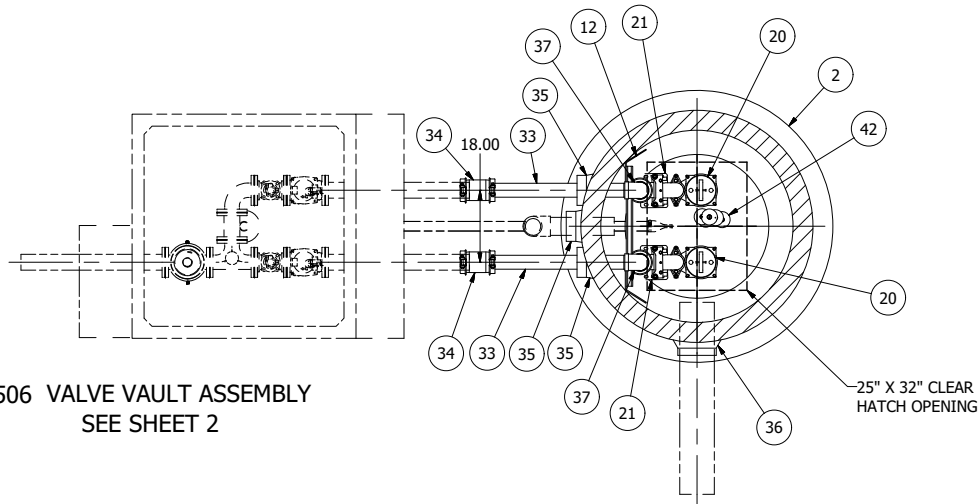
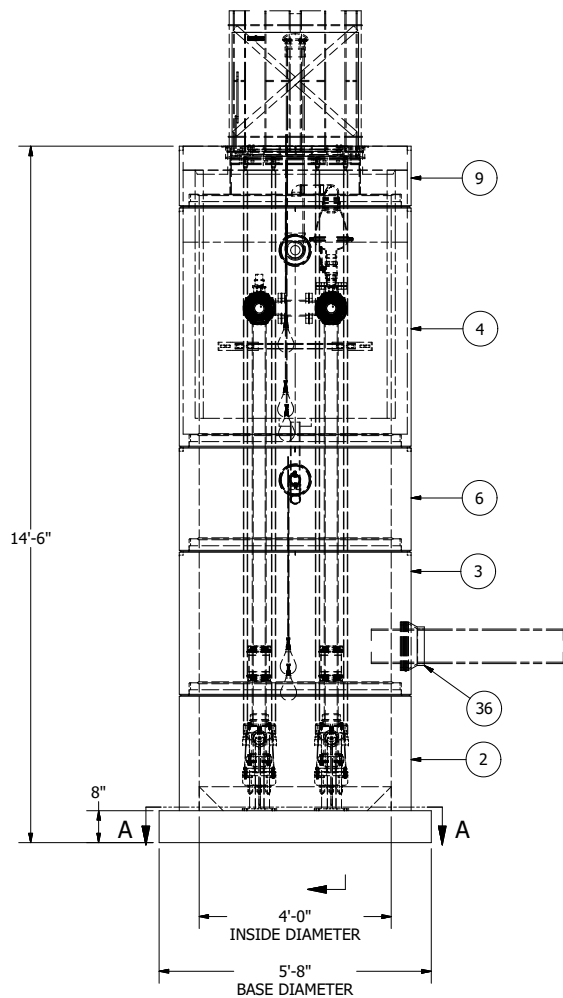


SENSOR AND ELEVATION TABLE		
LEVEL ELEVATION	DISTANCE BETWEEN POINTS	SET POINT DESCRIPTION
337.25		SEWER INVERT IN
337.25		HIGH LEVEL ALARM
	0.42	SENSOR SPACING
336.83		LAG PUMP START
	0.50	SENSOR SPACING
336.33		LEAD PUMP START
	1.00	SENSOR SPACING
335.33		PUMP STOP
	1.12	DISTANCE TO FLOOR
334.21		FLOOR ELEVATION

506 VALVE VAULT ASSEMBLY
SEE SHEET 2

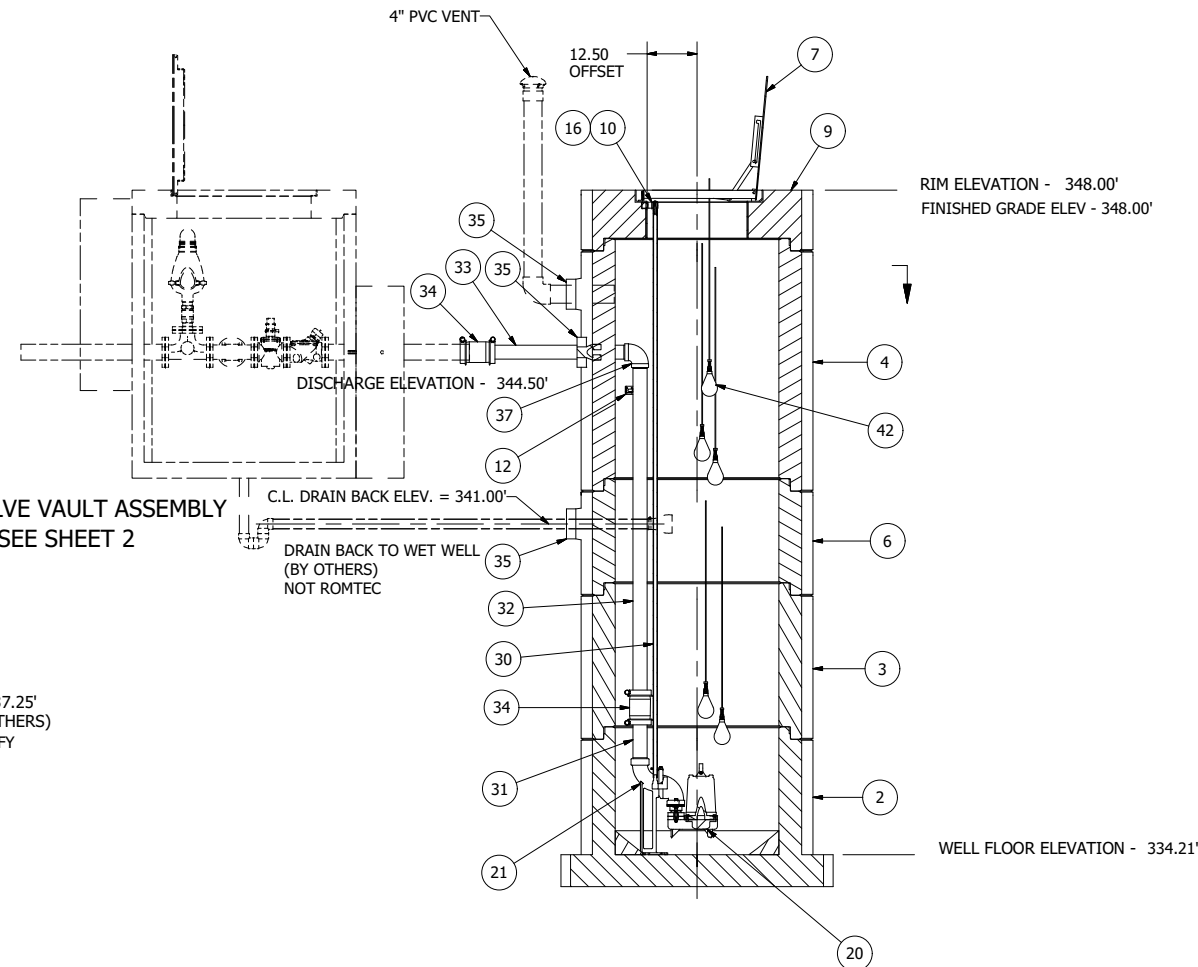


NOTE: WET WELL TOP SLAB IS PEDESTRIAN RATED



INVERT ELEVATION - 337.25'
INFLUENT SEWER (BY OTHERS)
8\"/>

506 VALVE VAULT ASSEMBLY
SEE SHEET 2



NOTE: ALL DIMENSIONS AND ELEVATIONS SHOWN ARE NOMINAL DIMENSIONS. IT IS THE RESPONSIBILITY OF THE ON-SITE CONTRACTOR OR ROMTEC UTILITIES CUSTOMER (NOT ROMTEC UTILITIES) TO VERIFY THE ACCURACY OF ANY CRITICAL DIMENSIONS OR ELEVATIONS PRIOR TO SETTING OR INSTALLING ANY EQUIPMENT.

4' DIAMETER WET WELL
3\"/>

ALL MATERIALS SHOWN ON THIS SHEET WILL BE SUPPLIED BY ROMTEC UTILITIES AND DELIVERED TO THE SITE AFTER THE HOLE HAS BEEN EXCAVATED AND SHORED. THE CONTRACTOR SHALL SUPPLY A CRANE OF SUFFICIENT SIZE TO LOWER ALL THE CONCRETE PIECES INTO THE HOLE SAFELY. THE CONTRACTOR SHALL INSTALL THE WET WELL (AND VALVE VAULT AND METERING VAULT IF APPLICABLE). ROMTEC UTILITIES WILL PROVIDE A REPRESENTATIVE FOR TECHNICAL ASSISTANCE ON THE DAY OF INSTALLATION TO ANSWER ANY QUESTIONS THAT MAY ARISE. THE CONTRACTOR IS RESPONSIBLE FOR ALL PLUMBING AND ELECTRICAL CONNECTIONS AND INSTALLATION. ITEMS NOTED AS "BY OTHERS" WILL BE PROVIDED AND INSTALLED BY THE CONTRACTOR. ROMTEC UTILITIES WILL NOT INSTALL ANY OF THE COMPONENTS SHOWN ON THIS PAGE.

UDELL ENGINEERING
BRIAN VANDETTA

WOOD'S MOBILE RV PARK
3\"/>

SHEET
1 OF 2

JOB NUMBER
RMTC
0000

ROMTEC
UTILITIES
18240 NORTH BANK ROAD
ROSEBURG, OREGON 97470
(541) 496-9678
FAX (541) 496-0804

COMPONENT
DRAWING

VERIFY SCALE
BAR IS ONE INCH ON
ORIGINAL DRAWING
0 1"

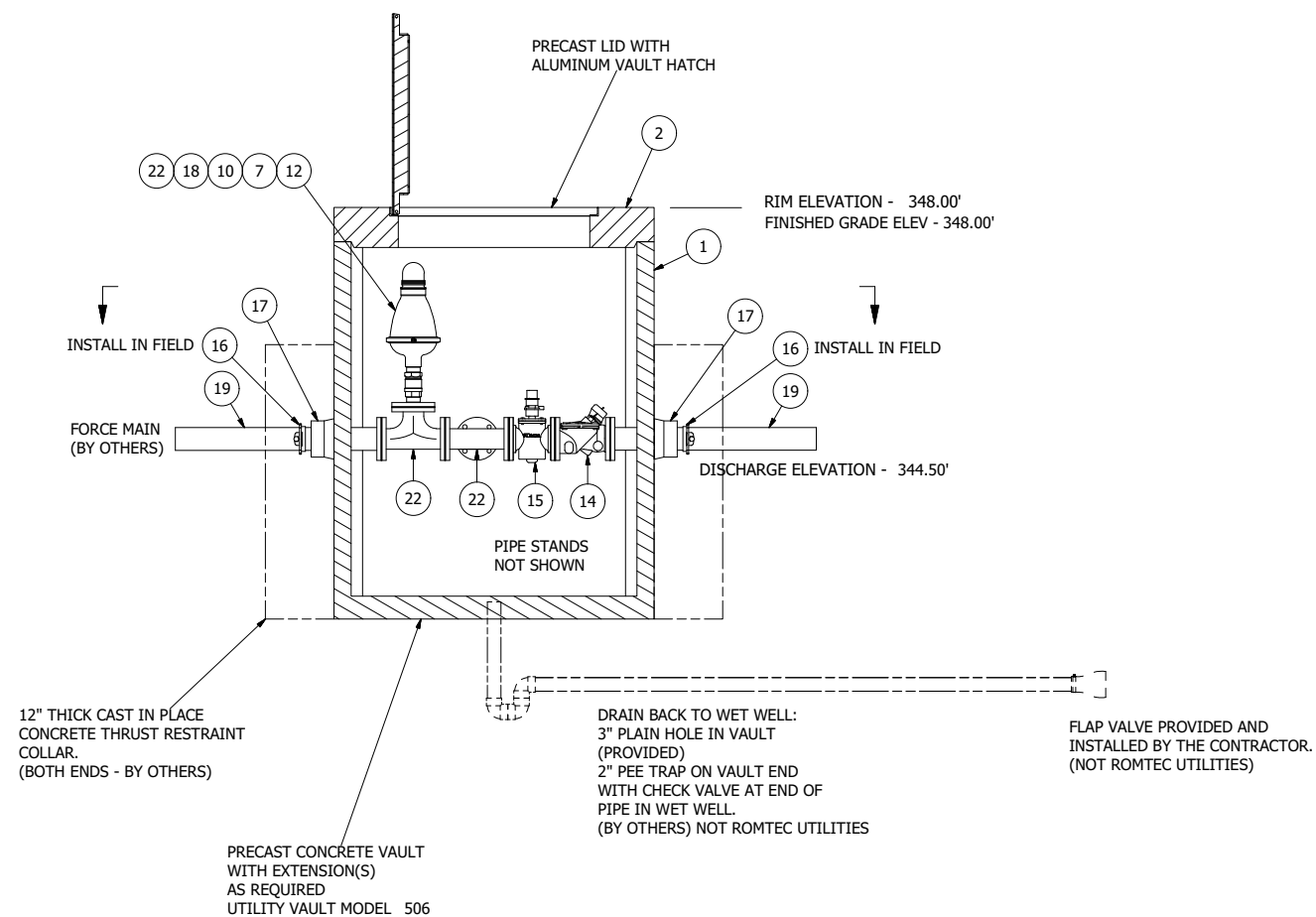
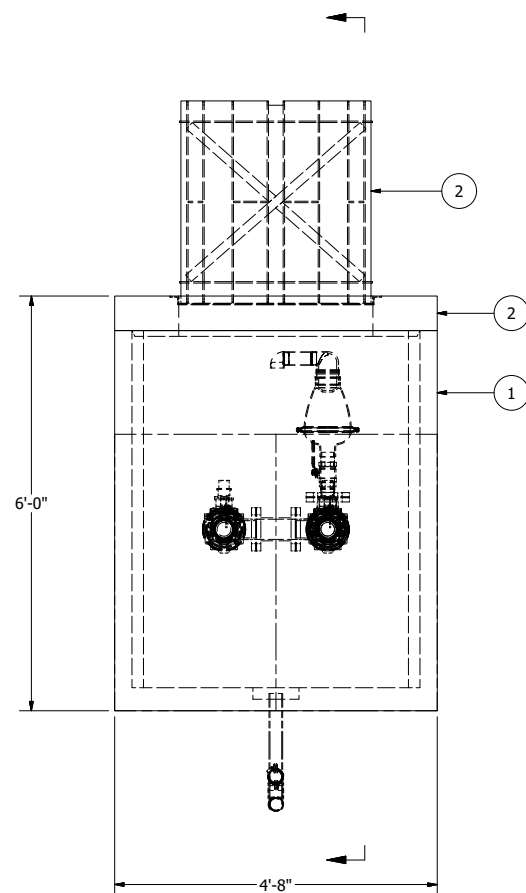
IF NOT ONE INCH ON
THIS SHEET ADJUST
SCALES ACCORDINGLY

DSN -
DRN - AM
CKD -
DATE - 02/08/10

REV
DESCRIPTION
1
DATE

REVISION HISTORY

4	AS BUILT	7/7/10	AD
3	UPDATED FOR PRODUCTION LAUNCH	5/25/10	AD
2	UPDATED PER COMMENTS FROM 05/14/10	05/18/10	AM
1	COMPONENT DRAWING	02/08/10	AM



NOTE: ALL DIMENSIONS AND ELEVATIONS SHOWN ARE NOMINAL DIMENSIONS. IT IS THE RESPONSIBILITY OF THE ON-SITE CONTRACTOR OR ROMTEC UTILITIES CUSTOMER (NOT ROMTEC UTILITIES) TO VERIFY THE ACCURACY OF ANY CRITICAL DIMENSIONS OR ELEVATIONS PRIOR TO SETTING OR INSTALLING ANY EQUIPMENT.

506 VALVE VAULT
3" PIPING AND VALVES
WITH ARI & SHUTOFF

0 ————— 1"

BAR IS ONE INCH ON
ORIGINAL DRAWING

IF NOT ONE INCH ON
THIS SHEET, ADJUST
SCALES ACCORDINGLY

COMPONENT DRAWING



ROSEBURG, OREGON 97470
(541) 496-9678
FAX (541) 496-0804

BRIAN VANDETTA

WOOD'S MOBILE RV PARK
3" - 506 VALVE VAULT

SHEET
OF 2

OB NUMBER
RMTC
0000

REV	DESCRIPTION	DATE	APPROV
1	COMPONENT DRAWING	02/08/10	AM
2	UPDATED PER COMMENTS DATED 3/14/10	03/16/10	AM