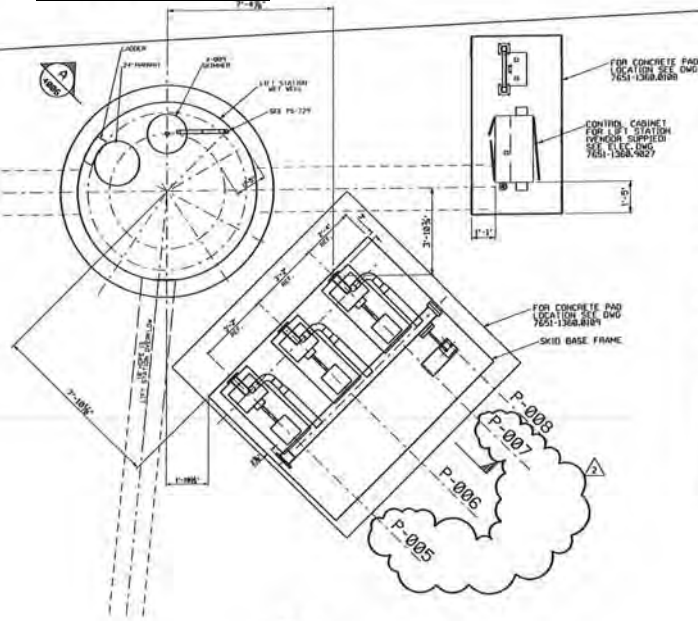




ROAD



PLAN

Electrical Classification Drawing 7651-1360.9070 shows the control panel (Item 37 as shown on this page), to be separate from the pumps on the skid. It also shows that the control panel, along with the Automatic Transfer Switch, will be mounted outside the Class 1 Division 2 area. The pumps on the skids will be located within the Class 1 Division 2 area. This control panel will need to be shipped separate from the skid and connected together on site as shown in the Electrical Area Classification Drawing.

NOTES:
 H SEE ENG. Dwg. 1360-010
 I SEE ENG. Dwg. 1360-011
 A SEE ENG. Dwg. 1360-012
 FOR DIMENSIONAL PIPING

ISSUED FOR CONSTRUCTION

THIS DOCUMENT IS OF THE DESIGN AND IS CONTAINED AND PROVIDED FOR THE USE OF THE USER. IT CONTAINS PROPRIETARY INFORMATION THAT IS UNCLASSIFIED FOR INFORMATION PURPOSES ONLY. CONTRACTORS SHALL NOT BE HELD RESPONSIBLE FOR THE USE OF THIS INFORMATION IN ANY MANNER. THE USER SHALL BE RESPONSIBLE FOR THE PROTECTION OF THIS INFORMATION AND SHALL NOT BE HELD RESPONSIBLE FOR THE PROTECTION OF THIS INFORMATION. THE USER SHALL BE RESPONSIBLE FOR THE PROTECTION OF THIS INFORMATION AND SHALL NOT BE HELD RESPONSIBLE FOR THE PROTECTION OF THIS INFORMATION.

REV	JOB	DESCRIPTION	DATE APPROVED	APPROVED	DATE	APPROVED	DATE	APPROVED	DATE	APPROVED	DATE
376A		REVISED PUMP NOS	5-18-12								
376B		RENDED HOLD ON LIFT STATION	5-18-12								
376C		ISSUE FOR CONSTRUCTION	4-26-12								

BAE SYSTEMS

LIFT STATION AREA 360 PLAN VIEW

DATE: 4/26/12 SCALE: 1"=10'-0" DRAWING NUMBER: [REDACTED]

REFERENCE DRAWINGS (7651-)