

PRELIMINARY SITE LAYOUT

BASED ON SITE PLANS RECEIVED 7-25-18

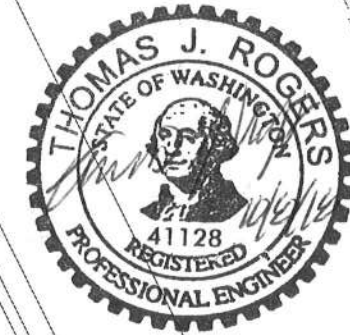
WET WELL DEPTH: 21.75'
 DISTANCE TO TERMINATION: 7' (FROM CENTER)

NOTE: CABLES TO BE TERMINATED IN APPROVED JUNCTION BOX OR CONTROL PANEL.

APPROX. CABLE LENGTH NEEDED: 35'
 PUMP CABLE LENGTH: 50'
 TRANSDUCER CABLE LENGTH: 40'
 FLOAT CABLE LENGTH: 40'

NOTE: SITE MATERIALS, DESIGN INFORMATION, AND SERVICES **NOT** SUPPLIED BY ROMTEC UTILITIES:

- GRADING
- WIRING AND CONDUIT
- FENCING AND PAVING
- SITE LIGHTING
- SITE UTILITIES (WATER, POWER, ETC)
- SCADA ANTENNA
- ALL ON-SITE INSTALLATION



VALVE VAULT
 (BY ROMTEC UTILITIES)
 (SEE SSDS FOR DETAILS)

8' DIA WET WELL
 DUPLEX FLYGT PUMPS
 (BY ROMTEC UTILITIES)
 (SEE SSDS FOR DETAILS)

7' DIA PRE-SED MANHOLE
 (BY OTHERS)

FORCE MAIN
 6" HDPE DR17 IPS
 (BY OTHERS)

JUNCTION BOX
 (BY ROMTEC UTILITIES)
 (SEE SSDS FOR DETAILS)

GENSET
 (BY ROMTEC UTILITIES)
 (SEE SSDS FOR DETAILS)

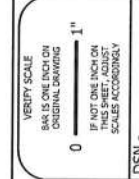
CONTROL BUILDING
 (BY ROMTEC, INC)

CONTROL PANEL, ATS, RTU,
 FMH, & INTERIOR LIGHTING
 (BY ROMTEC UTILITIES)
 (SEE SSDS FOR DETAILS)

CHEMFEED ODOR CONTROL
 (BY ROMTEC UTILITIES)
 (SEE SSDS FOR DETAILS)

DRAIN

© 2017 ROMTEC INC. ALL RIGHTS RESERVED. THESE PLANS AND DRAWINGS MAY NOT BE REPRODUCED, ADAPTED, OR FURTHER DISTRIBUTED, AND NO COMPONENTS MAY BE CONSTRUCTED FROM THESE PLANS, WITHOUT WRITTEN PERMISSION OF ROMTEC, INC.



REV	DESCRIPTION	DATE	APPROV
2	UPDATED PER 9-24-18 COMMENTS	10-1-18	KB
1	REARRANGED SITE LAYOUT	5-1-18	KB

ROMTEC UTILITIES
 18240 NORTH BANK ROAD
 ROSEBURG, OREGON 97470
 (541) 496-9678
 FAX (541) 496-0804

COLUMBIA PALISADES
 SITE LAYOUT

SHEET
 1 OF 1

JOB NUMBER
 RMTC
 0000