

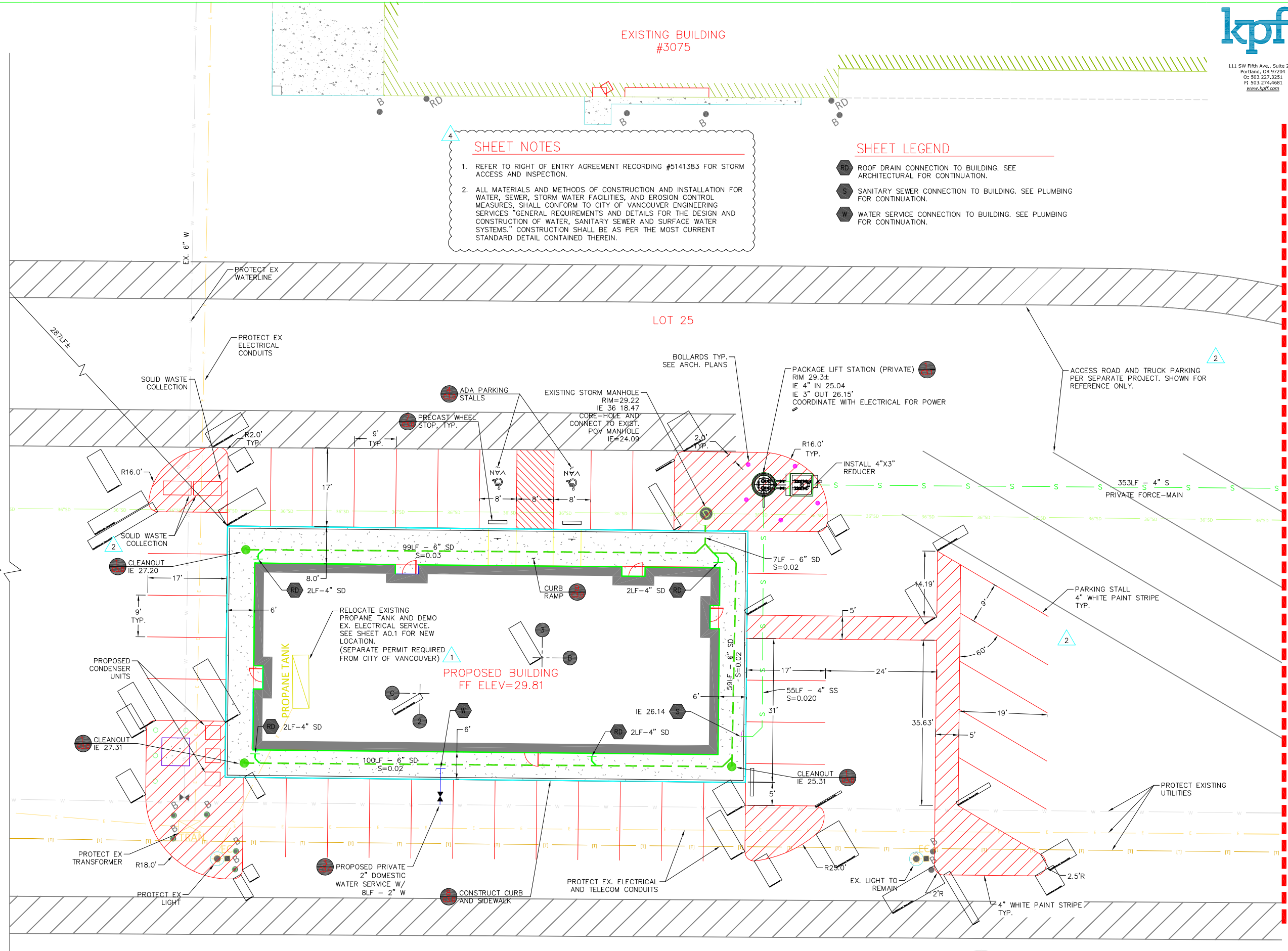
EXISTING BUILDING #3075

SHEET NOTES

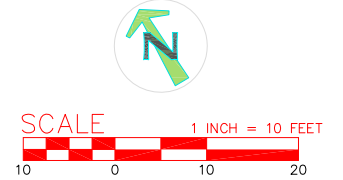
- REFER TO RIGHT OF ENTRY AGREEMENT RECORDING #5141383 FOR STORM ACCESS AND INSPECTION.
- ALL MATERIALS AND METHODS OF CONSTRUCTION AND INSTALLATION FOR WATER, SEWER, STORM WATER FACILITIES, AND EROSION CONTROL MEASURES, SHALL CONFORM TO CITY OF VANCOUVER ENGINEERING SERVICES "GENERAL REQUIREMENTS AND DETAILS FOR THE DESIGN AND CONSTRUCTION OF WATER, SANITARY SEWER AND SURFACE WATER SYSTEMS." CONSTRUCTION SHALL BE AS PER THE MOST CURRENT STANDARD DETAIL CONTAINED THEREIN.

SHEET LEGEND

- ROOF DRAIN CONNECTION TO BUILDING. SEE ARCHITECTURAL FOR CONTINUATION.
- SANITARY SEWER CONNECTION TO BUILDING. SEE PLUMBING FOR CONTINUATION.
- WATER SERVICE CONNECTION TO BUILDING. SEE PLUMBING FOR CONTINUATION.



STORMWATER QUALITY
 STORMWATER QUALITY IS PROVIDED BY AN EXISTING REGIONAL FACILITY. POST-DEVELOPMENT CONDITIONS WILL NOT RESULT IN ANY INCREASE IN IMPERVIOUS AREA.



MATCHLINE - SEE SHEET C1.1