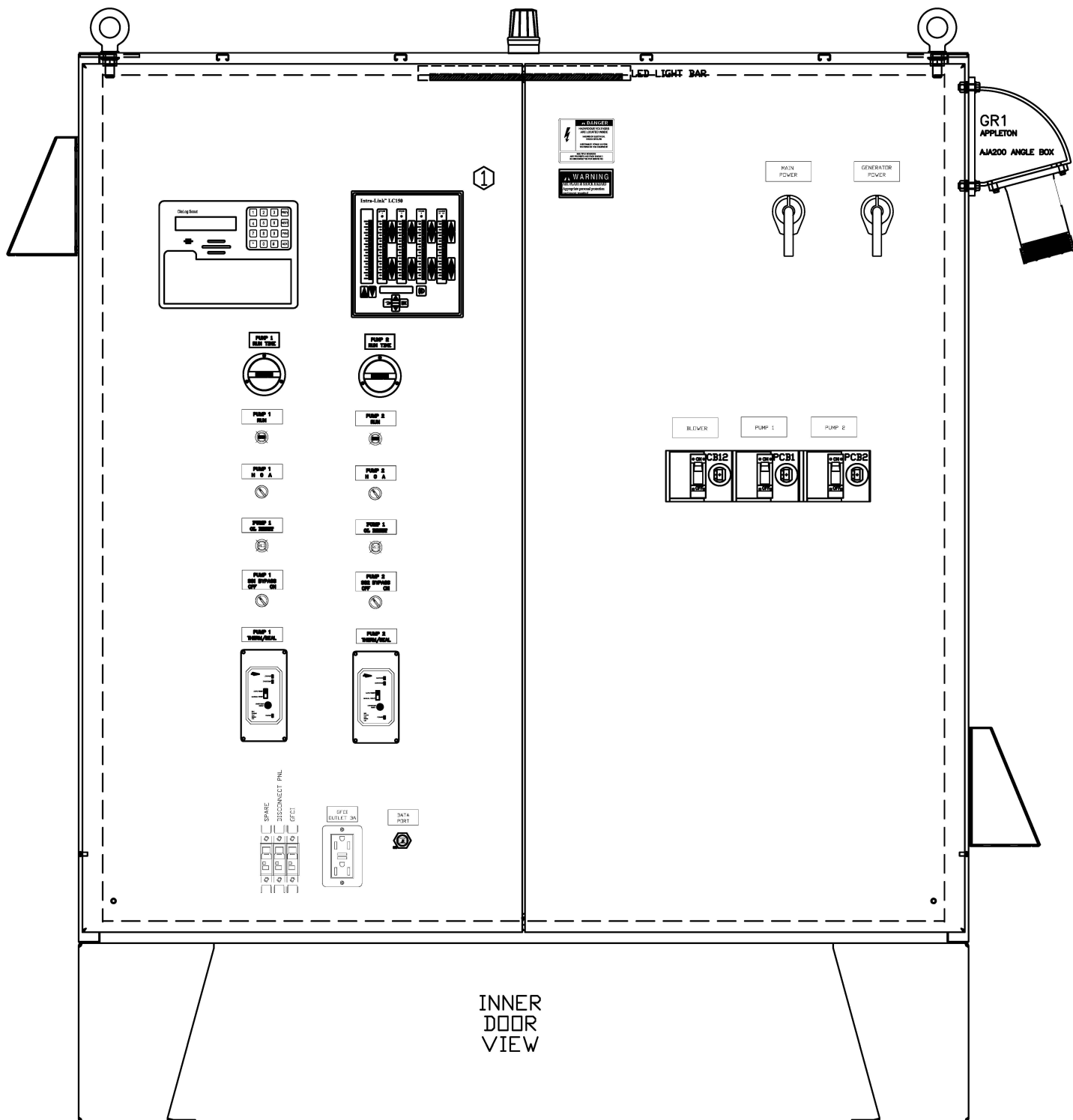
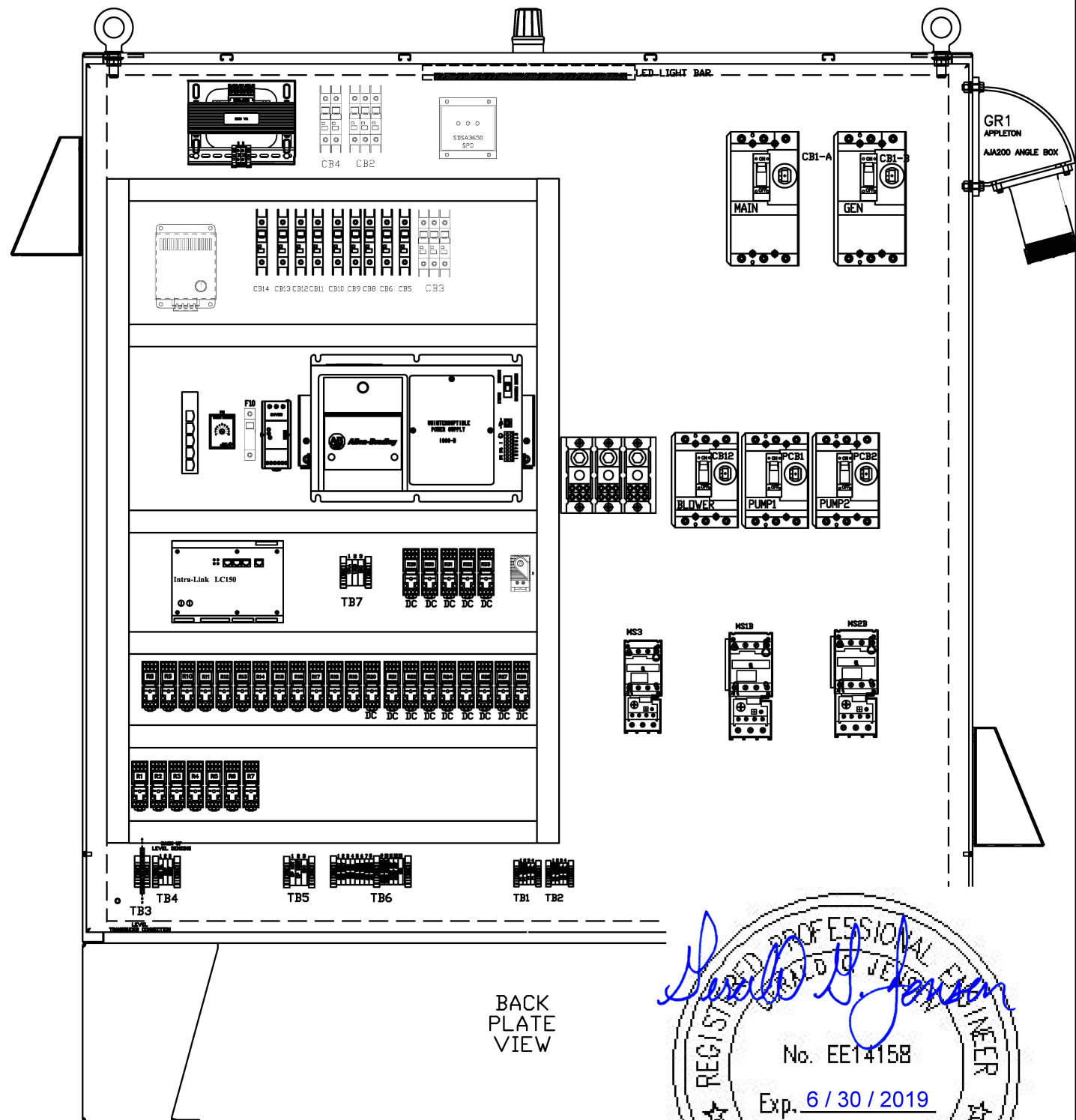


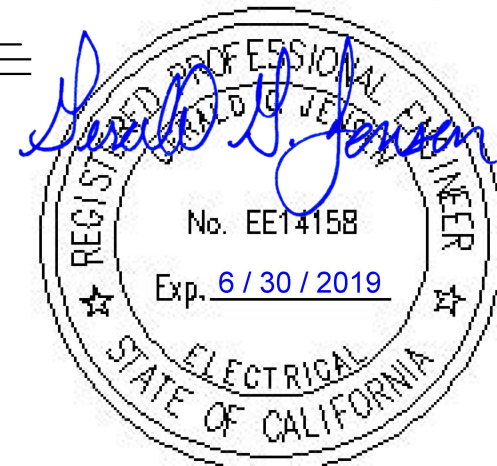
60"H X 60"W X 18"D W/12" LEG KIT



INNER DOOR VIEW



BACK PLATE VIEW



6/4/2019

NOTE: 1. SET MAXIMUM HEIGHT OF OPERATOR INTERFACE SCREEN TO 4'-11" TO CENTER.

THE ENCLOSURE SHOWN REPRESENTS THE INTENT OF THE DESIGN. OFTEN THE ENCLOSURE SIZE AND LAYOUT MUST CHANGE TO ACCOMMODATE THE REQUIRED COMPONENTS AND FINAL DESIGN. PLEASE CONTACT ROMTEC UTILITIES TO OBTAIN ACTUAL AS-BUILT DRAWINGS BEFORE INSTALLATION.

<p>18240 NORTH BANK ROAD ROSEBURG, OREGON 97470 PHONE: (541) 496-9678 WWW.ROMTECUTILITIES.COM</p>		<p>PROJECT #: E0418D01 DSN: DSN DRN: DRN CKD: CKD</p>	<p>DATE: 7/25/18</p>	<p>REVISION HISTORY</p>
<p>HIGHGATE COMMUNITY BAKERSFIELD, CA</p>		<p>CONTROL LAYOUT DRAWING</p>		
<p>ELECTRICAL SHEET E4</p>		<p>DATE: 7/25/18</p>		