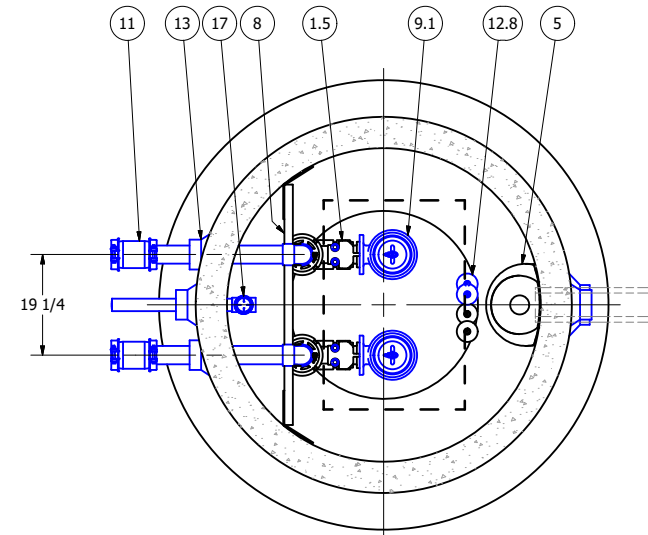


ISO VIEW
SCALE 1 / 24

5' DIAMETER WET WELL
3" DISCHARGE PIPING
DUPLEX EBARA PUMPS
3" VALVE VAULT

FOR DESIGN REVIEW

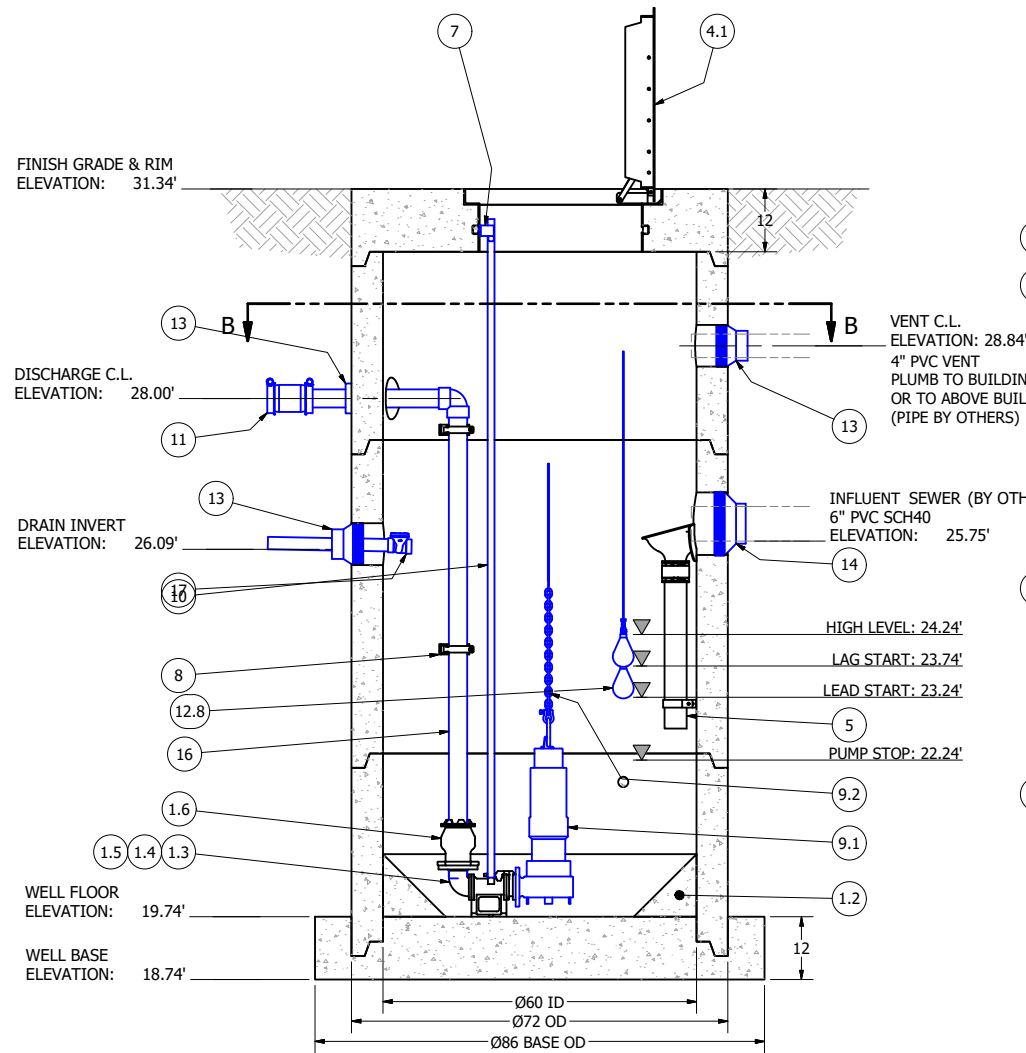


SECTION B-B
SCALE 1 / 18

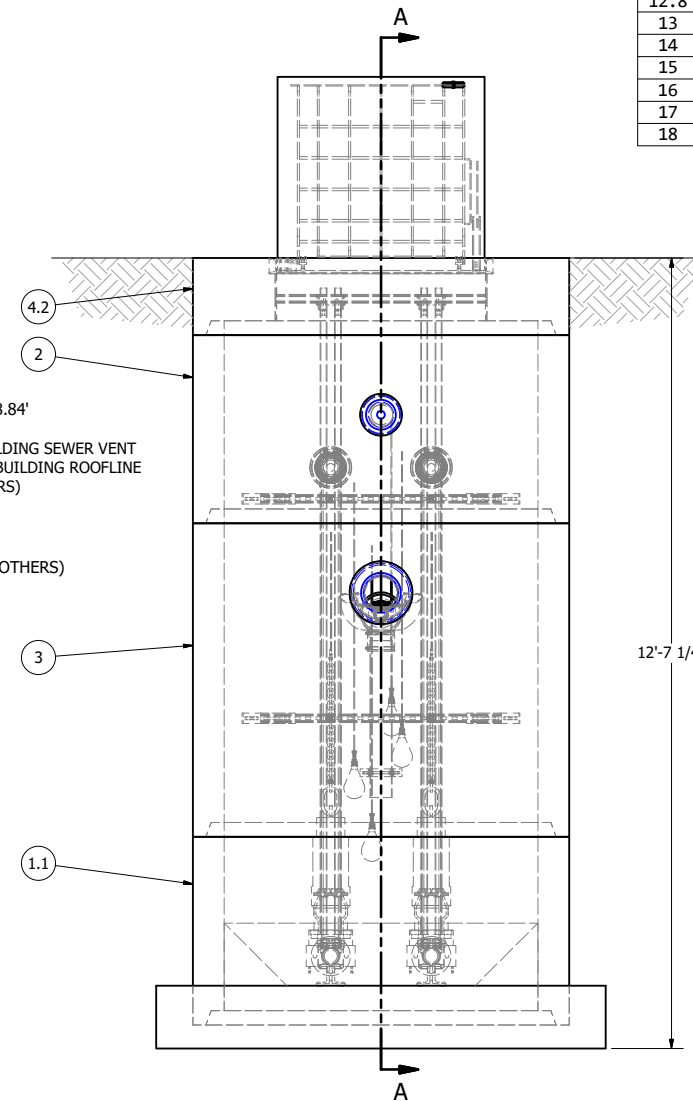
PRIMARY SENSOR ELEVATION TABLE		
DESCRIPTION	ELEVATION	Δ
INFLUENT INVERT	25.75'	1.51'
HIGH LEVEL ALARM	24.24'	0.50'
LAG PUMP START	23.74'	0.50'
LEAD PUMP START	23.24'	1.00'
PUMP STOP	22.24'	2.50'
WELL FLOOR	19.74'	

NOTE: TOP SLAB AND HATCH ARE H-20 OCCASIONAL TRAFFIC RATED

PARTS LIST			
ITEM	QTY	STOCK NUMBER	DESCRIPTION
1	1	10-CB000000	BASE SLAB ASSEMBLY
1.1	1	10-CB053600	BASE - WW - 5ft DIA x 36in
1.2	1	10-GR050012	GROUT RING - 5ft DIA - 12in
1.3	2	31-EL2H03EB	DISCHARGE ELBOW - 2.5in X 3in - EBARA
1.4	2	31-HW00AKS6	ANCHOR KIT - 316SS - DISCHARGE ELBOW
1.5	2	31-QD2HLM65	QDC - 2.5in - LM65 - EBARA
1.6	2	44-AD03HYGP	FLANGE ADAPTER - 3in - HYMAX GRIP
2	1	12-CR053600	BARREL - 5ft DIA x 3ft H
3	1	12-CR056000	BARREL - 5ft DIA x 5ft H
4	1	14-CT000000	TOP SLAB ASSEMBLY
4.1	1	13-HH05HD0U	HATCH - H20 - 5ft
4.2	1	14-CT05HD00	TOP SLAB - 5ft DIA - H20
5	1	15-DB000000	DROP BOWL ASSEMBLY - 6in INLET
6	2	17-AC38000B	BOLT KIT - UPPER GUIDE BAR BRACKET
7	2	17-UG01S4EB	BRACKET - 304SS - UPPER GUIDE BAR - 1in
8	2	18-BR000000	BRACKET ASSEMBLY - 316SS - DISCHARGE SUPPORT
9	1	30-PU000000	PUMP SHIPPING CRATE
9.1	2	30-PU0000EB	PUMP - EBARA 80DVFU61.5 - 2HP
9.2	2	32-AC0000EB	LIFTING ASSEMBLY - EBARA
9.3	2	32-CG55000D	CABLE SUPPORT GRIP - 304SS - 0.75in-0.99in
9.4	1	32-PL000000	LIFTING RING - PUMP
10	42.0 ft	40-PP0100S4	PIPE - 304SS SCH40 - 1in DIA
11	2	44-CP030HD0	COUPLING - 3in - HYMAX GRIP
12	1	50-AC000000	WELL SHIPPING CRATE
12.1	3	12-GS000001	BARREL - GASKET
12.2	1	13-KY000000	HATCH KEY
12.3	4	18-AC00CH00	CABLE HANGER ASSEMBLY - 316SS
12.4	4	18-HD040000	LIFTING CLUTCH - 4 TON
12.5	1	51-AC00NSTB	NEVER SIEZE - TUBE
12.6	57 ft	51-BT060000	JOINT WRAP - 6in - BOA TAPE
12.7	63 ft	51-SE3Q3QSL	SEALANT - 0.75in - CONSEAL CS-202
12.8	4	80-FS20MSNL	FLOAT - 20m - MS1 - NOLTA
13	4	59-KB080400	KOR-N-SEAL - 8in CORE - 4in thru 1.5in PIPE
14	1	59-KB1206SS	KOR-N-SEAL - 12in CORE x 6in IPS PIPE
15	2.0 ft	70-PP0200P4	PIPE - PVC SCH40 - 2in DIA
16	20.0 ft	70-PP0300P8	PIPE - PVC SCH80 - 3in DIA
17	1	72-BW020SP8	BACKWATER VALVE - PVC - 2in
18	2	76-EL039080	ELBOW - PVC SCH80 - 3in x 90deg - SLIP



SECTION A-A
SCALE 1 / 18



FRONT VIEW
SCALE 1 / 18

NOTE:
CONDUIT TO CONTROL PANEL (BY OTHERS)
MINIMUM:
(2) FOR POWER
(1) FOR LEVEL SENSING

NOTE: CONTRACTOR TO SEAL ALL CONCRETE JOINTS AND PIPE PENETRATIONS WITH NON-SHRINK GROUT

NOTE: ALL DIMENSIONS AND ELEVATIONS SHOWN ARE NOMINAL DIMENSIONS. IT IS THE RESPONSIBILITY OF THE ON-SITE CONTRACTOR OR ROMTEC UTILITIES CUSTOMER (NOT ROMTEC UTILITIES) TO VERIFY THE ACCURACY OF ANY CRITICAL DIMENSIONS OR ELEVATIONS PRIOR TO SETTING OR INSTALLING ANY EQUIPMENT.

COLOR LEGEND

- MAJOR CONCRETE COMPONENTS WITH PRE-INSTALLED COMPONENTS.
- COMPONENTS PRE-ASSEMBLED TO THE EXTENT POSSIBLE AND WILL NEED TO BE FIELD INSTALLED.

NOTE: PRE-ASSEMBLY IS DONE AT ROMTEC UTILITIES' DISCRETION AND MAY CHANGE AT THE TIME OF PRODUCTION.

ALL MATERIALS SHOWN ON THIS SHEET WILL BE SUPPLIED BY ROMTEC UTILITIES AND DELIVERED TO THE SITE AFTER THE HOLE HAS BEEN EXCAVATED AND SHORED. THE CONTRACTOR SHALL SUPPLY A CRANE OF SUFFICIENT SIZE TO LOWER ALL THE CONCRETE PIECES INTO THE HOLE SAFELY. THE CONTRACTOR SHALL INSTALL THE WET WELL (AND VALVE VAULT AND METERING VAULT IF APPLICABLE). ROMTEC UTILITIES WILL PROVIDE A REPRESENTATIVE FOR TECHNICAL ASSISTANCE ON THE DAY OF INSTALLATION TO ANSWER ANY QUESTIONS THAT MAY ARISE. THE CONTRACTOR IS RESPONSIBLE FOR ALL PLUMBING AND ELECTRICAL CONNECTIONS AND INSTALLATION. ITEMS NOTED AS "BY OTHERS" WILL BE PROVIDED AND INSTALLED BY THE CONTRACTOR. ROMTEC UTILITIES WILL NOT INSTALL ANY OF THE COMPONENTS SHOWN ON THIS PAGE.



© 2019 ROMTEC INC. ALL RIGHTS RESERVED. THESE PLANS AND DRAWINGS MAY NOT BE REPRODUCED, ADAPTED, OR FURTHER DISTRIBUTED, AND NO COMPONENTS MAY BE CONSTRUCTED FROM THESE PLANS, WITHOUT WRITTEN PERMISSION OF ROMTEC, INC.

REV	DATE	DESCRIPTION	BY
1			

VERIFY SCALE
DRAWING HAS BEEN
CHECKED FOR
SCALE AND UNIT
CONVERSIONS
BY: [Signature]

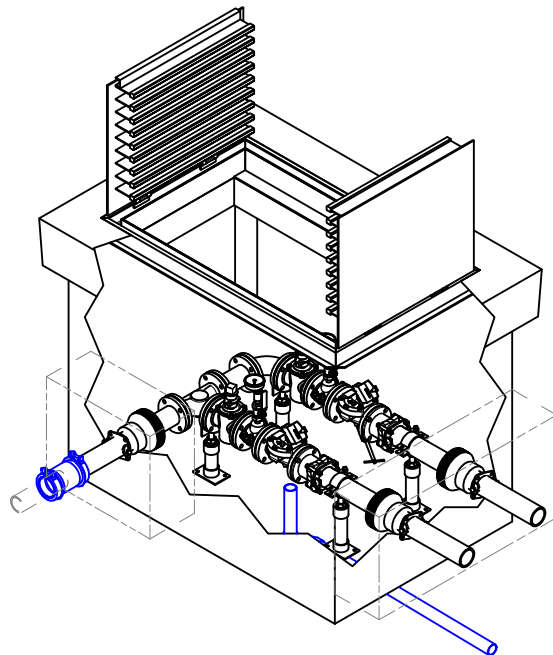
DATE: 8-22-19

ROMTEC UTILITIES
18240 NORTH BANK ROAD
ROSEBURG, OREGON 97470
PHONE: (541) 496-9678
WWW.ROMTECUTILITIES.COM

PORTSIDE PHASE 3
VANCOUVER, WA

WET WELL ASSEMBLY
COMPONENT DRAWING

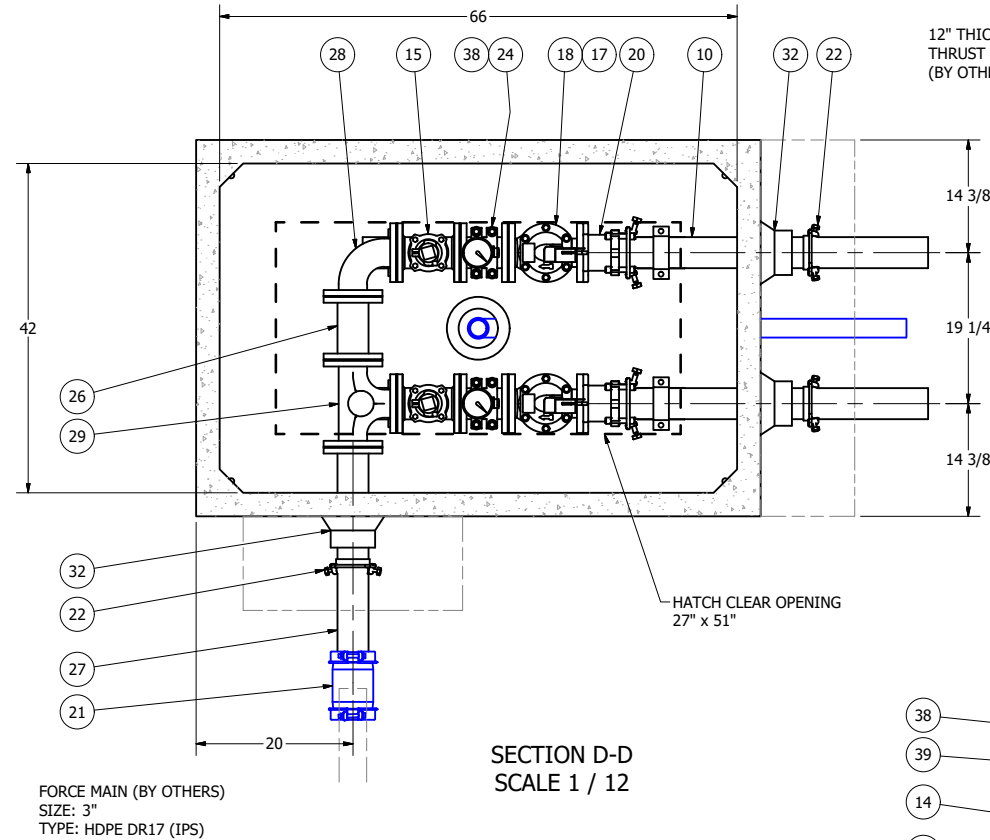
MECHANICAL SHEET
3 OF 4



ISO VIEW
SCALE 1 / 18

**660 VALVE VAULT
3" PIPING AND VALVES**

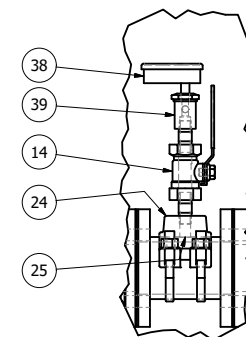
FOR DESIGN REVIEW



SECTION D-D
SCALE 1 / 12

FORCE MAIN (BY OTHERS)
SIZE: 3"
TYPE: HDPE DR17 (IPS)

**NOTE: TOP SLAB AND HATCH ARE
H-20 OCCASIONAL TRAFFIC RATED**



DETAIL E
SCALE 1 / 6

PARTS LIST				
ITEM	QTY	STOCK NUMBER	DESCRIPTION	
1	1	20-CB660000	BASE - VV - 660 - CUSTOM HEIGHT	
2	1	23-HH6600HE	HATCH - VV - 660 - H20	
3	1	24-CT660HD0	TOP SLAB - VV - 660 - H20	
4	1	25-KY0000BR	BRACKET - VALVE KEY	
5	1	25-KY0600GW	VALVE KEY - 6ft - GATE WRENCH	
6	2	25-PS0300CS	PIPE STAND - 304SS - 3in CLAMP	
7	2	25-PS03RUFL	PIPE STAND - 304SS - 3in FLANGE	
8	4	25-PS0BBASE	PIPE STAND BASE - 304SS	
9	2.8 ft	40-PP0200S4	PIPE - 304SS SCH40 - 2in DIA (PIPE STANDS)	
10	7.0 ft	40-PP0300D0	PIPE - DI - 3in DIA	
12	4	40-TT0H02S4	NIPPLE - 304SS - 0.5in DIA x 2in	
14	2	41-BV0H00S6	BALL VALVE - 316SS - 0.5in	
15	2	41-PV0300D0	PLUG VALVE - 3in - DIRECT OP NUT	
16	1	42-AC0300BF	BACKFLOW ACTUATOR - 3in	
17	2	42-MI034600	MECHANICAL INDICATOR - 3in THRU 6in	
18	2	42-SF0300D0	CHECK VALVE - SWING FLEX - 3in	
20	2	44-AD03RMD0	RFCA - 3in - ROMAC - FBEC w/SS HARDWARE	
21	1	44-CP030HD0	COUPLING - 3in - HYMAX GRIP	
22	3	44-RG030STR	RETAINER GLAND - 3in - HEAVY DUTY	
24	2	44-TS030H00	TAPPING SADDLE - 3in x .5in NPT	
25	2	45-FF030060	SPOOL - DI - 3in DIA x 6in - FLGxFLG	
26	1	45-FF030080	SPOOL - DI - 3in DIA x 8in - FLGxFLG	
27	1	45-FP030300	SPOOL - DI - 3in DIA x 30in - FLGxPE	
28	1	46-EL0390DI	ELBOW - DI - 3in x 90deg - FLGxFLG	
29	1	46-TE0303DI	TEE - DI - 3in - FLGxFLG	
30	9	49-GS030000	GASKET - FLANGE - 3in	
31	29 ft	51-SE0101SL	JOINT SEALANT - 1in - CONSEAL CS-202	
32	3	59-KB080400	KOR-N-SEAL - 8in CORE - 4in thru 1.5in PIPE	
33	1	70-00000000	DRAIN ASSEMBLY - 2in PVC SCH40	
38	2	81-PG3H00QB	PRESSURE GAUGE - 3.5in DIA x 30#	
39	2	83-GI0HF0QF	DIAPHRAGM SEAL - 0.5in FNPT x 0.25in FNPT	

COLOR LEGEND

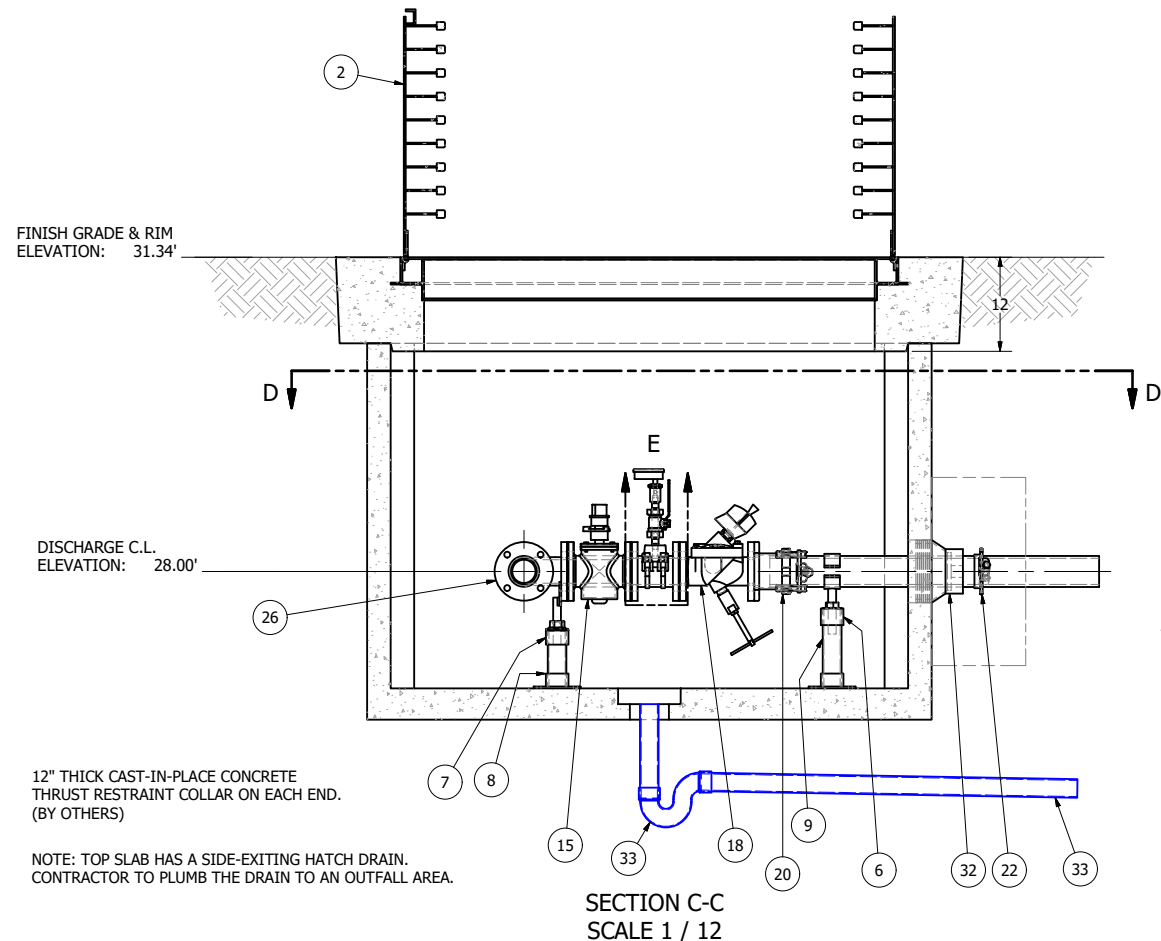
MAJOR CONCRETE COMPONENTS WITH PRE-INSTALLED COMPONENTS.
COMPONENTS PRE-ASSEMBLED TO THE EXTENT POSSIBLE AND WILL NEED TO BE FIELD INSTALLED.

NOTE: PRE-ASSEMBLY IS DONE AT ROMTEC UTILITIES' DISCRETION AND MAY CHANGE AT THE TIME OF PRODUCTION.

ALL MATERIALS SHOWN ON THIS SHEET WILL BE SUPPLIED BY ROMTEC UTILITIES AND DELIVERED TO THE SITE AFTER THE HOLE HAS BEEN EXCAVATED AND SHORED. THE CONTRACTOR SHALL SUPPLY A CRANE OF SUFFICIENT SIZE TO LOWER ALL THE CONCRETE PIECES INTO THE HOLE SAFELY. THE CONTRACTOR SHALL INSTALL THE WET WELL (AND VALVE VAULT AND METERING VAULT IF APPLICABLE). ROMTEC UTILITIES WILL PROVIDE A REPRESENTATIVE FOR TECHNICAL ASSISTANCE ON THE DAY OF INSTALLATION TO ANSWER ANY QUESTIONS THAT MAY ARISE. THE CONTRACTOR IS RESPONSIBLE FOR ALL PLUMBING AND ELECTRICAL CONNECTIONS AND INSTALLATION. ITEMS NOTED AS "BY OTHERS" WILL BE PROVIDED AND INSTALLED BY THE CONTRACTOR. ROMTEC UTILITIES WILL NOT INSTALL ANY OF THE COMPONENTS SHOWN ON THIS PAGE.



© 2019 ROMTEC INC. ALL RIGHTS RESERVED. THESE PLANS AND DRAWINGS MAY NOT BE REPRODUCED, ADAPTED, OR FURTHER DISTRIBUTED, AND NO COMPONENTS MAY BE CONSTRUCTED FROM THESE PLANS, WITHOUT WRITTEN PERMISSION OF ROMTEC, INC.

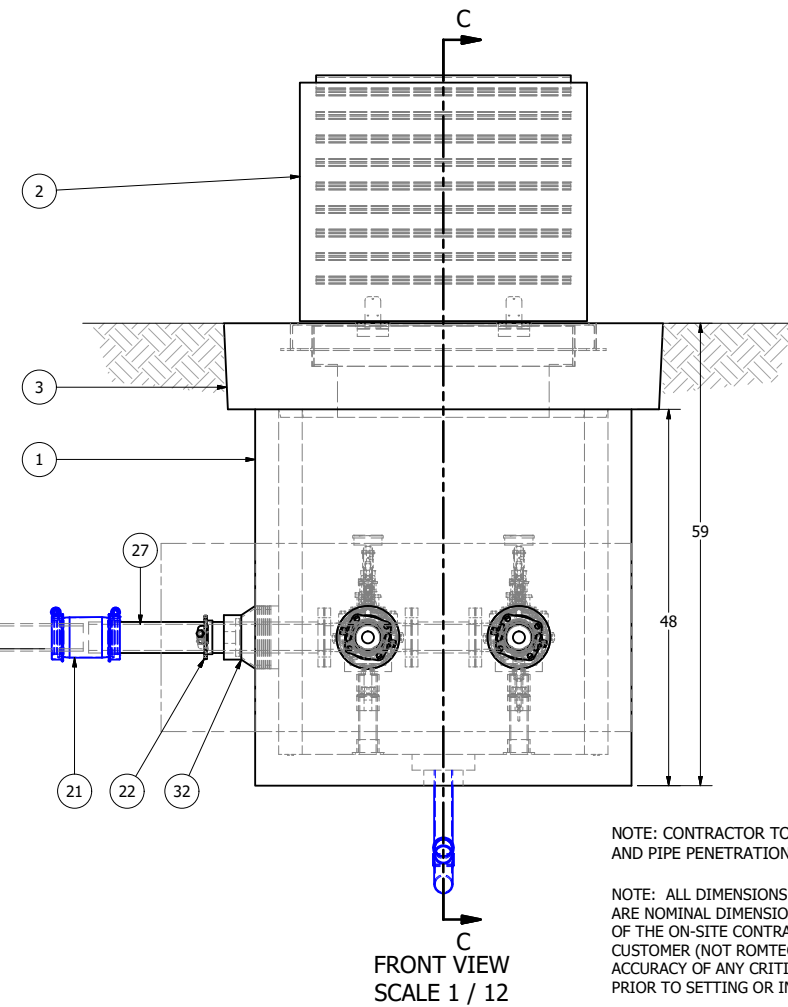


SECTION C-C
SCALE 1 / 12

12" THICK CAST-IN-PLACE CONCRETE
THRUST RESTRAINT COLLAR ON EACH END.
(BY OTHERS)

NOTE: TOP SLAB HAS A SIDE-EXITING HATCH DRAIN.
CONTRACTOR TO PLUMB THE DRAIN TO AN OUTFALL AREA.

FORCE MAIN INVERT
ELEVATION: 27.88'
FORCE MAIN (BY OTHERS)
SIZE: 3"
TYPE: HDPE DR17 (IPS)



FRONT VIEW
SCALE 1 / 12

NOTE: CONTRACTOR TO SEAL ALL CONCRETE JOINTS
AND PIPE PENETRATIONS WITH NON-SHRINK GROUT

NOTE: ALL DIMENSIONS AND ELEVATIONS SHOWN
ARE NOMINAL DIMENSIONS. IT IS THE RESPONSIBILITY
OF THE ON-SITE CONTRACTOR OR ROMTEC UTILITIES
CUSTOMER (NOT ROMTEC UTILITIES) TO VERIFY THE
ACCURACY OF ANY CRITICAL DIMENSIONS OR ELEVATIONS
PRIOR TO SETTING OR INSTALLING ANY EQUIPMENT.

ROMTEC UTILITIES
18240 NORTH BANK ROAD
ROSEBURG, OREGON 97470
PHONE: (541) 496-9678
WWW.ROMTECUTILITIES.COM

PORTSIDE PHASE 3
VANCOUVER, WA
VALVE VAULT ASSEMBLY
COMPONENT DRAWING

MECHANICAL SHEET
4 OF 4

REV	DATE	DESCRIPTION	HISTORY
1			

VERIFY SCALE
DRAWING HAS BEEN
REVIEWED FOR
SCALE AND UNIT
CONFORMANCE
BY: [Signature]
DATE: 8-22-19