

ISO VIEW
SCALE 1 / 30

5' DIAMETER WET WELL
3" DISCHARGE PIPING
FLYGT NP3085SH

FOR PRODUCTION

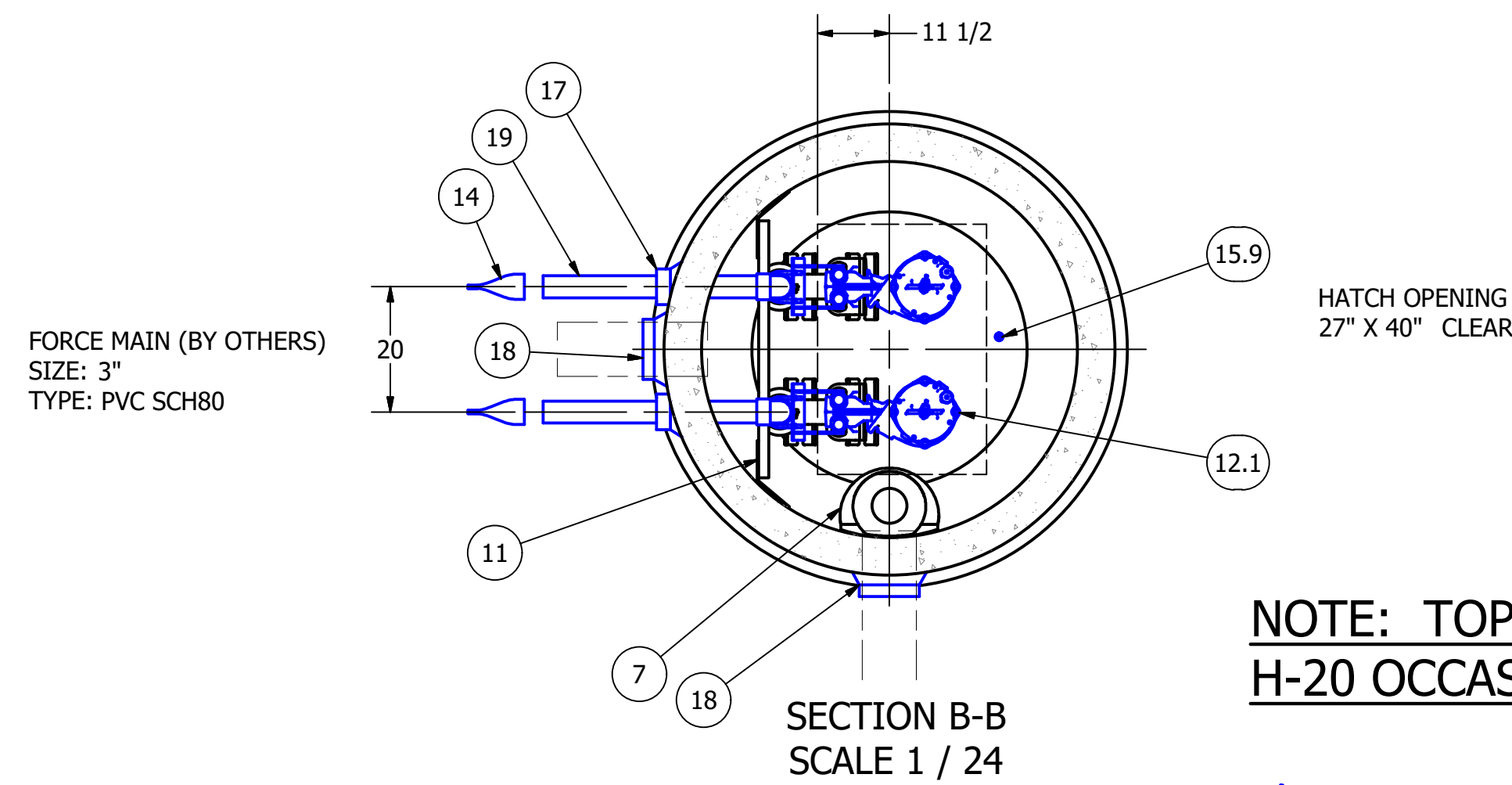
COLOR LEGEND

- MAJOR CONCRETE COMPONENTS WITH PRE-INSTALLED COMPONENTS.
- COMPONENTS PRE-ASSEMBLED TO THE EXTENT POSSIBLE AND WILL NEED TO BE FIELD INSTALLED.

NOTE: PRE-ASSEMBLY IS DONE AT ROMTEC UTILITIES' DISCRETION AND MAY CHANGE AT THE TIME OF PRODUCTION.



© 2018 ROMTEC INC. ALL RIGHTS RESERVED. THESE PLANS AND DRAWINGS MAY NOT BE REPRODUCED, ADAPTED, OR FURTHER DISTRIBUTED, AND NO COMPONENTS MAY BE CONSTRUCTED FROM THESE PLANS, WITHOUT WRITTEN PERMISSION OF ROMTEC, INC.



NOTE: TOP SLAB AND HATCH ARE H-20 OCCASIONAL TRAFFIC RATED

NOTE:
CONDUIT TO CONTROL PANEL (BY OTHERS)
MINIMUM:
(2) FOR POWER
(1) FOR LEVEL SENSING

FINISH GRADE & RIM
ELEVATION: 280.00'

FORCE MAIN (BY OTHERS)
SIZE: 3"
TYPE: PVC SCH80

TIDE FLEX CHECK VALVE
(PROVIDED LOOSE)
(TO BE MOUNTED ON END
OF EACH FORCE MAIN)

8in PVC OVERFLOW
ELEV.: 275.67'

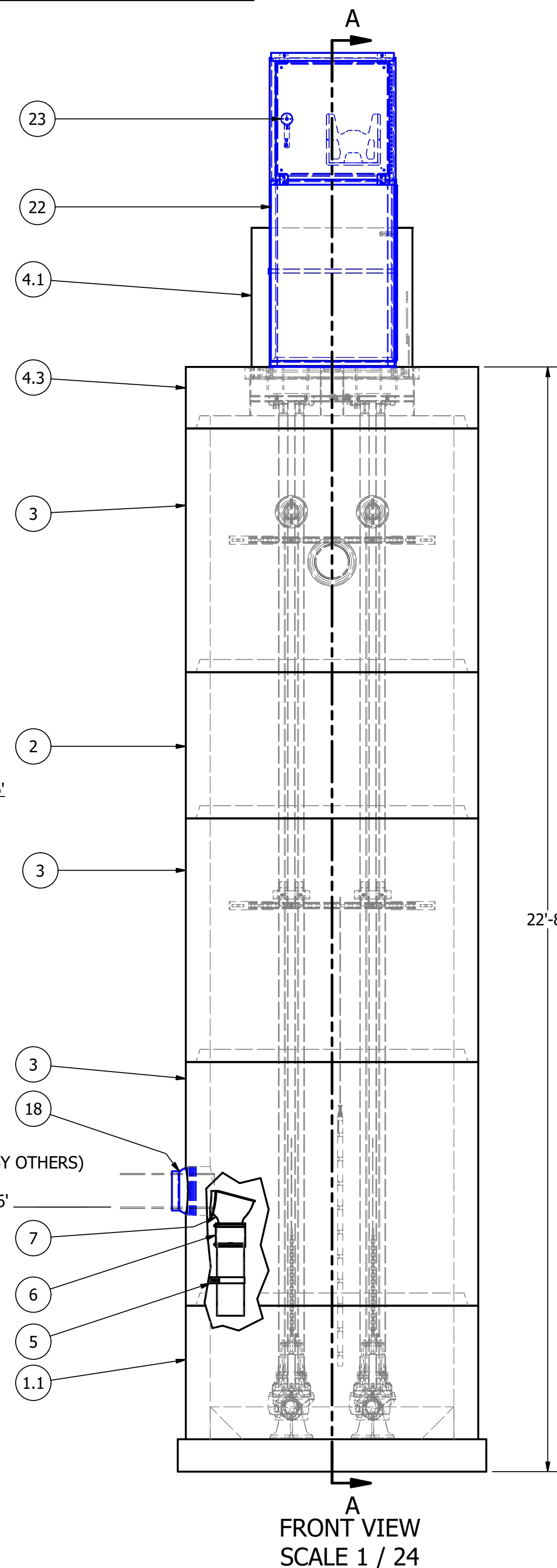
EMERGENCY STORAGE ELEV.: 271.16'

INFLUENT SEWER (BY OTHERS)
8" PVC
ELEVATION: 262.76'

WELL FLOOR
ELEVATION: 258.00'

SECTION A-A
SCALE 1 / 24

PRIMARY SENSOR ELEVATION TABLE		
DESCRIPTION	ELEVATION	Δ
INFLUENT INVERT	262.76'	0.26'
HIGH LEVEL ALARM	262.50'	0.50'
LAG PUMP START	262.00'	1.00'
LEAD PUMP START	261.00'	1.00'
PUMP STOP	260.00'	2.00'
WELL FLOOR	258.00'	



PARTS LIST			
ITEM	QTY	STOCK NUMBER	DESCRIPTION
1	1	10-CB000000	BASE SLAB ASSEMBLY
1.1	1	10-CB053600	BASE - WW - 5ft DIA x 36in
1.2	1	10-GR050000	GROUT RING - 5ft DIA - 8in
1.3	2	31-EL0300FL	DISCHARGE ELBOW - 3in - FLYGT
1.4	2	31-HW00AKS6	ANCHOR KIT - 316SS - DISCHARGE ELBOW
1.5	2	44-AD03HYFA	FLANGE ADAPTER - 3in - HYMAX GRIP
2	1	12-CR053600	BARREL - 5ft DIA x 3ft H
3	3	12-CR056000	BARREL - 5ft DIA x 5ft H
4	1	14-CT000000	TOP SLAB ASSEMBLY
4.1	1	13-HH05HD0U	HATCH - H20 - 5ft
4.2	1	13-VT0000AL	VENT - ALUMINUM - FLUSH
4.3	1	14-CT05HD00	TOP SLAB - 5ft DIA - H20
5	1	15-BR06SS35	BRACKET - 316SS - 6in PIPE
6	1	15-CP060000	COUPLING - FERNCO - 6in
7	1	15-DB410645	DROP BOWL - 8in INLET x 6in OUTLET - 5ft WET WELL
8	2	17-AC38000B	BOLT KIT - UPPER GUIDE BAR BRACKET
9	2	17-IG0254FL	BRACKET - IGBB - 2in RAILS x 3in DISCHARGE
10	2	17-UG0200FL	BRACKET - 316SS - UPPER GUIDE BAR - 2in
11	2	18-BR000000	BRACKET ASSEMBLY - 316SS - DISCHARGE SUPPORT
12	1	30-PU000000	PUMP SHIPPING CRATE
12.1	2	30-PU0000FL	PUMP - FLYGT NP3085SH 453 - 3HP - 3in - 50ft CABLE
12.2	2	32-BS0H00SS	BOW SHACKLE - 316SS - 1-2in
12.3	2	32-BS3800SS	BOW SHACKLE - 316SS - 3-8in
12.4	2	32-CGA000SS	CORD GRIP - .750in - .990 - SS
12.5	4.0 ft	32-PL9320S6	CHAIN - 316SS - 9-32in S5
12.6	1	32-PLGE0000	GRIP EYE UNIT
12.7	2	32-PLLSAPOL	LIFTING SLING ASSEMBLY - POLY - 22ft TOTAL LENGTH
13	80.0 ft	40-PP0200S4	PIPE - 304SS SCH40 - 2in DIA (8 @ 10ft)
14	2	42-TF030000	CHECK VALVE - TIDEFLEX - 3in
15	1	50-AC000000	WELL SHIPPING CRATE
15.1	5	12-GS000001	BARREL - GASKET
15.2	1	13-KY000000	HATCH KEY
15.3	4	18-AC00CH00	CABLE HANGER ASSEMBLY
15.4	4	18-HD040000	LIFTING CLUTCH - 4 TON
15.5	1	51-AC00NSTB	NEVER SIEZE - TUBE
15.6	95	51-BT060000	JOINT WRAP - 6in - BOA TAPE
15.7	105	51-SE3Q3QSL	SEALANT - 0.75in x 0.75in - 21ft/ROLL - CS-202
15.8	1	62-BR00PB00	BRACKET - PROBE MOUNTING
15.9	1	80-PB051050	PROBE - 5-10-50
16	1	51-LC1TN434	COATING - TNEC 434 (INTERIOR)
17	2	59-KB080400	KOR-N-SEAL - 8in CORE - 4in thru 1.5in PIPE
18	2	59-KB1208P0	KOR-N-SEAL - 12in CORE x 8in PVC PIPE
19	42 ft	70-PP0300P8	PIPE - PVC SCH80 - 3in DIA (36in HORIZONTAL, 18ft VERTICAL)
20	1.5 ft	70-PP0600DR	PIPE - PVC SDR35 - 6in DIA
21	2	76-EL039080	ELBOW - PVC SCH80 - 3in x 90deg - SLIP
22	1	13-DS3030SS	DISCONNECT STAND - 304SS - 30in x 30in x 8in PANEL
23	1	61-EP3000DC	DISCONNECT PANEL - 15-30FLA

ALL MATERIALS SHOWN ON THIS SHEET WILL BE SUPPLIED BY ROMTEC UTILITIES AND DELIVERED TO THE SITE AFTER THE HOLE HAS BEEN EXCAVATED AND SHORED. THE CONTRACTOR SHALL SUPPLY A CRANE OF SUFFICIENT SIZE TO LOWER ALL THE CONCRETE PIECES INTO THE HOLE SAFELY. THE CONTRACTOR SHALL INSTALL THE WET WELL (AND VALVE VAULT AND METERING VAULT IF APPLICABLE). ROMTEC UTILITIES WILL PROVIDE A REPRESENTATIVE FOR TECHNICAL ASSISTANCE ON THE DAY OF INSTALLATION TO ANSWER ANY QUESTIONS THAT MAY ARISE. THE CONTRACTOR IS RESPONSIBLE FOR ALL PLUMBING AND ELECTRICAL CONNECTIONS AND INSTALLATION. ITEMS NOTED AS "BY OTHERS" WILL BE PROVIDED AND INSTALLED BY THE CONTRACTOR. ROMTEC UTILITIES WILL NOT INSTALL ANY OF THE COMPONENTS SHOWN ON THIS PAGE.

NOTE: CONTRACTOR TO SEAL ALL CONCRETE JOINTS AND PIPE PENETRATIONS WITH NON-SHRINK GROUT

NOTE: ALL DIMENSIONS AND ELEVATIONS SHOWN ARE NOMINAL DIMENSIONS. IT IS THE RESPONSIBILITY OF THE ON-SITE CONTRACTOR OR ROMTEC UTILITIES CUSTOMER (NOT ROMTEC UTILITIES) TO VERIFY THE ACCURACY OF ANY CRITICAL DIMENSIONS OR ELEVATIONS PRIOR TO SETTING OR INSTALLING ANY EQUIPMENT.

REV	DATE	DESCRIPTION	REVISION HISTORY
4	3/15/2019	REVISED ELEVATIONS PER COMMENTS	
3	1/22/2019	ADDED DISCONNECT PANEL AND STAND	
2	1/4/2019	REVISED ELEVATIONS, ADDED OVERFLOW PIPE	
1	1/22/2018	REMOVED VALVES AND CANS	

VERIFY SCALE	1" = 0'
DATE:	10-29-18
DSN: AD	
DRN: AD	
CKD: KB	

ROMTEC UTILITIES
18240 NORTH BANK ROAD
ROSEBURG, OREGON 97470
PHONE: (541) 496-9678
WWW.ROMTECUTILITIES.COM

NIelsen INDUSTRIAL
CLARK COUNTY, WA
WET WELL ASSEMBLY
COMPONENT DRAWING