

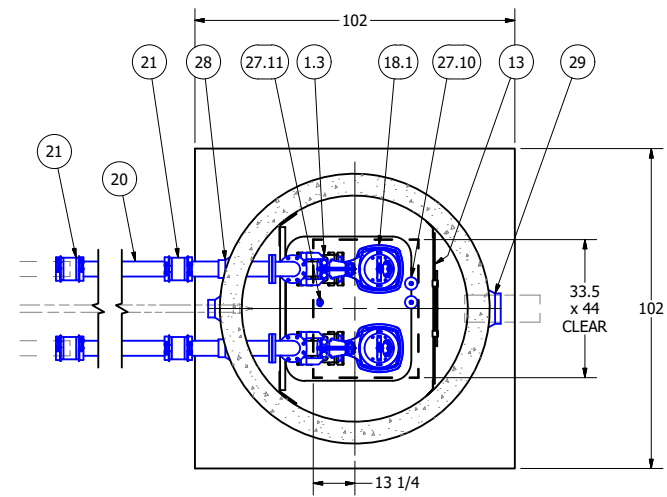
ISO VIEW
SCALE 1 / 36

**6' DIAMETER WET WELL
4" DISCHARGE PIPING
DUPLEX FLYGT PUMPS
4" 5106 VALVE VAULT
FOR DESIGN REVIEW**

ALL MATERIALS SHOWN ON THIS SHEET WILL BE SUPPLIED BY ROMTEC UTILITIES AND DELIVERED TO THE SITE AFTER THE HOLE HAS BEEN EXCAVATED AND SHORED. THE CONTRACTOR SHALL SUPPLY A CRANE OF SUFFICIENT SIZE TO LOWER ALL THE CONCRETE PIECES INTO THE HOLE SAFELY. THE CONTRACTOR SHALL INSTALL THE WET WELL (AND VALVE VAULT AND METERING VAULT IF APPLICABLE). ROMTEC UTILITIES WILL PROVIDE A REPRESENTATIVE FOR TECHNICAL ASSISTANCE ON THE DAY OF INSTALLATION TO ANSWER ANY QUESTIONS THAT MAY ARISE. THE CONTRACTOR IS RESPONSIBLE FOR ALL PLUMBING AND ELECTRICAL CONNECTIONS AND INSTALLATION. ITEMS NOTED AS "BY OTHERS" WILL BE PROVIDED AND INSTALLED BY THE CONTRACTOR. ROMTEC UTILITIES WILL NOT INSTALL ANY OF THE COMPONENTS SHOWN ON THIS PAGE.

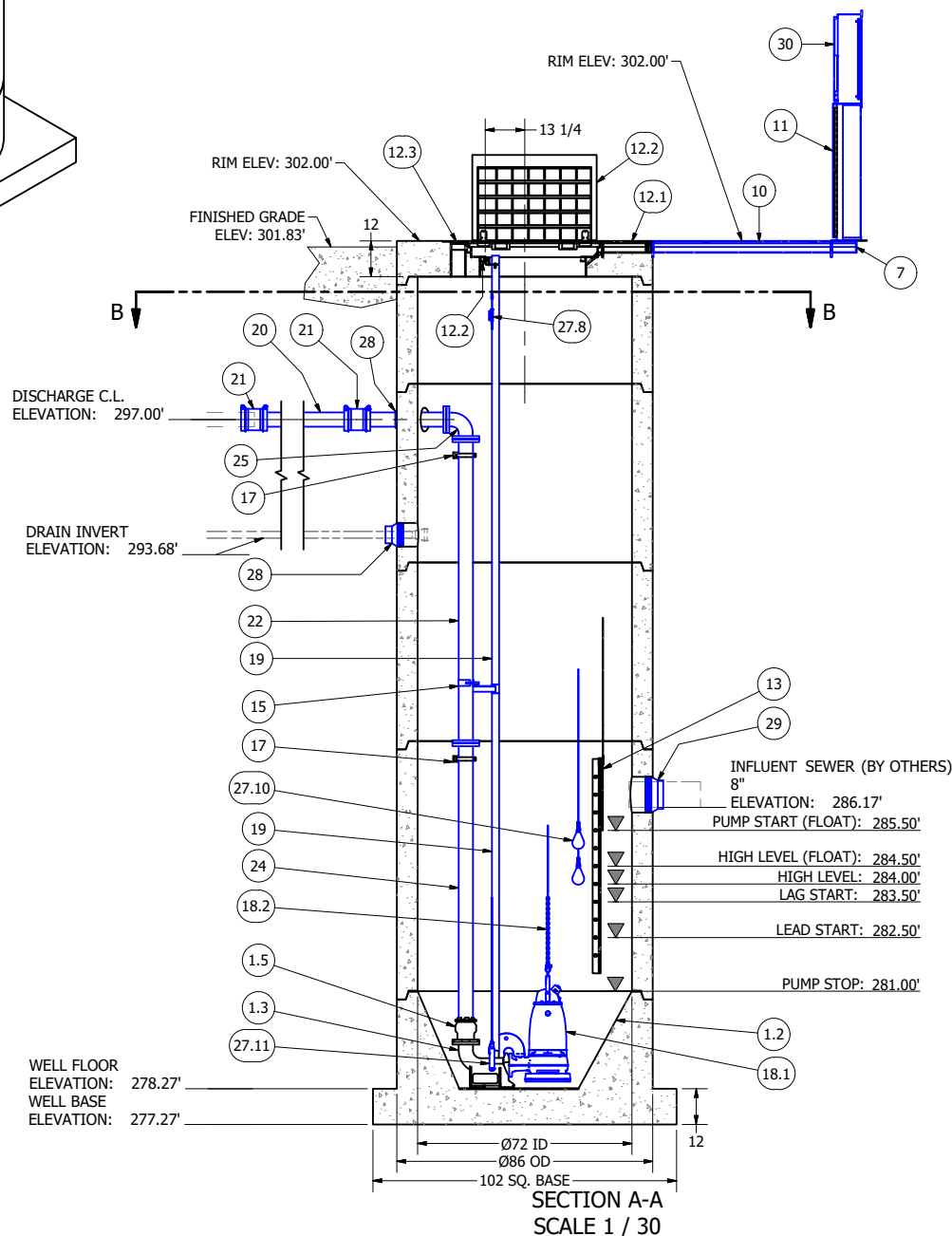


© 2019 ROMTEC INC. ALL RIGHTS RESERVED. THESE PLANS AND DRAWINGS MAY NOT BE REPRODUCED, ADAPTED, OR FURTHER DISTRIBUTED, AND NO COMPONENTS MAY BE CONSTRUCTED FROM THESE PLANS, WITHOUT WRITTEN PERMISSION OF ROMTEC, INC.



SECTION B-B
SCALE 1 / 30

**NOTE: TOP SLAB AND HATCH ARE
H-20 OCCASIONAL TRAFFIC RATED**

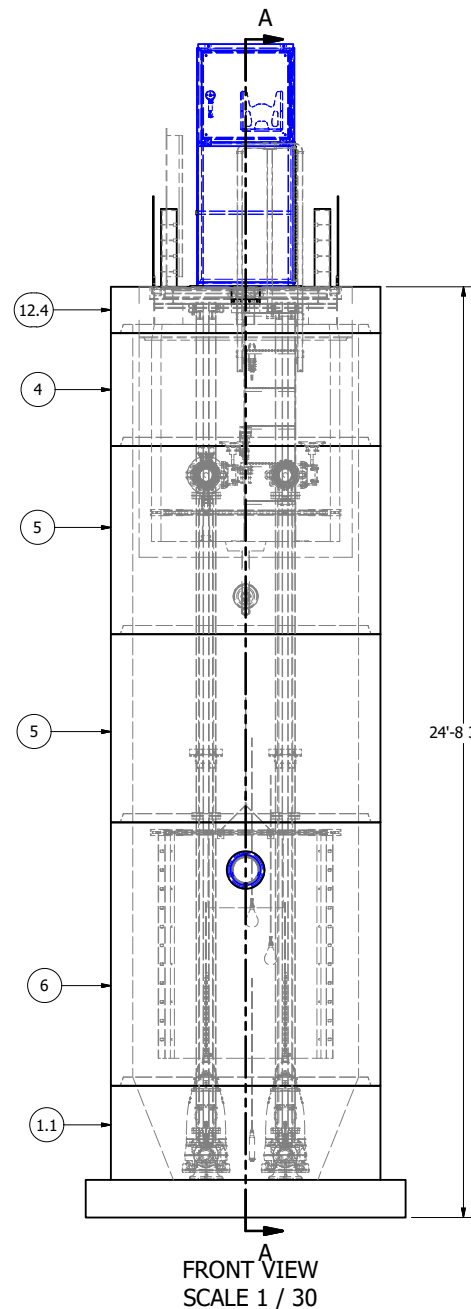


SECTION A-A
SCALE 1 / 30

PRIMARY SENSOR ELEVATION TABLE		Δ
DESCRIPTION	ELEVATION	
INFLUENT INVERT	286.17'	0.50'
HIGH LEVEL ALARM	284.00'	1.00'
LAG PUMP START	283.50'	1.50'
LEAD PUMP START	282.50'	2.73'
PUMP STOP	281.00'	
WELL FLOOR	278.27'	

MISC. ELEVATION TABLE	
DESCRIPTION	ELEVATION
HIGH LEVEL (FLOAT)	284.50'
PUMPS START (FLOAT)	285.50'

PARTS LIST			
ITEM	QTY	STOCK NUMBER	DESCRIPTION
1	1	10-CB000000	BASE SLAB ASSEMBLY
1.1	1	10-CB068H0W	BASE - WW - 6ft DIA - RU DESIGN - SQUARE
1.2	1	11-LC0600RU	LINER - FIBERGLASS - 6ft DIA - RU
1.3	2	31-EL0400FL	DISCHARGE ELBOW - 4in - FLYGT
1.4	2	31-HW00AKS6	ANCHOR KIT - 316SS - DISCHARGE ELBOW
1.5	2	44-AD04RMAL	FLANGE ADAPTER - 4in - ALPHA
2	1	11-LC0600EX	COATING - EXTERIOR - 6ft DIA - TN 46H-413
3	1	11-LC0600IN	COATING - INTERIOR - 6ft DIA - TN 61
4	1	12-CR06360W	BARREL - 6ft DIA x 3ft H
5	2	12-CR06600W	BARREL - 6ft DIA x 5ft H
6	1	12-CR06840W	BARREL - 6ft DIA x 7ft H
7	1	13-CA0608EC	END CAP - 6in WIDE- CABLE TRAY EXT - 8in LONG
10	1	13-CAEX0660	CABLE TRAY EXTENSION - 6in x 5ft
11	1	13-DS3030SS	DISCONNECT STAND - 304SS - 30in x 30in x 8in PANEL
12	1	14-CT000000	TOP SLAB ASSEMBLY
12.1	1	13-CA060000	CABLE TRAY - 6ft TOP SLAB
12.2	1	13-HH06HD0E	HATCH - 6ft - H20
12.3	1	13-VT0000AL	VENT - ALUMINUM - FLUSH
12.4	1	14-CT06HD0W	TOP SLAB - 6ft DIA - H20
12.5	2	50-US0000AL	UNISTRUT - ALUM - SMOOTH x 21in
13	1	15-DP060000	DEFLECTOR PANEL - 6ft DIA x 6ft H
14	2	17-AC38000B	BOLT KIT - UPPER GUIDE BAR BRACKET
15	2	17-IG0256FL	BRACKET - 316SS - INTERMEDIATE GUIDE BAR - 2in
16	2	17-UG0200FL	BRACKET - 316SS - UPPER GUIDE BAR - 2in
17	2	18-BR000000	BRACKET - 316SS - DISCHARGE SUPPORT
18	1	30-PU000000	PUMP SHIPPING CRATE
18.1	2	30-PU0000FL	PUMP - FLYGT NP3153SH - 23HP - 50ft CABLES
18.2	2	32-AC0000FL	PUMP LIFTING SLING - 316SS - FLYGT
18.3	2	32-CG55000D	CABLE SUPPORT GRIP - 304SS - 0.75in-0.99in
18.4	1	32-PLGE0000	GRIP EYE UNIT
19	88.0 ft	40-PP0200S4	PIPE - 304SS SCH40 - 2in DIA (GUIDE RAILS)
20	16.0 ft	40-PP0400D9	PIPE - DI - 4in DIA (2 x 8ft) - P401
21	4	44-CP040ADP	COUPLING - 4in - ALPHA
22	2	45-FF04102P	SPOOL - DI - 4in DIA x 102in - FLGXFLG - P401
23	2	45-FP04030P	SPOOL - DI - 4in DIA x 30in - FLGXPE - P401
24	2	45-FP04102P	SPOOL - DI - 4in DIA x 102in - FLGXPE - P401
25	2	46-EL049099	ELBOW - DI - 4in x 90deg - FLGXFLG - P401
26	6	49-GS040000	GASKET - FLANGE - 4in
27	1	50-AC000000	WELL SHIPPING CRATE
27.2	1	13-KY000000	HATCH KEY
27.3	4	18-AC00CH00	CABLE HANGER ASSEMBLY - 316SS
27.4	4	18-HD040000	LIFTING CLUTCH
27.5	1	51-AC00NSTB	NEVER SIEZE - TUBE
27.6	115 ft	51-BT060000	JOINT WRAP - 6in - B0A TAPE
27.7	10	51-SECS231L	SEALANT - 2in x 1in - CONSEAL CS-231
27.8	1	62-CG00PT00	CORD GRIP - PRESSURE TRANSDUCER - WEDGE CLAMP
27.9	1	80-F100PT00	DESSICANT FILTER - PRESSURE TRANSDUCER
27.10	2	80-FS20MSNL	FLOAT - 20m - MS1 - NOLTA
27.11	1	80-PT1500EH	PRESSURE TRANSDUCER - VERSALINE VL2000
28	3	59-KB080400	KOR-N-SEAL - 8in CORE - 4in thru 1.5in PIPE
29	1	59-KB1208P0	KOR-N-SEAL - 12in CORE x 8in PVC PIPE
30	1	61-EP3000DC	DISCONNECT PANEL - 15-30FLA



FRONT VIEW
SCALE 1 / 30

COLOR LEGEND

- MAJOR CONCRETE COMPONENTS WITH PRE-INSTALLED COMPONENTS.
- COMPONENTS PRE-ASSEMBLED TO THE EXTENT POSSIBLE AND WILL NEED TO BE FIELD INSTALLED.

NOTE: PRE-ASSEMBLY IS DONE AT ROMTEC UTILITIES' DISCRETION AND MAY CHANGE AT THE TIME OF PRODUCTION.

NOTE: CONTRACTOR TO SEAL ALL CONCRETE JOINTS AND PIPE PENETRATIONS WITH NON-SHRINK GROUT

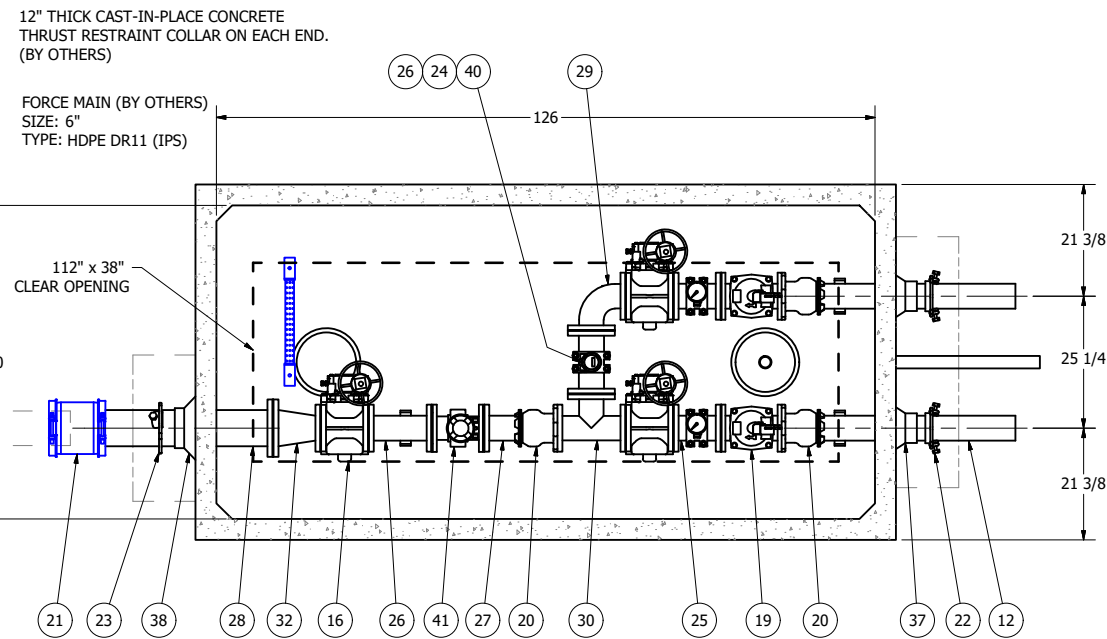
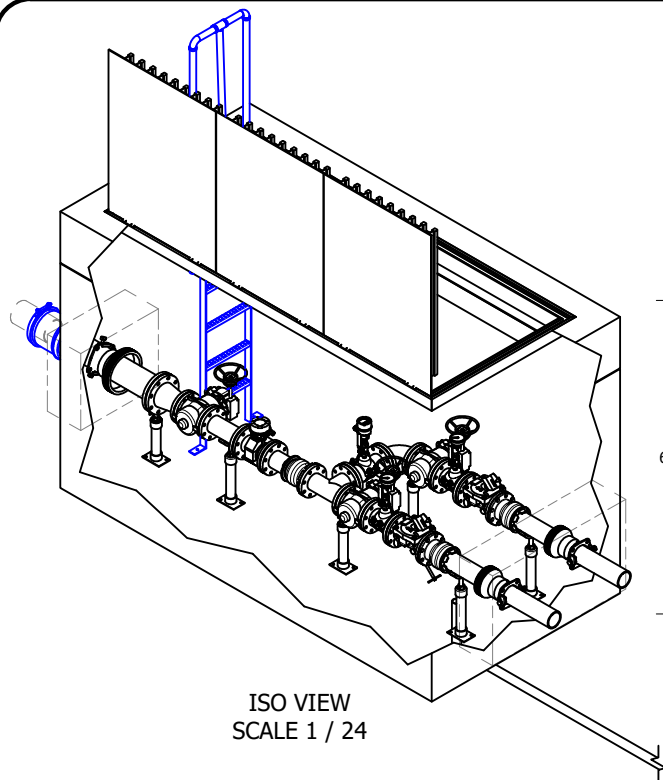
NOTE: ALL DIMENSIONS AND ELEVATIONS SHOWN ARE NOMINAL DIMENSIONS. IT IS THE RESPONSIBILITY OF THE ON-SITE CONTRACTOR OR ROMTEC UTILITIES CUSTOMER (NOT ROMTEC UTILITIES) TO VERIFY THE ACCURACY OF ANY CRITICAL DIMENSIONS OR ELEVATIONS PRIOR TO SETTING OR INSTALLING ANY EQUIPMENT.

REV	DATE	DESCRIPTION	BY	CHK
3	2/11/2020	REVISED PER NEW SITE PLAN LAYOUT	AD	AD
2	12/23/2019	REVISED PER COMMENTS	AD	AD
1	11-19-19	LOWER INVERT, ADD FLOWMETER	KB	KB

VERIFY SCALE
DRAWING HAS BEEN
PRINTED AT THE
SCALE INDICATED
DATE: 10-7-19

ROMTEC UTILITIES
18240 NORTH BANK ROAD
ROSEBURG, OREGON 97470
PHONE: (541) 496-9678
WWW.ROMTECUTILITIES.COM

MOSSY CREEK PUMP STATION
YOCHA DEHE WINTUN NATION
WET WELL ASSEMBLY
COMPONENT DRAWING



**5106 VALVE VAULT
4" PIPING AND VALVES
FLOWMETER & 6" OUTLET**

FOR DESIGN REVIEW

COLOR LEGEND

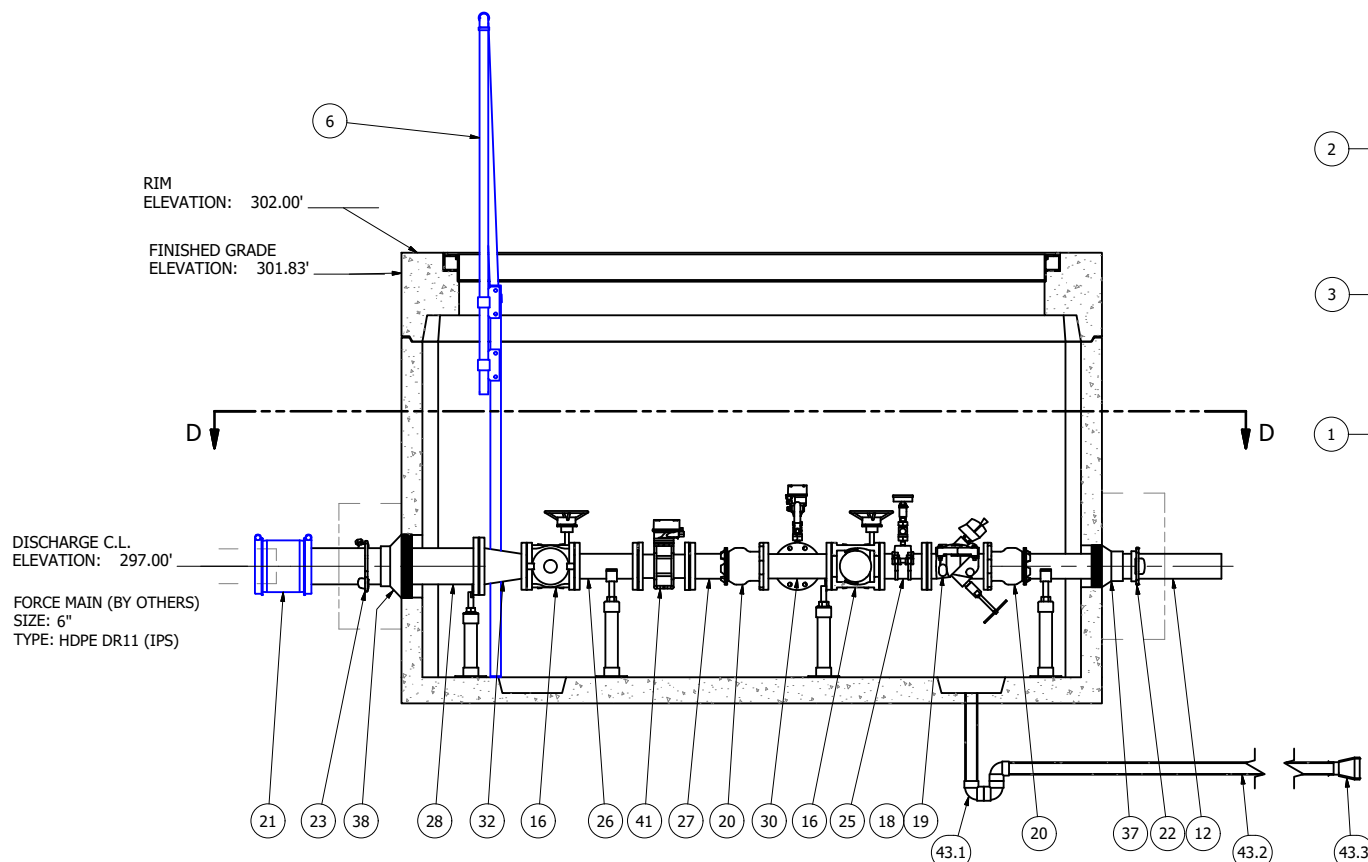
- MAJOR CONCRETE COMPONENTS WITH PRE-INSTALLED COMPONENTS.
- COMPONENTS PRE-ASSEMBLED TO THE EXTENT POSSIBLE AND WILL NEED TO BE FIELD INSTALLED.

NOTE: PRE-ASSEMBLY IS DONE AT ROMTEC UTILITIES' DISCRETION AND MAY CHANGE AT THE TIME OF PRODUCTION.

ALL MATERIALS SHOWN ON THIS SHEET WILL BE SUPPLIED BY ROMTEC UTILITIES AND DELIVERED TO THE SITE AFTER THE HOLE HAS BEEN EXCAVATED AND SHORED. THE CONTRACTOR SHALL SUPPLY A CRANE OF SUFFICIENT SIZE TO LOWER ALL THE CONCRETE PIECES INTO THE HOLE SAFELY. THE CONTRACTOR SHALL INSTALL THE WET WELL (AND VALVE VAULT AND METERING VAULT IF APPLICABLE). ROMTEC UTILITIES WILL PROVIDE A REPRESENTATIVE FOR TECHNICAL ASSISTANCE ON THE DAY OF INSTALLATION TO ANSWER ANY QUESTIONS THAT MAY ARISE. THE CONTRACTOR IS RESPONSIBLE FOR ALL PLUMBING AND ELECTRICAL CONNECTIONS AND INSTALLATION. ITEMS NOTED AS "BY OTHERS" WILL BE PROVIDED AND INSTALLED BY THE CONTRACTOR. ROMTEC UTILITIES WILL NOT INSTALL ANY OF THE COMPONENTS SHOWN ON THIS PAGE.

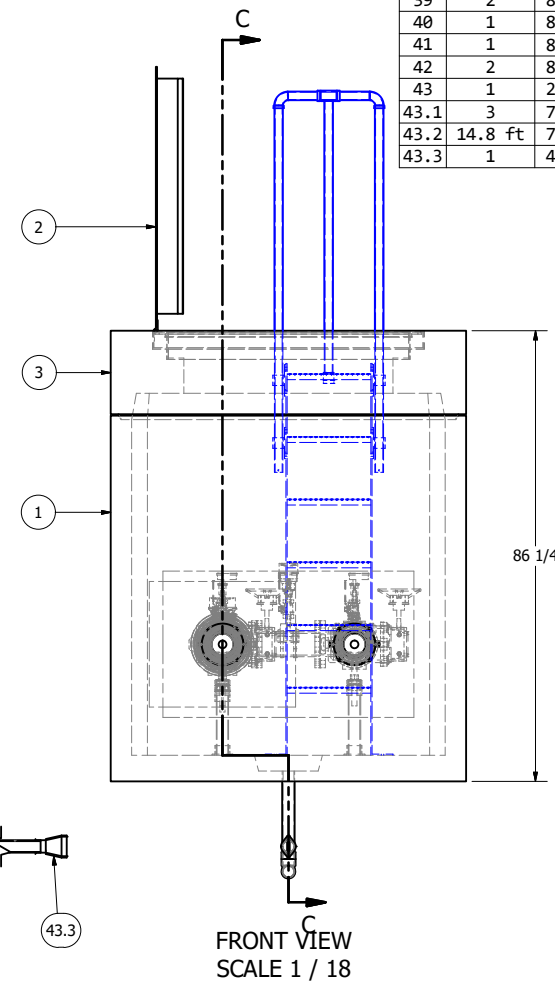


© 2019 ROMTEC INC. ALL RIGHTS RESERVED. THESE PLANS AND DRAWINGS MAY NOT BE REPRODUCED, ADAPTED, OR FURTHER DISTRIBUTED, AND NO COMPONENTS MAY BE CONSTRUCTED FROM THESE PLANS, WITHOUT WRITTEN PERMISSION OF ROMTEC, INC.



12" THICK CAST-IN-PLACE CONCRETE THRUST RESTRAINT COLLAR ON EACH END. (BY OTHERS)

PARTS LIST				
ITEM	QTY	STOCK NUMBER	DESCRIPTION	
1	1	20-CB510600	BASE - WV - 5106	
2	1	23-HH5106HE	HATCH - WV - 5106 - H20	
3	1	24-CT5106HD	TOP SLAB - WV - 5106 - H20	
4	1	25-KY0000BR	BRACKET - VALVE KEY	
5	1	25-KY0600GW	VALVE KEY - 6ft - GATE WRENCH	
6	1	25-LD060300	LADDER - 6ft-3in	
7	2	25-PS04RUFLL	PIPE STAND - 304SS - 4in FLANGE	
8	3	25-PS04S92S	PIPE STAND - 304SS - 4in SADDLE	
9	1	25-PS06RUFLL	PIPE STAND - 304SS - 6in FLANGE	
10	6	25-PS06BBASE	PIPE STAND BASE - 304SS - 2in - 2 BOLT	
11	6.4 ft	40-PP0200S4	PIPE - 304SS SCH40 - 2in DIA (PIPE STANDS)	
12	7.0 ft	40-PP0400DP	PIPE - DI - 4in DIA (2 x 3.5ft) - P401	
13	1	40-TT0H02S4	NIPPLE - 304SS - 0.5in DIA x 2in	
14	4	40-TT0H02S6	NIPPLE - 316SS - 0.5in DIA x 2in	
15	3	41-BV0H00S6	BALL VALVE - 316SS - 0.5in	
16	3	41-PV040HD0	PLUG VALVE - 4in - GEARED HANDWHEEL	
17	1	42-AC0400BF	BACKFLOW ACTUATOR - 4in	
18	2	42-MI034600	MECHANICAL INDICATOR - 3in THRU 6in	
19	2	42-SF0400D0	CHECK VALVE - SWING FLEX - 4in	
20	3	44-AD04RMAL	FLANGE ADAPTER - 4in - ALPHA	
21	1	44-CP060AD0	COUPLING - 6in - ALPHA	
22	2	44-RG040STR	RETAINER GLAND - 4in - HEAVY DUTY	
23	1	44-RG060STR	RETAINER GLAND - 6in - HEAVY DUTY	
24	3	44-TS040H00	TAPPING SADDLE - 4.8in x .5in NPT	
25	2	45-FF040099	SPOOL - DI - 4in DIA x 9in - FLGXFLG - P401	
26	2	45-FF040129	SPOOL - DI - 4in DIA x 12in - FLGXFLG - P401	
27	1	45-FP040129	SPOOL - DI - 4in DIA x 12in - FLGXPE - P401	
28	1	45-FP060369	SPOOL - DI - 6in DIA x 36in - FLGXPE - P401	
29	1	46-EL049099	ELBOW - DI - 4in x 90deg - FLGXFLG - P401	
30	1	46-TE040499	TEE - DI - 4in - FLGXFLG - P401	
31	2	48-PL0000HX	PLUG - 304SS - .25in NPT - HEX SOCKET	
32	1	48-RD06049C	REDUCER - DI - 6in x 4in - CONCENTRIC - P401	
33	12	49-GS040000	GASKET - FLANGE - 4in	
34	1	49-GS060000	GASKET - FLANGE - 6in	
35	34 ft	51-BT060000	JOINT WRAP - 6in - BOA TAPE	
36	43.5 ft	51-SE0101SL	JOINT SEALANT - 1in - CONSEAL CS-202	
37	2	59-KB080400	KOR-N-SEAL - 8in CORE - 4in thru 1.5in PIPE	
38	1	59-KB1206DI	KOR-N-SEAL - 12in CORE x 6in DIPS PIPE	
39	2	81-PG3H00QB	PRESSURE GAUGE - 3.5in DIA - 100#	
40	1	81-PT999999	PRESSURE TRANSMITTER - ROSEMOUNT 3051	
41	1	82-FM04LREH	FLOWMETER - 4in - E&H PROMAG W400	
42	2	83-GI0HF00F	DIAPHRAGM SEAL - 0.5in FNPT x 0.25in FNPT	
43	1	25-DR999999	DRAIN - VALVE VAULT	
43.1	3	76-EL029040	ELBOW - PVC SCH40 - 2in x 90deg - SLIP	
43.2	14.8 ft	70-PP0200P4	PIPE - PVC SCH40 - 2in DIA	
43.3	1	42-TF020000	CHECK VALVE - TIDEFLEX - 2in	



NOTE: CONTRACTOR TO SEAL ALL CONCRETE JOINTS AND PIPE PENETRATIONS WITH NON-SHRINK GROUT

NOTE: ALL DIMENSIONS AND ELEVATIONS SHOWN ARE NOMINAL DIMENSIONS. IT IS THE RESPONSIBILITY OF THE ON-SITE CONTRACTOR OR ROMTEC UTILITIES CUSTOMER (NOT ROMTEC UTILITIES) TO VERIFY THE ACCURACY OF ANY CRITICAL DIMENSIONS OR ELEVATIONS PRIOR TO SETTING OR INSTALLING ANY EQUIPMENT.

VERIFY SCALE
DRAWING SCALE: 1" = 1'-0"
IF NOT FOR THE RECORD
SCALE: AS SHOWN

DATE: 10-7-19

REVISION HISTORY

NO.	DATE	DESCRIPTION	BY	AD
2	12/23/2019	REVISED PER COMMENTS	KB	AD
1	11-19-19	LOWER INVERT, ADD FLOWMETER	KB	AD

DSN: AD
DRN: KB
CKD:

ROMTEC UTILITIES
18240 NORTH BANK ROAD
ROSEBURG, OREGON 97470
PHONE: (541) 496-9678
WWW.ROMTECUTILITIES.COM

MOSSY CREEK PUMP STATION
YOCHA DEHE WINTUN NATION
VALVE VAULT ASSEMBLY
COMPONENT DRAWING

MECHANICAL SHEET
4 OF 4