

ISO VIEW  
SCALE 1 / 30

6' DIAMETER WET WELL  
4" DISCHARGE PIPING  
DUPLEX VAUGHAN PUMPS  
4" 687 VALVE VAULT

**FOR PRODUCTION**

**COLOR LEGEND**

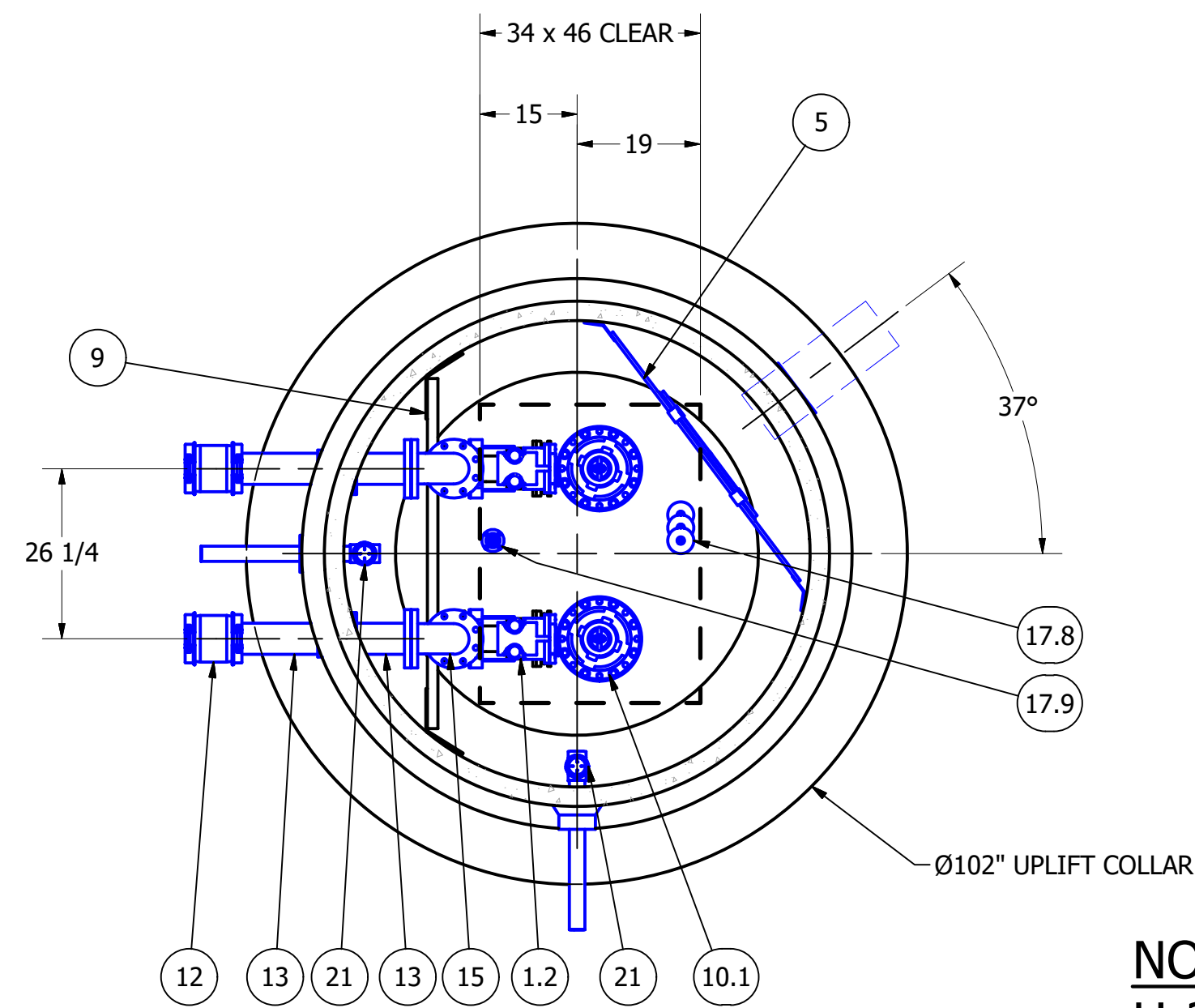
|  |  |
|--|--|
|  | MAJOR CONCRETE COMPONENTS WITH PRE-INSTALLED COMPONENTS.                             |
|  | COMPONENTS PRE-ASSEMBLED TO THE EXTENT POSSIBLE AND WILL NEED TO BE FIELD INSTALLED. |

NOTE: PRE-ASSEMBLY IS DONE AT ROMTEC UTILITIES' DISCRETION AND MAY CHANGE AT THE TIME OF PRODUCTION.

ALL MATERIALS SHOWN ON THIS SHEET WILL BE SUPPLIED BY ROMTEC UTILITIES AND DELIVERED TO THE SITE AFTER THE HOLE HAS BEEN EXCAVATED AND SHORED. THE CONTRACTOR SHALL SUPPLY A CRANE OF SUFFICIENT SIZE TO LOWER ALL THE CONCRETE PIECES INTO THE HOLE SAFELY. THE CONTRACTOR SHALL INSTALL THE WET WELL (AND VALVE VAULT AND METERING VAULT IF APPLICABLE). ROMTEC UTILITIES WILL PROVIDE A REPRESENTATIVE FOR TECHNICAL ASSISTANCE ON THE DAY OF INSTALLATION TO ANSWER ANY QUESTIONS THAT MAY ARISE. THE CONTRACTOR IS RESPONSIBLE FOR ALL PLUMBING AND ELECTRICAL CONNECTIONS AND INSTALLATION. ITEMS NOTED AS "BY OTHERS" WILL BE PROVIDED AND INSTALLED BY THE CONTRACTOR. ROMTEC UTILITIES WILL NOT INSTALL ANY OF THE COMPONENTS SHOWN ON THIS PAGE.



© 2019 ROMTEC INC. ALL RIGHTS RESERVED. THESE PLANS AND DRAWINGS MAY NOT BE REPRODUCED, ADAPTED, OR FURTHER DISTRIBUTED, AND NO COMPONENTS MAY BE CONSTRUCTED FROM THESE PLANS, WITHOUT WRITTEN PERMISSION OF ROMTEC, INC.



SECTION B-B  
SCALE 1 / 24

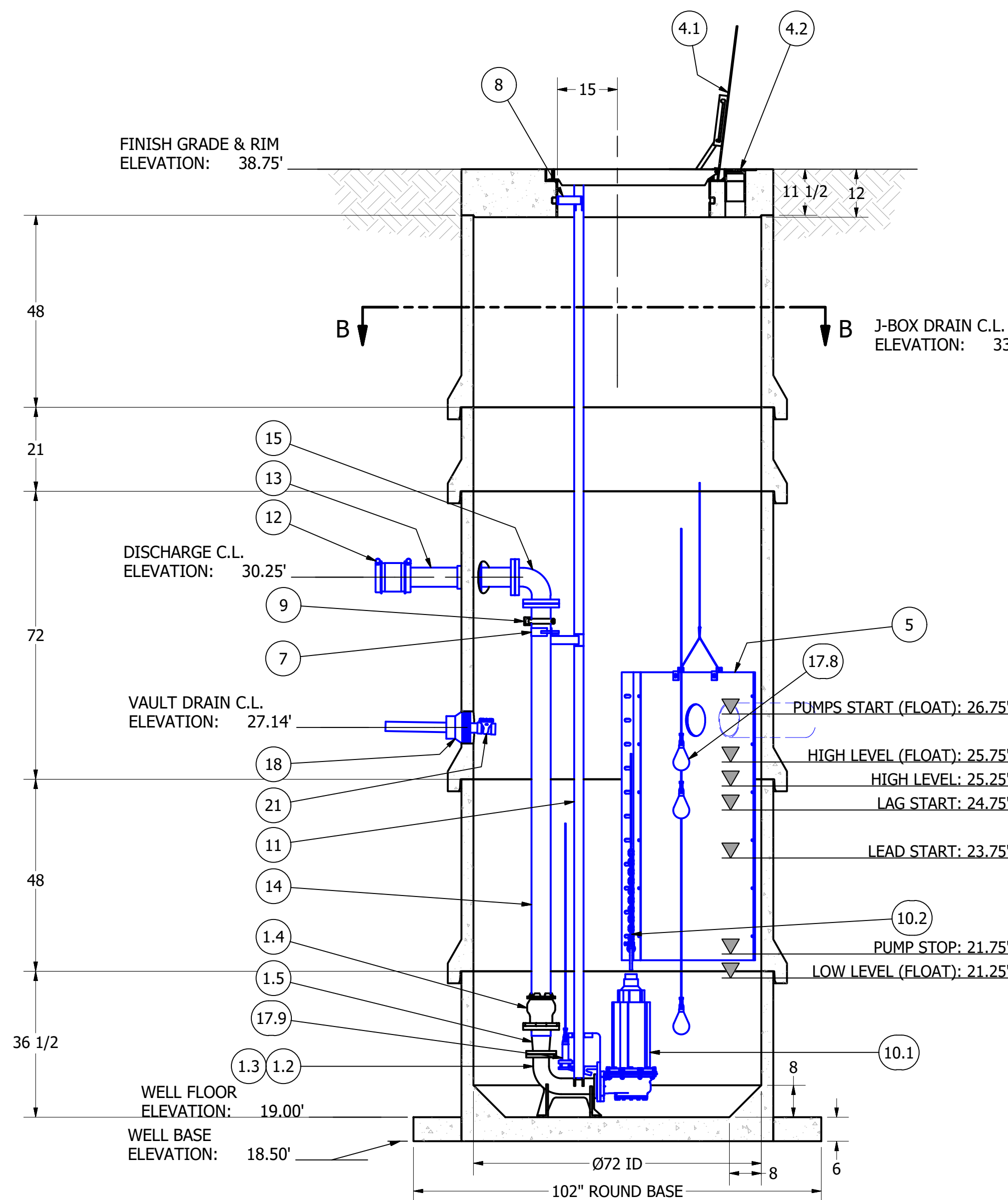
**PRIMARY SENSOR ELEVATION TABLE**

| DESCRIPTION      | ELEVATION | Δ     |
|------------------|-----------|-------|
| INFLUENT INVERT  | 26.94'    | 1.69' |
| HIGH LEVEL ALARM | 25.25'    | 0.50' |
| LAG PUMP START   | 24.75'    | 1.00' |
| LEAD PUMP START  | 23.75'    | 2.00' |
| PUMP STOP        | 21.75'    | 2.75' |
| WELL FLOOR       | 19.00'    |       |

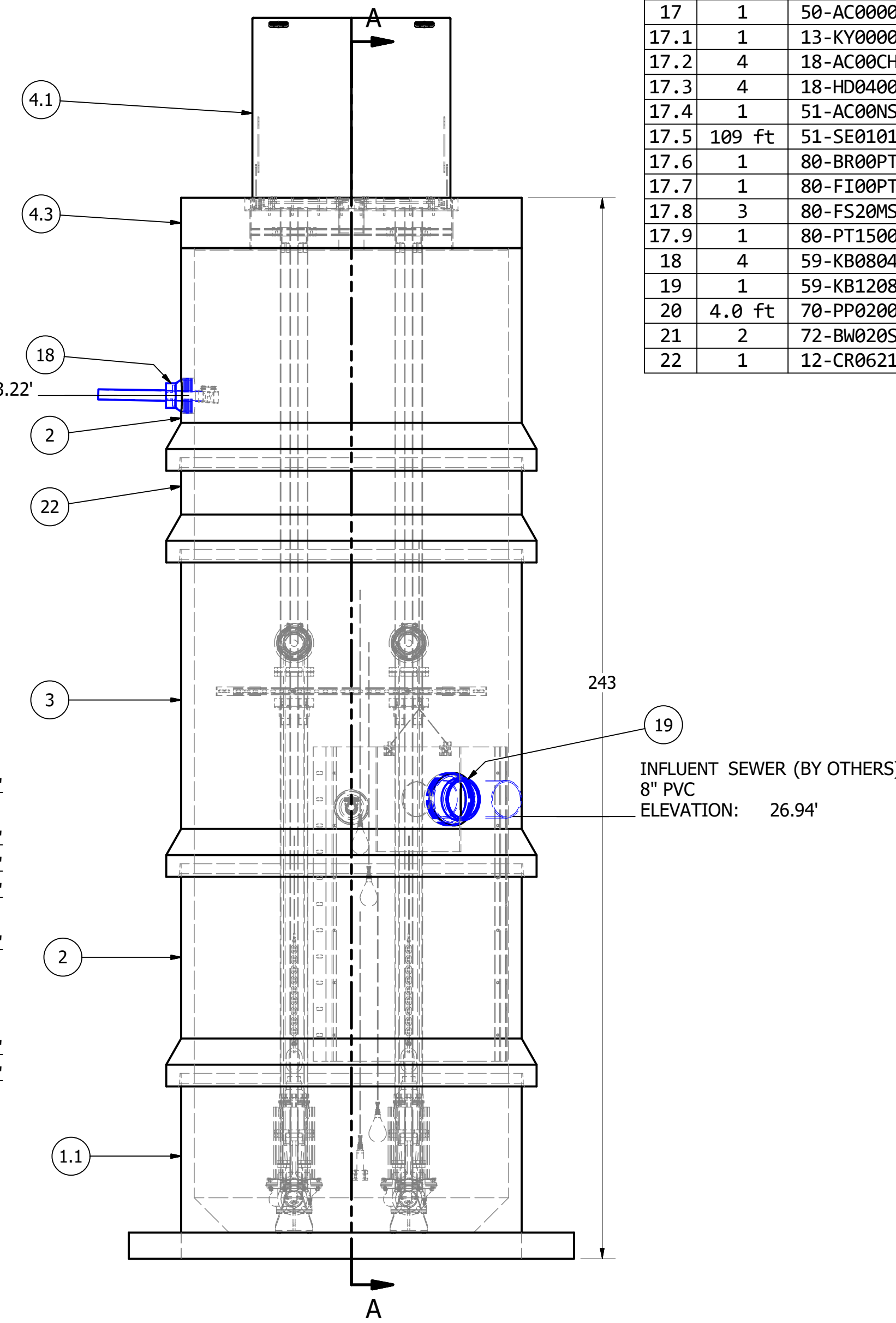
**MISC. ELEVATION TABLE**

| DESCRIPTION         | ELEVATION |
|---------------------|-----------|
| PUMPS START (FLOAT) | 26.75'    |
| HIGH LEVEL (FLOAT)  | 25.75'    |
| LOW LEVEL (FLOAT)   | 21.25'    |

**NOTE: TOP SLAB AND HATCH ARE H-20 OCCASIONAL TRAFFIC RATED**



SECTION A-A  
SCALE 1 / 24



FRONT VIEW  
SCALE 1 / 24

**PARTS LIST**

| ITEM | QTY     | STOCK NUMBER | DESCRIPTION   |
|------|---------|--------------|---|
| 1    | 1       | 10-CB000000  | BASE SLAB ASSEMBLY                                  |
| 1.1  | 1       | 10-CB0636AR  | BASE - WW - 6ft DIA x 3ft H - ARMOROCK              |
| 1.2  | 2       | 31-EL0300VA  | DISCHARGE ELBOW - 3in - VAUGHAN                     |
| 1.3  | 2       | 31-HW00AK56  | ANCHOR KIT - 316SS - DISCHARGE ELBOW                |
| 1.4  | 2       | 44-AD04RMAL  | FLANGE ADAPTER - 4in - ALPHA                        |
| 1.5  | 2       | 48-RD0403DC  | REDUCER - DI - 4in x 3in - CONCENTRIC               |
| 1.6  | 2       | 49-GS030000  | GASKET - FLANGE - 3in                               |
| 2    | 2       | 12-CR0648AR  | BARREL - 6ft DIA x 4ft H - ARMOROCK                 |
| 3    | 1       | 12-CR0672AR  | BARREL - 6ft DIA x 6ft H - ARMOROCK                 |
| 4    | 1       | 14-CT000000  | TOP SLAB ASSEMBLY                                   |
| 4.1  | 1       | 13-HH06HD0U  | HATCH - H20 - 6ft                                   |
| 4.2  | 1       | 13-VT0000AL  | VENT - ALUMINUM - FLUSH                             |
| 4.3  | 1       | 14-CT06HDAR  | TOP SLAB - 6ft DIA - H20 - ARMOROCK                 |
| 5    | 1       | 15-DP060000  | DEFLECTOR PANEL ASSEMBLY - 6ft - 10.5ft CABLE       |
| 6    | 2       | 17-AC38000B  | BOLT KIT - UPPER GUIDE BAR BRACKET                  |
| 7    | 2       | 17-IG0254VA  | BRACKET - 304SS - INTERMEDIATE GUIDE - 2in          |
| 8    | 2       | 17-UG0200VA  | BRACKET - 304SS - UPPER GUIDE BAR - 2in             |
| 9    | 1       | 18-BR000000  | BRACKET ASSEMBLY - 316SS - DISCHARGE SUPPORT        |
| 10   | 1       | 30-PU000000  | PUMP SHIPPING CRATE                                 |
| 10.1 | 2       | 30-PU0000VA  | PUMP - VAUGHAN - SE3F 5HP - 50ft CABLE              |
| 10.2 | 2       | 32-AC0000EB  | LIFTING SLING ASSEMBLY - 20ft TOTAL LENGTH          |
| 10.3 | 2       | 32-CGS0000E  | CABLE SUPPORT GRIP - 304SS - 1in-1.24in             |
| 10.4 | 1       | 32-PL000000  | LIFTING RING - PUMP                                 |
| 11   | 74.0 ft | 40-PP0200S4  | PIPE - 304SS SCH40 - 2in DIA (4 @ 90in, 4 @ 114in)  |
| 12   | 2       | 44-CP040AD0  | COUPLING - 4in - ALPHA                              |
| 13   | 2       | 45-FP040300  | SPOOL - DI - 4in DIA x 30in - FLGxPE                |
| 14   | 2       | 45-FP041080  | SPOOL - DI - 4in DIA x 108in - FLGxPE               |
| 15   | 2       | 46-EL0490DI  | ELBOW - DI - 4in x 90deg - FLGxFLG                  |
| 16   | 4       | 49-GS040000  | GASKET - FLANGE - 4in                               |
| 17   | 1       | 50-AC000000  | WELL SHIPPING CRATE                                 |
| 17.1 | 1       | 13-KY000000  | HATCH KEY   |
| 17.2 | 4       | 18-AC00CH00  | CABLE HANGER ASSEMBLY                               |
| 17.3 | 4       | 18-HD040000  | LIFTING CLUTCH - 4 TON                              |
| 17.4 | 1       | 51-AC00NSTB  | NEVER SIEZE - TUBE                                  |
| 17.5 | 109 ft  | 51-SE0101SL  | JOINT SEALANT - 1in - CONSEAL CS-202                |
| 17.6 | 1       | 80-BR00PT00  | BRACKET - PRESSURE TRANSDUCER - 20ft cable length   |
| 17.7 | 1       | 80-FI00PT00  | DESSICANT FILTER - PRESSURE TRANSDUCER              |
| 17.8 | 3       | 80-FS20MSNL  | FLOAT - 20m - MS1 - NOLTA                           |
| 17.9 | 1       | 80-PT1500EH  | PRESSURE TRANSDUCER - 0-15 PSI - 60ft CABLE - E & H |
| 18   | 4       | 59-KB080400  | KOR-N-SEAL - 8in CORE - 4in thru 1.5in PIPE         |
| 19   | 1       | 59-KB1208DI  | KOR-N-SEAL - 12in CORE x 8in DIPS PIPE              |
| 20   | 4.0 ft  | 70-PP0200P4  | PIPE - PVC SCH40 - 2in DIA                          |
| 21   | 2       | 72-BW0205P8  | BACKWATER VALVE - PVC - 2in                         |
| 22   | 1       | 12-CR0621AR  | BARREL - 6ft DIA x 1.75ft H - ARMOROCK              |

NOTE: CONTRACTOR TO SEAL ALL CONCRETE JOINTS AND PIPE PENETRATIONS WITH NON-SHRINK GROUT

NOTE: ALL DIMENSIONS AND ELEVATIONS SHOWN ARE NOMINAL DIMENSIONS. IT IS THE RESPONSIBILITY OF THE ON-SITE CONTRACTOR OR ROMTEC UTILITIES CUSTOMER (NOT ROMTEC UTILITIES) TO VERIFY THE ACCURACY OF ANY CRITICAL DIMENSIONS OR ELEVATIONS PRIOR TO SETTING OR INSTALLING ANY EQUIPMENT.

**REVISION HISTORY**

| NO. | DATE      | DESCRIPTION                                   |
|-----|-----------|---|
| 7   | 6/20/2019 | MOVE STATION PER UNDERGROUND UTILITIES        |
| 6   | 6/12/2019 | NEW RIM ELEV. 1.75ft TALLER                   |
| 5   | 4/25/2019 | CHANGED J BOX TOP SLAB THICKNESS              |
| 4   | 4/12/2019 | CHANGES TO THE WET WELL FOR WHAT CAN BE BUILT |
| 3   | 4/11/2019 | MINOR CHANGES FOR PRODUCTION LAUNCH           |
| 2   | 3-27-19   | REVISED ELEVATIONS, UPDATED FORWARDING        |
| 1   | 10-9-18   | REVISED ORIENTATION TO MATCH SITE             |

**VERIFY SCALE**

AS SHOWN ON SHEET  
UNLESS OTHERWISE NOTED  
BASE DIMENSIONS ONLY

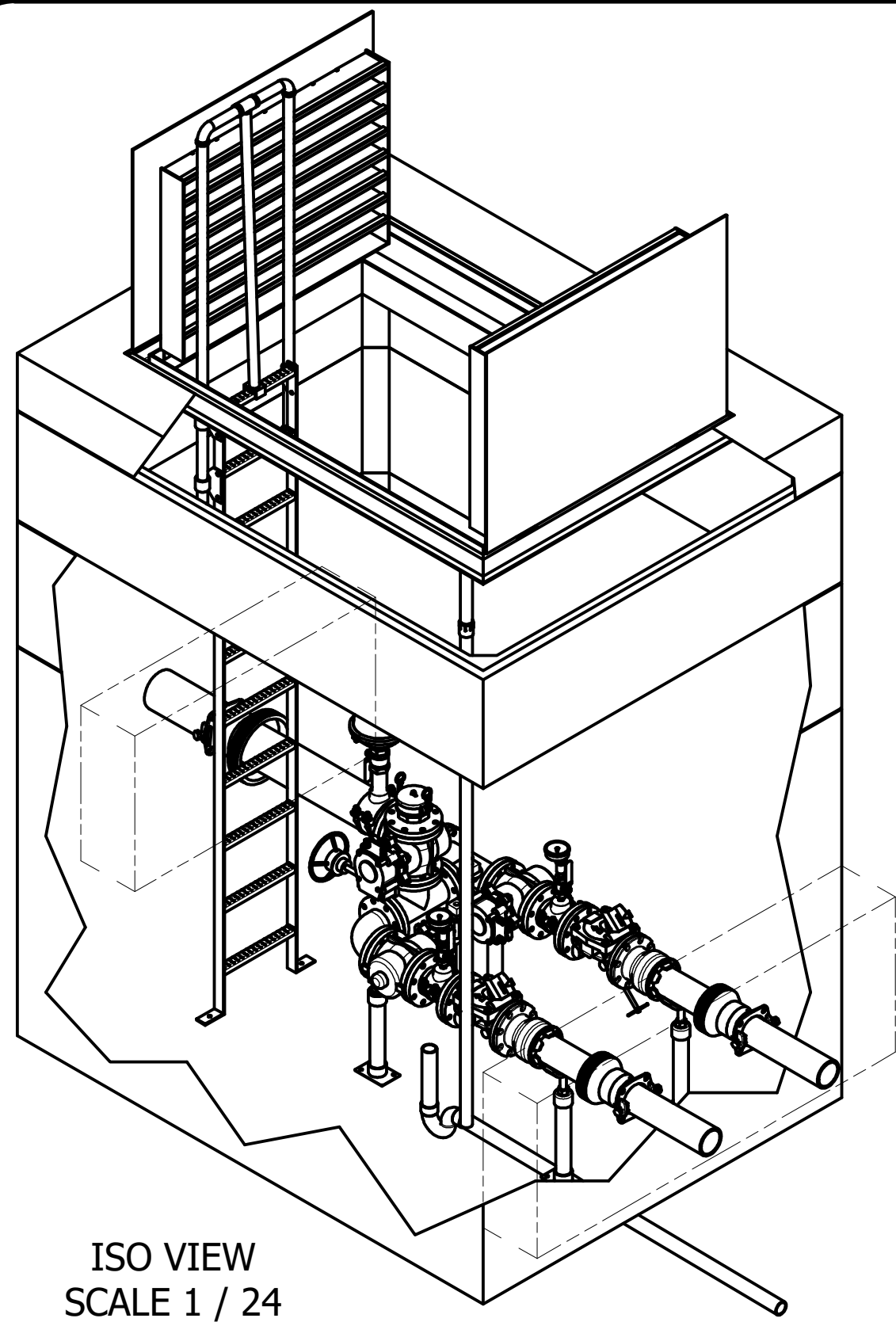
0 1"

DATE: 4-11-18



FASHION VALLEY  
SAN DIEGO, CA  
WET WELL ASSEMBLY  
COMPONENT DRAWING

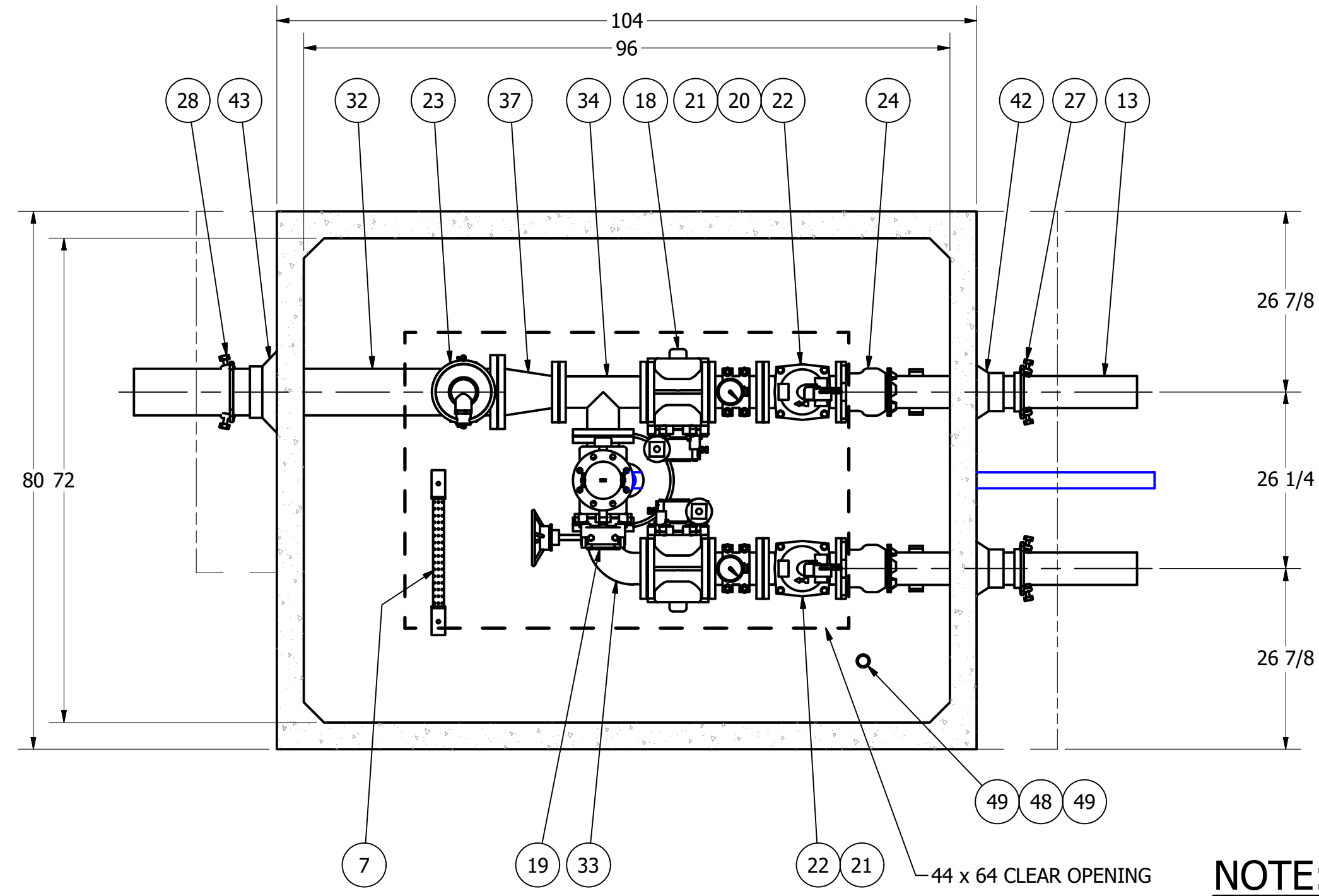




ISO VIEW  
SCALE 1 / 24

**687 VALVE VAULT  
4" PIPING AND VALVES  
ARV, PUMPING PORT, 6" OUTLET**

**FOR PRODUCTION**

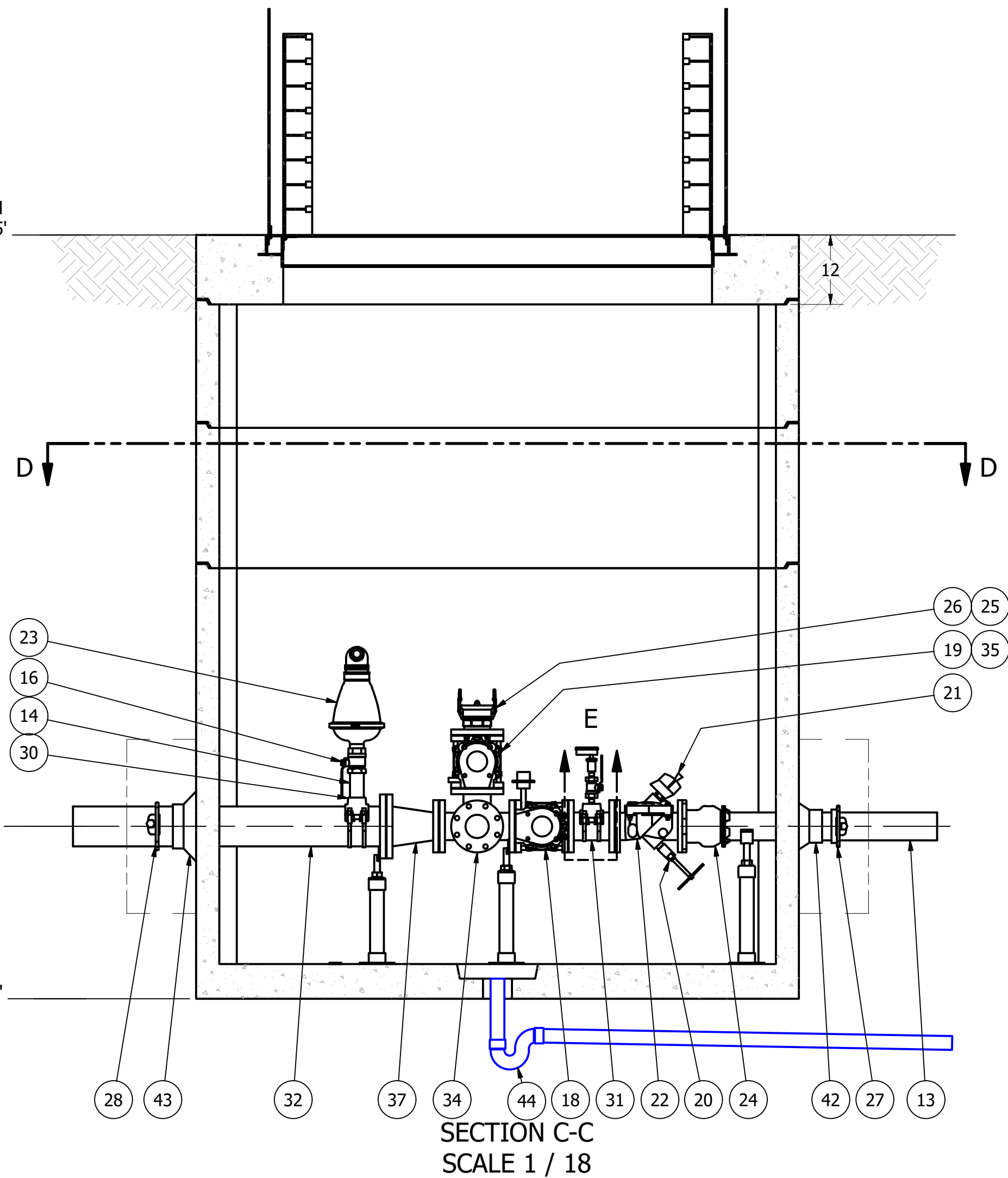


FORCE MAIN (BY OTHERS)  
SIZE: 6"  
TYPE: C.I.

SECTION D-D  
SCALE 1 / 18

12" THICK CAST-IN-PLACE CONCRETE  
THRUST RESTRAINT COLLAR ON EACH END.  
(BY OTHERS)

**NOTE: TOP SLAB AND HATCH ARE  
H-20 OCCASIONAL TRAFFIC RATED**

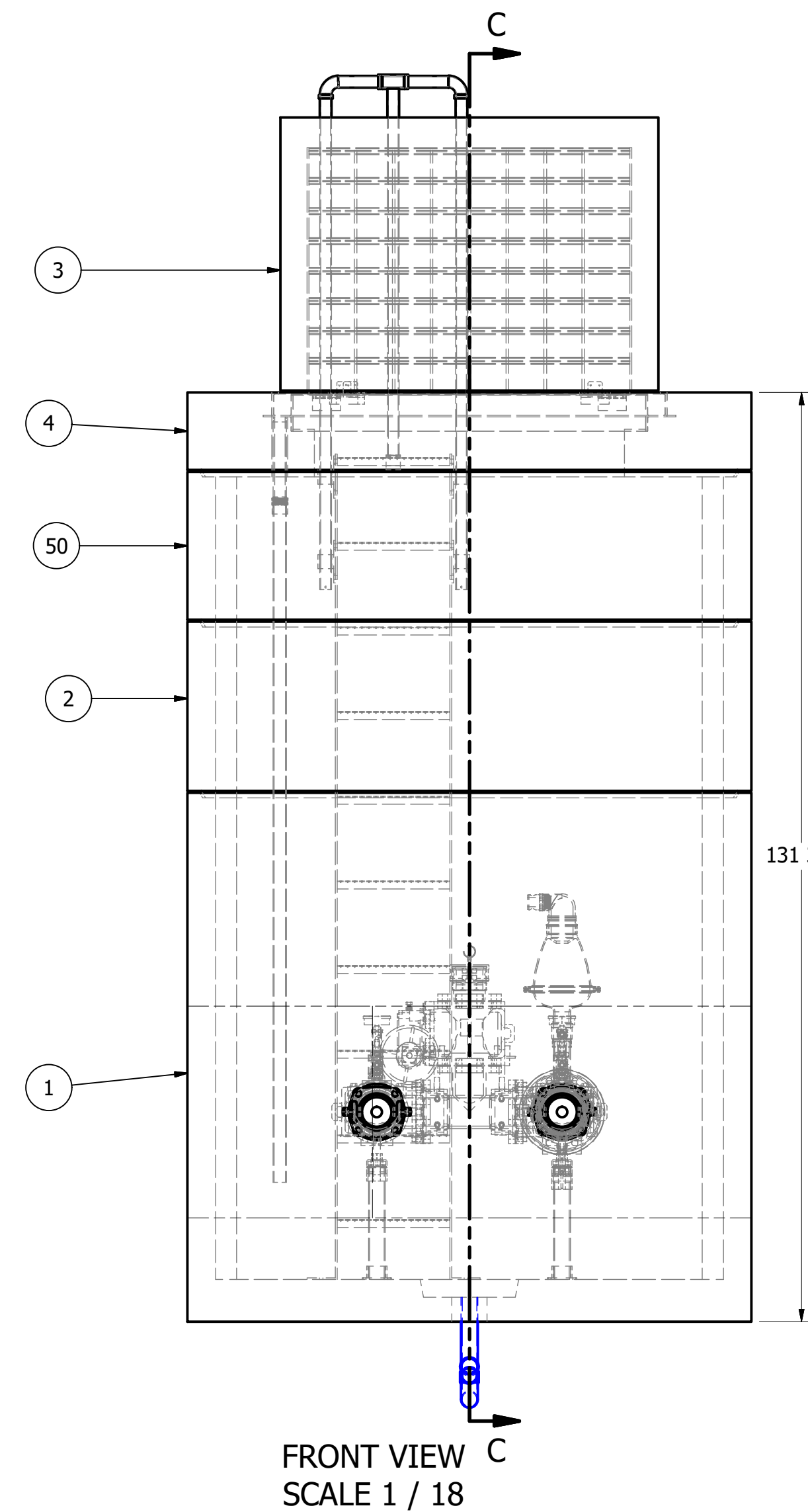


SECTION C-C  
SCALE 1 / 18

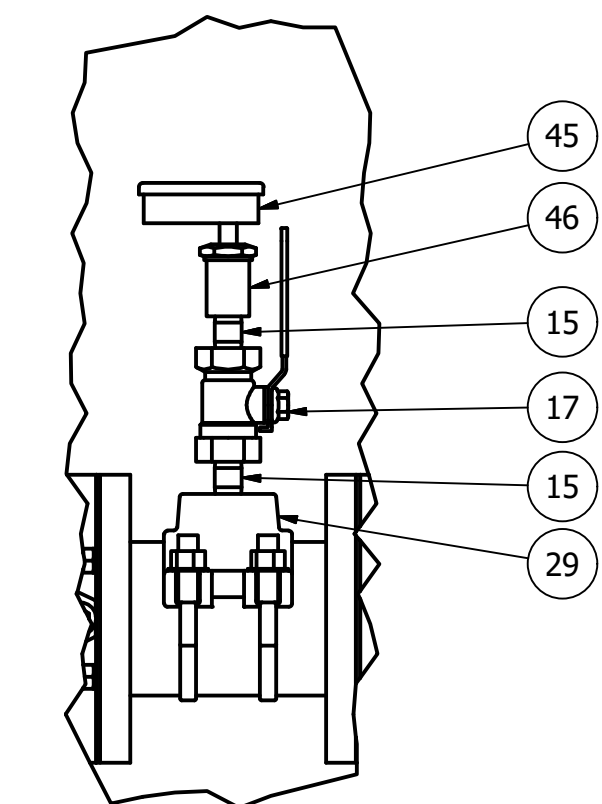
FINISH GRADE & RIM  
ELEVATION: 38.75'

DISCHARGE C.L.  
ELEVATION: 30.25'

VAULT BASE  
ELEVATION: 27.79'



FRONT VIEW  
SCALE 1 / 18



DETAIL E  
SCALE 1 / 6

NOTE: CONTRACTOR TO SEAL ALL CONCRETE JOINTS  
AND PIPE PENETRATIONS WITH NON-SHRINK GROUT

NOTE: ALL DIMENSIONS AND ELEVATIONS SHOWN  
ARE NOMINAL DIMENSIONS. IT IS THE RESPONSIBILITY  
OF THE ON-SITE CONTRACTOR OR ROMTEC UTILITIES  
CUSTOMER (NOT ROMTEC UTILITIES) TO VERIFY THE  
ACCURACY OF ANY CRITICAL DIMENSIONS OR ELEVATIONS  
PRIOR TO SETTING OR INSTALLING ANY EQUIPMENT.

| PARTS LIST |          |              |   |  |
|------------|----------|--------------|---|--|
| ITEM       | QTY      | STOCK NUMBER | DESCRIPTION                                 |  |
| 1          | 1        | 20-CB687000  | BASE - VV - 687                             |  |
| 2          | 1        | 22-CB687024  | RISER - VV - 687 x 2ft                      |  |
| 3          | 1        | 23-HH687GHE  | HATCH - VV - 687 - H20 - SAFETY GRATE       |  |
| 4          | 1        | 24-CT687HD0  | TOP SLAB - VV - 687 - H20                   |  |
| 5          | 1        | 25-KY0000BR  | BRACKET - VALVE KEY                         |  |
| 6          | 1        | 25-KY0000GW  | VALVE KEY - EXTENDABLE GATE WRENCH          |  |
| 7          | 1        | 25-LD011700  | LADDER - ASSEMBLY - 9.75ft                  |  |
| 8          | 2        | 25-PS04RUFL  | PIPE STAND - 304SS - 4in FLANGE             |  |
| 9          | 2        | 25-PS04S92S  | PIPE STAND - 304SS - 4in SADDLE             |  |
| 10         | 1        | 25-PS06RUFL  | PIPE STAND - 304SS - 6in FLANGE             |  |
| 11         | 5        | 25-PS0BBASE  | PIPE STAND BASE - 304SS - 2in - 2 BOLT      |  |
| 12         | 6.3 ft   | 40-PP0200S4  | PIPE - 304SS SCH40 - 2in DIA                |  |
| 13         | 7.0 ft   | 40-PP0400D0  | PIPE - DI - 4in DIA CL52 (2 @ 42in)         |  |
| 14         | 1        | 40-TT0206S4  | NIPPLE - 304SS - 2in DIA x 6in              |  |
| 15         | 4        | 40-TT0H02S4  | NIPPLE - 304SS - 0.5in DIA x 2in            |  |
| 16         | 1        | 41-BV0200S6  | BALL VALVE - 316SS - 2in                    |  |
| 17         | 2        | 41-BV0H00S6  | BALL VALVE - 316SS - 0.5in                  |  |
| 18         | 2        | 41-PV040GD0  | PLUG VALVE - 4in - GEARED OP NUT            |  |
| 19         | 1        | 41-PV040HD0  | PLUG VALVE - 4in - GEARED HANDWHEEL         |  |
| 20         | 1        | 42-AC0400BF  | BACKFLOW ACTUATOR - 4in                     |  |
| 21         | 2        | 42-MI040000  | MECHANICAL INDICATOR - 4in                  |  |
| 22         | 2        | 42-SF0400D0  | CHECK VALVE - SWING FLEX - 4in              |  |
| 23         | 1        | 43-AV020ARI  | VALVE - AIR VACUUM RELEASE - 2in - ARI      |  |
| 24         | 2        | 44-AD04RMAL  | FLANGE ADAPTER - 4in - ALPHA                |  |
| 25         | 1        | 44-CL04S6PM  | CAM LOCK - 316SS - 4in - PLUG x MNPT        |  |
| 26         | 1        | 44-CL04SCAP  | CAM LOCK - 316SS - 4in - SOCKET CAP         |  |
| 27         | 2        | 44-RG040STR  | RETAINER GLAND - 4in - HEAVY DUTY           |  |
| 28         | 1        | 44-RG060STR  | RETAINER GLAND - 6in - HEAVY DUTY           |  |
| 29         | 2        | 44-TS040H00  | TAPPING SADDLE - 4.8in x .5in NPT           |  |
| 30         | 1        | 44-TS060200  | TAPPING SADDLE - 6in PIPE x 2in FNPT        |  |
| 31         | 2        | 45-FF040000  | SPOOL - DI - 4in DIA x 8in - FLGXFLG        |  |
| 32         | 1        | 45-FP060540  | SPOOL - DI - 6in DIA x 54in - FLGXPE        |  |
| 33         | 1        | 46-EL0490DI  | ELBOW - DI - 4in x 90deg - FLGXFLG          |  |
| 34         | 2        | 46-TE0404DI  | TEE - DI - 4in - FLGXFLG                    |  |
| 35         | 1        | 48-FL040FD0  | FLANGE - DI - 4in - BLIND - 4" FNPT TAP     |  |
| 36         | 2        | 48-PL0Q00HX  | PLUG - 304SS - .25in NPT - HEX SOCKET       |  |
| 37         | 1        | 48-RD0604DC  | REDUCER - DI - 6in x 4in - CONCENTRIC       |  |
| 38         | 11       | 49-GS040000  | GASKET - FLANGE - 4in                       |  |
| 39         | 1        | 49-GS060000  | GASKET - FLANGE - 6in                       |  |
| 40         | 101.5 ft | 51-SE0101SL  | JOINT SEALANT - 1in - CONSEAL CS-202        |  |
| 41         | 93 ft    | 51-TC060000  | JOINT WRAP - 6in - TAPECOAT                 |  |
| 42         | 2        | 59-KB080400  | KOR-N-SEAL - 8in CORE - 4in thru 1.5in PIPE |  |
| 43         | 1        | 59-KB1206DI  | KOR-N-SEAL - 12in CORE x 6in DIPS PIPE      |  |
| 44         | 1        | 70-00000000  | DRAIN ASSEMBLY - 2in PVC SCH40              |  |
| 45         | 2        | 81-PG3H00QB  | PRESSURE GAUGE - 3.5in DIA - 30#            |  |
| 46         | 2        | 83-GI0HF0QF  | DIAPHRAGM SEAL - 0.5in FNPT x 0.25in FNPT   |  |
| 47         | 1        | 70-TT1H12P8  | NIPPLE - PVC SCH80 - 1.5in DIA x 12in       |  |
| 48         | 1        | 74-CP1H1H99  | COUPLING - PVC SCH40 - 1.5in - FSLIP x FNPT |  |
| 49         | 8.0 ft   | 70-PP1H00P4  | PIPE - PVC SCH40 - 1.5in DIA                |  |
| 50         | 1        | 22-CB687021  | RISER - VV - 687 x 1.75ft                   |  |

**COLOR LEGEND**

- MAJOR CONCRETE COMPONENTS WITH PRE-INSTALLED COMPONENTS.
- COMPONENTS PRE-ASSEMBLED TO THE EXTENT POSSIBLE AND WILL NEED TO BE FIELD INSTALLED.

NOTE: PRE-ASSEMBLY IS DONE AT ROMTEC UTILITIES' DISCRETION AND MAY CHANGE AT THE TIME OF PRODUCTION.

ALL MATERIALS SHOWN ON THIS SHEET WILL BE SUPPLIED BY ROMTEC UTILITIES AND DELIVERED TO THE SITE AFTER THE HOLE HAS BEEN EXCAVATED AND SHORED. THE CONTRACTOR SHALL SUPPLY A CRANE OF SUFFICIENT SIZE TO LOWER ALL THE CONCRETE PIECES INTO THE HOLE SAFELY. THE CONTRACTOR SHALL INSTALL THE WET WELL (AND VALVE VAULT AND METERING VAULT IF APPLICABLE). ROMTEC UTILITIES WILL PROVIDE A REPRESENTATIVE FOR TECHNICAL ASSISTANCE ON THE DAY OF INSTALLATION TO ANSWER ANY QUESTIONS THAT MAY ARISE. THE CONTRACTOR IS RESPONSIBLE FOR ALL PLUMBING AND ELECTRICAL CONNECTIONS AND INSTALLATION. ITEMS NOTED AS "BY OTHERS" WILL BE PROVIDED AND INSTALLED BY THE CONTRACTOR. ROMTEC UTILITIES WILL NOT INSTALL ANY OF THE COMPONENTS SHOWN ON THIS PAGE.



© 2019 ROMTEC INC. ALL RIGHTS RESERVED. THESE PLANS AND DRAWINGS MAY NOT BE REPRODUCED, ADAPTED, OR FURTHER DISTRIBUTED, AND NO COMPONENTS MAY BE CONSTRUCTED FROM THESE PLANS, WITHOUT WRITTEN PERMISSION OF ROMTEC, INC.

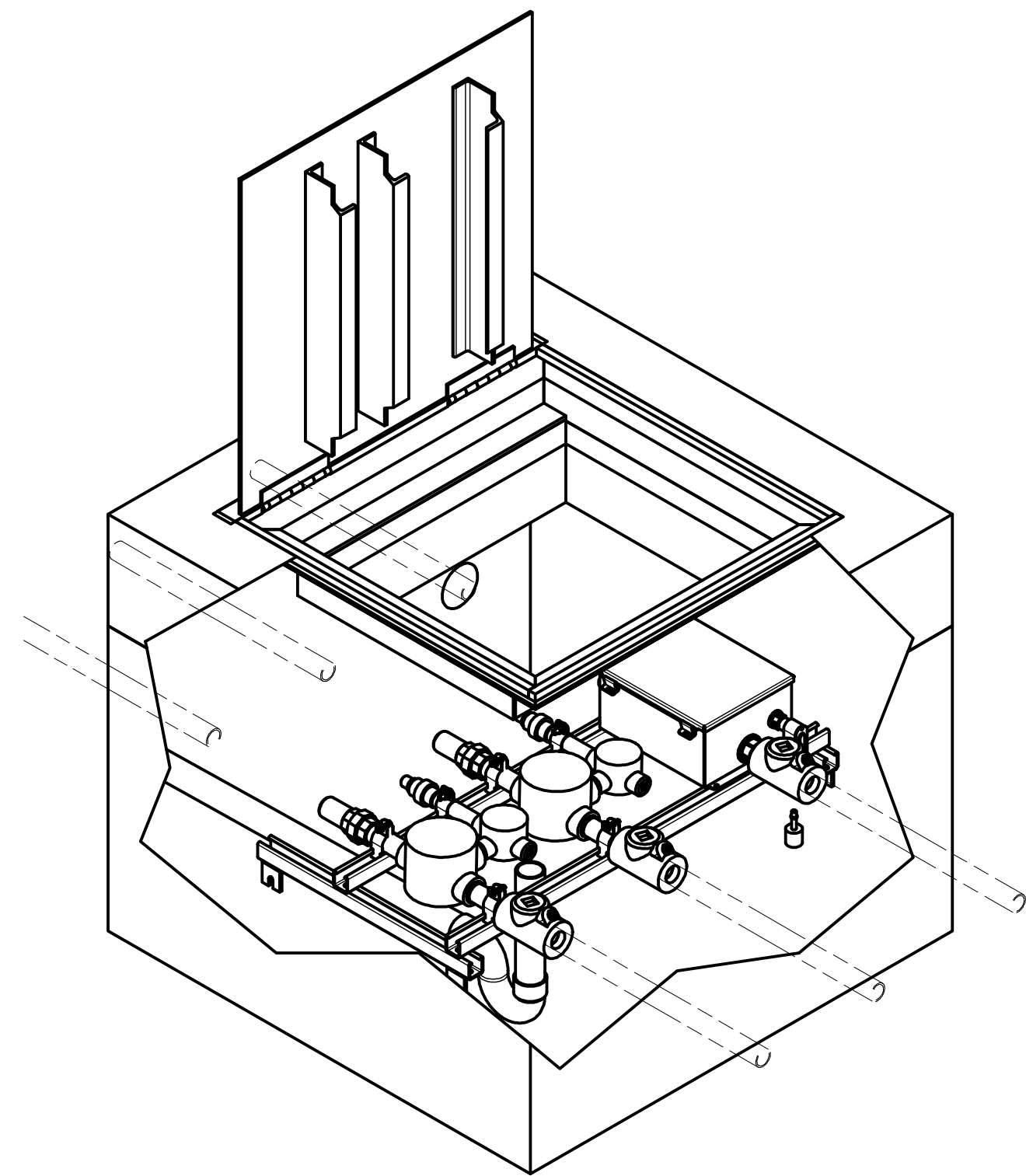
| REV | DATE      | DESCRIPTION                                   |
|-----|-----------|---|
| 6   | 6/12/2019 | NEW RIM ELEV. 1.75ft TALLER                   |
| 5   | 4/25/2019 | CHANGED BOX TOP SLAB THICKNESS                |
| 4   | 4/12/2019 | CHANGES TO THE WET WELL FOR WHAT CAN BE BUILT |
| AD  | 4/11/2019 | MINOR CHANGES FOR PRODUCTION LAUNCH           |
| AD  | 4/11/2019 | REVISED ORIENTATIONS, UPDATED FORWARDING      |
| KB  | 3-27-19   | REVISED ORIENTATIONS TO MATCH SITE            |
| AD  | 10-9-18   | DESCRIPTION                                   |
| BY  |           | REVISION HISTORY                              |

| VERIFY SCALE | DATE    |
|--------------|---------|
| 0            | 4-11-18 |

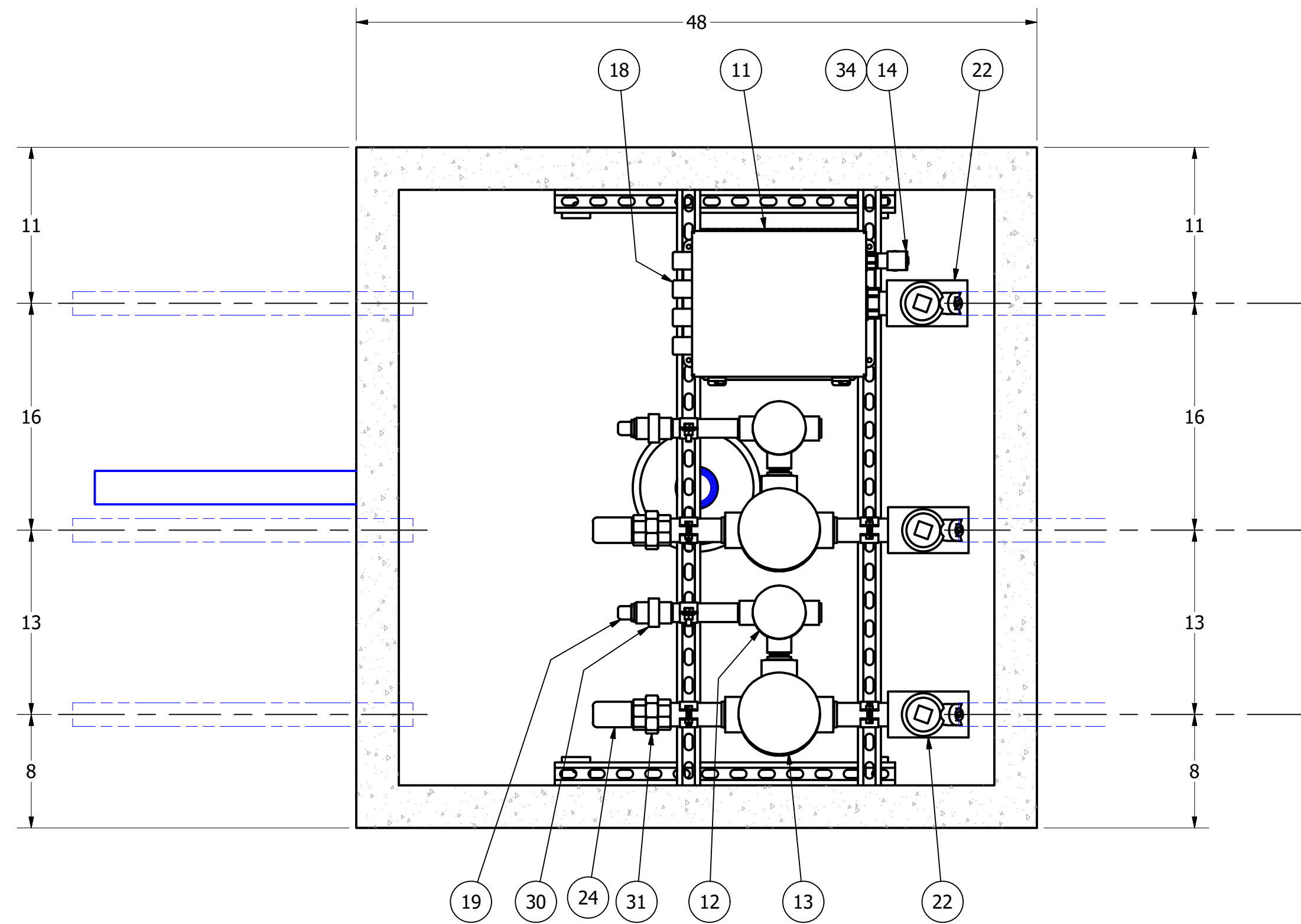
**ROMTEC UTILITIES**  
18240 NORTH BANK ROAD  
ROSEBURG, OREGON 97470  
PHONE: (541) 496-9678  
WWW.ROMTECUTILITIES.COM

FASHION VALLEY  
SAN DIEGO, CA  
VALVE VAULT ASSEMBLY  
COMPONENT DRAWING  
MECHANICAL SHEET  
4 OF 8





ISO VIEW  
SCALE 1 / 12



SECTION G-G  
SCALE 1 / 8

| PARTS LIST |         |              |   |
|------------|---------|--------------|---|
| ITEM       | QTY     | STOCK NUMBER | DESCRIPTION                                   |
| 1          | 2       | 18-AC00000B  | BOLT KIT - 316SS - WALL BRACKET               |
| 2          | 2       | 18-AC01CLS6  | DISCHARGE CLAMP - 316SS - 1in - STRUTMOUNT    |
| 3          | 4       | 18-AC1QCLS6  | DISCHARGE CLAMP - 316SS - 1.25in - STRUTMOUNT |
| 4          | 1       | 20-CB444030  | BASE - VV - 444B X 30in TALL                  |
| 5          | 1       | 23-HH444FHE  | HATCH - FLOODTIGHT - H20 - 24X30              |
| 6          | 1       | 24-CT444HD1  | TOP SLAB -VV - 444 - H20 - 12in THICK         |
| 7          | 4       | 50-BR00JBOX  | WALL BRACKET - 304SS - 2in ANGLE              |
| 8          | 11.0 ft | 50-US0000S6  | UNISTRUT - 316SS - SLOTTED                    |
| 9          | 16 ft   | 51-BT060000  | JOINT WRAP - 6in - BOA TAPE                   |
| 10         | 21 ft   | 51-SE303QSL  | SEALANT - 0.75in - CONSEAL CS-202             |
| 11         | 1       | 61-JB1012SF  | JUNCTION BOX - INTRINS. SAFE - 10in x 12in    |
| 12         | 2       | 61-JBGR100   | CONDUIT OUTLET BOX - 1in - 3-WAY              |
| 13         | 2       | 61-JBGR1H0   | CONDUIT OUTLET BOX - 1.5in - 3-WAY            |
| 14         | 1       | 62-EE0H00RD  | RIGID CONDUIT BODY - .5in - SLB-50            |
| 15         | 2       | 62-EP010CPG  | CONDUIT PLUG - 1in                            |
| 16         | 2       | 62-EP010HRB  | CONDUIT BUSHING - 1in x .5in                  |
| 17         | 1       | 62-EP0H0HUB  | MYERS HUB - .5in                              |
| 18         | 5       | 62-EP0HGLND  | CABLE CONNECTOR - .5in                        |
| 19         | 2       | 62-EP0HGLND  | CABLE GLAND - .5in                            |
| 20         | 2       | 62-EP1H01RB  | CONDUIT BUSHING - 1.5in x 1in                 |
| 21         | 4       | 62-EP1H1QRB  | CONDUIT BUSHING - 1.5in x 1.25in              |
| 22         | 3       | 62-EP1Q0CS0  | CONDUIT SEAL-OFF - 1.25in                     |
| 23         | 1       | 62-EP1Q0HUB  | MYERS HUB - 1.25in                            |
| 24         | 2       | 62-EP01GLND  | CABLE GLAND - 1in                             |
| 25         | 2       | 62-TT010600  | NIPPLE - RIGID - 1in DIA x 6in                |
| 26         | 2       | 62-TT010C00  | NIPPLE - RIGID - 1in DIA x CLOSE              |
| 27         | 1       | 62-TT0H0100  | NIPPLE - RIGID - 0.5in DIA x 1in              |
| 28         | 1       | 62-TT1Q0200  | NIPPLE - RIGID - 1.25in DIA x 2in             |
| 29         | 4       | 62-TT1Q0500  | NIPPLE - RIGID - 1.25in DIA x 5in             |
| 30         | 2       | 62-UN010000  | CONDUIT UNION - 1in                           |
| 31         | 2       | 62-UN1Q0400  | CONDUIT UNION - 1.25in DIA                    |
| 32         | 4.0 ft  | 70-PP0200P4  | PIPE - PVC SCH40 - 2in DIA                    |
| 33         | 1       | 76-EL02PT40  | ELBOW - PVC DWV - 2in - P-TRAP                |
| 34         | 1       | 85-FSFPIS15  | FLOAT SWITCH - LD-FPI-SS15                    |

**COLOR LEGEND**

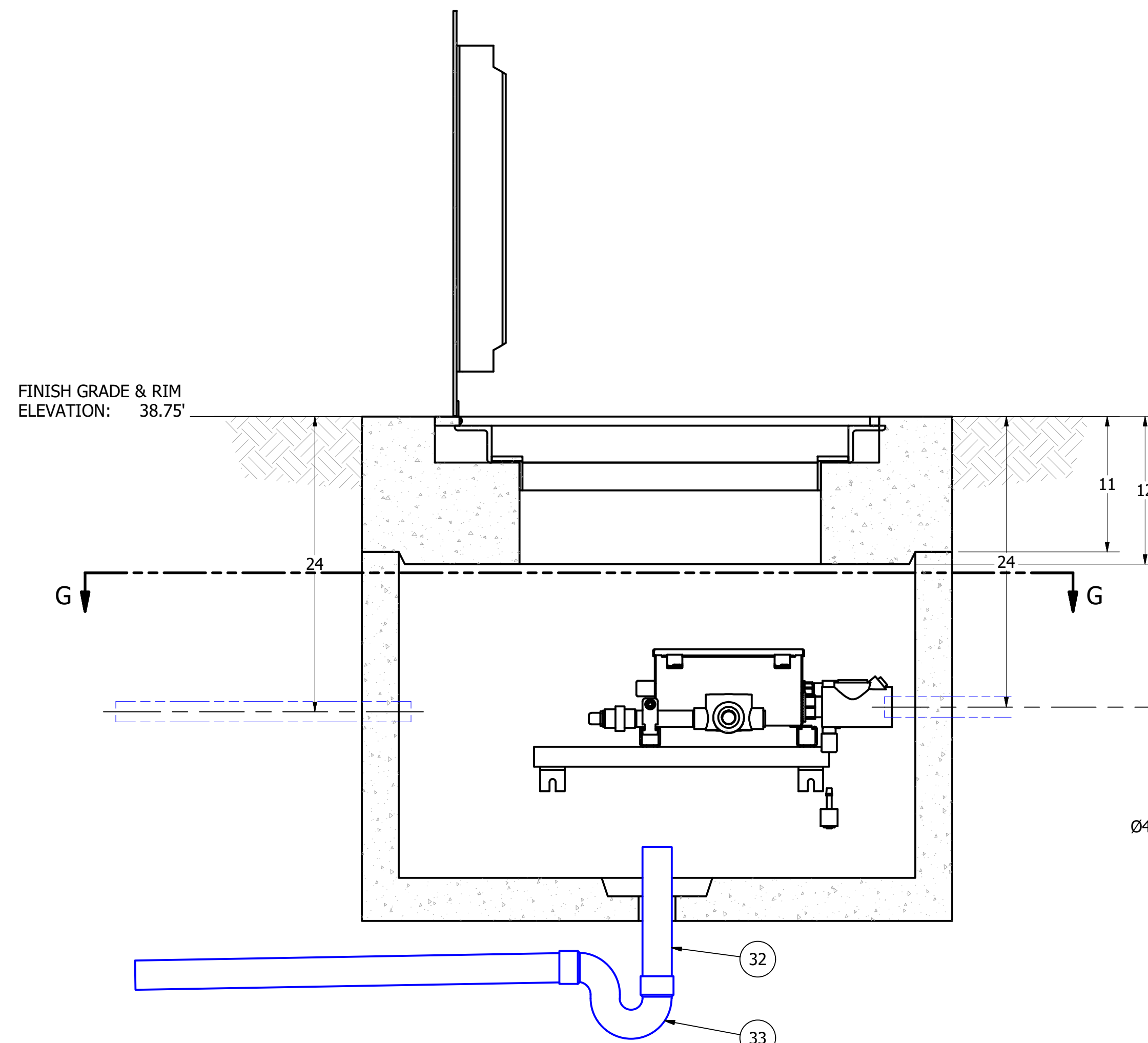
- MAJOR CONCRETE COMPONENTS WITH PRE-INSTALLED COMPONENTS.
- COMPONENTS PRE-ASSEMBLED TO THE EXTENT POSSIBLE AND WILL NEED TO BE FIELD INSTALLED.

NOTE: PRE-ASSEMBLY IS DONE AT ROMTEC UTILITIES' DISCRETION AND MAY CHANGE AT THE TIME OF PRODUCTION.

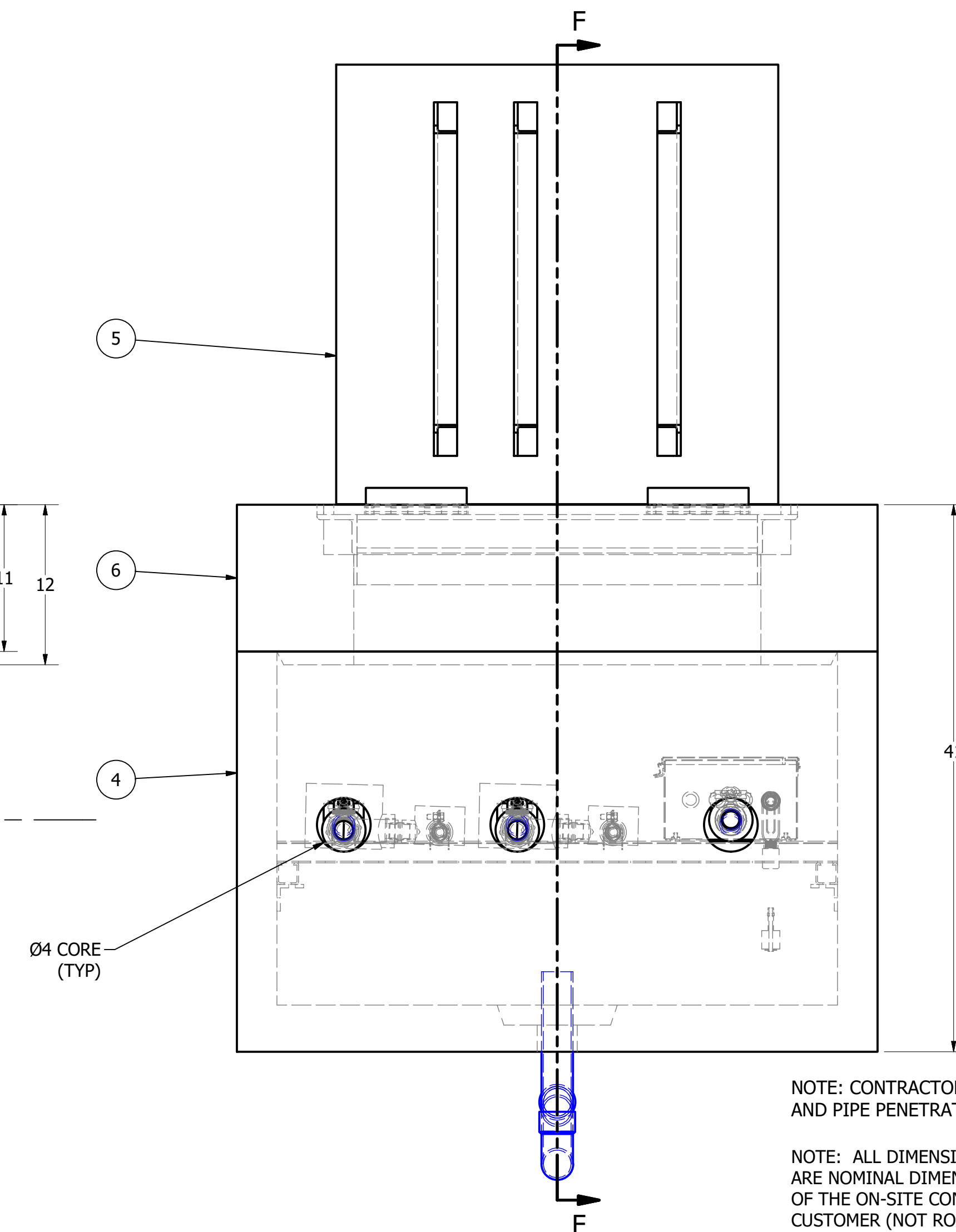
ALL MATERIALS SHOWN ON THIS SHEET WILL BE SUPPLIED BY ROMTEC UTILITIES AND DELIVERED TO THE SITE AFTER THE HOLE HAS BEEN EXCAVATED AND SHORED. THE CONTRACTOR SHALL SUPPLY A CRANE OF SUFFICIENT SIZE TO LOWER ALL THE CONCRETE PIECES INTO THE HOLE SAFELY. THE CONTRACTOR SHALL INSTALL THE WET WELL (AND VALVE VAULT AND METERING VAULT IF APPLICABLE). ROMTEC UTILITIES WILL PROVIDE A REPRESENTATIVE FOR TECHNICAL ASSISTANCE ON THE DAY OF INSTALLATION TO ANSWER ANY QUESTIONS THAT MAY ARISE. THE CONTRACTOR IS RESPONSIBLE FOR ALL PLUMBING AND ELECTRICAL CONNECTIONS AND INSTALLATION. ITEMS NOTED AS "BY OTHERS" WILL BE PROVIDED AND INSTALLED BY THE CONTRACTOR. ROMTEC UTILITIES WILL NOT INSTALL ANY OF THE COMPONENTS SHOWN ON THIS PAGE.



© 2019 ROMTEC INC. ALL RIGHTS RESERVED. THESE PLANS AND DRAWINGS MAY NOT BE REPRODUCED, ADAPTED, OR FURTHER DISTRIBUTED, AND NO COMPONENTS MAY BE CONSTRUCTED FROM THESE PLANS, WITHOUT WRITTEN PERMISSION OF ROMTEC, INC.



SECTION F-F  
SCALE 1 / 8



NOTE: CONTRACTOR TO SEAL ALL CONCRETE JOINTS AND PIPE PENETRATIONS WITH NON-SHRINK GROUT

NOTE: ALL DIMENSIONS AND ELEVATIONS SHOWN ARE NOMINAL DIMENSIONS. IT IS THE RESPONSIBILITY OF THE ON-SITE CONTRACTOR OR ROMTEC UTILITIES CUSTOMER (NOT ROMTEC UTILITIES) TO VERIFY THE ACCURACY OF ANY CRITICAL DIMENSIONS OR ELEVATIONS PRIOR TO SETTING OR INSTALLING ANY EQUIPMENT.

| REV | DATE      | DESCRIPTION                                   |
|-----|-----------|---|
| 6   | 6/12/2019 | NEW RIM ELEV. 1.75ft TALLER                   |
| 5   | 4/25/2019 | CHANGED J BOX TOP SLAB THICKNESS              |
| 4   | 4/12/2019 | CHANGES TO THE WET WELL FOR WHAT CAN BE BUILT |
| 3   | 4/11/2019 | MINOR CHANGES FOR PRODUCTION LAUNCH           |
| 2   | 3-27-19   | REVISED ELEVATIONS, UPDATED FORWARDING        |
| 1   | 10-9-18   | REVISED ORIENTATION TO MATCH SITE             |

| VERIFY SCALE | DATE    |
|--------------|---------|
| 0            | 4-11-18 |

**ROMTEC UTILITIES**  
18240 NORTH BANK ROAD  
ROSEBURG, OREGON 97470  
PHONE: (541) 496-9678  
WWW.ROMTECUTILITIES.COM

FASHION VALLEY  
SAN DIEGO, CA  
JUNCTION BOX ASSEMBLY  
COMPONENT DRAWING  
MECHANICAL SHEET  
5 OF 8