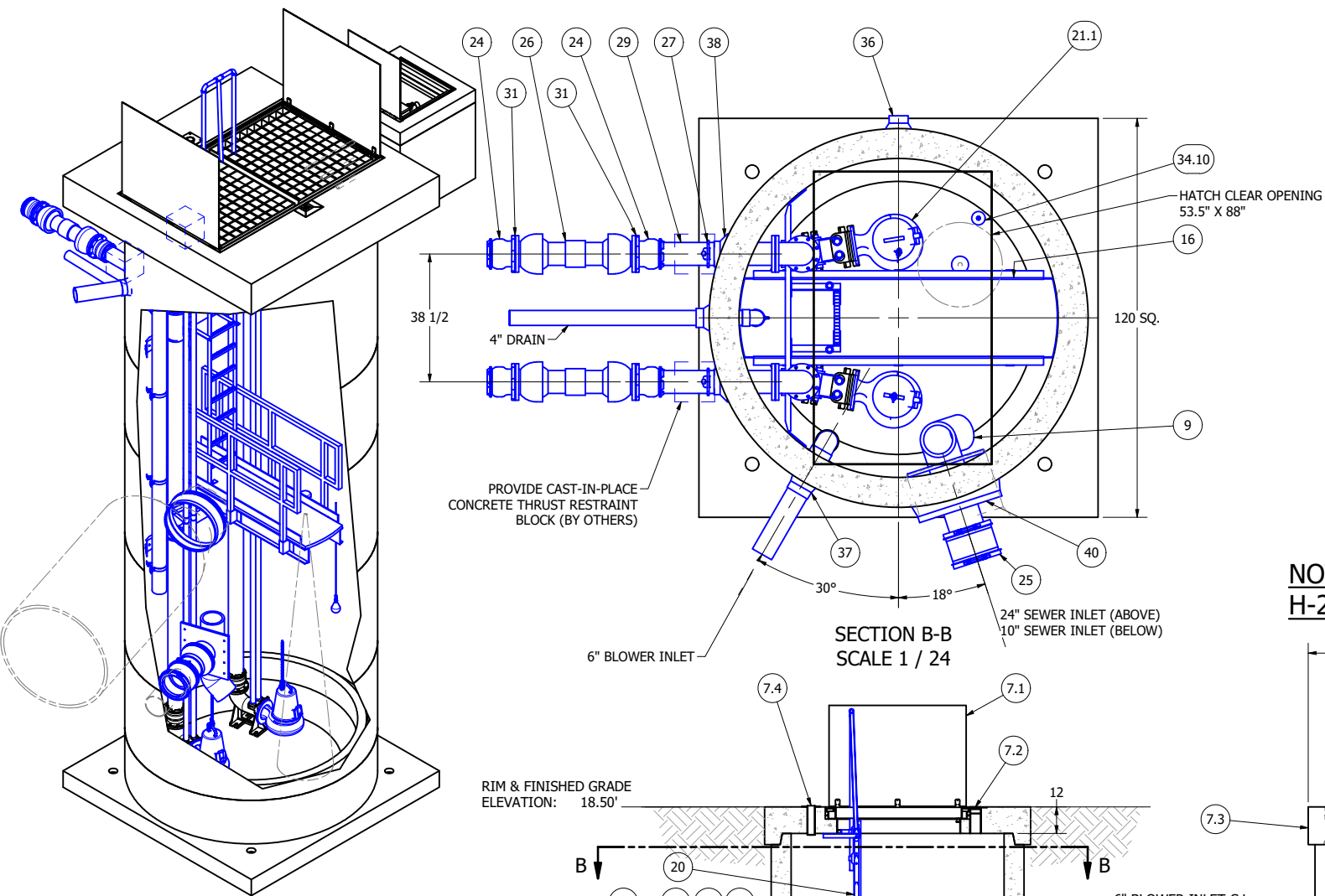


# 2.02 MECHANICAL PLANS

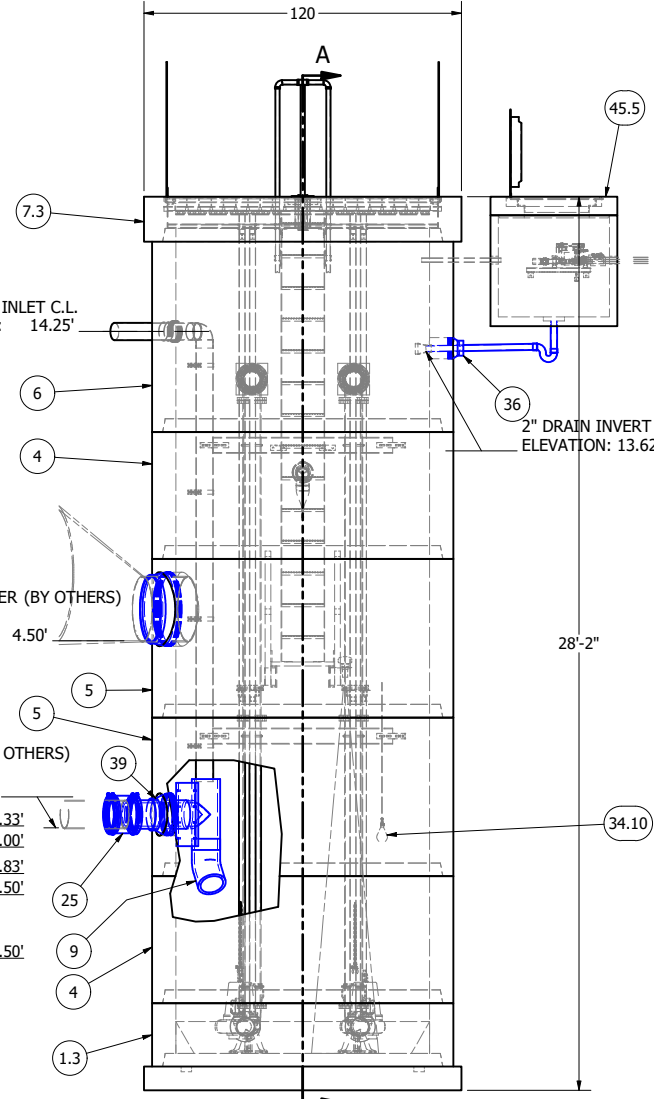


PRIMARY SENSOR ELEVATION TABLE		
DESCRIPTION	ELEVATION	Δ
INFLUENT INVERT	-1.39'	
HIGH LEVEL ALARM	-2.00'	0.83'
LAG PUMP START	-2.83'	0.67'
LEAD PUMP START	-3.50'	2.00'
PUMP STOP	-5.50'	3.00'
WELL FLOOR	-8.50'	

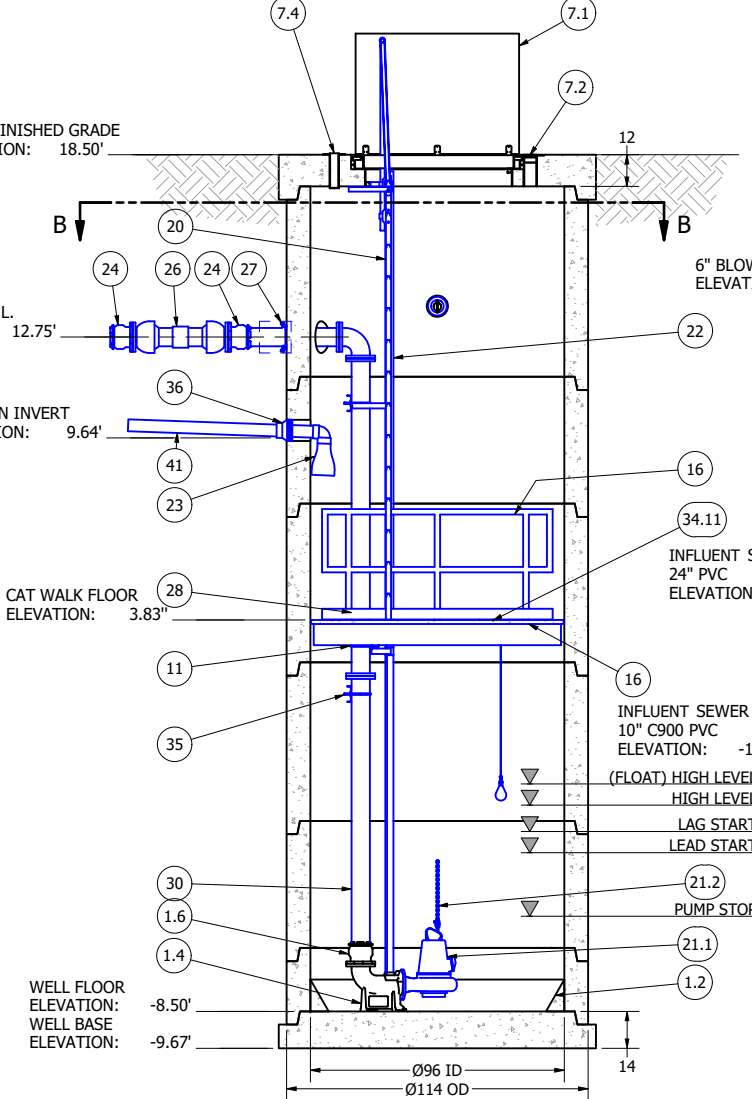
MISC. ELEVATION TABLE	
DESCRIPTION	ELEVATION
HIGH LEVEL (FLOAT)	-1.33'

PARTS LIST				
ITEM	QTY	STOCK NUMBER	DESCRIPTION	
1	1	10-CB000000	BASE SLAB ASSEMBLY	
1.1	1	10-CB0812CP	BASE - W - 8ft DIA x 12in - 10ftx10ft UPLIFT	
1.2	1	10-GR080000	GROUT RING - 8ft DIA	
1.3	1	12-CR0824CP	BARREL - 8ft DIA x 2ft H	
1.4	2	31-EL0600FL	DISCHARGE ELBOW - 6in - FLYGT	
1.5	2	31-HW00AKS6	ANCHOR KIT - 316SS - DISCHARGE ELBOW	
1.6	2	44-AD06RMAL	FLANGE ADAPTER - 6in - ALPHA	
2	1	11-LC0800EX	COATING - EXTERIOR - 8ft DIA - TNEC 46H-413	
3	1	11-LC0800IN	COATING - INTERIOR - 8ft DIA	
4	2	12-CR0848CP	BARREL - 8ft DIA x 4ft H	
5	2	12-CR0860CP	BARREL - 8ft DIA x 5ft H	
6	1	12-CR0872CP	BARREL - 8ft DIA x 6ft H	
7	1	14-CT000000	TOP SLAB ASSEMBLY	
7.1	1	13-HH10HDE	HATCH - H20 - 10ft - DUPLEX	
7.2	1	13-VT0000AL	VENT - ALUMINUM - FLUSH	
7.3	1	14-CT10HD99	TOP SLAB - 8ft DIA - H20 - DUPLEX - CUSTOM	
7.4	1	16-CB999999	CRANE SOCKET - CUSTOM	
7.5	6.7 ft	50-US0000S6	UNISTRUT - 316SS - SLOTTED	
8	4	15-BR06S5S5	BRACKET - 316SS - 6in PIPE	
9	1	15-DB999999	INLET DROP ASSEMBLY - 10in HDPE - SEE NOTE	
10	2	17-AC38000B	BOLT KIT - UPPER GUIDE BAR BRACKET	
11	2	17-IG02S6FL	BRACKET - 316SS - INTERMEDIATE GUIDE BAR - 2in	
12	1	17-UG0200FL	BRACKET - 316SS - UPPER GUIDE BAR - 2in - RH	
13	1	17-UG0200FL	BRACKET - 316SS - UPPER GUIDE BAR - 2in - LH	
14	4	18-AC00001B	WALL BRACKET - DISCHARGE SUPPORT	
15	2	18-BR999999	CHANNEL - FRP - 6in	
16	1	18-MZ999999	MEZZANINE - FRP	
17	1	20-VV000000	VALVE VAULT ASSEMBLY	
18	1	25-BR999999	UPPER LADDER MOUNT - WET WELL	
19	2	25-BR999999	MIDDLE LADDER MOUNT - WET WELL	
20	1	25-LD140000	LADDER - 14ft - ALUMINUM	
21	1	30-PU000000	PUMP SHIPPING CRATE	
21.1	2	30-PU0000FL	PUMP - FLYGT NP3127MT	
21.2	2	32-AC0000FL	PUMP LIFTING SLING - 316SS - CHAIN ONLY X 27'	
21.3	2	32-CGS5000D	CABLE SUPPORT GRIP - 304SS - 0.75in-0.99in	
21.4	1	32-PLGE0000	GRIP EYE UNIT	
22	100.0 ft	40-PP0200S6	PIPE - 316SS SCH40 - 2in DIA (4 @ 180 & 4 @ 120)	
23	1	42-TF040000	CHECK VALVE - TIDFLEX - 4in	
24	4	44-AD06RMAL	FLANGE ADAPTER - 6in - ALPHA	
25	1	44-CP100AD0	COUPLING - 10in - ROMAC ALPHA	
26	2	44-CP999999	FLEX-TEND - 6in DIA x 36in LENGTH - FLGXFLG	
27	2	44-RG060STR	RETAINER GLAND - 6in - HEAVY DUTY	
28	2	45-FF061200	SPOOL - DI - 6in DIA x 120in - FLGXFLG	
29	2	45-FP060420	SPOOL - DI - 6in DIA x 42in - FLGXPE	
30	2	45-FP061080	SPOOL - DI - 6in DIA x 108in - FLGXPE	
31	4	45-SC0600QS	SPACER - STEEL - 6in DIA X .25in	
32	2	46-EL0690DI	ELBOW - DI - 6in x 90deg - FLGXFLG	
33	6	49-GS060000	GASKET - FLANGE - 6in	
34	1	50-AC000000	WELL SHIPPING CRATE	
34.1	1	13-KY000000	HATCH KEY	
34.2	4	18-AC00CH00	CABLE HANGER ASSEMBLY - 316SS	
34.3	4	18-HD080000	LIFTING CLUTCH - 8 TON	
34.4	1	51-AC00NSTB	NEVER SIEZE - TUBE	
34.5	150 ft	51-JWCS2120	JOINT WRAP - 12in - CONSEAL CS-212	
34.6	1	51-SECS1800	SEALANT - BUCKET - CONSEAL CS-1800	
34.7	14	51-SECS1900	SEALANT - TUBE - CONSEAL CS-1900	
34.8	210 ft	51-SECS231S	SEALANT - 1in x .75in - CONSEAL CS-231	
34.9	1	80-BRPBLUSI	BRACKET - TRANSMITTER - SITRAN PROBE LU	
34.10	1	80-FS20MSNL	FLOAT - 20m - MS1 - NOLTA	
34.11	1	80-UTPBLUSI	ULTRASONIC TRANSMITTER - SITRAN PROBE LU	
35	4	50-HW06UBLT	U BOLT - 316SS - FOR 6in SCH40 PIPE	
36	2	59-KB080400	KOR-N-SEAL - 8in CORE - 4in thru 1.5in PIPE	
37	1	59-KB0806P0	KOR-N-SEAL - 8in CORE x 6in PVC PIPE	
38	2	59-KB1206DI	KOR-N-SEAL - 12in CORE x 6in DIPS PIPE	
39	1	59-KB161000	KOR-N-SEAL - 16in CORE x 10in PIPE	
40	1	59-KB282400	KOR-N-SEAL - 28in CORE x 24in PIPE	
41	6.0 ft	70-PP0400P4	PIPE - PVC SCH40 - 4in DIA	
42	16.9 ft	70-PP0600DR	PIPE - PVC SDR35 - 6in DIA	
43	1	76-EL049040	ELBOW - PVC SCH40 - 4in x 90deg - SLIP	
44	1	76-EL069035	ELBOW - PVC SDR35 - 6in x 90deg - SLIP	
45	1	99-JB000000	JUNCTION BOX ASSEMBLY	

**NOTE: TOP SLAB AND HATCH ARE H-20 OCCASIONAL TRAFFIC RATED**



**A FRONT VIEW SCALE 1 / 36**



**SECTION A-A SCALE 1 / 36**



**SECTION B-B SCALE 1 / 24**

**8' DIAMETER WET WELL  
6" DISCHARGE PIPING  
NP FLYGT PUMPS  
6" - 687 VAULT  
FOR PRODUCTION**

ALL MATERIALS SHOWN ON THIS SHEET WILL BE SUPPLIED BY ROMTEC UTILITIES AND DELIVERED TO THE SITE AFTER THE HOLE HAS BEEN EXCAVATED AND SHORED. THE CONTRACTOR SHALL SUPPLY A CRANE OF SUFFICIENT SIZE TO LOWER ALL THE CONCRETE PIECES INTO THE HOLE SAFELY. THE CONTRACTOR SHALL INSTALL THE WET WELL (AND VALVE VAULT AND METERING VAULT IF APPLICABLE). ROMTEC UTILITIES WILL PROVIDE A REPRESENTATIVE FOR TECHNICAL ASSISTANCE ON THE DAY OF INSTALLATION TO ANSWER ANY QUESTIONS THAT MAY ARISE. THE CONTRACTOR IS RESPONSIBLE FOR ALL PLUMBING AND ELECTRICAL CONNECTIONS AND INSTALLATION. ITEMS NOTED AS "BY OTHERS" WILL BE PROVIDED AND INSTALLED BY THE CONTRACTOR. ROMTEC UTILITIES WILL NOT INSTALL ANY OF THE COMPONENTS SHOWN ON THIS PAGE.



© 2020 ROMTEC INC. ALL RIGHTS RESERVED. THESE PLANS AND DRAWINGS MAY NOT BE REPRODUCED, ADAPTED, OR FURTHER DISTRIBUTED, AND NO COMPONENTS MAY BE CONSTRUCTED FROM THESE PLANS, WITHOUT WRITTEN PERMISSION OF ROMTEC, INC.

COLOR LEGEND	
<span style="display:inline-block; width:10px; height:10px; background-color:gray; border:1px solid black;"></span>	MAJOR CONCRETE COMPONENTS WITH PRE-INSTALLED COMPONENTS.
<span style="display:inline-block; width:10px; height:10px; background-color:blue; border:1px solid black;"></span>	COMPONENTS PRE-ASSEMBLED TO THE EXTENT POSSIBLE AND WILL NEED TO BE FIELD INSTALLED.

NOTE: PRE-ASSEMBLY IS DONE AT ROMTEC UTILITIES' DISCRETION AND MAY CHANGE AT THE TIME OF PRODUCTION.  
NOTE: ALL DIMENSIONS AND ELEVATIONS SHOWN ARE NOMINAL DIMENSIONS. IT IS THE RESPONSIBILITY OF THE ON-SITE CONTRACTOR OR ROMTEC UTILITIES CUSTOMER (NOT ROMTEC UTILITIES) TO VERIFY THE ACCURACY OF ANY CRITICAL DIMENSIONS OR ELEVATIONS PRIOR TO SETTING OR INSTALLING ANY EQUIPMENT.

**ROMTEC UTILITIES**  
18240 NORTH BANK ROAD  
ROSEBURG, OREGON 97470  
PHONE: (541) 496-9678  
WWW.ROMTECUTILITIES.COM

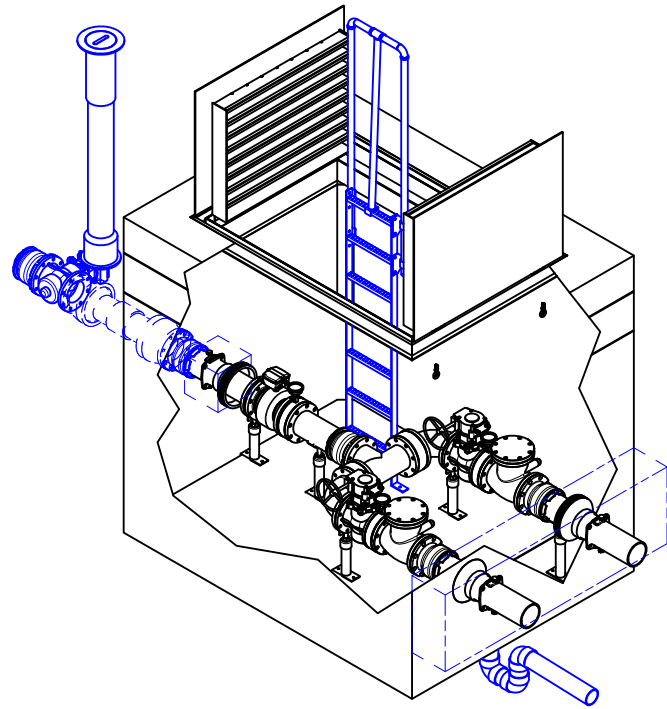
---

**DERMODY TUKWILA DWAZ**  
TUKWILA, WA

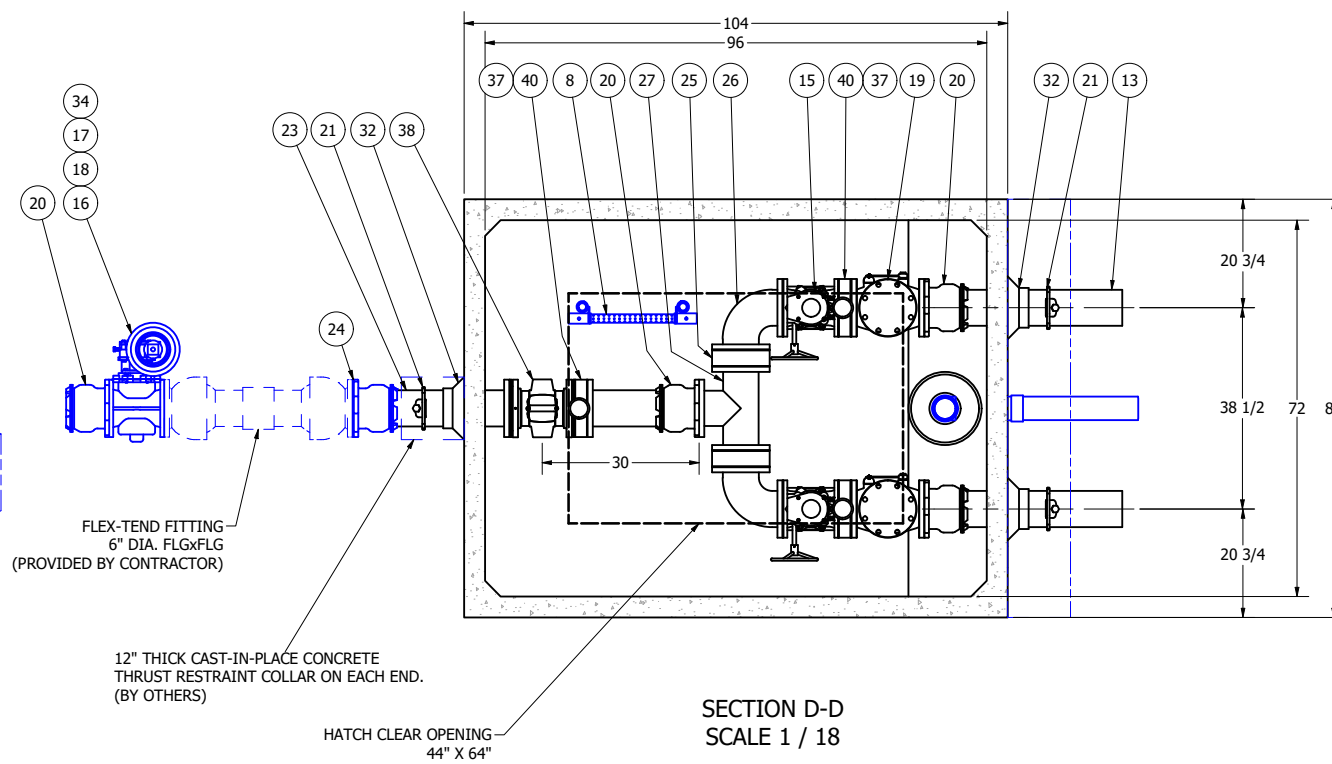
**WET WELL ASSEMBLY COMPONENT DRAWING**

---

MECHANICAL SHEET  
**1 OF 8**



**687 VALVE VAULT  
6" PIPING AND VALVES  
WITH FLOW METER  
FOR PRODUCTION**



SECTION D-D  
SCALE 1 / 18

**NOTE: TOP SLAB AND HATCH ARE  
H-20 OCCASIONAL TRAFFIC RATED**

ITEM	QTY	STOCK NUMBER	DESCRIPTION
1	1	20-CB687000	BASE - W - 687
2	1	20-GR999999	SLOPED FLOOR - GROUT
3	1	22-CB687012	RISER - VV - 687 x 1ft
4	1	23-HH687GHE	HATCH - VV - 687 - H20 - SAFETY GRATE
5	1	24-CT687HD0	TOP SLAB - VV - 687 - H20
6	2	25-KY0000BR	BRACKET - VALVE KEY
7	1	25-KY0000GW	VALVE KEY - EXTENDABLE GATE WRENCH
8	1	25-LD070000	LADDER - ASSEMBLY - 7ft - ALUMINUM
9	6	25-PS06BAPL	PIPE STAND - 316SS - BASE PLATE
10	3	25-PS06S89F	PIPE STAND - 316SS - 6in FLANGE
11	3	25-PS06S92S	PIPE STAND - 316SS - 6in SADDLE
12	5.6 ft	40-PP0200S6	PIPE - 316SS SCH40 - 2in DIA
13	6.0 ft	40-PP0600D0	PIPE - DI - 6in DIA (2 x 3ft)
14	1	41-PV060BDK	PLUG VALVE - 6in - GEARED OP NUT - BURIED - KENNEDY
15	2	41-PV060HDK	PLUG VALVE - 6in - GEARED HANDWHEEL - KENNEDY
16	1	41-VB000BAS	VALVE BOX - BASE
17	1	41-VB000LID	VALVE BOX - LID
18	1	41-VB000TOP	VALVE BOX - TOP
19	2	42-LS0600DK	CHECK VALVE - LEVER & SPRING - 6in - KENNEDY
20	5	44-AD06RML	FLANGE ADAPTER - 6in - ALPHA
21	3	44-RG060STR	RETAINER GLAND - 6in - HEAVY DUTY
22	1	45-FP060200	SPOOL - DI - 6in DIA x 20in - FLGxPE
23	1	45-FP060300	SPOOL - DI - 6in DIA x 30in - FLGxPE
24	1	45-SC0600QS	SPACER - STEEL - 6in DIA X .25in
25	2	45-SC060030	SPACER - STEEL - 6in DIA X 3in
26	2	46-EL0690DI	ELBOW - DI - 6in x 90deg - FLGxFLG
27	1	46-TE0606DI	TEE - DI - 6in - FLGxFLG
28	15	49-GS060000	GASKET - FLANGE - 6in
29	31 ft	51-JWCS2120	JOINT WRAP - 12in - CONSEAL CS-212
30	31 ft	51-SECS231S	SEALANT - 1in x .75in - CONSEAL CS-231
31	2	55-HW0H1HEY	EYE BOLT - .5in X 1.5in - 316SS
32	3	59-KB1206DI	KOR-N-SEAL - 12in CORE x 6in DIPS PIPE
33	4.5 ft	70-PP0400P4	PIPE - PVC SCH40 - 4in DIA
34	4.5 ft	70-PP0600DR	PIPE - PVC SDR35 - 6in DIA
35	3	76-EL049040	ELBOW - PVC SCH40 - 4in x 90deg - SLIP
36	1	81-PG0000PS	PRESSURE SWITCH
37	3	81-PG4H060B	PRESSURE GAUGE - 4.5in x 60psi
38	1	82-FM0651SI	FLOWMETER - 6in - SIEMENS - 5100W
39	2	82-GR060000	GROUNDING RING - 6in
40	3	83-GI069999	ISO RING - 6in - ONYX PSR

NOTE: ALL HARDWARE TO BE 316SS

**COLOR LEGEND**

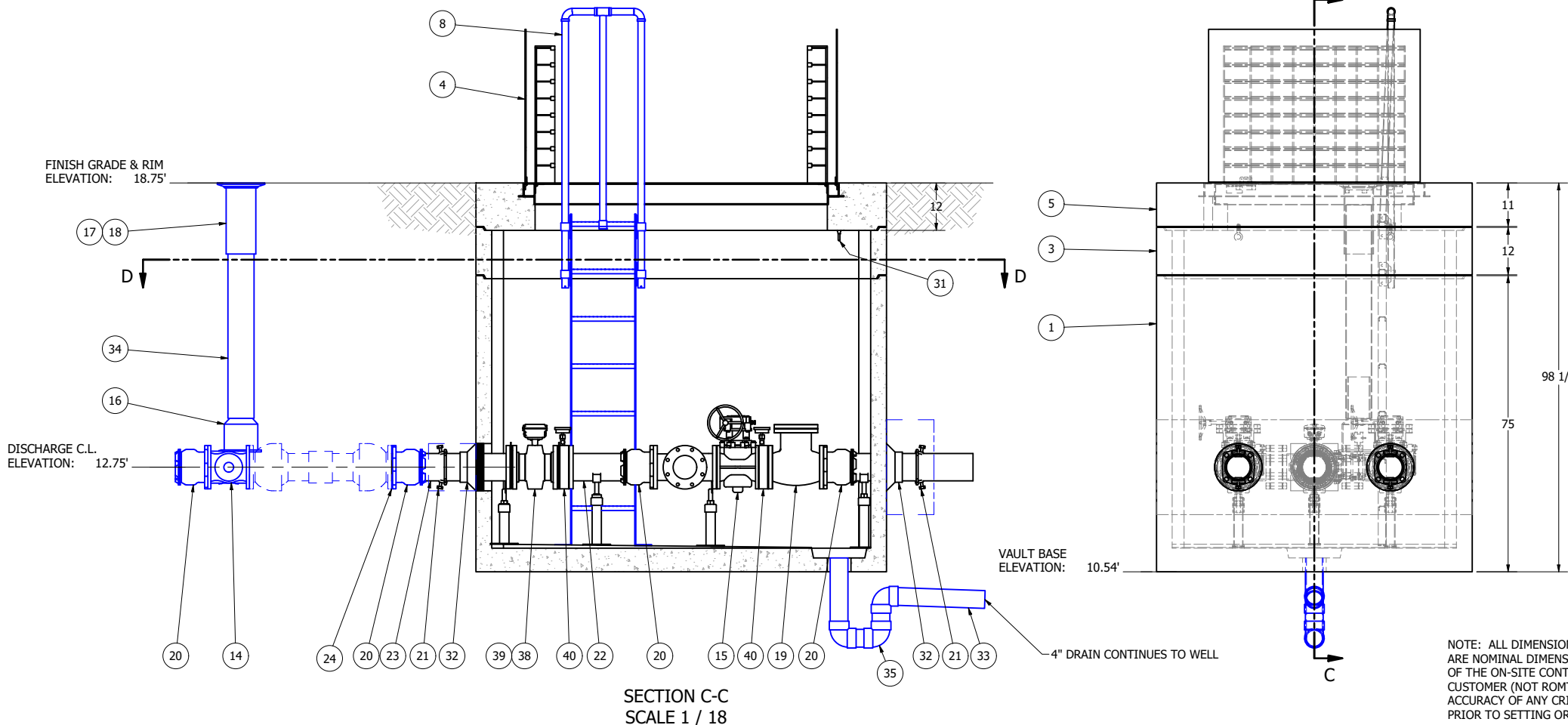
<span style="display:inline-block; width:15px; height:10px; background-color:black; border:1px solid black;"></span>	MAJOR CONCRETE COMPONENTS WITH PRE-INSTALLED COMPONENTS.
<span style="display:inline-block; width:15px; height:10px; background-color:blue; border:1px solid black;"></span>	COMPONENTS PRE-ASSEMBLED TO THE EXTENT POSSIBLE AND WILL NEED TO BE FIELD INSTALLED.

NOTE: PRE-ASSEMBLY IS DONE AT ROMTEC UTILITIES' DISCRETION AND MAY CHANGE AT THE TIME OF PRODUCTION.

ALL MATERIALS SHOWN ON THIS SHEET WILL BE SUPPLIED BY ROMTEC UTILITIES AND DELIVERED TO THE SITE AFTER THE HOLE HAS BEEN EXCAVATED AND SHORED. THE CONTRACTOR SHALL SUPPLY A CRANE OF SUFFICIENT SIZE TO LOWER ALL THE CONCRETE PIECES INTO THE HOLE SAFELY. THE CONTRACTOR SHALL INSTALL THE WET WELL (AND VALVE VAULT AND METERING VAULT IF APPLICABLE). ROMTEC UTILITIES WILL PROVIDE A REPRESENTATIVE FOR TECHNICAL ASSISTANCE ON THE DAY OF INSTALLATION TO ANSWER ANY QUESTIONS THAT MAY ARISE. THE CONTRACTOR IS RESPONSIBLE FOR ALL PLUMBING AND ELECTRICAL CONNECTIONS AND INSTALLATION. ITEMS NOTED AS "BY OTHERS" WILL BE PROVIDED AND INSTALLED BY THE CONTRACTOR. ROMTEC UTILITIES WILL NOT INSTALL ANY OF THE COMPONENTS SHOWN ON THIS PAGE.



© 2020 ROMTEC INC. ALL RIGHTS RESERVED. THESE PLANS AND DRAWINGS MAY NOT BE REPRODUCED, ADAPTED, OR FURTHER DISTRIBUTED, AND NO COMPONENTS MAY BE CONSTRUCTED FROM THESE PLANS, WITHOUT WRITTEN PERMISSION OF ROMTEC, INC.



SECTION C-C  
SCALE 1 / 18

NOTE: ALL DIMENSIONS AND ELEVATIONS SHOWN ARE NOMINAL DIMENSIONS. IT IS THE RESPONSIBILITY OF THE ON-SITE CONTRACTOR OR ROMTEC UTILITIES CUSTOMER (NOT ROMTEC UTILITIES) TO VERIFY THE ACCURACY OF ANY CRITICAL DIMENSIONS OR ELEVATIONS PRIOR TO SETTING OR INSTALLING ANY EQUIPMENT.

REV	DATE	DESCRIPTION	BY
1	11-4-20	REVISED DROP PIPE ASSEMBLY	AD
2	12/4/2020	REVISED PER COMMENTS	KB
3	12/23/2020	LAUNCH DOCS	AD

VERIFY SCALE  
DRAWING SHALL BE PRINTED AT THE SCALE INDICATED ON THIS SHEET. ANY OTHER SCALE SHALL BE NOTED.

DATE: 5-12-20

DSN: AD  
DRN: AD  
CKD: AD

**ROMTEC UTILITIES**  
18240 NORTH BANK ROAD  
ROSEBURG, OREGON 97470  
PHONE: (541) 496-9678  
WWW.ROMTECUTILITIES.COM

DERMODY TUKWILA DWAZ  
TUKWILA, WA

VALVE VAULT ASSEMBLY  
COMPONENT DRAWING

MECHANICAL SHEET  
2 OF 8