

2.03 ELECTRICAL PLANS

GENERAL INFORMATION

- ELECTRICAL SERVICE - 480V, 3 PHASE
- PUMPS - (2) 10HP, 460V, 3PH, 13 FLA, DUPLEX CONFIGURATION
- PUMP MODEL - FLYGT, NP 3127 MT ADAPT
- BLOWER MOTOR - PLASTEC STORM 14, 3HP, 460V, 3PH, 4.8FLA
- PRIMARY CONTROLLER - RUG-5 CONFIGURED FOR DUPLEX OPERATION
- DEVICE MOUNTING - INNER DOOR
- PANEL MOUNTING - FLOOR MOUNT

LEVEL SENSING

- PRIMARY LEVEL SENSING - ULTRASONIC TRANSDUCER WIRED FOR INTRINSICALLY SAFE
- MODEL - SITRANS LU
- SECONDARY LEVEL SENSING - (1) FLOAT WIRED FOR INTRINSICALLY SAFE
- MODEL - NOLTA MS1

PUMP CONFIGURATION

- MANUFACTURER - FLYGT
- MODEL - NP 3127 MT ADAPT
- HP - 10
- NP FLA - 13
- DUPLEX
- CABLE DIA. - 0.87

CONTROL PANEL

- NEMA 3R PAINTED STEEL, 72"H X 72"W X 24"D, 3 POINT LOCKING LATCH
- 12" LEG KIT
- INTERIOR MOUNTED ENCLOSURES
- PHASE MONITOR RELAY
- TRANSIENT VOLTAGE SURE PROTECTION
- HOA SELECTOR SWITCHES
- RUN & FAULT INDICATOR LIGHTS
- ELAPSED TIME METERS
- NEMA STARTERS
- UL LISTED
- FLOW METER

CONTROL OPTIONS

- ALARM BEACON
- REDLION HMI
- INTRUSION BYPASS KEYED SWITCH

COMMUNICATIONS

- CALAMP RADIO MODEM
- YAGI ANTENA

JUNCTION BOX

- TYPE - IN GROUND
- 4' X 4' X 4' WITH DUCTILE IRON HATCH

ELECTRICAL INSTALLATION RECOMMENDATIONS

THE FOLLOWING INFORMATION IS A RECOMMENDATION ONLY. IT IS THE RESPONSIBILITY OF THE INSTALLING CONTRACTOR TO REVIEW ALL AS BUILT SYSTEM INFORMATION AND MAKE THE INSTALLATION AS PER THE NATION ELECTRICAL CODE (NEC).

INSTALL ALL BRANCH CIRCUIT AND/OR FEEDER OVERCURRENT PROTECTION DEVICES IN ACCORDANCE WITH THE NEC.

TABLE 1

DUPLEX LIFT STATION CONTROL PANEL (LCP)			
VOLTS	480	LARGEST HP	10
PHASE	3	LARGEST FLA	14
FREQUENCY	60 HZ	CPT VA	5000
		TOTAL FLA	46.72

NOTE: LARGEST FLA BASED OFF OF TABLE 430.250 PER NEC ARTICLE 430.6(A)(1).

TABLE 2

RECOMMENDED CONDUIT SIZES				
DEVICE	HP	POWER DIA.	CONTROL DIA.	CONDUIT SIZE
PUMP 1	10	0.87	N/A	1-1/4"
PUMP 2	10	0.87	N/A	1-1/4"
TRANSDUCER			.35	1"
FLOAT			.25	

NOTE: ALL CONDUIT CALCULATION BASED ON RIGID METAL CONDUIT (RMC) @ 40% MAXIMUM FILL AS PER THE 2017 NATIONAL ELECTRICAL CODE.

SIZE ALL CONDUIT IN ACCORDANCE WITH THE NEC, OR AS RECOMMENDED, WHICHEVER IS GREATER.

SPECIAL NOTE:

THE ABOVE INFORMATION IS A PRELIMINARY INFORMATION ONLY. IT IS THE INSTALLING CONTRACTOR'S RESPONSIBILITY TO REFERENCE THE ELECTRICAL INSTALLATION DOCUMENTATION TO VERIFY ALL INFORMATION AND TO CONFIRM THAT THE INSTALLATION MEETS THE REQUIREMENTS OF THE NATIONAL ELECTRICAL CODE AND ANY LOCAL CODE REQUIREMENTS.

REV	DATE	DESCRIPTION	REVISION HISTORY

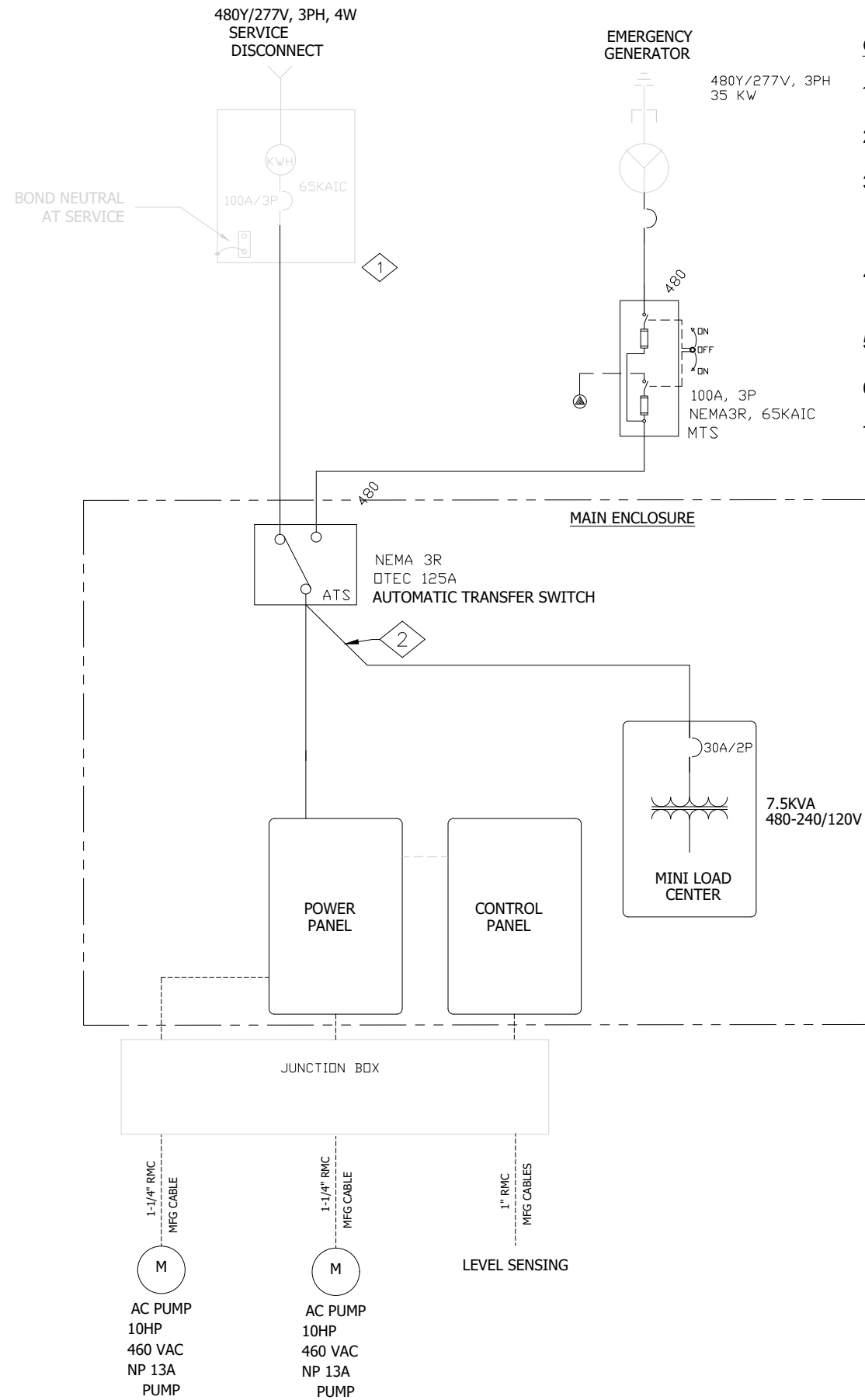
PROJECT #: E0106D10
 DSN: DSN
 DRN: DRN
 CKD: CKD
 DATE: 11/18/20

© 2018 ROMTEC UTILITIES, INC. ALL RIGHTS RESERVED. THESE PLANS AND DRAWINGS MAY NOT BE REPRODUCED, ADAPTED, OR FURTHER DISTRIBUTED, AND NO COMPONENTS MAY BE CONSTRUCTED FROM THESE PLANS, WITHOUT WRITTEN PERMISSION OF ROMTEC UTILITIES, INC.



18240 NORTH BANK ROAD
 ROSEBURG, OREGON 97470
 PHONE: (541) 496-9678
 WWW.ROMTECUTILITIES.COM

DERMODY TUKWILA DWA2
 TUKWILA, WA
 ELECTRICAL NOTES
 DUPLEXLIFT STATION



GENERAL NOTES:

1. PRELIMINARY DRAWINGS AND NOTES PROVIDED FOR ESTIMATING PURPOSES ONLY. NOT FOR CONSTRUCTION.
2. EQUIPMENT SHOWN GRAYED OUT IS SUPPLIED BY OTHERS.
3. ALL ITEMS RELATED TO THE ELECTRICAL SERVICE SUCH AS SERVICE CONDUIT, CONDUCTORS, DUCT, PAD MOUNT, RISERS, PULL BOXES, FITTINGS, PERMITS, FEES, AND PROTECTIVE COVERING FROM THE SERVICE POINT LOCATION SHALL BE VERIFIED WITH THE SERVING UTILITY
4. THE ELECTRICAL CONTRACTOR SHALL INSTALL THE SERVICE IN COMPLIANCE WITH THE SERVING UTILITY, NATIONAL ELECTRICAL CODE, STATE AND LOCAL CODES.
5. THE ELECTRICAL CONTRACTOR SHALL SUPPLY ALL ELECTRICAL CONDUIT, WIRE, FASTENERS AND FITTINGS.
6. THE ELECTRICAL CONTRACTOR SHALL SUPPLY THE UTILITY METER BASE AND METHOD OF MAIN SERVICE DISCONNECT.
7. ROUTE CONTROL WIRING SEPARATE FROM POWER WIRING.

KEYED NOTES:

- 1 INSTALL METHOD OF MAIN SERVICE DISCONNECT OR FEEDER WITH OVERCURRENT PROTECTION FROM EXISTING SOURCE.
- 2 INSTALL PER CEC ARTICLE 240.21(B).

ALTERNATION TABLE

	PUMP 1	PUMP 2
LEAD	●	
LAG		●
	PUMP 1	PUMP 2
STEP 1		
	PUMP 1	PUMP 2
STEP 2	●	

PROJECT #:	EO106010		
DSN:	DSN		
DRN:	DRN		
CKD:	CKD		
REV	DATE	DESCRIPTION	REVISION HISTORY

DATE: 11/18/20

©2018 ROMTEC UTILITIES, INC. ALL RIGHTS RESERVED. THESE PLANS AND DRAWINGS MAY NOT BE REPRODUCED, COPIED, DISTRIBUTED, OR FURTHER DISSEMINATED IN ANY MANNER WITHOUT THE WRITTEN PERMISSION OF ROMTEC UTILITIES, INC.

ROMTEC UTILITIES
 18240 NORTH BANK ROAD
 ROSEBURG, OREGON 97470
 PHONE: (541) 496-9678
 WWW.ROMTECUTILITIES.COM

DERMODY TUKWILA DWAZ
 TUKWILA, WA
 ELECTRICAL NOTES
 DUPLEXLIFT STATION