

**5' DIAMETER WET WELL
3" DISCHARGE PIPING
EBARA**

NOTE:
CONDUIT TO CONTROL PANEL (BY OTHERS)
MINIMUM:
(2) FOR POWER
(1) FOR LEVEL SENSING

COLOR LEGEND

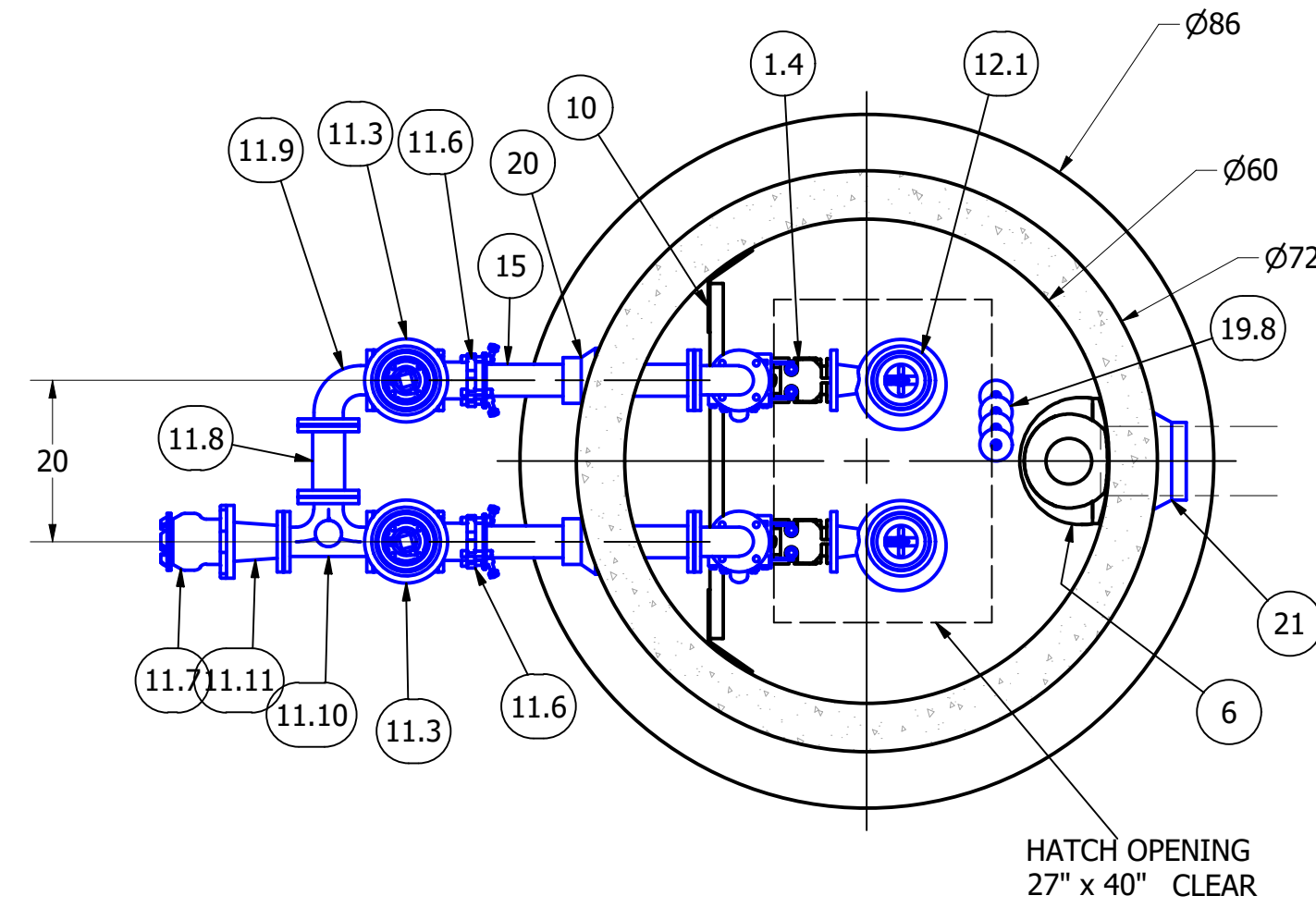
- MAJOR CONCRETE COMPONENTS WITH PRE-INSTALLED COMPONENTS.
- COMPONENTS PRE-ASSEMBLED TO THE EXTENT POSSIBLE AND WILL NEED TO BE FIELD INSTALLED.

NOTE: PRE-ASSEMBLY IS DONE AT ROMTEC UTILITIES' DISCRETION AND MAY CHANGE AT THE TIME OF PRODUCTION.

ALL MATERIALS SHOWN ON THIS SHEET WILL BE SUPPLIED BY ROMTEC UTILITIES AND DELIVERED TO THE SITE AFTER THE HOLE HAS BEEN EXCAVATED AND SHORED. THE CONTRACTOR SHALL SUPPLY A CRANE OF SUFFICIENT SIZE TO LOWER ALL THE CONCRETE PIECES INTO THE HOLE SAFELY. THE CONTRACTOR SHALL INSTALL THE WET WELL (AND VALVE VAULT AND METERING VAULT IF APPLICABLE). ROMTEC UTILITIES WILL PROVIDE A REPRESENTATIVE FOR TECHNICAL ASSISTANCE ON THE DAY OF INSTALLATION TO ANSWER ANY QUESTIONS THAT MAY ARISE. THE CONTRACTOR IS RESPONSIBLE FOR ALL PLUMBING AND ELECTRICAL CONNECTIONS AND INSTALLATION. ITEMS NOTED AS "BY OTHERS" WILL BE PROVIDED AND INSTALLED BY THE CONTRACTOR. ROMTEC UTILITIES WILL NOT INSTALL ANY OF THE COMPONENTS SHOWN ON THIS PAGE.



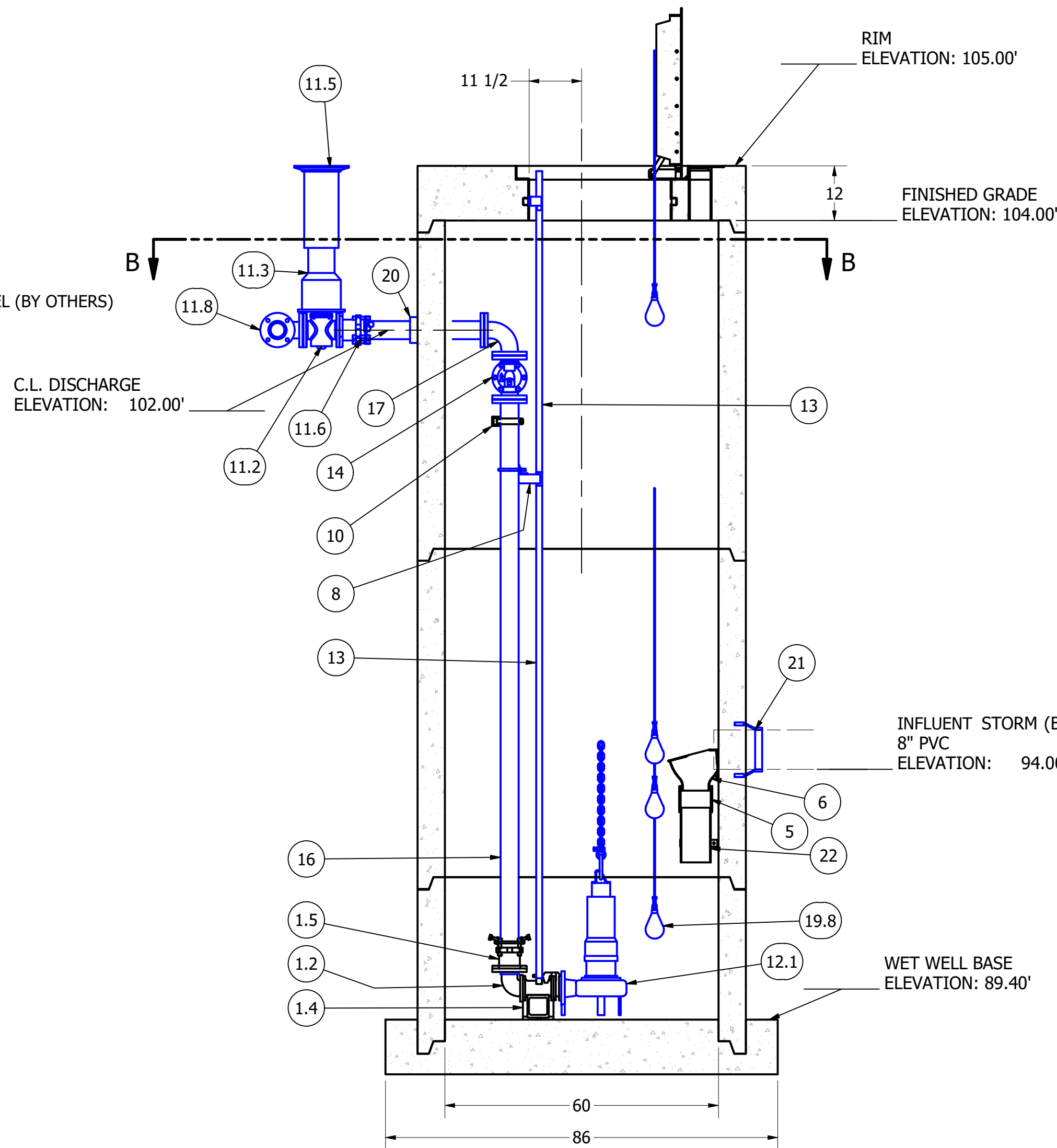
© 2020 ROMTEC INC. ALL RIGHTS RESERVED. THESE PLANS AND DRAWINGS MAY NOT BE REPRODUCED, ADAPTED, OR FURTHER DISTRIBUTED, AND NO COMPONENTS MAY BE CONSTRUCTED FROM THESE PLANS, WITHOUT WRITTEN PERMISSION OF ROMTEC, INC.



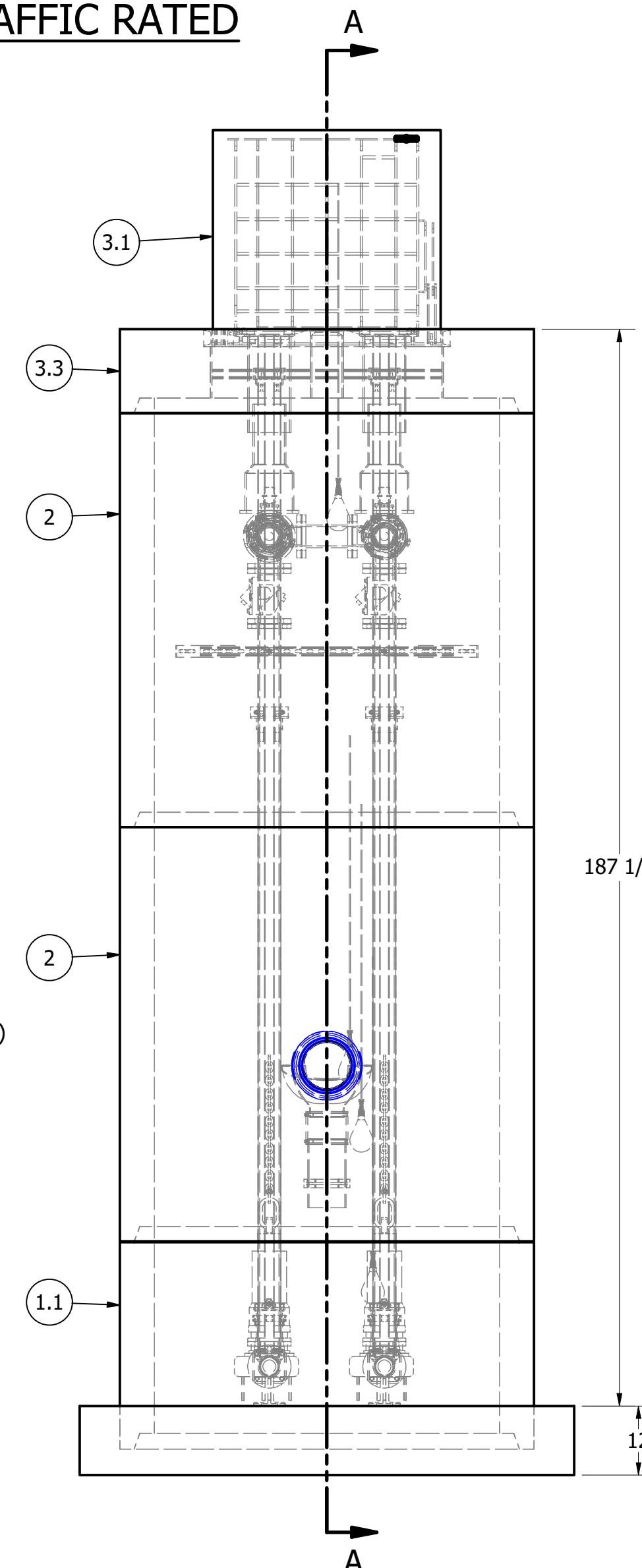
SECTION B-B
SCALE 1/22

**NOTE: TOP SLAB AND HATCH ARE
H-20 OCCASIONAL TRAFFIC RATED**

PRIMARY SENSOR ELEVATION TABLE		
DESCRIPTION	ELEVATION	Δ
INFLUENT INVERT	94.00'	-
HIGH LEVEL ALARM	102.60'	8.0'
LAG PUMP START	94.60'	1.0'
LEAD PUMP START	93.60'	2.20'
PUMP STOP	91.40'	2.0'
WELL FLOOR	89.40'	



SECTION A-A
SCALE 1/22



PARTS LIST			
ITEM	QTY	STOCK NUMBER	DESCRIPTION
1	1	10-CB000000	BASE SLAB ASSEMBLY
1.1	1	10-CB05360W	BASE - WM - 5ft DIA x 36in (WILSONVILLE)
1.2	2	31-EL0303EB	DISCHARGE ELBOW - 3in x 3in - EBARA
1.3	2	31-HW00AKS6	ANCHOR KIT - 316SS - DISCHARGE ELBOW
1.4	2	31-QD03LM6B	QUICK DISCHARGE CONNECTOR - 3in - EBARA LM80
1.5	2	44-AD03RMD0	RFCA - 3in - ROMAC - FBEC w/SS HARDWARE
2	2	12-CR05720W	BARREL - 5ft DIA x 6ft H
3	1	14-CT000000	TOP SLAB ASSEMBLY
3.1	1	13-HH05HD0U	HATCH - H20 - 5ft
3.2	1	13-VT0000AL	VENT - ALUMINUM - FLUSH
3.3	1	14-CT05HD0W	TOP SLAB - 5ft DIA - H20
4	1	15-BR06SS35	BRACKET - 316SS - 6in PIPE
5	1	15-CP060000	COUPLING - FERRECO - 6in
6	1	15-DB410645	DROP BOWL - 4in thru 10in INLET x 6in OUTLET - 4ft - 5ft WET WELL
7	2	17-AC38000B	BOLT KIT - UPPER GUIDE BAR BRACKET
8	2	17-IG0154EB	BRACKET - IGBB - 1in - 304SS - EBARA LM80
9	2	17-UG0154EB	BRACKET - 304SS - UPPER GUIDE BAR - 1in
10	1	18-BR000000	BRACKET ASSEMBLY - 316SS - DISCHARGE SUPPORT
11	1	20-VV000000	VALVE VAULT ASSEMBLY
11.1	1	25-KY0600GW	VALVE KEY - 6ft - GATE WRENCH
11.2	2	41-PV0300D0	PLUG VALVE - 3in - DIRECT OP NUT
11.3	2	41-VB000BAS	VALVE BOX - BASE
11.4	2	41-VB000LID	VALVE BOX - LID
11.5	2	41-VB000TOP	VALVE BOX - TOP
11.6	2	44-AD03RMD0	RFCA - 3in - ROMAC - FBEC w/SS HARDWARE
11.7	1	44-AD04RML	FLANGE ADAPTER - 4in - ALPHA
11.8	1	45-FF03083Q	SPOOL - DI - 3in DIA x 8.75in - FLGxFLG
11.9	1	46-EL0390DI	ELBOW - DI - 3in x 90deg - FLGxFLG
11.10	1	46-TE0303DI	TEE - DI - 3in FLGxFLG
11.11	1	48-RD0403DC	REDUCER - DI - 4in x 3in - CONCENTRIC
11.12	5	49-GS030000	GASKET - FLANGE - 3in
12	1	30-PU000000	PUMP SHIPPING CRATE
12.1	2	30-PU0000EB	PUMP - EBARA 100DLFU62.2 - 3HP
12.2	2	30-PUCABL03	PUMP OPTION: LONG CABLES - 75ft - 3HP
12.3	2	30-PUTRIM00	PUMP OPTION: IMPELLER TRIM - .5HP THRU 5HP
12.4	2	32-AC0000EB	LIFTING ASSEMBLY - SS316 S5 CHAIN - 9/32"
12.5	2	32-CGSS000D	CABLE SUPPORT GRIP - 304SS - 0.75in-0.99in
12.6	1	32-PLGE0000	GRIP EYE UNIT
13	58.0 ft	40-PP0100S4	PIPE - 304SS SCH40 - 1in DIA
14	2	42-SF0300D0	CHECK VALVE - SWING FLEX - 3in
15	2	45-FF030300	SPOOL - DI - 3in DIA x 30in - FLGxPE
16	2	45-FF031260	SPOOL - DI - 3in DIA x 126in - FLGxPE
17	2	46-EL0390DI	ELBOW - DI - 3in x 90deg - FLGxFLG
18	6	49-GS030000	GASKET - FLANGE - 3in
19	1	50-AC000000	WELL SHIPPING CRATE
19.1	1	13-KY000000	HATCH KEY
19.2	4	18-AC00CH00	CABLE HANGER ASSEMBLY - 316SS
19.3	4	18-HD040000	LIFTING CLUTCH - 4 TON
19.4	1	51-AC00NSTB	NEVER SIEZE - TUBE
19.5	60 ft	51-JWCS2120	JOINT WRAP - 12in - CONSEAL CS-212
19.6	3	51-SECS1900	SEALANT - TUBE - CONSEAL CS-1900
19.7	60 ft	51-SECS231S	SEALANT - 1in x .75in - CONSEAL CS-231
19.8	4	80-FS20MSNL	FLOAT - 20m - MS1 - NOLTA
20	2	59-KB080400	KOR-N-SEAL - 8in CORE - 4in thru 1.5in PIPE
21	1	59-KB1208P0	KOR-N-SEAL - 12in CORE x 8in PVC PIPE
22	1.0 ft	70-PP0600DR	PIPE - PVC SDR35 - 6in DIA

FOR DESIGN REVIEW

NOTE: ALL DIMENSIONS AND ELEVATIONS SHOWN ARE NOMINAL DIMENSIONS. IT IS THE RESPONSIBILITY OF THE ON-SITE CONTRACTOR OR ROMTEC UTILITIES CUSTOMER (NOT ROMTEC UTILITIES) TO VERIFY THE ACCURACY OF ANY CRITICAL DIMENSIONS OR ELEVATIONS PRIOR TO SETTING OR INSTALLING ANY EQUIPMENT.

REV	DATE	DESCRIPTION	BY

VERIFY SCALE
0 1"
DATE: 4-30-20

ROMTEC UTILITIES
18240 NORTH BANK ROAD
ROSEBURG, OREGON 97470
PHONE: (541) 496-9678
WWW.ROMTECUTILITIES.COM

IHS DAVIS
DAVIS, CA
WET WELL ASSEMBLY
COMPONENT DRAWING
MECHANICAL SHEET
1 OF 2