

PROJECT INFO

Job Name:	Mars Chocolate Substation
Company:	
Contact:	
Job Type:	New Station
Water Type/Source:	Stormwater
Import/Domestic:	Import Acceptable



PACKAGE/STARTUP

Offering:	Complete System
Mechanical:	All by Romtec Utilities
Pumps:	By Romtec Utilities
Control Panel:	By Romtec Utilities
Generator:	N/A
Advisor/Startup:	Mechanical & Electrical
Turnkey:	No

DESIGN CRITERIA

FLOW RATE

Peak Inflow:	22	GPM
Pumping Rate:	62	GPM (of single pump)
Static Head:	1.2	Feet
TDH:		Feet
TDH Calcs:		

ACTIVE VOLUME

Max Pump Starts:	10.00	Starts/Hr
Cycle Time:	6.00	Minutes
Active Volume:	93.00	Gallons
Active Volume:	12.43	Cu Feet
Well Shape:	Round	
Well Diameter:	4	Feet
Well Dimensions:	N/A	N/A
Cross-Section Area:	12.57	Sq Feet
Min. Depth Required:	0.99	Feet
Active Depth:	1.00	Feet

STORAGE VOLUME (if required)

Time:		Minutes
Flow Rate:		GPM
Volume:	0.00	Gallons
Volume:	0.00	Cu. Feet
Min. Depth Required:	0.00	Feet
Storage Depth:		Feet

ON-SITE POWER

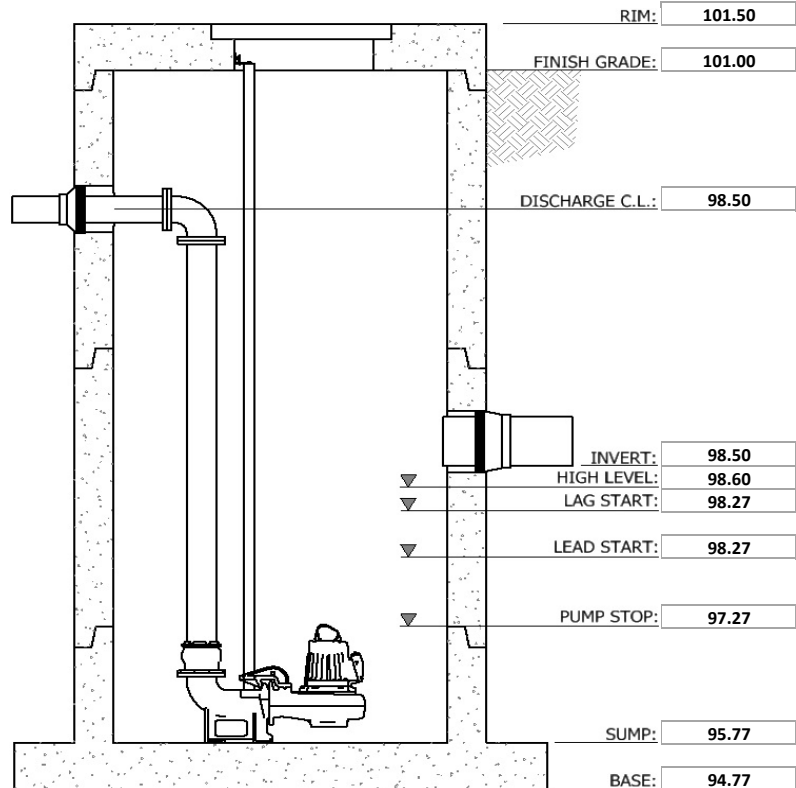
Power:	240V / 1-Phase
--------	----------------

FORCE MAIN

FM Info:	New	Single FM
Length:	67	Feet
FM Discharge:	98.50	Feet
FM High Point:	98.50	Feet
	(1)	(2) (3)
Nominal ID:	2"	
Type/Rating:	HDPE (ASSUMED IPS DR11)	

INFLUENT PIPING

Influent Invert:	98.5	(1)	(2)	(3)
Influent Size:	2"			
Type:	HDPE (IPS)			



Note: Image is a preliminary representation of the pumping system. Elevations shown are the primary factors used for sizing the wet well. Backup levels not shown. Additional (or fewer) level settings may be required.