

PARTS LIST			
ITEM	QTY	STOCK NUMBER	DESCRIPTION
1	1	10-CB000000	BASE SLAB ASSEMBLY
1.1	1	10-CB04600W	BASE - WW - 4ft DIA x 60in
1.2	1	10-GR040000	GROUT RING - 4ft DIA
1.3	1	31-EL0200CN	DISCHARGE ELBOW - 2in - CONERY
1.4	1	31-HW00AKS6	ANCHOR KIT - 316SS - DISCHARGE ELBOW
2	1	14-CT000000	TOP SLAB ASSEMBLY
2.1	1	13-HH04HD0U	HATCH - H20 OCCASIONAL - 4ft
2.2	1	13-VT0000AL	VENT - ALUMINUM - FLUSH
2.3	1	14-CT04HD0W	TOP SLAB - 4ft DIA - H20
3	1	17-AC38000B	BOLT KIT - UPPER GUIDE BAR BRACKET
4	1	17-UG01S4CN	BRACKET - 304SS - UPPER GUIDE BAR - 1in
5	2	18-AC00001B	WALL BRACKET - DISCHARGE SUPPORT
6	1	30-PU000000	PUMP SHIPPING CRATE
6.1	1	30-PU0000GL	PUMP - GOULDS - WS0312BF - 1/3HP - 20ft CABLE
6.2	1	32-AC0000FL	PUMP LIFTING SLING - 316SS - FLYGT - CHAIN ONLY
6.3	1	32-CGSS000D	CABLE SUPPORT GRIP - 304SS - 0.75in-0.99in
6.10	1	32-PLGE0000	GRIP EYE UNIT
7	8.0 ft	40-PP0100S4	PIPE - 304SS SCH40 - 1in DIA
8	3	40-TT0202S4	NIPPLE - 304SS - 2in DIA x 2in
9	1	40-TT0213S4	NIPPLE - 304SS - 2in DIA x 13in
10	1	40-TT0224S4	NIPPLE - 304SS - 2in DIA x 24in
11	1	42-SW0200SS	VALVE - SWING CHECK - 2in - SS - NPT
12	2	44-UN0204S4	UNION - 304SS SCH40 - 2in
13	1	46-EL0290S4	ELBOW - 304SS - 2in x 90deg - FNPT
14	1	50-AC000000	WELL SHIPPING CRATE
14.1	1	13-KY000000	HATCH KEY
14.2	4	18-AC00CH00	CABLE HANGER ASSEMBLY - 316SS
14.3	1	51-AC00NSTB	NEVER SIEZE - TUBE
14.4	50	51-JWCS2120	JOINT WRAP - 12in - CONSEAL CS-212
14.5	3	51-SECS1900	SEALANT - TUBE - CONSEAL CS-1900
14.6	1	51-SECS231S	SEALANT - 1in x .75in - CONSEAL CS-231
14.7	4	80-FS20MSNL	FLOAT - 20m - MS1 - NOLTA
15	2.6 ft	50-US0000S6	UNISTRUT - 316SS - SLOTTED
16	2	59-KB080400	KOR-N-SEAL - 8in CORE - 4in thru 1.5in PIPE

COLOR LEGEND

MAJOR CONCRETE COMPONENTS WITH PRE-INSTALLED COMPONENTS.

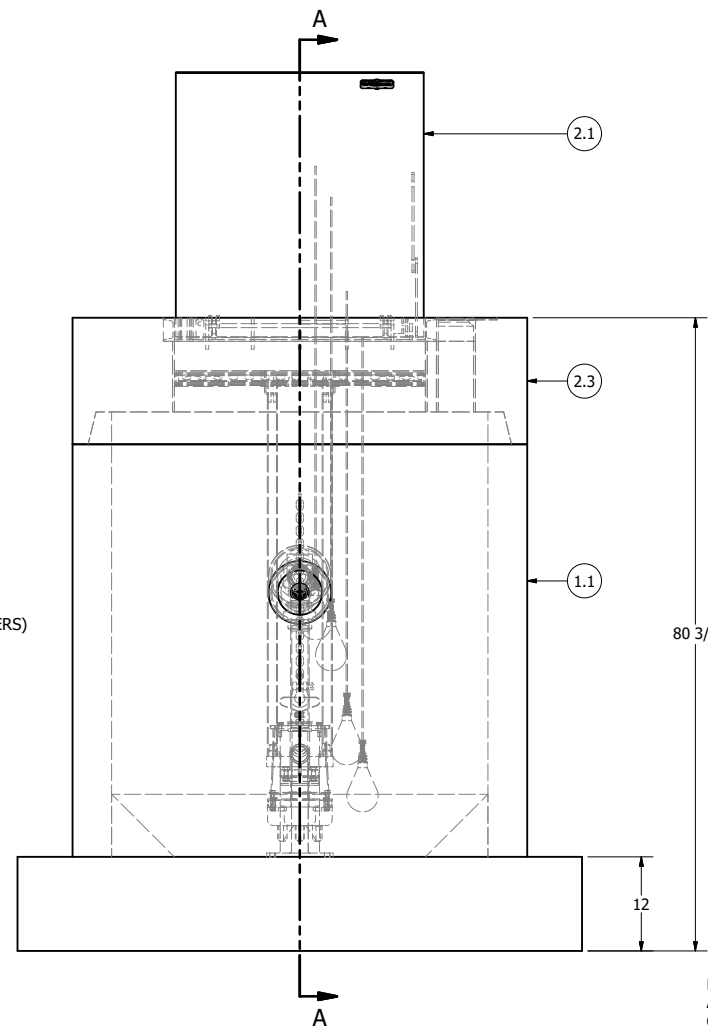
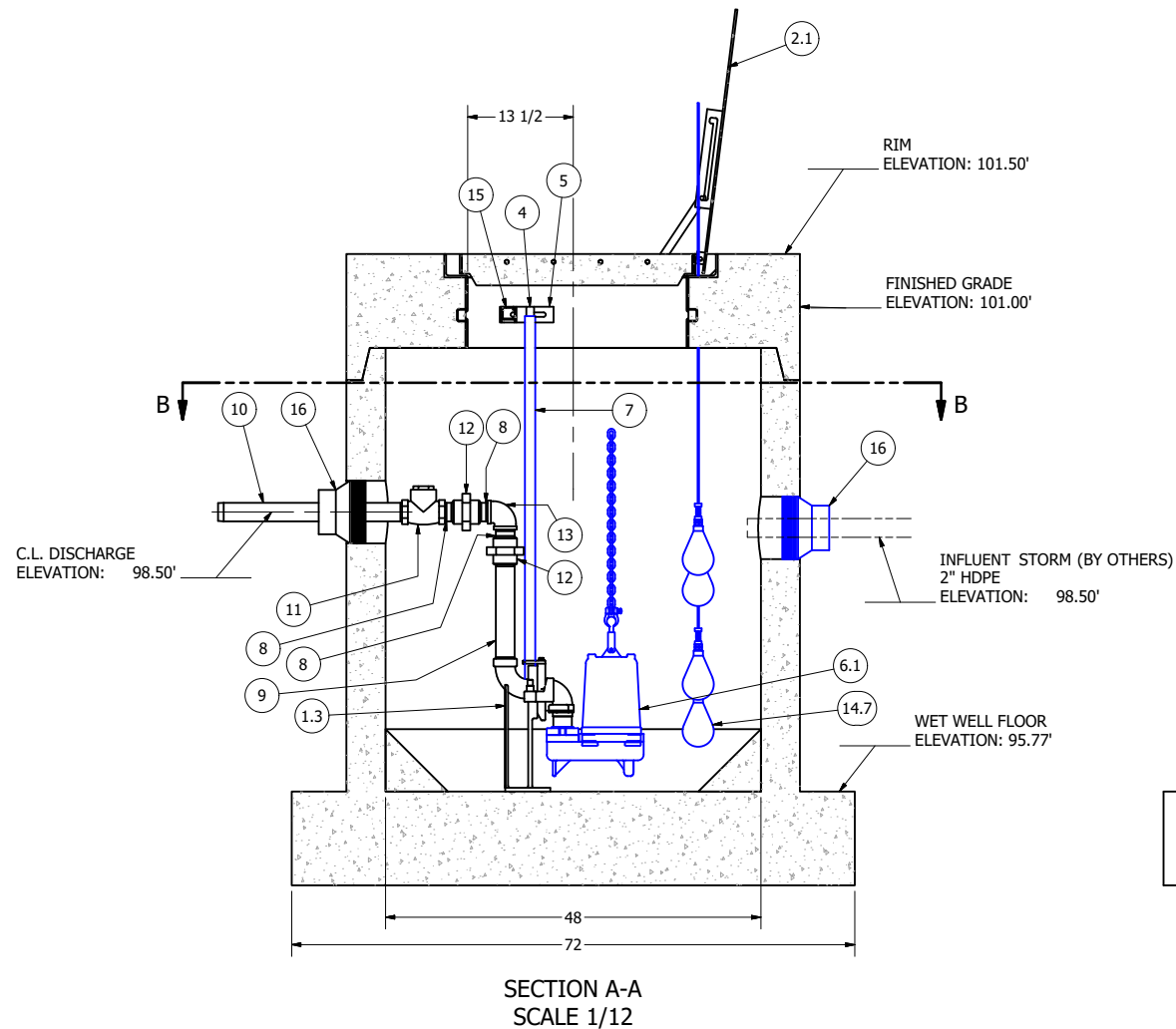
COMPONENTS PRE-ASSEMBLED TO THE EXTENT POSSIBLE AND WILL NEED TO BE FIELD INSTALLED.

NOTE: PRE-ASSEMBLY IS DONE AT ROMTEC UTILITIES' DISCRETION AND MAY CHANGE AT THE TIME OF PRODUCTION.

ALL MATERIALS SHOWN ON THIS SHEET WILL BE SUPPLIED BY ROMTEC UTILITIES AND DELIVERED TO THE SITE AFTER THE HOLE HAS BEEN EXCAVATED AND SHORED. THE CONTRACTOR SHALL SUPPLY A CRANE OF SUFFICIENT SIZE TO LOWER ALL THE CONCRETE PIECES INTO THE HOLE SAFELY. THE CONTRACTOR SHALL INSTALL THE WET WELL (AND VALVE VAULT AND METERING VAULT IF APPLICABLE). ROMTEC UTILITIES WILL PROVIDE A REPRESENTATIVE FOR TECHNICAL ASSISTANCE ON THE DAY OF INSTALLATION TO ANSWER ANY QUESTIONS THAT MAY ARISE. THE CONTRACTOR IS RESPONSIBLE FOR ALL PLUMBING AND ELECTRICAL CONNECTIONS AND INSTALLATION. ITEMS NOTED AS "BY OTHERS" WILL BE PROVIDED AND INSTALLED BY THE CONTRACTOR. ROMTEC UTILITIES WILL NOT INSTALL ANY OF THE COMPONENTS SHOWN ON THIS PAGE.



© 2020 ROMTEC INC. ALL RIGHTS RESERVED. THESE PLANS AND DRAWINGS MAY NOT BE REPRODUCED, ADAPTED, OR FURTHER DISTRIBUTED, AND NO COMPONENTS MAY BE CONSTRUCTED FROM THESE PLANS, WITHOUT WRITTEN PERMISSION OF ROMTEC, INC.



NOTE: ALL DIMENSIONS AND ELEVATIONS SHOWN ARE NOMINAL DIMENSIONS. IT IS THE RESPONSIBILITY OF THE ON-SITE CONTRACTOR OR ROMTEC UTILITIES CUSTOMER (NOT ROMTEC UTILITIES) TO VERIFY THE ACCURACY OF ANY CRITICAL DIMENSIONS OR ELEVATIONS PRIOR TO SETTING OR INSTALLING ANY EQUIPMENT.

REV	DATE	DESCRIPTION	HISTORY
0			

ROMTEC UTILITIES
 18240 NORTH BANK ROAD
 ROSEBURG, OREGON 97470
 PHONE: (541) 496-9678
 WWW.ROMTECUTILITIES.COM

MARS CHOCOLATE SUBSTATION
 HACKETTSTOWN, NJ
 WET WELL ASSEMBLY
 COMPONENT DRAWING