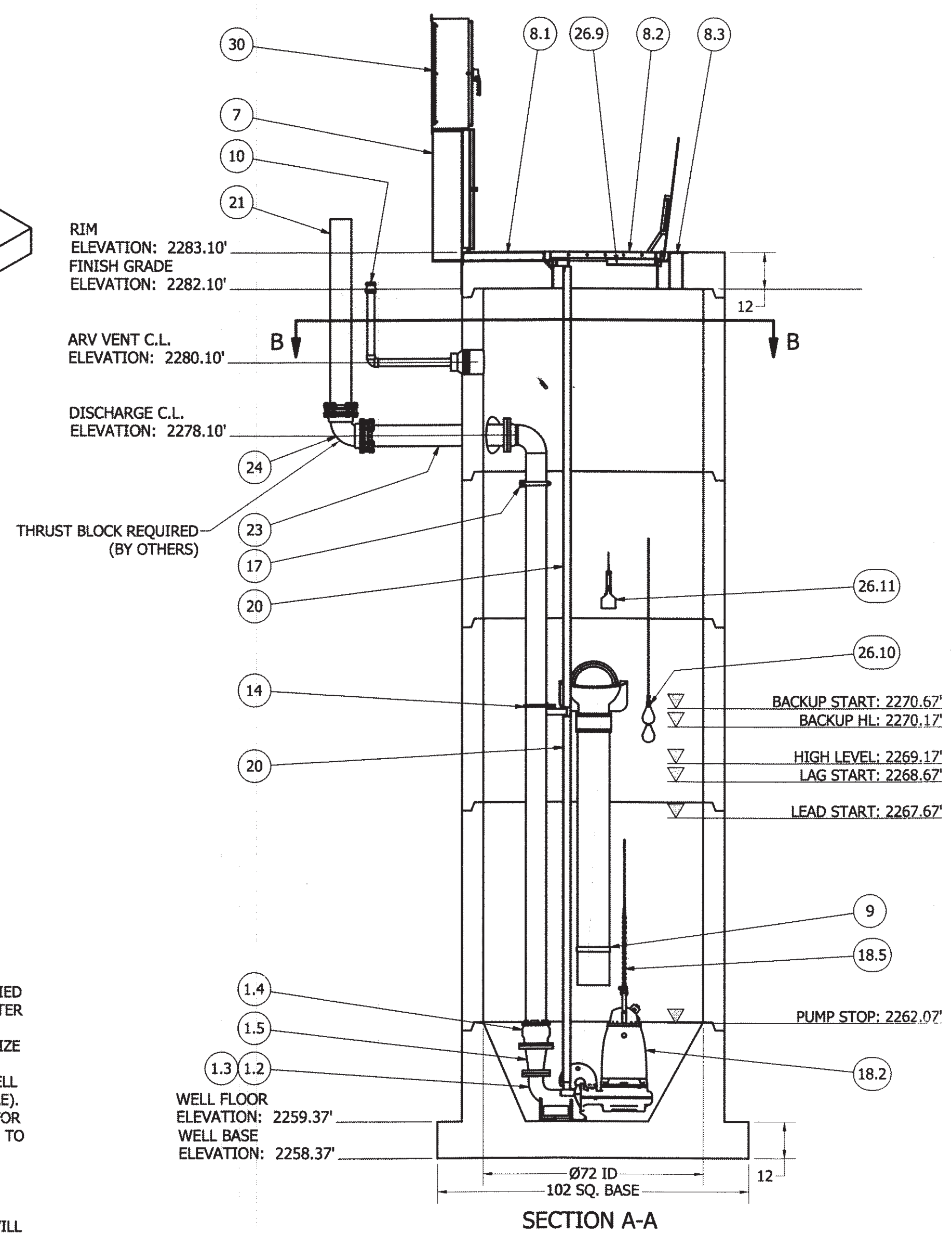
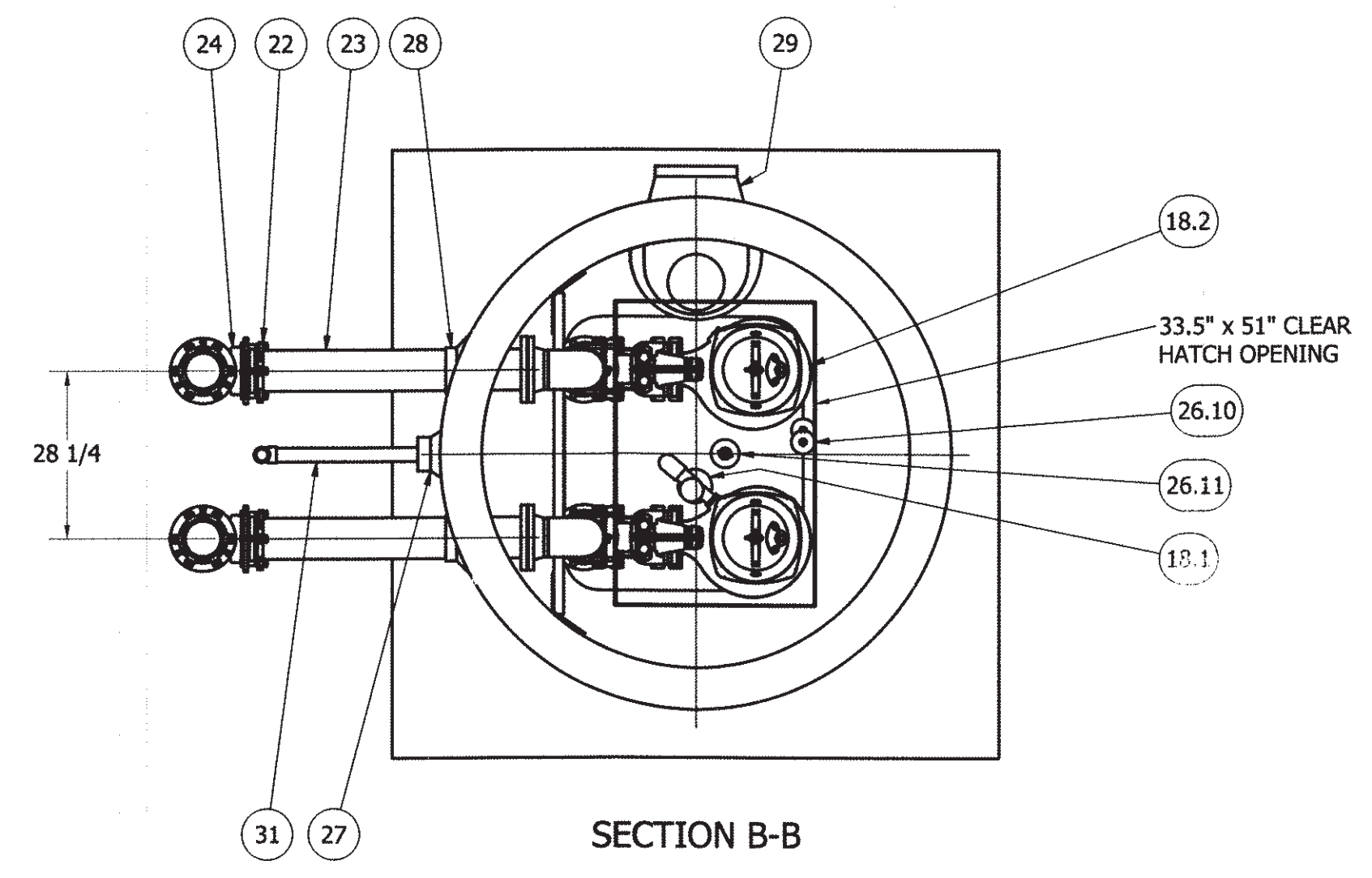


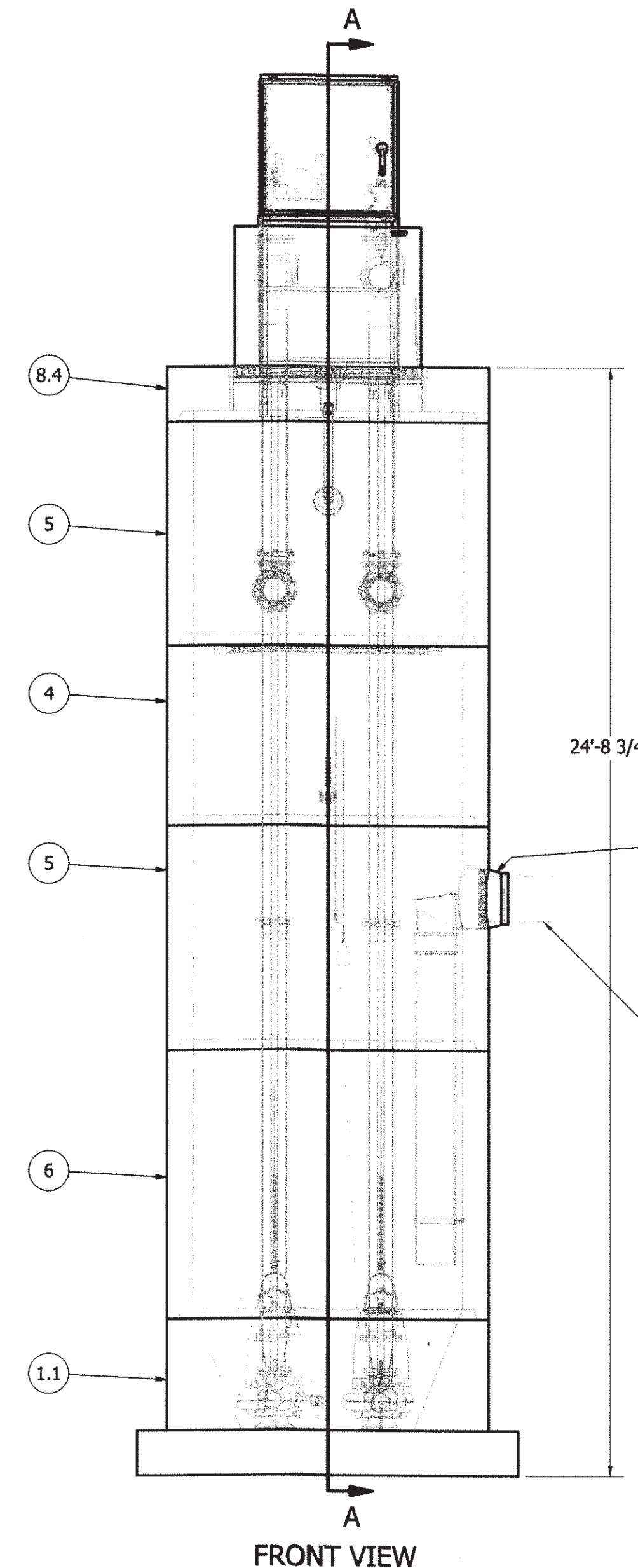
6" DIAMETER WET WELL  
6" DISCHARGE PIPING  
DUPLIX FLYGT PUMPS  
6" VALVE SKID



PRIMARY SENSOR ELEVATION TABLE		
DESCRIPTION	ELEVATION	Δ
INFLUENT INVERT	2270.77'	1.60'
HIGH LEVEL ALARM	2269.17'	0.50'
LAG PUMP START	2268.67'	1.00'
LEAD PUMP START	2267.67'	5.60'
PUMP STOP	2262.07'	2.70'
WELL FLOOR	2259.37'	

MISC. ELEVATION TABLE		
DESCRIPTION	ELEVATION	
BACKUP START (FLOAT)	2270.67'	
BACKUP HL (FLOAT)	2270.17'	

NOTE: TOP SLAB AND HATCH ARE PEDESTRIAN RATED

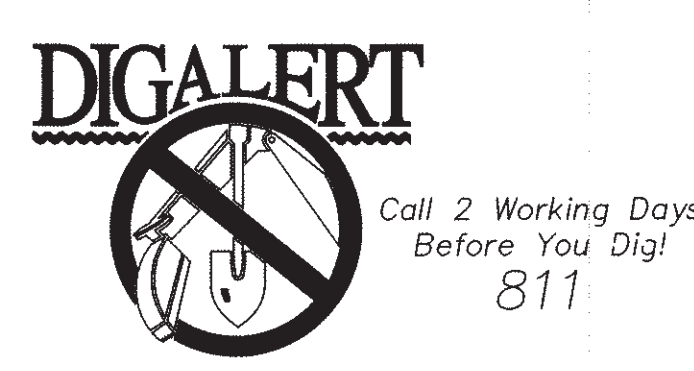


PARTS LIST			
ITEM	QTY	STOCK NUMBER	DESCRIPTION
1	1	10-CB000000	BASE SLAB ASSEMBLY
1.1	1	10-CB068H0W	BASE - WW - 6ft DIA - RU DESIGN - SQUARE
1.2	2	31-EL0400FL	DISCHARGE ELBOW - 4in - FLYGT
1.3	2	31-HW00AK56	ANCHOR KIT - 316SS - DISCHARGE ELBOW
1.4	2	44-AD06RMAL	FLANGE ADAPTER - 6in - ALPHA
1.5	2	48-RD0604DC	REDUCER - DI - 6in x 4in - CONCENTRIC
1.6	2	49-GS040000	GASKET - FLANGE - 4in
2	1	11-LC0600EX	COATING - EXTERIOR - 6ft DIA
3	1	11-LC0600IN	COATING - INTERIOR - 6ft DIA
4	1	12-CR06480W	BARREL - 6ft DIA x 4ft H
5	2	12-CR06600W	BARREL - 6ft DIA x 5ft H
6	1	12-CR06720W	BARREL - 6ft DIA x 6ft H
7	1	13-DS3636SS	DISCONNECT STAND - SS - 36in X 36in X 12in
8	1	14-CT000000	TOP SLAB ASSEMBLY
8.1	1	13-CT999999	CABLE TRAY - STAINLESS
8.2	1	13-HH999999	HATCH - 316SS - PED W/ SAFETY GRATE
8.3	1	13-VT999999	VENT - STAINLESS
8.4	1	14-CT06PD0W	TOP SLAB - 6ft DIA - PED
9	1	15-BR105535	BRACKET - PIPE - 10in - SS35 - SDR35
10	1	15-CP021H00	COUPLING - FERNCO - 2in x 1.5in
11	1	15-CP100000	COUPLING - FERNCO - 10in
12	1	15-DB101268	DROP BOWL - 12in INLET x 10in OUTLET - 6ftWET WELL
13	2	17-AC38000B	BOLT KIT - UPPER GUIDE BAR BRACKET
14	2	17-IG0254FL	BRACKET - 316SS - INTERMEDIATE GUIDE - 2in
15	2	17-SC010000	SPACER - 316SS - UPPER GUIDE BAR - 1in
16	2	17-UG0200FL	BRACKET - 316SS - UPPER GUIDE BAR - 2in
17	1	18-BR000000	BRACKET ASSEMBLY - 316SS - DISCHARGE SUPPORT
18	1	30-PU000000	PUMP SHIPPING CRATE
18.1	1	30-MFVFLYGT	MIX FLUSH VALVE - FLYGT
18.2	3	30-PU0000FL	PUMP - FLYGT NP3171HT 30HP
18.3	1	32-99999999	PUMP SPARE PARTS KIT
18.4	3	32-99999999	FACTORY PERFORMANCE TESTING
18.5	2	32-AC0000FL	LIFTING SLING ASSEMBLY - 316SS & ROPE
18.6	2	32-CG55000E	CABLE SUPPORT GRIP - 304SS - 1in-1.24in
18.7	1	32-PLGE0000	GRIP EYE UNIT
19	2	40-FP999999	DISCHARGE PIPE - 316L SCH40 - 6in
20	88.0 ft	40-PP020056	PIPE - 316SS SCH40 - 2in DIA
21	11.0 ft	40-PP0600D0	PIPE - DI - 6in DIA
22	4	44-AC065T00	ACCESSORY PACK - 6in - MJ - STARGRIP
23	2	45-FP060480	SPOOL - DI - 6in DIA x 48in - FLGXPE
24	2	46-EL0690MJ	ELBOW - DI - 6in x 90deg - MJxMJ
25	2	49-GS060000	GASKET - FLANGE - 6in
26	1	50-AC000000	WELL SHIPPING CRATE
26.1	1	13-KY000000	HATCH KEY
26.2	4	18-AC00CH00	CABLE HANGER ASSEMBLY - 316SS
26.3	4	18-HD040000	LIFTING CLUTCH - 4 TON
26.4	1	51-AC00NSTB	NEVER SIEZE - TUBE
26.5	113 ft	51-JWCS2120	JOINT WRAP - 12in - CONSEAL CS-212
26.6	1	51-SECS1900	SEALANT - TUBE - CONSEAL CS-1900
26.7	116 ft	51-SECS2315	SEALANT - 1in x .75in - CONSEAL CS-231
26.8	1	80-BR00UT00	BRACKET - ULTRASONIC TRANSDUCER
26.9	1	80-BR00UTHB	BRACKET - HANGING BRACKET - 16in - SS
26.10	2	80-FS20MSNL	FLOAT - 20m - MS1 - NOLTA
26.11	1	80-UT0015XP	ULTRASONIC TRANSDUCER - XPS-15
27	1	59-KB080400	KOR-N-SEAL - 8in CORE - 4in thru 1.5in PIPE
28	2	59-KB1206DI	KOR-N-SEAL - 12in CORE x 6in DIPS PIPE
29	1	59-KB1612P0	KOR-N-SEAL - 16in CORE x 12in PVC PIPE
30	1	61-EP5036DC	PNL DISCONNECT 31-50FLA (36x36)
31	4.5 ft	70-PP0200P4	PIPE - PVC SCH40 - 2in DIA
32	7.0 ft	70-PP1000DR	PIPE - PVC SDR35 - 10in DIA
33	1	76-EL029040	ELBOW - PVC SCH40 - 2in x 90deg - SLIP

INFLUENT SEWER (BY OTHERS)  
12" PVC C900  
ELEVATION: 2270.77'

NOTE: ALL DIMENSIONS AND ELEVATIONS SHOWN ARE NOMINAL DIMENSIONS. IT IS THE RESPONSIBILITY OF THE ON-SITE CONTRACTOR OR ROMTEC UTILITIES CUSTOMER (NOT ROMTEC UTILITIES) TO VERIFY THE ACCURACY OF ANY CRITICAL DIMENSIONS OR ELEVATIONS PRIOR TO SETTING OR INSTALLING ANY EQUIPMENT.

ALL MATERIALS SHOWN ON THIS SHEET WILL BE SUPPLIED BY ROMTEC UTILITIES AND DELIVERED TO THE SITE AFTER THE HOLE HAS BEEN EXCAVATED AND SHORED. THE CONTRACTOR SHALL SUPPLY A CRANE OF SUFFICIENT SIZE TO LOWER ALL THE CONCRETE PIECES INTO THE HOLE SAFELY. THE CONTRACTOR SHALL INSTALL THE WET WELL (AND VALVE VAULT AND METERING VAULT IF APPLICABLE). ROMTEC UTILITIES WILL PROVIDE A REPRESENTATIVE FOR TECHNICAL ASSISTANCE ON THE DAY OF INSTALLATION TO ANSWER ANY QUESTIONS THAT MAY ARISE. THE CONTRACTOR IS RESPONSIBLE FOR ALL PLUMBING AND ELECTRICAL CONNECTIONS AND INSTALLATION. ITEMS NOTED AS "BY OTHERS" WILL BE PROVIDED AND INSTALLED BY THE CONTRACTOR. ROMTEC UTILITIES WILL NOT INSTALL ANY OF THE COMPONENTS SHOWN ON THIS PAGE.



BENCHMARK:  
DESCRIPTION: USGS MONUMENT "REST" BENCHMARK DISK SET IN TOP OF CONCRETE MONUMENT STAMPED "REST 1972" ON DESERT LAWN DRIVE ACROSS THE DRIVE FROM DESERT LAWN CEMETERY 25.3 FT. N.E. OF THE DRIVE CENTERLINE 24.9 FT. S.W. OF THE S.W. EDGE OF THE SOUTH EASTBOUND LANES OF INTERSTATE HIGHWAY 10  
ELEV.2491.44, NGVD 29

BY	MARK	DESCRIPTION	APPR.	DATE
ENGINEER		REVISIONS		CITY

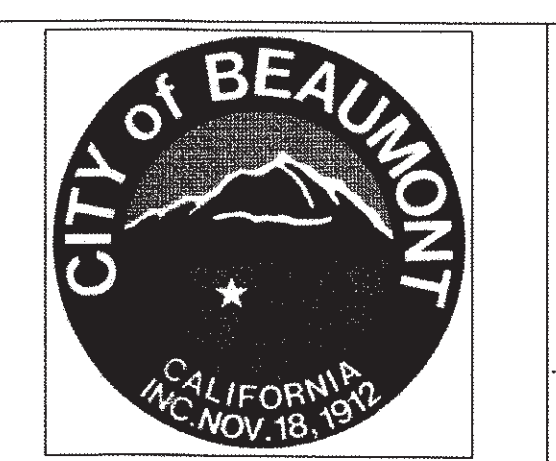
**ROMTEC UTILITIES**  
18240 N. BANK ROAD  
ROSEBURG, OR 97470  
503-650-9478

THOMAS J. ROGERS  
No. C46152 EXP. 12-31-2020

03/20/20 DATE

DESIGN BY: PEC  
DRAWN BY: PEC  
CHECKED BY: PEC  
SCALE: AS NOTED  
DATE: 03/20/20  
JOB NUMBER: 06.002.000

REGISTERED PROFESSIONAL ENGINEER  
THOMAS J. ROGERS  
No. 1846152  
EXP. 12/31/20  
3/8/20 CIVIL  
STATE OF CALIFORNIA



Reviewed By: \_\_\_\_\_ Date: \_\_\_\_\_  
Staff Engineer

Recommended for Approval By: \_\_\_\_\_ Date: \_\_\_\_\_  
Administrative Engineer

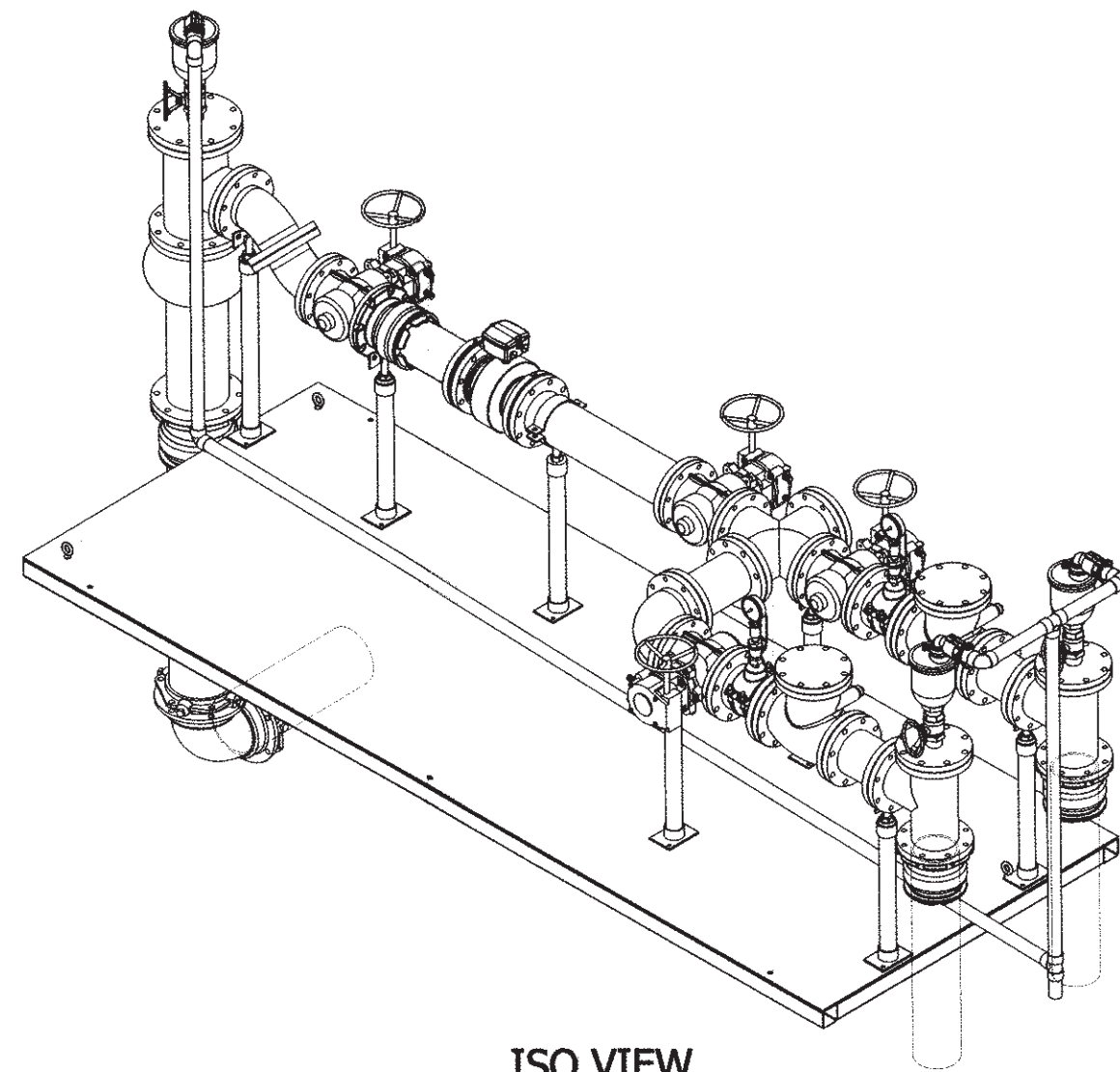
Approved By: \_\_\_\_\_ Date: \_\_\_\_\_  
City Engineer/Director of Public Works

CITY OF BEAUMONT, PUBLIC WORKS DEPARTMENT  
ENGINEERING DIVISION

5506, 6th St  
Beaumont, CA 92523  
TEL: (951) 788-8520 FAX: (951) 789-8526

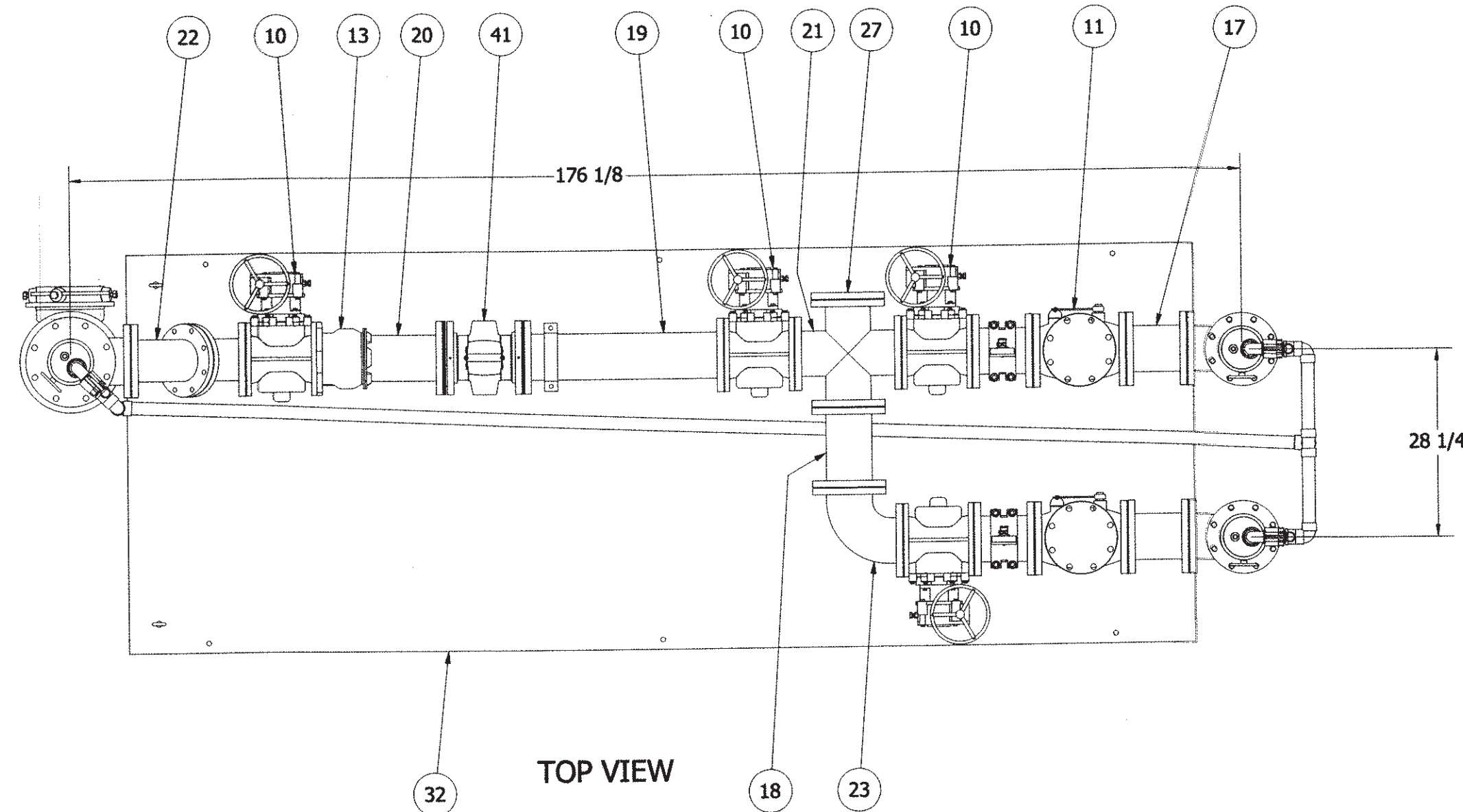
CITY OF BEAUMONT, CALIFORNIA  
SEWER LIFT STATION  
TRACT NO. 31462 - PHASE 4  
TUKWET CANYON PKWY. & SORENSTAM DR.  
WET WELL ASSEMBLY

SHEET  
4  
OF 18 SHEETS  
FILE NO:



ISO VIEW

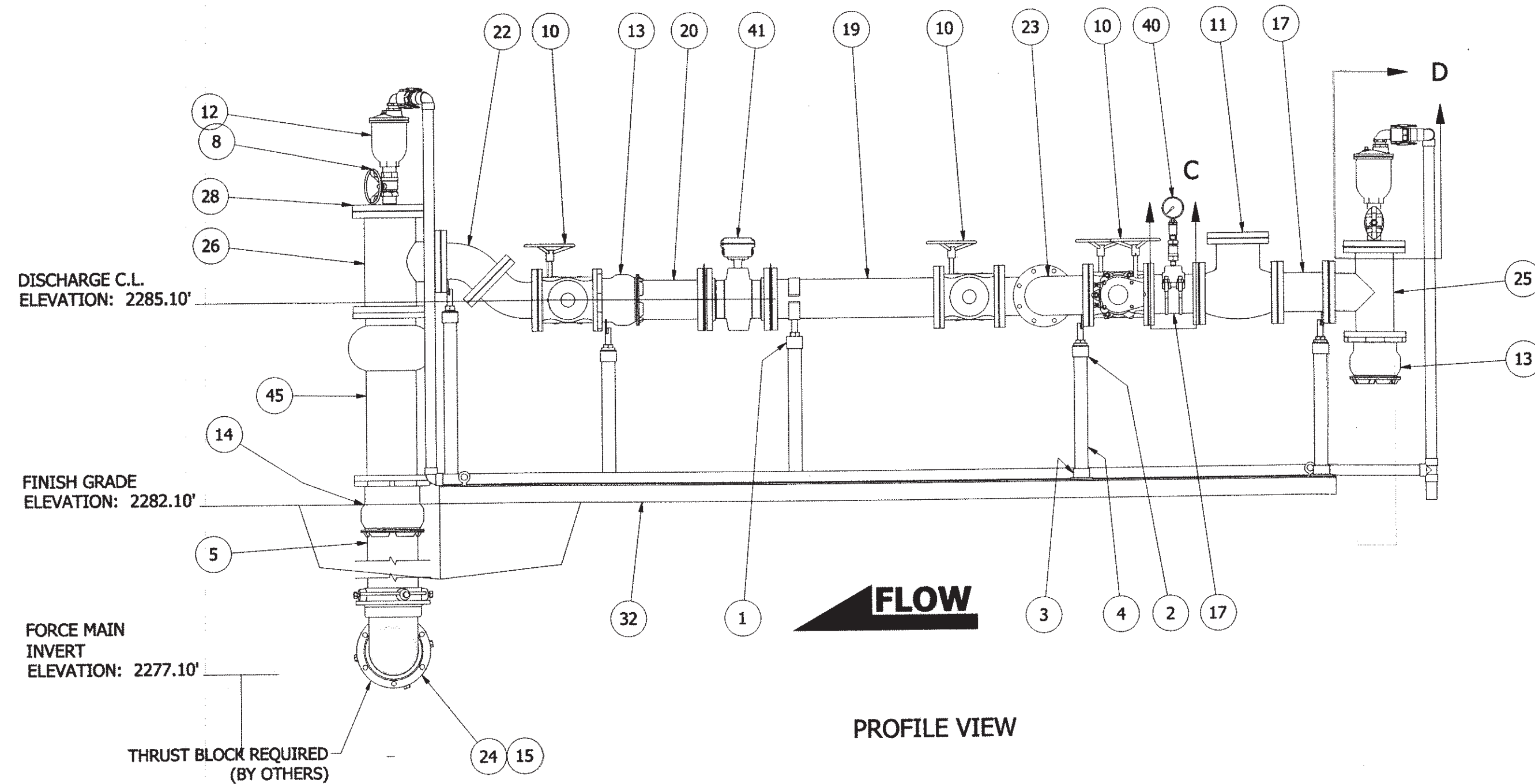
**ABOVE GRADE SKID ASSEMBLY  
6" PIPING AND VALVES  
W/ PUMPING PORT & ARVs**



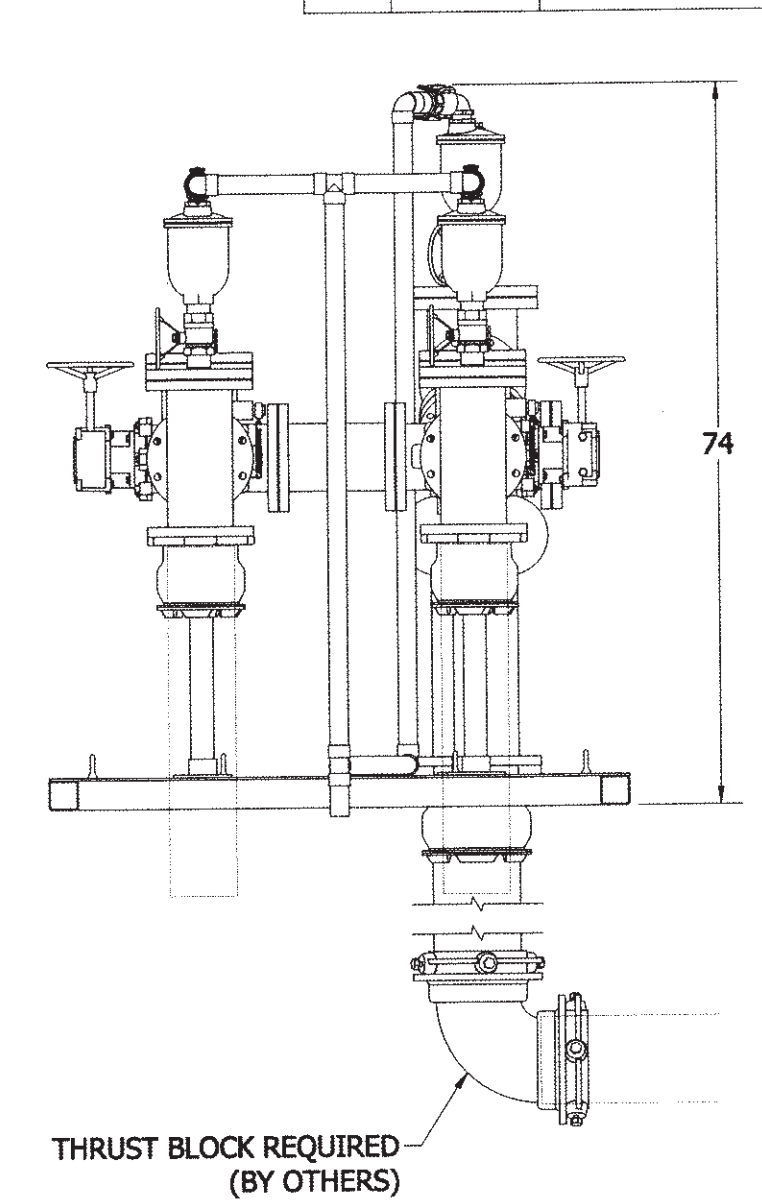
TOP VIEW

PARTS LIST				
ITEM	QTY	STOCK NUMBER	DESCRIPTION	
1	1	25-PS06C92S	PIPE STAND - 304SS - 6in CLAMP	
2	6	25-PS06RUF	PIPE STAND - 304SS - 6in FLANGE	
3	7	25-PS06BASE	PIPE STAND BASE - 304SS - 2in - 2 BOLT	
4	14.5 ft	40-PP0200S4	PIPE - 304SS SCH40 - 2in DIA	
5	4.5 ft	40-PP0800D0	PIPE - DI - 8in DIA	
6	6	40-TT0203S4	NIPPLE - 304SS - 2in DIA x 3in	
7	4	40-TT0802S4	NIPPLE - 304SS - 0.5in DIA x 2in	
8	3	41-BV020V56	BALL VALVE - 316SS - 2in - OVAL HANDLE	
9	2	41-BV0800S6	BALL VALVE - 316SS - 0.5in	
10	4	41-PV060HD0	PLUG VALVE - 6in - GEARED HANDWHEEL	
11	2	42-LS0600D0	CHECK VALVE - LEVER & SPRING - 6in	
12	3	43-AV0200AR	AIR RELEASE VALVE - 2in NPT - VALMATIC 38	
13	3	44-AD06RMAL	FLANGE ADAPTER - 6in - ALPHA	
14	1	44-AD08RMAL	FLANGE ADAPTER - 8in - ALPHA	
15	2	44-RJ0800S0	JOINT RESTRAINT - 8in	
16	2	44-TS060H00	TAPPING SADDLE - 6in x .5in	
17	4	45-FF060090	SPOOL - DI - 6in DIA x 9in - FLGxFLG	
18	1	45-FF060120	SPOOL - DI - 6in DIA x 12in - FLGxFLG	
19	1	45-FF060300	SPOOL - DI - 6in DIA x 30in - FLGxFLG	
20	1	45-FF060180	SPOOL - DI - 6in DIA x 18in - FLGxPE	
21	1	46-CX0606DI	CROSS - DI - 6in - FLGxFLG	
22	2	46-EL0645DI	ELBOW - DI - 6in x 45deg - FLGxFLG	
23	1	46-EL0690DI	ELBOW - DI - 6in x 90deg - FLGxFLG	
24	1	46-EL0890MJ	ELBOW - DI - 8in x 90deg - MJxMJ	
25	2	46-TE0606DI	TEE - DI - 6in - FLGxFLG	
26	1	46-TE0806DI	TEE - DI - 8in x 6in - FLGxFLG	
27	3	48-FL060BD0	FLANGE - DI - 6in - BLIND	
28	1	48-FL080BD0	FLANGE - DI - 8in - BLIND	
29	2	48-PL000HX	PLUG - 304SS - .25in NPT - HEX SOCKET	
30	24	49-GS060000	GASKET - FLANGE - 6in	
31	1	49-GS080000	GASKET - FLANGE - 8in	
32	1	50-SK000000	SKID ASSEMBLY - STEEL - POWDER COATED	
33	27.9 ft	70-PP1H00P4	PIPE - PVC SCH40 - 1.5in DIA	
34	3	74-AD1H004M	ADAPTER - PVC SCH40 - 1.5in - SLIP x MNPT	
35	3	74-CL1H1HSF	CAM LOCK - 1.5in SOCKET x 1.5in FNPT	
36	3	74-CL1HELPM	CAM LOCK - 1.5in ELBOW - PLUGxMNPT	
37	4	76-EL1H9040	ELBOW - PVC SCH40 - 1.5in x 90deg - SLIP	
38	2	76-TE1H1H40	TEE - PVC SCH40 - 1.5in x 1.5in - SLIP	
39	3	78-BH021H8M	BUSHING - PVC SCH80 - 2in x 1.5in - MNPT x FNPT	
40	2	81-PG3H00QL	PRESSURE GAUGE - 3.5in DIA - 100#	
41	1	82-FM0651S1	FLOWMETER - 6in - SIEMENS - 5100W	
42	2	82-GR060000	GROUNDING RING - 6in	
43	2	83-GI0HF00F	DIAPHRAGM SEAL - 0.5in FNPT x 0.25in FNPT	
45	1	44-CP08FLSB	FLEXI JOINT - SINGLE BALL - 8in x 4in EXPAN - FLG x FLG	

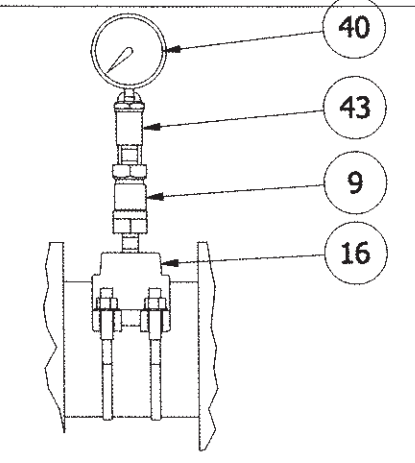
ALL MATERIALS SHOWN ON THIS SHEET WILL BE SUPPLIED BY ROMTEC UTILITIES AND DELIVERED TO THE SITE AFTER THE HOLE HAS BEEN EXCAVATED AND SHORED. THE CONTRACTOR SHALL SUPPLY A CRANE OF SUFFICIENT SIZE TO LOWER ALL THE CONCRETE PIECES INTO THE HOLE SAFELY. THE CONTRACTOR SHALL INSTALL THE WET WELL (AND VALVE VAULT AND METERING VAULT IF APPLICABLE). ROMTEC UTILITIES WILL PROVIDE A REPRESENTATIVE FOR TECHNICAL ASSISTANCE ON THE DAY OF INSTALLATION TO ANSWER ANY QUESTIONS THAT MAY ARISE. THE CONTRACTOR IS RESPONSIBLE FOR ALL PLUMBING AND ELECTRICAL CONNECTIONS AND INSTALLATION. ITEMS NOTED AS "BY OTHERS" WILL BE PROVIDED AND INSTALLED BY THE CONTRACTOR. ROMTEC UTILITIES WILL NOT INSTALL ANY OF THE COMPONENTS SHOWN ON THIS PAGE.



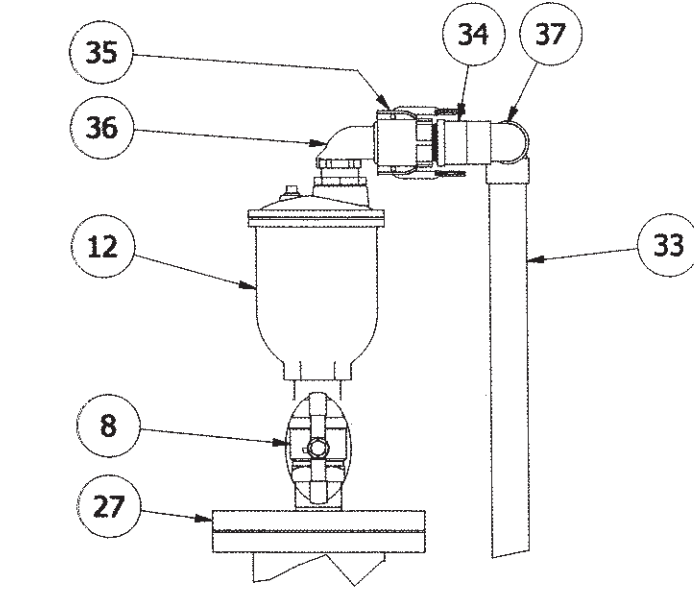
PROFILE VIEW



FRONT VIEW

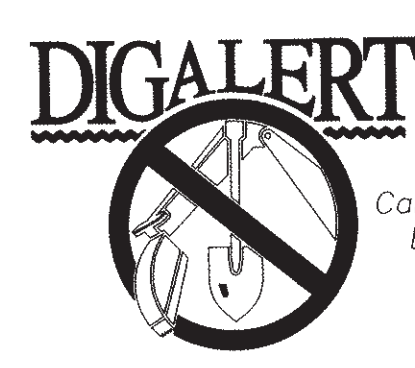


DETAIL C



DETAIL D

NOTE: ALL DIMENSIONS AND ELEVATIONS SHOWN ARE NOMINAL DIMENSIONS. IT IS THE RESPONSIBILITY OF THE ON-SITE CONTRACTOR OR ROMTEC UTILITIES CUSTOMER (NOT ROMTEC UTILITIES) TO VERIFY THE ACCURACY OF ANY CRITICAL DIMENSIONS OR ELEVATIONS PRIOR TO SETTING OR INSTALLING ANY EQUIPMENT.



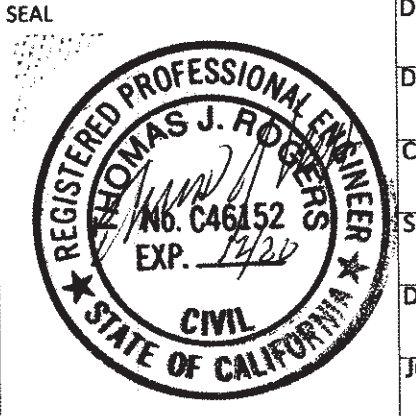
Call 2 Working Days Before You Dig! 811

**BENCHMARK:**  
DESCRIPTION: USGS MONUMENT "REST" BENCHMARK DISK SET IN TOP OF CONCRETE MONUMENT STAMPED "REST 1972" ON DESERT LAWN DRIVE ACROSS THE DRIVE FROM DESERT LAWN CEMETERY 25.3 FT. N.E. OF THE DRIVE CENTERLINE 24.9 FT. S.W. OF THE S.W. EDGE OF THE SOUTH EASTBOUND LANES OF INTERSTATE HIGHWAY 10  
ELEV. 2491.44, NGVD 29

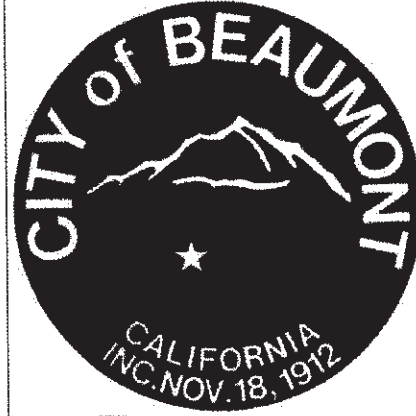
BY	MARK	DESCRIPTION	APPR.	DATE
ENGINEER		REVISIONS	CITY	



THOMAS J. ROGERS  
No. C46152 EXP. 12-31-2020



DESIGN BY: PEC  
DRAWN BY: PEC  
CHECKED BY: PEC  
SCALE: AS NOTED  
DATE: 05/06/20  
JOB NUMBER: 06.002.000

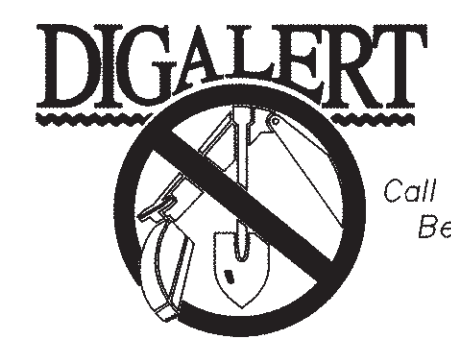
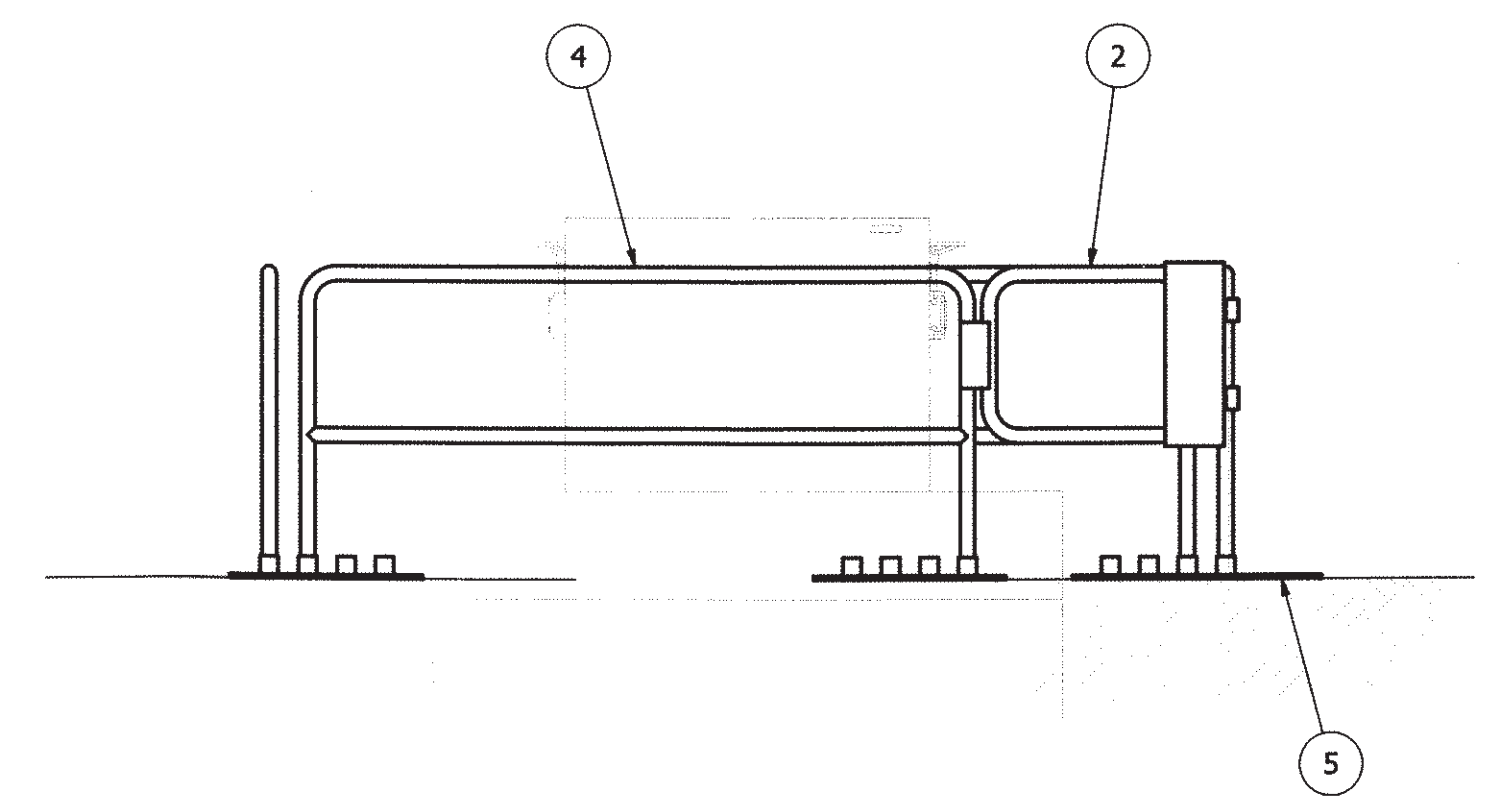
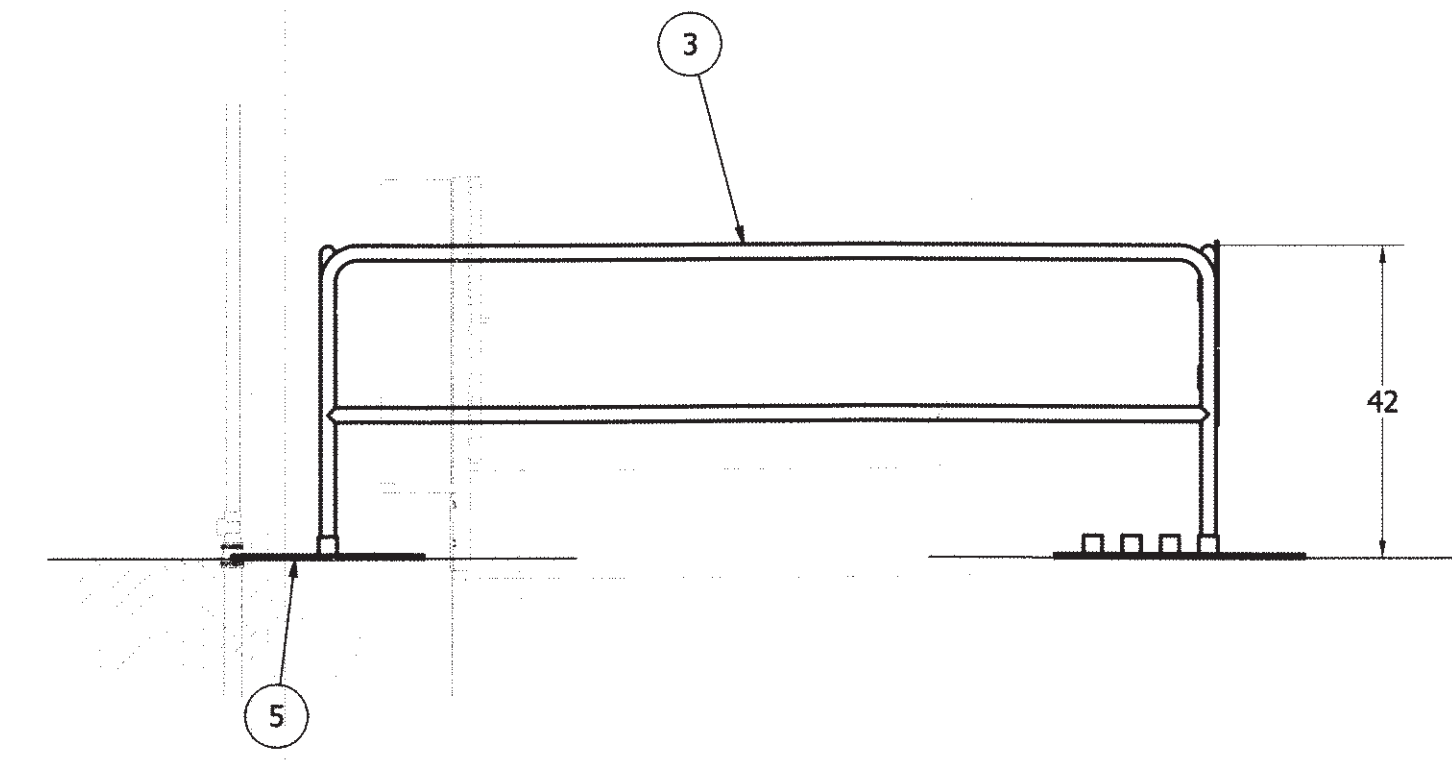
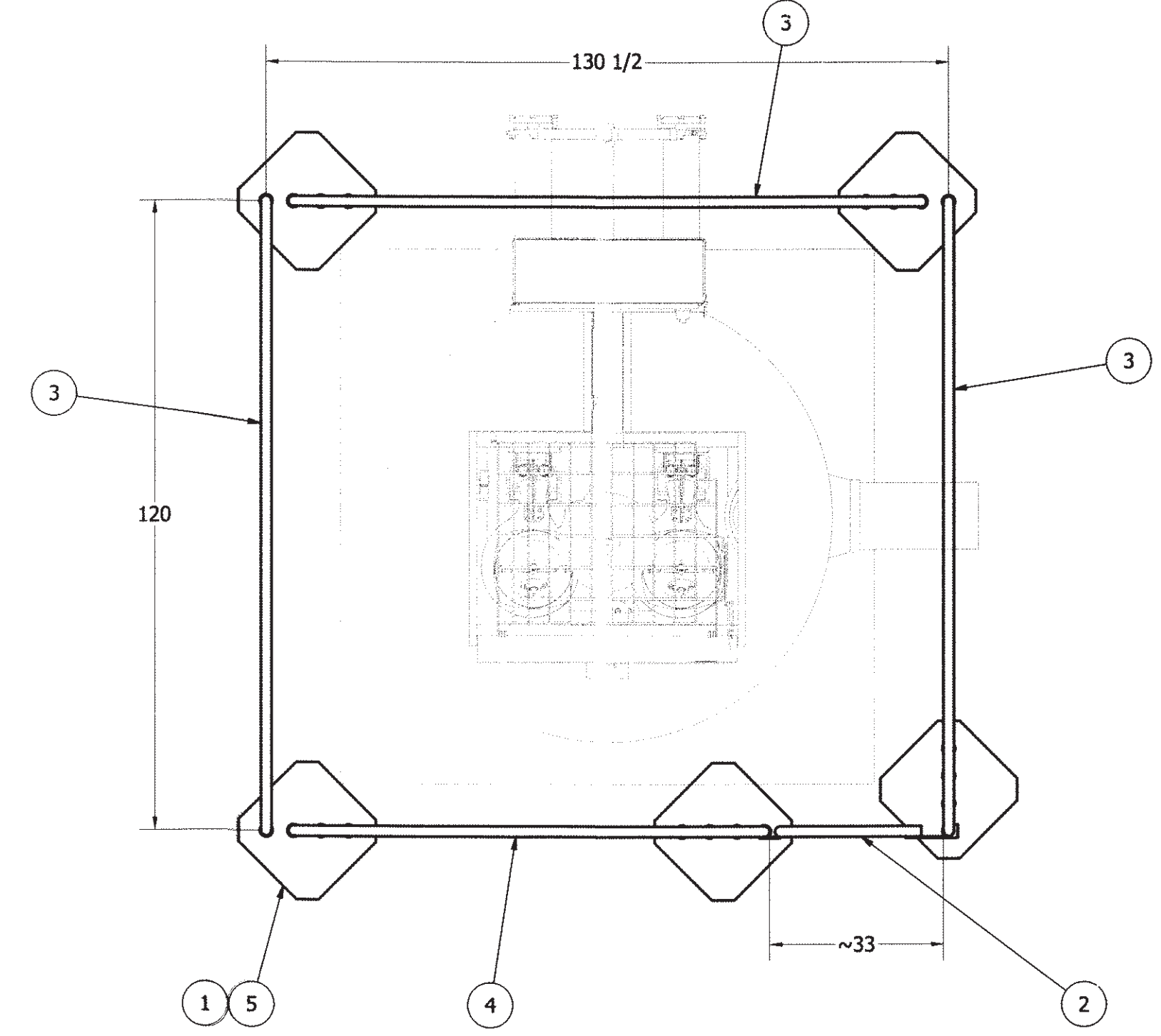
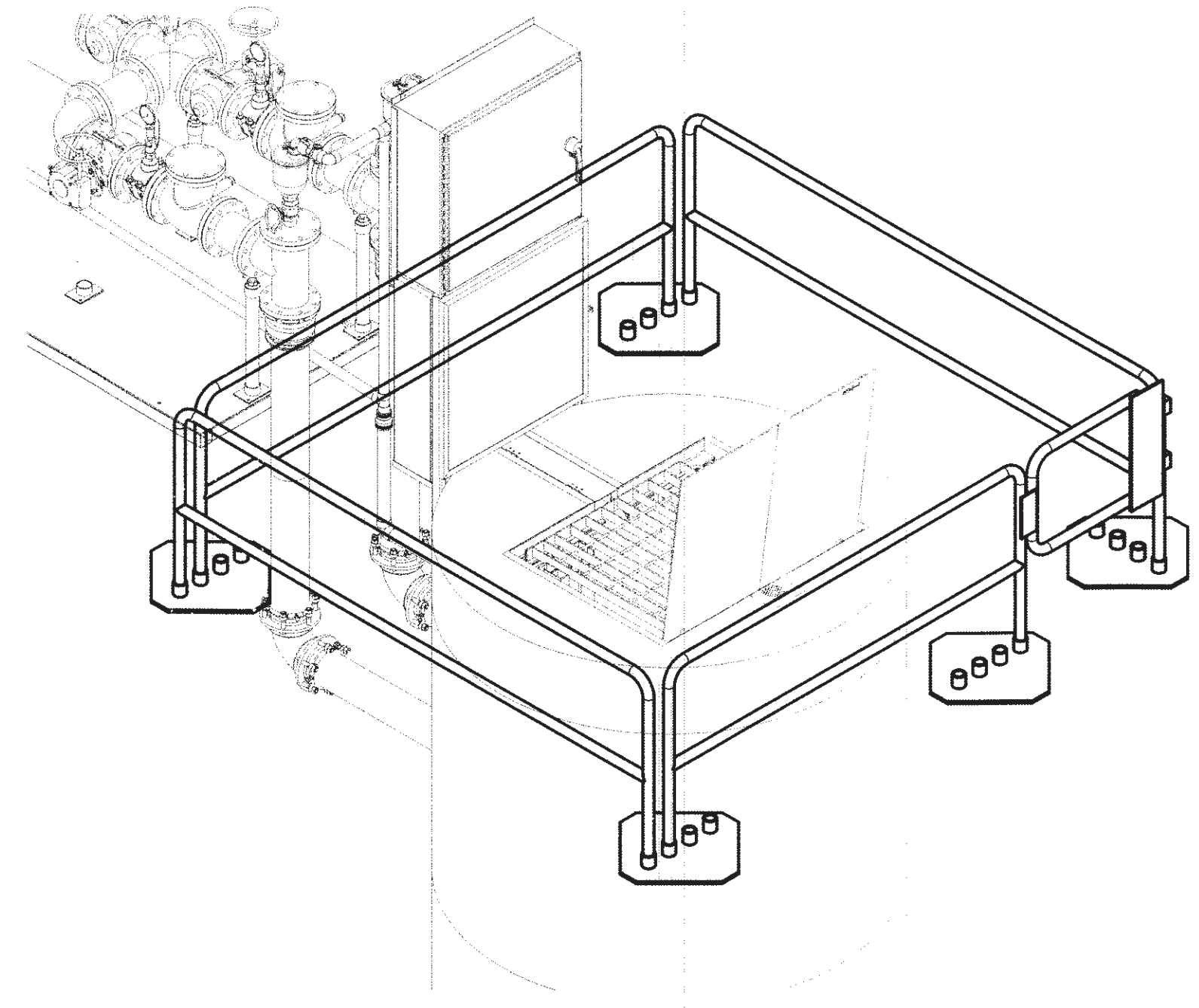


Reviewed By: \_\_\_\_\_ Date: \_\_\_\_\_  
Staff Engineer  
Recommended for Approval By: \_\_\_\_\_ Date: \_\_\_\_\_  
Administrative Engineer  
Approved By: \_\_\_\_\_ Date: \_\_\_\_\_  
City Engineer/Director of Public Works  
CITY OF BEAUMONT, PUBLIC WORKS DEPARTMENT  
ENGINEERING DIVISION  
550E 6th St, Beaumont, CA 92223  
TEL: (951) 769-8520 FAX: (951) 769-8526

CITY OF BEAUMONT, CALIFORNIA  
SEWER LIFT STATION  
TRACT NO. 31462 - PHASE 4  
TUKWET CANYON PKWY. & SORENSTAM DR.  
VALVE ASSEMBLY

SHEET  
5  
OF 18 SHEETS  
FILE NO:

PARTS LIST				
ITEM	QTY	STOCK NUMBER	DESCRIPTION	
1	8	14-GG999999	CONNECTING PIN	
2	1	14-GG999999	GATE - 30in	
3	3	14-GG999999	GUARD RAIL - 10ft LENGTH	
4	1	14-GG999999	GUARD RAIL - 7.5ft LENGTH	
5	5	14-GG999999	GUARD RAIL BASE	



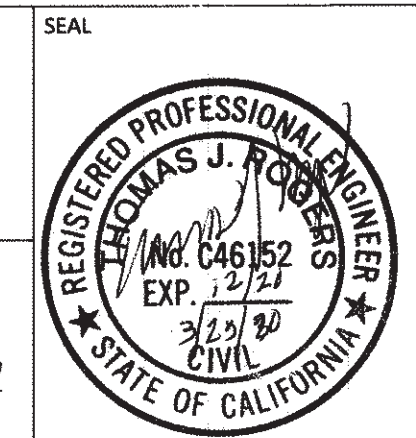
Call 2 Working Days  
Before You Dig!  
811

**BENCHMARK:**  
DESCRIPTION: USGS MONUMENT "REST"  
BENCHMARK DISK SET IN TOP OF  
CONCRETE MONUMENT STAMPED "REST  
1972" ON DESERT LAWN DRIVE ACROSS  
THE DRIVE FROM DESERT LAWN  
CEMETERY 25.3 FT. N.E. OF THE DRIVE  
CENTERLINE 24.9 FT. S.W. OF THE S.W.  
EDGE OF THE SOUTH EASTBOUND LANES  
OF INTERSTATE HIGHWAY 10  
ELEV.2491.44, NGVD 29

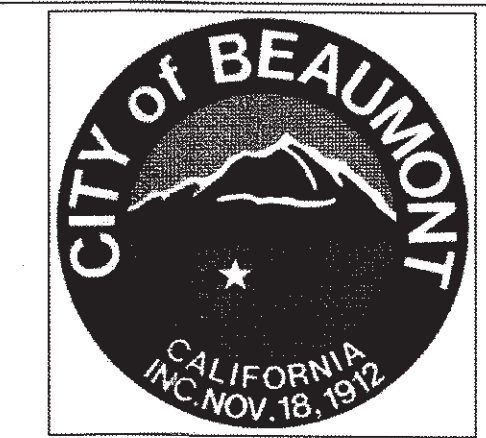
BY	MARK	DESCRIPTION	APPR.	DATE
ENGINEER		REVISIONS	CITY	

**ROMTEC UTILITIES**  
18240 N. BANK ROAD  
ROSEBURG, OR 97470  
503-650-9678

THOMAS J. ROGERS  
No. C46152 EXP. 12-31-2020



DESIGN BY: PEC  
DRAWN BY: PEC  
CHECKED BY: PEC  
SCALE: AS NOTED  
DATE: 03/20/20  
JOB NUMBER: 06.002.000



Reviewed By: \_\_\_\_\_ Date: \_\_\_\_\_  
Staff Engineer

Recommended for Approval By: \_\_\_\_\_ Date: \_\_\_\_\_  
Administrative Engineer

Approved By: \_\_\_\_\_ Date: \_\_\_\_\_  
City Engineer/Director of Public Works

CITY OF BEAUMONT, PUBLIC WORKS DEPARTMENT  
ENGINEERING DIVISION

550E, 6th St  
Beaumont, CA 92223  
TEL: (951) 769-8520 FAX: (951) 799-8526

CITY OF BEAUMONT, CALIFORNIA  
SEWER LIFT STATION  
**TRACT NO. 31462 - PHASE 4**  
TUKWET CANYON PKWY. & SORENSTAM DR.  
GUARD RAIL ASSEMBLY

SHEET  
6  
OF 18 SHEETS  
FILE NO: