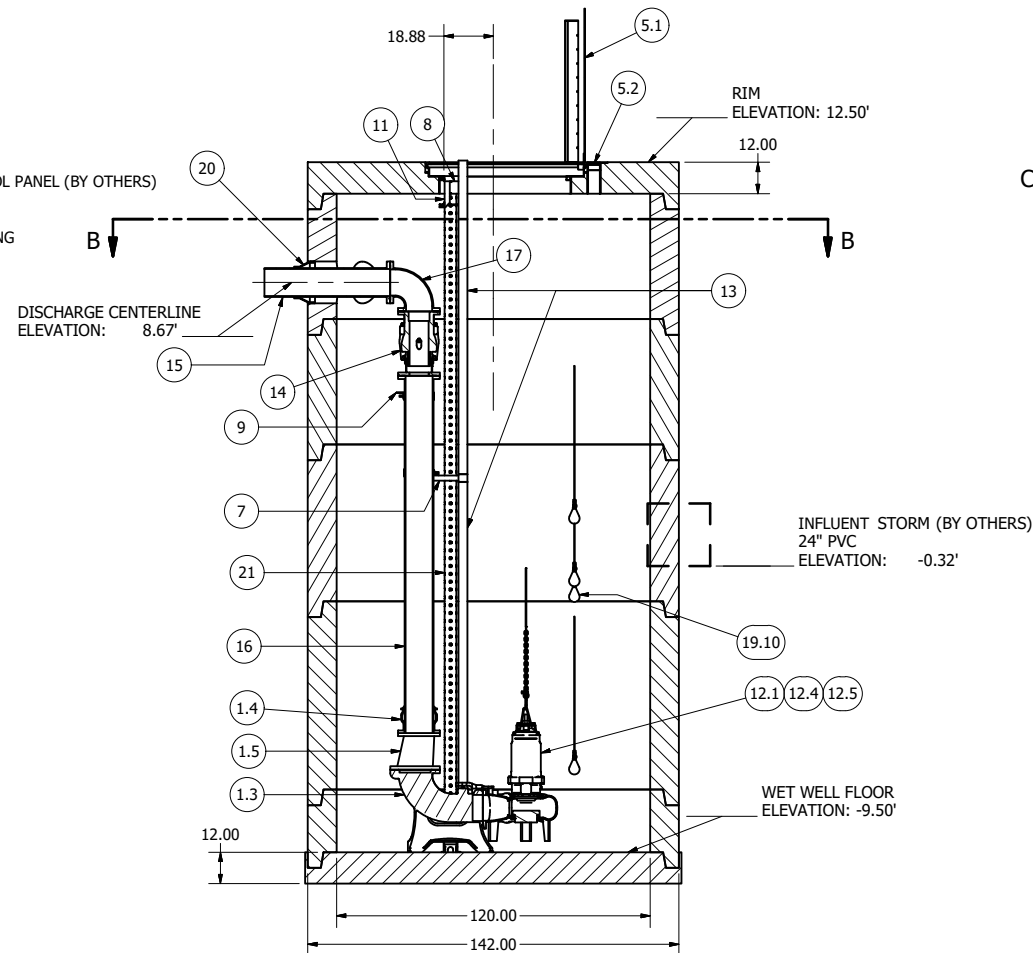
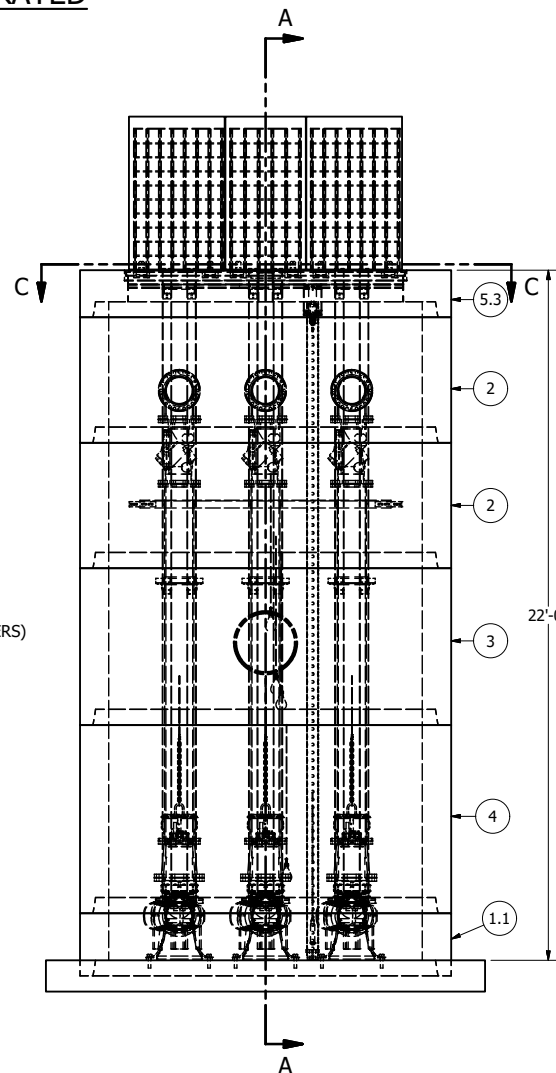


NOTE: TOP SLAB AND HATCH ARE H-20 OCCASIONAL TRAFFIC RATED

NOTE: CONDUIT TO CONTROL PANEL (BY OTHERS)
MINIMUM:
(3) FOR POWER
(1) FOR LEVEL SENSING



SECTION A-A
SCALE 1/36



PARTS LIST				
ITEM	QTY	STOCK NUMBER	DESCRIPTION	
1	1	10-CB000000	BASE SLAB ASSEMBLY	
1.1	1	10-CB102400	BASE - WW - 10ft DIA x 24in	
1.2	3	31-HW00AKS6	ANCHOR KIT - 316SS - DISCHARGE ELBOW	
1.3	3	31-QD12LLEB	QDC - 12in - LL300U - EBARA	
1.4	3	44-AD10RMAL	FLANGE ADAPTER - 10in - ALPHA	
1.5	3	48-RD1210DE	REDUCER - DI - 12in x 10in - ECCENTRIC	
1.6	3	49-GS120000	GASKET - FLANGE - 12in	
2	2	12-CR104800	BARREL - 10ft DIA x 4ft H	
3	1	12-CR106000	BARREL - 10ft DIA x 5ft H	
4	1	12-CR107200	BARREL - 10ft DIA x 6ft H	
5	1	14-CT000000	TOP SLAB ASSEMBLY	
5.1	1	13-HH10HDTE	HATCH - H20 - 10ft - TRIPLEX	
5.2	1	13-VT0000AL	VENT - ALUMINUM - FLUSH	
5.3	1	14-CT10HDTO	TOP SLAB - 10ft DIA - H20 - TRIPLEX	
6	3	17-AC38000B	BOLT KIT - UPPER GUIDE BAR BRACKET	
7	3	17-IG03S4EB	BRACKET - 304SS - INTERMEDIATE GUIDE - 3in	
8	3	17-UG03S4EB	BRACKET - 304SS - UPPER GUIDE BAR - 3in	
9	1	18-BR000000	DISCHARGE PIPE BRACKET - 10ft WW	
10	1	18-BR04STIL	STILLING WELL - LOWER SUPPORT - 4in	
11	1	18-BR04SWUP	STILLING WELL - UPPER SUPPORT - 4in	
12	1	30-PU000000	PUMP SHIPPING CRATE	
12.1	3	30-PU0000EB	PUMP - EBARA 300DLFMU618 - 25HP	
12.2	3	30-PUCABL25	PUMP OPTION: LONG CABLES - 75ft - 25HP	
12.3	3	30-PUTRIM02	PUMP OPTION: IMPELLER TRIM - 15HP THRU 30HP	
12.4	3	32-AC0000EB	LIFTING ASSEMBLY - EBARA	
12.5	3	32-CGSS000D	CABLE SUPPORT GRIP - 304SS - 0.75in-0.99in	
12.6	1	32-PLGE0000	GRIP EYE UNIT	
13	120.0 ft	40-PP0300S4	PIPE - 304SS SCH40 - 3in DIA (6 @ 10ft)	
14	3	42-SF1000D0	CHECK VALVE - SWING FLEX - 10in	
15	3	45-FP100480	SPOOL - DI - 10in DIA x 48in - FLGxPE	
16	3	45-FP101380	SPOOL - DI - 10in DIA x 138in - FLGxPE	
17	3	46-EL1090DI	ELBOW - DI - 10in x 90deg - FLGxFLG	
18	9	49-GS100000	GASKET - FLANGE - 10in	
19	1	50-AC000000	WELL SHIPPING CRATE	
19.1	1	13-KY000000	HATCH KEY	
19.2	4	18-AC00CH00	CABLE HANGER ASSEMBLY - 316SS	
19.3	4	18-HD080000	LIFTING CLUTCH - 8 TON	
19.4	1	51-AC00NSTB	NEVER SIEZE - TUBE	
19.5	190	51-BT060000	JOINT WRAP - 6in - BOA TAPE	
19.6	187.5	51-SE000231	SEALANT - 2in x 1in - CONSEAL CS-231	
19.8	1	62-CG00PT00	CORD GRIP - PRESSURE TRANSDUCER - WEDGE CLAMP	
19.9	1	80-FI00PT00	DESSICANT FILTER - PRESSURE TRANSDUCER	
19.10	4	80-FS20MSNL	FLOAT - 20m - MS1 - NOLTA	
19.11	1	80-PT1500EH	PRESSURE TRANSDUCER - 0-15PSI - 60ft CABLE - E&H	
20	3	59-KB161000	KOR-N-SEAL - 16in CORE x 10in PIPE	
21	21.0 ft	70-SW0400P4	STILLING WELL - 4in PVC PIPE - PERFORATED	

SENSOR AND ELEVATION TABLE		
LEVEL ELEVATION	DISTANCE BETWEEN POINTS	SET POINT DESCRIPTION
-0.32'		INVERT IN
2.00'		BACK UP PUMPS START
	2.00'	SENSOR SPACING
0.00'		BACK UP PUMPS STOP
	0.50'	SENSOR SPACING
-0.50'		BACK UP HL ALARM
-1.50'		HIGH LEVEL ALARM
	1.00'	SENSOR SPACING
-2.50'		LAG PUMP START
	1.00'	SENSOR SPACING
-3.50'		LEAD PUMP START
	3.00'	SENSOR SPACING
-6.50'		PUMP STOP
	3.00'	DISTANCE TO FLOOR
-9.50'		FLOOR ELEVATION

**10'DIAMETER WET WELL
10"DISCHARGE PIPING
EBARA 300DLFMU**

NOTE: ALL DIMENSIONS AND ELEVATIONS SHOWN ARE NOMINAL DIMENSIONS. IT IS THE RESPONSIBILITY OF THE ON-SITE CONTRACTOR OR ROMTEC UTILITIES CUSTOMER (NOT ROMTEC UTILITIES) TO VERIFY THE ACCURACY OF ANY CRITICAL DIMENSIONS OR ELEVATIONS PRIOR TO SETTING OR INSTALLING ANY EQUIPMENT.

COLOR LEGEND

- MAJOR CONCRETE COMPONENTS WITH PRE-INSTALLED COMPONENTS.
- COMPONENTS PRE-ASSEMBLED TO THE EXTENT POSSIBLE AND WILL NEED TO BE FIELD INSTALLED.

NOTE: PRE-ASSEMBLY IS DONE AT ROMTEC UTILITIES' DISCRETION AND MAY CHANGE AT THE TIME OF PRODUCTION.

ALL MATERIALS SHOWN ON THIS SHEET WILL BE SUPPLIED BY ROMTEC UTILITIES AND DELIVERED TO THE SITE AFTER THE HOLE HAS BEEN EXCAVATED AND SHORED. THE CONTRACTOR SHALL SUPPLY A CRANE OF SUFFICIENT SIZE TO LOWER ALL THE CONCRETE PIECES INTO THE HOLE SAFELY. THE CONTRACTOR SHALL INSTALL THE WET WELL (AND VALVE VAULT AND METERING VAULT IF APPLICABLE). ROMTEC UTILITIES WILL PROVIDE A REPRESENTATIVE FOR TECHNICAL ASSISTANCE ON THE DAY OF INSTALLATION TO ANSWER ANY QUESTIONS THAT MAY ARISE. THE CONTRACTOR IS RESPONSIBLE FOR ALL PLUMBING AND ELECTRICAL CONNECTIONS AND INSTALLATION. ITEMS NOTED AS "BY OTHERS" WILL BE PROVIDED AND INSTALLED BY THE CONTRACTOR. ROMTEC UTILITIES WILL NOT INSTALL ANY OF THE COMPONENTS SHOWN ON THIS PAGE.

© 2020 ROMTEC INC. ALL RIGHTS RESERVED. THESE PLANS AND DRAWINGS MAY NOT BE REPRODUCED, ADAPTED, OR FURTHER DISTRIBUTED, AND NO COMPONENTS MAY BE CONSTRUCTED FROM THESE PLANS, WITHOUT WRITTEN PERMISSION OF ROMTEC, INC.

FOR DESIGN REVIEW

REV	DATE	DESCRIPTION	BY
1			

VERIFY SCALE
0 1"
DATE: 2-5-20

ROMTEC UTILITIES
18240 NORTH BANK ROAD
ROSEBURG, OREGON 97470
PHONE: (541) 496-9678
WWW.ROMTECUTILITIES.COM

PROLOGIS MEADOWS SITE A
PORTLAND, OR
WET WELL ASSEMBLY
COMPONENT DRAWING
MECHANICAL SHEET
3 OF 4