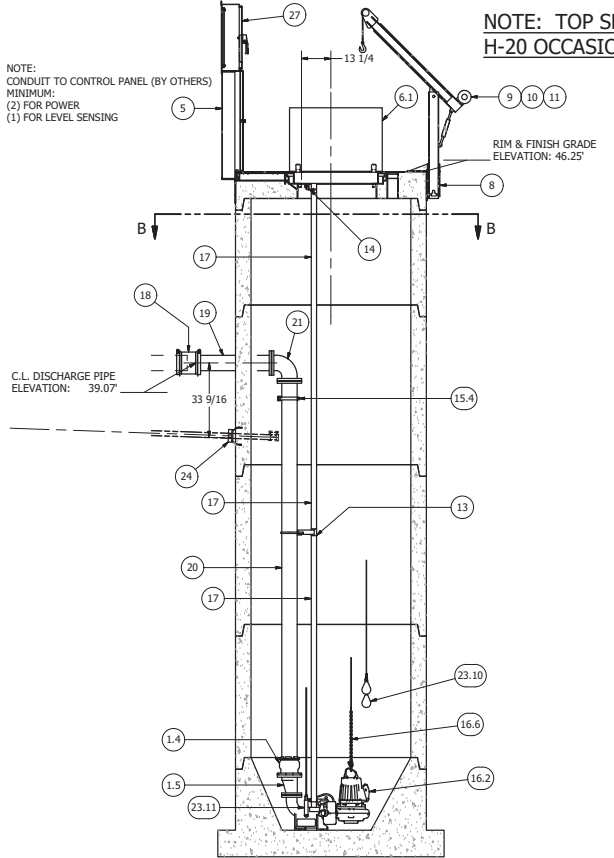
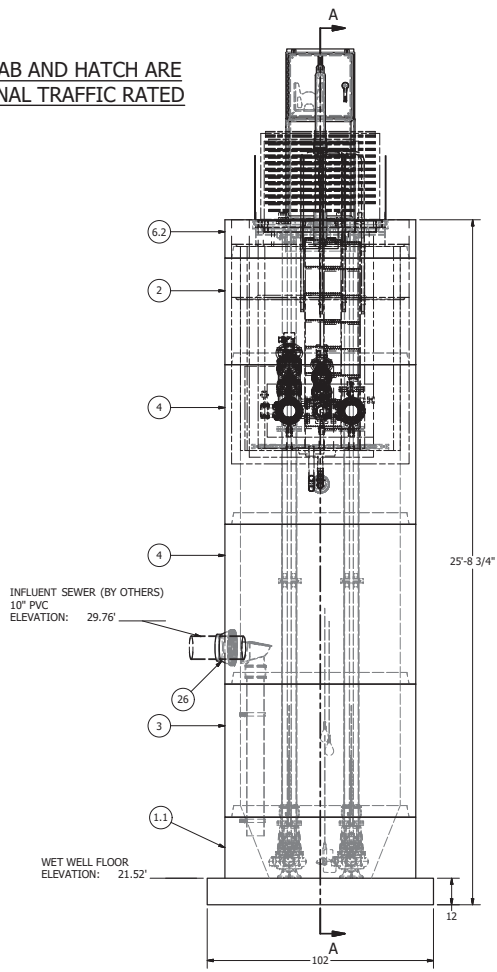


SENSOR AND ELEVATION TABLE		
LEVEL ELEVATION	DISTANCE BETWEEN POINTS	SET POINT DESCRIPTION
29.76		INVERT IN
28.65		BACK UP PUMPS START
		SENSOR SPACING
N/A		BACK UP PUMPS STOP
		SENSOR SPACING
27.65		BACK UP HL ALARM
27.15		HIGH LEVEL ALARM
	0.50	SENSOR SPACING
26.65		LAG PUMP START
	1.00	SENSOR SPACING
25.65		LEAD PUMP START
	1.40	SENSOR SPACING
24.25		PUMP STOP
	2.73	DISTANCE TO FLOOR
21.52		FLOOR ELEVATION



NOTE: TOP SLAB AND HATCH ARE H-20 OCCASIONAL TRAFFIC RATED

NOTE:
CONDUIT TO CONTROL PANEL (BY OTHERS)
MINIMUM:
(2) FOR POWER
(1) FOR LEVEL SENSING



PARTS LIST			
ITEM	QTY	STOCK NUMBER	DESCRIPTION
1	1	10-CB000000	BASE SLAB ASSEMBLY
1.1	1	10-CB06HSQ	BASE - MW - 6ft DIA - RU DESIGN - SQUARE
1.2	2	31-EL0408FL	DISCHARGE ELBOW - 4in - FLYGT
1.3	2	31-HW0AKS6	ANCHOR KIT - 316SS - DISCHARGE ELBOW
1.4	2	44-AD06PAL	FLANGE ADAPTER - 6in - ALPHA
1.5	2	48-RO0640E	REDUCER - DI - 6in x 4in - ECCENTRIC
1.6	2	49-GS040000	GASKET - FLANGE - 4in
2	1	12-CR064800	BARREL - 6ft DIA x 4ft H
3	1	12-CR066000	BARREL - 6ft DIA x 5ft H
4	2	12-CR067200	BARREL - 6ft DIA x 6ft H
5	1	13-DS3030S5	DISCONNECT STAND - SS - 30in x 30in x 8in
6	1	14-CT000000	TOP SLAB ASSEMBLY
6.1	1	13-HH06HDCV	HATCH - 6ft - H20 - W/ CABLE TRAY & VENT
6.2	1	14-CT06H000	TOP SLAB - 6ft DIA - H20
7	1	15-DB999999	DROP BOWL ASSEMBLY
7.1	2	15-BR085535	BRACKET - PIPE - 8in - SS35 - SDR35
7.2	1	15-CP000000	COUPLING - FERCO - 8in
7.3	1	15-DB810868	DROP BOWL - 8in thru 18in INLET x 8in OUTLET - 6ft - 8ft WET WELL
7.4	6.0	70-PP08000R	PIPE - PVC SDR35 - 8in DIA
8	1	16-BB2PC0BW	CRANE BASE - SIDE MOUNT - 6ft RU DESIGN
9	1	16-CC2000PC	CRANE - 2000lb - POWDERCOAT
10	1	16-MN0000E2	WINCH - ELECTRIC - 6ft PENDANT - ENAMEL
11	1	16-WR1Q45E0	WIRE ROPE - SS - 0.25in x 45ft
12	2	17-AC38000B	BOLT KIT - UPPER GUIDE BAR BRACKET
13	2	17-IG2654FL	BRACKET - 304SS - INTERMEDIATE GUIDE BAR
14	2	17-UG0200FL	BRACKET - 316SS - UPPER GUIDE BAR - 2in
15	1	18-BR000000	BRACKET ASSEMBLY - 316SS - DISCHARGE SUPPORT
15.1	2	18-AC000000	BOLT KIT - 316SS - WALL BRACKET
15.2	2	18-AC00001B	WALL BRACKET - DISCHARGE SUPPORT
15.3	2	18-AC010H5B	BOLT KIT - DISCHARGE CLAMP - BOLT, WASHER, LOCK NUT
15.4	2	18-AC06CL56	DISCHARGE CLAMP - 316SS - 6in - STRUTMOUNT
15.5	4.3	50-US0000S6	UNISTRUT - 316SS - SLOTTED
16	1	30-PU000000	PUMP SHIPPING CRATE
16.1	1	30-MFVFLYGT	MIX FLUSH VALVE - FLYGT
16.2	2	30-PU0000FL	PUMP - FLYGT NP312ZHT
16.3	2	32-B50H00S5	BOW SHACKLE - 316SS - 1-2in
16.4	2	32-B53800S5	BOW SHACKLE - 316SS - 3-8in
16.5	2	32-CG0000S5	CORD GRIP - .750in - .990 - SS
16.6	4.0	32-PL9320S6	CHAIN - 316SS - 9-32in SS
16.7	1	32-PLGE0000	GRIP EYE UNIT
16.8	2	32-PLLSANVL	LIFTING SLING ASSEMBLY - COATED CABLE x 27ft TOTAL LENGTH
17	92.0	40-PP0200S4	PIPE - 304SS SCH40 - 2in DIA (4 @ 10ft & 4 @ 13ft)
18	2	44-CP060AD0	COUPLING - 6in - ALPHA
19	2	45-FP060360	SPOOL - DI - 6in DIA x 36in - FLGxPE
20	2	45-FP061800	SPOOL - DI - 6in DIA x 180in - FLGxPE
21	2	46-EL0690DI	ELBOW - DI - 6in x 90deg - FLGxFLG
22	4	49-GS060000	GASKET - FLANGE - 6in
23	1	50-AC000000	WELL SHIPPING CRATE
23.1	5	12-GS000001	BARREL - GASKET
23.2	1	13-KY000000	HATCH KEY
23.3	3	18-AC000000	CABLE HANGER ASSEMBLY
23.4	4	18-HD040000	LIFTING CLUTCH - 4 TON
23.5	1	51-AC00N5TB	NEVER SIEZE - TUBE
23.6	115	51-BT060000	JOINT WRAP - 6in - BOA TAPE
23.7	145	51-SE0181SL	JOINT SEALANT - 1in - CONSEAL CS-202
23.8	1	80-BR00PT00	BRACKET - PRESSURE TRANSDUCER
23.9	1	80-FI00PT00	DESSICANT FILTER - PRESSURE TRANSDUCER
23.10	2	80-FS20MSNL	FLOAT - 20m - MS1 - NOLTA
23.11	1	80-PT1500EH	PRESSURE TRANSDUCER - 0-15PSI - 60ft CABLE - E & H
24	1	59-KB080400	KOR-N-SEAL - 8in CORE - 4in thru 1.5in PIPE
25	2	59-KB120601	KOR-N-SEAL - 12in CORE x 6in DIPS PIPE
26	1	59-KB161800	KOR-N-SEAL - 16in CORE x 18in PIPE
27	1	61-EP3000DC	DISCONNECT PANEL - 15-30FLA

FOR CONSTRUCTION

NOTE: CONTRACTOR TO SEAL ALL CONCRETE JOINTS AND PIPE PENETRATIONS WITH NON-SHRINK GROUT

NOTE: ALL DIMENSIONS AND ELEVATIONS SHOWN ARE NOMINAL DIMENSIONS. IT IS THE RESPONSIBILITY OF THE ON-SITE CONTRACTOR OR ROMTEC UTILITIES CUSTOMER (NOT ROMTEC UTILITIES) TO VERIFY THE ACCURACY OF ANY CRITICAL DIMENSIONS OR ELEVATIONS PRIOR TO SETTING OR INSTALLING ANY EQUIPMENT.

6" DIAMETER WET WELL
6" DISCHARGE PIPING
FLYGT NP 3127 PUMPS
6" - 687 VALVE VAULT

ALL MATERIALS SHOWN ON THIS SHEET WILL BE SUPPLIED BY ROMTEC UTILITIES AND DELIVERED TO THE SITE AFTER THE HOLE HAS BEEN EXCAVATED AND SHORED. THE CONTRACTOR SHALL SUPPLY A CRANE OF SUFFICIENT SIZE TO LOWER ALL THE CONCRETE PIECES INTO THE HOLE SAFELY. THE CONTRACTOR SHALL INSTALL THE WET WELL (AND VALVE VAULT AND METERING VAULT IF APPLICABLE). ROMTEC UTILITIES WILL PROVIDE A REPRESENTATIVE FOR TECHNICAL ASSISTANCE ON THE DAY OF INSTALLATION TO ANSWER ANY QUESTIONS THAT MAY ARISE. THE CONTRACTOR IS RESPONSIBLE FOR ALL PLUMBING AND ELECTRICAL CONNECTIONS AND INSTALLATION. ITEMS NOTED AS "BY OTHERS" WILL BE PROVIDED AND INSTALLED BY THE CONTRACTOR. ROMTEC UTILITIES WILL NOT INSTALL ANY OF THE COMPONENTS SHOWN ON THIS PAGE.

© 2018 ROMTEC INC. ALL RIGHTS RESERVED. THESE PLANS AND DRAWINGS MAY NOT BE REPRODUCED, ADAPTED, OR FURTHER DISTRIBUTED, AND NO COMPONENTS MAY BE CONSTRUCTED FROM THESE PLANS, WITHOUT WRITTEN PERMISSION OF ROMTEC, INC.

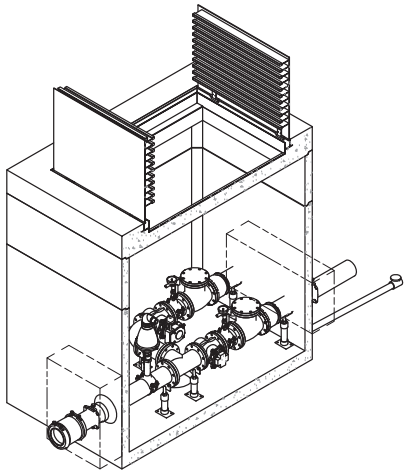
REV	DATE	DESCRIPTION
1	11/20/2018	REVISED ELEVATIONS PER COMMENTS
2	11/20/2018	UNPAKED FOR PRODUCTION LAUNCH
3	12/27/2018	REVISED PER COMMENTS

DATE	DATE	DATE
11/20/2018	11/20/2018	8/20/2018

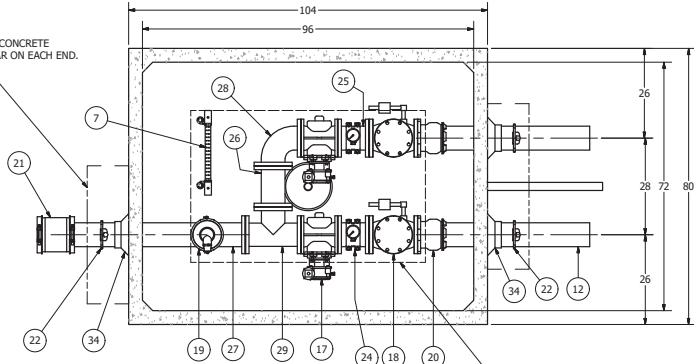
WESTERN SCALE

 0 1" = 10'-0"
 ROMTEC UTILITIES
 18240 NORTH BANK ROAD
 ROSEBURG, OREGON 97470
 PHONE: (503) 995-9678
 WWW.ROMTECUTILITIES.COM

CHARLES T PARKER WAY
 SCOPHOSE, OR
 6ft WET WELL & 6in PIPING



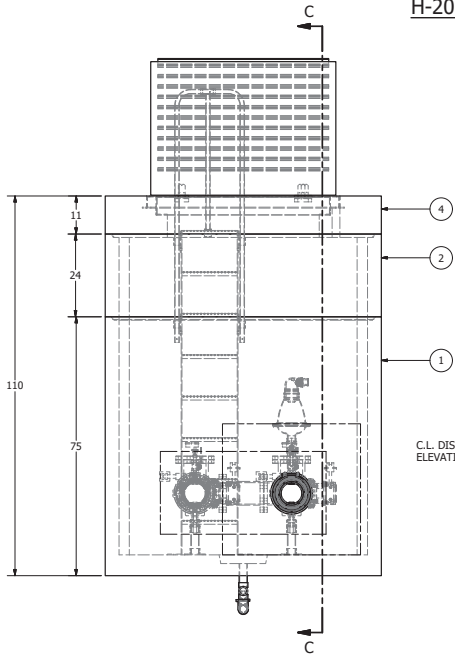
12" THICK CAST-IN-PLACE CONCRETE THRUST RESTRAINT COLLAR ON EACH END. (BY OTHERS)



SECTION D-D
SCALE 1 / 18

HATCH OPENING
44" X 68"

NOTE: TOP SLAB AND HATCH ARE H-20 OCCASIONAL TRAFFIC RATED

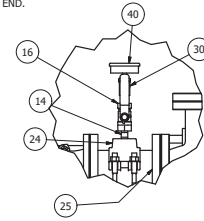


SECTION C-C
SCALE 1 / 18

C.L. DISCHARGE
ELEVATION: 39.07'

FORCE MAIN (BY OTHERS)
SIZE: 4" x 6"
TYPE: PVC C900 DR18

12" THICK CAST-IN-PLACE CONCRETE THRUST RESTRAINT COLLAR ON EACH END. (BY OTHERS)



DETAIL E
SCALE 1 / 8

PARTS LIST			
ITEM	QTY	STOCK NUMBER	DESCRIPTION
1	1	20-CB687000	BASE - VV - 687
2	1	22-CB687024	RISER - VV - 687 x 2ft
3	1	23-HH6870HE	HATCH - VV - 687 - H20
4	1	24-CT687HD0	TOP SLAB - VV - 687 - H20
5	2	25-KV0000BR	BRACKET - VALVE KEY
6	1	25-KV0000GW	VALVE KEY - EXTENDABLE GATE WRENCH
7	1	25-L0071000	LADDER - ASSEMBLY - 7ft-10in
8	3	25-PS06589F	PIPE STAND - FLANGE - 6in
9	2	25-PS06592S	PIPE STAND - 304SS - 6in SADDLE
10	5	25-PS068000	PIPE STAND BASE - 304SS - 2in - 2 BOLT
11	3.7 ft	40-PP0200S4	PIPE - 304SS SCH40 - 2in DIA
12	8.0 ft	40-PP0600D0	PIPE - DI - 6in DIA (2 @ 4ft)
13	1	40-TT0208S4	NIPPLE - 304SS - 2in DIA x 8in
14	4	40-TT0H02S6	NIPPLE - 316SS - 0.5in DIA x 2in
15	1	41-BV0200S6	BALL VALVE - 316SS - 2in
16	2	41-BV0H00S6	BALL VALVE - 316SS - 0.5in
17	2	41-PL0000D0	PLUG VALVE - 6in - GEAR OP NUT
18	2	42-LW0600D0	CHECK VALVE - LEVER & WEIGHT - 6in
19	1	43-AV020ARI	VALVE - AIR VACUUM RELEASE - 2in - ARI
20	2	44-AD06RML	FLANGE ADAPTER - 6in - ALPHA
21	1	44-CP060AD0	COUPLING - 6in - ALPHA
22	3	44-RG060STR	RETAINER GLAND - 6in - HEAVY DUTY
23	1	44-TS060200	TAPPING SADDLE - 6in PIPE x 2in FNPT
24	2	44-TS060H00	TAPPING SADDLE - 6in x .5in
25	2	45-FF060090	SPOOL - DI - 6in DIA x 9in - FLGXFLG
26	1	45-FF061130	SPOOL - DI - 6in DIA x 11.75in - FLGXFLG
27	1	45-FF060540	SPOOL - DI - 6in DIA x 54in - FLGXPE
28	1	46-EL0600DI	ELBOW - DI - 6in x 90deg - FLGXFLG
29	1	46-TE0600DI	TEE - DI - 6in - FLGXFLG
30	2	48-PL0000XK	PLUG - 304SS - .25in NPT - HEX SOCKET
31	9	49-GS060000	GASKET - FLANGE - 6in
32	61	51-BT060000	JOINT WRAP - 6in - BOA TAPE
33	72.5 ft	51-SE0101SL	JOINT SEALANT - 1in - CONSEAL CS-202
34	3	59-KB1206DI	KOR-N-SEAL - 12in CORE x 6in DIPS PIPE
35	10.5 ft	70-PP0200P4	PIPE - PVC SCH40 - 2in DIA
36	1	72-DB020SP8	DRAINBACK VALVE - PVC - 2in
37	1	76-EL029040	ELBOW - PVC SCH40 - 2in x 90deg - SLIP
38	2	76-EL02904S	ELBOW - PVC SCH40 - 2in x 90deg - SLIP x SPIG
39	1	76-TE020240	TEE - PVC SCH40 - 2in - SLIP
40	2	81-PG3H00QB	PRESSURE GAUGE - 3.5in DIA x .25in MNPT BACK - 6#H
41	2	83-GI0HF00F	DIAPHRAGM SEAL - 0.5in FNPT x 0.25in FNPT
42	2	84-PX0000TR	PROXIMITY SWITCH - TURCK
43	2	84-PX00CCTR	PROXIMITY SWITCH - CONNECTING CABLE - TURCK

FOR CONSTRUCTION

**687 VALVE VAULT
6" PIPING AND VALVES
PUMPING PORT & LADDER**

ALL MATERIALS SHOWN ON THIS SHEET WILL BE SUPPLIED BY ROMTEC UTILITIES AND DELIVERED TO THE SITE AFTER THE HOLE HAS BEEN EXCAVATED AND SHORED. THE CONTRACTOR SHALL SUPPLY A CRANE OF SUFFICIENT SIZE TO LOWER ALL THE CONCRETE PIECES INTO THE HOLE SAFELY. THE CONTRACTOR SHALL INSTALL THE WET WELL (AND VALVE VAULT AND METERING VAULT IF APPLICABLE). ROMTEC UTILITIES WILL PROVIDE A REPRESENTATIVE FOR TECHNICAL ASSISTANCE ON THE DAY OF INSTALLATION TO ANSWER ANY QUESTIONS THAT MAY ARISE. THE CONTRACTOR IS RESPONSIBLE FOR ALL PLUMBING AND ELECTRICAL CONNECTIONS AND INSTALLATION. ITEMS NOTED AS "BY OTHERS" WILL BE PROVIDED AND INSTALLED BY THE CONTRACTOR. ROMTEC UTILITIES WILL NOT INSTALL ANY OF THE COMPONENTS SHOWN ON THIS PAGE.

© 2018 ROMTEC INC. ALL RIGHTS RESERVED. THESE PLANS AND DRAWINGS MAY NOT BE REPRODUCED, ADAPTED, OR FURTHER DISTRIBUTED, AND NO COMPONENTS MAY BE CONSTRUCTED FROM THESE PLANS, WITHOUT WRITTEN PERMISSION OF ROMTEC, INC.

NOTE: ALL DIMENSIONS AND ELEVATIONS SHOWN ARE NOMINAL DIMENSIONS. IT IS THE RESPONSIBILITY OF THE ON-SITE CONTRACTOR OR ROMTEC UTILITIES CUSTOMER (NOT ROMTEC UTILITIES) TO VERIFY THE ACCURACY OF ANY CRITICAL DIMENSIONS OR ELEVATIONS PRIOR TO SETTING OR INSTALLING ANY EQUIPMENT.

REVISION HISTORY

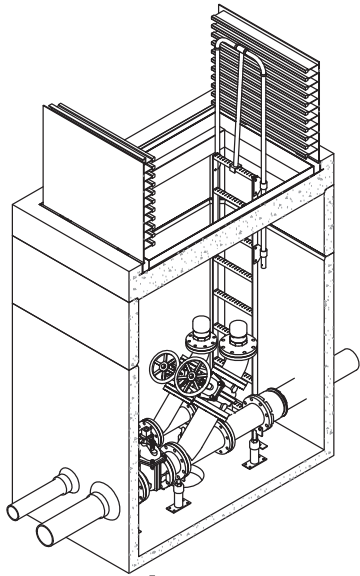
NO.	DATE	DESCRIPTION
1	11/27/2018	REVISED PER COMMENTS
2	11/20/2018	REVISED PER COMMENTS
3	8/20/2018	REVISED PER COMMENTS

DATE: 4-26-18

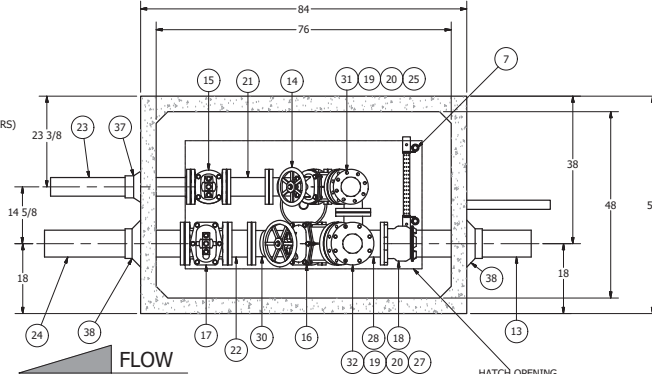
ROMTEC UTILITIES
18240 NORTH BANK ROAD
ROSELBURG, OREGON 97470
PHONE: (503) 995-9678
WWW.ROMTECUTILITIES.COM

CHARLES T PARKER WAY
SCAPPOOSE, OR
VALVE VAULT - 6' X 8'
6in PIPING
W/ PUMPING PORT

MECHANICAL SHEET
2 OF 6



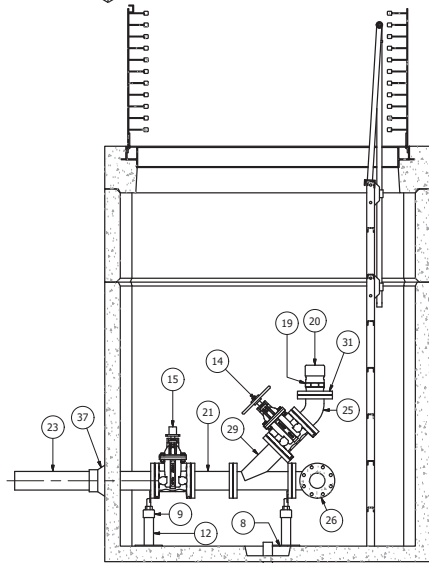
FORCE MAIN (BY OTHERS)
SIZE: 4" & 6"
TYPE: PVC C900 DR 18



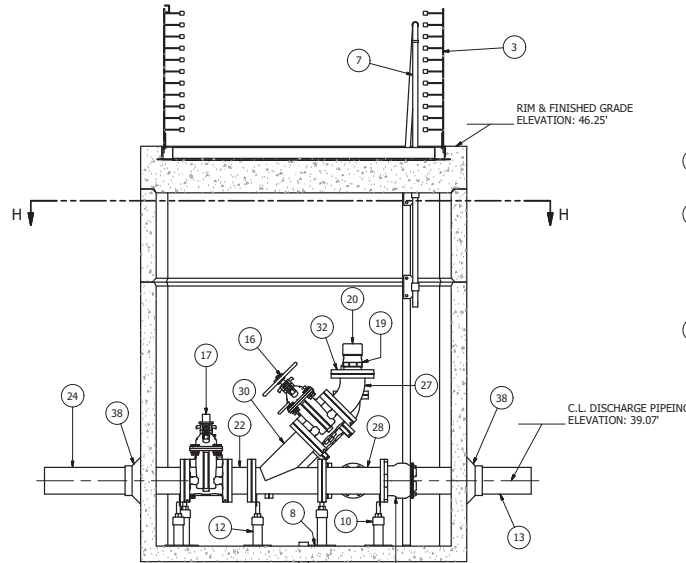
SECTION H-H
SCALE 1 / 16

HATCH OPENING
33" X 61" CLEAR

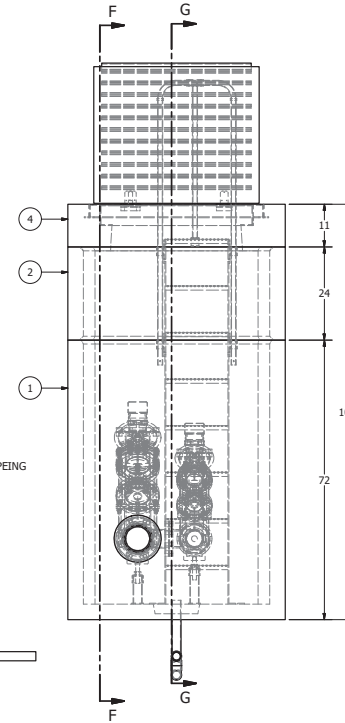
**NOTE: TOP SLAB AND HATCH ARE
H-20 OCCASIONAL TRAFFIC RATED**



SECTION G-G
SCALE 1 / 16



SECTION F-F
SCALE 1 / 16



**577 VALVE VAULT
4" & 6" PIPING AND VALVES
WITH PUMPING PORTS**

FOR CONSTRUCTION

NOTE: CONTRACTOR TO SEAL ALL CONCRETE JOINTS
AND PIPE PENETRATIONS WITH NON-SHRINK GROUT

NOTE: ALL DIMENSIONS AND ELEVATIONS SHOWN
ARE NOMINAL DIMENSIONS. IT IS THE RESPONSIBILITY
OF THE ON-SITE CONTRACTOR OR ROMTEC UTILITIES
CUSTOMER (NOT ROMTEC UTILITIES) TO VERIFY THE
ACCURACY OF ANY CRITICAL DIMENSIONS OR ELEVATIONS
PRIOR TO SETTING OR INSTALLING ANY EQUIPMENT.

PARTS LIST			
ITEM	QTY	STOCK NUMBER	DESCRIPTION
1	1	20-CB577000	BASE - VV - 577
2	1	22-CB577024	RISER - VV - 577 x 2ft
3	1	23-HH5770HE	HATCH - VV - 577 - H20
4	1	24-CT577HD0	TOP SLAB - VV - 577 - H20
5	2	25-KY0000BR	BRACKET - VALVE KEY
6	1	25-KY0000GW	VALVE KEY - EXTENDABLE GATE WRENCH
7	1	25-LD071000	LADDER - ASSEMBLY - 7ft-10in
8	5	25-PS0000APL	PIPE STAND BASE PLATE - 304SS
9	2	25-PS04589F	PIPE STAND - 304SS - 4in FLANGE
10	3	25-PS06589F	PIPE STAND - FLANGE - 6in
11	1	25-XXXX	DRAIN - VALVE VAULT
11.1	20ft	70-PP0200P4	PIPE - PVC SCH40 - 2in DIA
11.2	3	76-EL029040	ELBOW - PVC SCH40 - 2in x 90deg - SLIP
12	4ft	40-PP0200S4	PIPE - 304SS SCH40 - 2in DIA
13	3ft	40-PP0600D0	PIPE - DI - 6in DIA CL52
14	1	41-GV040HD0	GATE VALVE - 4in - HANDWHEEL
15	1	41-GV040ND0	GATE VALVE - 4in - OP NUT
16	1	41-GV060HD0	GATE VALVE - 6in - HANDWHEEL
17	1	41-GV060ND0	GATE VALVE - 6in - OP NUT
18	1	44-AD060PAL	FLANGE ADAPTER - 6in - ALPHA
19	2	44-CL0404DM	CAM LOCK - ALUM - 4in - PLUG&NPT
20	2	44-CL0404CAP	DUST CAP - ALUM - 4in - CAMLOCK
21	1	45-FF04103Q	SPOOL - DI - 4in DIA x 10.75in - FLGXFLG
22	1	45-FF0600E0	SPOOL - DI - 6in DIA x 6in - FLGXFLG
23	1	45-FF0603E0	SPOOL - DI - 4in DIA x 36in - FLGXPE
24	1	45-FF0603E0	SPOOL - DI - 6in DIA x 36in - FLGXPE
25	1	46-EL0445DI	ELBOW - DI - 4in x 45deg - FLGXFLG
26	1	46-EL0490DI	ELBOW - DI - 4in x 90deg - FLGXFLG
27	1	46-EL0645DI	ELBOW - DI - 6in x 45deg - FLGXFLG
28	1	46-TE0604DI	TEE - DI - 6in x 4in - FLGXFLG
29	1	46-YL0404DI	WYE - DI - 4in FLGXFLG
30	1	46-YL0606DI	WYE - DI - 6in - FLGXFLG
31	1	48-FL040FD0	FLANGE - DI - 4in - BLIND - 4" FNPT TAP
32	1	48-FL0604D0	FLANGE - DI - 6in - BLIND - 4" FNPT TAP
33	8	49-GS040000	GASKET - FLANGE - 4in
34	7	49-GS060000	GASKET - FLANGE - 6in
35	47	51-BT060000	JOINT WRAP - 6in - BOA TAPE
36	58	51-SE0101SL	JOINT SEALANT - 1in - CONSEAL CS-202
37	1	59-KB080400	KOR-N-SEAL - 8in CORE - 4in thru 1.5in PIPE
38	2	59-KB1206DI	KOR-N-SEAL - 12in CORE x 6in DIPS PIPE

© 2018 ROMTEC INC. ALL RIGHTS RESERVED. THESE
PLANS AND DRAWINGS MAY NOT BE REPRODUCED,
ADAPTED, OR FURTHER DISTRIBUTED, AND NO
COMPONENTS MAY BE CONSTRUCTED FROM THESE
PLANS, WITHOUT WRITTEN PERMISSION OF ROMTEC, INC.

REVISION HISTORY

NO.	DATE	DESCRIPTION
1	11/20/2018	REVISED ELEVATIONS PER COMMENTS
2	12/27/2018	REVISED FOR PRODUCTION LAUNCH

DATE: 8-20-18

VERTICAL SCALE: 1" = 1'-0"

ROMTEC UTILITIES
18240 NORTH BANK ROAD
ROSEBURG, OREGON 97470
PHONE: (503) 995-9678
WWW.ROMTECUTILITIES.COM

CHARLES T PARKER WAY
SCAPPOOSE, OR
FORCE MAIN MANIFOLD VAULT
4" & 6" PIPING
DUAL PIGGING PORT

MECHANICAL SHEET
5 OF 6