

## 2.01 SITE LAYOUT

### PRELIMINARY SITE LAYOUT

BASED ON SITE PLANS RECEIVED 7-19-19

WET WELL DEPTH: 29.5'

DISTANCE TO TERMINATION: 25'

NOTE: CABLES TO BE TERMINATED IN APPROVED JUNCTION BOX OR CONTROL PANEL.

APPROX. CABLE LENGTH NEEDED: 60'

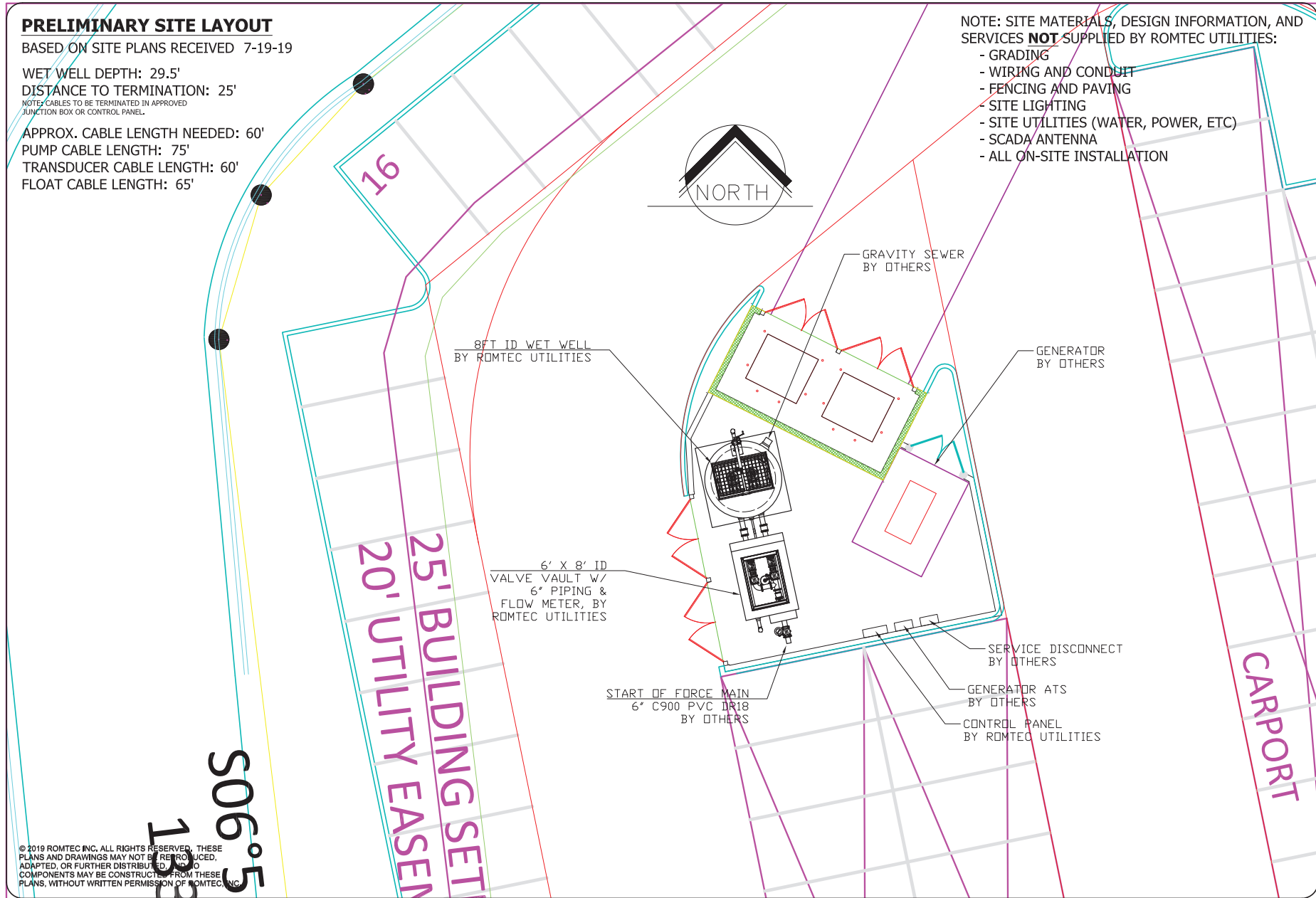
PUMP CABLE LENGTH: 75'

TRANSDUCER CABLE LENGTH: 60'

FLOAT CABLE LENGTH: 65'

NOTE: SITE MATERIALS, DESIGN INFORMATION, AND SERVICES **NOT** SUPPLIED BY ROMTEC UTILITIES:

- GRADING
- WIRING AND CONDUIT
- FENCING AND PAVING
- SITE LIGHTING
- SITE UTILITIES (WATER, POWER, ETC)
- SCADA ANTENNA
- ALL ON-SITE INSTALLATION



© 2019 ROMTEC INC. ALL RIGHTS RESERVED. THESE PLANS AND DRAWINGS MAY NOT BE REPRODUCED, ADAPTED, OR FURTHER DISTRIBUTED AND NO COMPONENTS MAY BE CONSTRUCTED FROM THESE PLANS, WITHOUT WRITTEN PERMISSION OF ROMTEC INC.

DATE: 7-29-19	REVISION HISTORY	
NO.	DATE	DESCRIPTION
1	9-23-19	ADDED COMMENTS TO VALVE VAULT
2		
3	10/9/2019	ADDED COMMENTS TO VALVE VAULT
4	7-16-20	UPDATED LIFT COLLAR PER PRECASTER MATCH PRECASTER COMPONENTS
AD		

VERTICAL SCALE: 1" = 1'

DATE: 7-29-19

DESIGN: AD  
CHECK: RB

**ROMTEC UTILITIES**  
18240 NORTH BANK ROAD  
ROSEBURG, OREGON 97470  
WWW.ROMTECUTILITIES.COM

DOLCE VITA AT GRANBURY  
GRANBURY, TX  
WASTEWATER PUMP STATION  
LAYOUT DRAWING

MECHANICAL SHEET  
2 OF 4