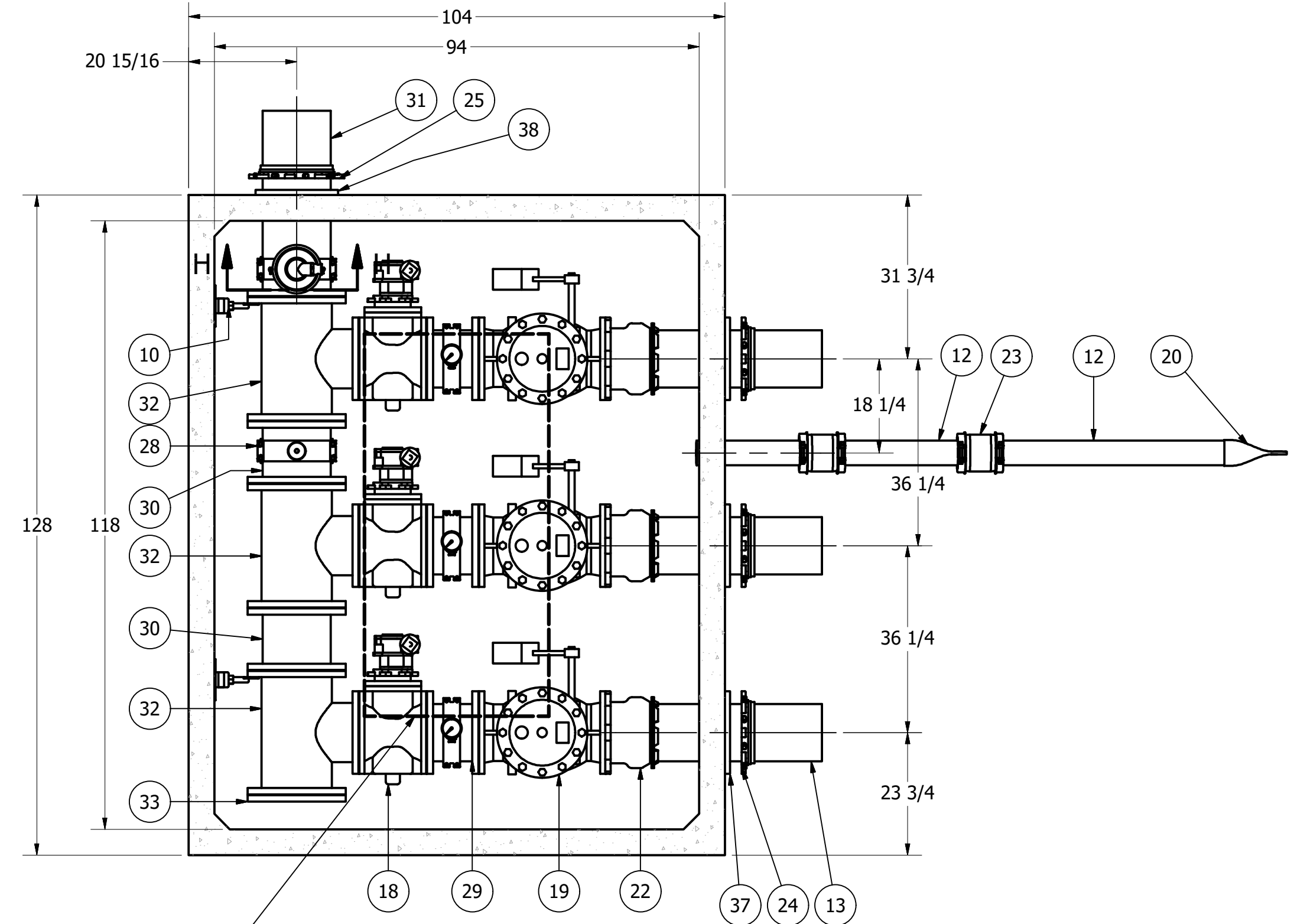


FORCE MAIN (BY OTHERS)
 SIZE: 18"
 TYPE: HDPE DR17 IPS



HATCH OPENING
 35" x 74" CLEAR

SECTION E-E
 SCALE 1 / 22

**NOTE: TOP SLAB AND HATCH ARE
 AIRCRAFT TRAFFIC RATED**

**810 VALVE VAULT
 10" & 12" PIPING AND VALVES
 WITH ARV, PRESSURE SWITCH &
 GAUGES**

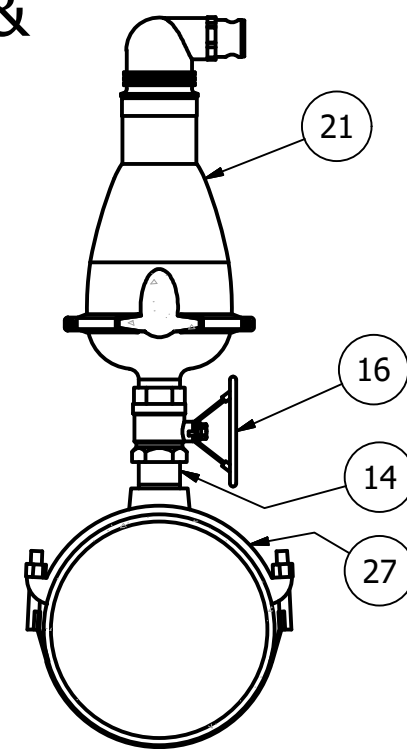
FOR DESIGN REVIEW

COLOR LEGEND

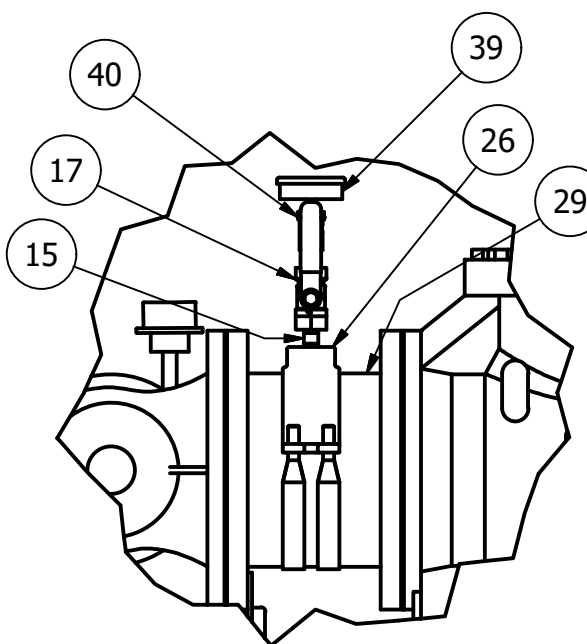
	MAJOR CONCRETE COMPONENTS WITH PRE-INSTALLED COMPONENTS.
	COMPONENTS PRE-ASSEMBLED TO THE EXTENT POSSIBLE AND WILL NEED TO BE FIELD INSTALLED.

NOTE: PRE-ASSEMBLY IS DONE AT ROMTEC UTILITIES' DISCRETION AND MAY CHANGE AT THE TIME OF PRODUCTION.

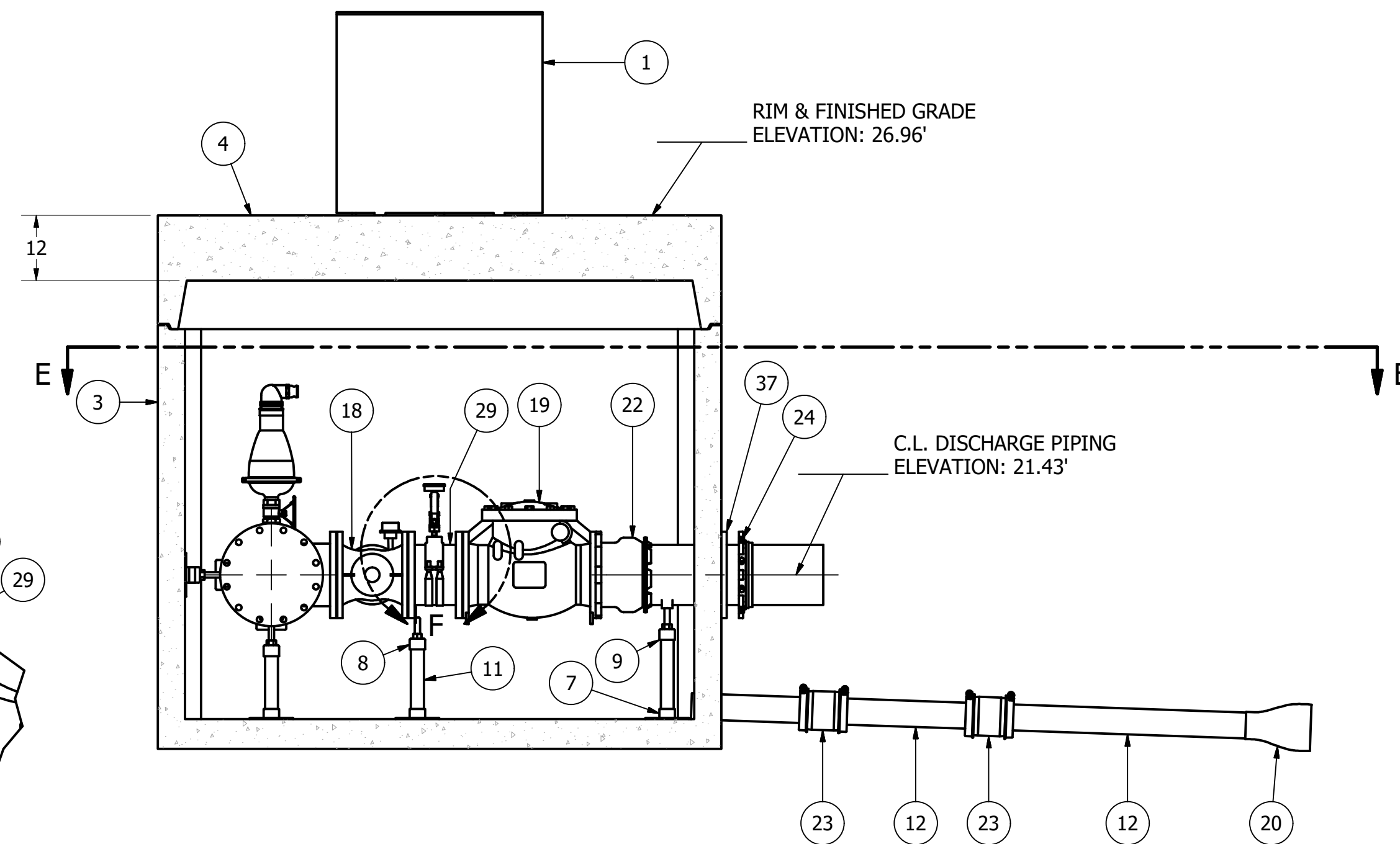
ALL MATERIALS SHOWN ON THIS SHEET WILL BE SUPPLIED BY ROMTEC UTILITIES AND DELIVERED TO THE SITE AFTER THE HOLE HAS BEEN EXCAVATED AND SHORED. THE CONTRACTOR SHALL SUPPLY A CRANE OF SUFFICIENT SIZE TO LOWER ALL THE CONCRETE PIECES INTO THE HOLE SAFELY. THE CONTRACTOR SHALL INSTALL THE WET WELL (AND VALVE VAULT AND METERING VAULT IF APPLICABLE). ROMTEC UTILITIES WILL PROVIDE A REPRESENTATIVE FOR TECHNICAL ASSISTANCE ON THE DAY OF INSTALLATION TO ANSWER ANY QUESTIONS THAT MAY ARISE. THE CONTRACTOR IS RESPONSIBLE FOR ALL PLUMBING AND ELECTRICAL CONNECTIONS AND INSTALLATION. ITEMS NOTED AS "BY OTHERS" WILL BE PROVIDED AND INSTALLED BY THE CONTRACTOR. ROMTEC UTILITIES WILL NOT INSTALL ANY OF THE COMPONENTS SHOWN ON THIS PAGE.



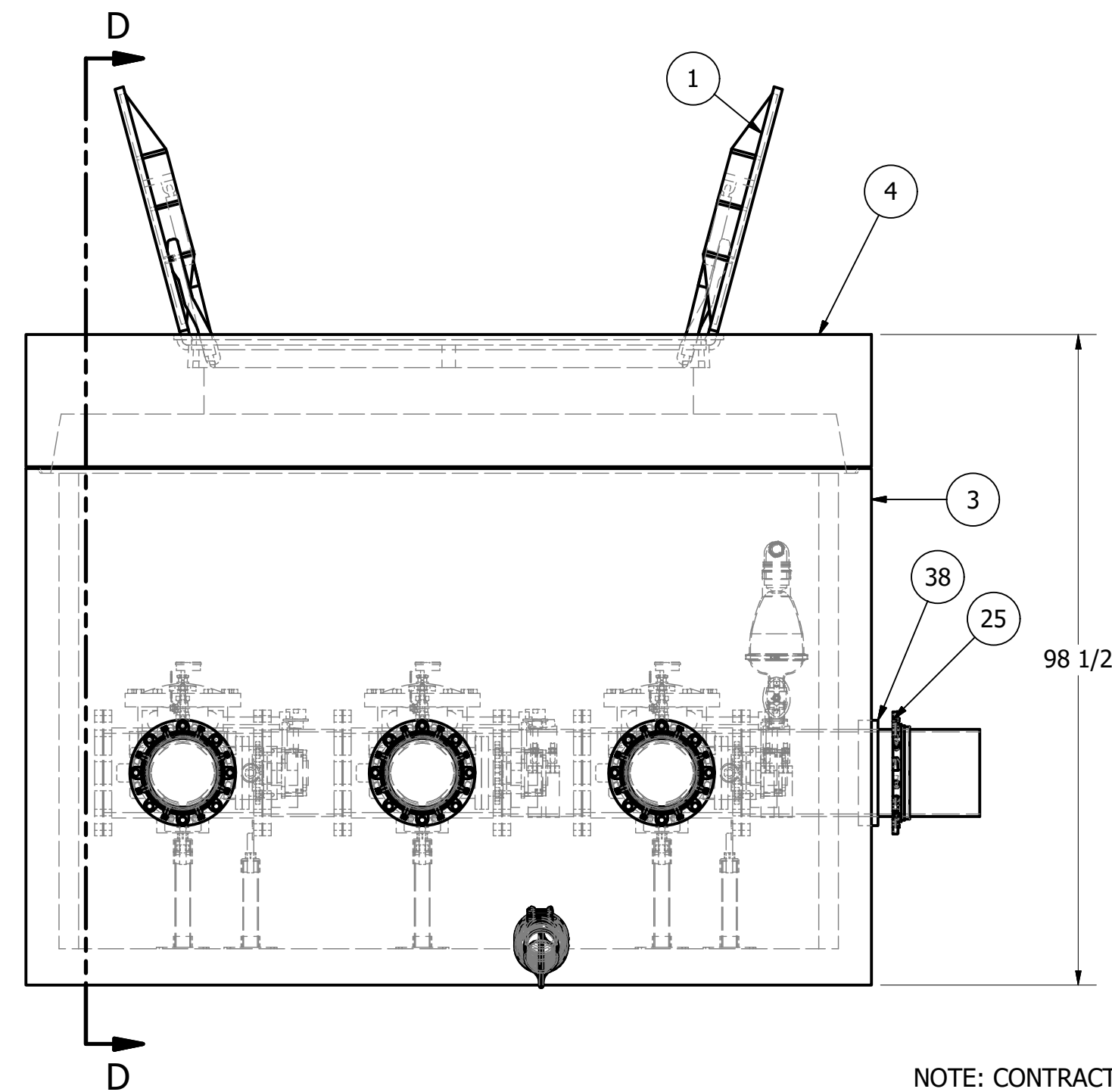
SECTION H-H
 SCALE 1 / 11



DETAIL F
 SCALE 1 / 11



SECTION D-D
 SCALE 1 / 22



NOTE: CONTRACTOR TO SEAL ALL CONCRETE JOINTS AND PIPE PENETRATIONS WITH NON-SHRINK GROUT

NOTE: ALL DIMENSIONS AND ELEVATIONS SHOWN ARE NOMINAL DIMENSIONS. IT IS THE RESPONSIBILITY OF THE ON-SITE CONTRACTOR OR ROMTEC UTILITIES CUSTOMER (NOT ROMTEC UTILITIES) TO VERIFY THE ACCURACY OF ANY CRITICAL DIMENSIONS OR ELEVATIONS PRIOR TO SETTING OR INSTALLING ANY EQUIPMENT.

PARTS LIST				
ITEM	QTY	STOCK NUMBER	DESCRIPTION	
1	1	13-HH3674D0	HATCH - DI - 36in x 74in	
2	1	13-SG999999	SAFETY NETTING	
3	1	20-CB810200	BASE - VV - 810 - 2-PIECE	
4	1	24-CT810HD2	TOP SLAB - VV - 810-2 - H20	
5	2	25-KY0000BR	BRACKET - VALVE KEY	
6	1	25-KY0000SS	VALVE KEY - SPECIAL SWIVEL	
7	10	25-PS00BASE	PIPE STAND - BASE	
8	3	25-PS10S89F	PIPE STAND - FLG S89 - 10in - NO BASE	
9	3	25-PS10S92S	PIPE STAND - SAD S92 - 10in - NO BASE	
10	4	25-PS12S89F	PIPE STAND - 12in FLANGE	
11	9.7 ft	40-PP0200S4	PIPE - 304SS SCH40 - 2in DIA	
12	8.5 ft	40-PP0400D0	PIPE - DI - 4in DIA	
13	10.0 ft	40-PP1000D0	PIPE - DI - 10in DIA	
14	1	40-TT0203S4	NIPPLE - 304SS - 2in DIA x 3in	
15	6	40-TT0H02S4	NIPPLE - 304SS - 0.5in DIA x 2in	
16	1	41-BV020V56	BALL VALVE - 316SS - 2in - OVAL HANDLE	
17	3	41-BV0H00S6	BALL VALVE - 316SS - 0.5in	
18	3	41-PV100GD0	PLUG VALVE - 10in - GEAR OP NUT	
19	3	42-LW1000D0	CHECK VALVE - LEVER & WEIGHT - 10in	
20	1	42-TF040000	CHECK VALVE - TIDEFLEX - 4in	
21	1	43-AV02LARI	VALVE - AIR VACUUM RELEASE - 2in - ARI - D025L	
22	3	44-AD10RMAL	FLANGE ADAPTER - 10in - ALPHA	
23	2	44-CP040AD0	COUPLING - 4in - ALPHA	
24	3	44-RG100STR	HEAVY DUTY RETAINER GLAND - 10in	
25	1	44-RG120STR	RETAINER GLAND - 12in	
26	3	44-TS100H00	TAPPING SADDLE - 10in PIPE x .5in	
27	1	44-TS120200	TAPPING SADDLE - 12in PIPE x 2in NPT	
28	1	44-TS120H00	TAPPING SADDLE - 12in PIPE x .5in	
29	3	45-FF100100	SPOOL - DI - 10in DIA x 10in - FLGxFLG	
30	2	45-FF120120	SPOOL - DI - 12in DIA x 12in - FLGxFLG	
31	1	45-FP120360	SPOOL - DI - 12in DIA x 36in - FLGxPE	
32	3	46-TE1210DI	TEE - DI - 12in x 10in - FLGxFLG.ipt	
33	1	48-FL120BD0	FLANGE - DI - 12in - BLIND	
34	9	49-GS100000	GASKET - FLANGE - 10in	
35	6	49-GS120000	GASKET - FLANGE - 12in	
36	43.5	51-SE0101SL	JOINT SEALANT - 1in - CONSEAL CS-202	
37	3	59-LS161000	LINK SEAL - 16in CORE x 10in PIPE	
38	1	59-LS161200	LINK SEAL - 16in CORE x 12in PIPE	
39	3	81-PG3H00QB	PRESSURE GAUGE - 3.5in DIA x .25in MNPT BACK - xxx#	
40	3	83-GI0HF0QF	DIAPHRAGM SEAL - 0.5in FNPT x 0.25in FNPT	
41	3	84-BR00PX00	BRACKET - PROXIMITY SWITCH	
42	3	84-PX0000TR	PROXIMITY SWITCH - TURCK	
43	3	84-PX00CCTR	PROXIMITY SWITCH - CONNECTING CABLE - TURCK	



© 2020 ROMTEC INC. ALL RIGHTS RESERVED. THESE PLANS AND DRAWINGS MAY NOT BE REPRODUCED, ADAPTED, OR FURTHER DISTRIBUTED, AND NO COMPONENTS MAY BE CONSTRUCTED FROM THESE PLANS, WITHOUT WRITTEN PERMISSION OF ROMTEC, INC.

ROMTEC UTILITIES
 18240 NORTH BANK ROAD
 ROSEBURG, OREGON 97470
 PHONE: (541) 496-9678
 WWW.ROMTECUTILITIES.COM

PDX TCORE
 PORT OF PORTLAND
 VALVE VAULT ASSEMBLY
 COMPONENT DRAWING

REV	DATE	DESCRIPTION

VERIFY SCALE
 0 1"
 DATE: 2-18-20

