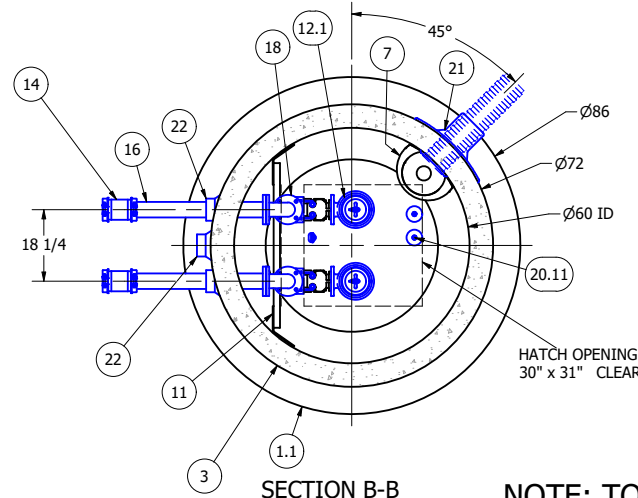
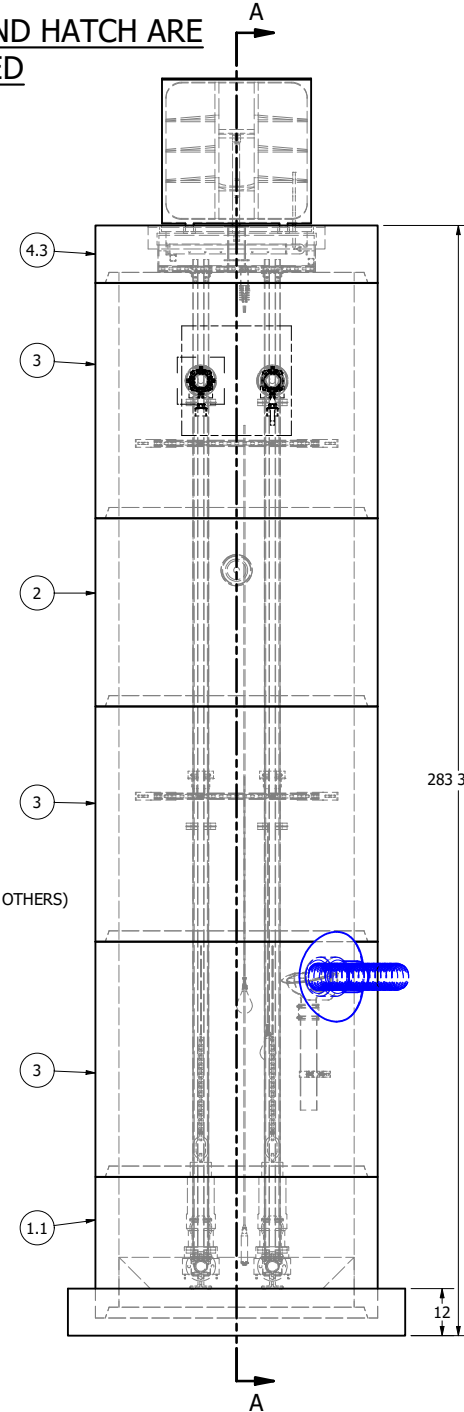
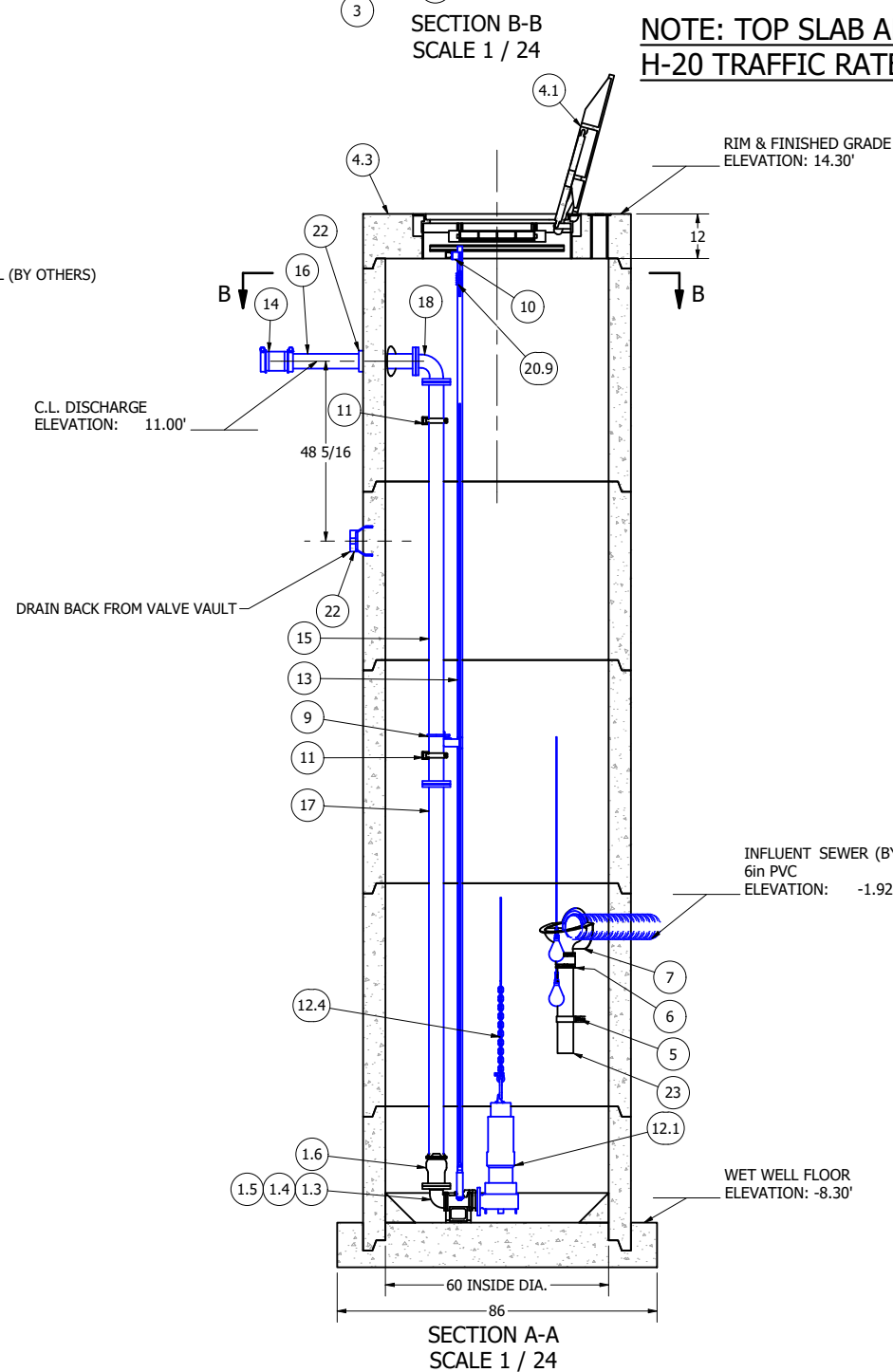


5' DIAMETER WET WELL
 3" DISCHARGE PIPING
 EBARA VORTEX PUMPS
 3" 506 VALVE VAULT

NOTE:
 CONDUIT TO CONTROL PANEL (BY OTHERS)
 MINIMUM:
 (2) FOR POWER
 (1) FOR LEVEL SENSING



NOTE: TOP SLAB AND HATCH ARE
 H-20 TRAFFIC RATED



| PARTS LIST | | | | |
|------------|---------|--------------|--|--|
| ITEM | QTY | STOCK NUMBER | DESCRIPTION | |
| 1 | 1 | 10-CB000000 | BASE SLAB ASSEMBLY | |
| 1.1 | 1 | 10-CB05360W | BASE - WW - 5ft DIA x 36in | |
| 1.2 | 1 | 10-GR050000 | GROUT RING - 5ft DIA | |
| 1.3 | 2 | 31-EL2H03EB | DISCHARGE ELBOW - 2.5in X 3in - EBARA | |
| 1.4 | 2 | 31-HW00AKS6 | ANCHOR KIT - 316SS - DISCHARGE ELBOW | |
| 1.5 | 2 | 31-QD2HLM6B | QDC - 2.5in - LM65 - EBARA | |
| 1.6 | 2 | 44-AD03HYFA | FLANGE ADAPTER - 3in - HYMAX GRIP | |
| 2 | 1 | 12-CR05480W | BARREL - 5ft DIA x 4ft H | |
| 3 | 3 | 12-CR05600W | BARREL - 5ft DIA x 5ft H | |
| 4 | 1 | 14-CT000000 | TOP SLAB ASSEMBLY | |
| 4.1 | 1 | 13-HH3636DG | HATCH - DI - 36in x 36in - SAFETY GRATE | |
| 4.2 | 1 | 13-VT0400CS | VENT - 4in DIA STEEL - TRAFFIC AREAS | |
| 4.3 | 1 | 14-CT05HD0W | TOP SLAB - 5ft DIA - H20 | |
| 4.4 | 3.3 ft | 50-US0000S6 | UNISTRUT - 316SS - SLOTTED | |
| 5 | 1 | 15-BR04SS35 | BRACKET - PIPE - 4in -SS35 - SDR35 | |
| 6 | 1 | 15-CP040000 | COUPLING - FERROCO - 4in | |
| 7 | 1 | 15-DB464045 | DROP BOWL - 4in thru 6in INLET x 4in OUTLET - 4ft - 5ft WET WELL | |
| 8 | 2 | 17-AC38000B | BOLT KIT - UPPER GUIDE BAR BRACKET | |
| 9 | 2 | 17-IG01S4EB | BRACKET - 304SS - INTERMEDIATE GUIDE BAR - 1in | |
| 10 | 2 | 17-UG01S4EB | BRACKET - 304SS - UPPER GUIDE BAR - 1in | |
| 11 | 2 | 18-BR000000 | BRACKET ASSEMBLY - 316SS - DISCHARGE SUPPORT | |
| 12 | 1 | 30-PU000000 | PUMP SHIPPING CRATE | |
| 12.1 | 2 | 30-PU0000EB | PUMP - EBARA 80DVFU61.5 - 2HP | |
| 12.2 | 2 | 30-PUCABL02 | PUMP OPTION: LONG CABLES - 75ft - 2HP | |
| 12.3 | 2 | 30-PUTRIM00 | PUMP OPTION: IMPELLER TRIM - .5HP THRU 5HP | |
| 12.4 | 2 | 32-AC0000EB | LIFTING ASSEMBLY - EBARA - 24ft CHAIN | |
| 12.5 | 2 | 32-CGS0000D | CABLE SUPPORT GRIP - 304SS - 0.75in-0.99in | |
| 12.6 | 1 | 32-PLGE0000 | GRIP EYE UNIT | |
| 13 | 84.0 ft | 40-PP0100S4 | PIPE - 304SS SCH40 - 1in DIA (4 @ 10ft & 4 @ 11ft) | |
| 14 | 2 | 44-CP030HD0 | COUPLING - 3in - HYMAX GRIP | |
| 15 | 2 | 45-FF031080 | SPOOL - DI - 3in DIA x 108in - FLGxFLG | |
| 16 | 2 | 45-FP030360 | SPOOL - DI - 3in DIA x 36in - FLGxPE | |
| 17 | 2 | 45-FP031080 | SPOOL - DI - 3in DIA x 108in - FLGxPE | |
| 18 | 2 | 46-EL0390DI | ELBOW - DI - 3in x 90deg - FLGxFLG | |
| 19 | 6 | 49-GS030000 | GASKET - FLANGE - 3in | |
| 20 | 1 | 50-AC000000 | WELL SHIPPING CRATE | |
| 20.1 | 1 | 13-KY000000 | HATCH KEY | |
| 20.2 | 4 | 18-AC00CH00 | CABLE HANGER ASSEMBLY - 316SS | |
| 20.3 | 4 | 18-HD040000 | LIFTING CLUTCH - 4 TON | |
| 20.4 | 1 | 51-AC00NSTB | NEVER SIEZE - TUBE | |
| 20.5 | 95 ft | 51-JWCS2120 | JOINT WRAP - 12in - CONSEAL CS-212 | |
| 20.6 | 1 | 51-SECS1800 | SEALANT - BUCKET - CONSEAL CS-1800 | |
| 20.7 | 5 | 51-SECS1900 | SEALANT - TUBE - CONSEAL CS-1900 | |
| 20.8 | 95ft | 51-SECS231S | SEALANT - 1in x .75in - CONSEAL CS-231 | |
| 20.9 | 1 | 62-CG00PT00 | CORD GRIP - PRESSURE TRANSDUCER - WEDGE CLAMP | |
| 20.10 | 1 | 80-FI00PT00 | DESSICANT FILTER - PRESSURE TRANSDUCER | |
| 20.11 | 2 | 80-FS20MSNL | FLOAT - 20m - MS1 - NOLTA | |
| 20.12 | 1 | 80-PT1500EH | PRESSURE TRANSDUCER - 0-15PSI - 60ft CABLE - E&H | |
| 21 | 1 | 51-SECS1800 | SEALANT - BUCKET - CONSEAL CS-1800 | |
| 22 | 3 | 59-KB080400 | KOR-N-SEAL - 8in CORE - 4in thru 1.5in PIPE | |
| 23 | 2.0 ft | 70-PP0400DR | PIPE - PVC SDR35 - 4in DIA | |
| 24 | 1 | 99-99999999 | EPOXY GROUT - FIELD APPLIED | |

FOR PRODUCTION

COLOR LEGEND
 ■ MAJOR CONCRETE COMPONENTS WITH PRE-INSTALLED COMPONENTS.
 ■ COMPONENTS PRE-ASSEMBLED TO THE EXTENT POSSIBLE AND WILL NEED TO BE FIELD INSTALLED.

NOTE: PRE-ASSEMBLY IS DONE AT ROMTEC UTILITIES' DISCRETION AND MAY CHANGE AT THE TIME OF PRODUCTION.

NOTE: ALL DIMENSIONS AND ELEVATIONS SHOWN ARE NOMINAL DIMENSIONS. IT IS THE RESPONSIBILITY OF THE ON-SITE CONTRACTOR OR ROMTEC UTILITIES CUSTOMER (NOT ROMTEC UTILITIES) TO VERIFY THE ACCURACY OF ANY CRITICAL DIMENSIONS OR ELEVATIONS PRIOR TO SETTING OR INSTALLING ANY EQUIPMENT.

ALL MATERIALS SHOWN ON THIS SHEET WILL BE SUPPLIED BY ROMTEC UTILITIES AND DELIVERED TO THE SITE AFTER THE HOLE HAS BEEN EXCAVATED AND SHORED. THE CONTRACTOR SHALL SUPPLY A CRANE OF SUFFICIENT SIZE TO LOWER ALL THE CONCRETE PIECES INTO THE HOLE SAFELY. THE CONTRACTOR SHALL INSTALL THE WET WELL (AND VALVE VAULT AND METERING VAULT IF APPLICABLE). ROMTEC UTILITIES WILL PROVIDE A REPRESENTATIVE FOR TECHNICAL ASSISTANCE ON THE DAY OF INSTALLATION TO ANSWER ANY QUESTIONS THAT MAY ARISE. THE CONTRACTOR IS RESPONSIBLE FOR ALL PLUMBING AND ELECTRICAL CONNECTIONS AND INSTALLATION. ITEMS NOTED AS "BY OTHERS" WILL BE PROVIDED AND INSTALLED BY THE CONTRACTOR. ROMTEC UTILITIES WILL NOT INSTALL ANY OF THE COMPONENTS SHOWN ON THIS PAGE.



© 2020 ROMTEC INC. ALL RIGHTS RESERVED. THESE PLANS AND DRAWINGS MAY NOT BE REPRODUCED, ADAPTED, OR FURTHER DISTRIBUTED, AND NO COMPONENTS MAY BE CONSTRUCTED FROM THESE PLANS, WITHOUT WRITTEN PERMISSION OF ROMTEC, INC.

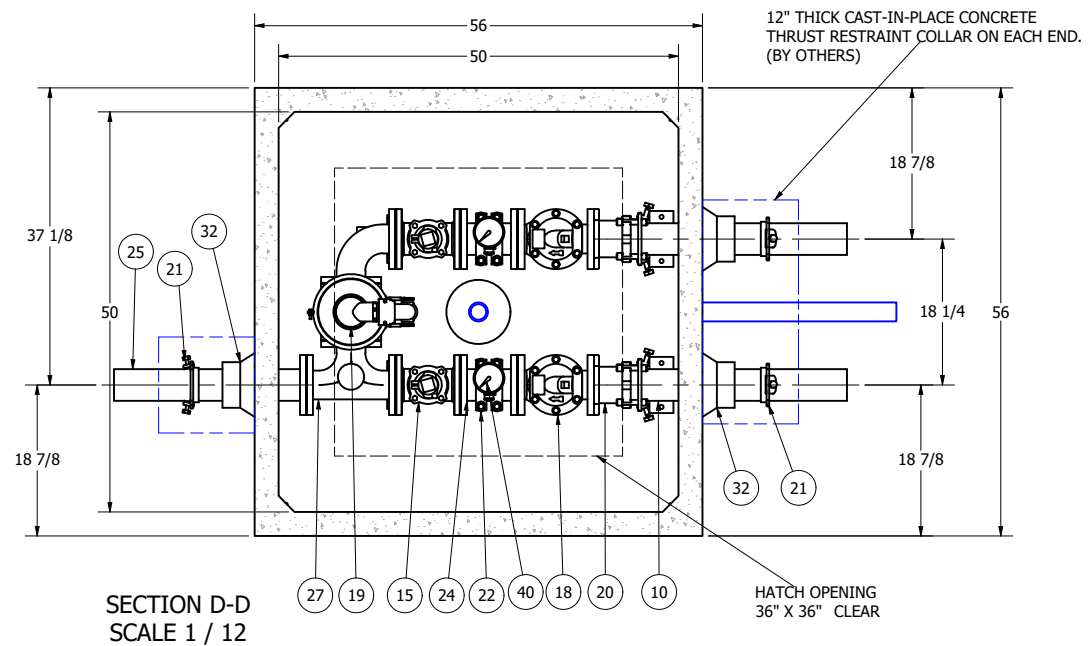
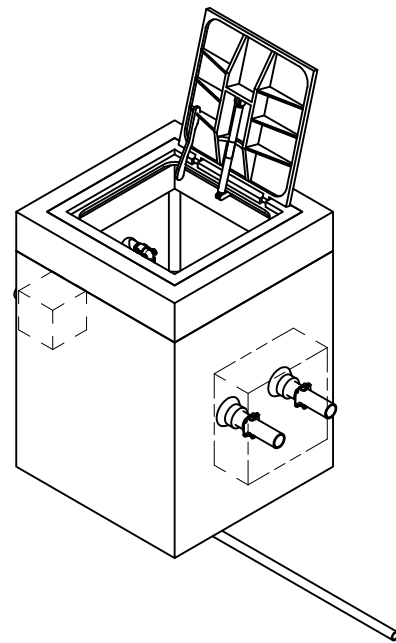
PROLOGIS LOT F WASTEWATER
 PORTLAND, OR
 WET WELL ASSEMBLY

MECHANICAL SHEET
 1 OF 3

VERIFY SCALE
 DRAWING DATE: 12-8-20
 DATE: 1-29-21
 REV: 1
 DATE: 1-29-21
 DESCRIPTION: PRODUCTION LAUNCH
 REVISION HISTORY

DATE: 12-8-20

ROMTEC UTILITIES
 18240 NORTH BANK ROAD
 ROSEBURG, OREGON 97470
 PHONE: (541) 496-9678
 WWW.ROMTECUTILITIES.COM

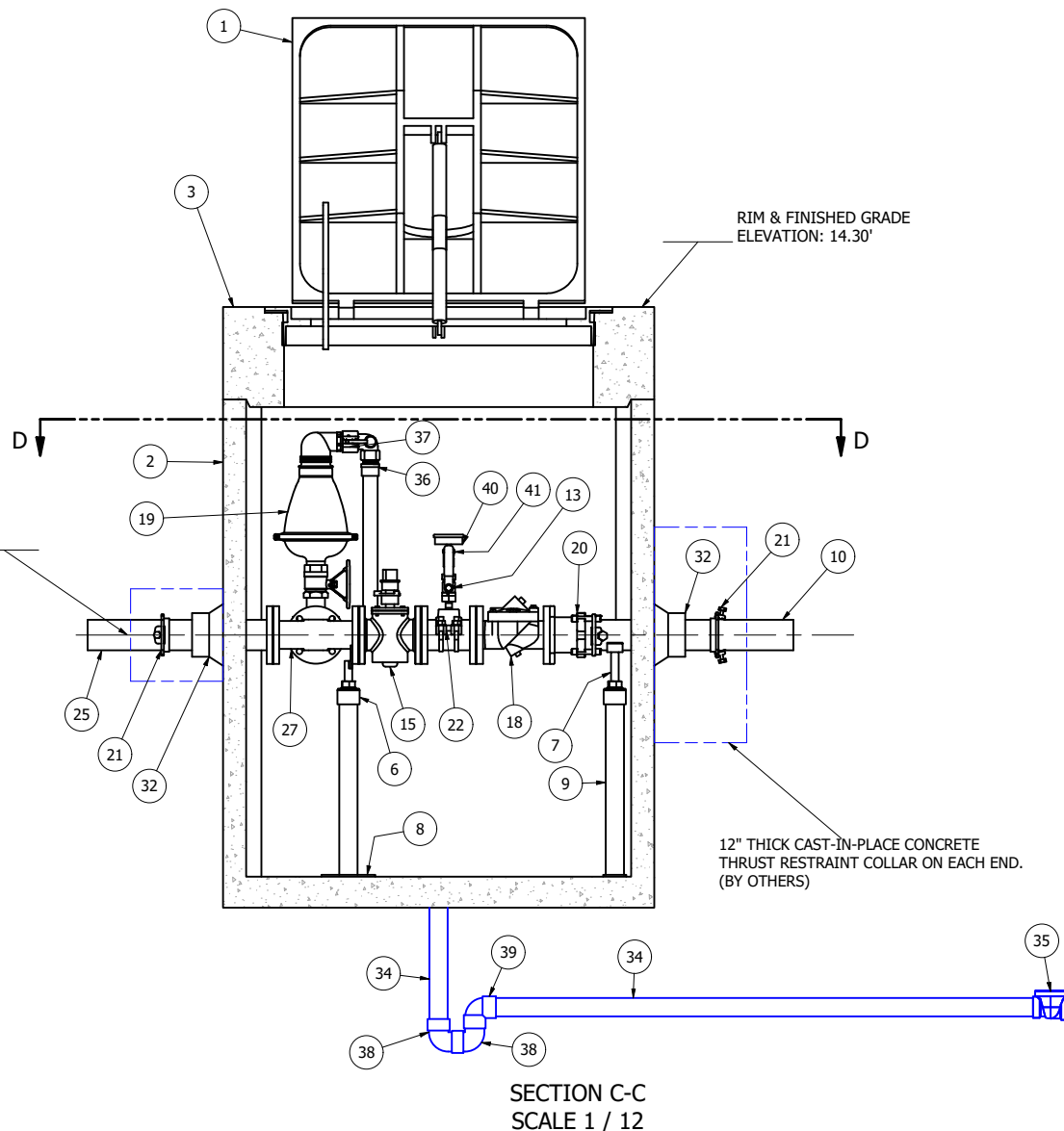


NOTE: TOP SLAB AND HATCH ARE H-20 TRAFFIC RATED

**506 VALVE VAULT
3" PIPING AND VALVES
PRESSURE GAUGES & ARV**

FORCE MAIN (BY OTHERS)
SIZE: 3"
TYPE: PVC SCH 40

C.L. DISCHARGE
ELEVATION: 11.00'



| PARTS LIST | | | |
|------------|--------|--------------|--|
| ITEM | QTY | STOCK NUMBER | DESCRIPTION |
| 1 | 1 | 13-HH3636D0 | HATCH - DI - 36in x 36in |
| 2 | 1 | 20-CB506000 | BASE - VV - 506LA |
| 3 | 1 | 24-CT506HD0 | TOP SLAB - VV - 506 - H20 |
| 4 | 2 | 25-KY0000BR | BRACKET - VALVE KEY |
| 5 | 1 | 25-KY0600GW | VALVE KEY - 6ft - GATE WRENCH |
| 6 | 2 | 25-PS030FLG | PIPE STAND - 316SS - 3in FLANGE |
| 7 | 2 | 25-PS030SAD | PIPE STAND - 316SS - 3in SADDLE |
| 8 | 4 | 25-PSBASES4 | PIPE STAND - 304SS - BASE PLATE |
| 9 | 8.0 ft | 40-PP0200S4 | PIPE - 304SS SCH40 - 2in DIA |
| 10 | 5.0 ft | 40-PP0300D0 | PIPE - DI - 3in DIA |
| 11 | 4 | 40-TT0H02S4 | NIPPLE - 304SS - 0.5in DIA x 2in |
| 12 | 1 | 40-TT0203S4 | NIPPLE - 304SS - 2in DIA x 3in |
| 13 | 2 | 41-BV0H00S6 | BALL VALVE - 316SS - 0.5in |
| 14 | 1 | 41-BV020VS6 | BALL VALVE - 316SS - 2in - OVAL HANDLE |
| 15 | 2 | 41-PV0300D0 | PLUG VALVE - 3in - DIRECT OP NUT |
| 16 | 1 | 42-AC0300BF | BACKFLOW ACTUATOR - 3in |
| 17 | 2 | 42-MI034600 | MECHANICAL INDICATOR - 3in THRU 6in |
| 18 | 2 | 42-SF0300D0 | CHECK VALVE - SWING FLEX - 3in |
| 19 | 1 | 43-AV020ARI | VALVE - AIR VACUUM RELEASE - 2in - ARI |
| 20 | 2 | 44-AD03STD0 | RFCA - 3in - FBEC w/ SS BOLTS |
| 21 | 3 | 44-RG030STR | RETAINER GLAND - 3in - HEAVY DUTY |
| 22 | 2 | 44-TS030H00 | TAPPING SADDLE - 3in x .5in NPT |
| 23 | 1 | 44-TS030200 | TAPPING SADDLE - 3in x 2in NPT |
| 24 | 3 | 45-FF030070 | SPOOL - DI - 3in DIA x 7in - FLGXFLG |
| 25 | 1 | 45-FP030240 | SPOOL - DI - 3in DIA x 24in - FLGXPE |
| 26 | 1 | 46-EL0390DI | ELBOW - DI - 3in x 90deg - FLGXFLG |
| 27 | 1 | 46-TE0303DI | TEE - DI - 3in FLGXFLG |
| 28 | 9 | 49-GS030000 | GASKET - FLANGE - 3in |
| 29 | 19 ft | 51-JWCS2120 | JOINT WRAP - 12in - CONSEAL CS-212 |
| 30 | 19 ft | 51-SE303QSL | SEALANT - 0.75in - CONSEAL CS-202 |
| 31 | 1 | 51-SECS1800 | SEALANT - BUCKET - CONSEAL CS-1800 |
| 32 | 3 | 59-KB080400 | KOR-N-SEAL - 8in CORE - 4in thru 1.5in PIPE |
| 33 | 2.0 ft | 70-PP1H00P4 | PIPE - PVC SCH40 - 1.5in DIA |
| 34 | 7.5 ft | 70-PP0200P8 | PIPE - PVC SCH80 - 2in DIA |
| 35 | 1 | 72-DB020SP8 | DRAINBACK VALVE - PVC - 2in |
| 36 | 1 | 74-AD1H004M | ADAPTER - PVC SCH40 - 1.5in - SLIP x MNPT |
| 37 | 1 | 74-CL1H90SF | CAM LOCK - 90DEG - 1.5in SOCKET X 1.5in FNPT |
| 38 | 2 | 76-EL02908S | ELBOW - PVC SCH80 - 2in x 90deg - SLIPxSPIG |
| 39 | 1 | 76-EL029080 | ELBOW - PVC SCH80 - 2in x 90deg - SLIP |
| 40 | 2 | 81-PG3H00QB | PRESSURE GAUGE - 3.5in DIA x .25in MNPT BACK - 30# |
| 41 | 2 | 83-GI0HF0QF | DIAPHRAGM SEAL - 0.5in FNPT x 0.25in FNPT |

VERIFY SCALE
PRODUCTION LAUNCH
DESCRIPTION
REVISION HISTORY

| | | |
|---|---------|------|
| 1 | 1-29-21 | DATE |
| 1 | 12-8-20 | DATE |

DSN: AD
DRN: AD
CKD: AD

ROMTEC UTILITIES
18240 NORTH BANK ROAD
ROSEBURG, OREGON 97470
PHONE: (541) 496-9678
WWW.ROMTECUTILITIES.COM

PROLOGIS LOT F WASTEWATER
PORTLAND, OR
VALVE VAULT ASSEMBLY
MECHANICAL SHEET
2 OF 3

ALL MATERIALS SHOWN ON THIS SHEET WILL BE SUPPLIED BY ROMTEC UTILITIES AND DELIVERED TO THE SITE AFTER THE HOLE HAS BEEN EXCAVATED AND SHORED. THE CONTRACTOR SHALL SUPPLY A CRANE OF SUFFICIENT SIZE TO LOWER ALL THE CONCRETE PIECES INTO THE HOLE SAFELY. THE CONTRACTOR SHALL INSTALL THE WET WELL (AND VALVE VAULT AND METERING VAULT IF APPLICABLE). ROMTEC UTILITIES WILL PROVIDE A REPRESENTATIVE FOR TECHNICAL ASSISTANCE ON THE DAY OF INSTALLATION TO ANSWER ANY QUESTIONS THAT MAY ARISE. THE CONTRACTOR IS RESPONSIBLE FOR ALL PLUMBING AND ELECTRICAL CONNECTIONS AND INSTALLATION. ITEMS NOTED AS "BY OTHERS" WILL BE PROVIDED AND INSTALLED BY THE CONTRACTOR. ROMTEC UTILITIES WILL NOT INSTALL ANY OF THE COMPONENTS SHOWN ON THIS PAGE.



© 2020 ROMTEC INC. ALL RIGHTS RESERVED. THESE PLANS AND DRAWINGS MAY NOT BE REPRODUCED, ADAPTED, OR FURTHER DISTRIBUTED, AND NO COMPONENTS MAY BE CONSTRUCTED FROM THESE PLANS, WITHOUT WRITTEN PERMISSION OF ROMTEC, INC.

FOR PRODUCTION

COLOR LEGEND

- MAJOR CONCRETE COMPONENTS WITH PRE-INSTALLED COMPONENTS.
- COMPONENTS PRE-ASSEMBLED TO THE EXTENT POSSIBLE AND WILL NEED TO BE FIELD INSTALLED.

NOTE: PRE-ASSEMBLY IS DONE AT ROMTEC UTILITIES' DISCRETION AND MAY CHANGE AT THE TIME OF PRODUCTION.

NOTE: ALL DIMENSIONS AND ELEVATIONS SHOWN ARE NOMINAL DIMENSIONS. IT IS THE RESPONSIBILITY OF THE ON-SITE CONTRACTOR OR ROMTEC UTILITIES CUSTOMER (NOT ROMTEC UTILITIES) TO VERIFY THE ACCURACY OF ANY CRITICAL DIMENSIONS OR ELEVATIONS PRIOR TO SETTING OR INSTALLING ANY EQUIPMENT.

2.03 ELECTRICAL PLANS

GENERAL INFORMATION

- ELECTRICAL SERVICE - 480V, 3 PHASE
- PUMPS - (2) 2HP, 460V, 3PH, 3.3 FLA, DUPLEX CONFIGURATION
- PUMP MODEL - EBARA, 80DVFM61.54
- PRIMARY CONTROLLER - MICROLOGIXS 1400 PLC CONFIGURED FOR DUPLEX OPERATION
- DEVICE MOUNTING - INNER DOOR
- PANEL MOUNTING - FLOOR MOUNT

LEVEL SENSING

- PRIMARY LEVEL SENSING - PRESSURE TRANSDUCER WIRED FOR INTRINSICALLY SAFE
- MODEL - E&H FMX21
- SECONDARY LEVEL SENSING - (4) FLOATS WIRED FOR INTRINSICALLY SAFE
- MODEL - NOLTA MS1

PUMP CONFIGURATION

- MANUFACTURER - EBARA
- MODEL - 80DVFM61.54
- HP - 2
- NP FLA - 3.3
- DUPLEX
- CABLE DIA. - 0.58

CONTROL PANEL

- NEMA 3R STAINLESS STEEL, 60"H X 36"W X 16"D, 3 POINT LOCKING LATCH
- 12" LEG KIT
- MAIN DISCONNECT CIRCUIT BREAKER W/LOCKOUT PROVISIONS
- PHASE MONITOR RELAY
- TRANSIENT VOLTAGE SURE PROTECTION
- HOA SELECTOR SWITCHES
- RUN & FAULT INDICATOR LIGHTS
- ELAPSED TIME METERS
- FVNR STARTERS
- INNER DOOR MOUNTED DEVICES
- UL LISTED

CONTROL OPTIONS

- ALARM BEACON
- COLOR HMI

COMMUNICATIONS - SEE PAGE 3

- SENSAPHONE SENTINEL PRO
- CELLULAR SERVICE CONTRACT REQUIRED
- ----
- ----

GENERATOR

- MODEL - C250 D6
- 250 KW
- VOLTAGE - 480V, 3PH
- FUEL - DIESEL
- ENCLOSURE - SOUND ATTENUATED II

AUTOMATIC TRANSFER SWITCH

- MODEL - OTEC 225A
- VOLTAGE - 480V, 3PH
- ENCLOSURE - NEMA 3R

ELECTRICAL INSTALLATION RECOMMENDATIONS

THE FOLLOWING INFORMATION IS A RECOMMENDATION ONLY. IT IS THE RESPONSIBILITY OF THE INSTALLING CONTRACTOR TO REVIEW ALL AS BUILT SYSTEM INFORMATION AND MAKE THE INSTALLATION AS PER THE NATIONAL ELECTRICAL CODE (NEC).

INSTALL ALL BRANCH CIRCUIT AND/OR FEEDER OVERCURRENT PROTECTION DEVICES IN ACCORDANCE WITH THE NEC.

TABLE 1

| DUPLEX LIFT STATION CONTROL PANEL (LCP) | | | |
|---|-------|-------------|-------|
| VOLTS | 480 | LARGEST HP | 2 |
| PHASE | 3 | LARGEST FLA | 3.3 |
| FREQUENCY | 60 HZ | CPT VA | 1500 |
| | | TOTAL FLA | 10.55 |

NOTE: LARGEST FLA BASED OFF OF TABLE 430.250 PER NEC ARTICLE 430.6(A)(1).

TABLE 2

| RECOMMENDED CONDUIT SIZES | | | | |
|---------------------------|----|------------|--------------|--------------|
| DEVICE | HP | POWER DIA. | CONTROL DIA. | CONDUIT SIZE |
| PUMP 1 | 2 | 0.58 | .49 | 1.5" |
| PUMP 2 | 2 | 0.58 | .49 | 1.5" |
| TRANSDUCER | | | .35 | 1" |
| FLOATS | | | .25 | |

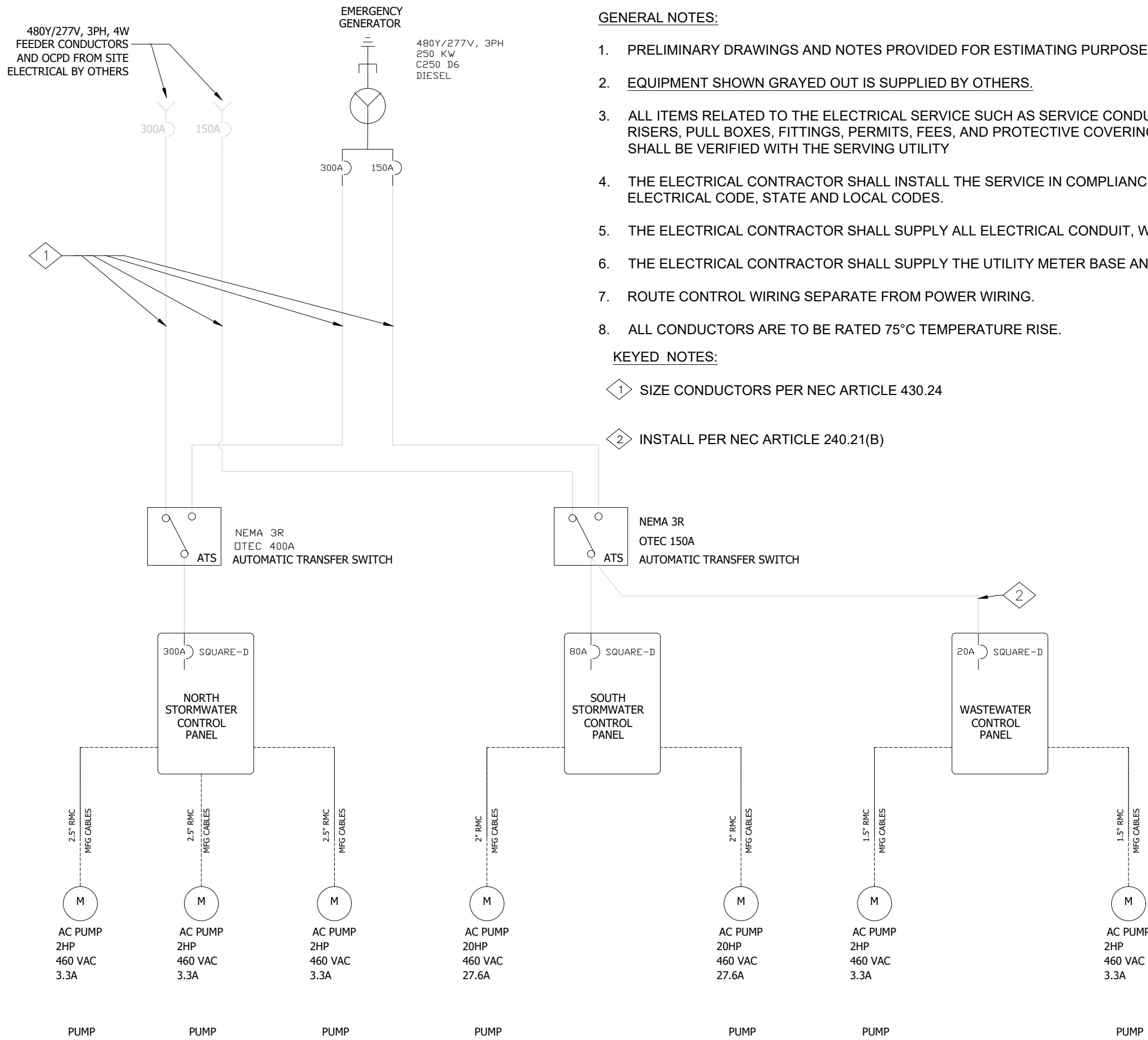
NOTE: ALL CONDUIT CALCULATION BASED ON RIGID METAL CONDUIT (RMC) @ 40% MAXIMUM FILL AS PER THE 2017 NATIONAL ELECTRICAL CODE.

SIZE ALL CONDUIT IN ACCORDANCE WITH THE NEC, OR AS RECOMMENDED, WHICHEVER IS GREATER.

SPECIAL NOTE:

THE ABOVE INFORMATION IS A PRELIMINARY INFORMATION ONLY. IT IS THE INSTALLING CONTRACTOR'S RESPONSIBILITY TO REFERENCE THE ELECTRICAL INSTALLATION DOCUMENTATION TO VERIFY ALL INFORMATION AND TO CONFIRM THAT THE INSTALLATION MEETS THE REQUIREMENTS OF THE NATIONAL ELECTRICAL CODE AND ANY LOCAL CODE REQUIREMENTS.

| | |
|--|------------------|
| PROJECT #: E0106D10 DSN: DSN DRN: DRN CKD: CKD | DATE: 12/11/20 |
| | REVISION HISTORY |
| © 2018 ROMTEC UTILITIES, INC. ALL RIGHTS RESERVED. THESE PLANS AND DRAWINGS MAY NOT BE REPRODUCED, COPIED, DISTRIBUTED, OR FURTHER REPRODUCED, AND NO LIABILITY SHALL BE ASSUMED FOR CONSTRUCTION FROM THESE PLANS, WITHOUT WRITTEN PERMISSION OF ROMTEC UTILITIES, INC. | |
|  18240 NORTH BANK ROAD ROSEBURG, OREGON 97470 PHONE: (541) 496-9678 WWW.ROMTECUTILITIES.COM | |
| PROLOGIS MEADOWS LOT F - WASTEWATER PORTLAND, OR ELECTRICAL NOTES DUPLEXLIFT STATION | |
| ELECTRICAL SHEET 1 OF 3 | |



GENERAL NOTES:

1. PRELIMINARY DRAWINGS AND NOTES PROVIDED FOR ESTIMATING PURPOSES ONLY. NOT FOR CONSTRUCTION.
2. EQUIPMENT SHOWN GRAYED OUT IS SUPPLIED BY OTHERS.
3. ALL ITEMS RELATED TO THE ELECTRICAL SERVICE SUCH AS SERVICE CONDUIT, CONDUCTORS, DUCT, PAD MOUNT, RISERS, PULL BOXES, FITTINGS, PERMITS, FEES, AND PROTECTIVE COVERING FROM THE SERVICE POINT LOCATION SHALL BE VERIFIED WITH THE SERVING UTILITY
4. THE ELECTRICAL CONTRACTOR SHALL INSTALL THE SERVICE IN COMPLIANCE WITH THE SERVING UTILITY, NATIONAL ELECTRICAL CODE, STATE AND LOCAL CODES.
5. THE ELECTRICAL CONTRACTOR SHALL SUPPLY ALL ELECTRICAL CONDUIT, WIRE, FASTENERS AND FITTINGS.
6. THE ELECTRICAL CONTRACTOR SHALL SUPPLY THE UTILITY METER BASE AND METHOD OF MAIN SERVICE DISCONNECT.
7. ROUTE CONTROL WIRING SEPARATE FROM POWER WIRING.
8. ALL CONDUCTORS ARE TO BE RATED 75°C TEMPERATURE RISE.

KEYED NOTES:

- 1 SIZE CONDUCTORS PER NEC ARTICLE 430.24
- 2 INSTALL PER NEC ARTICLE 240.21(B)

PROLOGIS MEADOWS LOT F - WASTEWATER PORTLAND, OR ELECTRICAL NOTES DUPLEXLIFT STATION

ROMTEC UTILITIES
18240 NORTH BANK ROAD
ROSEBURG, OREGON 97470
PHONE: (503) 496-9678
WWW.ROMTECUTILITIES.COM

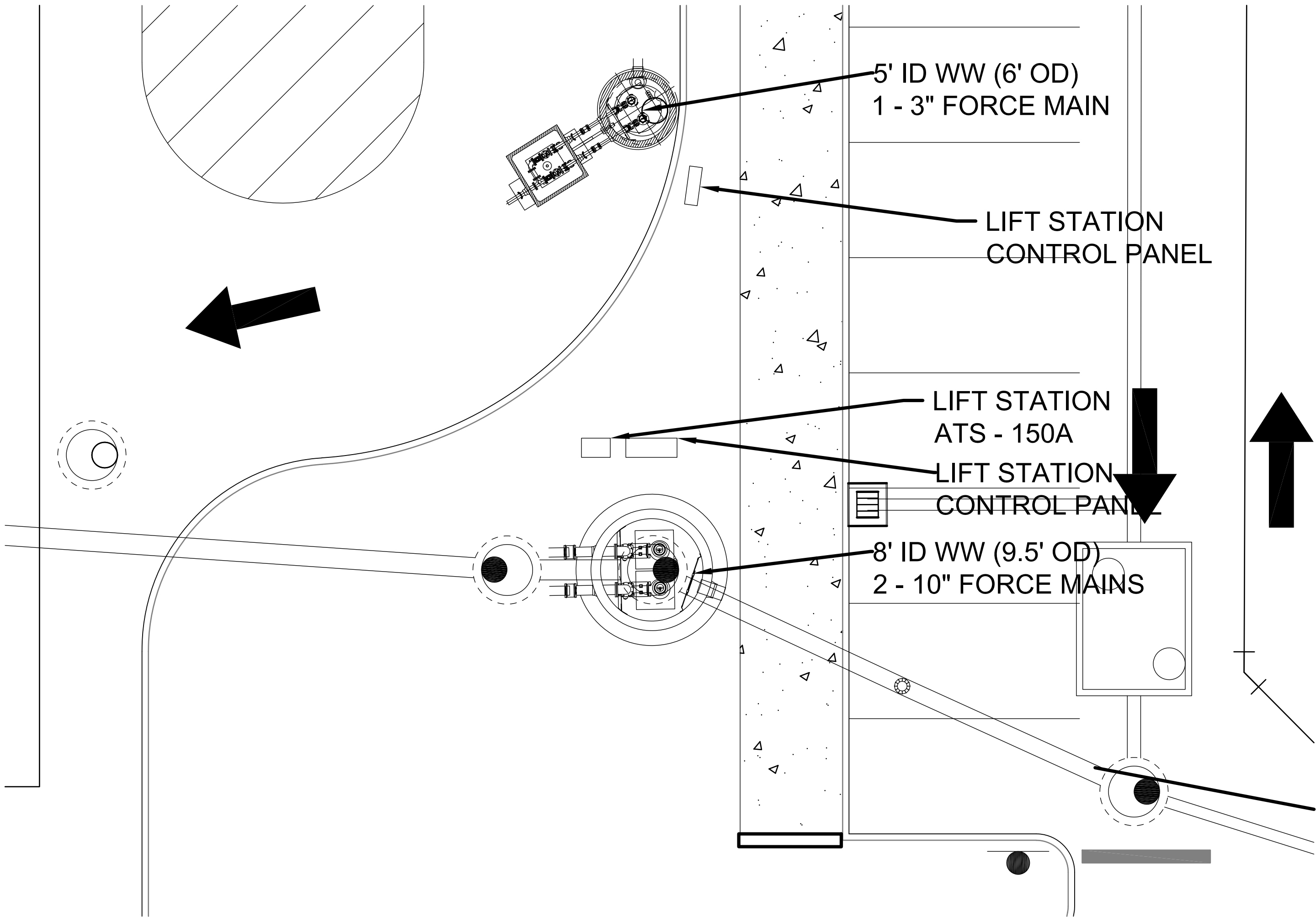
PROJECT #: EO106010
DSN: DSN
DRN: DRN
CKD: CKD
DATE: 12/11/20

REVISION HISTORY

| REV | DATE | DESCRIPTION |
|-----|------|-------------|
| | | |
| | | |
| | | |

ELECTRICAL SHEET
2 OF 3

2.01 SITE LAYOUT



5' ID WW (6' OD)
1 - 3" FORCE MAIN

LIFT STATION
CONTROL PANEL

LIFT STATION
ATS - 150A

LIFT STATION
CONTROL PANEL

8' ID WW (9.5' OD)
2 - 10" FORCE MAINS