

ISO VIEW
SCALE 1 / 30

6' DIAMETER WET WELL
4" DISCHARGE PIPING
DUPLIX EBARA PUMPS
4" 5106 VAULT

FOR PRODUCTION

NOTE:
CONDUIT TO CONTROL PANEL (BY OTHERS)
MINIMUM:
(2) FOR POWER
(1) FOR LEVEL SENSING

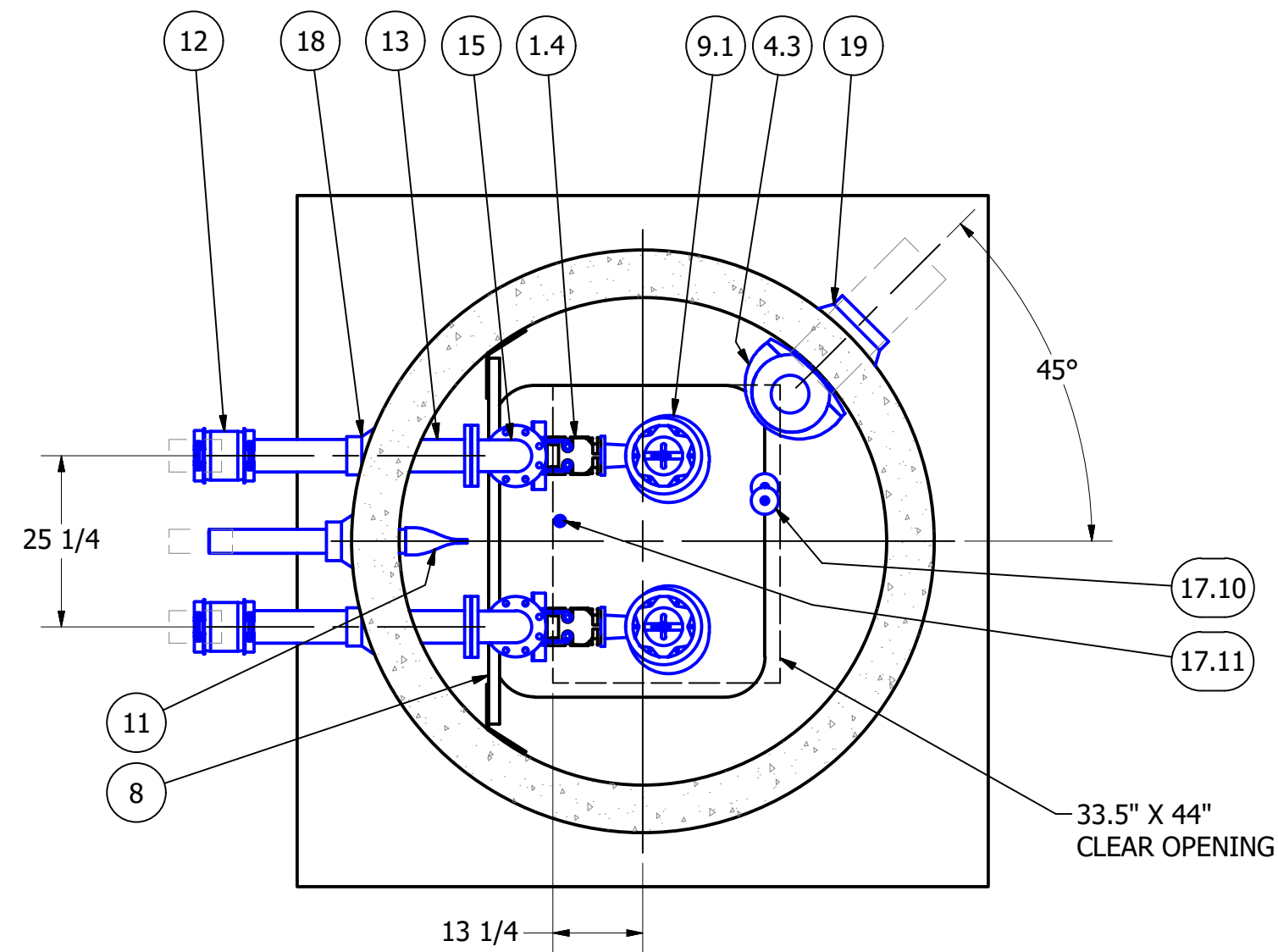
COLOR LEGEND

	MAJOR CONCRETE COMPONENTS WITH PRE-INSTALLED COMPONENTS.
	COMPONENTS PRE-ASSEMBLED TO THE EXTENT POSSIBLE AND WILL NEED TO BE FIELD INSTALLED.

NOTE: PRE-ASSEMBLY IS DONE AT ROMTEC UTILITIES' DISCRETION AND MAY CHANGE AT THE TIME OF PRODUCTION.

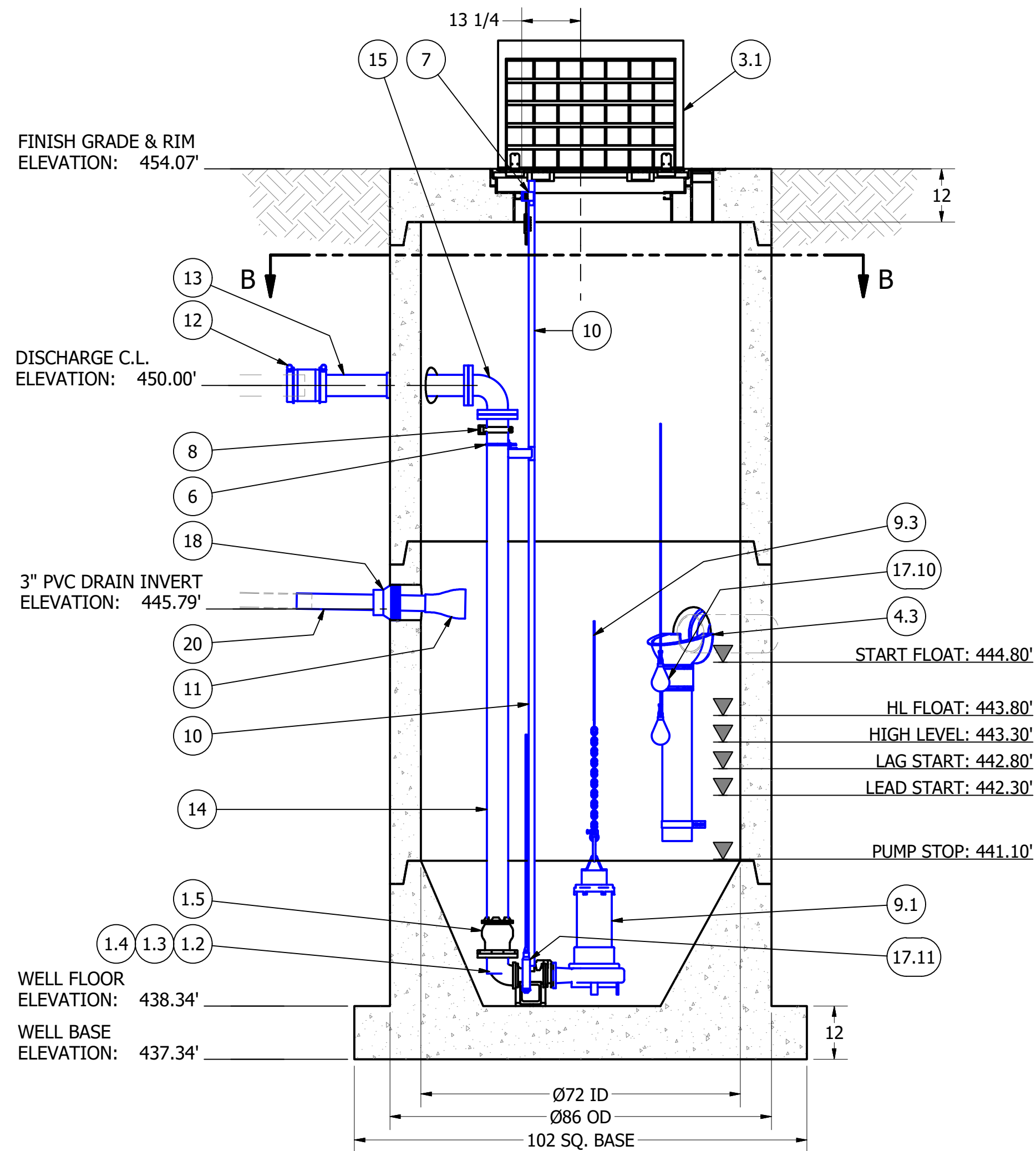
ALL MATERIALS SHOWN ON THIS SHEET WILL BE SUPPLIED BY ROMTEC UTILITIES AND DELIVERED TO THE SITE AFTER THE HOLE HAS BEEN EXCAVATED AND SHORED. THE CONTRACTOR SHALL SUPPLY A CRANE OF SUFFICIENT SIZE TO LOWER ALL THE CONCRETE PIECES INTO THE HOLE SAFELY. THE CONTRACTOR SHALL INSTALL THE WET WELL (AND VALVE VAULT AND METERING VAULT IF APPLICABLE). ROMTEC UTILITIES WILL PROVIDE A REPRESENTATIVE FOR TECHNICAL ASSISTANCE ON THE DAY OF INSTALLATION TO ANSWER ANY QUESTIONS THAT MAY ARISE. THE CONTRACTOR IS RESPONSIBLE FOR ALL PLUMBING AND ELECTRICAL CONNECTIONS AND INSTALLATION. ITEMS NOTED AS "BY OTHERS" WILL BE PROVIDED AND INSTALLED BY THE CONTRACTOR. ROMTEC UTILITIES WILL NOT INSTALL ANY OF THE COMPONENTS SHOWN ON THIS PAGE.

© 2019 ROMTEC INC. ALL RIGHTS RESERVED. THESE PLANS AND DRAWINGS MAY NOT BE REPRODUCED, ADAPTED, OR FURTHER DISTRIBUTED, AND NO COMPONENTS MAY BE CONSTRUCTED FROM THESE PLANS, WITHOUT WRITTEN PERMISSION OF ROMTEC, INC.

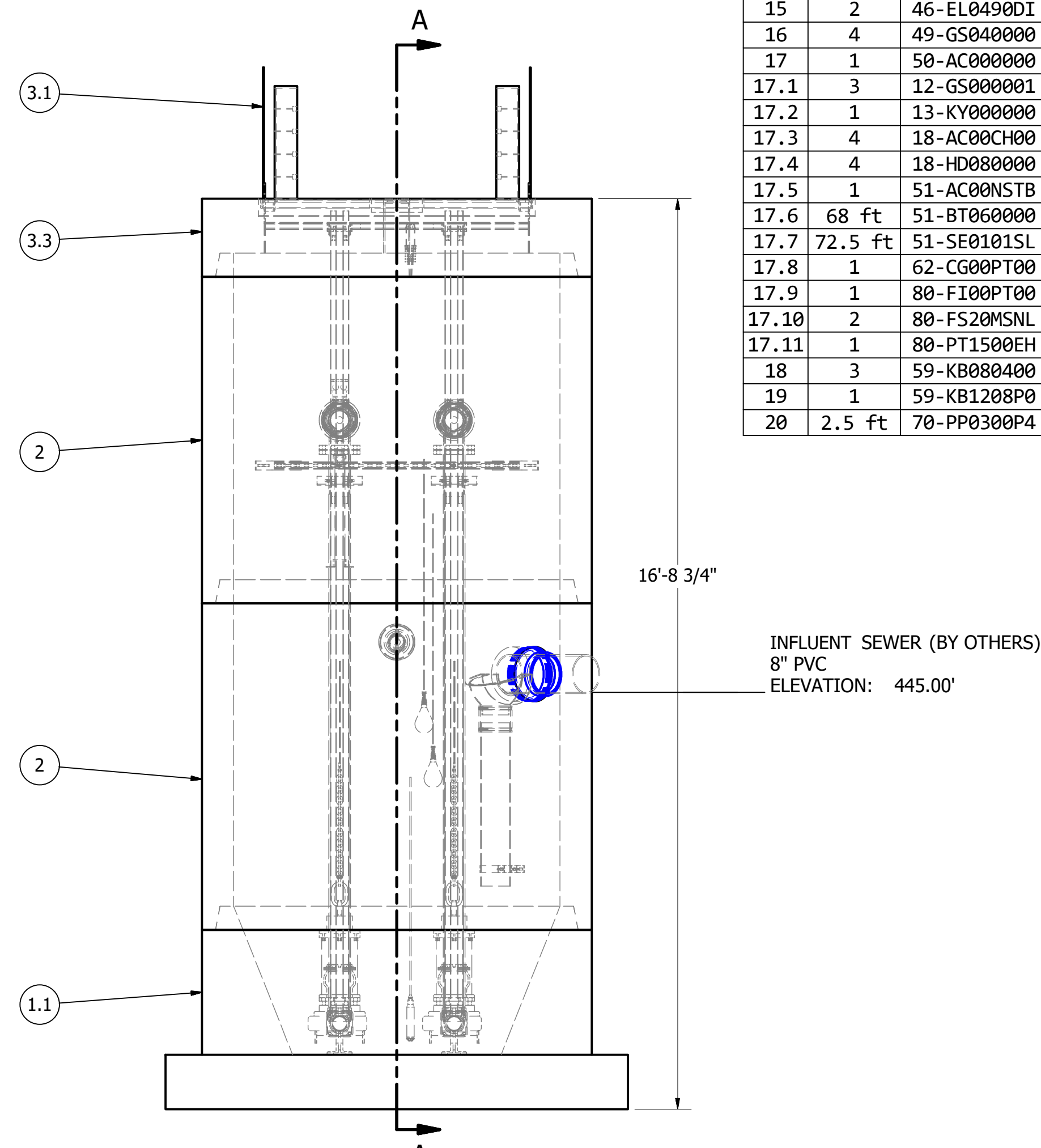


SECTION B-B
SCALE 1 / 24

NOTE: TOP SLAB AND HATCH ARE H-20 OCCASIONAL TRAFFIC RATED



SECTION A-A
SCALE 1 / 24



FRONT VIEW
SCALE 1 / 24

PRIMARY SENSOR ELEVATION TABLE

DESCRIPTION	ELEVATION	Δ
INFLUENT INVERT	445.00'	1.70'
HIGH LEVEL ALARM	443.30'	0.50'
LAG PUMP START	442.80'	0.50'
LEAD PUMP START	442.30'	1.20'
PUMP STOP	441.10'	2.76'
WELL FLOOR	438.34'	

MISC. ELEVATION TABLE

DESCRIPTION	ELEVATION
PUMP START (FLOAT)	444.80'
HIGH LEVEL (FLOAT)	443.80'

PARTS LIST

ITEM	QTY	STOCK NUMBER	DESCRIPTION
1	1	10-CB000000	BASE SLAB ASSEMBLY
1.1	1	10-CB068HSQ	BASE - WW - 6ft DIA - RU DESIGN - SQUARE
1.2	2	31-EL0304EB	DISCHARGE ELBOW - 3in x 4in - EBARA
1.3	2	31-HW00AKS6	ANCHOR KIT - 316SS - DISCHARGE ELBOW
1.4	2	31-QD03LMEB	QUICK DISCHARGE CONNECTOR - 3in - EBARA LM80
1.5	2	44-AD04RMAL	FLANGE ADAPTER - 4in - ALPHA
2	2	12-CR067200	BARREL - 6ft DIA x 6ft H
3	1	14-CT000000	TOP SLAB ASSEMBLY
3.1	1	13-HH06HD0E	HATCH - H20 - 6ft - 33.5in x 44in
3.2	1	13-VT0000AL	VENT - ALUMINUM - FLUSH
3.3	1	14-CT06HD00	TOP SLAB - 6ft DIA - H20
4	1	15-DB000000	DROP BOWL ASSEMBLY - 8in INLET
4.1	1	15-BR06SS35	BRACKET - 316SS - 6in PIPE
4.2	1	15-CP060000	COUPLING - FERNCO - 6in
4.3	1	15-DB410668	DROP BOWL - 4in thru 10in INLET x 6in OUTLET - 6ft - 8ft WET WELL
4.4	3.0 ft	70-PP0600DR	PIPE - PVC SDR35 - 6in DIA
5	2	17-AC38000B	BOLT KIT - UPPER GUIDE BAR BRACKET
6	2	17-IG0154EB	BRACKET - IGBB - 1in - 304SS - EBARA
7	2	17-UG0154EB	BRACKET - 304SS - UPPER GUIDE BAR - 1in
8	1	18-BR000000	BRACKET ASSEMBLY - 316SS - DISCHARGE SUPPORT
9	1	30-PU000000	PUMP SHIPPING CRATE
9.1	2	30-PU0000EB	PUMP - EBARA 80DLMKFMU65.54 - 7.5hp - 460V/3P
9.2	2	30-PUCABL07	PUMP OPTION: LONG CABLES - 75ft - 7.5HP
9.3	2	32-AC0000EB	LIFTING SLING ASSEMBLY - 316SS - 18ft TOTAL LENGTH
9.4	2	32-CGSS000D	CABLE SUPPORT GRIP - 304SS - 0.75in-0.99in
9.5	1	32-PL000000	LIFTING RING - PUMP
10	58.0 ft	40-PP0100S4	PIPE - 304SS SCH40 - 1in DIA - 4 @ 114in & 4 @ 60in
11	1	42-TF030000	CHECK VALVE - TIDFLEX - 3in
12	2	44-CP040AD0	COUPLING - 4in - ALPHA
13	2	45-FP040360	SPOOL - DI - 4in DIA x 36in - FLGxPE
14	2	45-FP041260	SPOOL - DI - 4in DIA x 126in - FLGxPE
15	2	46-EL0490DI	ELBOW - DI - 4in x 90deg - FLGxFLG
16	4	49-GS040000	GASKET - FLANGE - 4in
17	1	50-AC000000	WELL SHIPPING CRATE
17.1	3	12-GS000001	BARREL - GASKET
17.2	1	13-KY000000	HATCH KEY
17.3	4	18-AC00CH00	CABLE HANGER ASSEMBLY
17.4	4	18-HD080000	LIFTING CLUTCH - 8 TON
17.5	1	51-AC00NSTB	NEVER SIEZE - TUBE
17.6	68 ft	51-BT060000	JOINT WRAP - 6in - BOA TAPE
17.7	72.5 ft	51-SE0101SL	JOINT SEALANT - 1in - CONSEAL CS-202
17.8	1	62-CG00PT00	CORD GRIP - PRESSURE TRANSDUCER - WEDGE CLAMP
17.9	1	80-FI00PT00	DESSICANT FILTER - PRESSURE TRANSDUCER
17.10	2	80-FS20MSNL	FLOAT - 20m - MS1 - NOLTA
17.11	1	80-PT1500EH	PRESSURE TRANSDUCER - 0-15PSI - 60ft CABLE - E&H
18	3	59-KB080400	KOR-N-SEAL - 8in CORE - 4in thru 1.5in PIPE
19	1	59-KB1208P0	KOR-N-SEAL - 12in CORE x 8in PVC PIPE
20	2.5 ft	70-PP0300P4	PIPE - PVC SCH40 - 3in DIA

NOTE: CONTRACTOR TO SEAL ALL CONCRETE JOINTS AND PIPE PENETRATIONS WITH NON-SHRINK GROUT

NOTE: ALL DIMENSIONS AND ELEVATIONS SHOWN ARE NOMINAL DIMENSIONS. IT IS THE RESPONSIBILITY OF THE ON-SITE CONTRACTOR OR ROMTEC UTILITIES CUSTOMER (NOT ROMTEC UTILITIES) TO VERIFY THE ACCURACY OF ANY CRITICAL DIMENSIONS OR ELEVATIONS PRIOR TO SETTING OR INSTALLING ANY EQUIPMENT.

REVISION HISTORY

NO.	DATE	DESCRIPTION
2	6/17/2019	UPDATED WET WELL FOR LAUNCH
1	6-11-19	ADD FLOWMETER, MINOR CORRECTIONS

VERIFY SCALE

0 1" = 1'

DATE: 3/19/19

ROMTEC UTILITIES

18240 NORTH BANK ROAD
ROSEBURG, OREGON 97470
PHONE: (541) 496-9678
WWW.ROMTECUTILITIES.COM

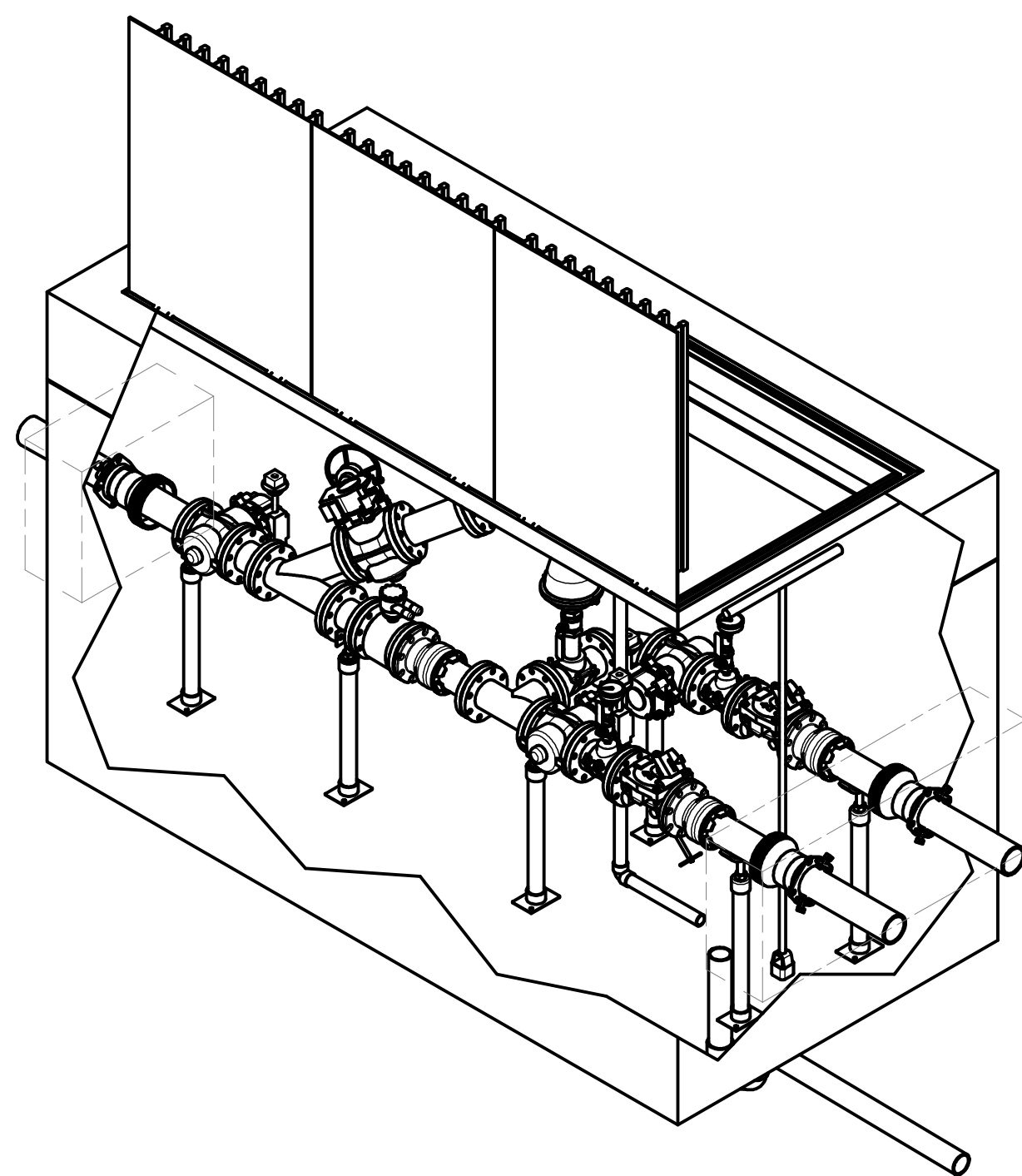
LUSTED PUMP STATION

GRESHAM, OREGON

WET WELL ASSEMBLY

COMPONENT DRAWING

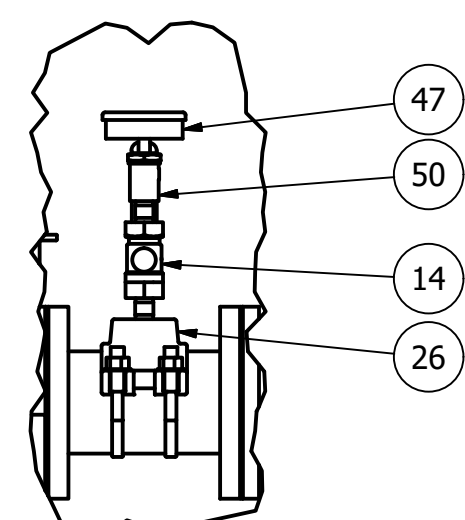
MECHANICAL SHEET
3 OF 5



ISO VIEW
SCALE 1 / 24

**5106 VALVE VAULT
4" PIPING AND VALVES
W/ FLOWMETER & PIGGING PORT**

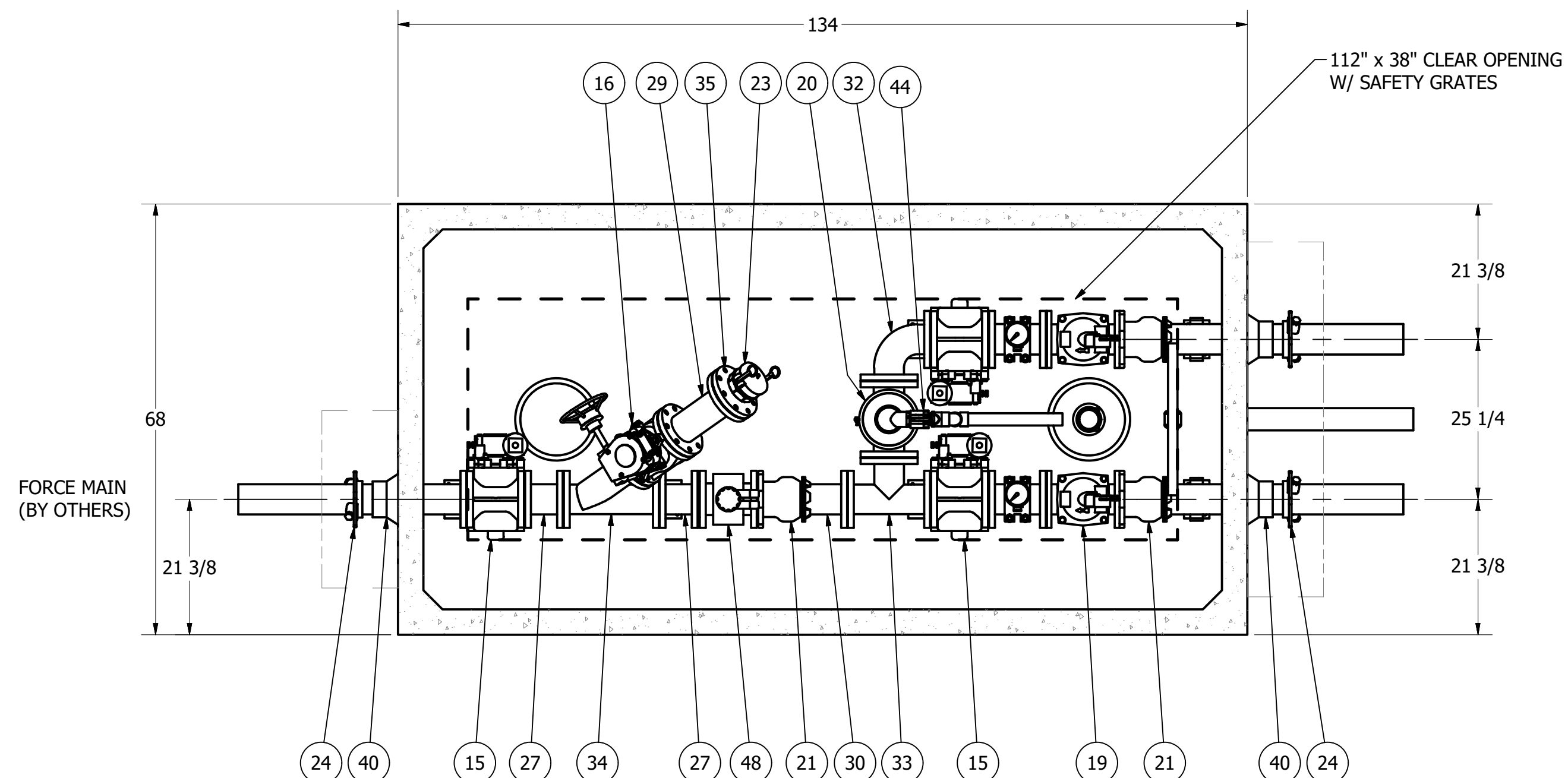
FOR DESIGN REVIEW



DETAIL E
SCALE 1 / 9

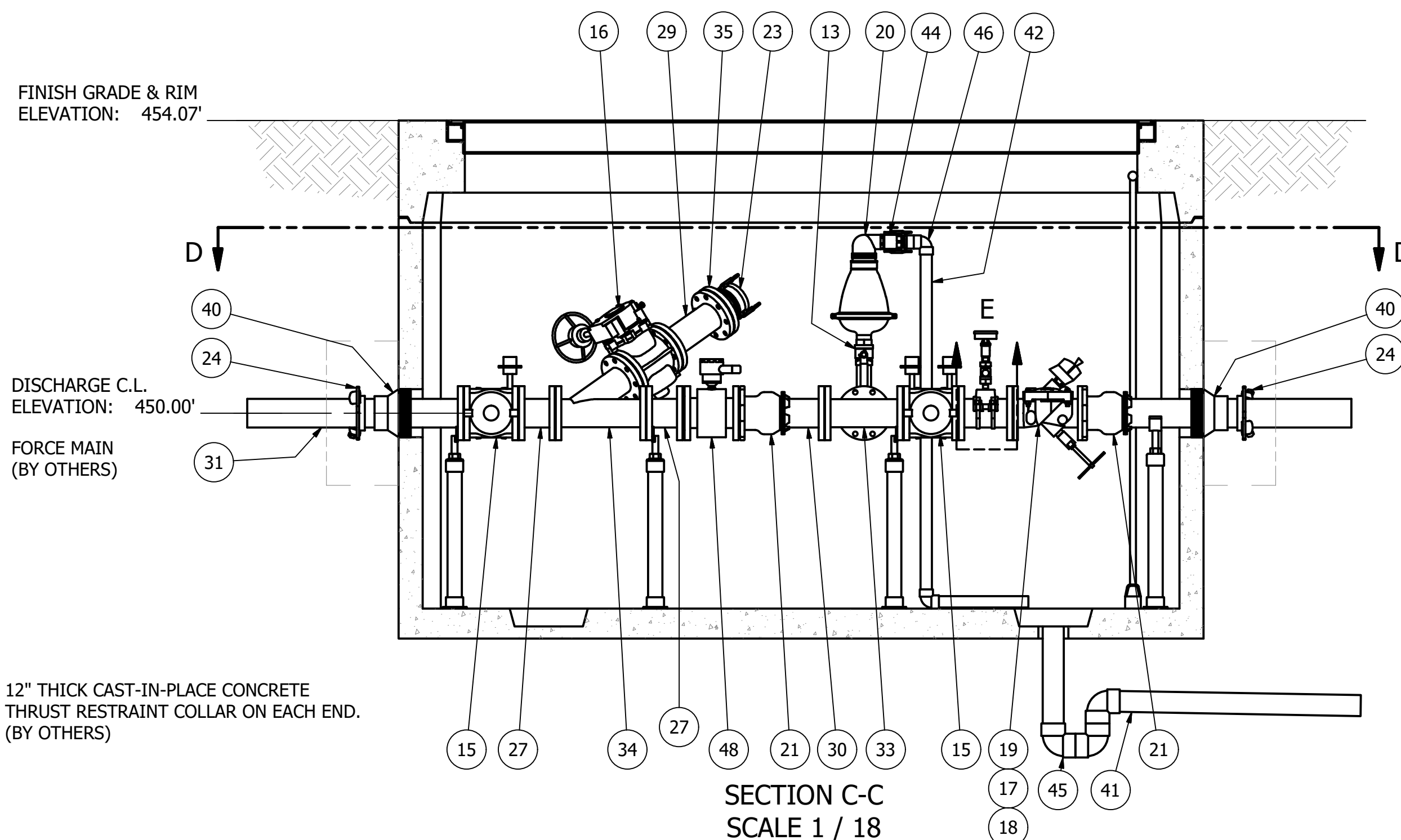
ALL MATERIALS SHOWN ON THIS SHEET WILL BE SUPPLIED BY ROMTEC UTILITIES AND DELIVERED TO THE SITE AFTER THE HOLE HAS BEEN EXCAVATED AND SHORED. THE CONTRACTOR SHALL SUPPLY A CRANE OF SUFFICIENT SIZE TO LOWER ALL THE CONCRETE PIECES INTO THE HOLE SAFELY. THE CONTRACTOR SHALL INSTALL THE WET WELL (AND VALVE VAULT AND METERING VAULT IF APPLICABLE). ROMTEC UTILITIES WILL PROVIDE A REPRESENTATIVE FOR TECHNICAL ASSISTANCE ON THE DAY OF INSTALLATION TO ANSWER ANY QUESTIONS THAT MAY ARISE. THE CONTRACTOR IS RESPONSIBLE FOR ALL PLUMBING AND ELECTRICAL CONNECTIONS AND INSTALLATION. ITEMS NOTED AS "BY OTHERS" WILL BE PROVIDED AND INSTALLED BY THE CONTRACTOR. ROMTEC UTILITIES WILL NOT INSTALL ANY OF THE COMPONENTS SHOWN ON THIS PAGE.

© 2019 ROMTEC INC. ALL RIGHTS RESERVED. THESE PLANS AND DRAWINGS MAY NOT BE REPRODUCED, ADAPTED, OR FURTHER DISTRIBUTED, AND NO COMPONENTS MAY BE CONSTRUCTED FROM THESE PLANS, WITHOUT WRITTEN PERMISSION OF ROMTEC, INC.

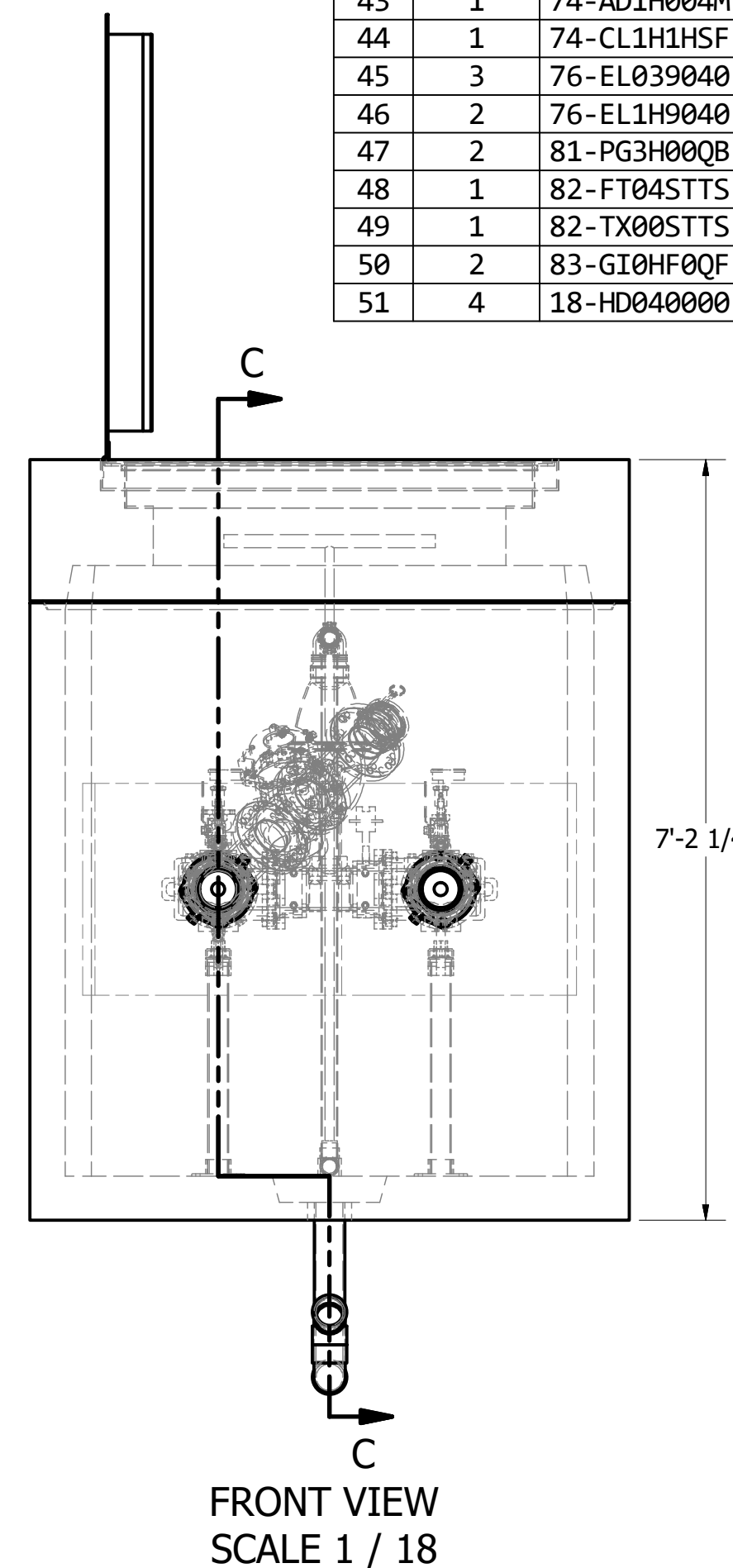


SECTION D-D
SCALE 1 / 18

**NOTE: TOP SLAB AND HATCH ARE
H-20 OCCASIONAL TRAFFIC RATED**



SECTION C-C
SCALE 1 / 18



FRONT VIEW
SCALE 1 / 18

NOTE: CONTRACTOR TO SEAL ALL CONCRETE JOINTS AND PIPE PENETRATIONS WITH NON-SHRINK GROUT

NOTE: ALL DIMENSIONS AND ELEVATIONS SHOWN ARE NOMINAL DIMENSIONS. IT IS THE RESPONSIBILITY OF THE ON-SITE CONTRACTOR OR ROMTEC UTILITIES CUSTOMER (NOT ROMTEC UTILITIES) TO VERIFY THE ACCURACY OF ANY CRITICAL DIMENSIONS OR ELEVATIONS PRIOR TO SETTING OR INSTALLING ANY EQUIPMENT.

PARTS LIST				
ITEM	QTY	STOCK NUMBER	DESCRIPTION	
1	1	20-CB510600	BASE - VV - 5106	
2	1	23-HH5106HE	HATCH - VV - 5106 - H20	
3	1	24-CT5106HD	TOP SLAB - VV - 5106 - H20	
4	1	25-KY0000BR	BRACKET - VALVE KEY	
5	1	25-KY0600GW	VALVE KEY - 6ft - GATE WRENCH	
6	4	25-PS04RUF	PIPE STAND - 304SS - 4in FLANGE	
7	2	25-PS04S92S	PIPE STAND - 304SS - 4in SADDLE	
8	6	25-PS0BBASE	PIPE STAND BASE - 304SS - 2in - 2 BOLT	
9	16 ft	40-PP0200S4	PIPE - 304SS SCH40 - 2in DIA	
10	7.0 ft	40-PP0400D0	PIPE - DI - 4in DIA - 2 @ 42in	
11	1	40-TT0206S4	NIPPLE - 304SS - 2in DIA x 6in	
12	4	40-TT0H02S4	NIPPLE - 304SS - 0.5in DIA x 2in	
13	1	41-BV0200S6	BALL VALVE - 316SS - 2in	
14	2	41-BV0H00S6	BALL VALVE - 316SS - 0.5in	
15	3	41-PV040GD0	PLUG VALVE - 4in - GEARED OP NUT	
16	1	41-PV040HD0	PLUG VALVE - 4in - GEARED HANDWHEEL	
17	1	42-AC0400BF	BACKFLOW ACTUATOR - 4in	
18	2	42-MI034600	MECHANICAL INDICATOR - 3in THRU 6in	
19	2	42-SF0400D0	CHECK VALVE - SWING FLEX - 4in	
20	1	43-AV020ARI	VALVE - AIR VACUUM RELEASE - 2in - ARI	
21	3	44-AD04RMAL	FLANGE ADAPTER - 4in - ALPHA	
22	1	44-CL0404DM	CAM LOCK - ALUM - 4in - PLUGxMNPT	
23	1	44-CL04ACAP	CAM LOCK - ALUM - 4in - SOCKET CAP	
24	3	44-RG040STR	RETAINER GLAND - 4in - HEAVY DUTY	
25	1	44-TS040200	TAPPING SADDLE - 4.8in x 2in NPT	
26	2	44-TS040H00	TAPPING SADDLE - 4.8in x 1.5in NPT	
27	2	45-FF040060	SPOOL - DI - 4in DIA x 6in - FLGxFLG	
28	2	45-FF040090	SPOOL - DI - 4in DIA x 9in - FLGxFLG	
29	2	45-FF040120	SPOOL - DI - 4in DIA x 12in - FLGxFLG	
30	1	45-FP040120	SPOOL - DI - 4in DIA x 12in - FLGxPE	
31	1	45-FP040360	SPOOL - DI - 4in DIA x 36in - FLGxPE	
32	1	46-EL0490DI	ELBOW - DI - 4in x 90deg - FLGxFLG	
33	1	46-TE0404DI	TEE - DI - 4in - FLGxFLG	
34	1	46-YL0404DI	WYE - DI - 4in FLGxFLG	
35	1	48-FL040FD0	FLANGE - DI - 4in - BLIND - 4" FNPT TAP	
36	2	48-PL0000HX	PLUG - 304SS - .25in NPT - HEX SOCKET	
37	17	49-GS040000	GASKET - FLANGE - 4in	
38	34 ft	51-BT060000	JOINT WRAP - 6in - BOA TAPE	
39	43.5 ft	51-SE0101SL	JOINT SEALANT - 1in - CONSEAL CS-202	
40	3	59-KB080400	KOR-N-SEAL - 8in CORE - 4in thru 1.5in PIPE	
41	5.0 ft	70-PP0300P4	PIPE - PVC SCH40 - 3in DIA	
42	6.1 ft	70-PP1H00P4	PIPE - PVC SCH40 - 1.5in DIA	
43	1	74-AD1H004M	ADAPTER - PVC SCH40 - 1.5in - SLIP x MNPT	
44	1	74-CL1H1HSF	CAM LOCK - 1.5in SOCKET x 1.5in FNPT	
45	3	76-EL039040	ELBOW - PVC SCH40 - 3in x 90deg - SLIP	
46	2	76-EL1H9040	ELBOW - PVC SCH40 - 1.5in x 90deg - SLIP	
47	2	81-PG3H00QB	PRESSURE GAUGE - 3.5in DIA - 60psig	
48	1	82-FT04STTS	FLOWTUBE - 4in - SEPARATE TYPE - TOSHIBA	
49	1	82-TX00STTS	TRANSMITTER - SEPARATE TYPE - TOSHIBA	
50	2	83-GI0HF00F	DIAPHRAGM SEAL - 0.5in FNPT x 0.25in FNPT	
51	4	18-HD040000	LIFTING CLUTCH - 4 TON	

VERIFY SCALE
AS SHOWN ON THE DRAWING
FOR ALL DIMENSIONS
UNLESS OTHERWISE NOTED

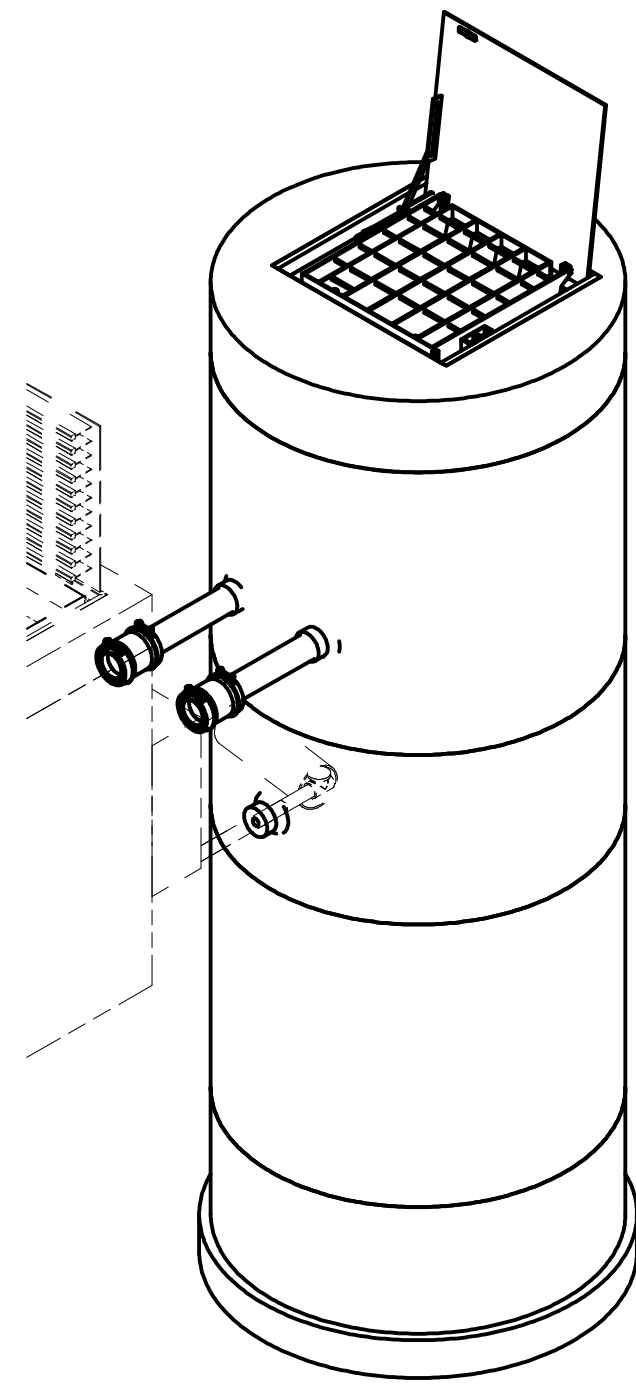
0 1" SCALE

ROMTEC UTILITIES
18240 NORTH BANK ROAD
ROSEBURG, OREGON 97470
PHONE: (541) 496-9678
WWW.ROMTECUTILITIES.COM

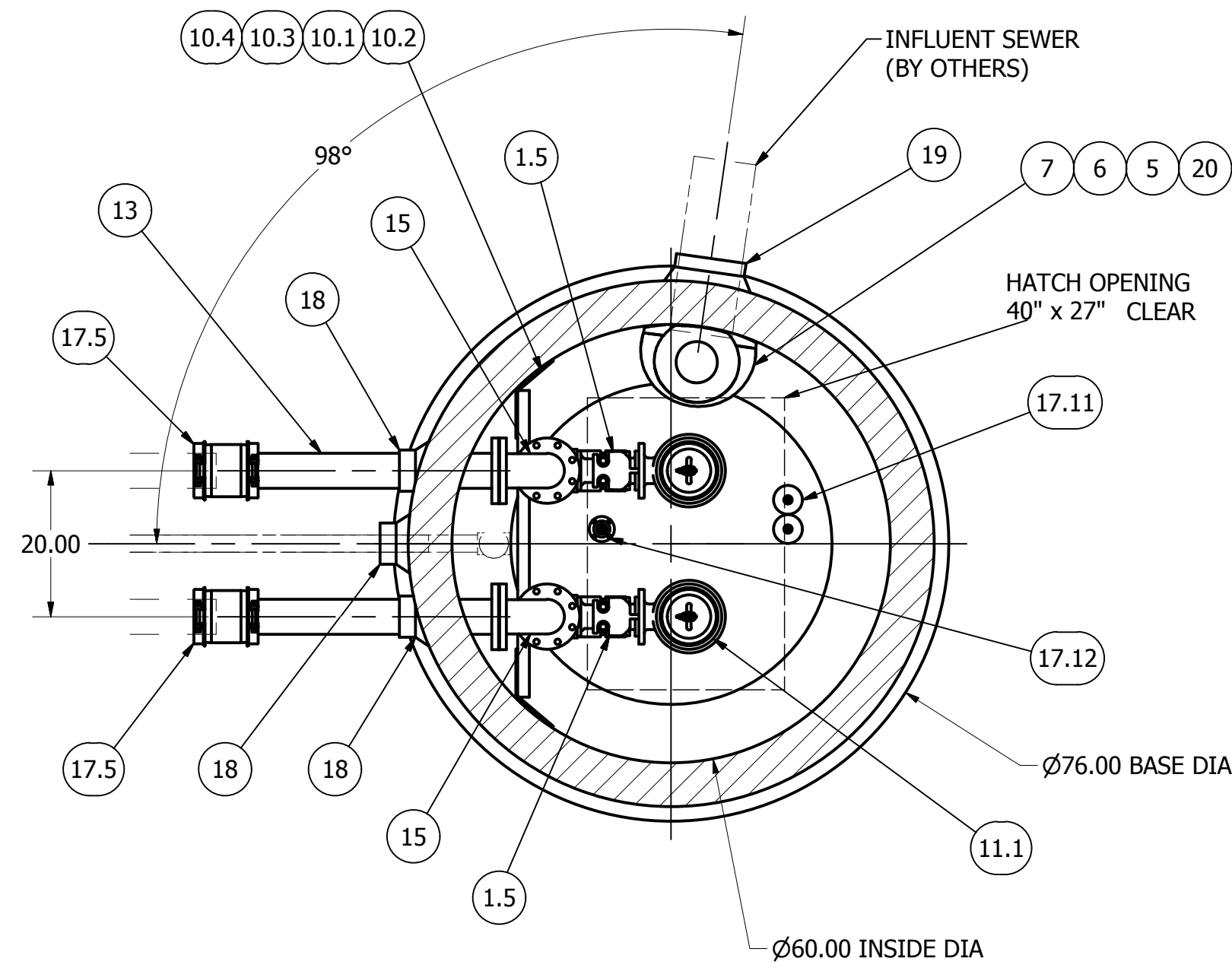
LUSTED PUMP STATION
GRESHAM, OREGON
VALVE VAULT ASSEMBLY
COMPONENT DRAWING

REV	DATE	DESCRIPTION	BY	AD
2	6/17/2019	UPDATED WET WELL FOR LAUNCH	KB	KB
1	6-11-19	ADD FLOWMETER, MINOR CORRECTIONS	KB	KB

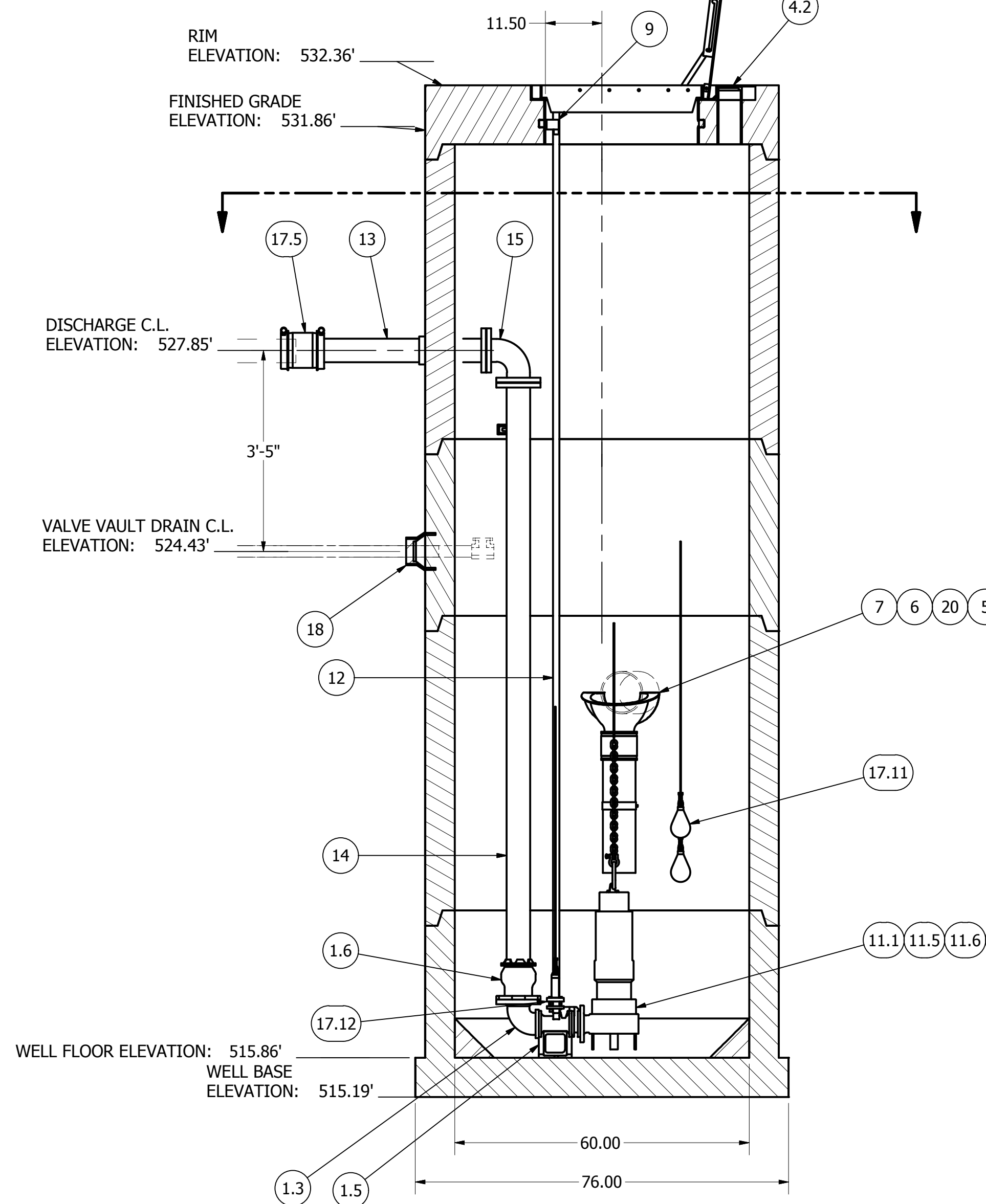
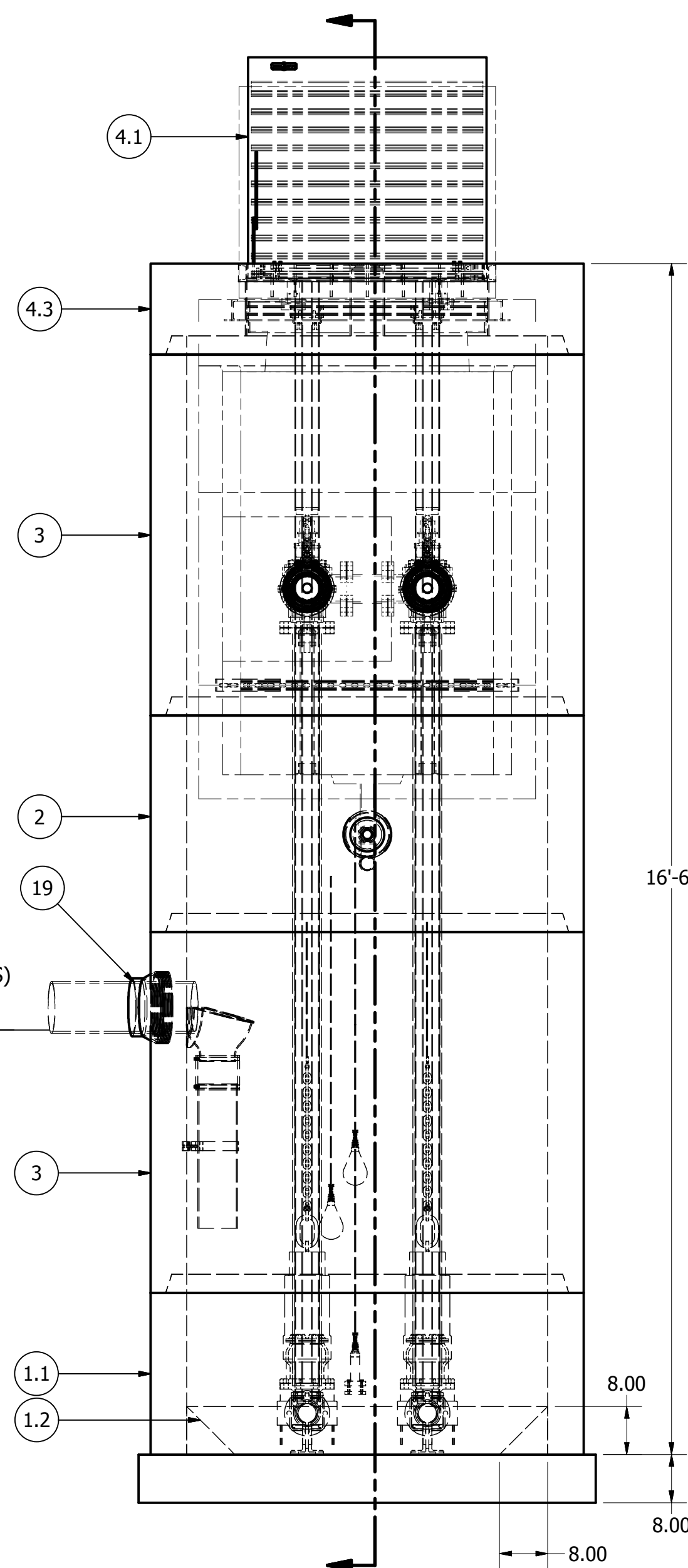
REVISION HISTORY



SENSOR AND ELEVATION TABLE		
LEVEL ELEVATION	DISTANCE BETWEEN POINTS	SET POINT DESCRIPTION
521.72		INVERT IN
521.61		BACK UP PUMPS START
	1.00	SENSOR SPACING
520.61		BACK UP PUMPS STOP
	0.25	SENSOR SPACING
520.36		BACK UP HL ALARM
520.11		HIGH LEVEL ALARM
	0.25	SENSOR SPACING
519.86		LAG PUMP START
	0.50	SENSOR SPACING
519.36		LEAD PUMP START
	1.50	SENSOR SPACING
517.86		PUMP STOP
	2.00	DISTANCE TO FLOOR
515.86		FLOOR ELEVATION



NOTE: TOP SLAB AND HATCH ARE H-20 OCCASIONAL TRAFFIC RATED



PARTS LIST			
ITEM	QTY	STOCK NUMBER	DESCRIPTION
1	1	10-CB000000	BASE SLAB ASSEMBLY
1.1	1	10-CB053000	BASE - WW - 5ft DIA x 30in
1.2	1	10-GR050000	GROUT RING - 5ft DIA - 8in
1.3	2	31-EL0304EB	DISCHARGE ELBOW - 3in x 4in - EBARA
1.4	2	31-HW00AKS6	ANCHOR KIT - 316SS - DISCHARGE ELBOW
1.5	2	31-QD03LMEB	QUICK DISCHARGE CONNECTOR - 3in - EBARA LM80
1.6	2	44-AD04RMAL	FLANGE ADAPTER - 4in - ALPHA
2	1	12-CR053600	BARREL - 5ft DIA x 3ft H
3	2	12-CR056000	BARREL - 5ft DIA x 5ft H
4	1	14-CT000000	TOP SLAB ASSEMBLY
4.1	1	13-HH05HDOU	HATCH - H20 - 5ft
4.2	1	13-VT0000AL	VENT - ALUMINUM - FLUSH
4.3	1	14-CT05HD00	TOP SLAB - 5ft DIA - H20
5	1	15-BR06SS35	BRACKET - 316SS - 6in PIPE
6	1	15-CP060000	COUPLING - FERNCO - 6in
7	1	15-DB410645	DROP BOWL - 4in thru 10in INLET x 6in OUTLET - 4ft - 5ft WET WELL
8	2	17-AC38000B	BOLT KIT - UPPER GUIDE BAR BRACKET
9	2	17-UG01S4EB	BRACKET - 304SS - UPPER GUIDE BAR - 1in - EBARA
10	1	18-BR000000	BRACKET ASSEMBLY - 316SS - DISCHARGE SUPPORT
10.1	2	18-AC00000B	BOLT KIT - 316SS - WALL BRACKET
10.2	2	18-AC00001B	WALL BRACKET - DISCHARGE SUPPORT
10.3	1	18-AC010HSB	BOLT KIT - DISCHARGE CLAMP - BOLT, WASHER, LOCK NUT
10.4	3.5	50-US0000S6	UNISTRUT - 316SS - SLOTTED
11	1	30-PU000000	PUMP SHIPPING CRATE
11.1	2	30-PU0000EB	EBARA 80DVBFMU63.74 - 5HP - 460V/3PHASE
11.2	2	30-PUCABL05	PUMP OPTION: LONG CABLES - 75ft - 5HP
11.3	2	30-PUTRIM00	PUMP OPTION: IMPELLER TRIM - .5HP THRU 5HP
11.4	2	32-AC580LNK	LINK - 316SS - .625in - OBLONG - 2800# WLL
11.5	2	32-BS7160SS	BOW SHACKLE - 316SS - 7-16in
11.6	2	32-CGA000SS	CORD GRIP - .750in - .990 - SS
11.7	1	32-PL000000	LIFTING RING - PUMP
11.8	4	32-PL3800S6	CHAIN - 316SS - 3-8in S5
11.9	2	32-PLLSANYL	LIFTING SLING ASSEMBLY - COATED CABLE - 16.5ft TOTAL LENGTH
12	62	40-PP0100S4	PIPE - 304SS SCH40 - 1in DIA (4 @ 15.5ft)
13	2	45-FP040360	SPOOL - DI - 4in DIA x 36in - FLGxPE
14	2	45-FP041260	SPOOL - DI - 4in DIA x 126in - FLGxPE
15	2	46-EL0490DI	ELBOW - DI - 4in x 90deg - FLGxFLG
16	4	49-GS040000	GASKET - FLANGE - 4in
17	1	50-AC000000	WELL SHIPPING CRATE
17.1	4	12-GS000001	BARREL - GASKET
17.2	1	13-KY000000	HATCH KEY
17.3	2	18-AC00CH00	CABLE HANGER ASSEMBLY
17.4	4	18-HD040000	LIFTING CLUTCH - 4 TON
17.5	2	44-CP040AD0	COUPLING - 4in - ALPHA
17.6	1	51-AC00NSTB	NEVER SIEZE - TUBE
17.7	80	51-BT060000	JOINT WRAP - 6in - BOA TAPE
17.8	84	51-SE3Q3QSL	SEALANT - 0.75in x 0.75in - 21ft/ROLL - CS-202
17.9	1	80-BR00PT00	BRACKET - PRESSURE TRANSDUCER x 18.5ft
17.10	1	80-FI00PT00	DESSICANT FILTER - PRESSURE TRANSDUCER
17.11	2	80-FS20MSNL	FLOAT - 20m - MS1 - NOLTA
17.12	1	80-PT1500EH	PRESSURE TRANSDUCER - 0-15 PSI - 60ft CABLE - E & H
18	3	59-KB080400	KOR-N-SEAL - 8in CORE - 4in thru 1.5in PIPE
19	1	59-KB1208PO	KOR-N-SEAL - 12in CORE x 8in PVC PIPE
20	2	70-PP0600DR	PIPE - PVC SDR35 - 6in DIA

FOR PRODUCTION

**5' DIAMETER WET WELL
4" DISCHARGE PIPING
DUPLEX EBARA PUMPS
4" - 577 VALVE VAULT**

NOTE: CONTRACTOR TO SEAL ALL CONCRETE JOINTS AND PIPE PENETRATIONS WITH NON-SHRINK GROUT

NOTE: ALL DIMENSIONS AND ELEVATIONS SHOWN ARE NOMINAL DIMENSIONS. IT IS THE RESPONSIBILITY OF THE ON-SITE CONTRACTOR OR ROMTEC UTILITIES CUSTOMER (NOT ROMTEC UTILITIES) TO VERIFY THE ACCURACY OF ANY CRITICAL DIMENSIONS OR ELEVATIONS PRIOR TO SETTING OR INSTALLING ANY EQUIPMENT.

ALL MATERIALS SHOWN ON THIS SHEET WILL BE SUPPLIED BY ROMTEC UTILITIES AND DELIVERED TO THE SITE AFTER THE HOLE HAS BEEN EXCAVATED AND SHORED. THE CONTRACTOR SHALL SUPPLY A CRANE OF SUFFICIENT SIZE TO LOWER ALL THE CONCRETE PIECES INTO THE HOLE SAFELY. THE CONTRACTOR SHALL INSTALL THE WET WELL (AND VALVE VAULT AND METERING VAULT IF APPLICABLE). ROMTEC UTILITIES WILL PROVIDE A REPRESENTATIVE FOR TECHNICAL ASSISTANCE ON THE DAY OF INSTALLATION TO ANSWER ANY QUESTIONS THAT MAY ARISE. THE CONTRACTOR IS RESPONSIBLE FOR ALL PLUMBING AND ELECTRICAL CONNECTIONS AND INSTALLATION. ITEMS NOTED AS "BY OTHERS" WILL BE PROVIDED AND INSTALLED BY THE CONTRACTOR. ROMTEC UTILITIES WILL NOT INSTALL ANY OF THE COMPONENTS SHOWN ON THIS PAGE.

© 2018 ROMTEC INC. ALL RIGHTS RESERVED. THESE PLANS AND DRAWINGS MAY NOT BE REPRODUCED, ADAPTED, OR FURTHER DISTRIBUTED, AND NO COMPONENTS MAY BE CONSTRUCTED FROM THESE PLANS, WITHOUT WRITTEN PERMISSION OF ROMTEC, INC.

ROMTEC UTILITIES
18240 NORTH BANK ROAD
ROSEBURG, OREGON 97470
PHONE: (541) 496-9678
WWW.ROMTECUTILITIES.COM

**SAM BARLOW HIGH SCHOOL
SAM BARLOW HIGH SCHOOL
5' - 4" DUPLEX WET WELL ASSY**

MECHANICAL SHEET
1 OF 3

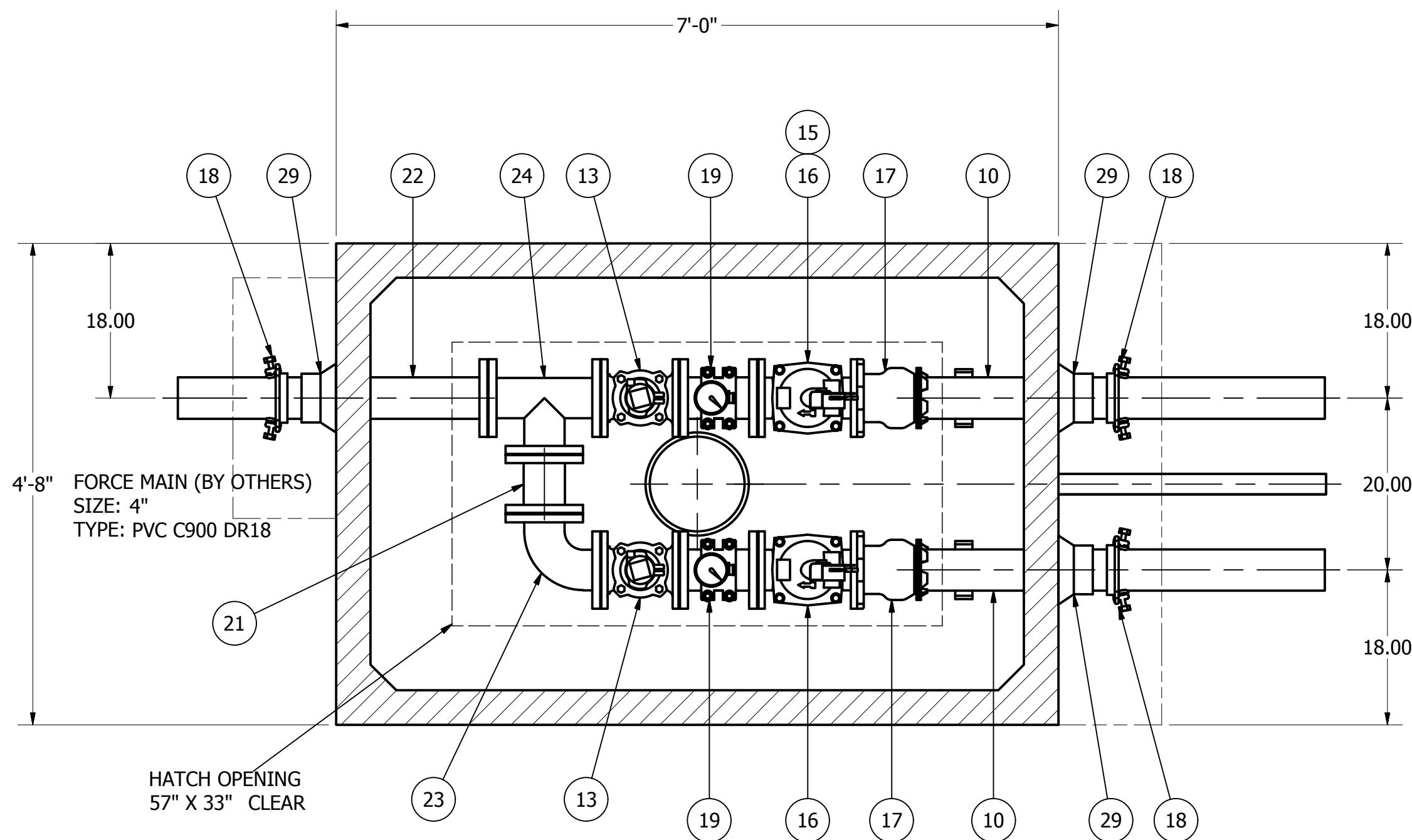
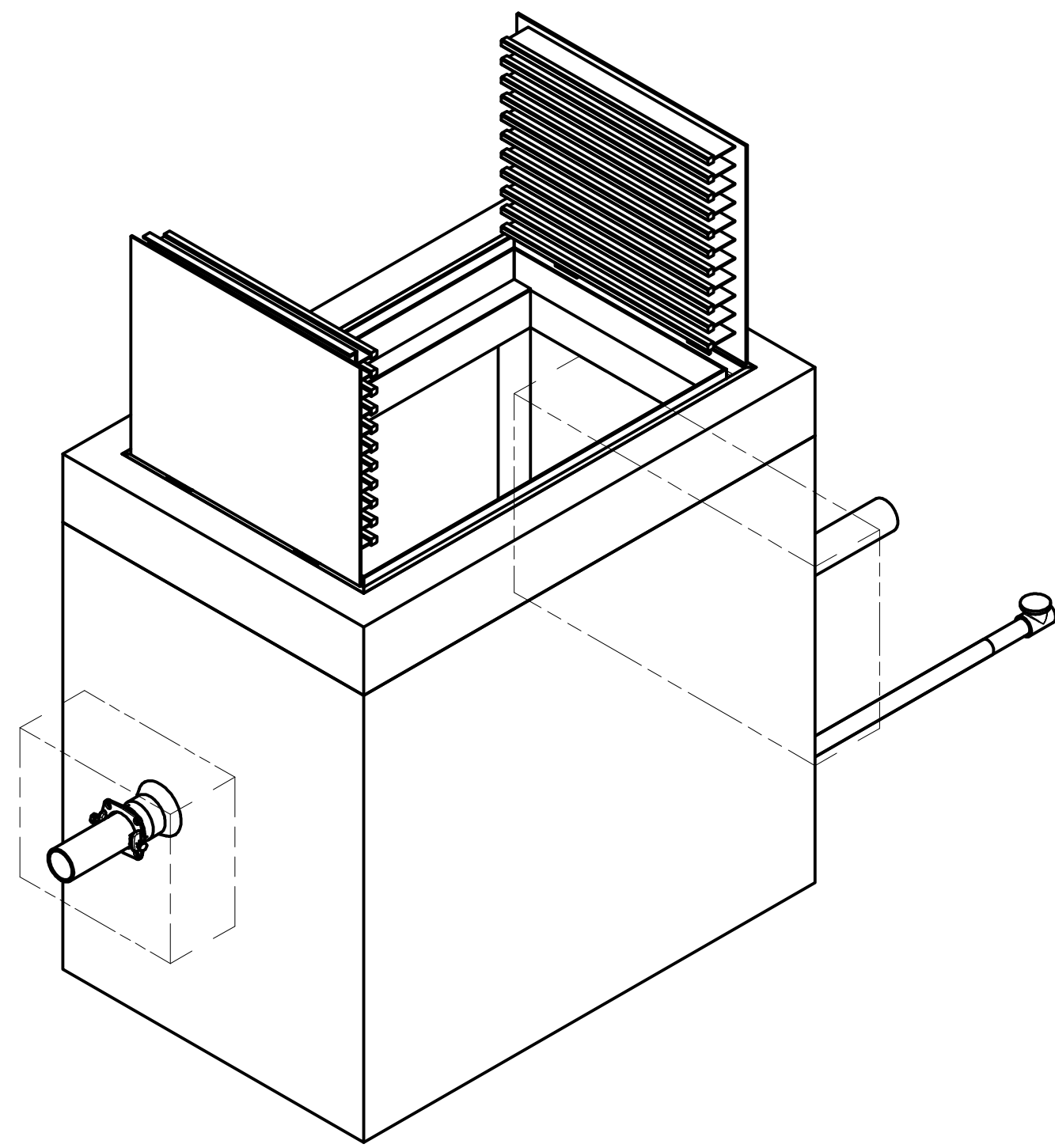
REV	DATE	DESCRIPTION	BY	AD
1	8-22-18	REVISED PER COMMENTS AND LAUNCH		

DATE: 5/30/2018

VERIFY SCALE: 0 1" (AS SHOWN ON THIS DRAWING)

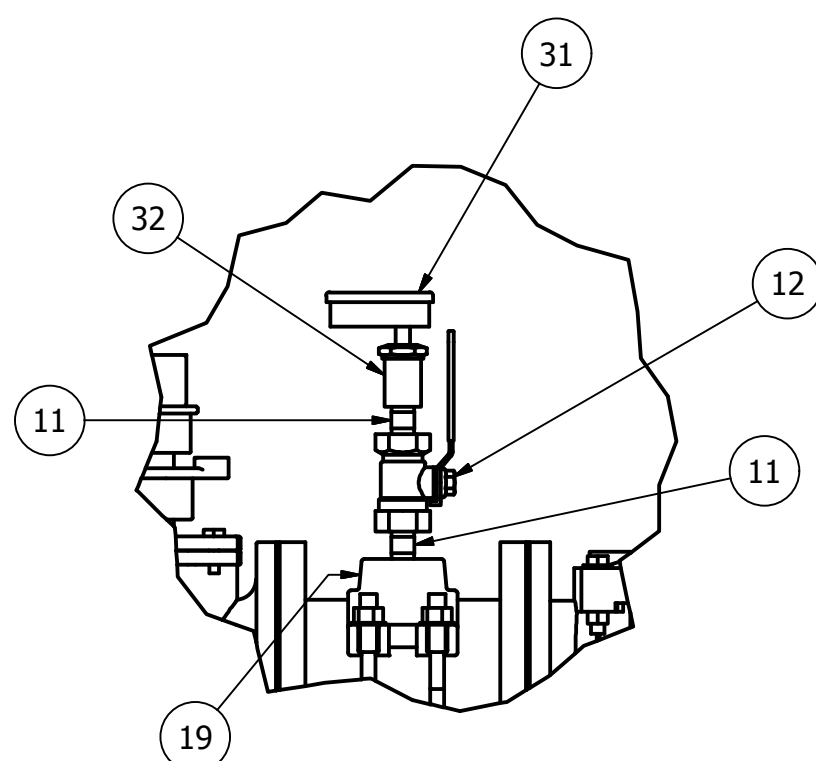
DSN: AD
DRN: AM
CKD: AD

REVISION HISTORY

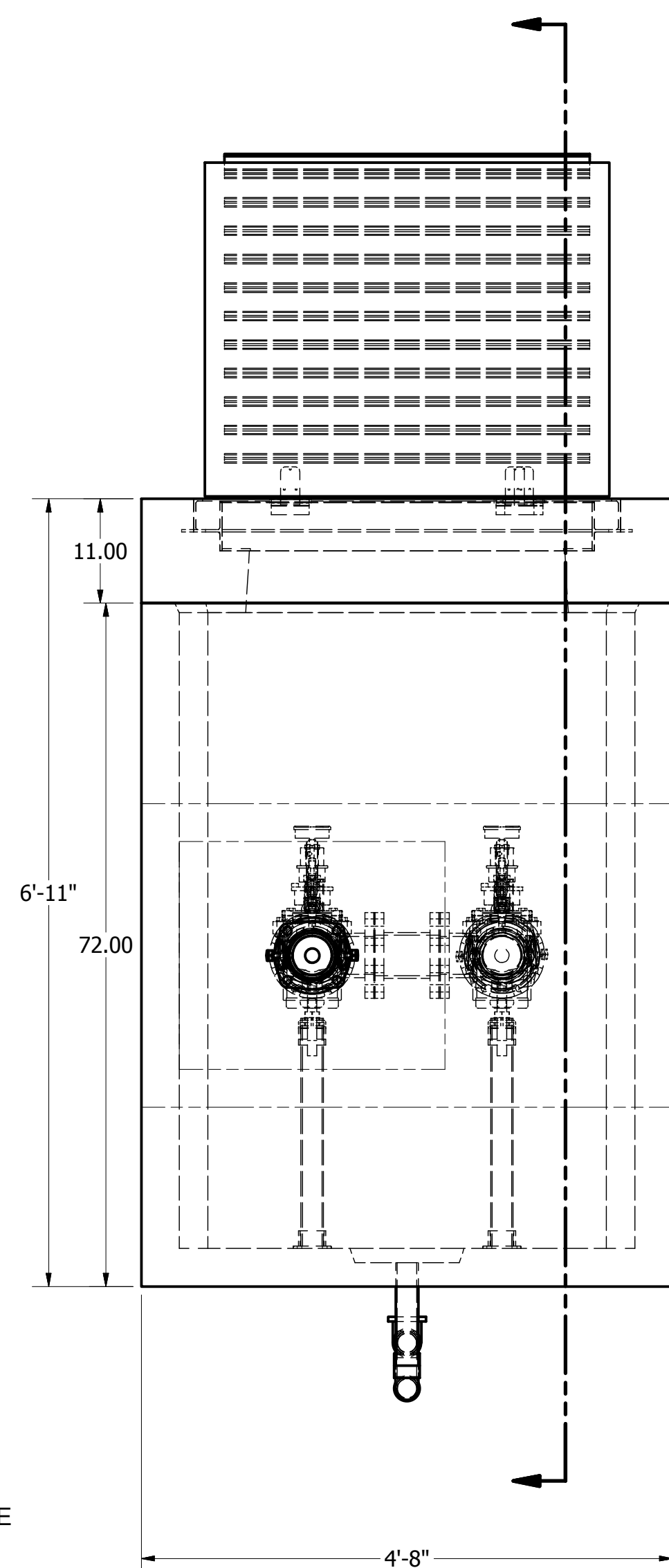


NOTE: TOP SLAB AND HATCH ARE H-20 OCCASIONAL TRAFFIC RATED

PARTS LIST			
ITEM	QTY	STOCK NUMBER	DESCRIPTION
1	1	20-CB577000	BASE - VV - 577
2	1	23-HH5770HE	HATCH - VV - 577 - H20
3	1	24-CT577HD0	TOP SLAB - VV - 577 - H20
4	1	25-KY0000BR	BRACKET - VALVE KEY
5	1	25-KY0600GW	VALVE KEY - 6ft - GATE WRENCH
6	2	25-PS04S89F	PIPE STAND - 304SS - 4in FLANGE
7	2	25-PS04S92S	PIPE STAND - 304SS - 4in SADDLE
8	4	25-PS0BBASE	PIPE STAND BASE - 304SS - 2in - 2 BOLTS
9	8	40-PP0200S4	PIPE - 304SS SCH40 - 2in DIA
10	8	40-PP0400D0	PIPE - DI - 4in DIA CL 52 (2 @ 48in)
11	4	40-TT0H02S4	NIPPLE - 304SS - 0.5in DIA x 2in
12	2	41-BV0H00S6	BALL VALVE - 316SS - 0.5in
13	2	41-PV0400D0	PLUG VALVE - 4in - DIRECT OP NUT
14	1	42-AC0400BF	BACKFLOW ACTUATOR - 4in
15	2	42-MI040000	MECHANICAL INDICATOR - 4in
16	2	42-SF0400D0	CHECK VALVE - SWING FLEX - 4in
17	2	44-AD04RMAL	FLANGE ADAPTER - 4in - ALPHA
18	3	44-RG040STR	RETAINER GLAND - 4in
19	2	44-TS040H00	TAPPING SADDLE - 4.8in x .5in NPT
20	2	45-FF040090	SPOOL - DI - 4in DIA x 9in - FLGxFLG
21	1	45-FF04063Q	SPOOL - DI - 4in DIA x 6.75in - FLGxFLG
22	1	45-FF040360	SPOOL - DI - 4in DIA x 3.6in - FLGxPE
23	1	46-EL0490DI	ELBOW - DI - 4in x 90deg - FLGxFLG
24	1	46-TE0404DI	TEE - DI - 4in - FLGxFLG
25	2	48-PL0Q00HX	PLUG - 304SS - .25in NPT - HEX SOCKET
26	9	49-GS040000	GASKET - FLANGE - 4in
27	24	51-BT060000	JOINT WRAP - 6in - BOA TAPE
28	29	51-SE0101SL	JOINT SEALANT - 1in - CONSEAL CS-202
29	3	59-KB080400	KOR-N-SEAL - 8in CORE - 4in thru 1.5in PIPE
30	1	70-DR999999	DRAIN - VALVE VAULT
30.1	20	70-PP0200P4	PIPE - PVC SCH40 - 2in DIA
30.2	1	72-DB0205P8	DRAINBACK VALVE - PVC - 2in
30.3	3	76-EL029040	ELBOW - PVC SCH40 - 2in x 90deg - SLIP
31	2	81-PG3H00QB	PRESSURE GAUGE - 3.5in DIA x .25in MNPT BACK - 30#
32	2	83-GI0HF0QF	DIAPHRAGM SEAL - 0.5in FNPT x 0.25in FNPT



**DETAIL G
SCALE 1 / 7**

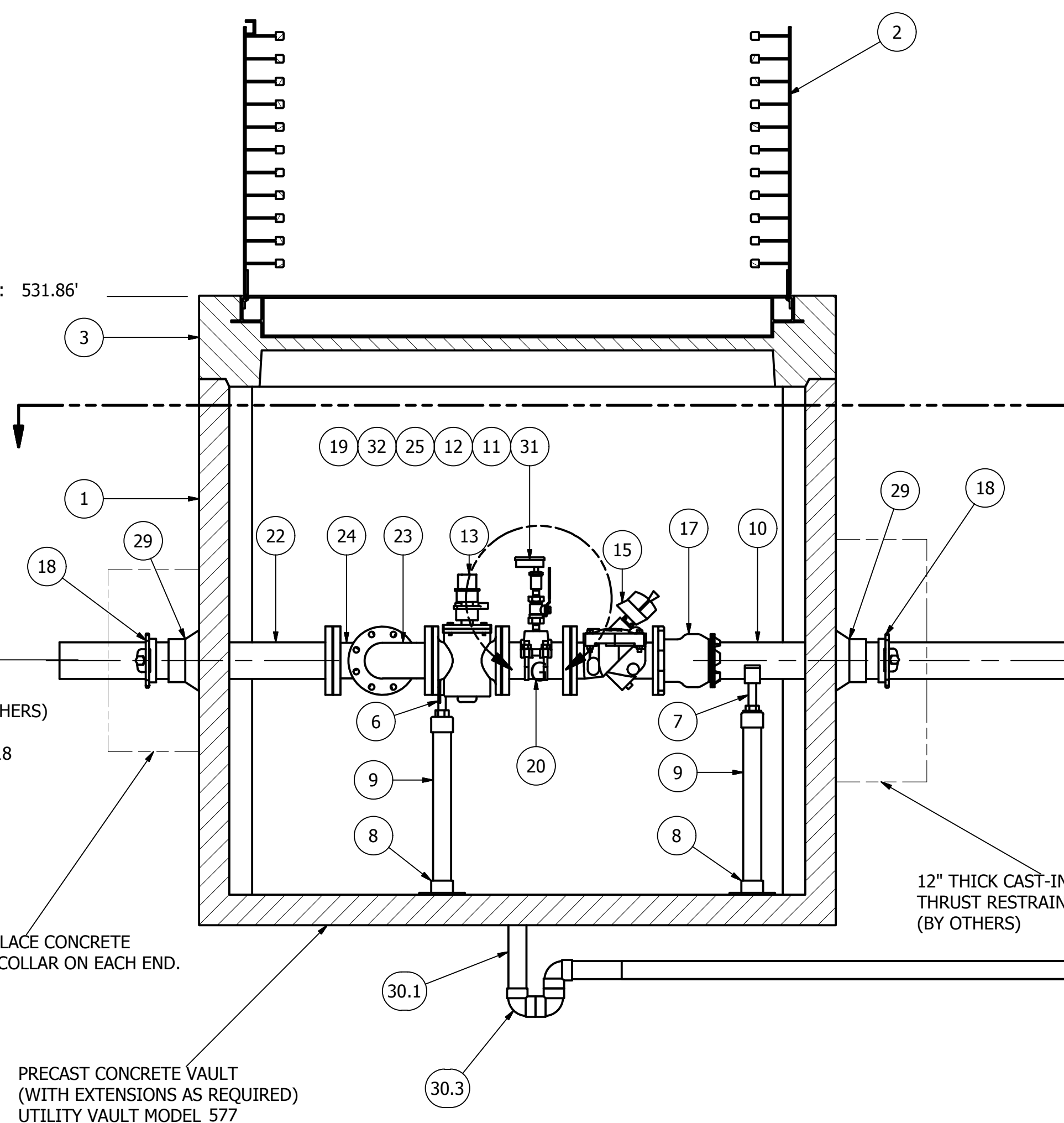


FINISHED GRADE AND RIM ELEVATION: 531.86'

DISCHARGE C.L. ELEVATION: 527.85'

FORCE MAIN (BY OTHERS) SIZE: 4" TYPE: PVC C900 DR18

12" THICK CAST-IN-PLACE CONCRETE THRUST RESTRAINT COLLAR ON EACH END. (BY OTHERS)



PRECAST CONCRETE VAULT (WITH EXTENSIONS AS REQUIRED) UTILITY VAULT MODEL 577

12" THICK CAST-IN-PLACE CONCRETE THRUST RESTRAINT COLLAR ON EACH END. (BY OTHERS)

**577 VALVE VAULT
4" PIPING AND VALVES**

FOR PRODUCTION

NOTE: ALL CONCRETE JOINTS AND PIPE PENETRATIONS ARE TO BE GROUT SEALED BY THE INSTALLING CONTRACTOR.

NOTE: ALL DIMENSIONS AND ELEVATIONS SHOWN ARE NOMINAL DIMENSIONS. IT IS THE RESPONSIBILITY OF THE ON-SITE CONTRACTOR OR ROMTEC UTILITIES CUSTOMER (NOT ROMTEC UTILITIES) TO VERIFY THE ACCURACY OF ANY CRITICAL DIMENSIONS OR ELEVATIONS PRIOR TO SETTING OR INSTALLING ANY EQUIPMENT.

ALL MATERIALS SHOWN ON THIS SHEET WILL BE SUPPLIED BY ROMTEC UTILITIES AND DELIVERED TO THE SITE AFTER THE HOLE HAS BEEN EXCAVATED AND SHORED. THE CONTRACTOR SHALL SUPPLY A CRANE OF SUFFICIENT SIZE TO LOWER ALL THE CONCRETE PIECES INTO THE HOLE SAFELY. THE CONTRACTOR SHALL INSTALL THE WET WELL (AND VALVE VAULT AND METERING VAULT IF APPLICABLE). ROMTEC UTILITIES WILL PROVIDE A REPRESENTATIVE FOR TECHNICAL ASSISTANCE ON THE DAY OF INSTALLATION TO ANSWER ANY QUESTIONS THAT MAY ARISE. THE CONTRACTOR IS RESPONSIBLE FOR ALL PLUMBING AND ELECTRICAL CONNECTIONS AND INSTALLATION. ITEMS NOTED AS "BY OTHERS" WILL BE PROVIDED AND INSTALLED BY THE CONTRACTOR. ROMTEC UTILITIES WILL NOT INSTALL ANY OF THE COMPONENTS SHOWN ON THIS PAGE.

© 2018 ROMTEC INC. ALL RIGHTS RESERVED. THESE PLANS AND DRAWINGS MAY NOT BE REPRODUCED, ADAPTED, OR FURTHER DISTRIBUTED, AND NO COMPONENTS MAY BE CONSTRUCTED FROM THESE PLANS, WITHOUT WRITTEN PERMISSION OF ROMTEC, INC.

REV	DATE	DESCRIPTION	APPROVED
1	8/22/2018	REVISED PER COMMENTS AND LAUNCH	AD

VERIFY SCALE
0 1"
DATE: 05/30/2018

ROMTEC UTILITIES
18240 NORTH BANK ROAD
ROSEBURG, OREGON 97470
PHONE: (541) 496-9678
WWW.ROMTECUTILITIES.COM

SAM BARLOW HIGH SCHOOL
SAM BARLOW HIGH SCHOOL
4" - 577 VALVE VAULT ASSEMBLY
MECHANICAL SHEET
2 OF 3