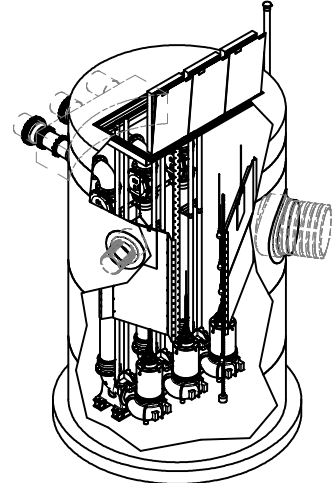


2.02 MECHANICAL PLANS

FOR PRODUCTION



ISO VIEW  
SCALE 1 / 48

12" DIAMETER WET WELL  
12" DISCHARGE PIPING  
EBARA DSC4 PUMPS  
12" CHECK VALVES & PIPING

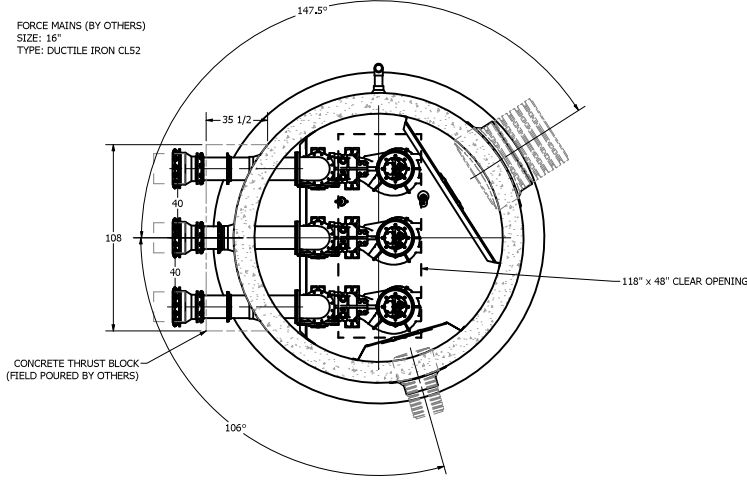
NOTE:  
CONDUIT TO CONTROL PANEL (BY OTHERS)  
MINIMUM:  
(3) FOR POWER  
(1) FOR LEVEL SENSING

ALL MATERIALS SHOWN ON THIS SHEET WILL BE SUPPLIED BY ROMTEC UTILITIES AND DELIVERED TO THE SITE AFTER THE HOLE HAS BEEN EXCAVATED AND SHORED. THE CONTRACTOR SHALL SUPPLY A CRANE OF SUFFICIENT SIZE TO LOWER ALL THE CONCRETE PIECES INTO THE HOLE SAFELY. THE CONTRACTOR SHALL INSTALL THE WET WELL (AND VALVE VAULT AND METERING VAULT IF APPLICABLE). ROMTEC UTILITIES WILL PROVIDE A REPRESENTATIVE FOR TECHNICAL ASSISTANCE ON THE DAY OF INSTALLATION TO ANSWER ANY QUESTIONS THAT MAY ARISE. THE CONTRACTOR IS RESPONSIBLE FOR ALL PLUMBING AND ELECTRICAL CONNECTIONS AND INSTALLATION. ITEMS NOTED AS "BY OTHERS" WILL BE PROVIDED AND INSTALLED BY THE CONTRACTOR. ROMTEC UTILITIES WILL NOT INSTALL ANY OF THE COMPONENTS SHOWN ON THIS PAGE.



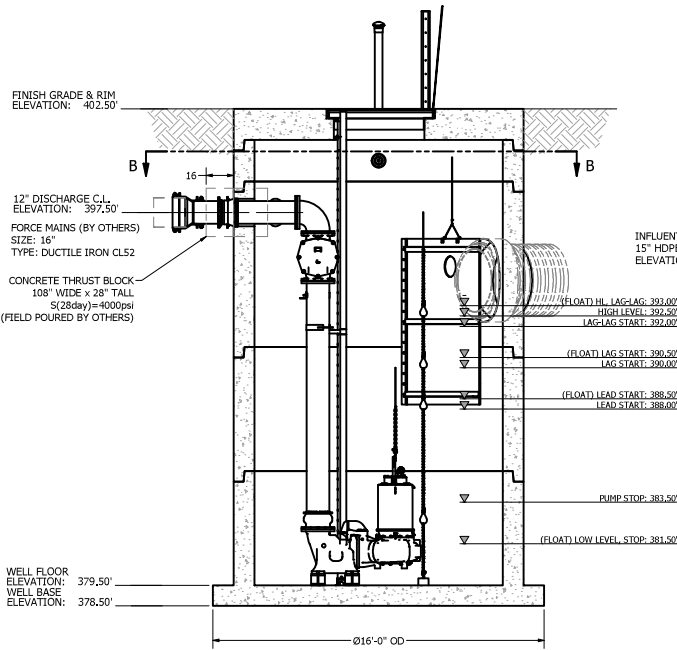
© 2020 ROMTEC INC. ALL RIGHTS RESERVED.  
THESE PLANS AND DRAWINGS MAY NOT BE REPRODUCED, ADAPTED, OR FURTHER DISTRIBUTED, AND NO COMPONENTS MAY BE CONSTRUCTED FROM THESE PLANS, WITHOUT WRITTEN PERMISSION OF ROMTEC, INC.

FORCE MAINS (BY OTHERS)  
SIZE: 16"  
TYPE: DUCTILE IRON CL52



SECTION B-B  
SCALE 1 / 36  
NOTE: TOP SLAB AND HATCH ARE  
H-20 OCCASIONAL TRAFFIC RATED

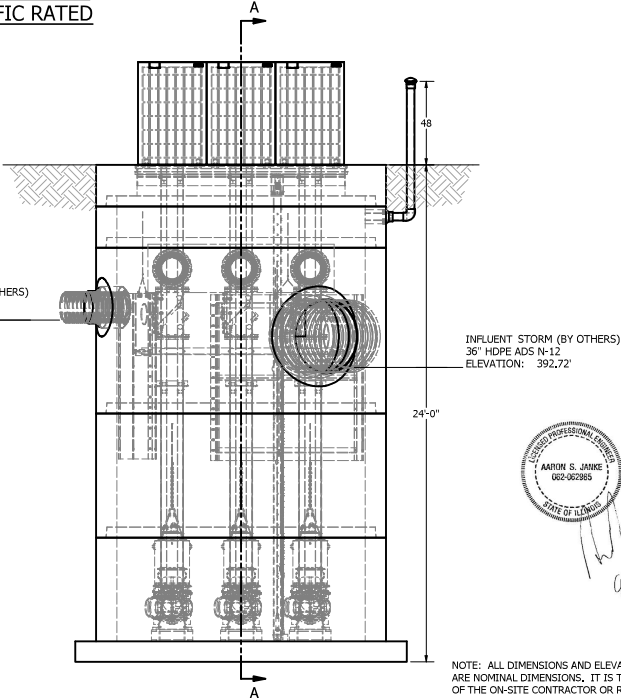
FINISH GRADE & RIM  
ELEVATION: -402.50'



SECTION A-A  
SCALE 1 / 36

**PUMP PACKAGE**  
CONFIGURATION: TRIPLEX  
MODEL: EBARA 300DSC4FMO  
HP: 50 HP  
DUTY POINT: 3741 GPM AT 31.4 TDH

**FEATURES**  
HATCH: H-20 OCCASIONAL, ALUM  
DISCHARGE PIPING: 12" DUCTILE IRON  
PRIMARY LEVEL SENSING: PRESSURE TRANSDUCER  
BACKUP LEVEL SENSING: (4) FLOAT SWITCHES  
STAINLESS STEEL GUIDE RAILS  
QUICK CONNECT DISCHARGE ELBOWS  
INFLUENT DEFLECTOR PANELS  
SWING FLEX CHECK VALVES  
4" MUSHROOM CAP VENT  
FLOAT ANCHOR & CHAIN



NOTE: ALL DIMENSIONS AND ELEVATIONS SHOWN ARE NOMINAL DIMENSIONS. IT IS THE RESPONSIBILITY OF THE ON-SITE CONTRACTOR OR ROMTEC UTILITIES CUSTOMER (NOT ROMTEC UTILITIES) TO VERIFY THE ACCURACY OF ANY CRITICAL DIMENSIONS OR ELEVATIONS PRIOR TO SETTING OR INSTALLING ANY EQUIPMENT.



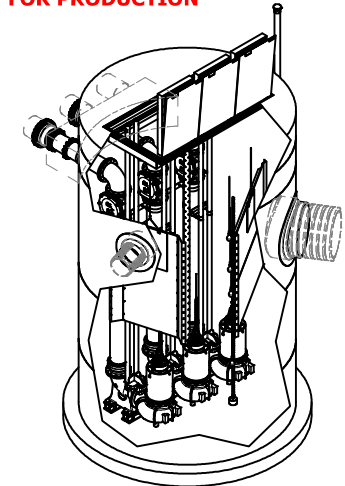
FOR PRODUCTION

REV	DATE	DESCRIPTION	BY
1	9/13/2021	PRECAST UPLIFT COLLAR	KB
2	8/13/2021	UPLIFT COLLAR DETAIL & NOTES	KB
3	7/16/2021	PUMP CHANGE, LINDSAY PRECAST CONCRETE	KB
4	6-29-21	ADD COMPONENT DRAWING, VENT HEIGHT, 16x12 REDUCERS	KB
REV	DATE	DESCRIPTION	BY
1	6-16-21	REVISION HISTORY	BY

**ROMTEC UTILITIES**  
18240 NORTH BANK ROAD  
ROSEBURG, OREGON 97470  
PHONE: (541) 966-9678  
WWW.ROMTECUTILITIES.COM

UNION PACIFIC RAILROAD  
ALTON & SOUTHER YARD, EAST ST. LOUIS, IL  
STORMWATER PUMP STATION  
SYSTEM DRAWING

FOR PRODUCTION



ISO  
SCALE 1 / 48

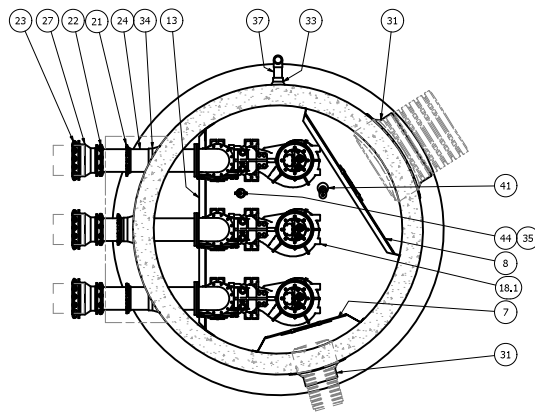
12" DIAMETER WET WELL  
12" DISCHARGE PIPING  
EBARA DLFU PUMPS  
12" CHECK VALVES & PIPING

NOTE:  
CONDUIT TO CONTROL PANEL (BY OTHERS)  
MINIMUM:  
(3) FOR POWER  
(1) FOR LEVEL SENSING

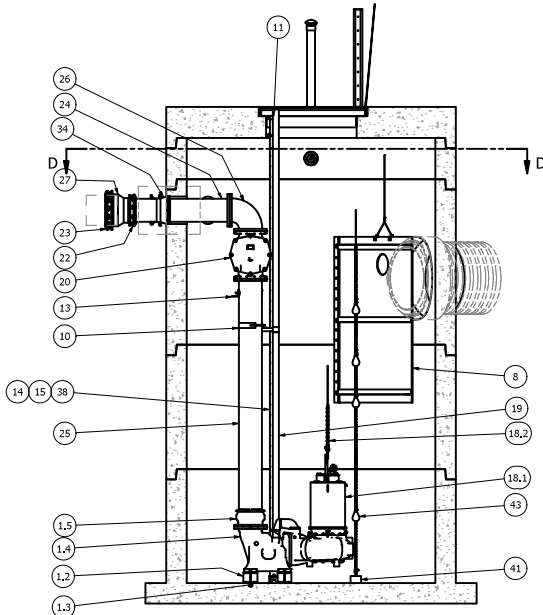
ALL MATERIALS SHOWN ON THIS SHEET WILL BE SUPPLIED BY ROMTEC UTILITIES AND DELIVERED TO THE SITE AFTER THE HOLE HAS BEEN EXCAVATED AND SHORED. THE CONTRACTOR SHALL SUPPLY A CRANE OF SUFFICIENT SIZE TO LOWER ALL THE CONCRETE PIECES INTO THE HOLE SAFELY. THE CONTRACTOR SHALL INSTALL THE WET WELL (AND VALVE VAULT AND METERING VAULT IF APPLICABLE). ROMTEC UTILITIES WILL PROVIDE A REPRESENTATIVE FOR TECHNICAL ASSISTANCE ON THE DAY OF INSTALLATION TO ANSWER ANY QUESTIONS THAT MAY ARISE. THE CONTRACTOR IS RESPONSIBLE FOR ALL PLUMBING AND ELECTRICAL CONNECTIONS AND INSTALLATION. ITEMS NOTED AS "BY OTHERS" WILL BE PROVIDED AND INSTALLED BY THE CONTRACTOR. ROMTEC UTILITIES WILL NOT INSTALL ANY OF THE COMPONENTS SHOWN ON THIS PAGE.



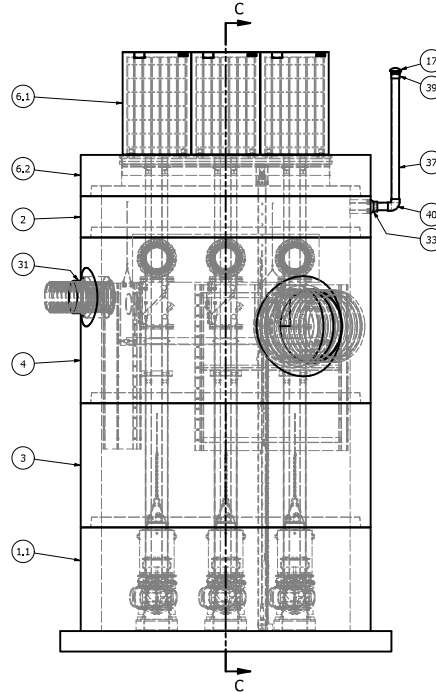
© 2020 ROMTEC INC. ALL RIGHTS RESERVED.  
THESE PLANS AND DRAWINGS MAY NOT BE REPRODUCED, ADAPTED, OR FURTHER DISTRIBUTED, AND NO COMPONENTS MAY BE CONSTRUCTED FROM THESE PLANS, WITHOUT WRITTEN PERMISSION OF ROMTEC, INC.



SECTION D-D  
SCALE 1 / 36



SECTION C-C  
SCALE 1 / 36



		PARTS LIST	
ITEM	QTY	STOCK NUMBER	DESCRIPTION
1	1	10-CB000000	BASE SLAB ASSEMBLY
1.1	1	10-99999999	BASE - 1W - 12ft DIA x 66in H
1.2	6	31-99999999	RISER BLOCK - DISCHARGE ELBOW
1.3	3	31-H000AK56	ANCHOR KIT - 316SS - DISCHARGE ELBOW
1.4	3	31-99999999	QOC - 300DSC4
1.5	3	44-AD12RMAL	FLANGE ADAPTER - 12in - ALPHA
2	1	12-CR1224CP	BARREL - 12ft DIA x 2ft H
3	1	12-CR1272CP	BARREL - 12ft DIA x 6ft H
4	1	12-CR1296CP	BARREL - 12ft DIA x 8ft H
5	1	13-KY000000	HATCH KEY
6	1	14-CT000000	TOP SLAB ASSEMBLY
6.1	1	13-HH12HDT	HATCH - H20 - 12ft - TRIPLEX
6.2	1	14-CT12HDT	TOP SLAB - 12ft DIA - H20 - TRIPLEX
7	1	15-DP100000	DEFLECTOR PANEL ASSEMBLY - 10ft
8	1	15-DP120000	DEFLECTOR PANEL ASSEMBLY - 12ft DIA x 8ft
9	3	17-AC300000	BOLT KIT - UPPER GUIDE BAR BRACKET
10	3	17-IO0356EB	BRACKET - 316SS - INTERMEDIATE GUIDE - 3in
11	3	17-UG0354EB	BRACKET - 316SS - UPPER GUIDE BAR - 3in
12	5	18-AC00CH00	CABLE HANGER ASSEMBLY - 316SS
13	1	18-BR000000	BRACKET ASSEMBLY - 316SS - DISCHARGE SUPPORT
14	1	18-BR04SWLO	STILLING WELL - LOWER SUPPORT - 4in
15	1	18-BR04SWUP	STILLING WELL - UPPER SUPPORT - 4in
16	4	18-HD080000	LIFTING CLUTCH - 8 TON
17	1	18-VI0000MC	VENT - 4in - MUSHROOM CAP
18	1	30-PU000000	PUMP SHIPPING CRATE
18.1	3	30-99999999	PUMP - EBARA 300DSC4 50HP
18.2	3	32-AC0000EB	LIFTING SLING ASSEMBLY - 316SS CHAIN
18.3	3	32-CGS5000F	CABLE SUPPORT GRIP - 304SS - 1.25in-1.49in
18.4	1	32-PLGE0000	GRIP EYE UNIT
19	123.0 ft	40-PP0300S4	PIPE - 304SS SCH40 - 3in DIA
20	3	42-SF120000	CHECK VALVE - SWIRL FLEX - 12in
21	3	44-RG120STR	RETAINER GLAND - 12in
22	3	44-RJ1200S0	JOINT RESTRAINT - 12in
23	3	44-RJ1600S0	JOINT RESTRAINT - 16in
24	3	45-FP120600	SPOOL - DI - 12in DIA x 60in - FLGxPE
25	3	45-FP121440	SPOOL - DI - 12in DIA x 144in - FLGxPE
26	3	46-EL1290DI	ELBOW - DI - 12in x 90deg - FLGxFLG
27	3	48-RD1612CM	REDUCER - DI - 16in x 12in - CONCENTRIC - MJxMJ
28	9	49-GS120000	GASKET - FLANGE - 12in
29	1	51-AC00NSTB	NEVER SIEZE - TUBE
30	225 ft	51-JWCS2120	JOINT WRAP - 12in - CONSEAL CS-212
31	2	51-SECS1800	SEALANT - BUCKET - CONSEAL CS-1800
32	225 ft	51-SECS231L	JOINT SEALANT - 2in x 1in - CONSEAL CS-231
33	1	59-KB080400	KOR-N-SEAL - 8in CORE - 4in thru 3.5in PIPE
34	3	59-KB1612DI	KOR-N-SEAL - 16in CORE x 12in DIPS PIPE
35	1	62-CG00PT00	CORD GRIP - PRESSURE TRANSDUCER - WEDGE CLAMP
36	1.0 ft	70-PP0400P4	PIPE - PVC SCH40 - 4in DIA
37	8.2 ft	70-PP0400P8	PIPE - PVC SCH80 - 4in DIA
38	21.0 ft	70-SM0400P4	STILLING WELL - 4in PVC PIPE - PERFORATED
39	1	74-AD0400M	ADAPTER - PVC SCH80 - 4in - SLIP x MNPT
40	1	76-EL0490B0	ELBOW - PVC SCH80 - 4in x 90deg - SLIP
41	1	80-ACANCHOR	LEVEL SENSOR ANCHOR ASSEMBLY
42	1	80-F100PT00	DESSICANT FILTER - PRESSURE TRANSDUCER
43	4	80-FS20MSNL	FLOAT - 20m - MS1 - NOLTA
44	1	80-PT1500EH	PRESSURE TRANSDUCER - 0-15PSI - 60ft CABLE - E&H



NOTE: ALL DIMENSIONS AND ELEVATIONS SHOWN ARE NOMINAL DIMENSIONS. IT IS THE RESPONSIBILITY OF THE ON-SITE CONTRACTOR OR ROMTEC UTILITIES CUSTOMER (NOT ROMTEC UTILITIES) TO VERIFY THE ACCURACY OF ANY CRITICAL DIMENSIONS OR ELEVATIONS PRIOR TO SETTING OR INSTALLING ANY EQUIPMENT.

FOR PRODUCTION

REV	DATE	DESCRIPTION
4	9/13/2021	PRECAST UPLIFT COLLAR
3	8/13/2021	UPLIFT COLLAR DETAIL & NOTES
2	7/16/2021	PUMP CHANGE, LINDSAY PRECAST CONCRETE
1	6-29-21	ADD COMPONENT DRAWING, VENT HEIGHT, 16x12 REDUCERS

DATE: 6-29-21  
SCALE: 1" = 1'-0"



UNION PACIFIC RAILROAD  
ALTON & SOUTHER YARD, EAST ST. LOUIS, IL  
STORMWATER PUMP STATION  
COMPONENT DRAWING

MECHANICAL SHEET  
2 OF 3