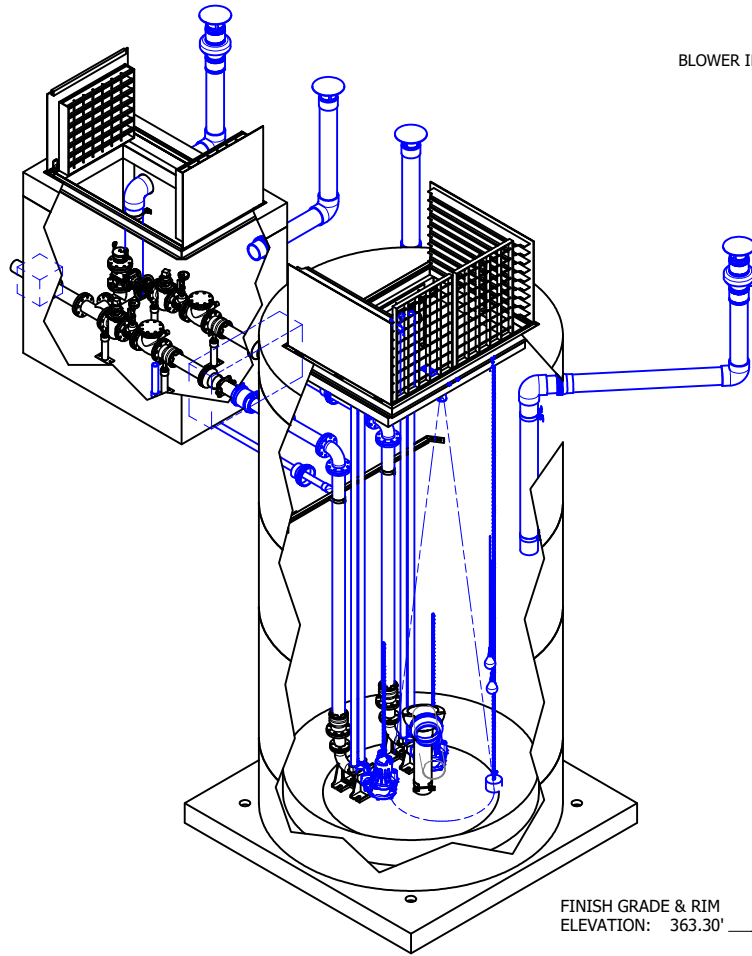


2.02 MECHANICAL PLANS

FOR CONSTRUCTION



ISO VIEW
SCALE 1 / 36

COATINGS:
WET WELL INTERIOR: TNEMEC 61
WET WELL EXTERIOR: TNEMEC 46H-413
WET WELL PIPING: TNEMEC 61

NOTE: ALL DIMENSIONS AND ELEVATIONS SHOWN ARE NOMINAL DIMENSIONS. IT IS THE RESPONSIBILITY OF THE ON-SITE CONTRACTOR OR ROMTEC UTILITIES CUSTOMER (NOT ROMTEC UTILITIES) TO VERIFY THE ACCURACY OF ANY CRITICAL DIMENSIONS OR ELEVATIONS PRIOR TO SETTING OR INSTALLING ANY EQUIPMENT.

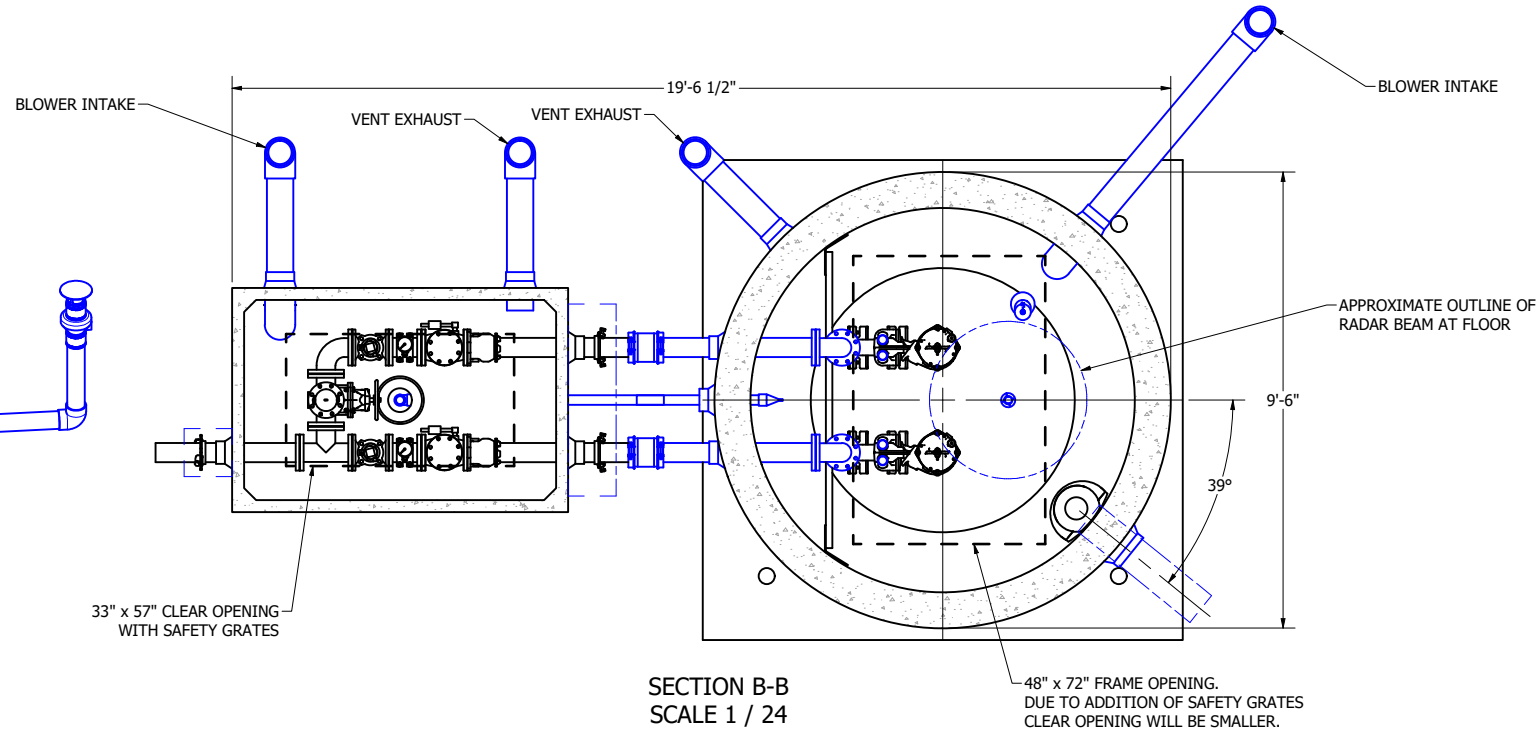
ALL MATERIALS SHOWN ON THIS SHEET WILL BE SUPPLIED BY ROMTEC UTILITIES AND DELIVERED TO THE SITE AFTER THE HOLE HAS BEEN EXCAVATED AND SHORED. THE CONTRACTOR SHALL SUPPLY A CRANE OF SUFFICIENT SIZE TO LOWER ALL THE CONCRETE PIECES INTO THE HOLE SAFELY. THE CONTRACTOR SHALL INSTALL THE WET WELL (AND VALVE VAULT AND METERING VAULT IF APPLICABLE). ROMTEC UTILITIES WILL PROVIDE A REPRESENTATIVE FOR TECHNICAL ASSISTANCE ON THE DAY OF INSTALLATION TO ANSWER ANY QUESTIONS THAT MAY ARISE. THE CONTRACTOR IS RESPONSIBLE FOR ALL PLUMBING AND ELECTRICAL CONNECTIONS AND INSTALLATION. ITEMS NOTED AS "BY OTHERS" WILL BE PROVIDED AND INSTALLED BY THE CONTRACTOR. ROMTEC UTILITIES WILL NOT INSTALL ANY OF THE COMPONENTS SHOWN ON THIS PAGE.

COLOR LEGEND

- MAJOR CONCRETE COMPONENTS WITH PRE-INSTALLED COMPONENTS.
- COMPONENTS PRE-ASSEMBLED TO THE EXTENT POSSIBLE AND WILL NEED TO BE FIELD INSTALLED.

NOTE: PRE-ASSEMBLY IS DONE AT ROMTEC UTILITIES' DISCRETION AND MAY CHANGE AT THE TIME OF PRODUCTION.

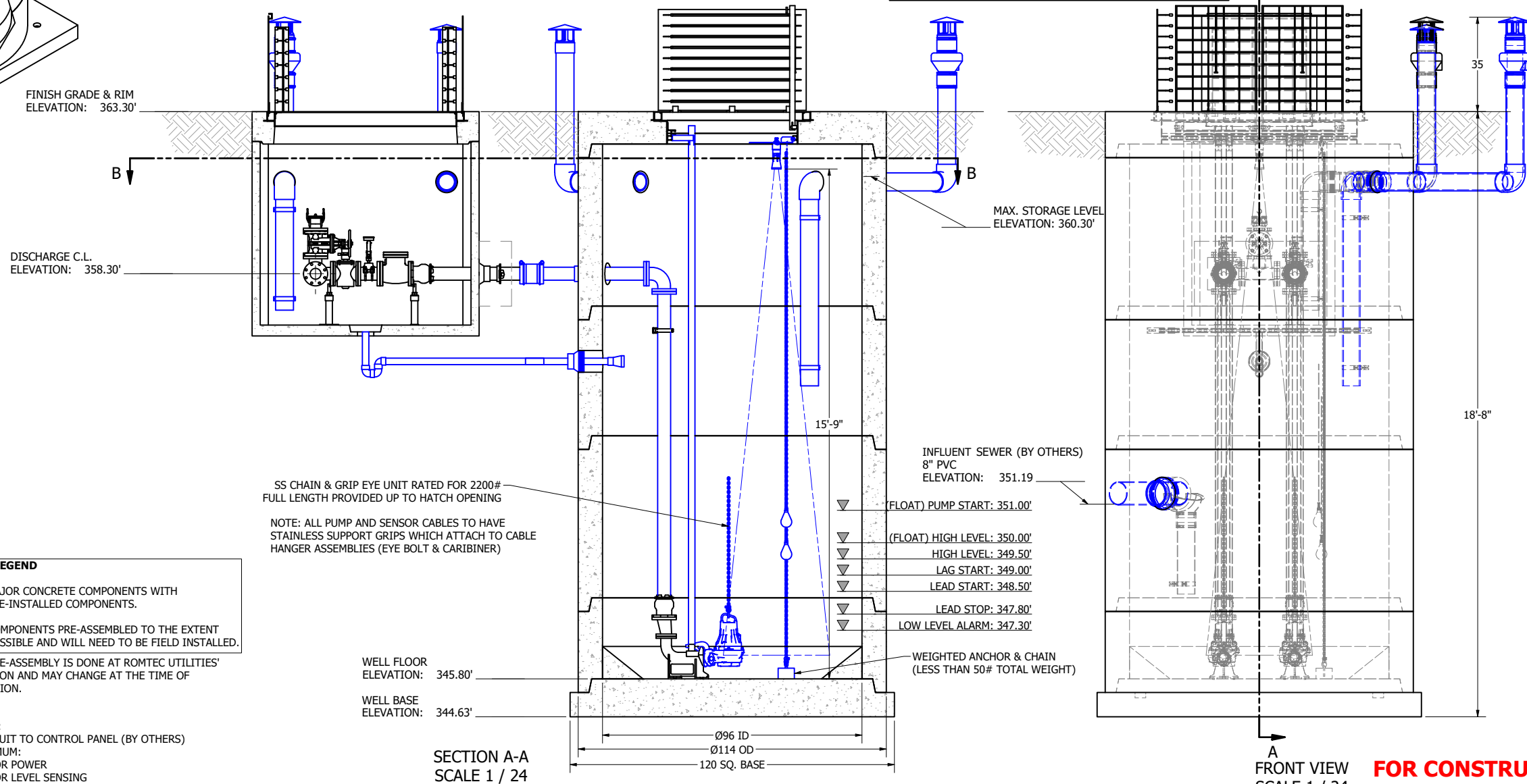
NOTE:
CONDUIT TO CONTROL PANEL (BY OTHERS)
MINIMUM:
(2) FOR POWER
(1) FOR LEVEL SENSING



SECTION B-B
SCALE 1 / 24

48" x 72" FRAME OPENING. DUE TO ADDITION OF SAFETY GRATES CLEAR OPENING WILL BE SMALLER.

NOTE: TOP SLAB AND HATCH ARE H-20 OCCASIONAL TRAFFIC RATED



SECTION A-A
SCALE 1 / 24

PUMP PACKAGE
CONFIGURATION: DUPLEX
MODEL: FLYGT NP3085SH #256 ADAPTIVE
HP: 4
DUTY POINT: 155 GPM AT 45 TDH

WELL FEATURES
ALUMINUM HATCH W/ SAFETY GRATES
4" D.I. DISCHARGE PIPES
RADAR TRANSDUCER
(2) FLOAT LEVEL SENSORS W/ WEIGHT & CHAIN
STAINLESS GUIDE RAILS
QUICK CONNECT DISCHARGE ELBOWS
PUMP LIFTING CHAIN & GRIP EYE UNIT
INLET DROP BOWL
BLOWER VENTILATION

VAULT FEATURES
577 VALVE VAULT
ALUMINUM HATCH W/ SAFETY GRATES
4" DUCTILE IRON VALVES & PIPING
PRESSURE GAUGES
PUMPING PORT W/ CAMLOCK
2" PVC SCH80 DRAIN
BLOWER VENTILATION

REV	DATE	DESCRIPTION	BY
5	8/25/2021	PRODUCTION LAUNCH	KB
4	7/28/2021	COMMENTS/CLARIFICATIONS	KB
3	6/11/2021	ANCHOR WEIGHT & CHAIN FOR FLOAT SENSORS	KB
2	5/17/2021	LEVEL SENSING MOUNTING DETAILS	KB
1	4-8-21	SITE ORIENTATION	KB

REV	DATE	DESCRIPTION	BY
0	2-25-21	DATE:	2-25-21

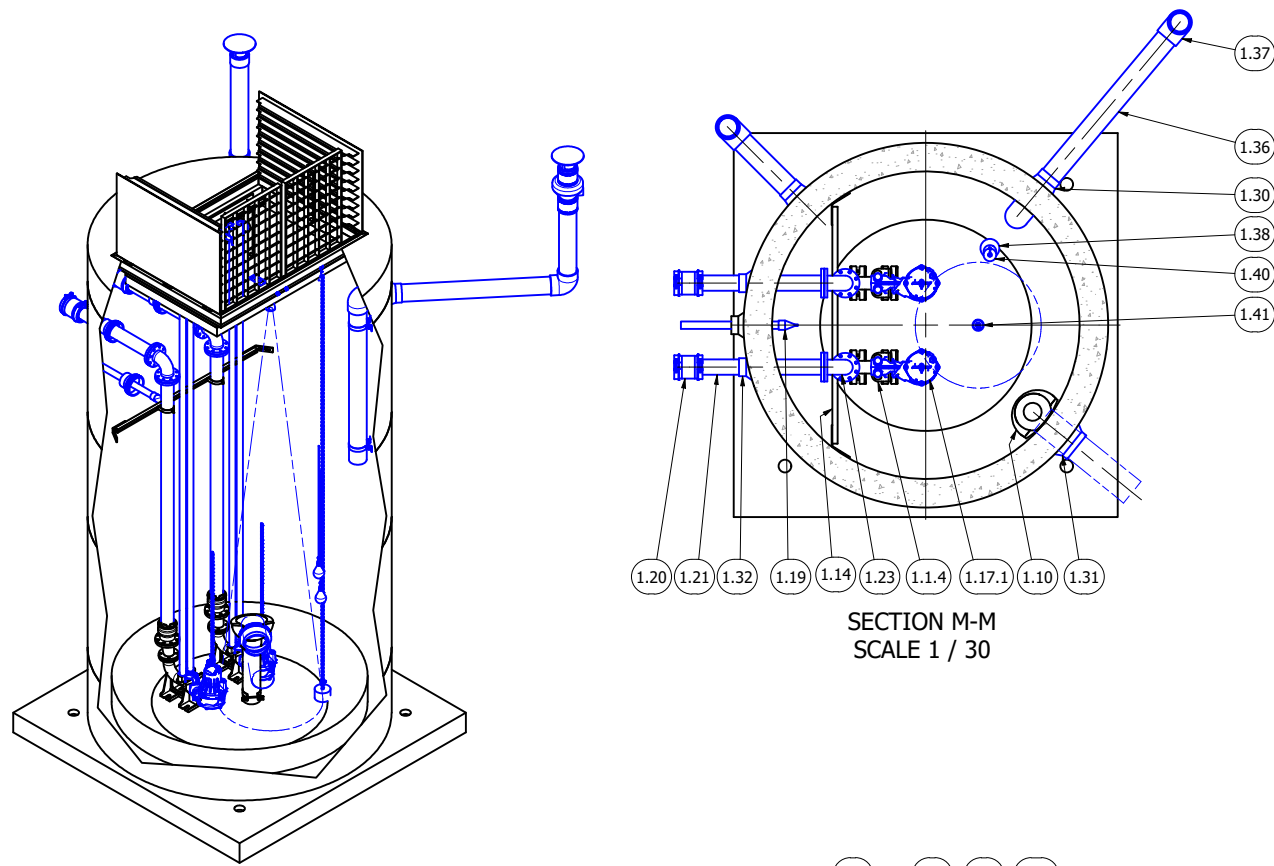
ROMTEC UTILITIES
18240 NORTH BANK ROAD
ROSEBURG, OREGON 97470
PHONE: (541) 496-9678
WWW.ROMTECUTILITIES.COM

BELLA CRESTA
MARYSVILLE, WA
WASTEWATER PUMP STATION
LAYOUT DRAWING



© 2020 ROMTEC INC. ALL RIGHTS RESERVED. THESE PLANS AND DRAWINGS MAY NOT BE REPRODUCED, ADAPTED, OR FURTHER DISTRIBUTED, AND NO COMPONENTS MAY BE CONSTRUCTED FROM THESE PLANS, WITHOUT WRITTEN PERMISSION OF ROMTEC, INC.

FOR CONSTRUCTION



SECTION M-M
SCALE 1 / 30

COLOR LEGEND

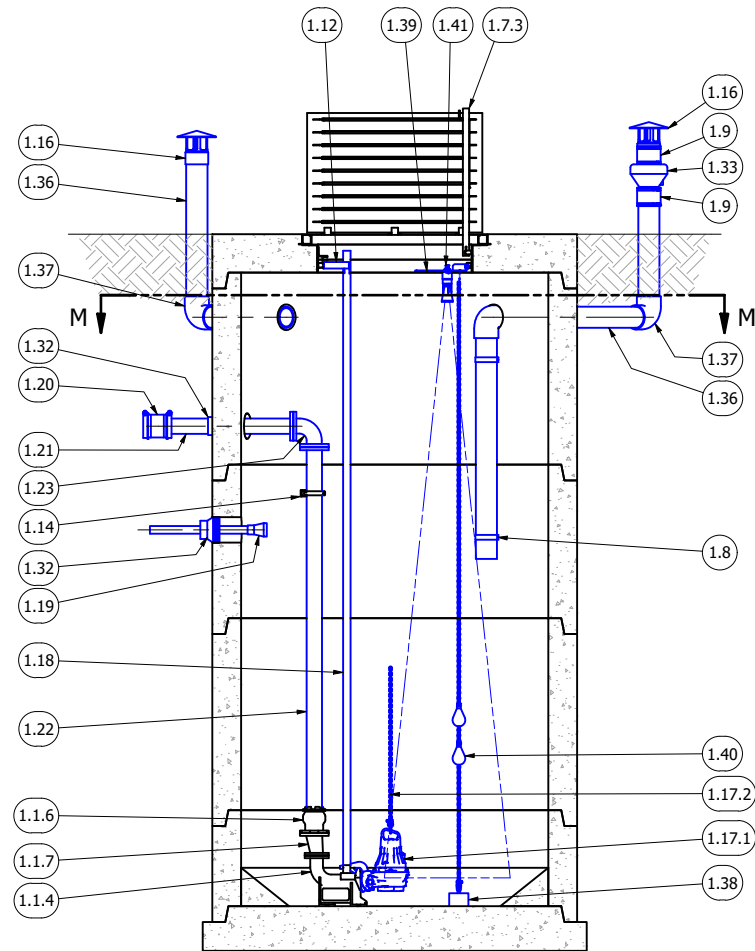
- MAJOR CONCRETE COMPONENTS WITH PRE-INSTALLED COMPONENTS.
- COMPONENTS PRE-ASSEMBLED TO THE EXTENT POSSIBLE AND WILL NEED TO BE FIELD INSTALLED.

NOTE: PRE-ASSEMBLY IS DONE AT ROMTEC UTILITIES' DISCRETION AND MAY CHANGE AT THE TIME OF PRODUCTION.

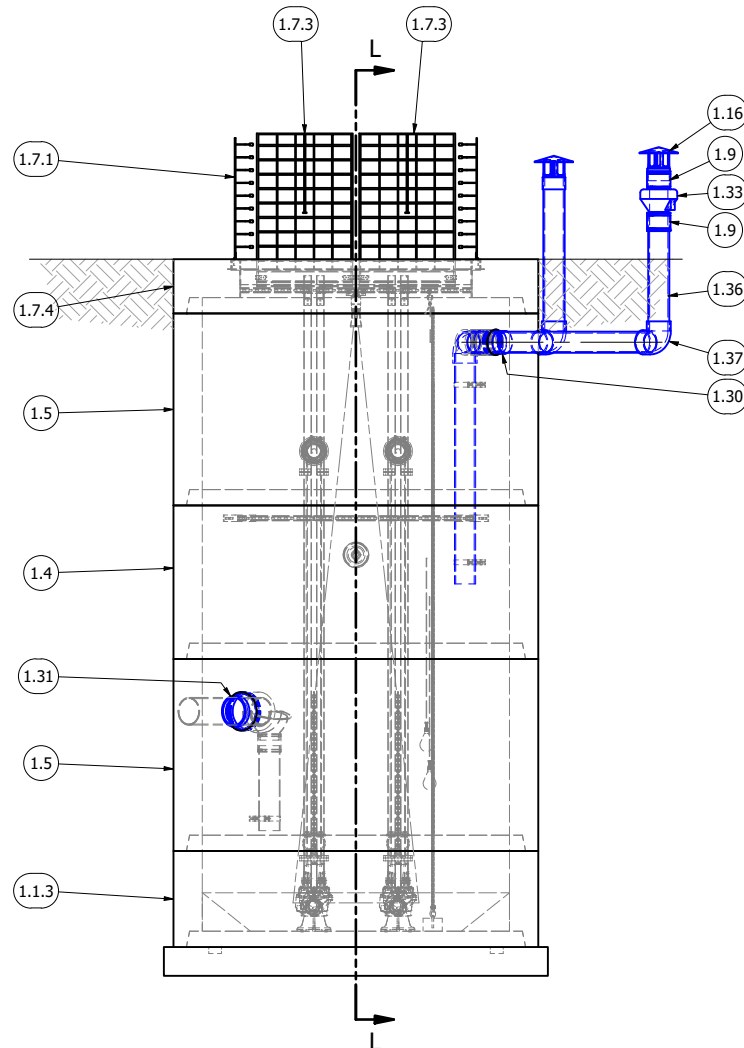
ALL MATERIALS SHOWN ON THIS SHEET WILL BE SUPPLIED BY ROMTEC UTILITIES AND DELIVERED TO THE SITE AFTER THE HOLE HAS BEEN EXCAVATED AND SHORED. THE CONTRACTOR SHALL SUPPLY A CRANE OF SUFFICIENT SIZE TO LOWER ALL THE CONCRETE PIECES INTO THE HOLE SAFELY. THE CONTRACTOR SHALL INSTALL THE WET WELL (AND VALVE VAULT AND METERING VAULT IF APPLICABLE). ROMTEC UTILITIES WILL PROVIDE A REPRESENTATIVE FOR TECHNICAL ASSISTANCE ON THE DAY OF INSTALLATION TO ANSWER ANY QUESTIONS THAT MAY ARISE. THE CONTRACTOR IS RESPONSIBLE FOR ALL PLUMBING AND ELECTRICAL CONNECTIONS AND INSTALLATION. ITEMS NOTED AS "BY OTHERS" WILL BE PROVIDED AND INSTALLED BY THE CONTRACTOR. ROMTEC UTILITIES WILL NOT INSTALL ANY OF THE COMPONENTS SHOWN ON THIS PAGE.



© 2020 ROMTEC INC. ALL RIGHTS RESERVED. THESE PLANS AND DRAWINGS MAY NOT BE REPRODUCED, ADAPTED, OR FURTHER DISTRIBUTED, AND NO COMPONENTS MAY BE CONSTRUCTED FROM THESE PLANS, WITHOUT WRITTEN PERMISSION OF ROMTEC, INC.



SECTION L-L
SCALE 1 / 30



PARTS LIST				
ITEM	QTY	STOCK NUMBER	DESCRIPTION	
1.1	1	10-CB000000	BASE SLAB ASSEMBLY	
1.1.1	1	10-CB08UPCP	BASE - WW - 8ft DIA x 12in - 10ftx10ft UPLIFT	
1.1.2	1	10-GR080000	GROUT RING - 8ft DIA	
1.1.3	1	12-CR0830CP	BARREL - 8ft DIA x 2.5ft H	
1.1.4	2	31-EL0300FL	DISCHARGE ELBOW - 3in - FLYGT	
1.1.5	2	31-HW00AKS6	ANCHOR KIT - 316SS - DISCHARGE ELBOW	
1.1.6	2	44-AD04RMAL	FLANGE ADAPTER - 4in - ALPHA	
1.1.7	2	48-RD0403DE	REDUCER - DI - 4in x 3in - ECCENTRIC	
1.1.8	2	49-GS030000	GASKET - FLANGE - 3in	
1.2	1	11-LC0800EX	COATING - EXTERIOR - 8ft DIA	
1.3	1	11-LC0800IN	COATING - INTERIOR - 8ft DIA	
1.4	1	12-CR0848CP	BARREL - 8ft DIA x 4ft H	
1.5	2	12-CR0860CP	BARREL - 8ft DIA x 5ft H	
1.6	1	13-KY000000	HATCH KEY	
1.7	1	14-CT000000	TOP SLAB ASSEMBLY	
1.7.1	1	13-HH999999	HATCH - H20 - 48in x 72in - DOUBLE LEAF	
1.7.3	2	13-SG999999	SAFETY GRATE - 30in WIDE x 48in OPENING	
1.7.4	1	14-CT08HDPC	TOP SLAB - 8ft DIA - H20 - DUPLEX	
1.7.5	12.0 ft	50-US0000S6	UNISTRUT - 316SS - SLOTTED	
1.8	3	15-BR06SS35	BRACKET - 316SS - 6in PIPE	
1.9	3	15-CP060000	COUPLING - FERNCO - 6in	
1.10	1	15-DB410668	DROP BOWL - 8in INLET x 6in OUTLET - 8ft WELL	
1.11	2	17-AC38000B	BOLT KIT - UPPER GUIDE BAR BRACKET	
1.12	2	17-UG0200FL	BRACKET - 316SS - UPPER GUIDE BAR - 2in	
1.13	5	18-AC00CH00	CABLE HANGER ASSEMBLY - 316SS	
1.14	1	18-BR000000	BRACKET ASSEMBLY - 316SS - DISCHARGE SUPPORT	
1.15	4	18-HD080000	LIFTING CLUTCH - 8 TON	
1.16	2	18-VT060WCA	VENT - 6in PVC - WEATHER CAP	
1.17	1	30-PU000000	PUMP SHIPPING CRATE	
1.17.1	2	30-PU0000FL	PUMP - FLYGT NP3085SH 4HP - 3in	
1.17.2	2	32-AC0000FL	PUMP LIFTING SLING - 316SS	
1.17.3	2	32-CGSS000D	CABLE SUPPORT GRIP - 304SS - 0.75in-0.99in	
1.17.4	1	32-PLGE0000	GRIP EYE UNIT	
1.18	64.0 ft	40-PP0200S6	PIPE - 316SS SCH40 - 2in DIA	
1.19	1	42-TF020000	CHECK VALVE - TIDEFLEX - 2in	
1.20	2	44-CP040AD0	COUPLING - 4in - ROMAC ALPHA	
1.21	2	45-FP040420	SPOOL - DI - 4in DIA x 42in - FLGxPE	
1.22	2	45-FP041200	SPOOL - DI - 4in DIA x 120in - FLGxPE	
1.23	2	46-EL0490DI	ELBOW - DI - 4in x 90deg - FLGxFLG	
1.24	4	49-GS040000	GASKET - FLANGE - 4in	
1.25	1	51-AC00NSTB	NEVER SIEZE - TUBE	
1.26	120 ft	51-JWCS2120	JOINT WRAP - 12in - CONSEAL CS-212	
1.27	120 ft	51-SECS2315	SEALANT - 1in x .75in - CONSEAL CS-231	
1.28	1	51-SECS1800	SEALANT - BUCKET - CONSEAL CS-1800	
1.29	1	51-SECS1900	SEALANT - TUBE - CONSEAL CS-1900	
1.30	2	59-KB0806P0	KOR-N-SEAL - 8in CORE x 6in PVC PIPE	
1.31	1	59-KB1208P0	KOR-N-SEAL - 12in CORE x 8in PVC PIPE	
1.32	3	59-KB080400	KOR-N-SEAL - 8in CORE - 4in thru 1.5in PIPE	
1.33	1	62-FN06FR15	DUCT FAN - 6in INLINE	
1.34	2.7 ft	70-PP0200P8	PIPE - PVC SCH80 - 2in DIA	
1.35	2.2 ft	70-PP0600DR	PIPE - PVC SDR35 - 6in DIA	
1.36	22.0 ft	70-PP0600P8	PIPE - PVC SCH80 - 6in DIA	
1.37	3	76-EL069000	ELBOW - PVC SCH80 - 6in x 90deg - SLIP	
1.38	1	80-ACANCHOR	LEVEL SENSOR ANCHOR ASSEMBLY	
1.39	1	80-BR0100S6	SENSOR HANGING BRACKET - 316SS	
1.40	2	80-FS20MSNL	FLOAT - 20m - MS1 - NOLTA	
1.41	1	80-RDFMR20E	RADAR - MICROPILOT FMR20 - E&H	

COATINGS:
WET WELL INTERIOR: TNE MEC 61
WET WELL EXTERIOR: TNE MEC 46H-413
WET WELL PIPING: TNE MEC 61

NOTE: ALL DIMENSIONS AND ELEVATIONS SHOWN ARE NOMINAL DIMENSIONS. IT IS THE RESPONSIBILITY OF THE ON-SITE CONTRACTOR OR ROMTEC UTILITIES CUSTOMER (NOT ROMTEC UTILITIES) TO VERIFY THE ACCURACY OF ANY CRITICAL DIMENSIONS OR ELEVATIONS PRIOR TO SETTING OR INSTALLING ANY EQUIPMENT.

FOR CONSTRUCTION

REV	DATE	DESCRIPTION
5	8/25/2021	PRODUCTION LAUNCH
4	7/28/2021	COMMENTS/CLARIFICATIONS
3	6/11/2021	ANCHOR WEIGHT & CHAIN FOR FLOAT SENSORS
2	5/17/2021	LEVEL SENSING MOUNTING DETAILS
1	4-8-21	SITE ORIENTATION

VERIFY SCALE	DATE	BY
0	8-25-21	KB

ROMTEC UTILITIES
18240 NORTH BANK ROAD
ROSEBURG, OREGON 97470
PHONE: (541) 496-9678
WWW.ROMTECUTILITIES.COM

BELLA CRESTA
MARYSVILLE, WA
WET WELL ASSEMBLY
COMPONENT DRAWING
MECHANICAL SHEET
2 OF 5