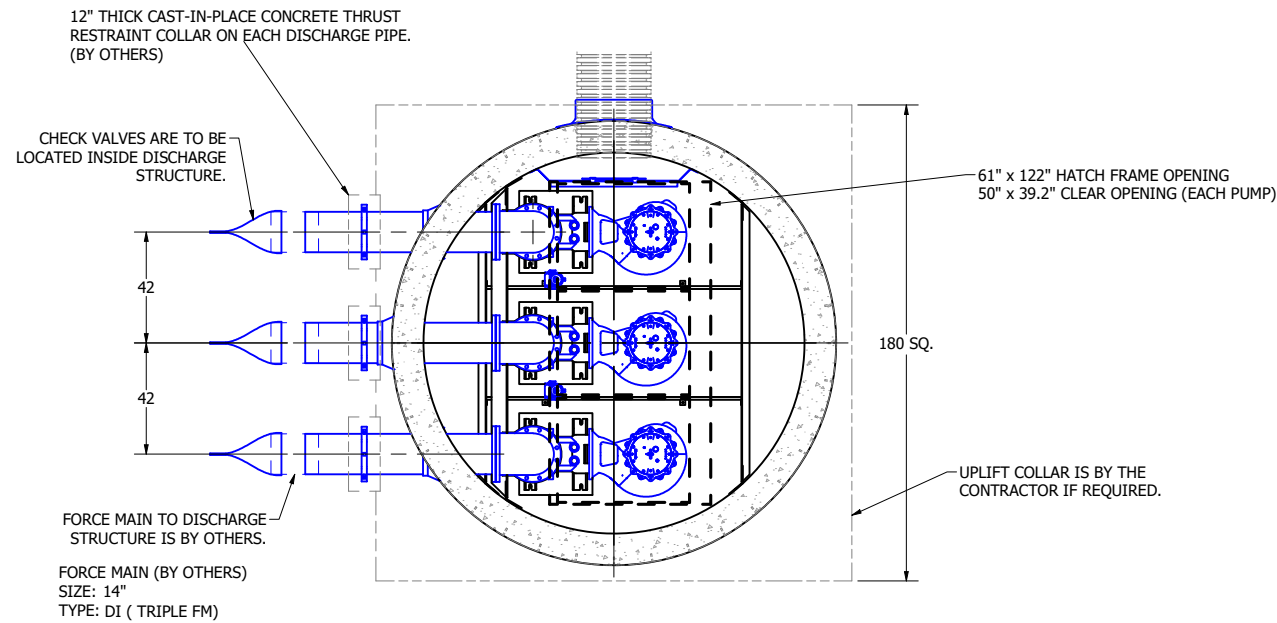
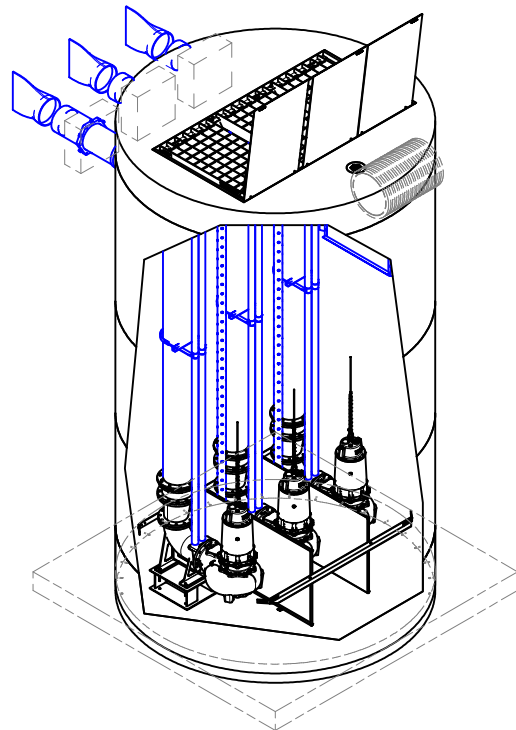


# 2.02 MECHANICAL PLANS

**FOR PRODUCTION**



SECTION B-B  
SCALE 1 / 36

**NOTE: TOP SLAB AND HATCH ARE  
H-20 LOW-SPEED\* TRAFFIC RATED**

\*LOW SPEED TRAFFIC: 15 MPH AND LOWER

## PUMP PACKAGE

CONFIGURATION: TRIPLEX  
MODEL: KEEN K12VK  
HP: 25  
DUTY POINT: 3639 GPM AT 20.3ft TDH

## FEATURES

- H2O HATCH
- DUCTILE IRON PIPING, 14"
- TIDE FLEX CHECK VALVES, 14"
- (2) PRESSURE TRANSDUCER, LEVEL CONTROL
- STAINLESS INLET DIFFUSER PANEL
- STAINLESS GUIDE RAILS
- QUICK CONNECT DISCHARGE ELBOWS
- STAINLESS PUMP DIVIDER BAFFLES

12" DIAMETER WET WELL  
14" DISCHARGE PIPING  
TRIPLEX KEEN PUMPS  
14" TIDEFLEX CHECK VALVES

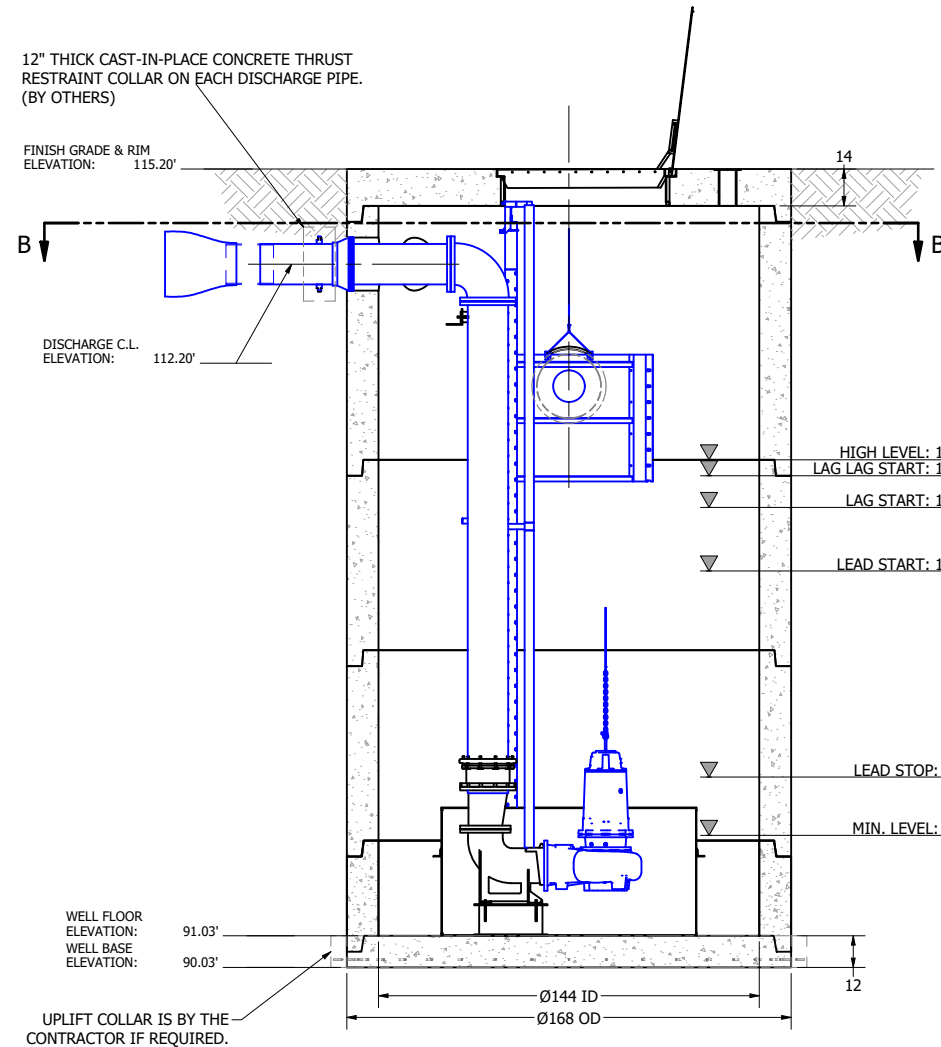
- COLOR LEGEND**
- MAJOR CONCRETE COMPONENTS WITH PRE-INSTALLED COMPONENTS.
  - COMPONENTS PRE-ASSEMBLED TO THE EXTENT POSSIBLE AND WILL NEED TO BE FIELD INSTALLED.

NOTE: PRE-ASSEMBLY IS DONE AT ROMTEC UTILITIES' DISCRETION AND MAY CHANGE AT THE TIME OF PRODUCTION.

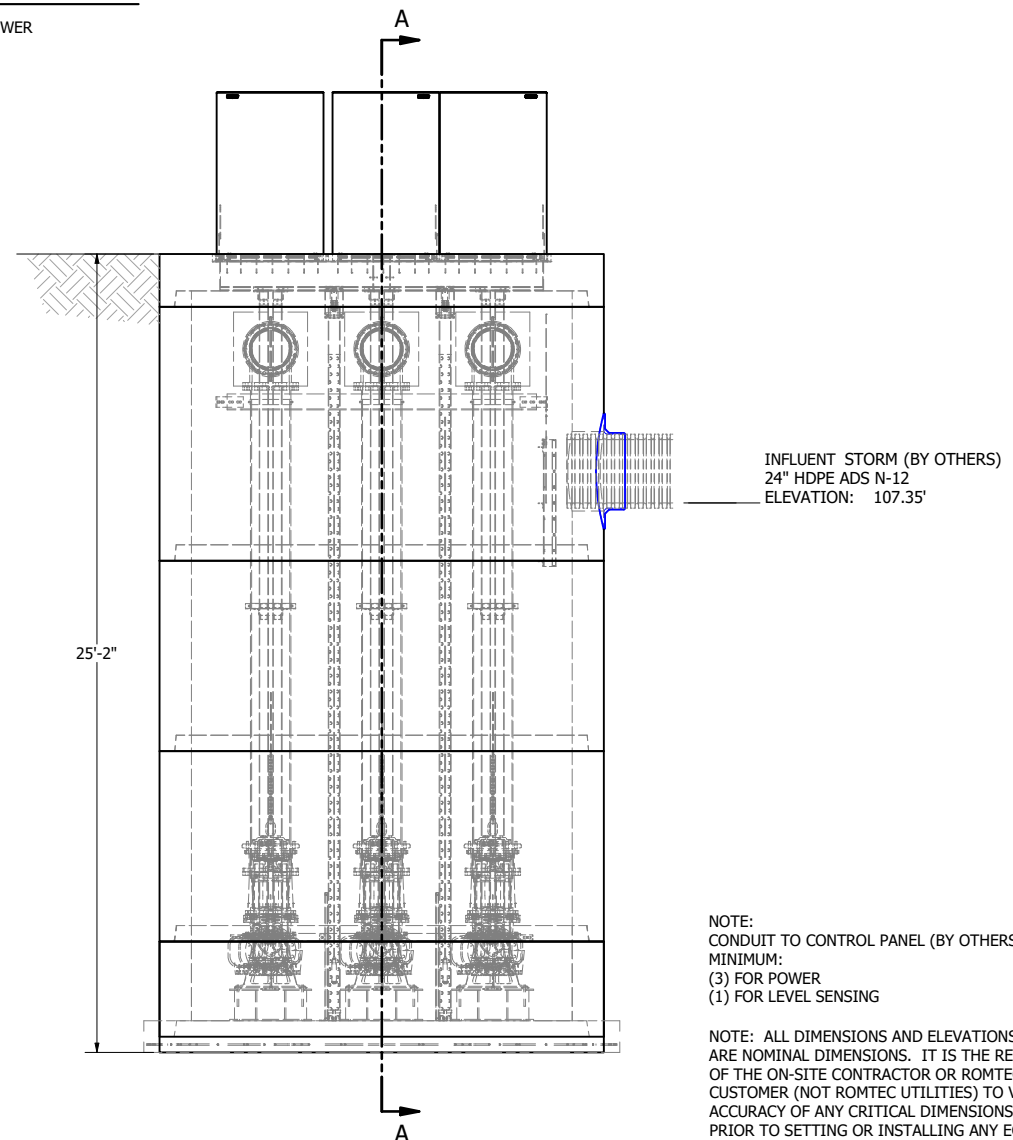
ALL MATERIALS SHOWN ON THIS SHEET WILL BE SUPPLIED BY ROMTEC UTILITIES AND DELIVERED TO THE SITE AFTER THE HOLE HAS BEEN EXCAVATED AND SHORED. THE CONTRACTOR SHALL SUPPLY A CRANE OF SUFFICIENT SIZE TO LOWER ALL THE CONCRETE PIECES INTO THE HOLE SAFELY. THE CONTRACTOR SHALL INSTALL THE WET WELL (AND VALVE VAULT AND METERING VAULT IF APPLICABLE). ROMTEC UTILITIES WILL PROVIDE A REPRESENTATIVE FOR TECHNICAL ASSISTANCE ON THE DAY OF INSTALLATION TO ANSWER ANY QUESTIONS THAT MAY ARISE. THE CONTRACTOR IS RESPONSIBLE FOR ALL PLUMBING AND ELECTRICAL CONNECTIONS AND INSTALLATION. ITEMS NOTED AS "BY OTHERS" WILL BE PROVIDED AND INSTALLED BY THE CONTRACTOR. ROMTEC UTILITIES WILL NOT INSTALL ANY OF THE COMPONENTS SHOWN ON THIS PAGE.



© 2020 ROMTEC INC. ALL RIGHTS RESERVED. THESE PLANS AND DRAWINGS MAY NOT BE REPRODUCED, ADAPTED, OR FURTHER DISTRIBUTED, AND NO COMPONENTS MAY BE CONSTRUCTED FROM THESE PLANS, WITHOUT WRITTEN PERMISSION OF ROMTEC, INC.



SECTION A-A  
SCALE 1 / 36



NOTE:  
CONDUIT TO CONTROL PANEL (BY OTHERS)  
MINIMUM:  
(3) FOR POWER  
(1) FOR LEVEL SENSING

NOTE: ALL DIMENSIONS AND ELEVATIONS SHOWN ARE NOMINAL DIMENSIONS. IT IS THE RESPONSIBILITY OF THE ON-SITE CONTRACTOR OR ROMTEC UTILITIES CUSTOMER (NOT ROMTEC UTILITIES) TO VERIFY THE ACCURACY OF ANY CRITICAL DIMENSIONS OR ELEVATIONS PRIOR TO SETTING OR INSTALLING ANY EQUIPMENT.

VERIFY SCALE	DATE	DESCRIPTION	BY
0	3-19-21	BASIC DESIGN REVIEW	KB
1		REVISION	BY

**ROMTEC UTILITIES**  
18240 NORTH BANK ROAD  
ROSEBURG, OREGON 97470  
PHONE: (541) 496-9678  
WWW.ROMTECUTILITIES.COM

HAMPTON PARK  
CAPITOL HEIGHTS, MD  
STORMWATER PUMP STATION  
BASIC DESIGN DRAWING  
MECHANICAL SHEET  
1 OF 3

**FOR PRODUCTION**