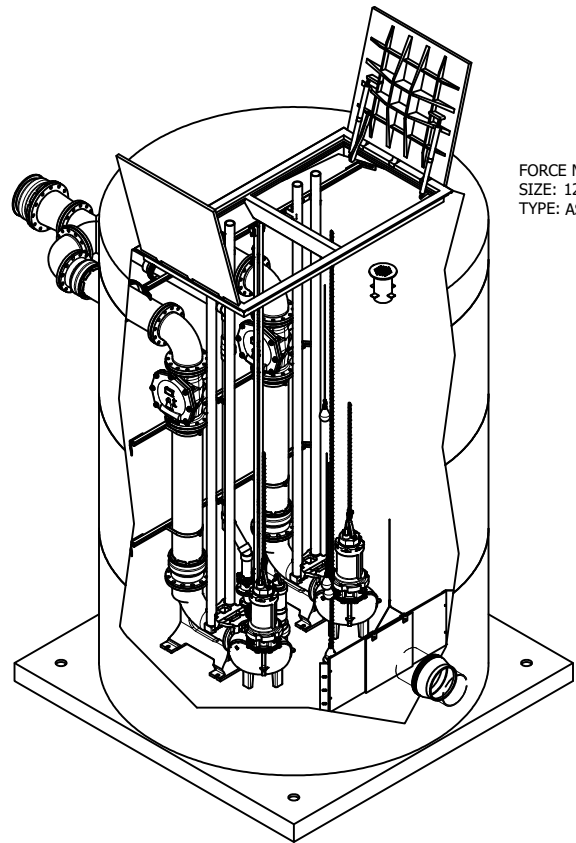
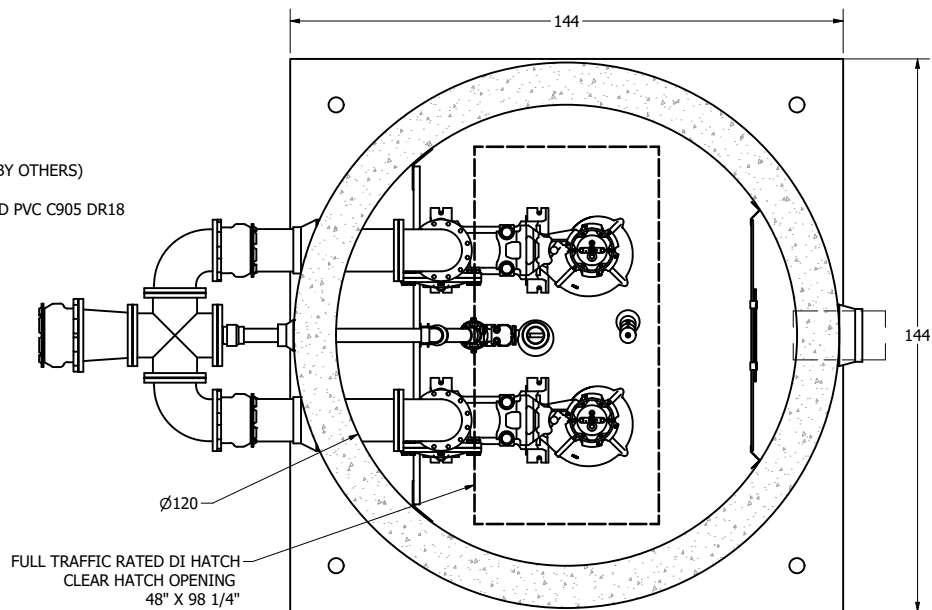


FOR CONSTRUCTION



FORCE MAIN (BY OTHERS)
 SIZE: 12"
 TYPE: ASSUMED PVC C905 DR18



PRIMARY SENSOR ELEVATION TABLE		Δ
DESCRIPTION	ELEVATION	
INFLUENT INVERT	568.24'	6.30'
HIGH LEVEL ALARM	576.33'	
LAG PUMP START	N/A	0.40'
LEAD PUMP START	570.03'	
PUMP STOP	569.63'	3.00'
WELL FLOOR	566.63'	

MISC. ELEVATION TABLE	
DESCRIPTION	ELEVATION
JOCKEY PUMP START	569.63'
JOCKEY PUMP STOP	567.30'

PUMP PACKAGE
 CONFIGURATION: DUPLEX
 MODEL: 250DLBFU615
 HP: 20HP
 DUTY POINT: 1958GPM @ 16.9TDH

FEATURES
 HATCH: FULL TRAFFIC (DUCTILE IRON)
 DISCHARGE PIPING: 10" DI, 12" DI, & 3" SCH80 PVC
 PRIMARY LEVEL SENSING: (4) FLOATS
 BACKUP LEVEL SENSING: N/A
 STAINLESS STEEL GUIDE RAILS
 QUICK CONNECT DISCHARGE ELBOWS
 JOCKEY PUMP: 50DLU6.75
 HORSEPOWER: 1HP
 DUTY POINT: 80GPM @ 22.6TDH

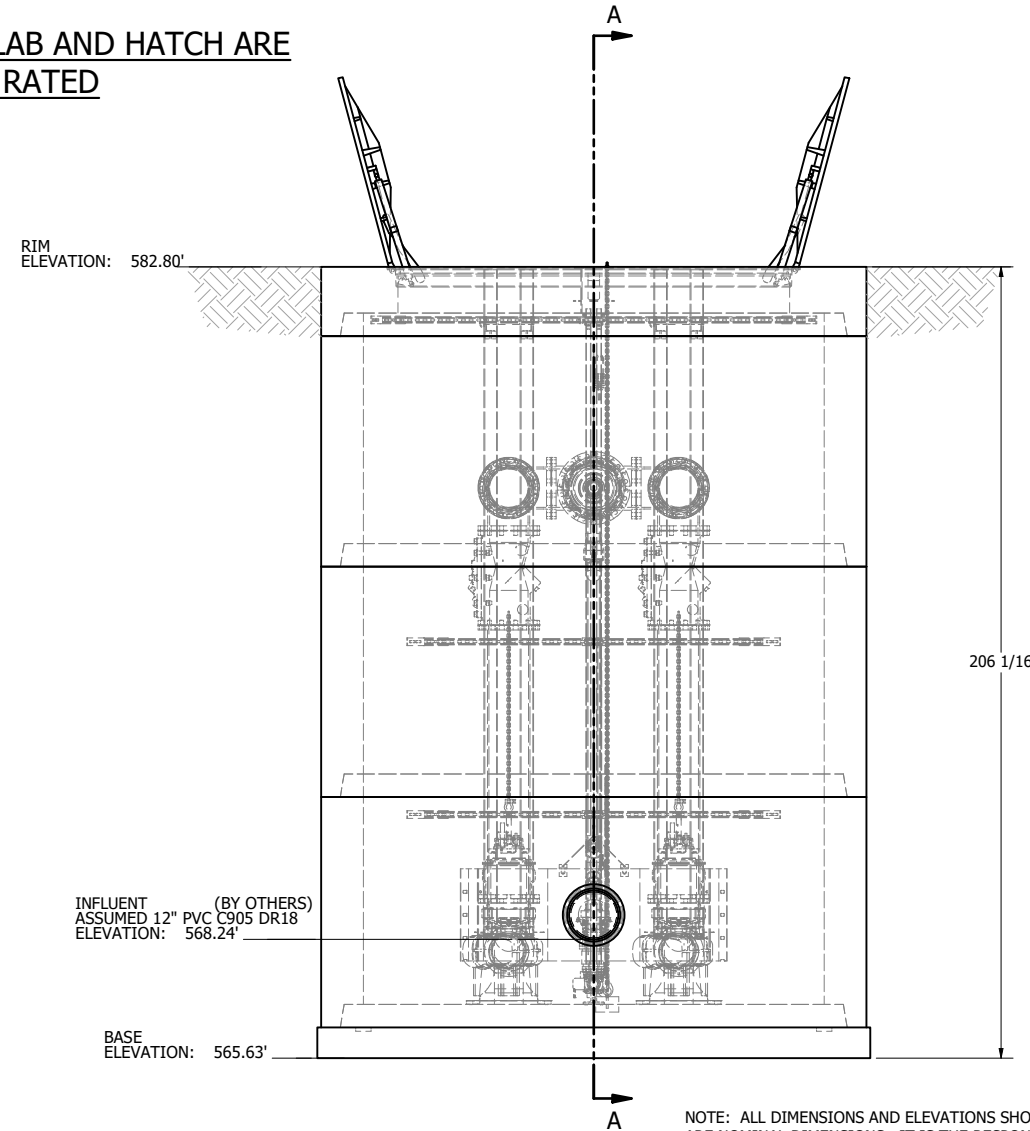
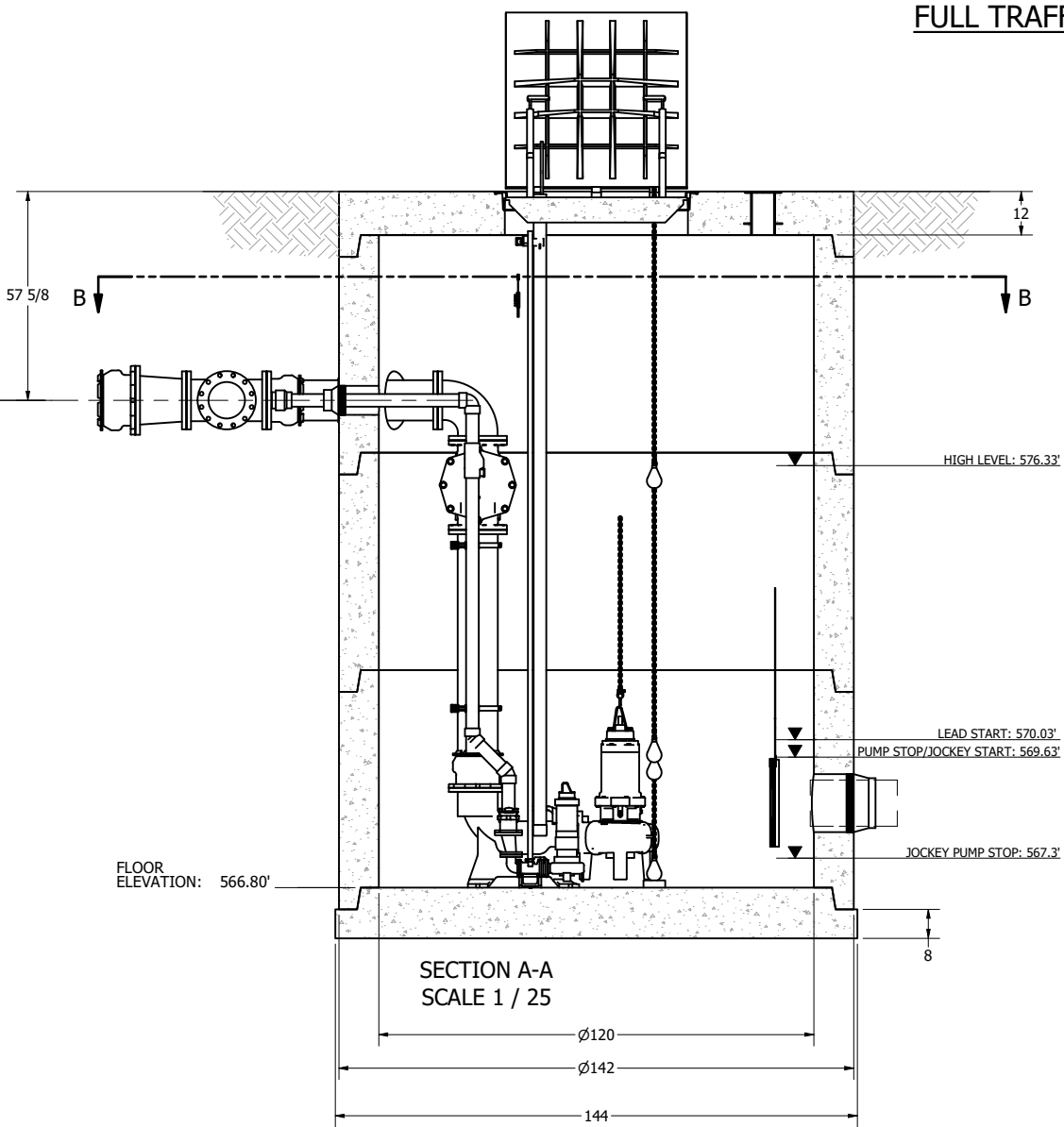
NOTE: TOP SLAB AND HATCH ARE FULL TRAFFIC RATED

NOTE:
 CONDUIT TO CONTROL PANEL (BY OTHERS)
 MINIMUM:
 (2) FOR POWER
 (1) FOR LEVEL SENSING

ALL MATERIALS SHOWN ON THIS SHEET WILL BE SUPPLIED BY ROMTEC UTILITIES AND DELIVERED TO THE SITE AFTER THE HOLE HAS BEEN EXCAVATED AND SHORED. THE CONTRACTOR SHALL SUPPLY A CRANE OF SUFFICIENT SIZE TO LOWER ALL THE CONCRETE PIECES INTO THE HOLE SAFELY. THE CONTRACTOR SHALL INSTALL THE WET WELL (AND VALVE VAULT AND METERING VAULT IF APPLICABLE). ROMTEC UTILITIES WILL PROVIDE A REPRESENTATIVE FOR TECHNICAL ASSISTANCE ON THE DAY OF INSTALLATION TO ANSWER ANY QUESTIONS THAT MAY ARISE. THE CONTRACTOR IS RESPONSIBLE FOR ALL PLUMBING AND ELECTRICAL CONNECTIONS AND INSTALLATION. ITEMS NOTED AS "BY OTHERS" WILL BE PROVIDED AND INSTALLED BY THE CONTRACTOR. ROMTEC UTILITIES WILL NOT INSTALL ANY OF THE COMPONENTS SHOWN ON THIS PAGE.



© 2022 ROMTEC INC. ALL RIGHTS RESERVED. THESE PLANS AND DRAWINGS MAY NOT BE REPRODUCED, ADAPTED, OR FURTHER DISTRIBUTED, AND NO COMPONENTS MAY BE CONSTRUCTED FROM THESE PLANS, WITHOUT WRITTEN PERMISSION OF ROMTEC, INC.



NOTE: ALL DIMENSIONS AND ELEVATIONS SHOWN ARE NOMINAL DIMENSIONS. IT IS THE RESPONSIBILITY OF THE ON-SITE CONTRACTOR OR ROMTEC UTILITIES CUSTOMER (NOT ROMTEC UTILITIES) TO VERIFY THE ACCURACY OF ANY CRITICAL DIMENSIONS OR ELEVATIONS PRIOR TO SETTING OR INSTALLING ANY EQUIPMENT.

REV	DATE	DESCRIPTION	RD	BY
0	3/15/22	PRELIM		

VERIFY SCALE
 0 1"
 DATE: 3/15/22

ROMTEC UTILITIES
 18240 NORTH BANK ROAD
 ROSEBURG, OREGON 97470
 PHONE: (541) 496-9678
 WWW.ROMTECUTILITIES.COM

PALOMINO RANCH
 NORCO, CA
 STORMWATER
 SYSTEM DRAWING

SHEET
 M2

FOR CONSTRUCTION