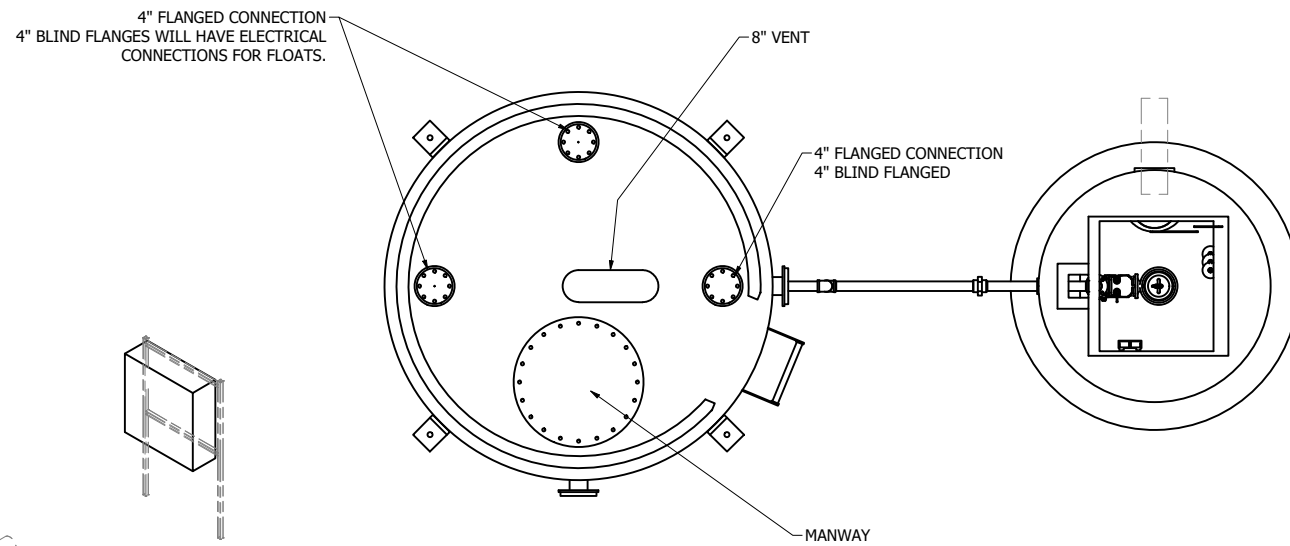
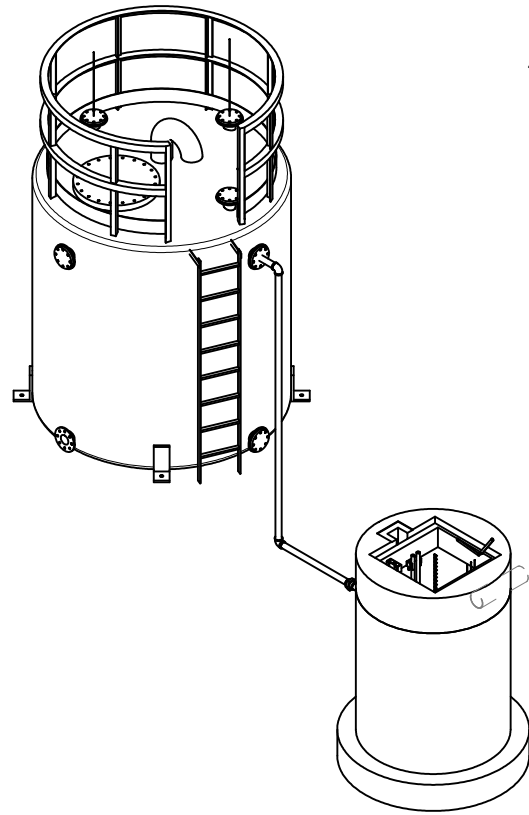


**FOR DESIGN REVIEW**



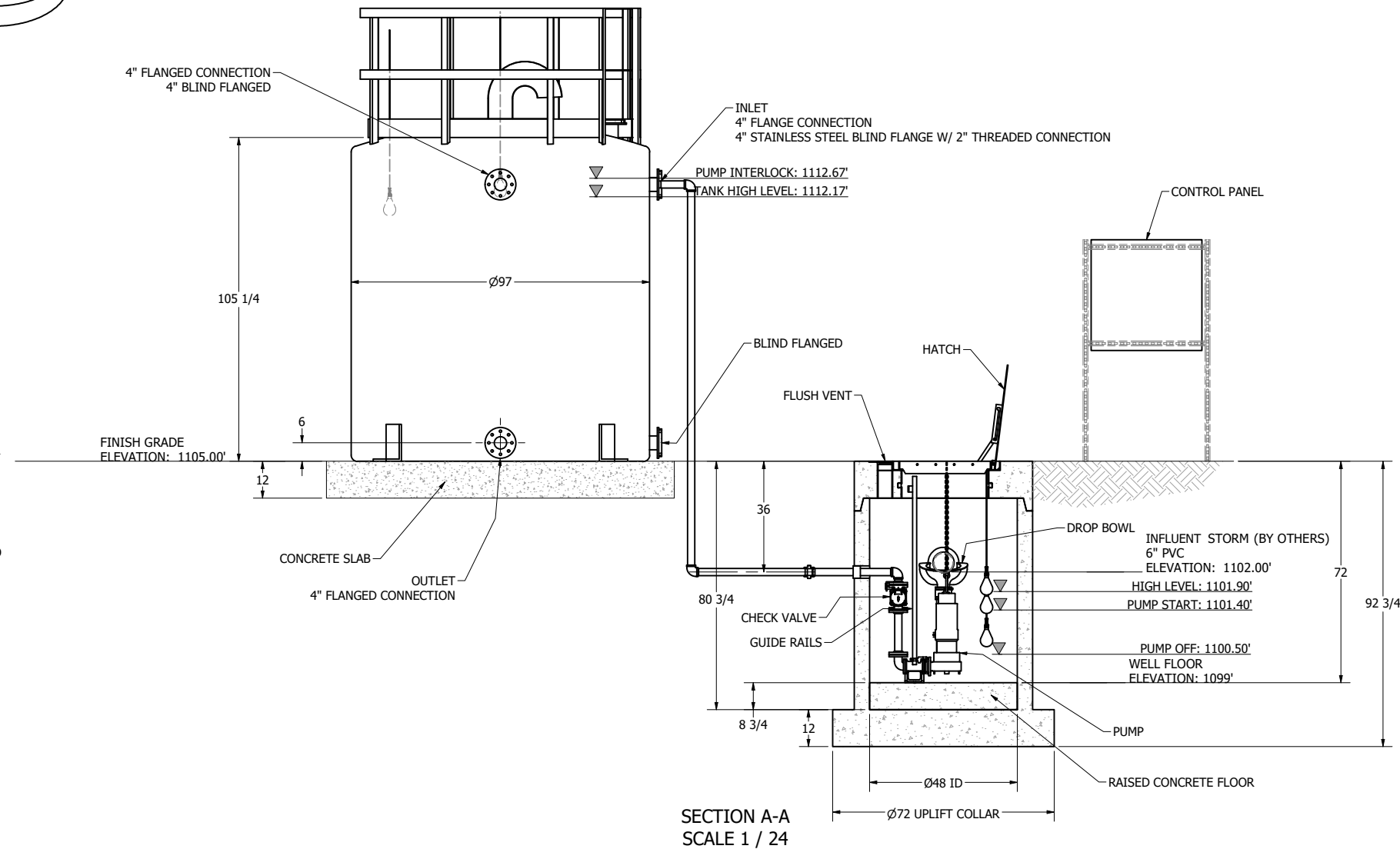
NOTE:  
CONDUIT TO CONTROL PANEL (BY OTHERS)  
MINIMUM:  
(1) FOR POWER  
(1) FOR LEVEL SENSING

NOTE: ALL DIMENSIONS AND ELEVATIONS SHOWN ARE NOMINAL DIMENSIONS. IT IS THE RESPONSIBILITY OF THE ON-SITE CONTRACTOR OR ROMTEC UTILITIES CUSTOMER (NOT ROMTEC UTILITIES) TO VERIFY THE ACCURACY OF ANY CRITICAL DIMENSIONS OR ELEVATIONS PRIOR TO SETTING OR INSTALLING ANY EQUIPMENT.

ALL MATERIALS SHOWN ON THIS SHEET WILL BE SUPPLIED BY ROMTEC UTILITIES AND DELIVERED TO THE SITE AFTER THE HOLE HAS BEEN EXCAVATED AND SHORED. THE CONTRACTOR SHALL SUPPLY A CRANE OF SUFFICIENT SIZE TO LOWER ALL THE CONCRETE PIECES INTO THE HOLE SAFELY. THE CONTRACTOR SHALL INSTALL THE WET WELL (AND VALVE VAULT AND METERING VAULT IF APPLICABLE). ROMTEC UTILITIES WILL PROVIDE A REPRESENTATIVE FOR TECHNICAL ASSISTANCE ON THE DAY OF INSTALLATION TO ANSWER ANY QUESTIONS THAT MAY ARISE. THE CONTRACTOR IS RESPONSIBLE FOR ALL PLUMBING AND ELECTRICAL CONNECTIONS AND INSTALLATION. ITEMS NOTED AS "BY OTHERS" WILL BE PROVIDED AND INSTALLED BY THE CONTRACTOR. ROMTEC UTILITIES WILL NOT INSTALL ANY OF THE COMPONENTS SHOWN ON THIS PAGE.



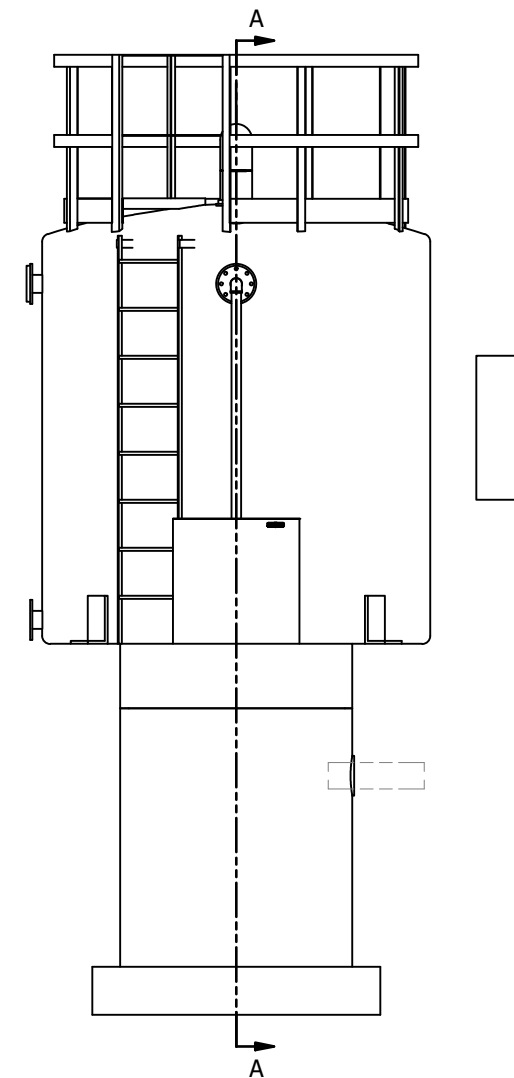
© 2021 ROMTEC INC. ALL RIGHTS RESERVED. THESE PLANS AND DRAWINGS MAY NOT BE REPRODUCED, ADAPTED, OR FURTHER DISTRIBUTED, AND NO COMPONENTS MAY BE CONSTRUCTED FROM THESE PLANS, WITHOUT WRITTEN PERMISSION OF ROMTEC, INC.



**PUMP PACKAGE**  
CONFIGURATION: SIMPLEX  
MODEL: ZOELLER FX282  
HP: 1/2 HP  
DUTY POINT: 55 GPM AT 16.5 TDH

**FEATURES**  
HATCH: H-20 OCCASIONAL TRAFFIC  
DISCHARGE PIPING: 2" STAINLESS  
WELL LEVEL SENSING: (3) FLOATS  
TANK LEVEL SENSING: (2) FLOATS  
STAINLESS STEEL GUIDE RAILS  
QUICK CONNECT DISCHARGE ELBOWS  
DUAL-WALL FRP TANK  
LINK SEAL MATERIAL: NITRILE  
2" STAINLESS STEEL FORCE MAIN

**COATINGS**  
WELL EXTERIOR: TNEMEC 61  
WELL INTERIOR: TNEMEC 61



|                |             |                  |
|----------------|-------------|------------------|
| VERIFY SCALE   | DATE        | BY               |
| 0              | 2/24/22     | RD               |
| 1"             |             | BY               |
| SSDS           | DESCRIPTION | REVISION HISTORY |
| DSN: KB        |             |                  |
| DRN: KB        |             |                  |
| CKD:           |             |                  |
| DATE: 12-15-21 |             |                  |

**ROMTEC UTILITIES**  
18240 NORTH BANK ROAD  
ROSEBURG, OREGON 97470  
PHONE: (541) 496-9678  
WWW.ROMTECUTILITIES.COM

UPRR WEST COLTON  
FONTANA, CA  
STORMWATER PUMP STATION  
SYSTEM DRAWING

**FOR DESIGN REVIEW**