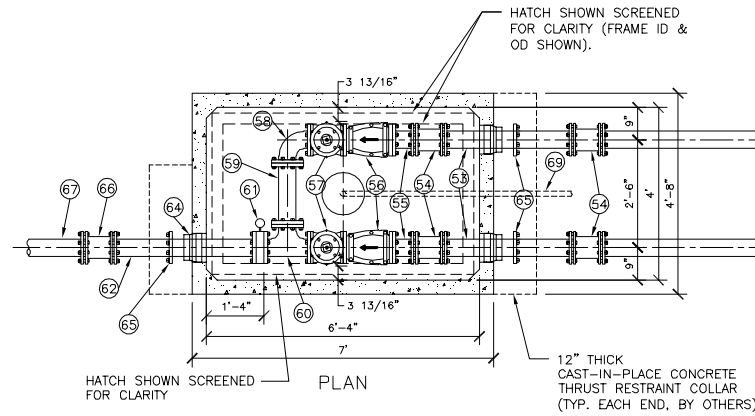
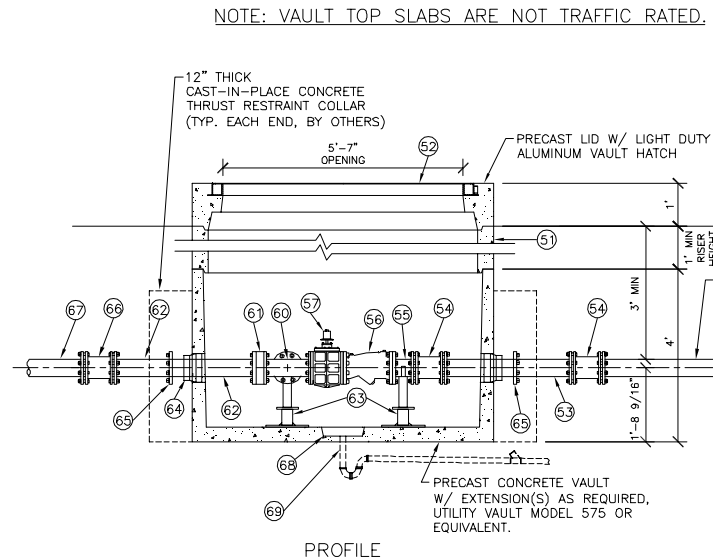


- Vault Design Notes:
1. ALL PIPING & VALVES WITHIN VAULT ARE 4 INCH DIAMETER.
 2. HATCH DESIGN LOADS: 700 LB/SQUARE FOOT.
 3. VALVES AND VAULT PIPING SYSTEM FACTORY TESTED TO 150 PSI AFTER ASSEMBLY.

SET NON-TRAFFIC RATED TOP SLABS A MINIMUM OF 12-INCHES ABOVE ADJACENT GRADE, OR INSTALL PIPE BOLLARDS AS REQUIRED FOR PROTECTION (TYPICAL FOR BOTH WETWELL & VALVE VAULT, BY OTHERS)

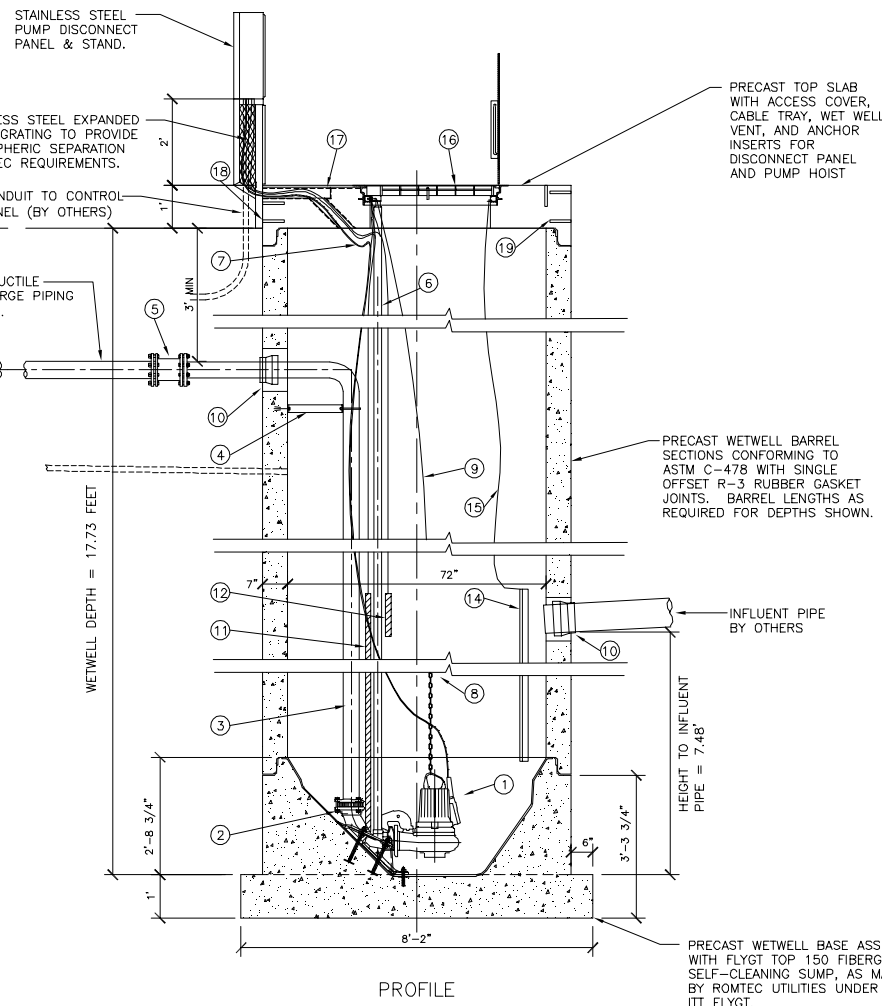
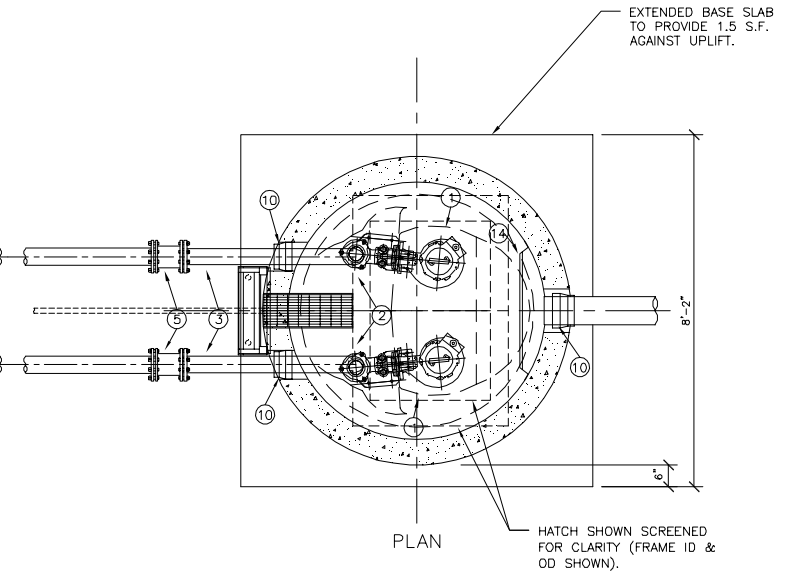


NOTE: VAULT TOP SLABS ARE NOT TRAFFIC RATED.



4" VALVE VAULT
SCALE: 1/2" = 1'-0"

NOTE: WETWELL TOP SLABS ARE NOT TRAFFIC RATED.



6" DIAMETER WETWELL
SCALE: 1/2" = 1'-0"

- 51 VAULT EXTENSION RISER(S), HEIGHT AS REQUIRED FOR PIPE COVER DEPTH SHOWN.
- 52 FLYGT ALUMINUM ACCESS HATCH PRECAST INTO VAULT TOP SLAB.
- 53 CL 52 DI PIPE SPOOL (PE x PE)
- 54 DI SLEEVE COUPLING, DI TO DI PIPE
- 55 DI PIPE SPOOL (FLG x PE)
- 56 FLANGED DI BODY SWING CHECK VALVE, APCO MODEL 104P3. PROVIDE ONE VALVE WITH BACKFLOW DEVICE.
- 57 ECCENTRIC PLUG VALVE W/2-INCH OPERATING NUT, DEZURIK MODEL PEC4.
- 58 DI 90° BEND (FLG x FLG)
- 59 DI PIPE SPOOL (FLG x FLG)
- 60 DI TEE (FLG x FLG)
- 61 WAFER STYLE DIAPHRAM PRESSURE SENSOR, RED VALVE SERIES 40.
- 62 DI PIPE SPOOL (FLG x PE)
- 63 ADJUSTABLE PIPE SUPPORT, STANDON (TYP OF 4).
- 64 VAULT SEAL, KOR-N-SEAL (TYP OF 3).
- 65 RETAINER GLAND CENTERED IN THRUST COLLAR, MEGALUG OR EQUIVALENT (TYP OF 3).
- 66 SLEEVE COUPLING, DI VAULT PIPING TO FORCE MAIN PIPING (BY OTHERS)
- 67 FORCE MAIN (BY OTHERS).
- 68 PRECAST VAULT SUMP FOR GRAVITY DRAIN TO APPROVED POINT.
- 69 GRAVITY DRAIN (BY OTHERS) CONNECT TO WET WELL AND PROVIDE CHECK VALVE OR FLAPPER VALVE TO PREVENT SEWAGE FROM BACKING UP INTO VALVE VAULT.

- 1 SUBMERSIBLE NON-CLOG SEWAGE PUMPS, FLYGT MODEL NP-3102 (463). PROVIDE ONE PUMP WITH MIX FLUSH VALVE.
- 2 4-INCH FLYGT DISCHARGE ELBOW.
- 3 STAINLESS STEEL DISCHARGE PIPING (SCHEDULE 40). PROVIDE ALL PIPE PENETRATION(S) WITH RUBBER BOOTS KOR-N-SEAL.
- 4 STAINLESS STEEL DISCHARGE PIPE ANCHOR BRACKET.
- 5 DI SLEEVE COUPLING, STAINLESS STEEL TO DI PIPING
- 6 TWO 2-INCH SCHEDULE 40 STAINLESS STEEL GUIDE BARS FOR EACH PUMP (FULL HEIGHT). ATTACH TO HATCH UNI-STRUT WITH FLYGT UPPER GUIDE BAR BRACKET.
- 7 PUMP POWER CABLE WITH QUICK CONNECT COUPLING AT PUMP DISCONNECT PANEL. PROVIDE EACH CABLE WITH A STAINLESS STEEL BASKET CABLE GRIP ATTACHED TO HOOK ON UPPER GUIDE BAR BRACKET.
- 8 STAINLESS STEEL CHAIN SLING FOR PUMP RETRIEVAL USING FLYGT GRIP-EYE. ATTACH TO PUMP LIFTING HANDLE.
- 9 STAINLESS STEEL 1/4" CHAIN (S4) ATTACHED TO PUMP HANDLE WITH BOW SHACKEL. ATTACH UPPER END OF CHAIN TO HOOK ON UPPER GUIDE BAR BRACKET.
- 10 WETWELL SEAL, KOR-N-SEAL OR EQUIVALENT.
- 11 PUMP LIQUID LEVEL CONTROL PROBE, FLYGT MULTI-TRODE PROBE.
PROBE LENGTH = 5 FEET (1.5 METERS)
NUMBER OF SENSORS = 10
SENSOR SPACING = 6-INCHES.
PROVIDE MULTITRODE MTKA-1 PROBE MOUNTING BRACKET MOUNTED TO HATCH UNI-STRUT.
- 12 REDUNDANT HIGH WATER ALARM PROBE AND REDUNDANT STATION CONTROL MULTI-TRODE THREE SENSOR PROBE. MOUNT ON MAIN PROBE MOUNTING BRACKET.
- 13 NOT USED.
- 14 HDPE INFLUENT DEFLECTOR WITH FULL SIZE INSPECTION HOLE AND GUILLOTINE COVER.
- 15 1/8" STAINLESS STEEL LIFTING CABLE FOR INFLUENT DEFLECTOR INSPECTION HOLE COVER. PERMANENTLY ATTACH UPPER END OF CABLE TO HATCH UNI-STRUT.
- 16 FLYGT ALUMINUM ACCESS HATCH PRECAST INTO WETWELL TOP SLAB. PROVIDE WITH SAFE-HATCH SAFETY GRATE BY FLYGT.
- 17 FRP CABLE TRAY AND WETWELL VENT PRECAST INTO WETWELL TOP SLAB. PROVIDE WITH REMOVABLE 1/2-INCH STAINLESS STEEL GRATING. GRATING TO BE MACHINED TO FIT UNDER THE EDGE OF THE WETWELL HATCH FRAME.
- 18 STAINLESS STEEL ANCHOR INSERTS FOR PUMP DISCONNECT PANEL.
- 19 STAINLESS STEEL ANCHOR INSERTS FOR PUMP DAVIT CRANE BASE.
- 20 NOT USED.

NO.	DATE	DESCRIPTION	BY
1	02/17/04	COMPONENT SUBMITTAL SHOP DRAWINGS	

VERIFY SCALE
BAR IS ONE INCH ON ORIGINAL DRAWING
IF NOT ONE INCH ON THIS SHEET, ADJUST SCALE ACCORDINGLY

DSN. JVB
DRN. JVB
CKD. -
DATE/FEB 2004

ROMTEC
18240 NORTH BANK ROAD
ROSEBURG, OR 97470
(541) 496-3541
FAX (541) 496-0803

CITY OF CAMAS, WA
ONE STOP L.S.
6" WETWELL
4" DISCHARGE & VAULT
FLYGT NP 3120 PUMPS