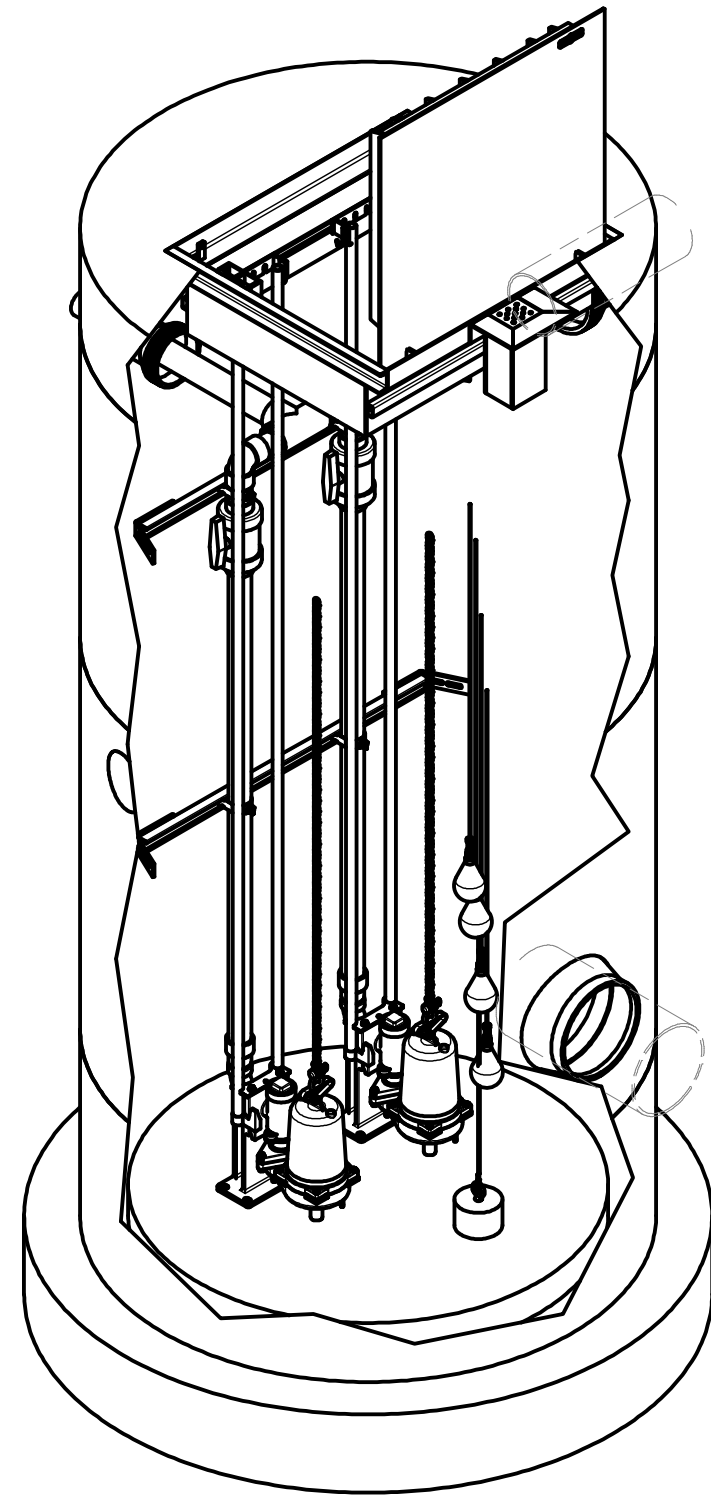
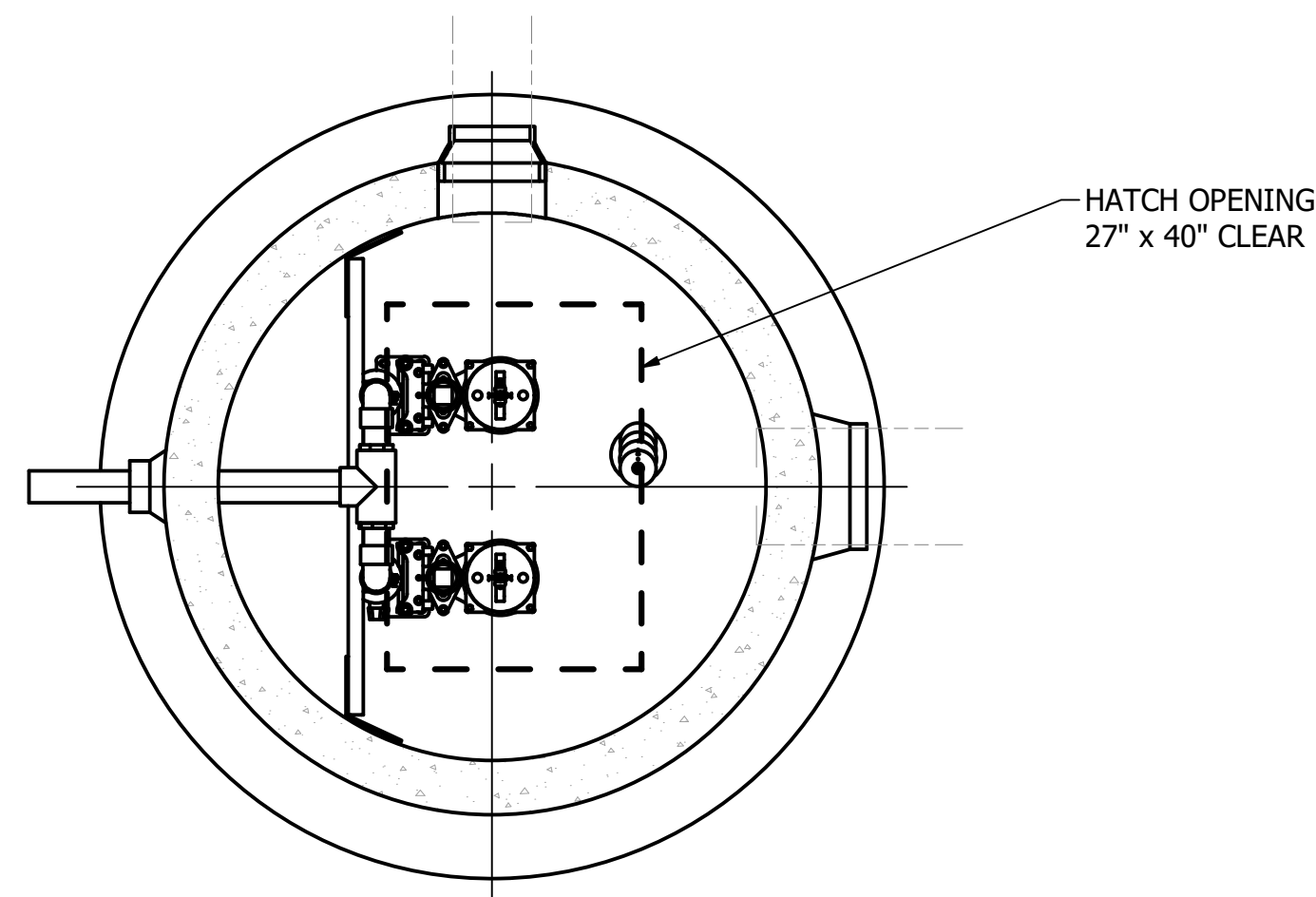


AS BUILT



ISO VIEW
SCALE 1 / 24



SECTION B-B
SCALE 1 / 20

**NOTE: TOP SLAB AND HATCH ARE
H-20 OCCASIONAL TRAFFIC RATED**

PUMP PACKAGE

CONFIGURATION: DUPLEX
MODEL: GOULDS 3887 BF
HP: 1/2 HP
DUTY POINT: 99.5 GPM AT 13.6 TDH

FEATURES

HATCH: H-20 OCCASIONAL, ALUMINUM
DISCHARGE PIPING: 2-1/2" PVC SCH80, 3" OUTLET
PRIMARY LEVEL SENSING: (4) FLOAT LEVEL SENSORS
BACKUP LEVEL SENSING: N/A
STAINLESS STEEL GUIDE RAILS
QUICK CONNECT DISCHARGE ELBOWS

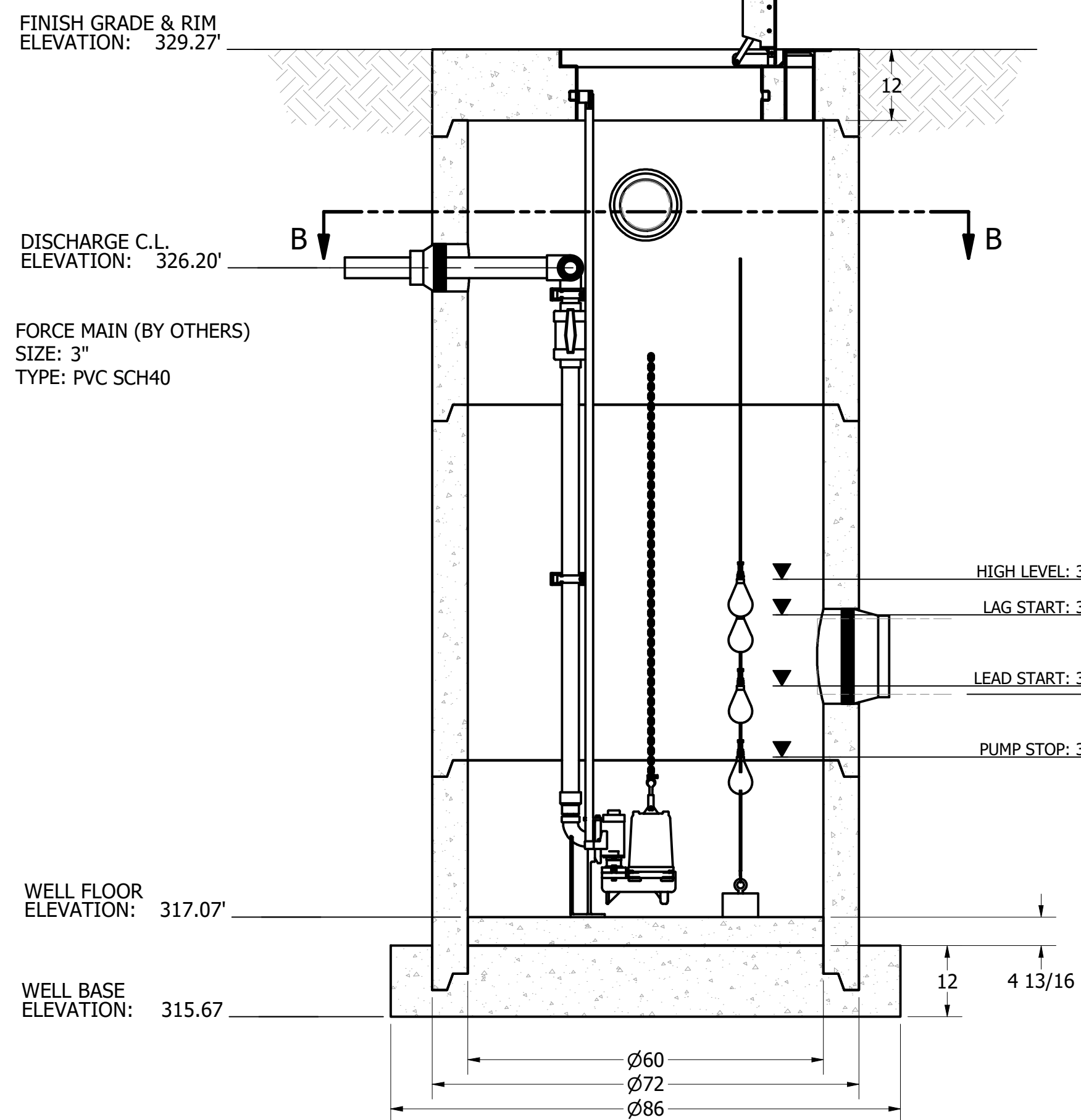
PRIMARY SENSOR ELEVATION TABLE		
DESCRIPTION	ELEVATION	Δ
INFLUENT INVERT	320.24'	
HIGH LEVEL ALARM	321.82'	0.50'
LAG PUMP START	321.32'	1.00'
LEAD PUMP START	320.32'	1.00'
PUMP STOP	319.32'	2.25'
WELL FLOOR	317.07'	

NOTE:
CONDUIT TO CONTROL PANEL (BY OTHERS)
MINIMUM:
(2) FOR POWER
(1) FOR LEVEL SENSING

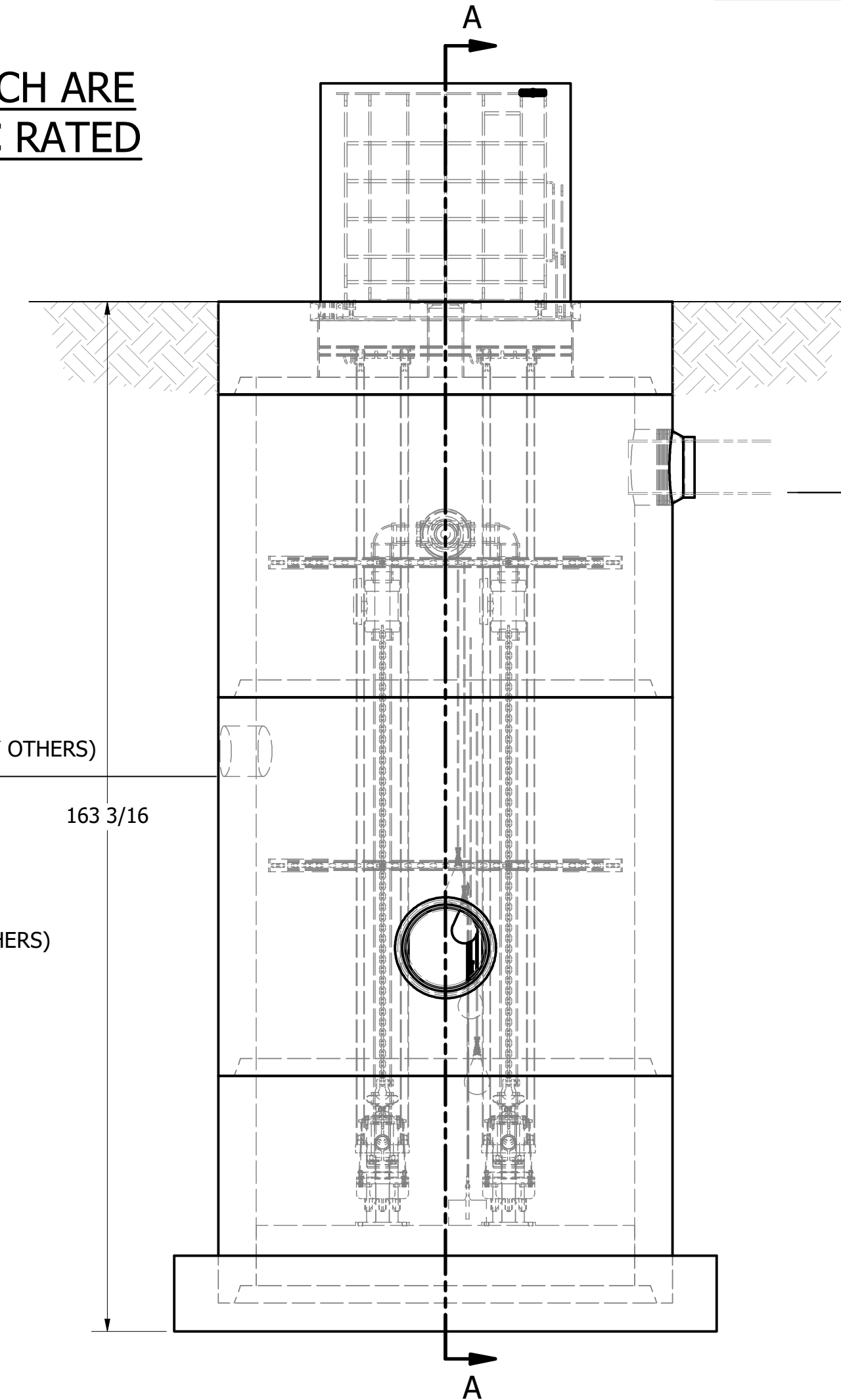
ALL MATERIALS SHOWN ON THIS SHEET WILL BE SUPPLIED BY ROMTEC UTILITIES AND DELIVERED TO THE SITE AFTER THE HOLE HAS BEEN EXCAVATED AND SHORED. THE CONTRACTOR SHALL SUPPLY A CRANE OF SUFFICIENT SIZE TO LOWER ALL THE CONCRETE PIECES INTO THE HOLE SAFELY. THE CONTRACTOR SHALL INSTALL THE WET WELL (AND VALVE VAULT AND METERING VAULT IF APPLICABLE). ROMTEC UTILITIES WILL PROVIDE A REPRESENTATIVE FOR TECHNICAL ASSISTANCE ON THE DAY OF INSTALLATION TO ANSWER ANY QUESTIONS THAT MAY ARISE. THE CONTRACTOR IS RESPONSIBLE FOR ALL PLUMBING AND ELECTRICAL CONNECTIONS AND INSTALLATION. ITEMS NOTED AS "BY OTHERS" WILL BE PROVIDED AND INSTALLED BY THE CONTRACTOR. ROMTEC UTILITIES WILL NOT INSTALL ANY OF THE COMPONENTS SHOWN ON THIS PAGE.



© 2022 ROMTEC INC. ALL RIGHTS RESERVED. THESE PLANS AND DRAWINGS MAY NOT BE REPRODUCED, ADAPTED, OR FURTHER DISTRIBUTED, AND NO COMPONENTS MAY BE CONSTRUCTED FROM THESE PLANS, WITHOUT WRITTEN PERMISSION OF ROMTEC, INC.



SECTION A-A
SCALE 1 / 20



OVERFLOW STORM (BY OTHERS)
8" PVC C900
ELEVATION: 326.75'

NOTE: 326.75' IS THE MAX ELEVATION ALLOWED DUE TO PIPE PENETRATION INTERFERENCE WITH CONCRETE JOINT.

NOTE: ALL DIMENSIONS AND ELEVATIONS SHOWN ARE NOMINAL DIMENSIONS. IT IS THE RESPONSIBILITY OF THE ON-SITE CONTRACTOR OR ROMTEC UTILITIES CUSTOMER (NOT ROMTEC UTILITIES) TO VERIFY THE ACCURACY OF ANY CRITICAL DIMENSIONS OR ELEVATIONS PRIOR TO SETTING OR INSTALLING ANY EQUIPMENT.

REV	DATE	DESCRIPTION	BY
2	6/5/23	AS BUILT	RD
1	6/8/22	COMMENTS	RD
		REVISION HISTORY	BY

VERIFY SCALE
0 1" 2"
DATE: 4-13-22

ROMTEC UTILITIES
18240 NORTH BANK ROAD
ROSEBURG, OREGON 97470
PHONE: (541) 496-9678
WWW.ROMTECUTILITIES.COM

PARAMOUNT APARTMENTS
SHORELINE, WA
STORMWATER PUMP STATION
SYSTEM DRAWING

AS BUILT