

**PROJECT INFO**

Job Name:	VERNON DATA CENTER
Company:	KIMLEY HORN
Contact:	LUPITA ASTORGA
Job Type:	New Station
Water Type/Source:	Stormwater
Import/Domestic:	Import Acceptable


**PACKAGE/STARTUP**

Offering:	Complete System
Mechanical:	All by Romtec Utilities
Pumps:	By Romtec Utilities
Control Panel:	By Romtec Utilities
Generator:	
Advisor/Startup:	Mechanical & Electrical
Turnkey:	No

**DESIGN CRITERIA - SWC10D-VM-T0100-1500x10-8D-43-0**
**FLOW RATE**

Peak Inflow:	3936	GPM
Pumping Rate:	1312	GPM (of single pump)
Static Head:	13.0	Feet
TDH:	14.7	Feet
TDH Calcs:	RU Calcs	

**ACTIVE VOLUME**

Max Pump Starts:	12.00	Starts/Hr
Cycle Time:	5.00	Minutes
Active Volume:	1640.00	Gallons
Active Volume:	219.25	Cu Feet
Well Shape:	Round	
Well Diameter:	10	Feet
Well Dimensions:	N/A	N/A
Cross-Section Area:	78.54	Sq Feet
Min. Depth Required:	2.79	Feet
Active Depth:	2.80	Feet

**STORAGE VOLUME (if required)**

Time:		Minutes
Flow Rate:		GPM
Volume:	0.00	Gallons
Volume:	0.00	Cu. Feet
Min. Depth Required:	0.00	Feet
Storage Depth:		Feet

**ON-SITE POWER**

Power:	480V / 3-Phase
--------	----------------

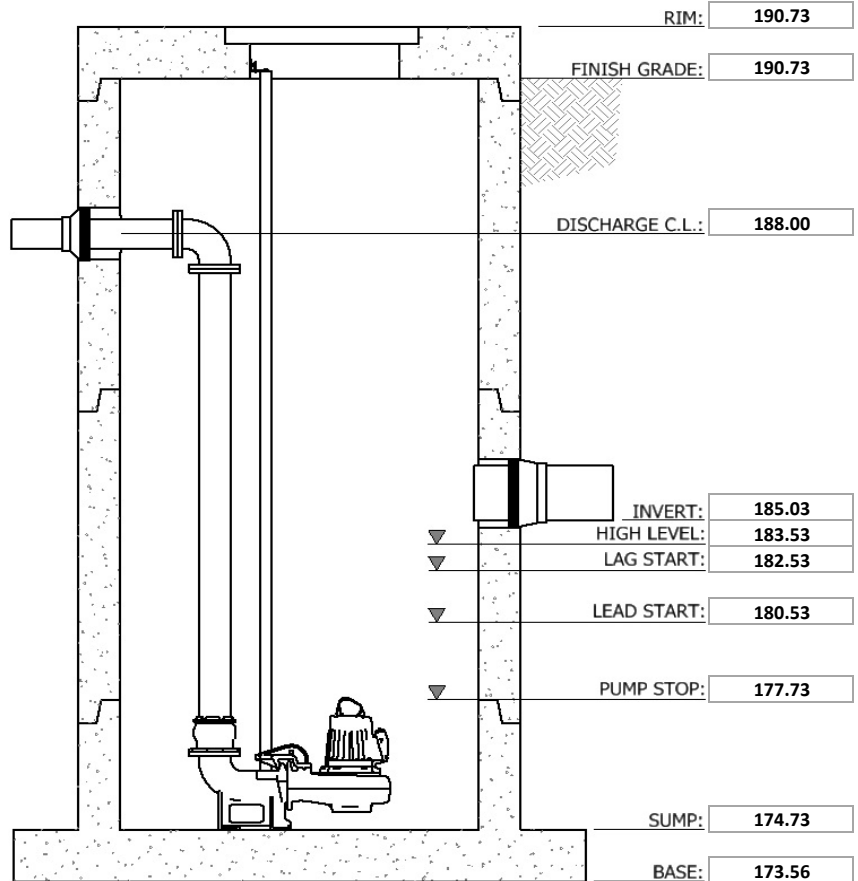
**FORCE MAIN**

FM Info:	New	Triple FM
Length:	10	Feet
FM Discharge:	190.75	Feet
FM High Point:	190.75	Feet

	(1)	(2)	(3)
Nominal ID:	8"		
Type/Rating:	DI CL52		

**INFLUENT PIPING**

	(1)	(2)	(3)
Influent Invert:	185.03		
Influent Size:	24"		
Type:	HDPE (Corr.)		



Note: Image is a preliminary representation of the pumping system. Elevations shown are the primary factors used for sizing the wet well. Backup levels not shown. Additional (or fewer) level settings may be required.

**General Specification**

- The package pump station supplier of the sewer lift station shall be Romtec Utilities. The package pump station supplier shall design and draw the complete lift station including the wet well structure and associated piping and valves along with the control panel and the associated schematics.
- The package pump station supplier shall be solely responsible for proper prefabrication, integration, supply, performance, and warranty of all package pump station components delineated in this specification and on the drawings, which shall be used as a guide of the minimum product specifications that shall be met.
- The package pump station supplier work shall include designing and supplying the piping, mechanical, and appurtenances within and adjacent to the wet well as a complete, predesigned, packaged pump station as described herein.
- The drawings shall be of sufficient detail for the Engineer to review for conformity to the contract. All drawings shall include elevations on the same datum point as in the contract plans.
- Romtec Utilities will manufacture and deliver the pump station as described below to the job site for the contractor. A representative of Romtec Utilities will be present the day of the underground installation.
- The package pump station supplier is responsible for overseeing all start-up, testing and training procedures.