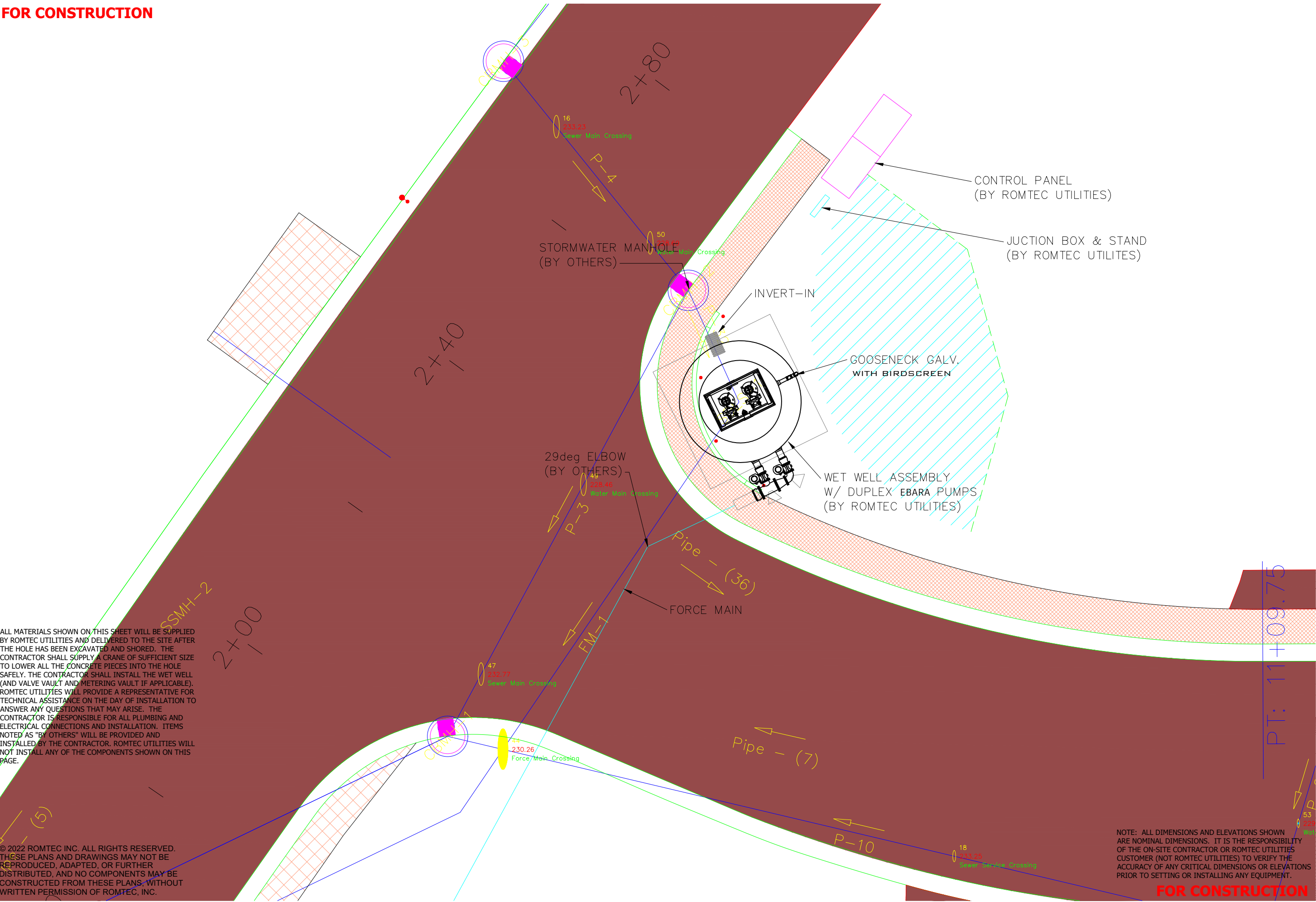


FOR CONSTRUCTION

ALL MATERIALS SHOWN ON THIS SHEET WILL BE SUPPLIED BY ROMTEC UTILITIES AND DELIVERED TO THE SITE AFTER THE HOLE HAS BEEN EXCAVATED AND SHORED. THE CONTRACTOR SHALL SUPPLY A CRANE OF SUFFICIENT SIZE TO LOWER ALL THE CONCRETE PIECES INTO THE HOLE SAFELY. THE CONTRACTOR SHALL INSTALL THE WET WELL (AND VALVE VAULT AND METERING VAULT IF APPLICABLE). ROMTEC UTILITIES WILL PROVIDE A REPRESENTATIVE FOR TECHNICAL ASSISTANCE ON THE DAY OF INSTALLATION TO ANSWER ANY QUESTIONS THAT MAY ARISE. THE CONTRACTOR IS RESPONSIBLE FOR ALL PLUMBING AND ELECTRICAL CONNECTIONS AND INSTALLATION. ITEMS NOTED AS "BY OTHERS" WILL BE PROVIDED AND INSTALLED BY THE CONTRACTOR. ROMTEC UTILITIES WILL NOT INSTALL ANY OF THE COMPONENTS SHOWN ON THIS PAGE.

© 2022 ROMTEC INC. ALL RIGHTS RESERVED. THESE PLANS AND DRAWINGS MAY NOT BE REPRODUCED, ADAPTED, OR FURTHER DISTRIBUTED, AND NO COMPONENTS MAY BE CONSTRUCTED FROM THESE PLANS WITHOUT WRITTEN PERMISSION OF ROMTEC, INC.



NOTE: ALL DIMENSIONS AND ELEVATIONS SHOWN ARE NOMINAL DIMENSIONS. IT IS THE RESPONSIBILITY OF THE ON-SITE CONTRACTOR OR ROMTEC UTILITIES CUSTOMER (NOT ROMTEC UTILITIES) TO VERIFY THE ACCURACY OF ANY CRITICAL DIMENSIONS OR ELEVATIONS PRIOR TO SETTING OR INSTALLING ANY EQUIPMENT.

FOR CONSTRUCTION

EAGLE GLENN
EAGLE RIVER, AK
STORMWATER PUMP STATION
LAYOUT DRAWING

SHEET
C-01

VERIFY SCALE
DRAWINGS SHOWN
IN THIS SCALE
SHALL BE USED
FOR CONSTRUCTION
ONLY. ALL OTHER
SCALES ACCORDINGLY

0 1"

DATE: 6-29-22

DSN: KB
DRN: KB
CKD:

18240 NORTH BANK ROAD
ROSEBURG, OREGON 97470
PHONE: (541) 496-9678
WWW.ROMTECUTILITIES.COM

LAUNCH		ORIENTATION & VENT PIPING		COMMENTS	
3	9/8/22	2	8/26/22	1	8/19/22
REV	DATE	REV	DATE	REV	DATE
DESCRIPTION		DESCRIPTION		DESCRIPTION	
REVISION HISTORY		REVISION HISTORY		REVISION HISTORY	
BY		BY		BY	