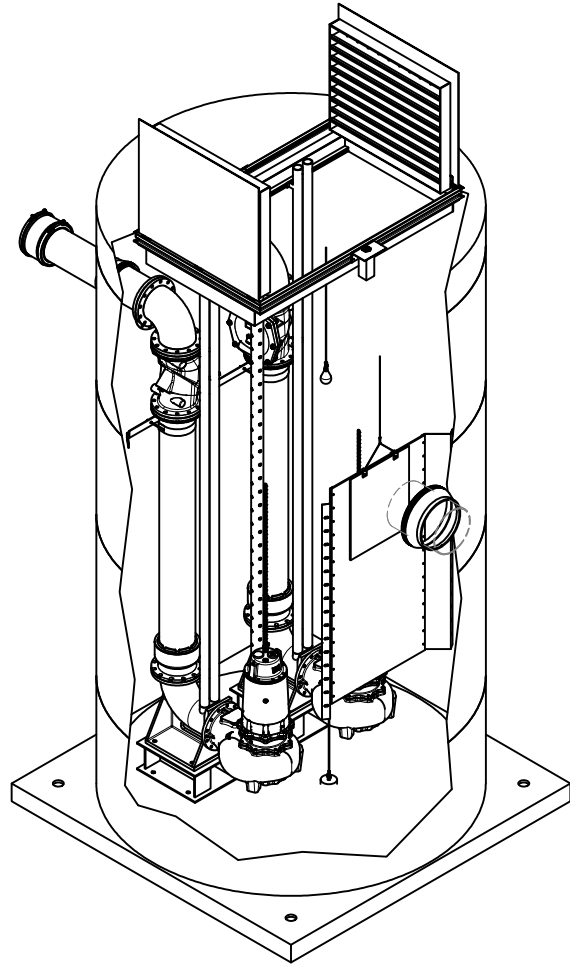
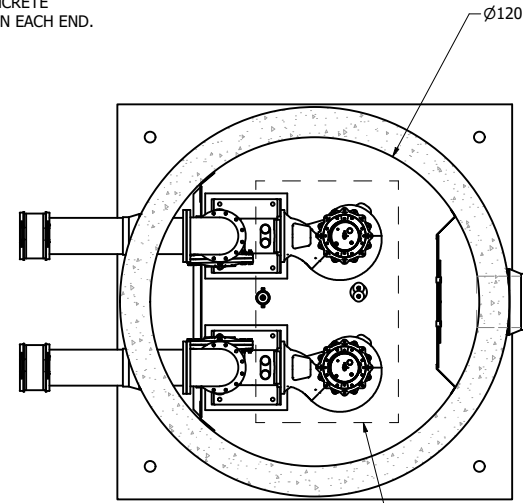


**FOR PRODUCTION**



12" THICK CAST-IN-PLACE CONCRETE THRUST RESTRAINT COLLAR ON EACH END. (BY OTHERS)

FORCE MAIN (BY OTHERS)  
SIZE: 12"  
TYPE: PVC C900 DR25



SECTION B-B  
SCALE 1 / 35

CLEAR HATCH OPENING:  
52" X 88-1/2"

PRIMARY SENSOR ELEVATION TABLE		
DESCRIPTION	ELEVATION	Δ
INFLUENT INVERT	2819.09'	
HIGH LEVEL ALARM	2822.50'	0.50'
LAG PUMP START	2822.00'	3.00'
LEAD PUMP START	2819.00'	6.50'
PUMP STOP	2812.50'	5.00'
WELL FLOOR	2807.50'	

MISC. ELEVATION TABLE	
DESCRIPTION	ELEVATION
BACKUP HL ALARM	2823.00'
BACKUP LL ALARM	2811.50'

**PUMP PACKAGE**

CONFIGURATION: DUPLEX

MODEL: K12VK

HP: 20

DUTY POINT: 5054GPM @ 16.9TDH

**FEATURES**

HATCH: H-20 OCCASIONAL

DISCHARGE PIPING: 12" DUCTILE IRON

PRIMARY LEVEL SENSING: PRESSURE TRANSDUCER

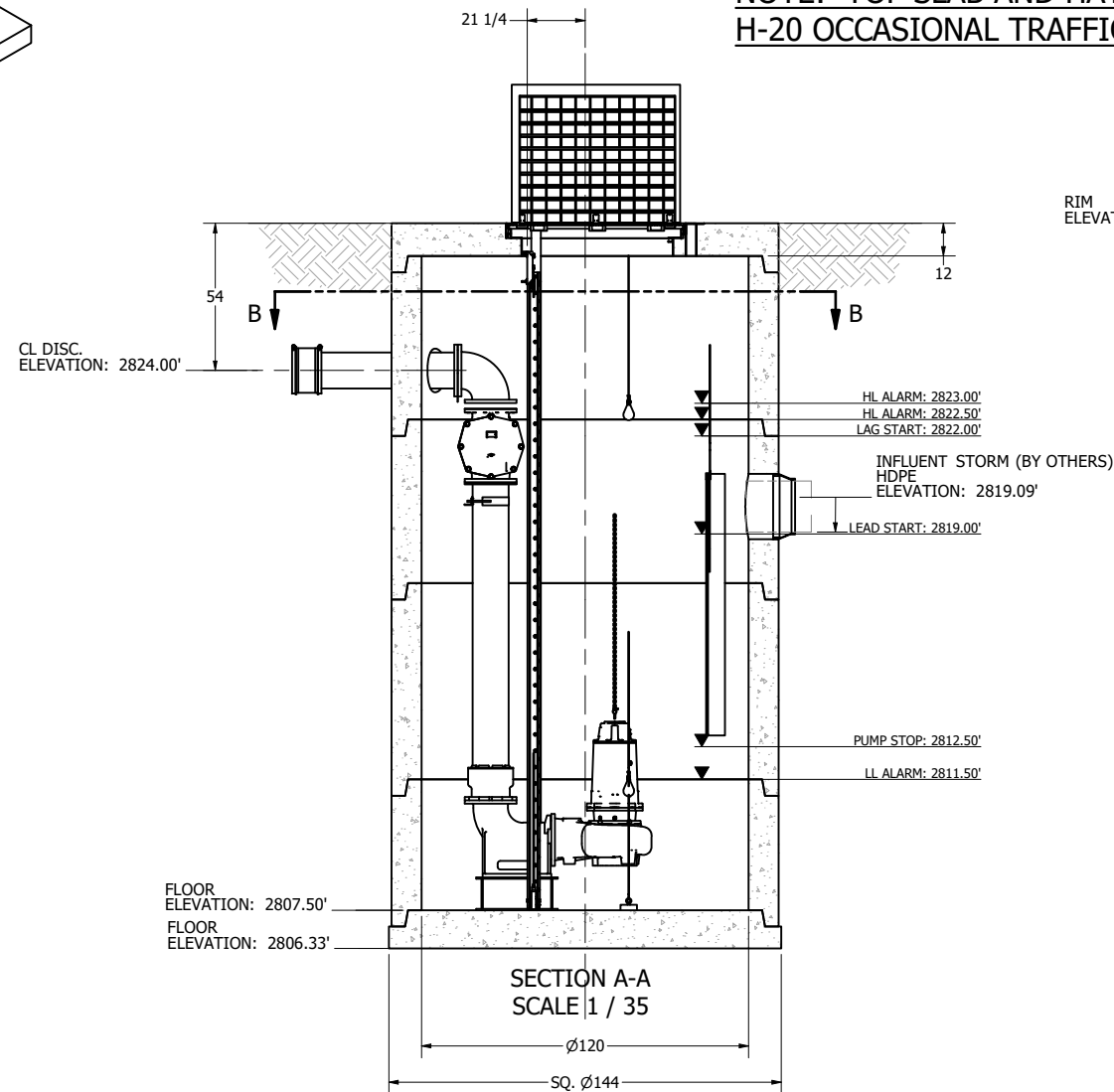
BACKUP LEVEL SENSING: (2) FLOATS

STAINLESS STEEL GUIDE RAILS

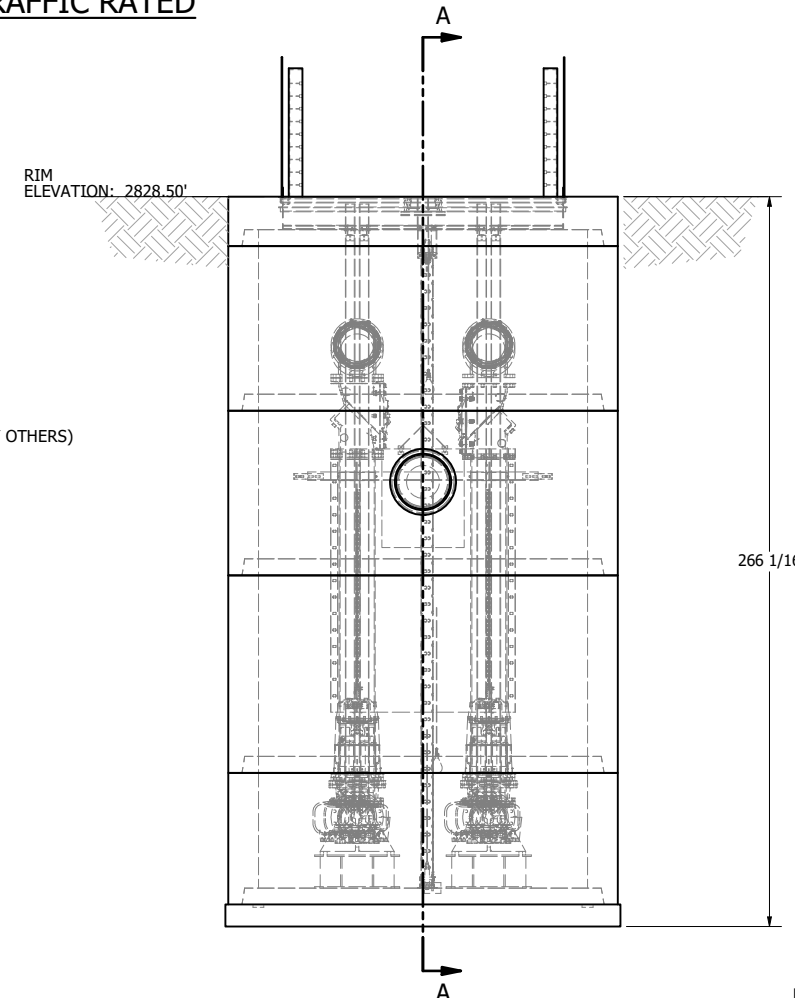
QUICK CONNECT DISCHARGE ELBOWS

VFD

**NOTE: TOP SLAB AND HATCH ARE H-20 OCCASIONAL TRAFFIC RATED**



SECTION A-A  
SCALE 1 / 35



NOTE:  
CONDUIT TO CONTROL PANEL (BY OTHERS)  
MINIMUM:  
(2) FOR POWER  
(1) FOR LEVEL SENSING

ALL MATERIALS SHOWN ON THIS SHEET WILL BE SUPPLIED BY ROMTEC UTILITIES AND DELIVERED TO THE SITE AFTER THE HOLE HAS BEEN EXCAVATED AND SHORED. THE CONTRACTOR SHALL SUPPLY A CRANE OF SUFFICIENT SIZE TO LOWER ALL THE CONCRETE PIECES INTO THE HOLE SAFELY. THE CONTRACTOR SHALL INSTALL THE WET WELL (AND VALVE VAULT AND METERING VAULT IF APPLICABLE). ROMTEC UTILITIES WILL PROVIDE A REPRESENTATIVE FOR TECHNICAL ASSISTANCE ON THE DAY OF INSTALLATION TO ANSWER ANY QUESTIONS THAT MAY ARISE. THE CONTRACTOR IS RESPONSIBLE FOR ALL PLUMBING AND ELECTRICAL CONNECTIONS AND INSTALLATION. ITEMS NOTED AS "BY OTHERS" WILL BE PROVIDED AND INSTALLED BY THE CONTRACTOR. ROMTEC UTILITIES WILL NOT INSTALL ANY OF THE COMPONENTS SHOWN ON THIS PAGE.



© 2022 ROMTEC INC. ALL RIGHTS RESERVED. THESE PLANS AND DRAWINGS MAY NOT BE REPRODUCED, ADAPTED, OR FURTHER DISTRIBUTED, AND NO COMPONENTS MAY BE CONSTRUCTED FROM THESE PLANS, WITHOUT WRITTEN PERMISSION OF ROMTEC, INC.

NOTE: ALL DIMENSIONS AND ELEVATIONS SHOWN ARE NOMINAL DIMENSIONS. IT IS THE RESPONSIBILITY OF THE ON-SITE CONTRACTOR OR ROMTEC UTILITIES CUSTOMER (NOT ROMTEC UTILITIES) TO VERIFY THE ACCURACY OF ANY CRITICAL DIMENSIONS OR ELEVATIONS PRIOR TO SETTING OR INSTALLING ANY EQUIPMENT.

**FOR PRODUCTION**

REV	DATE	DESCRIPTION	BY	RD
1	11/2/22	LAUNCH		RD
0	9/23/22	INITIAL DESIGN		RD

VERIFY SCALE  
AS SHOWN ON THIS DRAWING  
DATE: 9/23/22

**ROMTEC UTILITIES**  
18240 NORTH BANK ROAD  
ROSEBURG, OREGON 97470  
PHONE: (541) 496-9678  
WWW.ROMTECUTILITIES.COM

MCCOYS BUILDING SUPPLY TX  
STORMWATER LIFT STATION  
SYSTEM DRAWING

